

DESIGNED AND DIMENSIONED IN MILLIMETERS[INCHES]
ALL DIMENSIONS REFERENCE EXCEPT AS SHOWN

APM6-XXX-XX.X-XXX-XX-X-X-XR

DO NOT SCALE FROM THIS PRINT

No. OF POSITIONS
* -010, -020, *-030, -040, *-050, -060, Δ -064 *-070, *-080, *-090, -100 (PER ROW)

TAPE & REEL (SEE NOTES 2 & 3)
-TR: TAPE & REEL
-FR: FULL REEL QTY TAPE & REEL

LEAD STYLE
-01.5: 1.5MM
Δ -01.9: 1.9MM
-06.5: 6.5MM

OPTION
BLANK: NO ALIGNMENT PIN
-A: ALIGNMENT PIN (SEE SHT 3, FIG 3)

PLATING SPECIFICATION
-L: 10μ" SELECTIVE GOLD IN CONTACT AREA, MATTE TIN ON TAIL
-S: 30μ" SELECTIVE GOLD IN CONTACT AREA, MATTE TIN ON TAIL
*STL: 30μ" SELECTIVE GOLD IN CONTACT AREA, TIN/LEAD ON SOLDER TAIL.

SOLDER BALL COMPOSITION

**0: NO SOLDER BALLS
*1: 63.0% TIN/37.0% LEAD
-2: 95.5% TIN/3.8% SILVER/0.7% COPPER

ROW
-04: 4 ROW
*-06: 6 ROW
○ * -08: 8 ROW
*-10: 10 ROW
□ -16: 16 ROW

(* = NOT TOOLED)
(** = NOT RELEASED)
(□ = ONLY AVAILABLE IN -50 POS)
(⊗ = ONLY AVAILABLE IN -100 POS)
(Δ = ONLY MATES WITH -RA OPTION)
(○ = ONLY AVAILABLE WITH -01.5 LEAD STYLE)

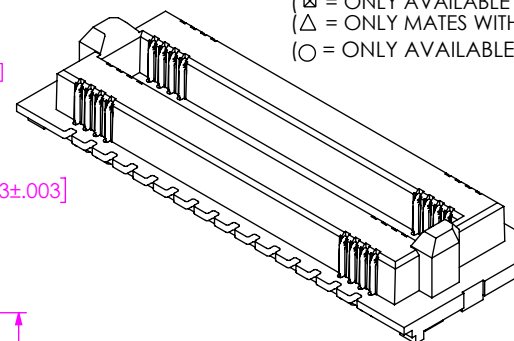
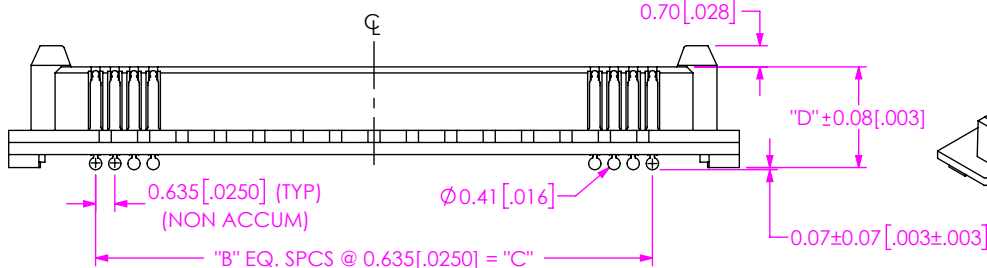
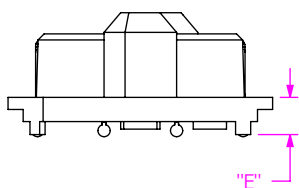
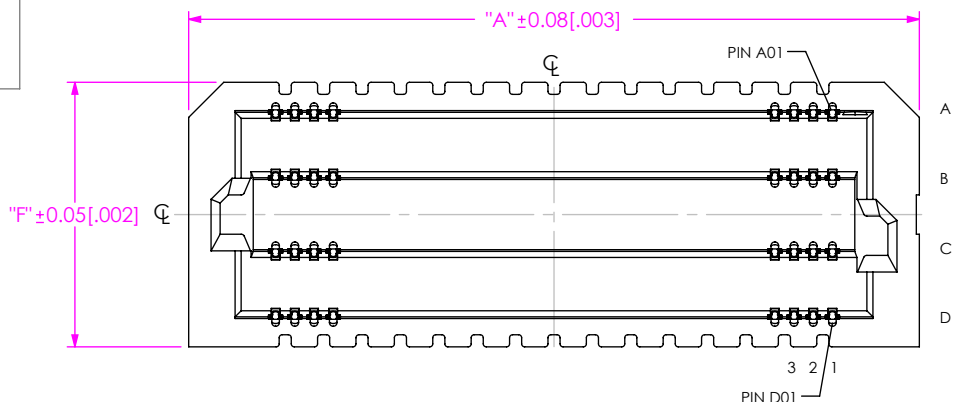


TABLE 3

LEAD STYLE	"D"	"E"
-01.5	3.33 [0.131]	1.23 [0.048]
-01.9	3.71 [0.146]	1.23 [0.048]
-06.5	8.33 [0.328]	6.23 [0.245]

TABLE 4

No. OF ROWS	"F"	"G"
-04	8.75 [0.344]	6.80 [0.268]
-06	13.35 [0.526]	11.40 [0.449]
-08	17.95 [0.707]	16.00 [0.630]
-10	22.55 [0.888]	20.60 [0.811]
-16	36.35 [1.431]	34.40 [1.354]

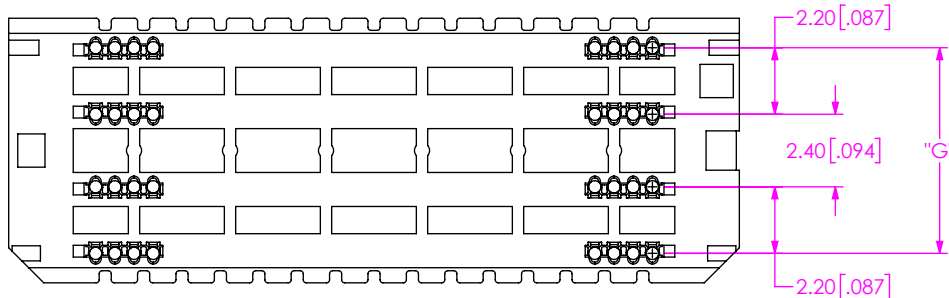


TABLE 1
STACK HEIGHT

APF6 LEAD STYLE	APM6 LEAD STYLE	
	-01.5	-06.5
-03.5	5.00 [0.197]	10.00 [0.394]

FIG 1
APM6-030-01.5-XXX-04-X-XR SHOWN
(SOME CENTER FEATURES REMOVED FOR CLARITY)

TABLE 2

No. OF POS. PER ROW	"A"	"B"	"C"
-010	11.47 [0.451]	9	5.72 [0.225]
-020	17.82 [0.701]	19	12.07 [0.475]
-030	24.17 [0.951]	29	18.42 [0.725]
-040	30.52 [1.201]	39	24.77 [0.975]
-050	36.87 [1.451]	49	31.12 [1.225]
-060	43.22 [1.701]	59	37.47 [1.475]
-064	45.21 [1.780]	63	40.01 [1.575]
-070	49.57 [1.951]	69	43.82 [1.725]
-080	55.92 [2.201]	79	50.17 [1.975]
-090	62.27 [2.451]	89	56.52 [2.225]
-100	68.62 [2.701]	99	62.87 [2.475]

NOTES:

- NOTE DELETED.
- ORDERS WILL BE PACKAGED ACCORDING TO THE SAMTEC PACKAGING EFFICIENCY STANDARDS [SPES] FOUND ON WWW.SAMTEC.COM.
- ATTACH LABEL -4X2 TO EACH REEL.
- K-DOT PROVIDED AS STANDARD.
- MEASURE BOTH OUTSIDE ROWS ONLY.
- SEE SHT 3 FOR PROCESSING INFORMATION.

PROPRIETARY NOTE
THIS DOCUMENT CONTAINS CONFIDENTIAL AND PROPRIETARY INFORMATION AND ALL DESIGN, MANUFACTURING, REPRODUCTION, USE, PATENT RIGHTS AND SALES RIGHTS ARE EXPRESSLY RESERVED BY SAMTEC, INC. THIS DOCUMENT SHALL NOT BE DISCLOSED, IN WHOLE OR PART, TO ANY UNAUTHORIZED PERSON OR ENTITY NOR REPRODUCED, TRANSFERRED OR INCORPORATED IN ANY OTHER PROJECT IN ANY MANNER WITHOUT THE EXPRESS WRITTEN CONSENT OF SAMTEC, INC.

DO NOT SCALE DRAWING
SHEET SCALE: 4:1
MATERIAL: INSULATOR: LCP, COLOR: BLACK
TERMINAL: COPPER ALLOY



520 PARK EAST BLVD, NEW ALBANY, IN 47150
PHONE: 812-944-6733 FAX: 812-948-5047
e-Mail: info@SAMTEC.com code 55322

DESCRIPTION:
APM6 0.635MM TERMINAL ARRAY ASSEMBLY
DWG. NO.
APM6-XXX-XX.X-XXX-XX-X-X-XR
BY: B BLESSING 4/24/2018 SHEET 1 OF 4

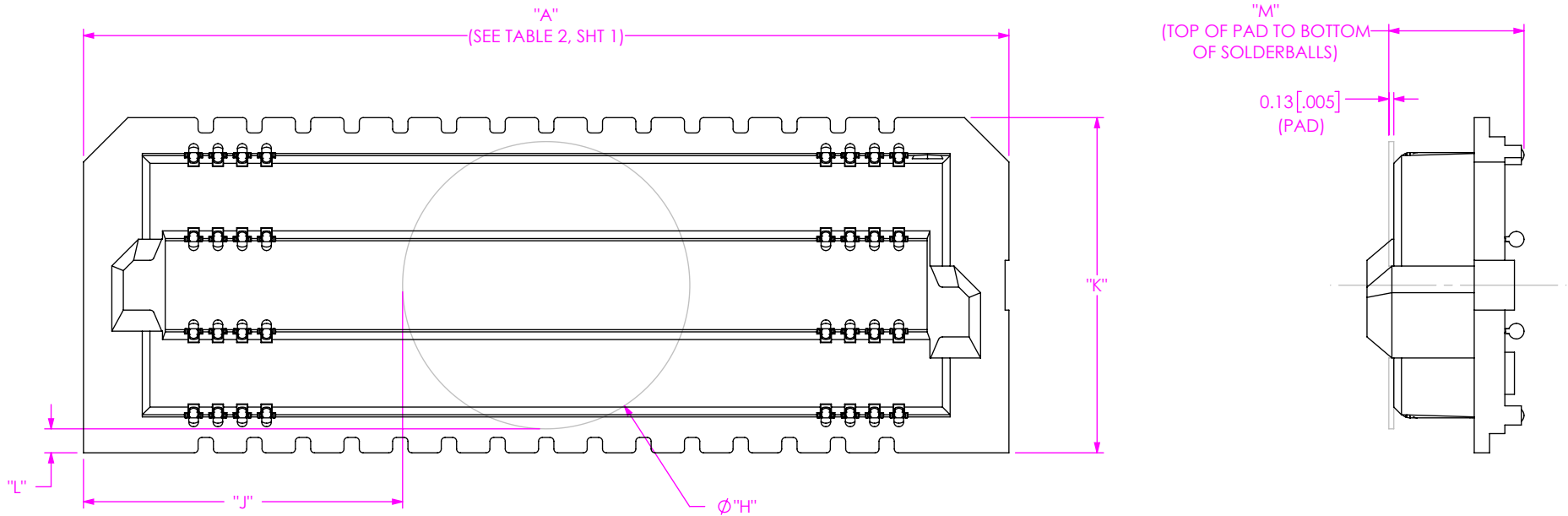


FIG 2
 POLYIMIDE PAD
 APM6-030-1.5-XXX-XX-X-XR SHOWN
 (SOME CENTER FEATURES REMOVED FOR CLARITY)

TABLE 5

-No. OF ROWS	ϕH "	"J"											"L"
		10 POS	20 POS	30 POS	40 POS	50 POS	60 POS	64 POS	70 POS	80 POS	90 POS	100 POS	
-04	7.50 [0.295]	1.98 [0.078]	5.16 [0.203]	8.33 [0.328]	11.51 [0.453]	14.68 [0.578]	17.86 [0.703]	19.13 [0.753]	21.03 [0.828]	24.21 [0.953]	27.38 [1.078]	30.56 [1.203]	0.63 [0.025]
-06	9.00 [0.354]	1.23 [0.049]	4.41 [0.174]	7.58 [0.299]	10.76 [0.424]	13.93 [0.549]	17.11 [0.674]	18.38 [0.724]	20.28 [0.799]	23.46 [0.924]	26.63 [1.049]	29.81 [1.174]	2.18 [0.086]
-08													4.48 [0.176]
-10													6.78 [0.267]
-16													13.68 [0.538]

TABLE 6

LEAD STYLE	"M"
-01.5	3.53 [0.139]
-01.9	3.91 [0.154]
-06.5	8.53 [0.336]

PROPRIETARY NOTE
 THIS DOCUMENT CONTAINS CONFIDENTIAL AND PROPRIETARY INFORMATION AND ALL DESIGN, MANUFACTURING, REPRODUCTION, USE, PATENT RIGHTS AND SALES RIGHTS ARE EXPRESSLY RESERVED BY SAMTEC, INC. THIS DOCUMENT SHALL NOT BE DISCLOSED, IN WHOLE OR PART, TO ANY UNAUTHORIZED PERSON OR ENTITY NOR REPRODUCED, TRANSFERRED OR INCORPORATED IN ANY OTHER PROJECT IN ANY MANNER WITHOUT THE EXPRESS WRITTEN CONSENT OF SAMTEC, INC.



520 PARK EAST BLVD, NEW ALBANY, IN 47150
 PHONE: 812-944-6733 FAX: 812-948-5047
 e-Mail info@SAMTEC.com code 55322

DO NOT SCALE DRAWING

SHEET SCALE: 6:1

DESCRIPTION:
 APM6 0.635MM TERMINAL ARRAY ASSEMBLY

DWG. NO.
 APM6-XXX-XX.X-XXX-XX-X-XR

BY: B BLESSING 4/24/2018 SHEET 2 OF 4

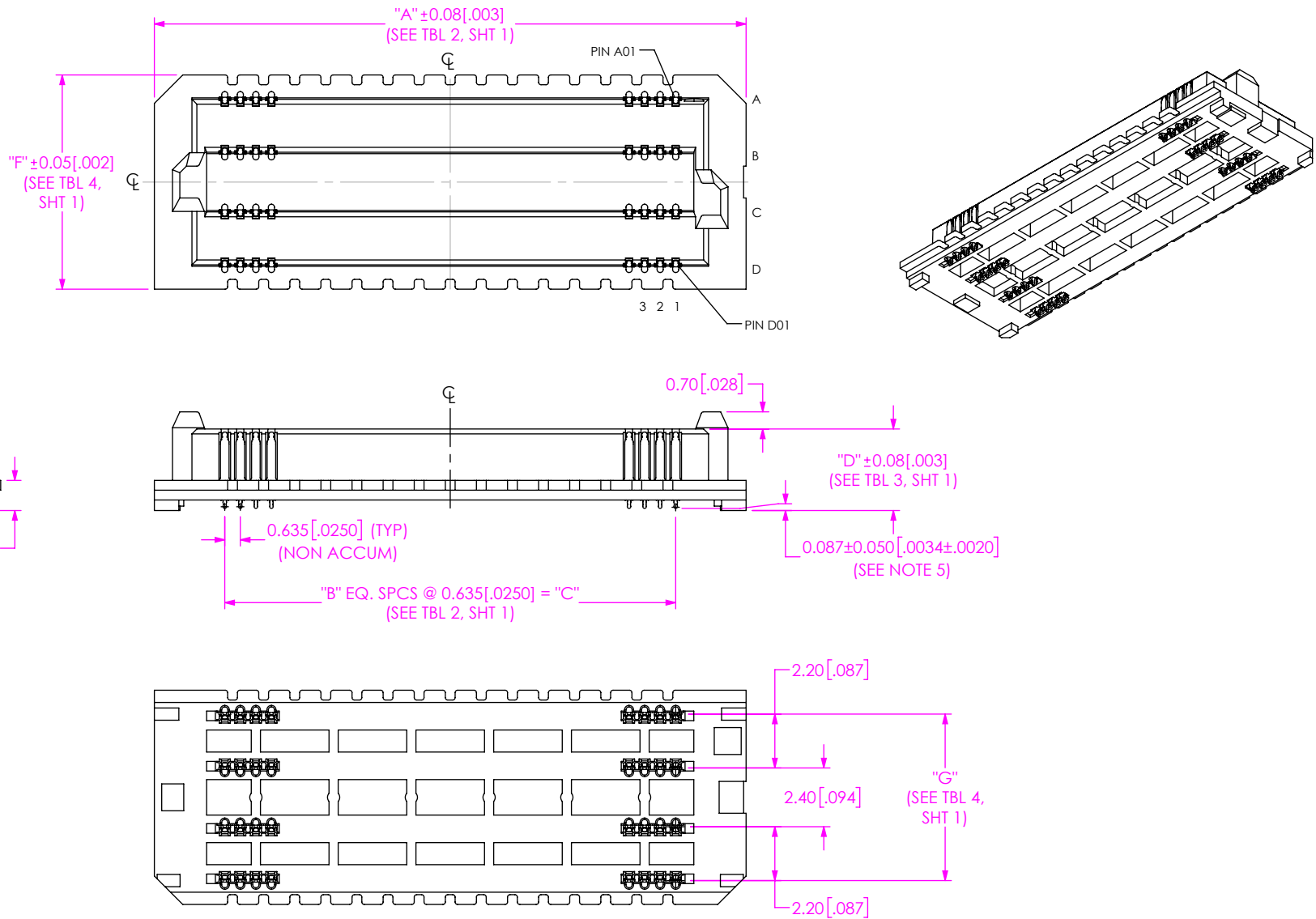


FIG 5
 APM6-030-01.5-XXX-04-0-XR SHOWN
 (NO SOLDER BALLS OPTION)
 (SOME CENTER FEATURES REMOVED FOR CLARITY)

<p>DO NOT SCALE DRAWING</p> <p>SHEET SCALE: 3:1</p>	<p>PROPRIETARY NOTE</p> <p>THIS DOCUMENT CONTAINS CONFIDENTIAL AND PROPRIETARY INFORMATION AND ALL DESIGN, MANUFACTURING, REPRODUCTION, USE, PATENT RIGHTS AND SALES RIGHTS ARE EXPRESSLY RESERVED BY SAMTEC, INC. THIS DOCUMENT SHALL NOT BE DISCLOSED, IN WHOLE OR PART, TO ANY UNAUTHORIZED PERSON OR ENTITY NOR REPRODUCED, TRANSFERRED OR INCORPORATED IN ANY OTHER PROJECT IN ANY MANNER WITHOUT THE EXPRESS WRITTEN CONSENT OF SAMTEC, INC.</p>	<p>samtec</p> <p>520 PARK EAST BLVD, NEW ALBANY, IN 47150 PHONE: 812-944-6733 FAX: 812-948-5047 e-Mail info@SAMTEC.com code 55322</p>
	<p>DESCRIPTION: APM6 0.635MM TERMINAL ARRAY ASSEMBLY</p>	
	<p>DWG. NO. APM6-XXX-XX.X-XXX-XX-X-X-XR</p>	
	<p>BY: B BLESSING 4/24/2018 SHEET 3 OF 4</p>	

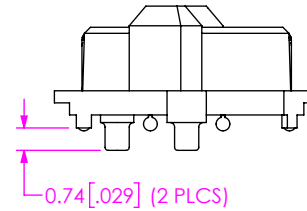
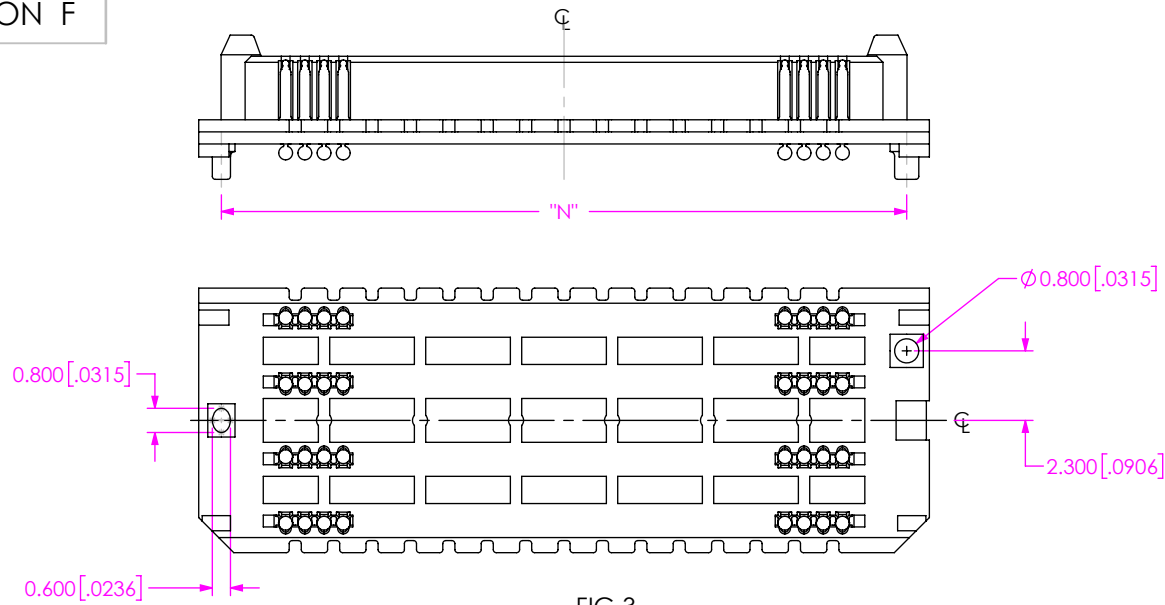


TABLE 7	
No OF POS PER ROW	"N"
-010	9.97 [0.392]
-020	16.32 [0.642]
-030	22.67 [0.892]
-040	29.02 [1.142]
-050	35.37 [1.392]
-060	41.72 [1.642]
-064	44.26 [1.742]
-070	48.07 [1.892]
-080	54.42 [2.142]
-090	60.77 [2.392]
-100	67.12 [2.642]

FIG 3
 -A: ALIGNMENT PIN
 APM6-030-01.5-XXX-04-X-A-XR SHOWN
 (SAME AS FIG 1, EXCEPT AS SHOWN)
 (SOME CENTER FEATURES REMOVED FOR CLARITY)

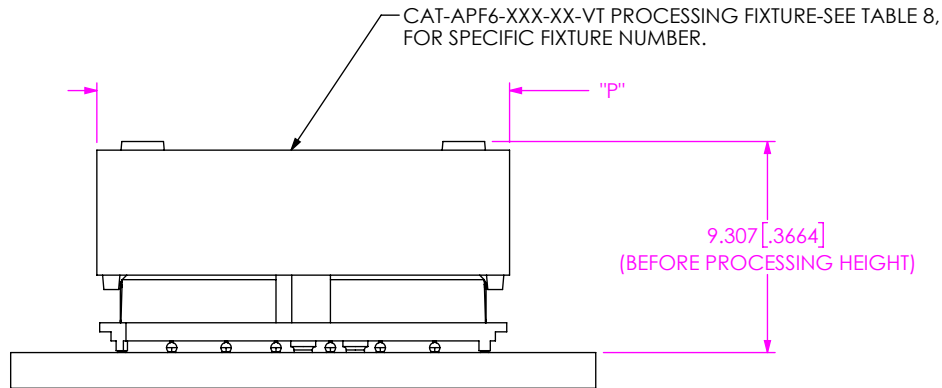


FIG 4
 PROCESSING FIXTURE
 (ONLY AVAILABLE IN -01.5 LEAD STYLE)

NOTE:
 FIG 4, DIMENSION 9.307 [.3664] INDICATES CONNECTOR/FIXTURE HEIGHT ON PCB.
 TO GUARANTEE ENOUGH REFLOW OVEN WORKING SPACE, DIMENSION 9.307 [.3664],
 PCB THICKNESS, AND THE HEIGHT OF THE COMPONENTS ON THE OPPOSITE
 SIDE OF THE BOARD NEED TO BE CONSIDERED.

TABLE 8			
APX6 FIXTURE TOOLS			
PART NUMBERS	POSITIONS	ROW	"P"
CAT-APF6-100-04-VT	100	-04	8.99 [0.354]
CAT-APF6-100-08-VT	100	-08	18.21 [0.717]

PROPRIETARY NOTE
 THIS DOCUMENT CONTAINS CONFIDENTIAL AND PROPRIETARY INFORMATION AND ALL DESIGN, MANUFACTURING, REPRODUCTION, USE, PATENT RIGHTS AND SALES RIGHTS ARE EXPRESSLY RESERVED BY SAMTEC, INC. THIS DOCUMENT SHALL NOT BE DISCLOSED, IN WHOLE OR PART, TO ANY UNAUTHORIZED PERSON OR ENTITY NOR REPRODUCED, TRANSFERRED OR INCORPORATED IN ANY OTHER PROJECT IN ANY MANNER WITHOUT THE EXPRESS WRITTEN CONSENT OF SAMTEC, INC.



520 PARK EAST BLVD, NEW ALBANY, IN 47150
 PHONE: 812-944-6733 FAX: 812-948-5047
 e-Mail info@SAMTEC.com code 55322

DO NOT SCALE DRAWING

SHEET SCALE: 4:1

DESCRIPTION:
 APM6 0.635MM TERMINAL ARRAY ASSEMBLY

DWG. NO.
 APM6-XXX-XX.X-XXX-XX-X-X-XR

BY: B BLESSING 4/24/2018 SHEET 4 OF 4