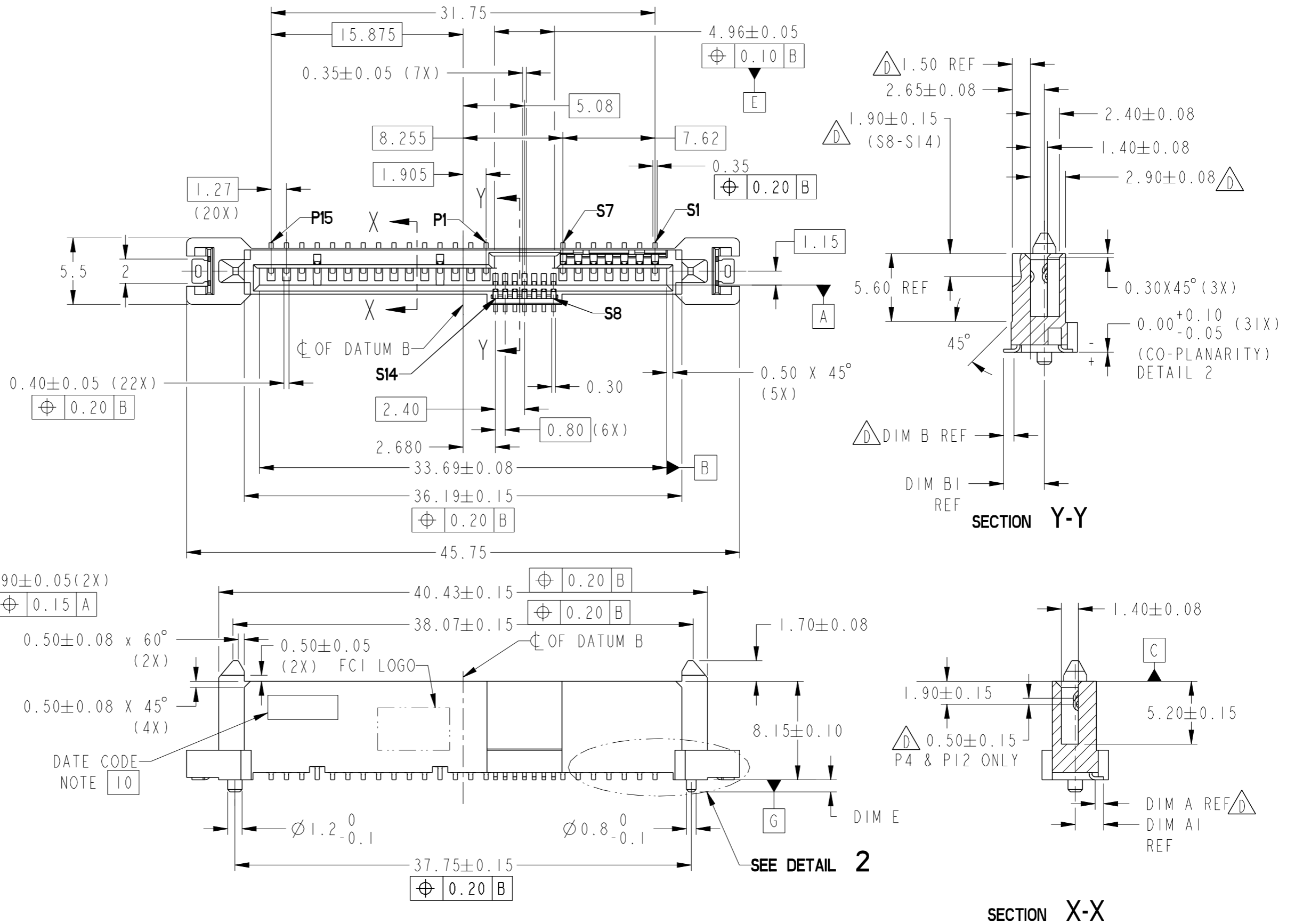


PRODUCT NUMBER  
SEE TABLE

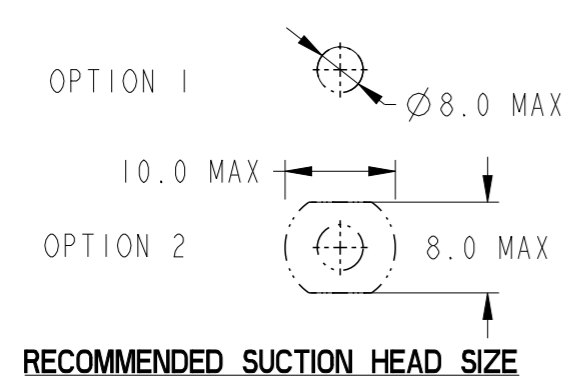
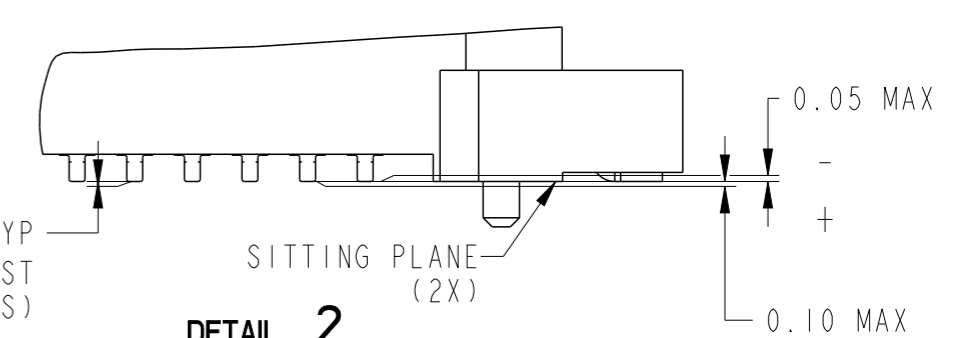
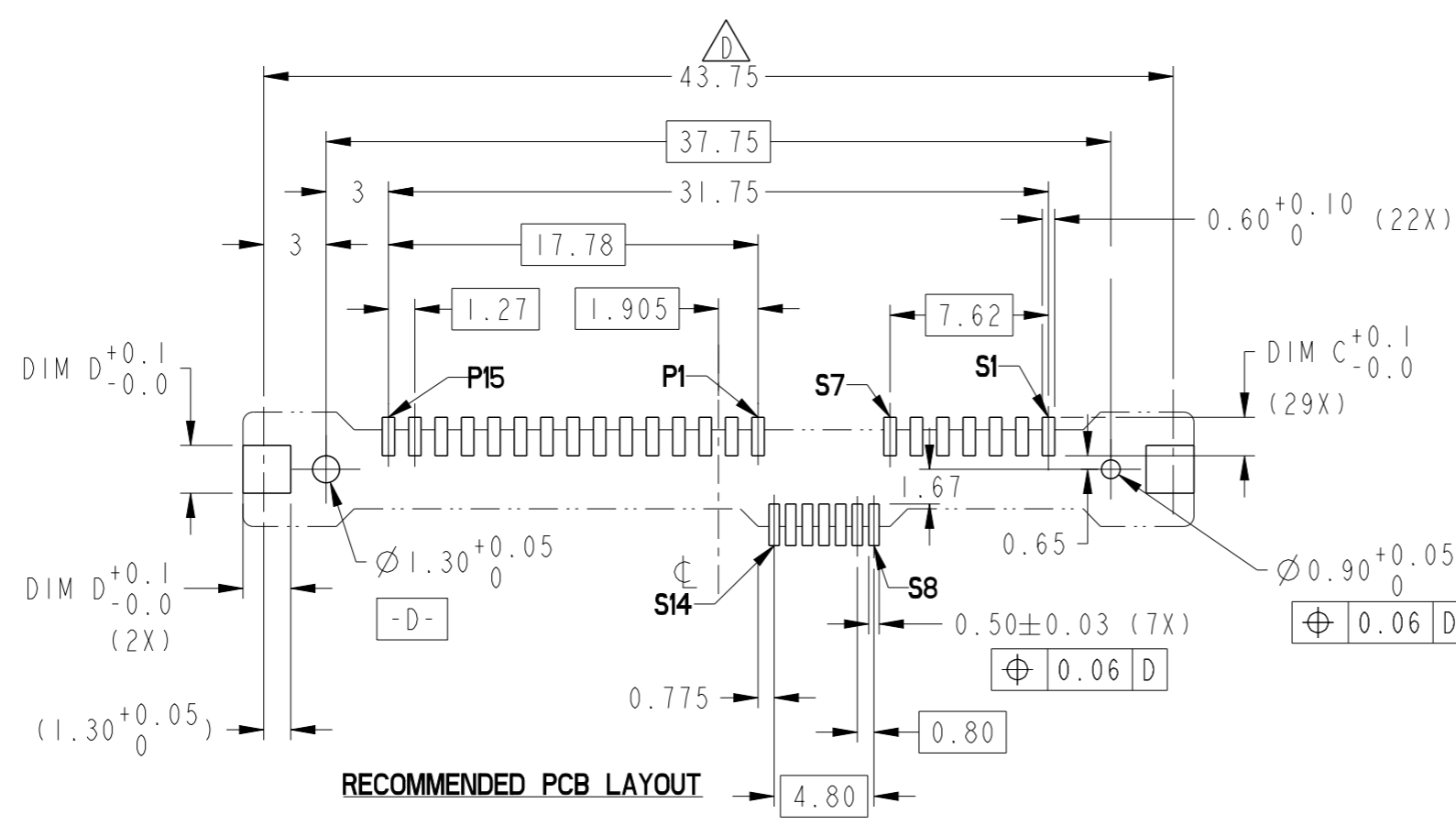


Amphenol  
FCi

© 2016 AFCI

spec ref	-	dr	Vajith P-N	2014/08/08	projection	mm	size	A3	scale	3:1
tolerance std	ISO 406 ISO 1101	eng	Wai-Bin Cho	2019/02/25			ecn no	ELX-M-32558-1	rel level	Released
TOLERANCES UNLESS OTHERWISE SPECIFIED		chr	-	2019/03/13						
surface	linear	0.X	±		SAS RECEPTACLE		dwg no	10129368	rev	D
	angular	0.XX	±0.20		VERTICAL SMT TYPE ASSY					
		0.XXX	±		cat. no.	-	Product - Customer Drw	sheet 1 of 3		
		0°	±2°							

PRODUCT NUMBER	DIM A REF	DIM A1 REF	DIM B REF	DIM B1 REF	DIM C	DIM D	METAL CLIP	PLATING	PICK-UP CAP	PACKAGING	REMARKS
10129368-001LF	0.71	2.35	0.86	3.37	1.85	2.3	2 PCS	NOTE 2	NO	TRAY	NOTE 8
10129368-001CLF									YES		NOTE 4 & 8
10129368-001C-TRLF									YES	TAPE & REEL	NOTE 4 6 & 8
10129368-001ILF									YES	TRAY	NOTE 4 & 8
10129368-001I-TRLF	0.86	2.5	1.00	3.52	2.35	2.6		NOTE 2	YES	TAPE & REEL	NOTE 4 6 & 8
10129368-003LF									NO		TRAY
10129368-003CLF									YES	NOTE 4 & 8	
10129368-003C-TRLF									YES	NOTE 4 6 & 8	
10129368-003TRLF	NO	NOTE 6 & 8									




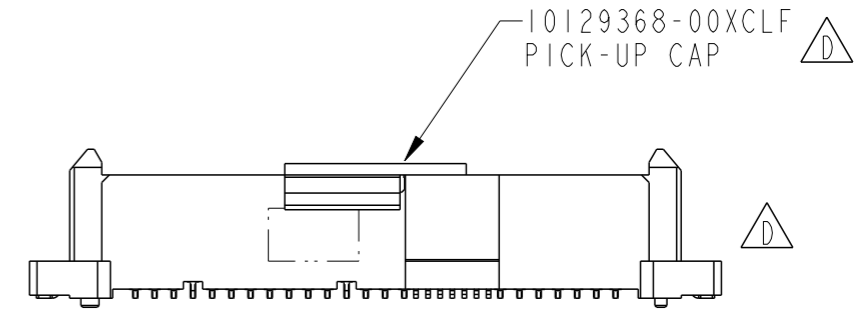
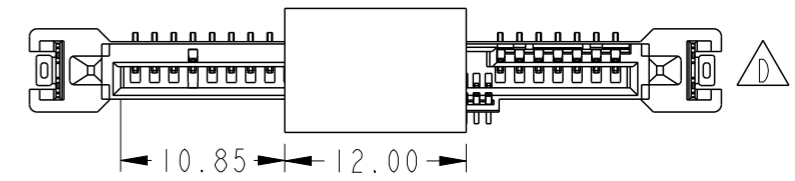
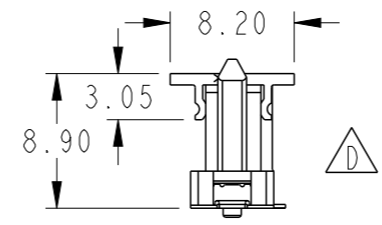
spec ref	-	dr	Vajith P-N	2014/08/08	projection	mm	size	A3	scale	3:1		
tolerance std	ISO 406 ISO 1101	eng	Wai-Bin Cho	2019/02/25		← →	ecn no	ELX-M-32558-1				
TOLERANCES UNLESS OTHERWISE SPECIFIED		chr	-	apppr			Koon-Poh Tay	2019/03/13	product family	SAS	rel level	Released
surface	linear	0.X	±-	<b>Amphenol FCI</b>		SAS RECEPTACLE VERTICAL SMT TYPE ASSY		dwg no	10129368		rev	D
ISO 1302	angular	0°	±2°					cat. no.	-	Product - Customer Drw	sheet 2 of 3	

© 2016 AFCI  
 Amphenol FCI

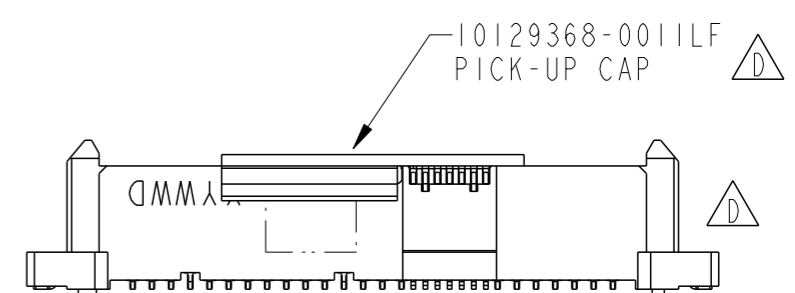
PRODUCT NUMBER  
SEE TABLE

NOTES:

1. MATERIAL :
  - 1) HOUSING : HIGH TEMP THERMOPLASTIC, UL 94V-0
  - COLOR : BLACK
  - 2) TERMINAL : COPPER ALLOY
  - 3) HOLD DOWN : COPPER ALLOY
- 2 FINISH :
  - 1) TERMINAL : 30μ" Au PLATING (CONTACT POINT) OVER 50μ" NICKEL
  - 2) SOLDER TAIL : 100μ" MIN Sn OVER 50μ" NICKEL
  - 3) HOLD DOWN : 100μ" MIN Sn OVER 50μ" NICKEL
- 3 PART WITH PICK-UP CAP, P/N XXXXXXXX-XXXCLF/XXXXXXXX-XXXILF.
- 4 THE STD PACKAGING IS IN TRAY UNLESS OTHERWISE SPECIFIED.
- 5 PART NUMBER WITH SUFFIX "-TR" MEANS FOR TAPE & REEL PACKAGING (E.G. P/N: XXXXXXXX-XXXX-TRLF).
6. THE HOUSING WILL WITHSTAND EXPOSURE TO 260°C PEAK TEMPERATURE FOR 10 SECONDS IN A CONVECTION, INFRA-RED OR VAPOR PHASE REFLOW OVEN.
7. THIS PRODUCT MEETS EUROPEAN UNION DIRECTIVES AND OTHER COUNTRY REGULATIONS AS DESCRIBED IN GS-47-0004.
- 8 PART NUMBERS ENDING IN "LF" MEANS FOR NOTE 7 LEAD FREE IDENTIFICATION
9. A  SYMBOL WILL BE NEXT TO ANY DIMENSION, VIEW, OR NOTE WHICH HAS BEEN MODIFIED WITH THE CURRENT DRAWING REVISION.
- 10 DATE CODE LOCATION. DATE CODE NO. YYWWD (E.G. 14225)



SCALE 2:1



PART WITH PICK-UP CAP, SEE NOTE 4

Amphenol  
FCi

© 2016 AFCI

spec ref -		dr	Vajith P-N	2014/08/08	projection	mm	size	A3	scale	2:1
tolerance std		eng	Wai-Bin Cho	2019/02/25		← →	ecn no	ELX-M-32558-1		
ISO 406 ISO 1101		chr	-	-				rel level	Released	
surface		appr	Koon-Poh Tay	2019/03/13	product family		SAS	rev		
ISO 1302	linear	Amphenol FCi			SAS RECEPTACLE VERTICAL SMT TYPE ASSY		dwg no	10129368		D
	angular									
cat. no.					Product - Customer Drw			sheet 3 of 3		