

THIS DRAWING IS UNPUBLISHED.

RELEASED FOR PUBLICATION

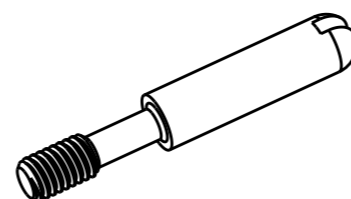
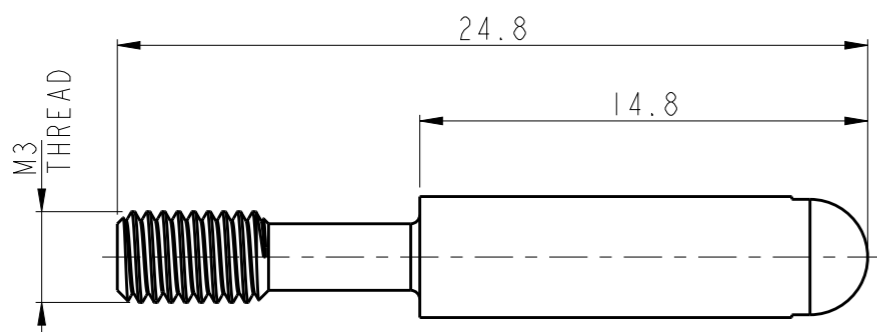
20

© COPYRIGHT 20 BY -

ALL RIGHTS RESERVED.

REVISIONS

P	LTR	DESCRIPTION	DATE	DWN	APVD
	A	INITIAL	09JAN2016	RL	CW



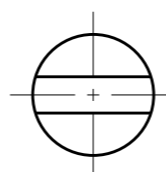
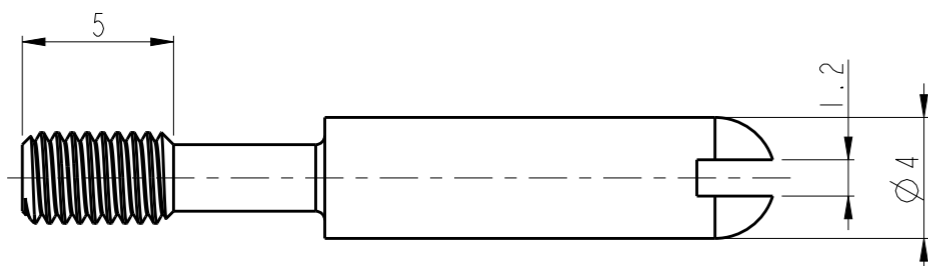
SCALE 2:1

NOTES:


- 1. TECHNICAL CHARACTERISTICS:
CODING PIN MATERIAL: SUS 303
RECOMMENDED TIGHTENING TORQUE 0.5Nm

注释:

- 1. 技术参数:
编码销材料: SUS 303
推荐拧紧力矩为0.5Nm



T0931000425-200	CODING-PIN-M3-LSTM 加长型不锈钢编码销
PART NUMBER 料号	PART DESCRIPTION 描述

THIS DRAWING IS A CONTROLLED DOCUMENT.		DWN ROY LIU 09JAN2016	 TE Connectivity NAME CODING-PIN-M3-LSTM													
DIMENSIONS: mm		CHK KYLE ZENG 09JAN2016														
TOLERANCES UNLESS OTHERWISE SPECIFIED:		APVD CHRIS WANG 09JAN2016														
<table border="1"> <tr> <td>0 PLC</td> <td>±-</td> </tr> <tr> <td>1 PLC</td> <td>±-</td> </tr> <tr> <td>2 PLC</td> <td>±-</td> </tr> <tr> <td>3 PLC</td> <td>±-</td> </tr> <tr> <td>4 PLC</td> <td>±-</td> </tr> <tr> <td>ANGLES</td> <td>±-</td> </tr> </table>		0 PLC	±-	1 PLC	±-	2 PLC	±-	3 PLC	±-	4 PLC	±-	ANGLES	±-	PRODUCT SPEC -	SIZE A3	
0 PLC	±-															
1 PLC	±-															
2 PLC	±-															
3 PLC	±-															
4 PLC	±-															
ANGLES	±-															
MATERIAL -		FINISH -	APPLICATION SPEC -	CAGE CODE 00779												
			WEIGHT -	DRAWING NO T0931000425200												
CUSTOMER DRAWING			SCALE 4:1	RESTRICTED TO -												
			SHEET 1	REV A												