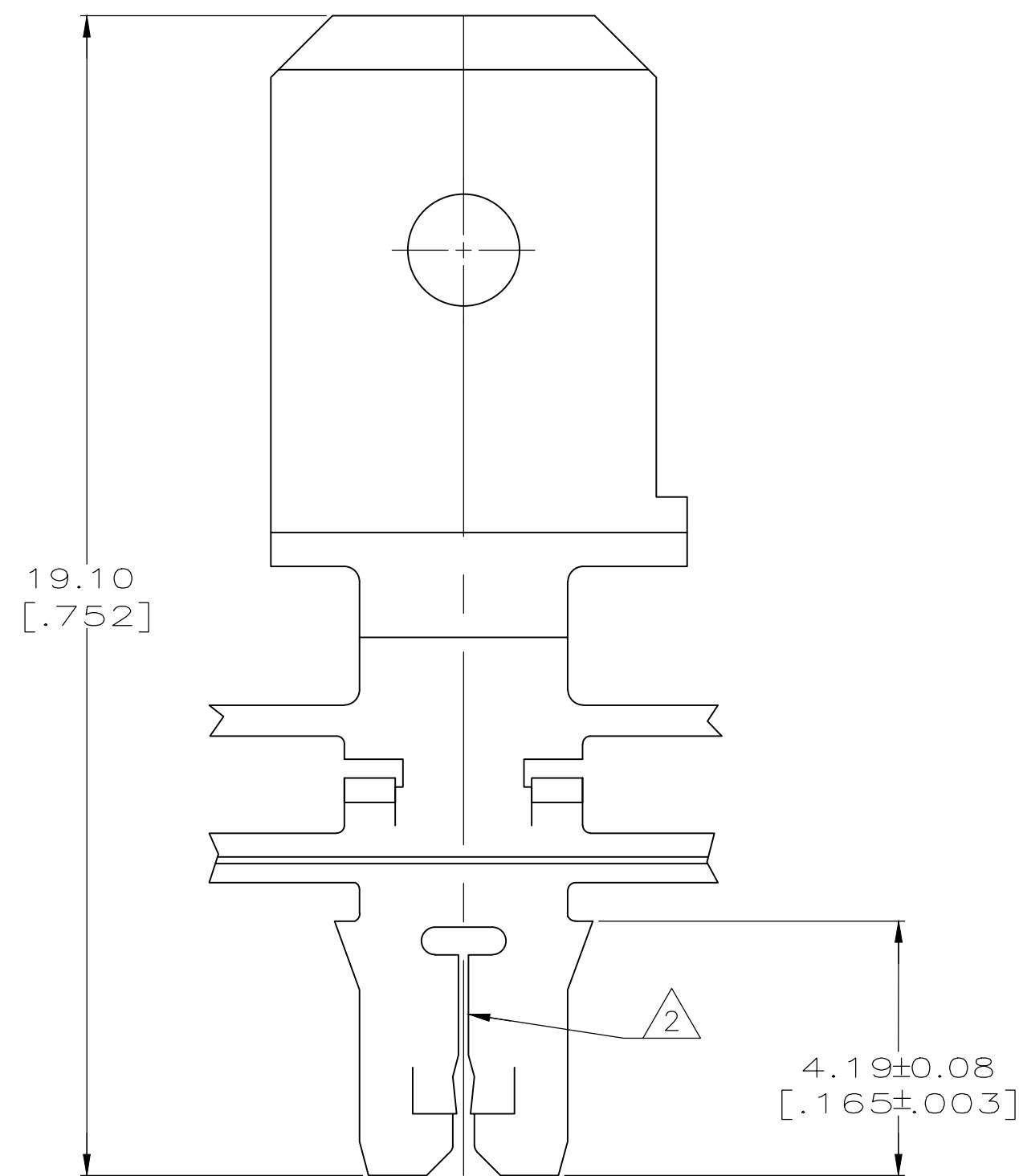
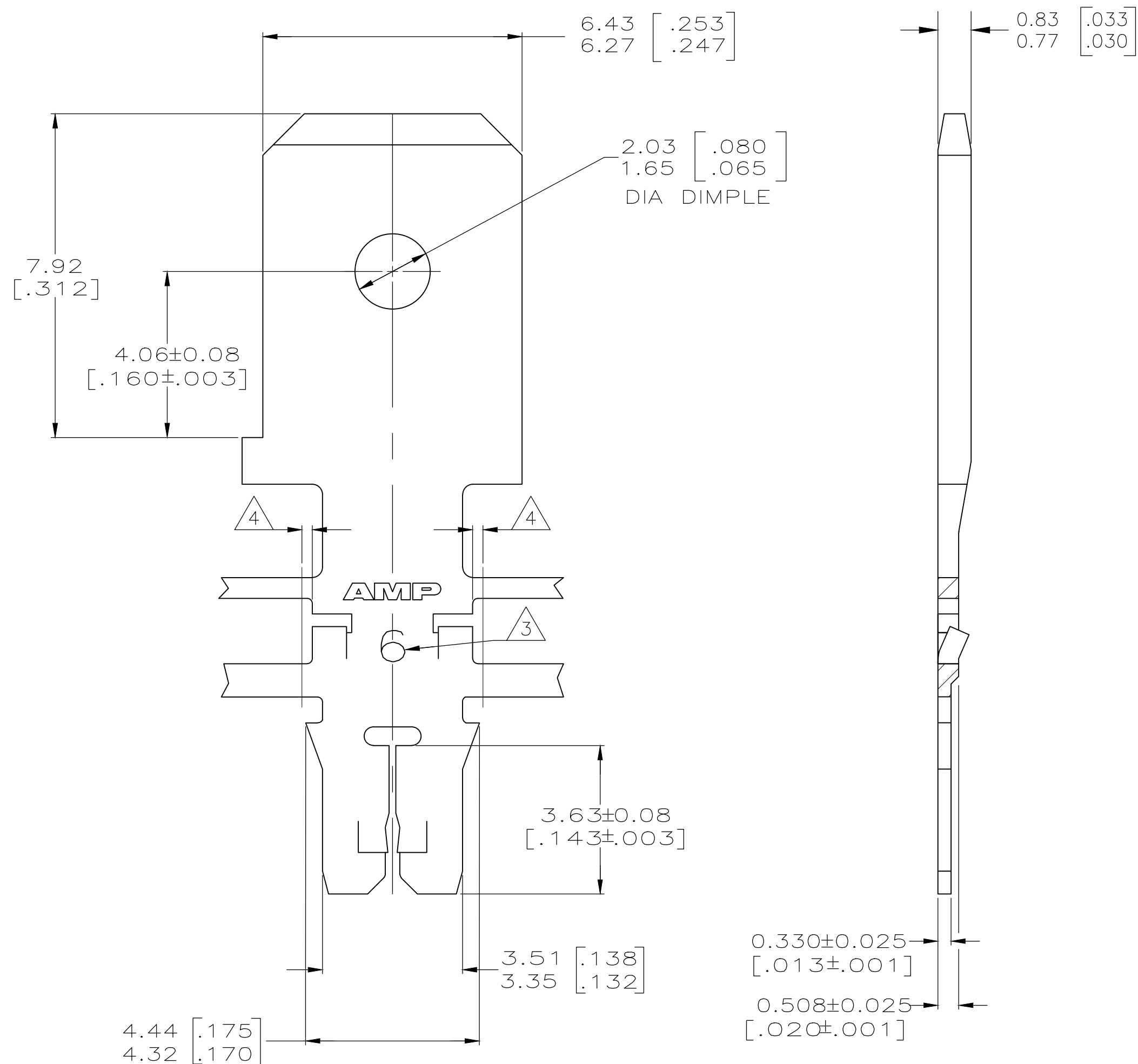


THIS DRAWING IS UNPUBLISHED. RELEASED FOR PUBLICATION
 © COPYRIGHT - TE Connectivity Ltd. ALL RIGHTS RESERVED.

REVISIONS				
P	LTR	DESCRIPTION	DATE	APVD
H2		REVISED PER ECR-18-018655	11DEC2018	BW SV

- 1 CONTINUOUS STRIP ON REELS WITH TERMINALS LOCATED ON 8.38 ± 0.08 $[\ .330 \pm .003]$ CENTERS
- 2 SLOT ACCEPTS 0.25-0.32mm $[\ #30-\#28]$ AWG COPPER MAGNET WIRE. TWO WIRES OF THE SAME SIZE MAX PER SLOT
- 3 IDENTIFICATION NUMBER 6 FOR THE MAGNET WIRE SLOT SIZE
- 4 0.25 $[\ .010]$ MAX CARRIER CUT-OFF TABS.



OBSOLETE	082 PRE-MILLED BRASS	63743-2
	4M PRE-MILLED BRASS	63743-1
	MATERIAL	PART NO

THIS DRAWING IS A CONTROLLED DOCUMENT.		DWN	L.A.MAYER	9-1-93	TE Connectivity Ltd.
DIMENSIONS: mm[INCHES]		CHK	M.S. FEHER	9-1-93	
TOLERANCES UNLESS OTHERWISE SPECIFIED:		APVD	A.HUNT III	9-1-93	
0 PLC ± - 1 PLC ± - 2 PLC ± 0.13 $[\ .005]$ 3 PLC ± - 4 PLC ± - ANGLES ± -		PRODUCT SPEC	108-1484	NAME	
MATERIAL	SEE TABLE	FINISH	0.002032 $[\ .000080]$ MIN TIN PLATE	WEIGHT	-
		APPLICATION SPEC	114-2140	SIZE	A2
		CUSTOMER DRAWING	SCALE	10:1	SHEET
					1 OF 1
					REV
					H2