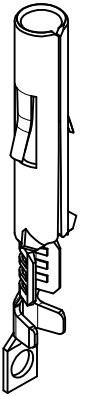
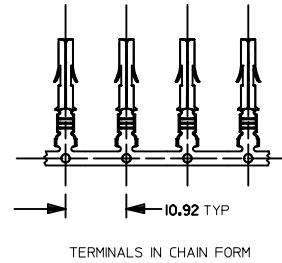
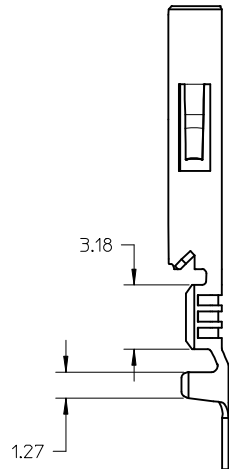
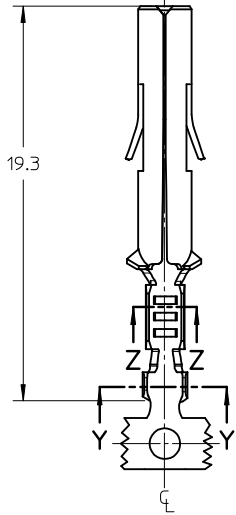


SECTION Z-Z
CONDUCTOR CRIMP AREA
SCALE 10:1

SECTION Y-Y
INSULATOR CRIMP AREA
SCALE 10:1



SOCKET TERMINAL

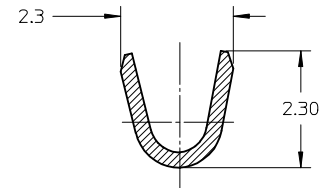
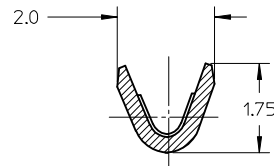
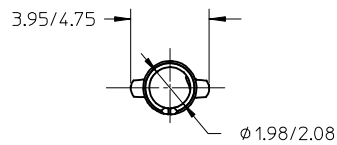


NOTES:

- SOCKET TERMINALS FOR USE WITH 2.13 DIA SERIES HOUSINGS:
PLUG(42021-**)
CAP (42022-**)
- SOCKET TERMINALS MATE WITH 42023 PIN TERMINALS 2.13 DIA SERIES
- TERMINALS FINISHED IN CHAIN FORM
- MATERIAL: 0.30 THICK STRIP:
A= BRASS, #C26000 PER SMES-124-E7
B= PHOSPHOR BRONZE, #C51000 PER SMES-124-E7
- FINISH:
HOT TIN DIP 20 m.l/0.51 microns MIN PER SDES-88-P901
- WIRE RANGE: 22-24AWG COVERS UL 1007 & UL1569
- PRODUCT SPECIFICATION: PS-42022-0001

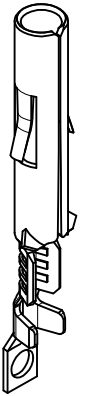
PART NO	FINISH	MATERIAL	WIRE SIZE	INSULATION DIA RANGE
42024-1019	ES-88-P901	C26000	22-24 AWG	1.2-1.8 MM
42024-1020	ES-88-P901	C51000	22-24 AWG	1.2-1.8 MM

NOTES UPDATED EC NO: I2014-0044 DRWN:SS06 CHKD: APPR: ISHWARG 2013/11/08 2013/12/02	QUALITY SYMBOLS	GENERAL TOLERANCES (UNLESS SPECIFIED)	DIMENSION STYLE MM ONLY	SCALE 4:1	DESIGN UNITS METRIC	THIRD ANGLE PROJECTION																																						
	$F_A=0$ $F_G=0$ $F_P=0$	<table border="1"> <thead> <tr> <th></th> <th>mm</th> <th>INCH</th> </tr> </thead> <tbody> <tr> <td>4 PLACES</td> <td>± ---</td> <td>± ---</td> </tr> <tr> <td>3 PLACES</td> <td>± ---</td> <td>± ---</td> </tr> <tr> <td>2 PLACES</td> <td>± 0.25</td> <td>± ---</td> </tr> <tr> <td>1 PLACE</td> <td>± 0.38</td> <td>± ---</td> </tr> <tr> <td>0 PLACE</td> <td>± ---</td> <td>± ---</td> </tr> </tbody> </table>		mm	INCH	4 PLACES	± ---	± ---	3 PLACES	± ---	± ---	2 PLACES	± 0.25	± ---	1 PLACE	± 0.38	± ---	0 PLACE	± ---	± ---	<table border="1"> <thead> <tr> <th>DRAWN BY</th> <th>DATE</th> <th>TITLE</th> </tr> </thead> <tbody> <tr> <td>SS06</td> <td>2013/10/29</td> <td rowspan="2">MLX TERMINAL SOCKET, 22-24AWG, 2.13 DIA SERIES</td> </tr> <tr> <th>CHECKED BY</th> <th>DATE</th> </tr> <tr> <td></td> <td></td> <td rowspan="2">molex</td> </tr> <tr> <th>APPROVED BY</th> <th>DATE</th> </tr> <tr> <td>ISHWARG</td> <td>2013/11/06</td> <td>SD-42024-002</td> </tr> <tr> <td></td> <td></td> <td>SEE TABLE</td> </tr> <tr> <td></td> <td></td> <td>THIS DRAWING CONTAINS INFORMATION THAT IS PROPRIETARY TO MOLEX INCORPORATED AND SHOULD NOT BE USED WITHOUT WRITTEN PERMISSION</td> </tr> </tbody> </table>	DRAWN BY	DATE	TITLE	SS06	2013/10/29	MLX TERMINAL SOCKET, 22-24AWG, 2.13 DIA SERIES	CHECKED BY	DATE			molex	APPROVED BY	DATE	ISHWARG	2013/11/06	SD-42024-002			SEE TABLE			THIS DRAWING CONTAINS INFORMATION THAT IS PROPRIETARY TO MOLEX INCORPORATED AND SHOULD NOT BE USED WITHOUT WRITTEN PERMISSION	DRAWN BY: SS06 DATE: 2013/10/29 CHECKED BY: DATE: APPROVED BY: ISHWARG DATE: 2013/11/06 MATERIAL NO.: DOCUMENT NO.: SHEET NO.: 1 OF 1
		mm	INCH																																									
	4 PLACES	± ---	± ---																																									
3 PLACES	± ---	± ---																																										
2 PLACES	± 0.25	± ---																																										
1 PLACE	± 0.38	± ---																																										
0 PLACE	± ---	± ---																																										
DRAWN BY	DATE	TITLE																																										
SS06	2013/10/29	MLX TERMINAL SOCKET, 22-24AWG, 2.13 DIA SERIES																																										
CHECKED BY	DATE																																											
		molex																																										
APPROVED BY	DATE																																											
ISHWARG	2013/11/06	SD-42024-002																																										
		SEE TABLE																																										
		THIS DRAWING CONTAINS INFORMATION THAT IS PROPRIETARY TO MOLEX INCORPORATED AND SHOULD NOT BE USED WITHOUT WRITTEN PERMISSION																																										
	ANGULAR ± 1 °	DRAFT WHERE APPLICABLE MUST REMAIN WITHIN DIMENSIONS	SIZE A3																																									

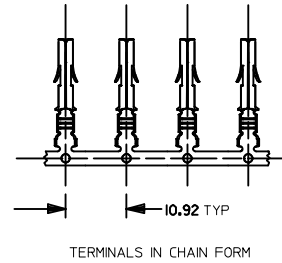
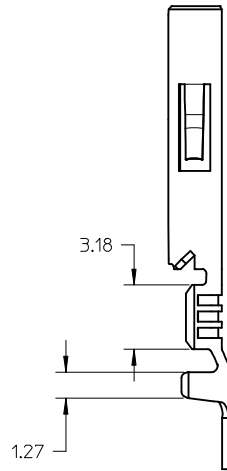
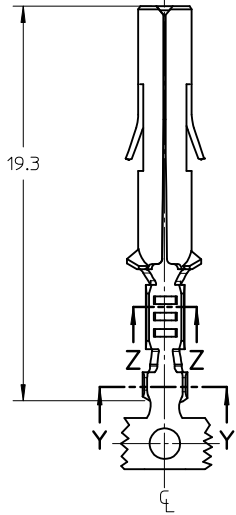


SECTION Z-Z
CONDUCTOR CRIMP AREA
SCALE 10:1

SECTION Y-Y
INSULATOR CRIMP AREA
SCALE 10:1



SOCKET TERMINAL



NOTES:

- SOCKET TERMINALS FOR USE WITH 2.13 DIA SERIES HOUSINGS:
PLUG(42021-**)
CAP (42022-**)
- SOCKET TERMINALS MATE WITH 42023 PIN TERMINALS 2.13 DIA SERIES
- TERMINALS FINISHED IN CHAIN FORM
- MATERIAL: 0.30 THICK STRIP:
A= BRASS, #C26000 PER SMES-124-E7
B= PHOSPHOR BRONZE, #C51000 PER SMES-124-E7
- FINISH:
HOT TIN DIP 20 m.l/0.51 microns MIN PER SDES-88-P901
- WIRE RANGE: 22-24AWG COVERS UL 1007 & UL1569
- PRODUCT SPECIFICATION: PS-42022-0001

PART NO	FINISH	MATERIAL	WIRE SIZE	INSULATION DIA RANGE
42024-1019	ES-88-P901	C26000	22-24 AWG	1.2-1.8 MM
42024-1020	ES-88-P901	C51000	22-24 AWG	1.2-1.8 MM

NOTES UPDATED EC NO: I2014-0044 DRWN:SS06 CHKD: APPR: ISHWARG 2013/11/08 2013/12/02	QUALITY SYMBOLS	GENERAL TOLERANCES (UNLESS SPECIFIED)	DIMENSION STYLE	SCALE	DESIGN UNITS	THIRD ANGLE PROJECTION	
	$F_A=0$ $F_G=0$ $F_P=0$	mm INCH 4 PLACES ± --- ± --- 3 PLACES ± --- ± --- 2 PLACES ± 0.25 ± --- 1 PLACE ± 0.38 ± --- 0 PLACE ± --- ± ---	MM ONLY	4:1	METRIC	DRAWN BY: SS06 DATE: 2013/10/29 CHECKED BY: DATE: APPROVED BY: ISHWARG DATE: 2013/11/06 MATERIAL NO. DOCUMENT NO.	MLX TERMINAL SOCKET, 22-24AWG, 2.13 DIA SERIES molex
		ANGULAR ± 1 °	SEE TABLE			SD-42024-002	SHEET NO. 1 OF 1
		DRAFT WHERE APPLICABLE MUST REMAIN WITHIN DIMENSIONS		SIZE A3	THIS DRAWING CONTAINS INFORMATION THAT IS PROPRIETARY TO MOLEX INCORPORATED AND SHOULD NOT BE USED WITHOUT WRITTEN PERMISSION		