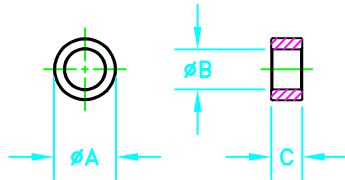


NOTES:

1 - BURNISH TO BREAK SHARP EDGES.

SIZE	PART NO.	REV.
B	5961004101	2



A	B	C
12.45/12.95	8.00/8.40	6.10/6.60
.500	.323	.250

ELECTRICAL SPECIFICATIONS						
$\Sigma l/A(\text{mm}^{-1})$	l_e (mm)	A_e (mm ²)	V_e (mm ³)	L_o (nH)	A_L (nH) @10kHz <10gauss	$\tan \delta/\mu$ @1MHz 1gauss
2.2618	31.8	14.06	447	0.556	68±25%	≤75×10 ⁻⁶

Bold numbers are in millimeters**, light numbers are in inches

2	B-6859	A _L TOLERANCE WAS ±20%		D.S.	06-22-05	
1	B-2688	ADDED LOSS FACTOR SPECIFICATION		D.S.	06-10-02	
REV.	ECN	DESCRIPTION			DRFT	DATE
REVISIONS						
APPLICABLE SPECS		DRAWING CLASS	FAIR-RITE PRODUCTS CORP.			
Tolerances Unless Otherwise Indicated		MATERIAL	TITLE			
3PL 2PL FRACT ANGLE		FR# 61	TOROID			
		FINISH	DRAWN BY K. ROOSA	DATE 03-26-1998	SIZE	PART NO.
			CHKD BY		B	5961004101
			APPRVD BY			2
			SCALE	NONE	SHEET 1 of 1	