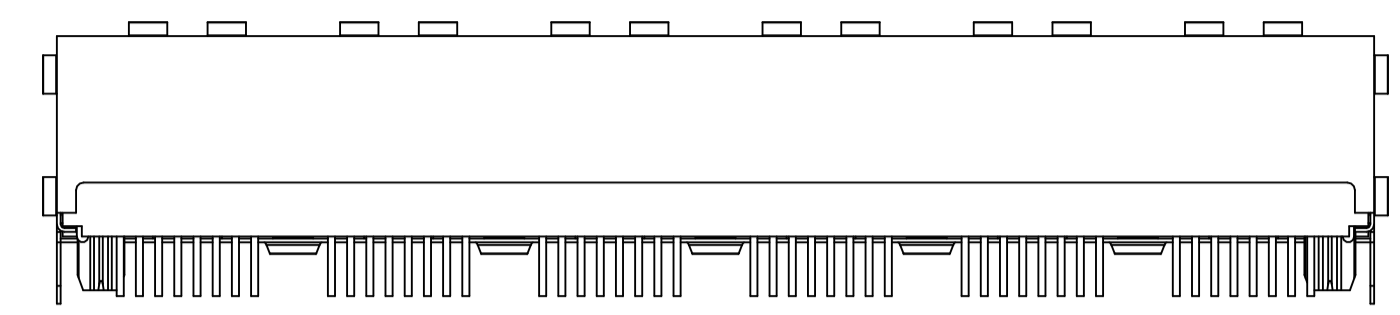
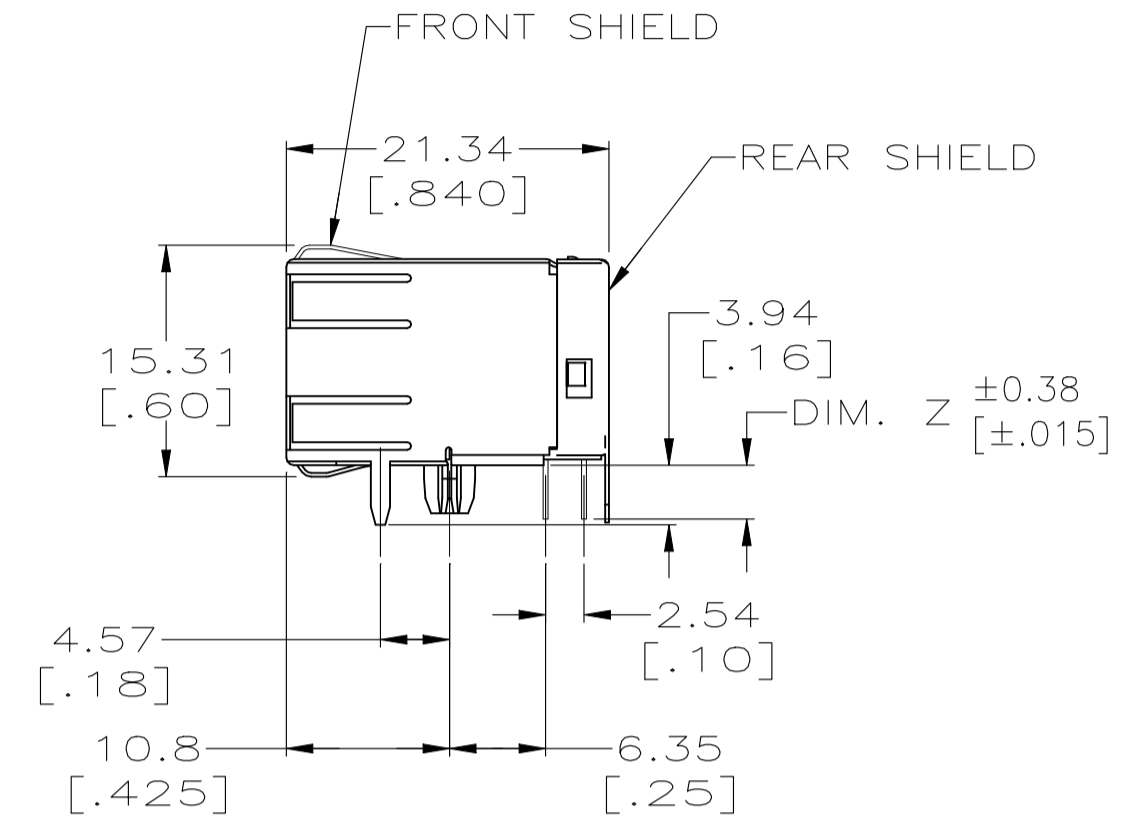
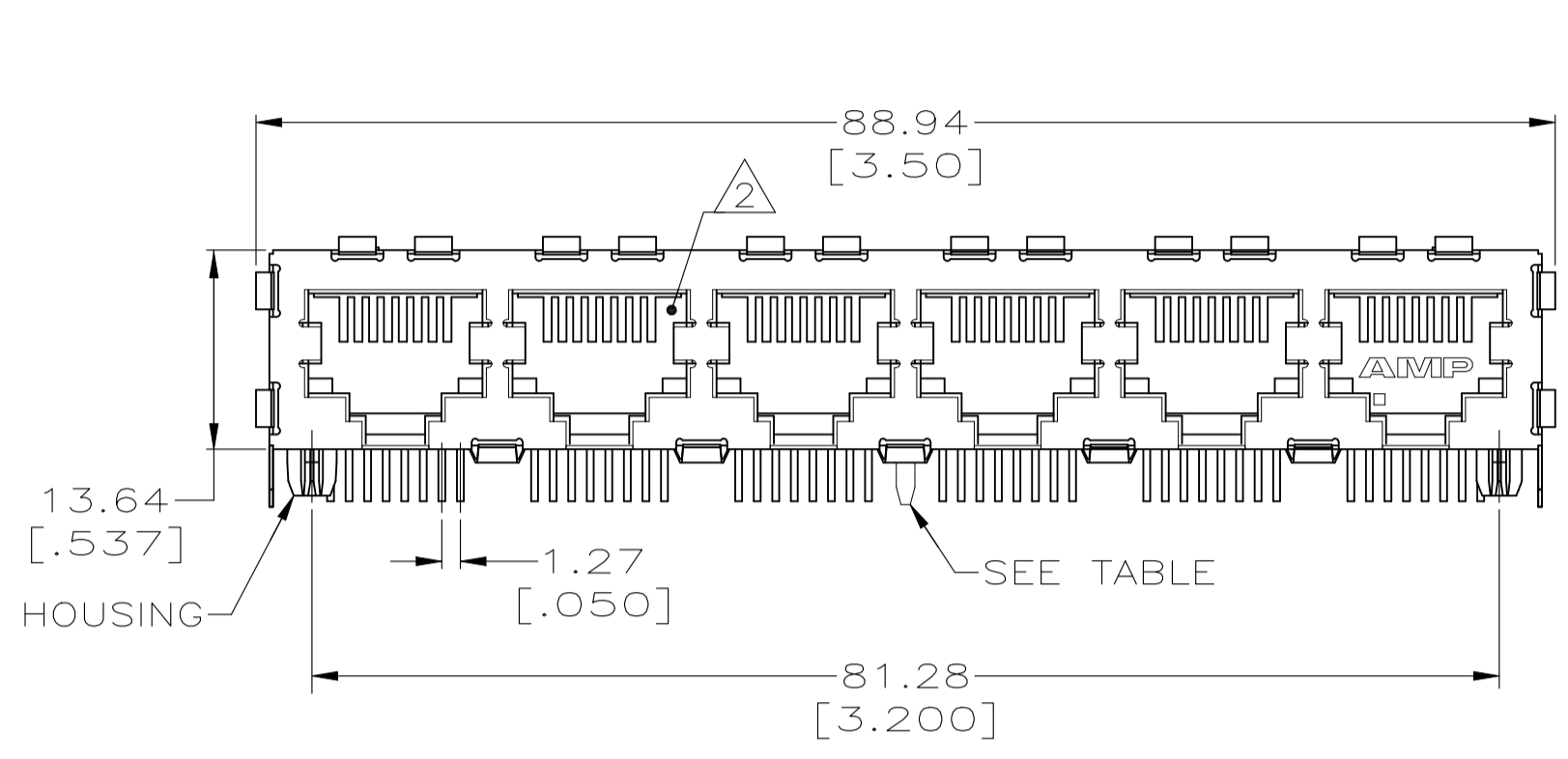
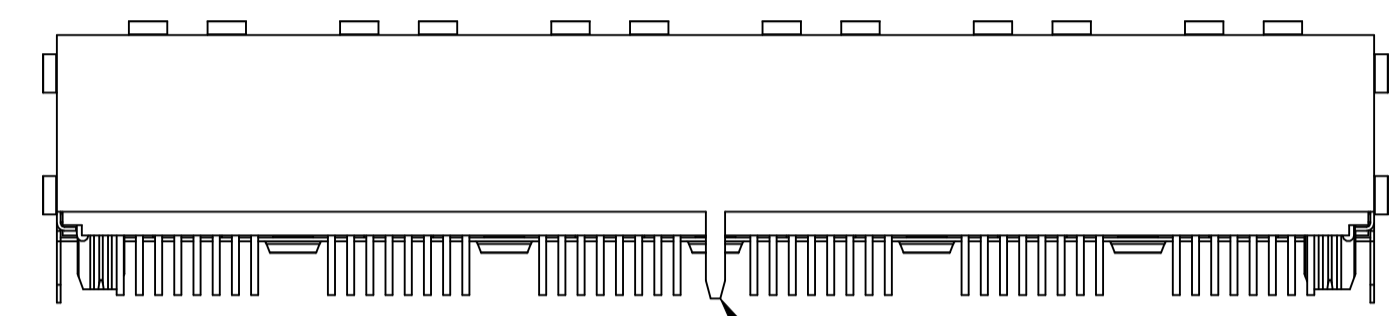


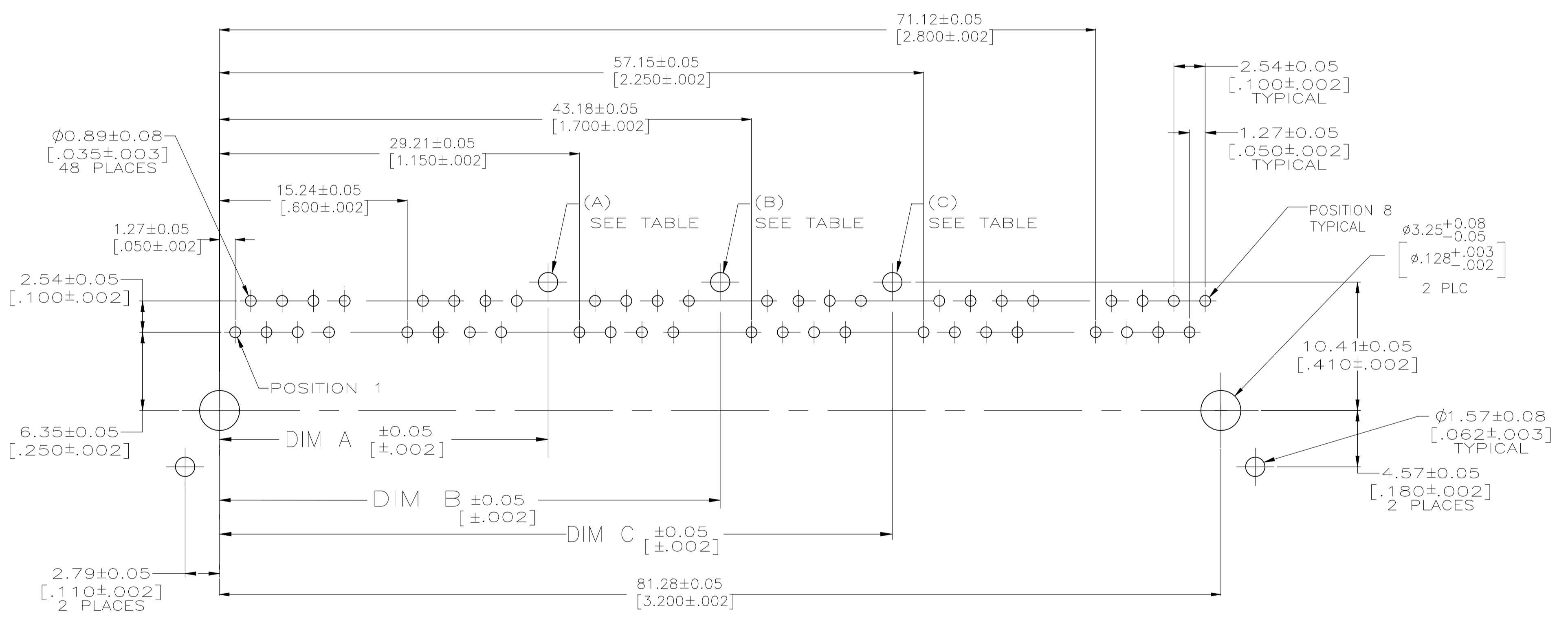
REVISIONS					
REV	DESCRIPTION	DATE	BY	APP'D	
E1	ECR-19-014657	13DEC2020	RR	SZ	



ONLY FOR 5406206-4



- △ MATERIAL: HOUSING - NYLON, BLACK, UL 94V-0. OVERMOLDED TERMINAL ARRAY - PBT, BROWN. TERMINALS - 0.33[.013] THICK PHOS BRONZE PLATED WITH 1.27 μm[.000050] MINIMUM HARD GOLD IN LOCALIZED AREA AND 3.81 μm[.000150] MINIMUM MATTE TIN IN SOLDER AREA OVER 1.27 μm[.000050] MINIMUM NICKEL UNDERPLATE. SHIELDS - 0.25 [.010] THICK COPPER ALLOY PLATED WITH 1.27 μm[.000050] MINIMUM NICKEL AND 2.03 μm[.000080] MINIMUM HOT TIN DIP ON PCB GROUND TABS.
- △ JACK CAVITY CONFORMS TO FCC RULES AND REGULATIONS, PART 68 SUBPART F.
- △ OBSOLETE PARTS: OBSOLETE CIS STREAMLINING PER D.RENAUD/D.SINISI
- △ ENLARGED THE DISTANCE BETWEEN THE CONTACTS AND SHIELD
- △ MATERIAL: HOUSING - NYLON, BLACK, UL 94V-0. OVERMOLDED TERMINAL ARRAY - PBT, BROWN. TERMINALS - 0.33[.013] THICK PHOS BRONZE PLATED WITH 0.76 μm[.000030] MINIMUM HARD GOLD IN LOCALIZED AREA AND 3.81 μm[.000150] MINIMUM MATTE TIN IN SOLDER AREA OVER 1.27 μm[.000050] MINIMUM NICKEL UNDERPLATE. SHIELDS - 0.25 [.010] THICK COPPER ALLOY PLATED WITH 1.27 μm[.000050] MINIMUM NICKEL AND 2.03 μm[.000080] MINIMUM HOT TIN DIP ON PCB GROUND TABS.



RECOMMENDED PC BOARD LAYOUT
COMPONENT SIDE (TOP)
SCALE 4:1

REV	DESCRIPTION	DATE	BY	APP'D	
3	OBSOLETE	3.56 [.140]	NA	40.64 [1.600]	54.61 [2.150]
		3.56 [.140]	26.67 [1.050]	40.64 [1.600]	54.61 [2.150]
		3.56 [.140]	NA	40.64 [1.600]	NA
		3.56 [.140]	NA	NA	NA
	MATERIAL	DIM Z	DIM A	DIM B	DIM C
					NUMBER OR REAR PCB SHIELD GROUND TABS
					PART NO

THIS DRAWING IS A CONTROLLED DOCUMENT.

DIMENSIONS: mm [INCHES]	TOLERANCES UNLESS OTHERWISE SPECIFIED:	DIN T. SPRINKLE/L.A. MAYER 25MAY2005	APVD J.WESTMAN 25MAY2005	NAME S.FLICKINGER
0 PLC ± -	1 PLC ± -	2 PLC ± 0.25[.01]	3 PLC ± 0.13[.005]	4 PLC ± -
MATERIAL SEE NOTE 1		FINISH SEE NOTE 1		WEIGHT 0.000000
CUSTOMER DRAWING		SCALE 2:1	SHEET 1 of 1	REV E1

STE TE Connectivity

MODULAR JACK ASSY,
6 PORT, 8 POSN, SHIELDED,
REVERSE PANEL GROUND TABS, CAT 5e

108-1163-2

114-2048

00779 5406206