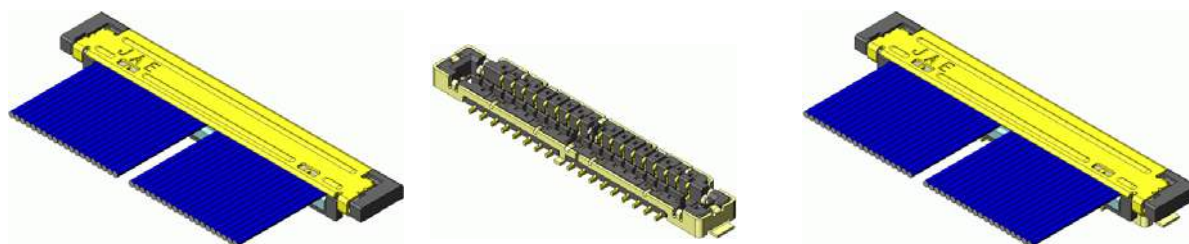




FI-JW Series

RoHS Compliant

The FI-JW Series is a compact, low profile connector with a plug that can pass through a very small diameter hinge after harness assembly.

Features

- Plug side can pass through a 3.7mm dia. hinge after harness assembly (40 pos., 42 AWG)
- Mated dimensions of 3.2mm depth, 17.3mm width (40 pos.), 1.65mm height
- Stable connection by a secure 0.35 mm effective contact length.
- Enhanced connection stability with gold plated ground contact points on plug and receptacle
- Mis-mating prevention structure
- Enhanced noise resistance characteristic with 6 ground contact points between plug and receptacle
- Applicable wire: compatible with 42 and 44 AWG fine-coaxial wire
- Supports automated mounting with embossed tape for receptacle
- Solder migration prevention structure with Ni barrier on receptacle

General Specifications

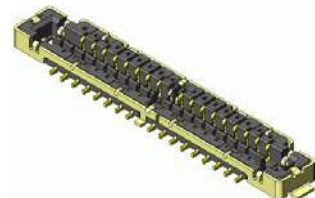
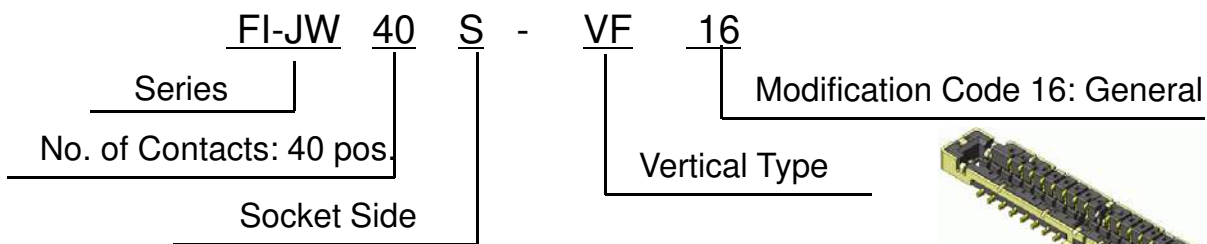
- No. of Contacts: 30, 34, 40, 50 pos.
- Pitch: 0.3mm
- Operating Temperature:
-40 Deg. C to +85 Deg. C
- Contact Resistance:
40m ohm max. (initial)
- Durability: 30 mating cycles
- Rated Current: AC, DC each 0.25A per pos.
- Rated Voltage: AC, DC each 50V per pos.
- Insulation Resistance: 100M ohm min.
- Dielectric Withstanding Voltage :
AC 100Vr. m.s per minute
- Applicable Wire: 42 to 44 AWG

Materials and Finishes

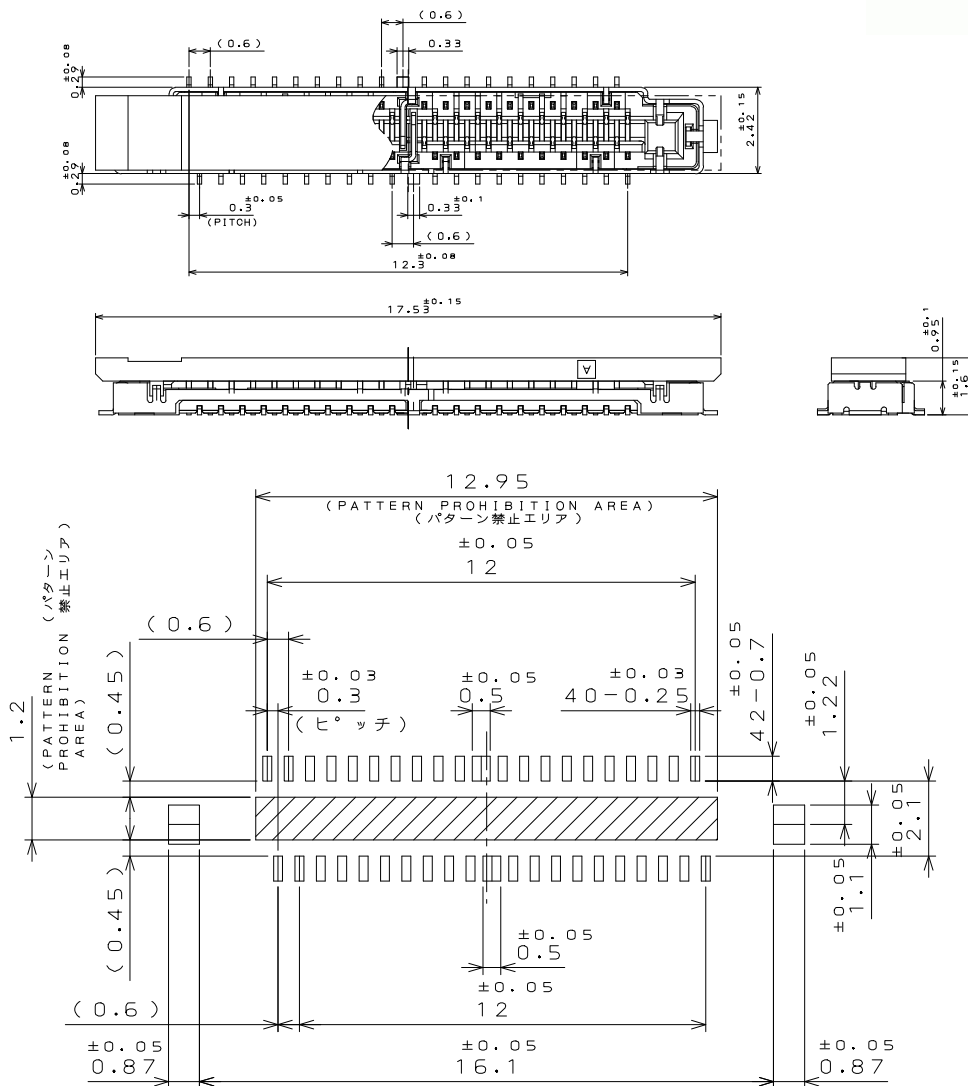
Component	Material / Finish
Receptacle (FI-JW**S-VF16)	
Contact	Copper alloy / Contact area Au plating over Ni, Terminal area Au flash plating over Ni
Shell	Copper alloy / Contact area Au plating over Ni
Insulator	Heat resistant plastic UL94V-0
Adsorption Insulator	Heat resistant plastic UL94V-0
Plug (FI-JW**C)	
Contact	Copper alloy / Contact area Au plating over Ni, Terminal area Au flash plating over Ni
Insulator	Heat resistant plastic UL94V-0
Plug / Base Ground Bar (FI-JW**C-BGB-**)	
Base Ground Bar	Stainless steel / Contact area Au plating over Ni Terminal area Sn plating over Ni
Plug / Cover Ground Bar (FI-JW**C-CGB-**)	
Cover Ground Bar	Copper alloy / Sn plating over Ni
Plug / Cover Shell (FI-JW**C-SH1)	
Cover shell	Stainless steel / Au flash plating over Ni

Ordering Information

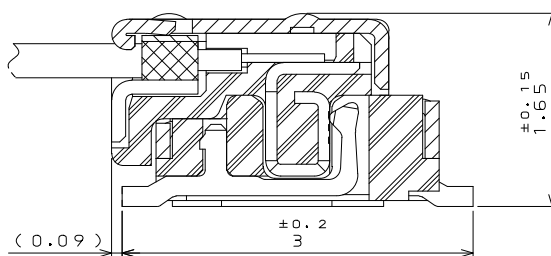
Receptacle Side
Individual Product
(40 pos. : SJ106319)



Unit: mm



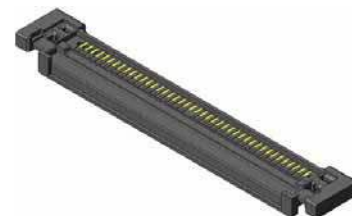
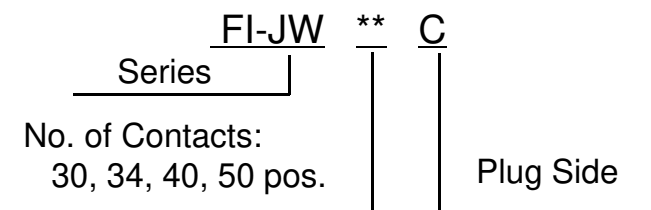
Recommended dimensions of board



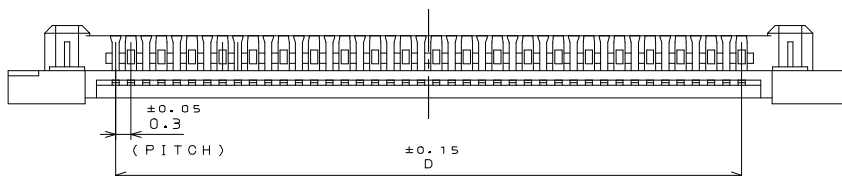
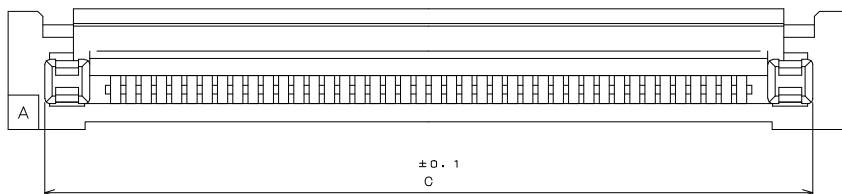
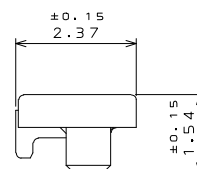
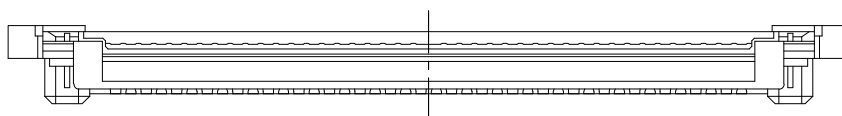
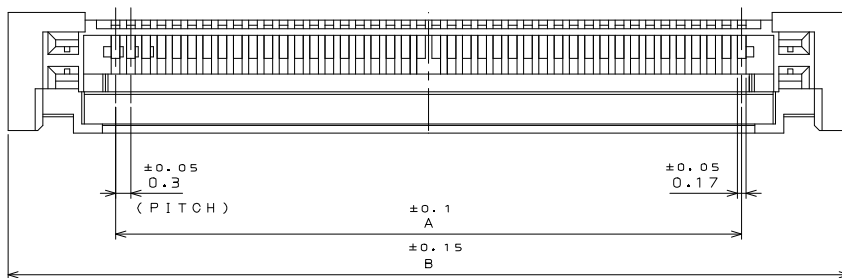
Drawing when mated
(for reference)

Ordering Information

Plug Side, Insulator (SJ106335)



Unit: mm



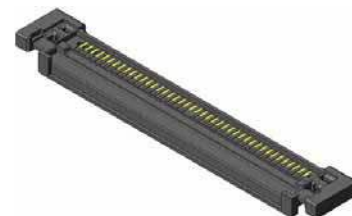
Dimensions

No. OF CONTACTS (N)	30	34	40	50
A	9.3	10.5	12.3	15.3
B	13.53	14.73	16.53	19.53
C	12.09	13.29	15.09	18.09
D	9.3	10.5	12.3	15.3

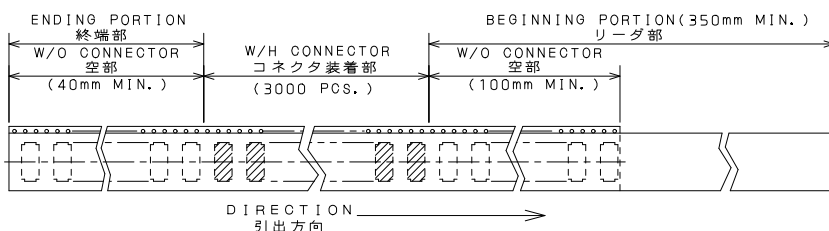
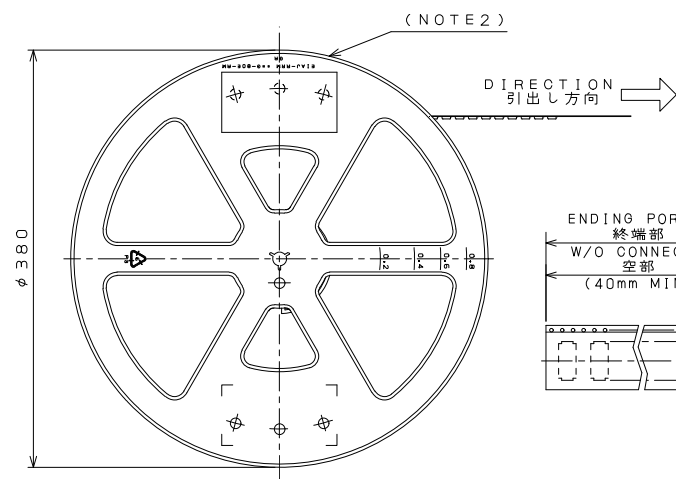
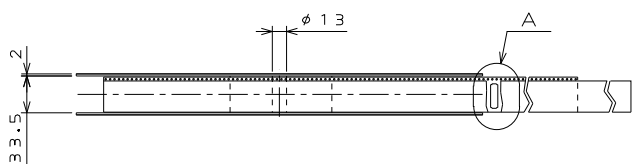
Ordering Information

Plug Side, Insulator
Emboss Product (SJ10336)

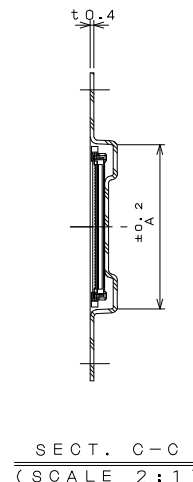
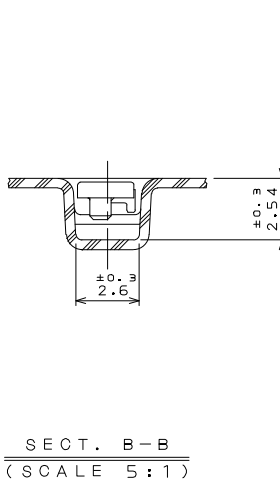
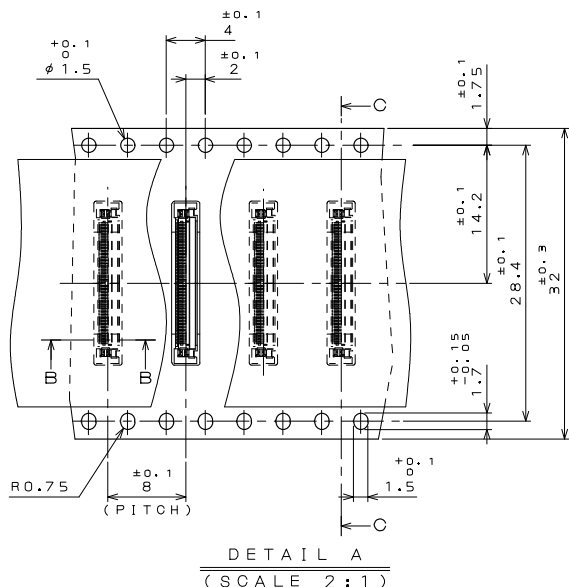
Series **FI-JW** ** C - R3000
 No. of Contacts: 30, 34, 40, 50 pos. Emboss Product 3000pcs. / reel
 Plug Side



Unit: mm

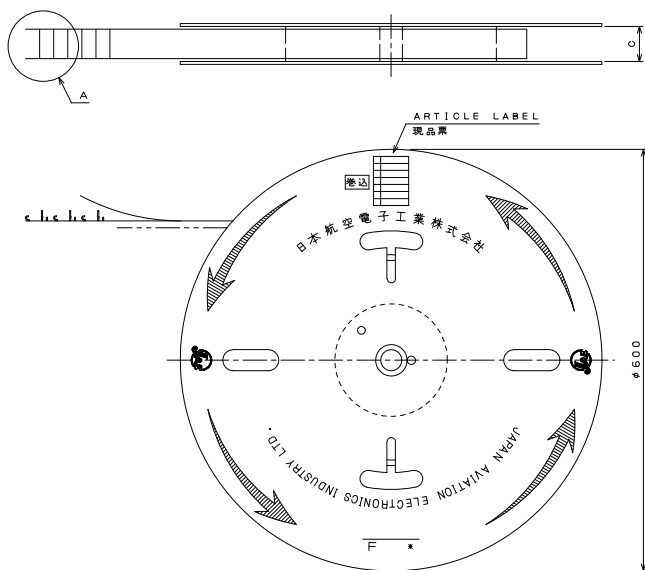
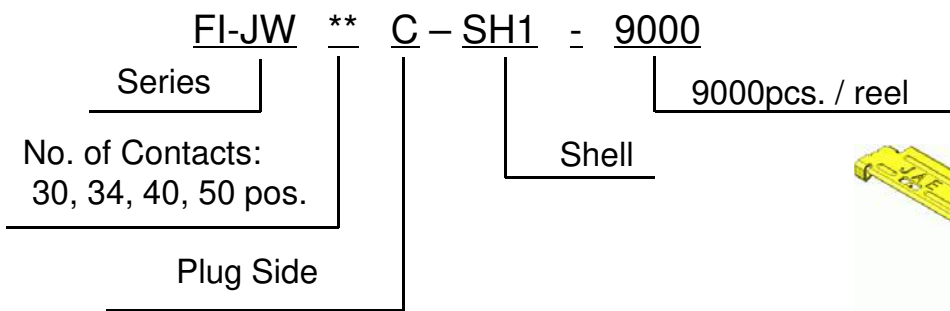


NO. OF CONTACTS 芯数	DIMENSIONS 寸法	A
30		13.9
34		15.1
40		16.9
50		19.9

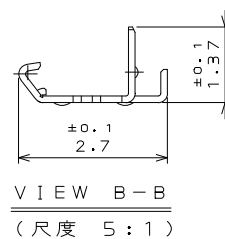
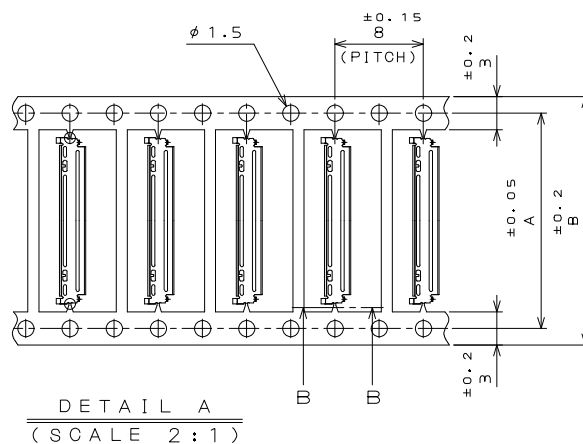


Ordering Information

Plug Side, Shell (SJ106357)



Unit: mm

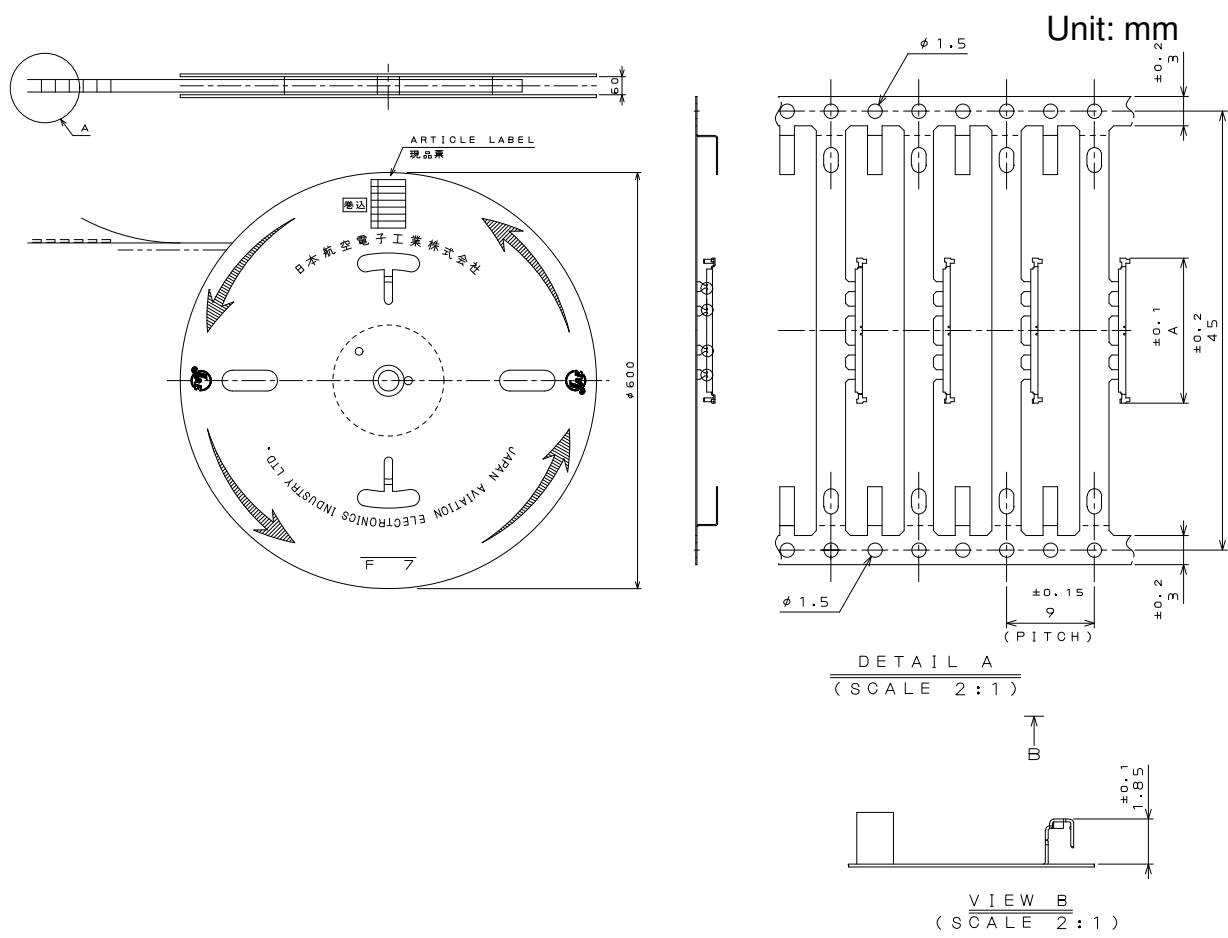
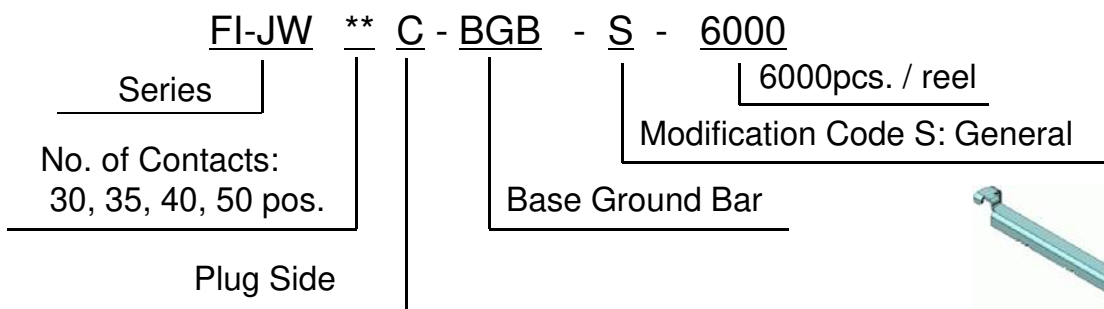


Dimensions

NO. OF CONTACTS 芯数	DIMENSIONS 寸法			TITLE 名称
	A	B	C	
30	16.5	19.5	26	F 1
34	17.7	20.7	26	F 1
40	19.5	22.5	32	F 3
50	22.5	25.5	32	F 3

Ordering Information

Plug Side, Base Ground Bar
(SJ106358)

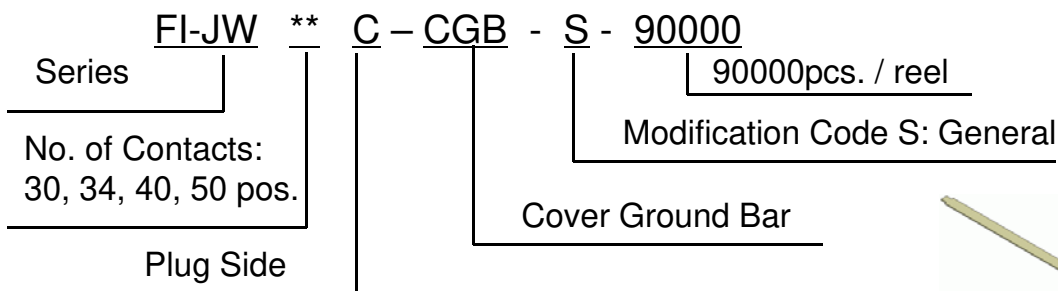


Dimensions

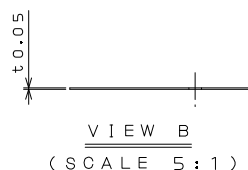
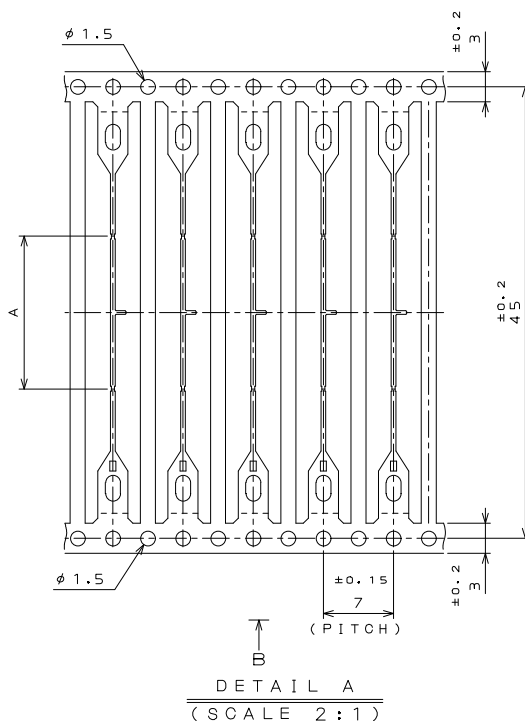
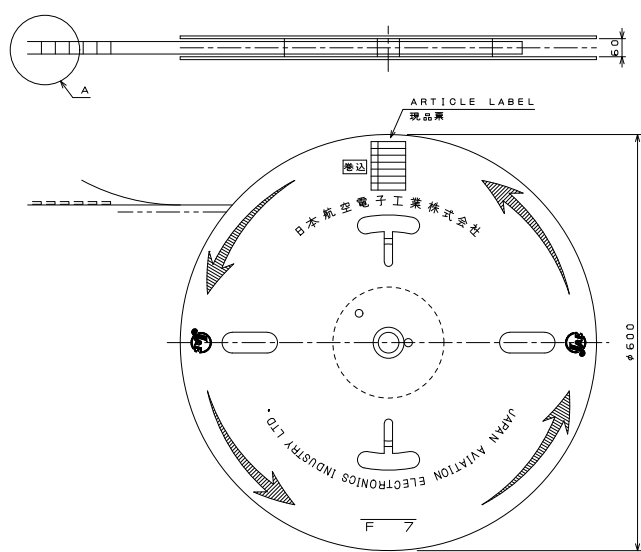
NO. OF CONTACTS 芯数	DIMENSIONS 寸法	A
30		11.86
34		13.06
40		14.86
50		17.86

Ordering Information

Plug Side, Cover Ground Bar (SJ106360)




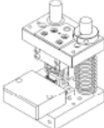
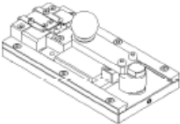
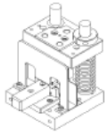

Unit: mm



Dimensions

NO. OF CONTACTS 芯数	DIMENSIONS 寸法	A
30		12.26
34		13.46
40		15.26
50		18.26

Related Documents

- Specifications (JACS): JACS- 10345-5
- Harness Assembly Handling Instructions (JAHL): JAHL-10345-1
- Connector Handling Instructions (JAHL): JAHL-10345-10
- Connector Extraction Tool
 SJ Drawing: SJ713199-00
 P/N :SC-FIJW-2-K
 Tool Handling Instruction :T713199
 
- Plug Shell Press-in Tool
 P/N :WT-FIJW-2(B)-**
 Tool Handling Instruction T714230
 
- Plug Shell Clamping Tool
 P/N :WT-FIJW-5(B)-**
 Tool Handling Instruction :T714233
 
- Plug Ground Bar Cutting Tool
 P/N :WT-FIJW-10-**
 Tool Handling Instruction :T714261
 
- Plug Ground Bar Press-in Tool
 P/N :WT-FIJW-1-**
 Tool Handling Instruction :T714299
 

Japan Aviation Electronics Industry, Limited

Notice: Products shown in this leaflet are made for the applications listed below. However, if the above-mentioned products are to be used in aerospace devices, marine cable-connection devices, atomic power control systems, medical equipment for life-support systems, or any other specific application requiring extremely high reliability, please contact JAE for further information.

Recommended applications: computers, office machines, measuring devices, telecommunication devices (terminals, mobile devices), AV devices, household applications, FA devices, etc.