

177914-1 ✓ ACTIVE



Power Double Lock

TE Internal #: 177914-1

Power Contacts, Contact, 50 VAC / 300 VAC, Tin, 26 – 22 AWG

Wire Size, .14 – .34 mm² Wire Size, Wire & Cable, Crimp, Power,

Power Double Lock

[View on TE.com >](#)

Connectors > Power Connectors > Power Contacts > Power Double Lock Receptacle



Power Contact Type: **Contact**

Operating Voltage: **50 VAC, 300 VAC**

Contact Mating Area Plating Material: **Tin**

Wire Size: **.14 – .34 mm²**

[All Power Double Lock Receptacle \(6\)](#)

Features

Product Type Features

Compatible With Discrete Wire Type	Stranded
Power Contact Type	Contact
Connector & Contact Terminates To	Wire & Cable

Electrical Characteristics

Operating Voltage	50 VAC, 300 VAC
-------------------	-----------------

Contact Features

Contact Mating Area Plating Material	Tin
Contact Current Rating (Max)	14 A
Contact Type	Receptacle
Contact Retention Within Housing	With
Mating Tab Width	1.5 mm[.06 in]
Mating Tab Thickness	.5 mm[.02 in]
Contact Base Material	Copper Alloy



Contact Mating Area Plating Material Thickness	.8 μm[31.49 μin]
Wire Contact Termination Area Plating Thickness	.8 μm[31.49 μin]
Wire Contact Termination Area Plating Material	Pre-Tin
Wire Contact Termination Area Plating Material Finish	Matte
Contact Orientation	Straight

Termination Features

Termination Method to Wire & Cable	Crimp
------------------------------------	-------

Mechanical Attachment

Contact Retention Type Within Housing	Locking Lance
Wire Insulation Support	With

Dimensions

Wire Size	.14 – .34 mm ²
Compatible Insulation Diameter Range	1.3 – 2 mm[.051 – .079 in]

Usage Conditions

Operating Temperature Range	-30 – 105 °C[-22 – 221 °F]
-----------------------------	----------------------------

Operation/Application

Circuit Application	Power
---------------------	-------

Packaging Features

Packaging Quantity	5000
Packaging Method	Reel

Product Compliance

[For compliance documentation, visit the product page on TE.com>](#)

EU RoHS Directive 2011/65/EU	Compliant
EU ELV Directive 2000/53/EC	Compliant
China RoHS 2 Directive MIIT Order No 32, 2016	No Restricted Materials Above Threshold
EU REACH Regulation (EC) No. 1907/2006	Current ECHA Candidate List: JUNE 2023 (235) Candidate List Declared Against: JUNE 2023 (235) Does not contain REACH SVHC
Halogen Content	Low Halogen - Br, Cl, F, I < 900 ppm per homogenous material. Also BFR/CFR/PVC Free

Solder Process Capability

Not applicable for solder process capability

Product Compliance Disclaimer

This information is provided based on reasonable inquiry of our suppliers and represents our current actual knowledge based on the information they provided. This information is subject to change. The part numbers that TE has identified as EU RoHS compliant have a maximum concentration of 0.1% by weight in homogenous materials for lead, hexavalent chromium, mercury, PBB, PBDE, DBP, BBP, DEHP, DIBP, and 0.01% for cadmium, or qualify for an exemption to these limits as defined in the Annexes of Directive 2011/65/EU (RoHS2). Finished electrical and electronic equipment products will be CE marked as required by Directive 2011/65/EU. Components may not be CE marked. Additionally, the part numbers that TE has identified as EU ELV compliant have a maximum concentration of 0.1% by weight in homogenous materials for lead, hexavalent chromium, and mercury, and 0.01% for cadmium, or qualify for an exemption to these limits as defined in the Annexes of Directive 2000/53/EC (ELV). Regarding the REACH Regulation, the information TE provides on SVHC in articles for this part number is based on the latest European Chemicals Agency (ECHA) 'Guidance on requirements for substances in articles' posted at this URL: <https://echa.europa.eu/guidance-documents/guidance-on-reach>

Compatible Parts



TE Part # CAT-P87024-P729
STD Temp Power Double Lock Plug



TE Part # 917354-1
AMP POWER D/LOCK PLUG HDR 12P



TE Part # 1-179466-5
AMP POWER DBL LOCK CAP HSG 6P Black



TE Part # 2305570-1
Strip Terminal Cutter-Side Feed-No Crimp



TE Part # CAT-P87024-P729A
Glow Wire Power Double Lock Plug



TE Part # CAT-P87024-C1701A
Glow Wire Power Double Lock Cap



TE Part # 2005249-9
PDL 2P CAP 3.96 P/M(GWT) BLK



TE Part # 368588-6
PDL 6P CAP 3.96 D/R P/M(GWT) B



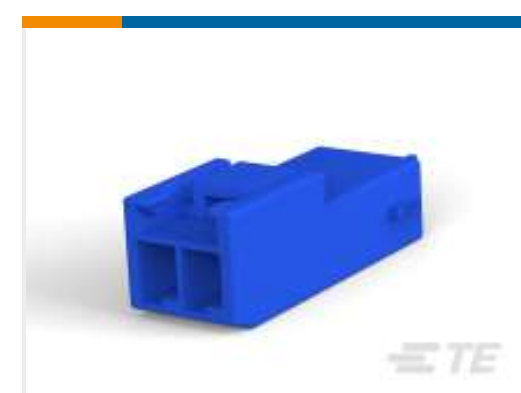
TE Part # CAT-P87024-H342
STD Temp Power Double Lock Header



TE Part # CAT-P87024-C1701
STD Temp Power Double Lock Cap



TE Part # 91567-1
CCII POWER DBL LOCK S REC TAB 26-22 ASSY



TE Part # 2005248-6
PDL 2P CAP 3.96 F/H(GWT) BLU



TE Part # 234912-1
EXT TOOL FOR POWER DBL LOK REC



TE Part # 5-179464-1
POWER DBL LOCK CAP HSG F/H 3P (GWT)



TE Part # 1-179840-1
PDL 4P HDR 3.96 DR V/T ASSY NAT



TE Part # 1-179840-4
PDL 4P HDR 3.96 DR V/T ASSY YEL



TE Part # 1-179840-6
PDL 4P HDR 3.96 DR V/T ASSY BLU



TE Part # 1-179844-1
PDL 2P HDR 7.92 SR V/T ASSY NAT

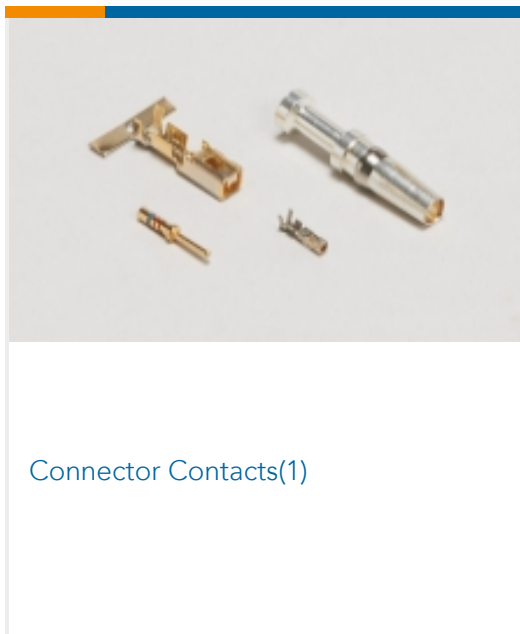


TE Part # 1-179844-2
PDL 2P HDR 7.92 SR V/T ASSY RED

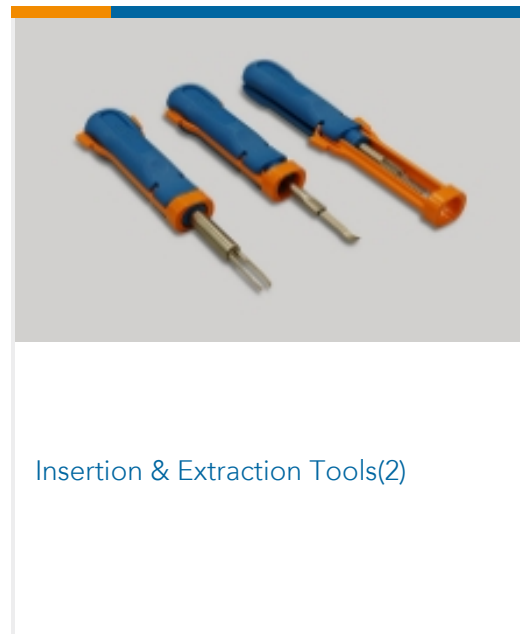


TE Part # 1-179844-4
PDL 2P HDR 7.92 SR V/T ASSY YEL

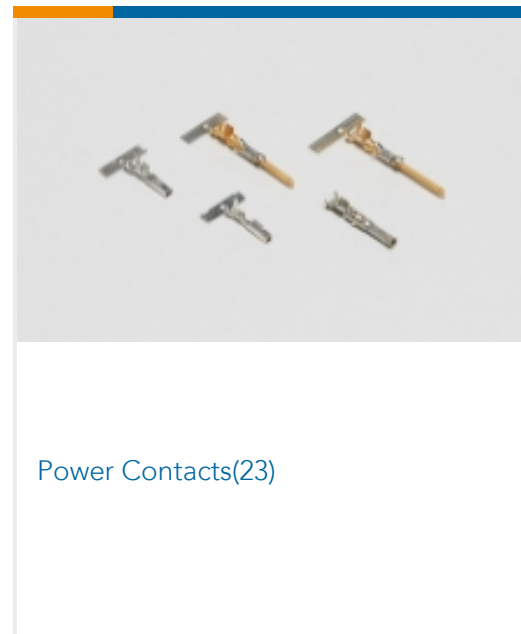
Also in the Series | Power Double Lock



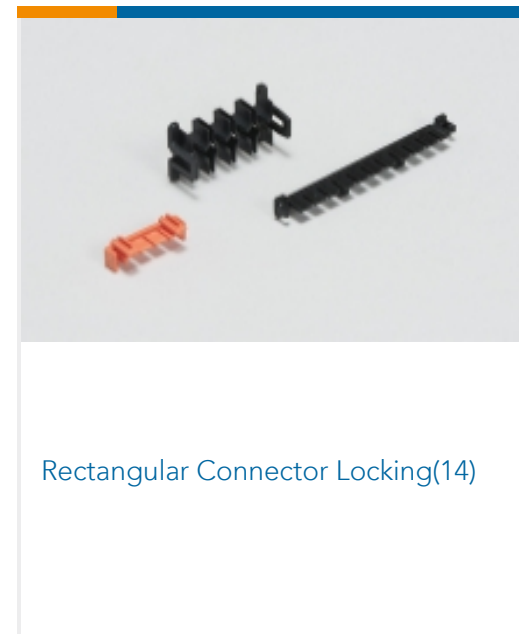
Connector Contacts(1)



Insertion & Extraction Tools(2)



Power Contacts(23)



Rectangular Connector Locking(14)



Rectangular Power Connectors(284)

Customers Also Bought



TE Part #177904-1
STD Temp Power Double Lock Plug



TE Part #2005247-1
PDL 2P PLUG 3.96(GWT) NAT



TE Part #177907-1
POWER DBL LOCK CAP P/M 3P



TE Part #179466-1
AMP POWER DBL LOCK CAP HSG 6P



TE Part #179463-1
POWER DBL LOCK CAP HSG F/H 2P



TE Part #1827387-1
GIC 3.3 PLUG HOUSING 8P



TE Part #1827395-1
GIC 3.3 REC CONTACT TIN PLATE



TE Part #521368-1
ULTRA-POD 250 ASSY REC 22-18
AWG BR



TE Part #63931-2
187 FASTON REC 22-18 AWG BR

Documents

CAD Files

Customer View Model

[ENG_CVM_CVM_177914-1_H.2d_dxf.zip](#)

English

3D PDF

3D

Customer View Model

[ENG_CVM_CVM_177914-1_H.3d_igs.zip](#)

English

Customer View Model

[ENG_CVM_CVM_177914-1_H.3d_stp.zip](#)

English

By downloading the CAD file I accept and agree to the [Terms and Conditions](#) of use.

Datasheets & Catalog Pages

[SOFT_SHELL_PIN_AND_SOCKET_CONNECTORS_CATALOG](#)

English

[1773458-5_POWER_DBL_LOCK_\(PDL\)_CONNECTORS](#)

English

Product Specifications

[Application Specification](#)

English

Product Environmental Compliance

[MD_177914-1_032020181239_dmtec](#)

English



[MD_177914-1_032020181239_dmtec](#)

English

Instruction Sheets

[Instruction Sheet \(non U.S.\)](#)

English

AMP POWER DOUBLELOCK CONNECTOR SERIES

English

Agency Approvals

[UL Report](#)

English