

ADS54RF63-ADX4 Single-channel, 12-bit, 2.2 GSPS Evaluation Module (EVM)

Contents

1	Introduction	2
2	Hardware Design	2
3	Software Interfaces	2
4	Installation of Software	2
5	Using ADCapture Lab	6
6	Hardware Interfaces	11
7	Performance	12
8	Bill of Material	13
9	Layout	19
10	Schematic	19

List of Figures

1	ADCapture Lab Main Window.....	6
2	Buttons Used for Connect and Capture.....	7
3	The Appearance and Functionality of the Start/Stop Button Changes During Continuous Capture	8
4	The Analysis and View Settings	9
5	The result of the Data Analysis is Displayed in the Analysis Window	10
6	The Plot Tools Appear When Placing the Mouse Over any of the Plot Windows	11

List of Tables

1	Bill of Materials.....	13
---	------------------------	----

1 Introduction

The ADX412 EVM is a high performance evaluation module which incorporates four time-interleaved AD Converters sampling a single analog input, fine-adjustable clock phases and a USB interface. The analog input is sampled with 12-bit resolution at a capture rate of 2.2 giga samples per second (GSPS).

2 Hardware Design

2.1 ADC Interface

The ADCs are clocked from an external 550MHz clock, this clock is phase shifted to 0, 90, 180 and 270 respectively for the four ADCs. The first ADC buffers the zero phase clock and drives an LVDS source synchronous clock, edge aligned to data, to the FPGA global clock input. From this clock the FPGA generates all four clock phases needed for data sampling using a PLL.

2.2 USB Interface

The FPGA is connected to a RS-232-over-USB chip. The signaling is done using LVTTTL (3.3V), and is synchronous to a 24MHz clock driven by the USB chip to the FPGA. The data rate is fixed at 3Mbit.

2.3 Control and Status Interface

On the PCB there are also four LEDs and six DIP switches available. The LEDs are active low using LVTTTL (3.3V). The DIP switches are also active low, but use the LVCMOS (2.5V) signaling.

3 Software Interfaces

For evaluation, both a standalone program (ADCaptureLab) and a MATLAB interface is supplied.

3.1 ADCaptureLab

See the section [Using ADCapture Lab](#) for instructions.

3.2 MATLAB Interface

```
Find devices:      instrusb('find')
Reset device:     instrusb('reset')
Collect data:     [a b c d] = instrusb('musb', 'FPGA', 'adx4', 4)
```

See the help file in .m-file for more information.

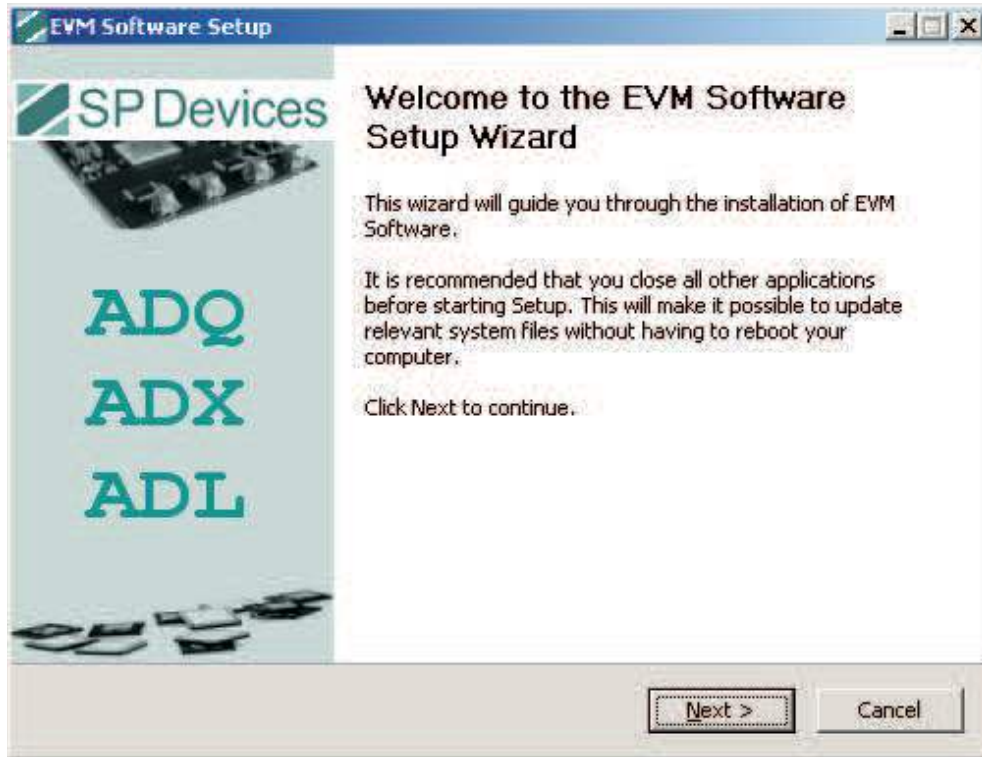
4 Installation of Software

4.1 ADCaptureLab Installation

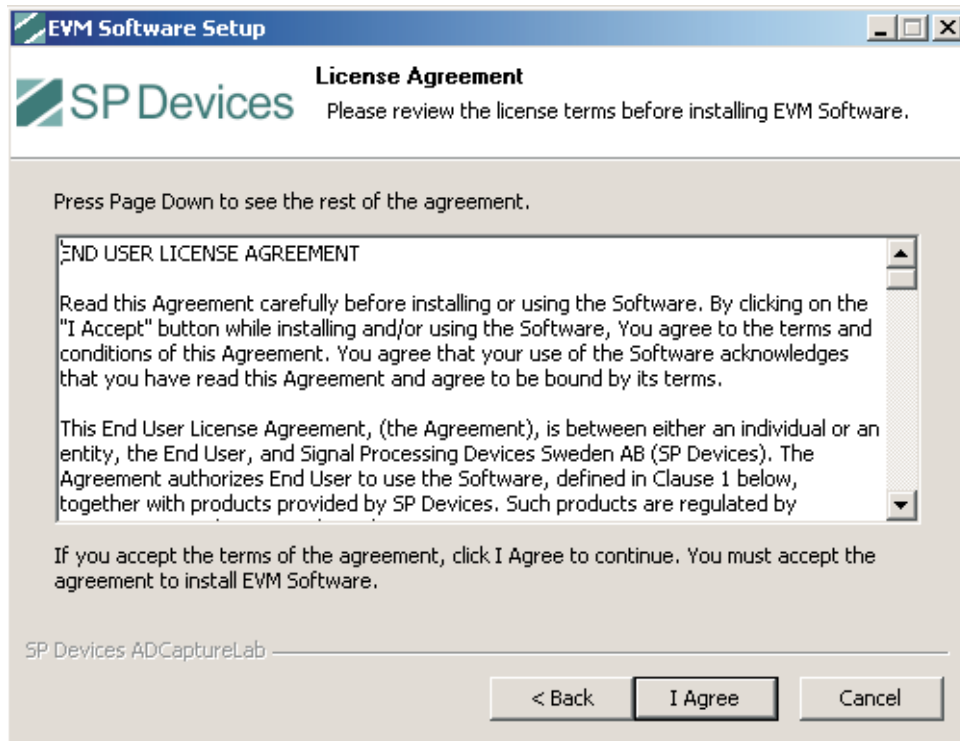
To install the software for the EVM board, run "EVM-setup.exe" found on the CD delivered with the board. This will cause all software to be installed and a shortcut to be added to the start menu. Currently, the software package is only available for use with Microsoft Windows.

IMPORTANT: Install the software before you connect the ADX-EVM to the USB Port.

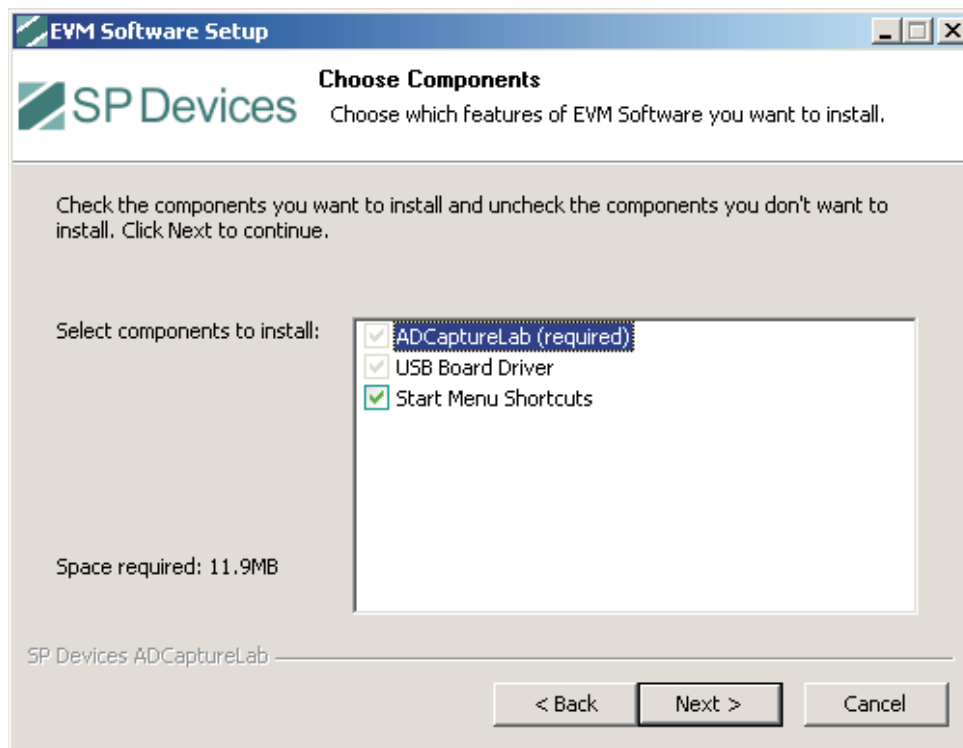
1. To install the software, run EVM-setup.exe which is included on the CD delivered with your card. The window ([Figure 1](#)) will be shown.



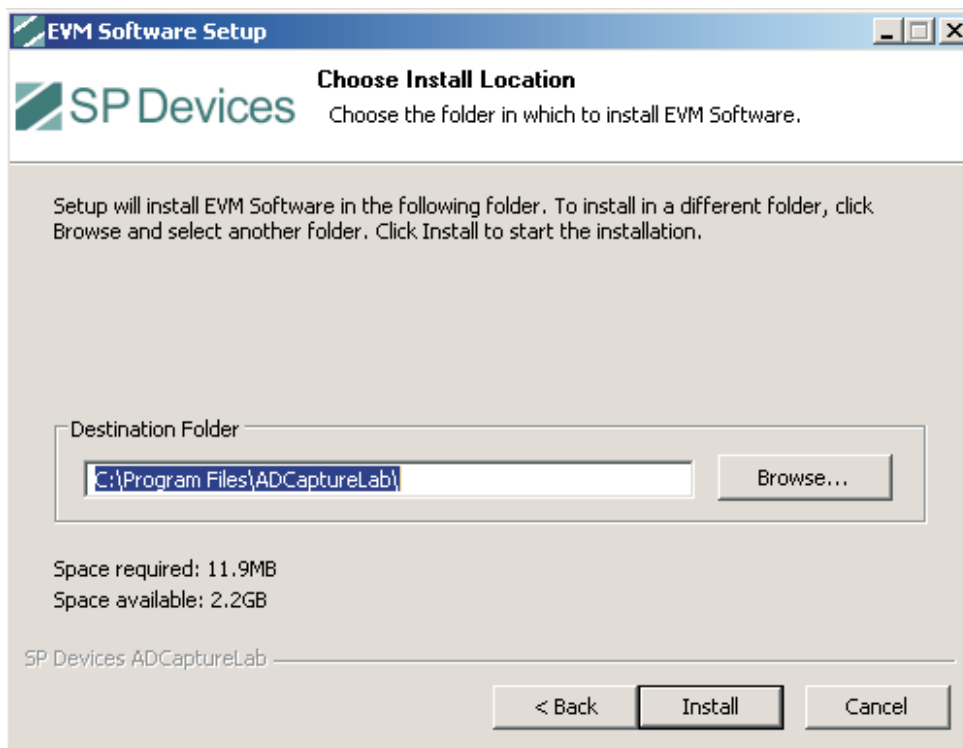
2. Press "Next >".



3. Read the license agreement, and then press "I Agree".



4. Choose the components to be installed and press "Next >".
SP Devices recommend installation of all suggested components.



- 5.

If the suggested default installation location is not satisfactory, press "Browse" to choose another location. Then press "Install".



6. When all components have been installed, the software is ready for use. Press "Finish" to complete the installation.

5 Using ADCapture Lab

5.1 Overview

Figure 1 shows the main window of ADCapture Lab. A detailed description of each part shown in the main window is given in the section shown in the figure.

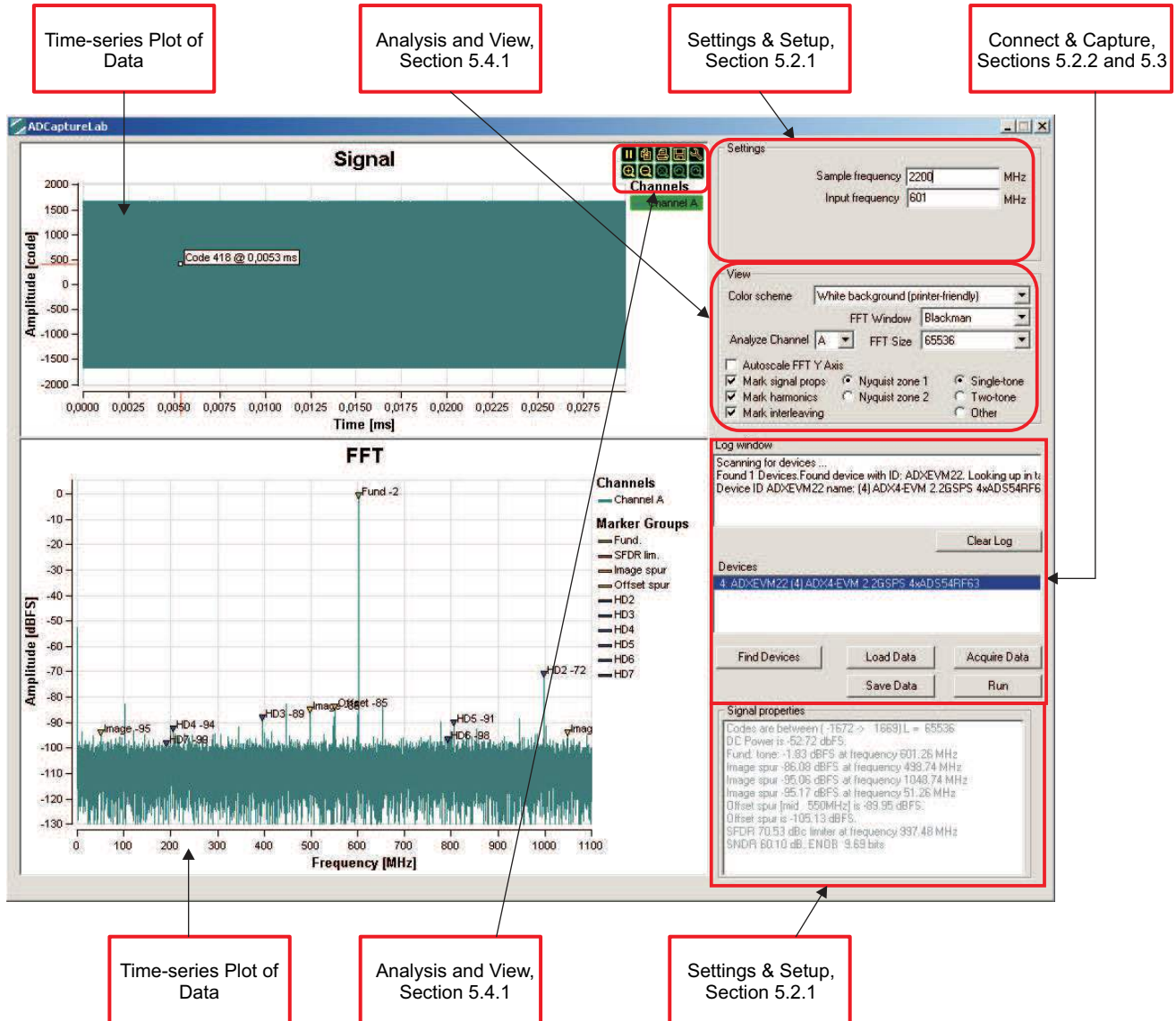


Figure 1. ADCapture Lab Main Window

5.2 Capturing Data

5.2.1 Settings and Setup

Setting	Description
Sample frequency	Set the sampling frequency for the system. Frequency axis for FFT plot will be based on this and on Nyquist zone settings (see section Nyquist Zone Settings).
Input frequency	Set the input frequency. Only used for tagging when exporting data.

5.2.2 Connect and Capture

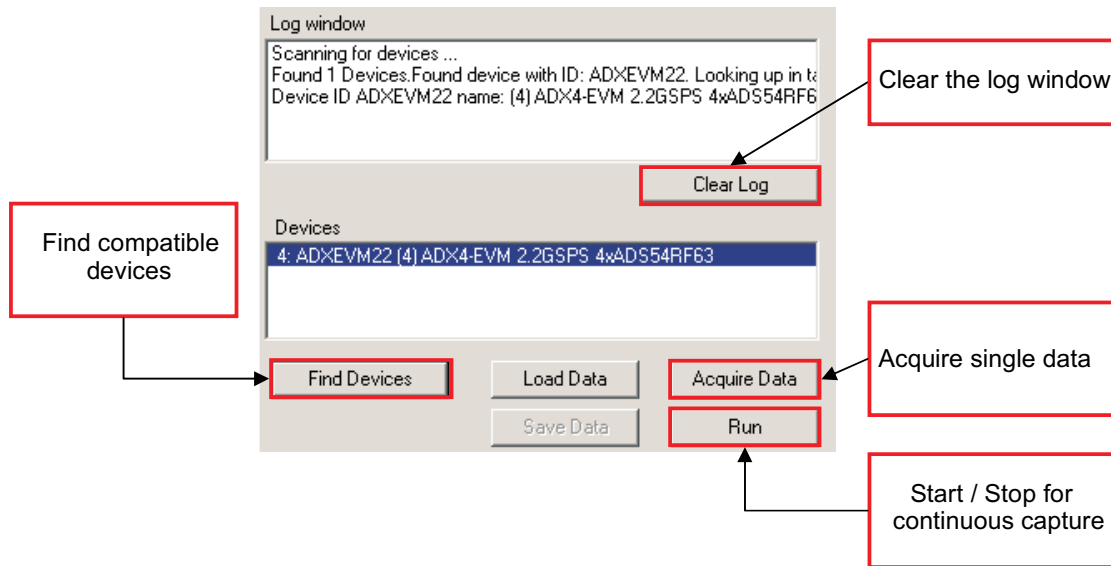


Figure 2. Buttons Used for Connect and Capture

5.2.2.1 Connecting to the Board

1. To find the board – press the button "Find USB Devices". The boards connected to the computer will then show up in the "Devices" box. Status information on the enumeration of devices will show in "Log window".
2. Select a compatible device board from the "Devices" list. The buttons "Acquire Data" and "Run" will then be activated.

5.2.2.2 Capture Single Batch

To capture a single batch from the board, press "Acquire Data".

5.2.2.3 Continuous Capture

To capture continuously, press "Run". Button will change name to "Stop", and pressing it will stop the capturing. If plots are in "Play" mode (see section [Plot Tools](#)), plots will be updated continuously as new data arrives from the board.

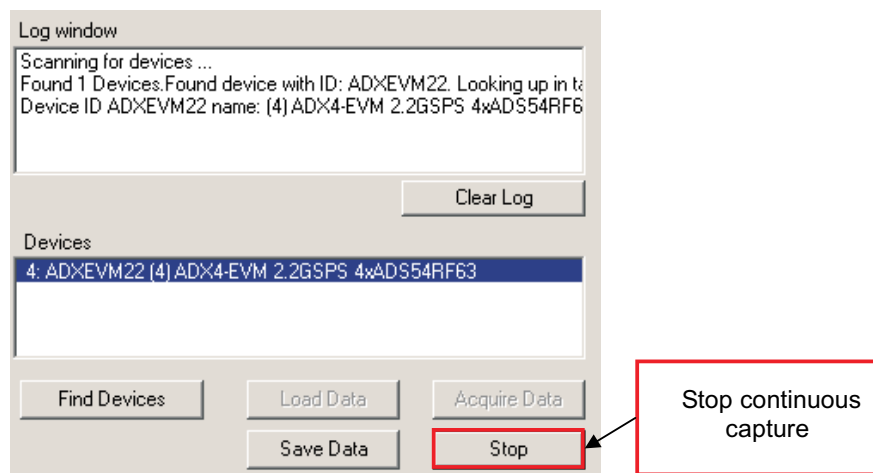


Figure 3. The Appearance and Functionality of the Start/Stop Button Changes During Continuous Capture

5.3 Import and Export of Data

5.3.1 Import Data

Press "Import Data" to load previously saved results into ADCapture Lab. In the file dialog window that opens, select the target file and press "Open". File contents will be loaded into the plot windows (unless they are in "Pause" mode). To import, the user can also drag and drop the file to the ADCapture Lab main window directly.

5.3.2 Export data

To save the results of a measurement, press "Save Data". Provide a filename in the file dialog window that opens, select a file format and press "Save". Data can be exported as a text file format with a header, binary format, or as a pure ASCII file for use with for example MATLAB.

5.4 Data Analysis

ADCapture Lab supports several data analysis functions that help interpret and evaluate the results of the measurements. The following sections explain the details about these functions.

5.4.1 Analysis and View Settings

The analysis and view settings determine which type of data analysis that is performed and how the result is displayed.

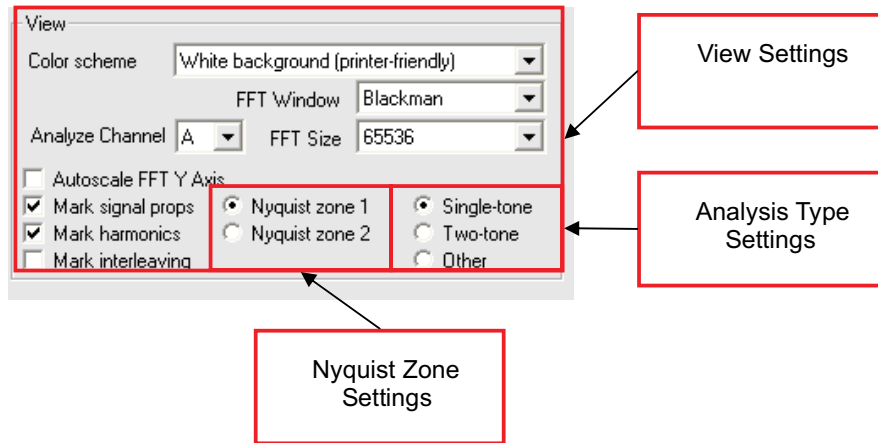


Figure 4. The Analysis and View Settings

5.4.1.1 Analysis Type Settings

Analysis Type	Description
Single-tone	Check this to indicate that the current measurement is a single-tone test. Supports analysis of code range, fundamental, harmonics, SFDR, and SNDR (ENOB).
Two-tone	Check this to indicate that the current measurement is a two-tone test. Supports analysis of code range, fundamentals, SFDR and SNDR (ENOB).
Other	Check this to indicate that the current measurement is other than above mentioned test types. Supports analysis of code range only.

5.4.1.2 Nyquist Zone Settings

Nyquist Zone	Description
Nyquist zone 1	Check this to indicate that the input signal frequencies are in the first Nyquist zone, i.e., $DC < f_{in} < f_s/2$. Frequency axis of FFT plot will be based on this and on the current sample frequency setting.
Nyquist zone 2	See description above. FFT plot frequency axis will change to $f_s/2 < f_{in} < f_s$.

5.4.1.3 View Settings

Setting	Description
Color scheme	Sets the color scheme of the plot routines. Available modes are <ul style="list-style-type: none"> • White background (printer-friendly) • Black background • Grey background
Window	Windowing function used for FFT and analysis functions. Available windows are: <ul style="list-style-type: none"> • Blackman • Blackman-Harris • Hamming • Hanning • Rectangular
Autoscale FFT Y Axis	When enabled, the y-axis of the FFT plot is automatically scaled. If disabled, the y-axis is locked between 0 and -130dBFS.
Mark signal props	When enabled, fundamental tone(s) and SFDR limiter are marked in the FFT plot.
Mark harmonics	When enabled, harmonics (2nd-6th) are marked in the FFT plot. Supported for single-tone tests only.
Mark interleaving	When enabled, interleaving errors are marked in the FFT plot. Supported for single-tone tests and two-tone tests only.

5.4.2 Analysis Window Output

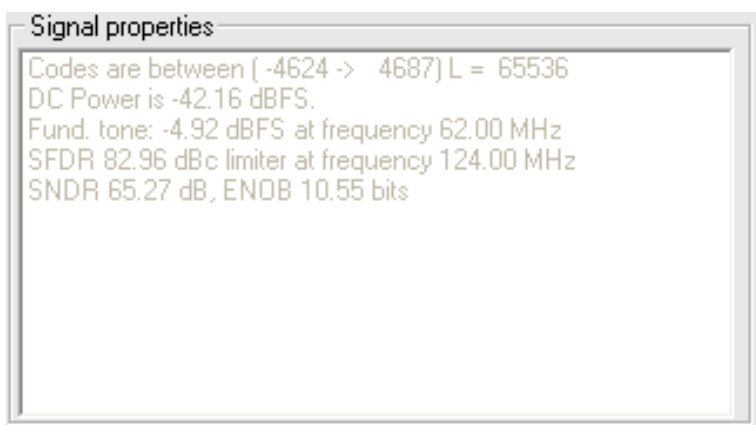


Figure 5. The result of the Data Analysis is Displayed in the Analysis Window

Analysis	Item Applicable to Analysis Type(s)	Description
Codes	All	Code range and number of samples in the current data batch.
DC Power	All	DC power in dBFS.
Fund. tone(s)	Single-tone Two-tone	Identified fundamental tones (power and frequency).
Power max	Other	Identified power maximum (power and frequency).
SFDR	Single-tone Two-tone	Spurious-Free Dynamic Range. Power relation between fundamental tone and largest distortion. For a two-tone test this is calculated as the relation between the largest fundamental tone and the largest distortion. Frequency position of limiting component is calculated.
SFDR	Single-tone Two-tone	Signal to Noise and Distortion Ratio. Power relation between fundamental tone and noise and distortion.
ENOB	Single-tone Two-tone	Effective Number Of Bits. Based directly on the SNDR value.

5.5 Plot Tools

Move the mouse cursor over any of the plot windows (time-series plot or FFT plot) to display the plot tools toolbar. When a plot tool is marked green, as for example the "Zoom to Fit" tool shown in Figure 6, it means that this specific tool is currently not a valid choice. In the case of the "Zoom to Fit" tool, this happens when the plot is already zoomed to show the full signal plot.

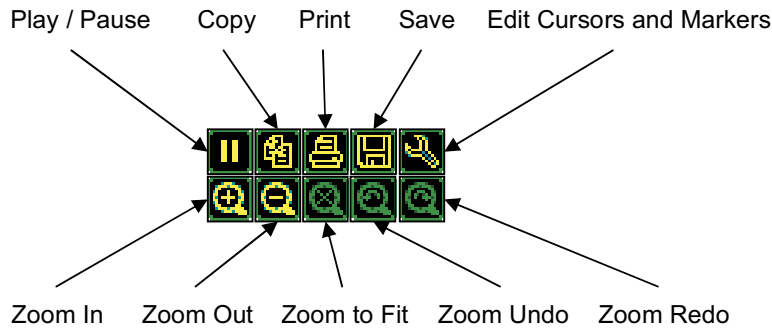


Figure 6. The Plot Tools Appear When Placing the Mouse Over any of the Plot Windows

Plot Tool	Description
Play/Pause	To put plot in Play/Pause mode. In play mode, plot will display new data as it arrives either by acquiring or by import from file. In pause mode, plot will not update.
Copy	Copies plot window to the clipboard. The result can for example be pasted into a document or similar.
Print	Prints plot window to printer.
Save	Exports plot window to bitmap or jpeg image file.
Edit Cursors and Markers	Edits the cursors and markers of the plot window. When pressed a dialog window will open which will allow for changing properties such as channel name and visibility, display color for the channel and marker shapes and colors.
Zoom In	Zooms in
Zooms Out	Zoom out
Zoom to Fit	Zooms to the original setting.
Zoom Undoit	Returns to previous zoom setting.
Zoom Redo	Returns to zoom setting before undo press.

6 Hardware Interfaces

6.1 DIP Switches

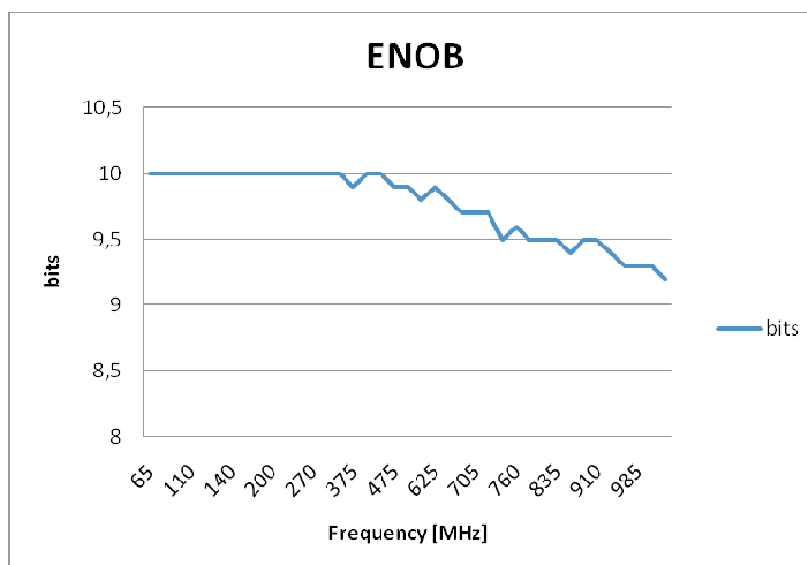
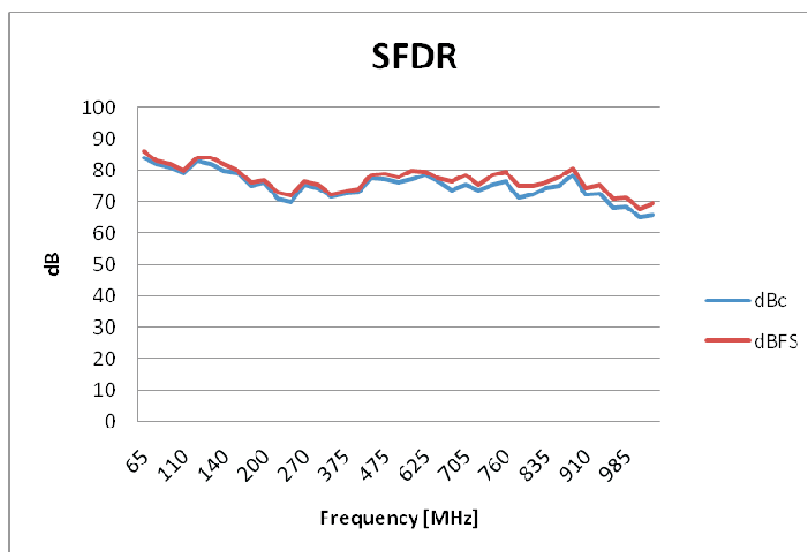
- 1 Reserved. Set to "Off".
- 2 Reserved. Set to "Off".
- 3 Reserved. Set to "Off".
- 4 Reserved. Set to "Off".
- 5 Store ADX IP data in data logger. "Off" selects ADC data.
- 6 ADC powerdown (unused)

6.2 LEDs

- 0 Toggle when estimation done. Red.
- 1 Estimation enabled. Red.
- 2 Licence ok, will blink on license failure. Green.
- 3 Transmitting data logger data over USB interface. Green.

7 Performance

The performance of the EVM is limited at all measurements by the harmonic distortion of the ADCs (HD2 or HD3). Below are plots of the typical performance of the ADX4-EVM.



8 Bill of Material

Table 1. Bill of Materials

QTY	Description	Package	Manufacturer	Manufacturer PN	Supplier	Supplier PN	Regulatory	Status	Designators
8	Resistor, 0 ohm, 0402, 1%, 0.063W	0402	VISHAY DALE	CRCW04020000Z0ED			RoHS	QUL	R13, R16, R45, R46, R81, R99, R138, R139
4	Resistor, 1 ohm, 0402, 1%, 0.063W	0402	VISHAY DALE	CRCW04021R00FNED	Farnell	1469668	RoHS	QUL	R7, R8, R29, R71
9	Resistor, 10 ohm, 0402, 1%, 0.063W	0402	VISHAY DALE	CRCW040210R0FKED			RoHS	QUL	R26, R27, R28, R30, R31, R36, R37, R38, R88
2	Resistor, 22 ohm, 0402, 1%, 0.063W	0402	VISHAY DALE	CRCW040222R0FKED			RoHS	QUL	R118, R119
6	Resistor, 33 ohm, 0402, 1%, 0.063W	0402	VISHAY DALE	CRCW040233R0FKED			RoHS	QUL	R107, R108, R109, R115, R116, R117
12	Resistor, 51 ohm, 0402, 1%, 0.063W	0402	VISHAY DALE	CRCW040251R0FKED			RoHS	QUL	R80, R93, R95, R122, R123, R124, R125, R126, R127, R128, R129, R136
4	Resistor, 240 ohm, 0402, 1%, 0.063W	0402	VISHAY DALE	CRCW0402240RFKED			RoHS	QUL	R19, R20, R25, R43
2	Resistor, 330 ohm, 0402, 1%, 0.063W	0402	Yageo	RC0402FR-07330RL			RoHS	QUL	R87, R89
2	Resistor, 390 ohm, 0402, 1%, 0.063W	0402	VISHAY DALE	CRCW0402390RFKED			RoHS	QUL	R5, R6
1	Resistor, 470 ohm, 0402, 1%, 0.063W	0402	Yageo	RC0402FR-07470RL			RoHS	QUL	R76
1	Resistor, 680 ohm, 0402, 1%, 0.063W	0402	Yageo	RC0402FR-07680RL			RoHS	QUL	R75
3	Resistor, 1 kohm, 0402, 1%, 0.063W	0402	Yageo	RC0402FR-071KL			RoHS	QUL	R92, R104, R111
1	Resistor, 1.2 kohm, 0402, 1%, 0.063W	0402	Yageo	RC0402FR-071K2L			RoHS	QUL	R94
1	Resistor, 3.3 kohm, 0402, 1%, 0.063W	0402	Yageo	RC0402FR-073K3L			RoHS	QUL	R77
18	Resistor, 4.7 kohm, 0402, 1%, 0.063W	0402	VISHAY DALE	CRCW04024K70FKED			RoHS	QUL	R72, R84, R85, R86, R90, R97, R100, R101, R102, R105, R110, R121, R130, R131, R132, R133, R134, R135
2	Resistor, 6.8 kohm, 0402, 1%, 0.063W	0402	Yageo	RC0402FR-076K8L			RoHS	QUL	R3, R4

Table 1. Bill of Materials (continued)

QTY	Description	Package	Manufacturer	Manufacturer PN	Supplier	Supplier PN	Regulatory	Status	Designators
19	Resistor, 10 kohm, 0402, 1%, 0.063W	0402	Yageo	RC0402FR-0710KL			RoHS	QUL	R1, R2, R55, R56, R57, R59, R60, R62, R63, R65, R66, R67, R68, R70, R98, R112, R113, R114, R120
1	Resistor, 15 kohm, 0402, 1%, 0.063W	0402	Yageo	RC0402FR-0715KL			RoHS	QUL	R103
1	Resistor, 18 kohm, 0402, 1%, 0.063W	0402	VISHAY DALE	CRCW040218K0FKED			RoHS	QUL	R141
4	Resistor, 22 kohm, 0402, 1%, 0.063W	0402	Yageo	RC0402FR-0722KL			RoHS	QUL	R58, R61, R64, R69
1	Resistor, 33 kohm, 0402, 1%, 0.063W	0402	Yageo	RC0402FR-0733KL			RoHS	QUL	R106
1	Resistor, 47 kohm, 0402, 1%, 0.063W	0402	Yageo	RC0402FR-0747KL			RoHS	QUL	R74
25	Resistor, 100 kohm, 0402, 1%, 0.063W	0402	Yageo	RC0402FR-07100KL			RoHS	QUL	R9, R10, R11, R12, R14, R15, R17, R18, R21, R22, R23, R24, R32, R33, R34, R35, R41, R42, R48, R49, R50, R51, R52, R53, R142
0	Resistor, 150 kohm, 0402, 1%, 0.063W	0402	Yageo	RC0402FR-07150KL			RoHS	QUL	
1	Resistor, 330 kohm, 0402, 1%, 0.063W	0402	VISHAY DALE	CRCW0402330KFKED			RoHS	QUL	R73
0	Resistor, 1 Mohm, 0402, 1%, 0.063W	0402	Yageo	RC0402FR-071ML			RoHS	QUL	
4	Resistor, 82 ohm, 0603, 1%, 0.1W	0603	Yageo	RC0603FR-0782RL			RoHS	QUL	R78, R79, R82, R83
1	Resistor, 100 ohm, 0603, 1%, 0.1W	0603	Yageo	RC0603FR-07100RL			RoHS	QUL	R96
1	NTC thermistor, 100k	0603	Mitsubishi	TN10-3R104JT	Panasonic	ERT-J1VS104JA	RoHS	QUL	R54
16	Capacitor, 4.7 pF +/-0.25pF, 0402, C0G, 50V	0402	TDK	C1005C0G1H4R7B			RoHS	QUL	C9, C10, C20, C21, C22, C23, C28, C29, C30, C31, C35, C36, C37, C38, C41, C42
1	Capacitor, 10 pF, 5%, 0402, C0G, 50V	0402	Murata	GRM1555C1H100JZ01D			RoHS	QUL	C67
4	Capacitor, 100 pF, 5%, 0402, C0G, 50V	0402	Murata	GRM1555C1H101JZ01D			RoHS	QUL	C95, C96, C97, C98

Table 1. Bill of Materials (continued)

QTY	Description	Package	Manufacturer	Manufacturer PN	Supplier	Supplier PN	Regulatory	Status	Designators
164	Capacitor, 100 nF, 10%, 0402, X7R, 16V	0402	TDK	C1005X7R1C104K			RoHS	QUL	C1, C7, C11, C14, C15, C16, C17, C18, C19, C25, C26, C33, C34, C39, C40, C43, C44, C45, C48, C49, C50, C52, C53, C54, C56, C57, C58, C59, C74, C82, C83, C84, C90, C91, C92, C99, C100, C101, C104, C105, C106, C107, C108, C109, C110, C111, C112, C113, C114, C115, C116, C117, C118, C119, C120, C121, C122, C123, C124, C125, C126, C127, C128, C129, C130, C131, C132, C133, C134, C135, C136, C137, C138, C139, C140, C141, C142, C143, C144, C145, C146, C147, C148, C149, C150, C151, C152, C153, C154, C155, C156, C157, C158, C159, C160, C161, C162, C163, C164, C165, C166, C167, C168, C169, C170, C171, C172, C173, C174, C175, C176, C177, C178, C179, C180, C181, C182, C183, C184, C185, C186, C187, C188, C189, C190, C191, C192, C193, C194, C195, C196, C197, C198, C199, C200, C201, C202, C203, C204, C205, C206, C207, C208, C209, C210, C211, C212, C213, C214, C215, C216, C217, C218, C219, C220, C221, C222, C223, C224, C225, C226, C227, C228, C229
2	Capacitor, 100 nF, 10%, 0603, X5R, 50V	0603	Kemet	C0603C104K5RACTU	Elfa	65-202-09	RoHS	QUL	C102, C103
6	Capacitor, 1 uF, 10%, 0603, X5R, 25V	0603	Murata	GRM188R61E105KA12 D	Elfa	65-202-17	RoHS	QUL	C12, C13, C32, C87, C89, C94
6	Capacitor, 2.2 uF, 10%, 0603, X5R, 16V	0603	Murata	GRM188R61C225KE15 D	Elfa	65-202-25	RoHS	QUL	C2, C3, C4, C5, C6, C8

Table 1. Bill of Materials (continued)

QTY	Description	Package	Manufacturer	Manufacturer PN	Supplier	Supplier PN	Regulatory	Status	Designators
8	Capacitor, 10 uF, 10%, 0805, X5R, 16V	0805	Johanson Dielectrics Inc	160R15X106KV4E	Elfa	65-502-89	RoHS	QUL	C24, C46, C51, C55, C60, C63, C65, C230
12	Capacitor, 47 uF, 20%, 1210, X5R, 10V	1210	Taiyo Yuden	LMK325BJ476MM-T	Farnell	1463411	RoHS	QUL	C61, C64, C66, C69, C70, C75, C76, C77, C78, C79, C80, C85
5	Capacitor, 10 uF, 20%, 1210, X5R, 25V	1210	Taiyo Yuden	TMK325 BJ106MM-T	Farnell	1611923	RoHS	QUL	C71, C81, C88, C231, C232
5	Electrolytic capacitor, 100 uF, 0.39 ohm, 20%, 16V, C6, 105deg, CE-KX	C6	Sanyo	16CE100KX	Elfa	67-226-72	RoHS	QUL	C27, C47, C68, C72, C73
2	Electrolytic capacitor, 330 uF, 0.15 ohm, 20%, 25V, E10, 105deg, CE-KX	E10	Sanyo	25CE330KX	Elfa	67-227-30	RoHS	QUL	C86, C93
1	Electrolytic capacitor, 10 uF, 1.8 ohm, 20%, 25V, 105deg, CE-AX	A6	Sanyo	25CE10AX	Panasonic	EEE-FP1E100AR	RoHS	QUL	C62
5	Ferrite bead, 0603, 600 ohm, RDC=0.45 ohm, 200 mA	0603	Würth	74279265	Würth	74279265	RoHS	QUL	L1, L2, L6, L7, L15
5	Ferrite bead, 0805, 120 ohm@100MHz, RDC=0.03 ohm, 3 A	0805	Würth	742792023	Würth	742792023	RoHS	QUL	L14, L32, L33, L35, L37
16	Inductor, 2.7nH, 5%, 0.056ohm, 1500mA, 13GHz SRF	0402	Coilcraft	0402HP-2N7XJL	Coilcraft	0402HP-2N7XJL	RoHS	QUL	L3, L5, L8, L9, L12, L13, L16, L17, L20, L21, L23, L24, L27, L28, L29, L31
8	Inductor, 5.6nH, 5%, 0.048ohm, 1600mA, 6.5GHz SRF	0402	Coilcraft	0402HP-5N6XJL	Coilcraft	0402HP-5N6XJL	RoHS	QUL	L4, L10, L11, L18, L19, L25, L26, L30
2	SMT power inductor, 10uH, 10%, 0.434ohm, 1.1A (30% drop), 39.9MHz	SMD2.5x3	Coilcraft	ME3220-103KL	Coilcraft	ME3220-103KL	RoHS	QUL	L36, L39
5	SMT power inductor, 3.3uH, 20%, 0.138ohm, 1.7A (30% drop), 75.6MHz	SMD2.5x3	Coilcraft	ME3220-332ML	Coilcraft	ME3220-332ML	RoHS	QUL	L22, L34, L38, L40, L41
1	ACM7060-701-2PL, 4A Common mode power filter	SMD6x7	TDKs	ACM7060-701-2PL	Farnell	1503724	RoHS	QUL	TR3
2	MABA-007159, 4.5 - 3000 MHz, 1:1 transmission line transformer	SM-22	Tyco/Macom	MABA-007159-000000	Richardson		RoHS	QUL	TR1, TR2
1	50WQ03FN, 5A 30V schottky diode	DPAK		50WQ03FN	Elfa	70-238-07	RoHS	QUL	D23

Table 1. Bill of Materials (continued)

QTY	Description	Package	Manufacturer	Manufacturer PN	Supplier	Supplier PN	Regulatory	Status	Designators
16	BB184, UHF low-voltage varactor, 2-14 pF, max 10V	SC79	NXP	BB184	Mouser	771-BB184-T/R	RoHS	QUL	D1, D2, D3, D4, D5, D6, D7, D8, D9, D10, D11, D12, D13, D14, D15, D16
2	BAV99W, dual diode, common anode/cathode, 0.15A, 85V	SOT323	NXP	BAV99W	Elfa	70-300-83	RoHS	QUL	D24, D25
1	BC847W, NPN transistor, 0.2A, 0.2W, 45V, hFE=110-800	SOT323			Elfa	71-304-04	RoHS	QUL	Q2
3	MMBT3904WT, NPN transistor, 0.2A, 0.15W, 40V, hFE=40-300	SOT323	ON Semiconductor	MMBT3904WT1G	Farnell	1459102	RoHS	QUL	Q1, Q5, Q6
2	BC817-25, NPN transistor, 0.5A, 0.25W, 45V, hFE=160-400	SOT23			Farnell	9558608	RoHS	QUL	Q3, Q4
4	Green LED, 16mcd, 0603	0603	Everlight	EL19-21SYGC	Elfa	75-312-47	RoHS	QUL	D19, D20, D21, D22
2	Red LED, 19mcd, 0603	0603	Everlight	EL19-21SDRC	Elfa	75-308-01	RoHS	QUL	D17, D18
1	XC5VSX50T-3FFG665C, Virtex 5 FPGA	BGA FF665	Xilinx	XC5VSX50T-3FFG665C			RoHS	QUL	U20
1	AT45DB321D, 32 Mbit FPGA config memory	SO8W	Atmel	AT45DB321D-SU	Farnell	1455042	RoHS	QUL	U29
1	DS2432, 1-kbit protected 1-wire EEPROM with SHA-1 engine	TSOC8	Maxim	DS2432			RoHS	QUL	U33
2	PTH08080W, 2.2A DC/DC module, 4.5-18V in, 0.9-5.5V out	SMD	Texas Instruments	PTH08080WAZ	Digikey	296-20433-ND	RoHS	QUL	U28, U34
4	REG104GA-3.3G4, 3.3V LDO, 1A max, 480mV drop	SOT223-6	Texas Instruments	REG104GA-3.3G4	Farnell	1207259	RoHS	QUL	U11, U14, U22, U23
1	LP2980-ADJ, adjustable LDO, 50 mA, max 16V in	SOT23-5	National Semiconductor	LP2980IM5-ADJ	Elfa	73-269-76	RoHS	QUL	U25
2	PTH08T231WAZ, 6A DC/DC module, 4.5-14V in, 0.7-5.5V out, cer cap	SMD	Texas Instruments	PTH08T231WAZ	Digikey	296-21589-ND	RoHS	QUL	U26, U31
2	TPS72301, 200mA negative LDO, -2.7--10V in, -1.2--9.5V out	SOT23-5	Texas Instruments	TPS72301DBVTG4	Farnell	1207336	RoHS	QUL	U1, U2
2	REG104GA-5G4, 5.0V LDO, 1A max, 580mV drop	SOT223-6	Texas Instruments	REG104GA-5G4	Farnell	1207261	RoHS	QUL	U4, U24
4	TLV2371, opamp, 2.7 - 16V, RRIO, 3 MHz, 6 mV offset	SOT23-5	Texas Instruments	TLV2371IDBVT	Farnell	8454990	RoHS	QUL	U13, U16, U18, U19

Table 1. Bill of Materials (continued)

QTY	Description	Package	Manufacturer	Manufacturer PN	Supplier	Supplier PN	Regulatory	Status	Designators
4	ADS54RF63, 12-bit 550 MSPS ADC	HTQFP80	Texas Instruments	ADS54RF63IPFP			RoHS	QUL	U3, U5, U8, U10
4	DAC7311, 12-bit serial DAC	SC70-6	Texas Instruments	DAC7311DCK	Farnell	1661399	RoHS	QUL	U12, U15, U17, U21
1	CFPS-32, 50 MHz crystal oscillator, 2.5V	SMD7x5	C-MAC	CFPS-32IB 50.0MHz	Farnell	1276663	RoHS	QUL	U30
3	ADCLK925 6 GHz 1->2 ECL clock fanout buffer	LFCSP16	Analog Devices	ADCLK925BCPZ	Digikey	ADCLK925B CPZ-R7CT- ND	RoHS	QUL	U6, U7, U9
1	FT232RQ, USB 1.1 serial port	QFN32	FTDI chip	FT232RQ	Farnell	1146033	RoHS	QUL	U37
2	TPS3809K33, 3.3V reset circuit, active low, 2.93 V trip point	SOT23-3	Texas Instruments	TPS3809K33DBV	Farnell	1287661	RoHS	QUL	U27, U32
1	LM95234, quad remote diode temp sensor	LLP14	National	LM95234CISD	Farnell	1554779	RoHS	QUL	U36
1	TC655, dual SMBus fan controller/temp sensor	MSOP10	Microchip	TC655EUN	Mouser	579- TC655EUN	RoHS	QUL	U35
0	Retention module for E5405A pinless 17ch diff connector for Agilent logic analyzers	SMD	Agilent	E5403A (kit of 5)			RoHS	QUL	
2	SMA side launch connector, 17.45 mm overall length	SMD/hand	Multicomp	19-70-TGG	Farnell	1342651	RoHS	QUL	J1, J2
1	USB type B mini, pth	PTH	Molex	56579-0519	Molex	56579-0519	RoHS	QUL	J7
1	Power connector 2.1 mm pin , hole mounted	PTH	Cliff Electronic Components	DC10A	Farnell	224959 (10 pcs)	RoHS	QUL	J6
1	Pin header, 2x7, 2.0 mm spacing, shrouded	PTH	Molex	87831-1420	Digikey	WM17469- ND	RoHS	QUL	P1
0	Pin header, 1x2, 2.0 mm spacing	PTH					RoHS	QUL	
2	Molex 22-27-2021, 2-pin 2.54 mm with friction lock	PTH	Molex	22-27-2021	Farnell	9731148	RoHS	QUL	P2, P4
1	SMD Pushbutton, SPST, 1.6 N	SMD	ALPS	SKHUALE010	Elfa	35-790-00	RoHS	QUL	SW1
1	DIP-switch, 6PST	SMD-DIP	Taiway	DM-06	Elfa	35-404-65	RoHS	QUL	SW2

9 Layout

The layout pages are appended to the end of this user's guide.

10 Schematic

The schematic pages are appended to the end of this user's guide.

Evaluation Board/Kit Important Notice

Texas Instruments (TI) provides the enclosed product(s) under the following conditions:

This evaluation board/kit is intended for use for **ENGINEERING DEVELOPMENT, DEMONSTRATION, OR EVALUATION PURPOSES ONLY** and is not considered by TI to be a finished end-product fit for general consumer use. Persons handling the product(s) must have electronics training and observe good engineering practice standards. As such, the goods being provided are not intended to be complete in terms of required design-, marketing-, and/or manufacturing-related protective considerations, including product safety and environmental measures typically found in end products that incorporate such semiconductor components or circuit boards. This evaluation board/kit does not fall within the scope of the European Union directives regarding electromagnetic compatibility, restricted substances (RoHS), recycling (WEEE), FCC, CE or UL, and therefore may not meet the technical requirements of these directives or other related directives.

Should this evaluation board/kit not meet the specifications indicated in the User's Guide, the board/kit may be returned within 30 days from the date of delivery for a full refund. **THE FOREGOING WARRANTY IS THE EXCLUSIVE WARRANTY MADE BY SELLER TO BUYER AND IS IN LIEU OF ALL OTHER WARRANTIES, EXPRESSED, IMPLIED, OR STATUTORY, INCLUDING ANY WARRANTY OF MERCHANTABILITY OR FITNESS FOR ANY PARTICULAR PURPOSE.**

The user assumes all responsibility and liability for proper and safe handling of the goods. Further, the user indemnifies TI from all claims arising from the handling or use of the goods. Due to the open construction of the product, it is the user's responsibility to take any and all appropriate precautions with regard to electrostatic discharge.

EXCEPT TO THE EXTENT OF THE INDEMNITY SET FORTH ABOVE, NEITHER PARTY SHALL BE LIABLE TO THE OTHER FOR ANY INDIRECT, SPECIAL, INCIDENTAL, OR CONSEQUENTIAL DAMAGES.

TI currently deals with a variety of customers for products, and therefore our arrangement with the user **is not exclusive.**

TI assumes **no liability for applications assistance, customer product design, software performance, or infringement of patents or services described herein.**

Please read the User's Guide and, specifically, the Warnings and Restrictions notice in the User's Guide prior to handling the product. This notice contains important safety information about temperatures and voltages. For additional information on TI's environmental and/or safety programs, please contact the TI application engineer or visit www.ti.com/esh.

No license is granted under any patent right or other intellectual property right of TI covering or relating to any machine, process, or combination in which such TI products or services might be or are used.

FCC Warning

This evaluation board/kit is intended for use for **ENGINEERING DEVELOPMENT, DEMONSTRATION, OR EVALUATION PURPOSES ONLY** and is not considered by TI to be a finished end-product fit for general consumer use. It generates, uses, and can radiate radio frequency energy and has not been tested for compliance with the limits of computing devices pursuant to part 15 of FCC rules, which are designed to provide reasonable protection against radio frequency interference. Operation of this equipment in other environments may cause interference with radio communications, in which case the user at his own expense will be required to take whatever measures may be required to correct this interference.

EVM Warnings and Restrictions

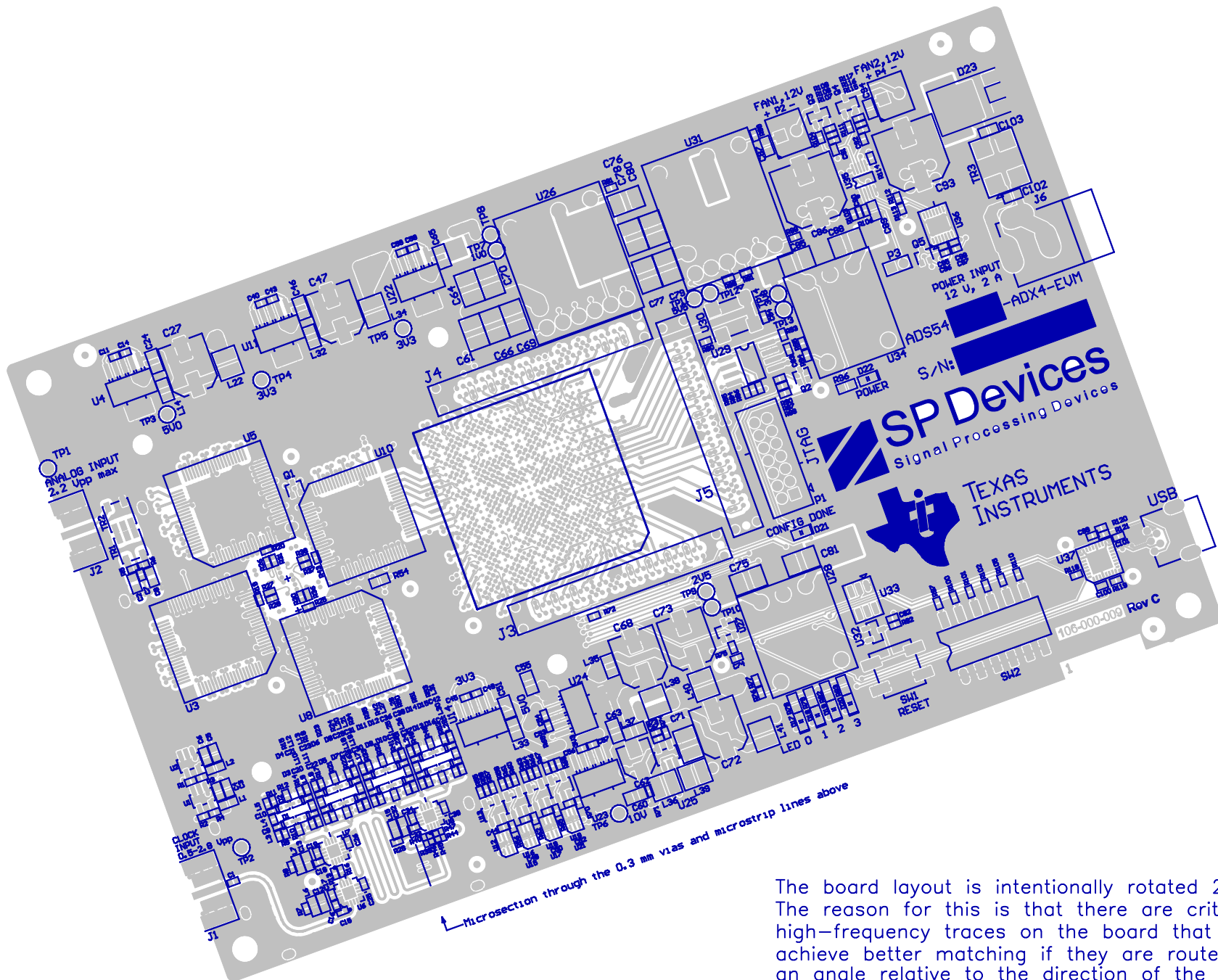
It is important to operate this EVM within the input voltage range of 11V to 14V and the output voltage range of -0.3V to 5.5V .

Exceeding the specified input range may cause unexpected operation and/or irreversible damage to the EVM. If there are questions concerning the input range, please contact a TI field representative prior to connecting the input power.

Applying loads outside of the specified output range may result in unintended operation and/or possible permanent damage to the EVM. Please consult the EVM User's Guide prior to connecting any load to the EVM output. If there is uncertainty as to the load specification, please contact a TI field representative.

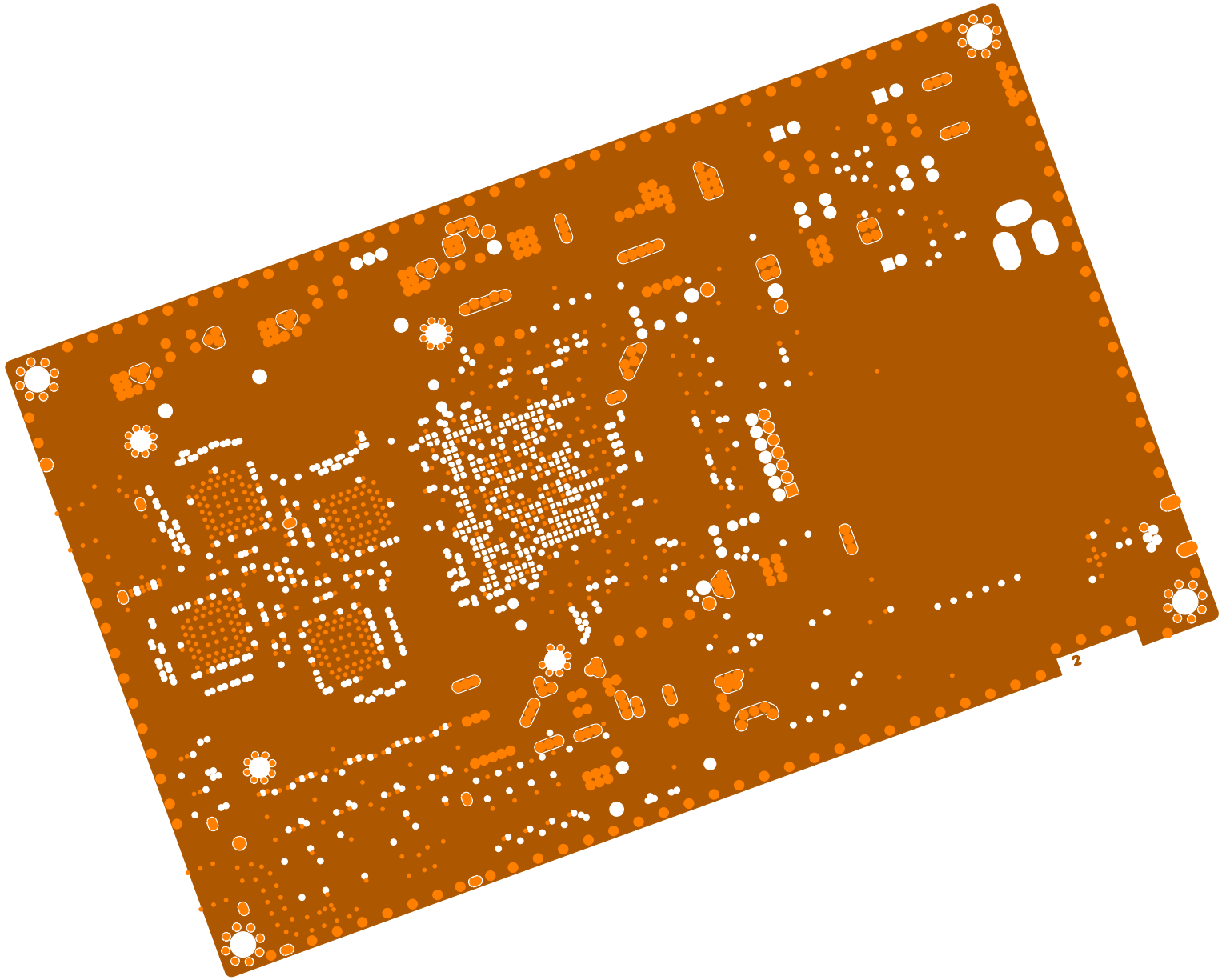
During normal operation, some circuit components may have case temperatures greater than 65°C. The EVM is designed to operate properly with certain components above 65°C as long as the input and output ranges are maintained. These components include but are not limited to linear regulators, switching transistors, pass transistors, and current sense resistors. These types of devices can be identified using the EVM schematic located in the EVM User's Guide. When placing measurement probes near these devices during operation, please be aware that these devices may be very warm to the touch.

Mailing Address: Texas Instruments, Post Office Box 655303, Dallas, Texas 75265
Copyright © 2009, Texas Instruments Incorporated

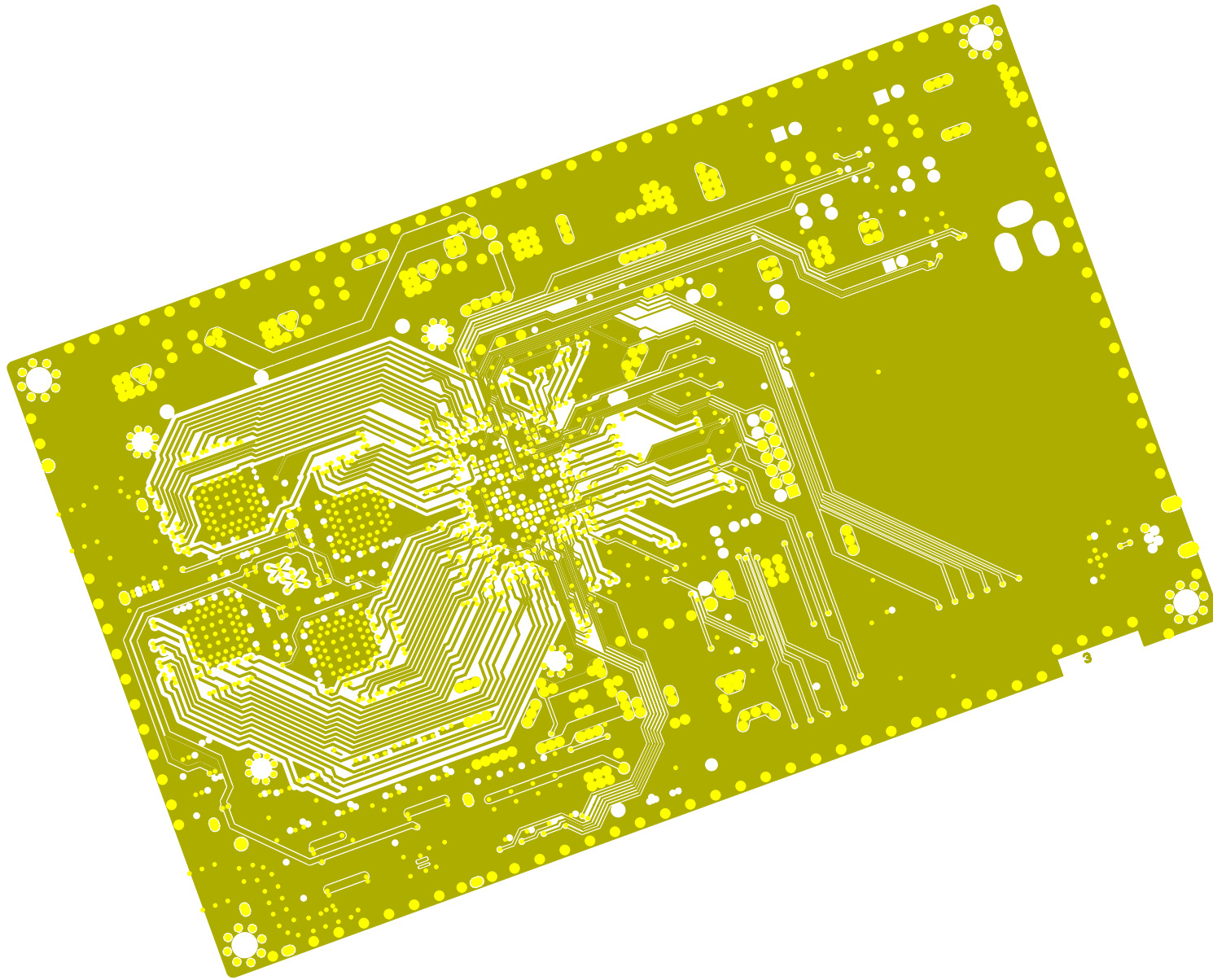


The board layout is intentionally rotated 20 degrees. The reason for this is that there are critical high-frequency traces on the board that will achieve better matching if they are routed at an angle relative to the direction of the glass fibers.

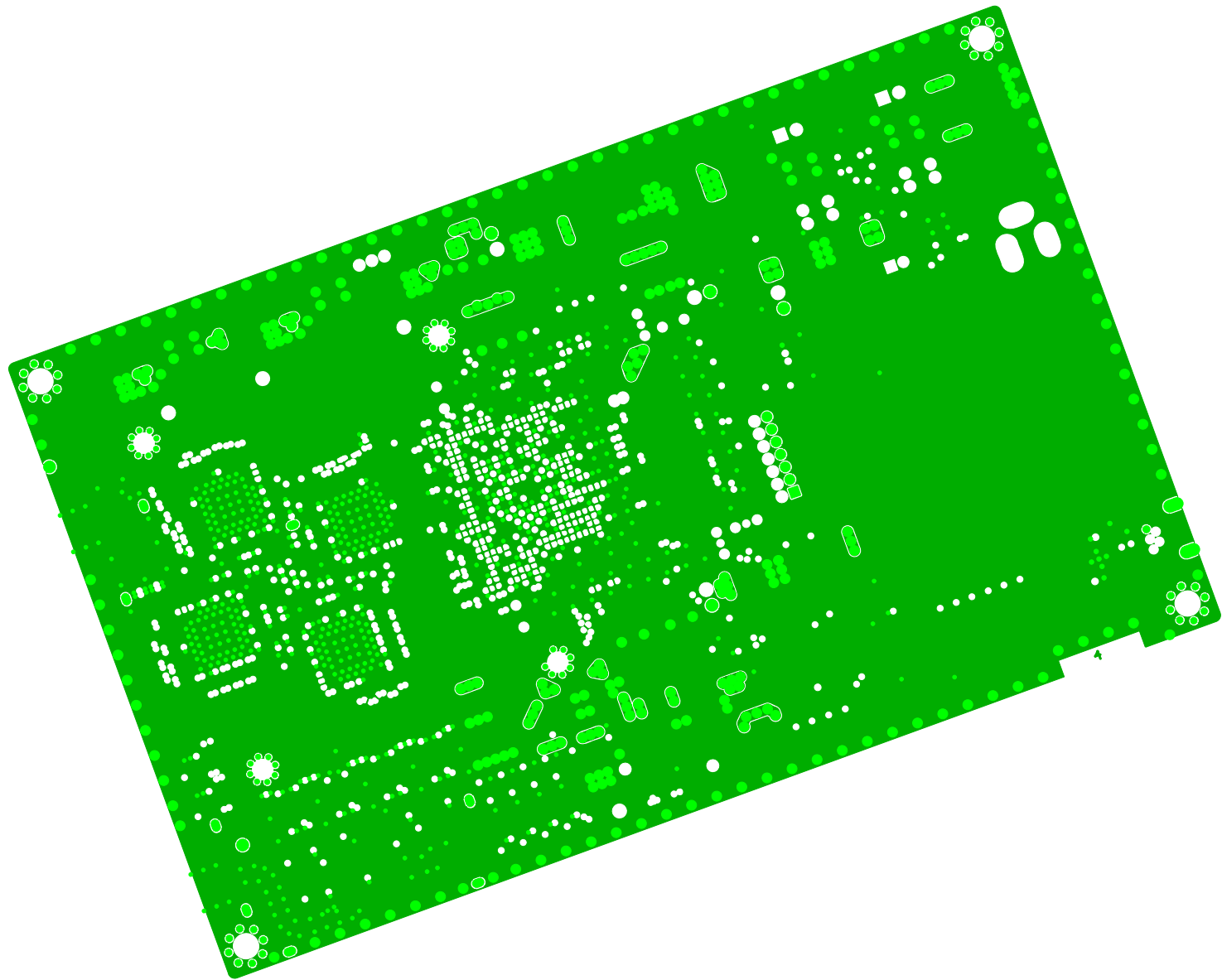
Please do not rotate the layout back. Let it stay in this angular position on the PCB panel.



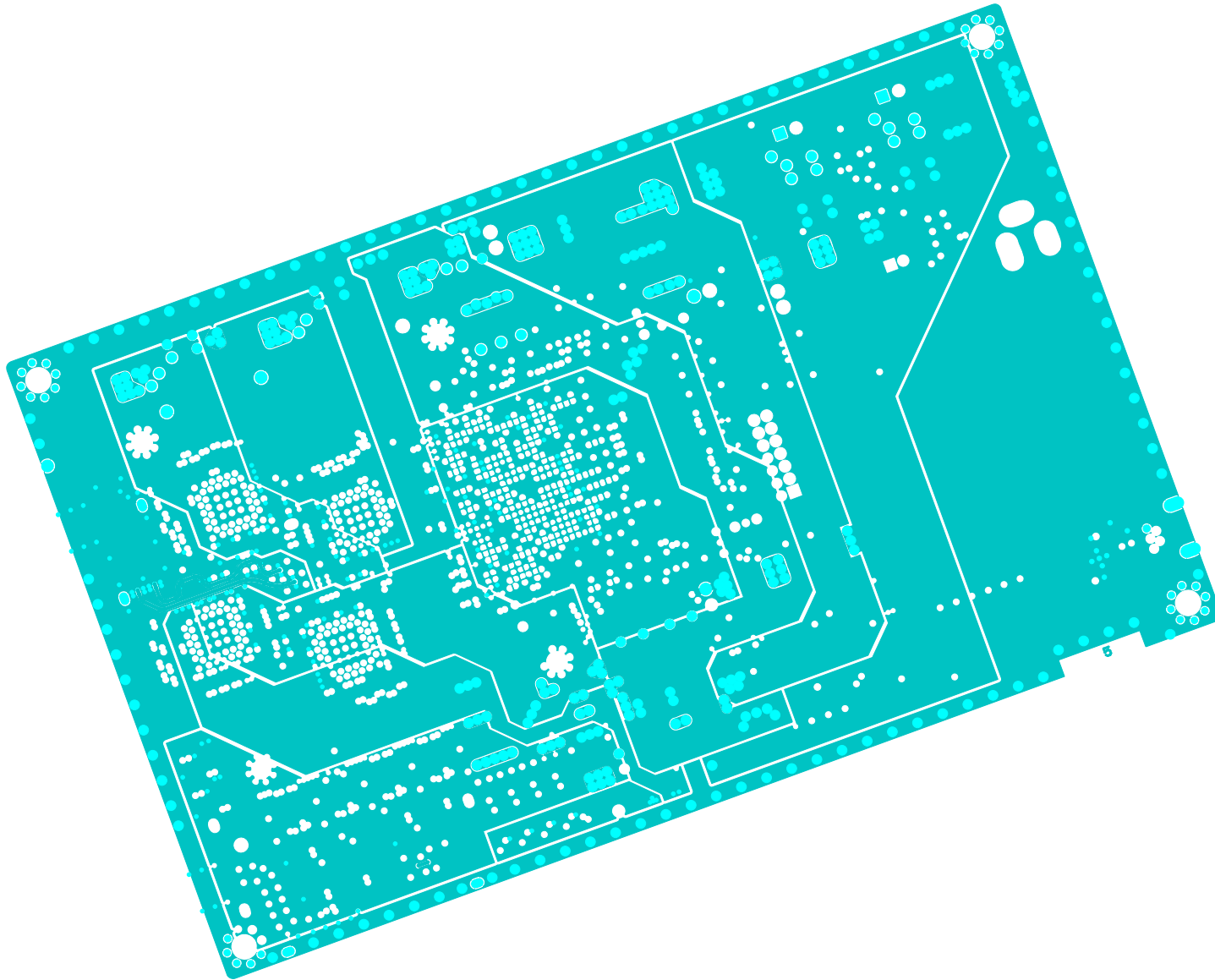
Layer2 (GND)



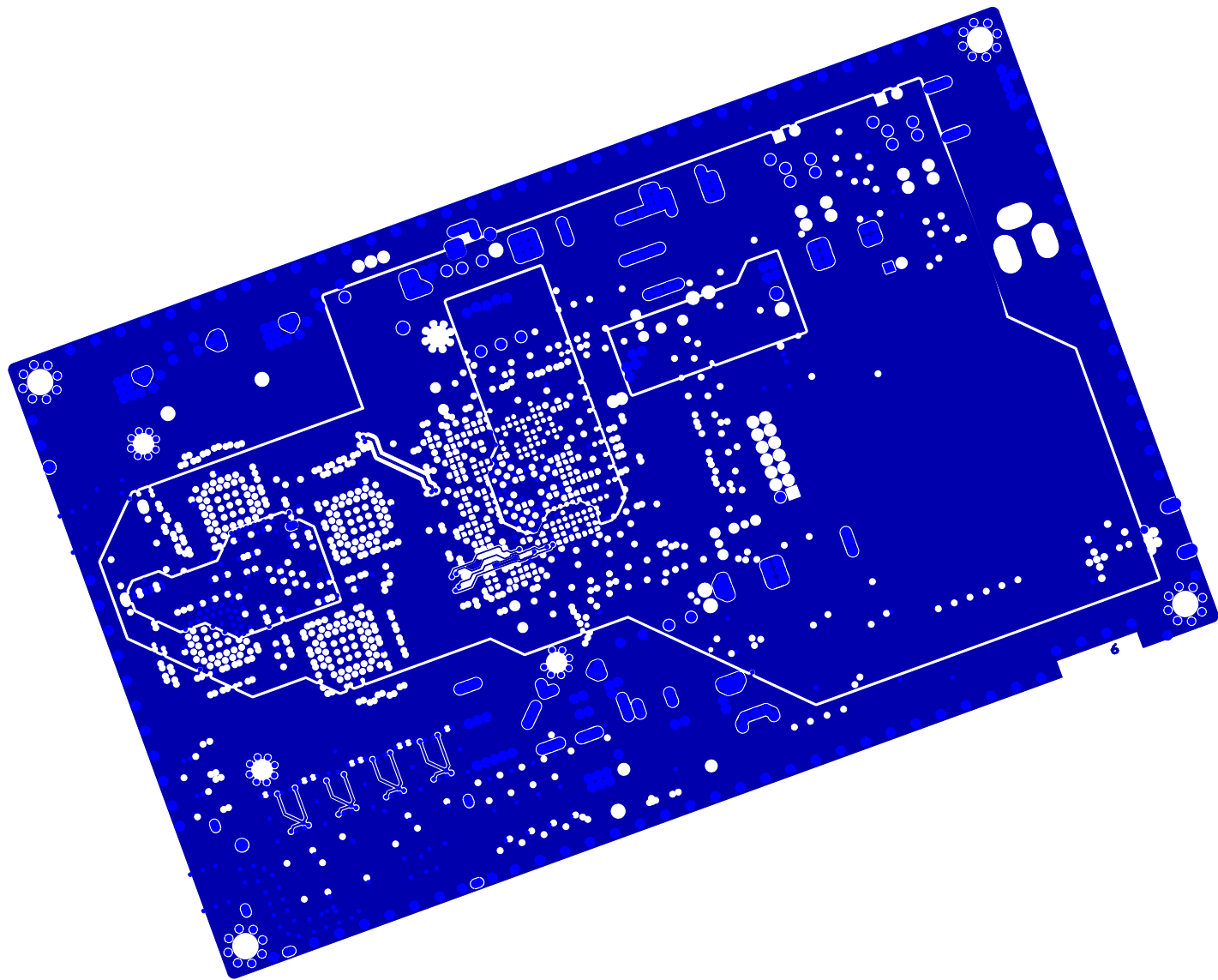
Layer 3



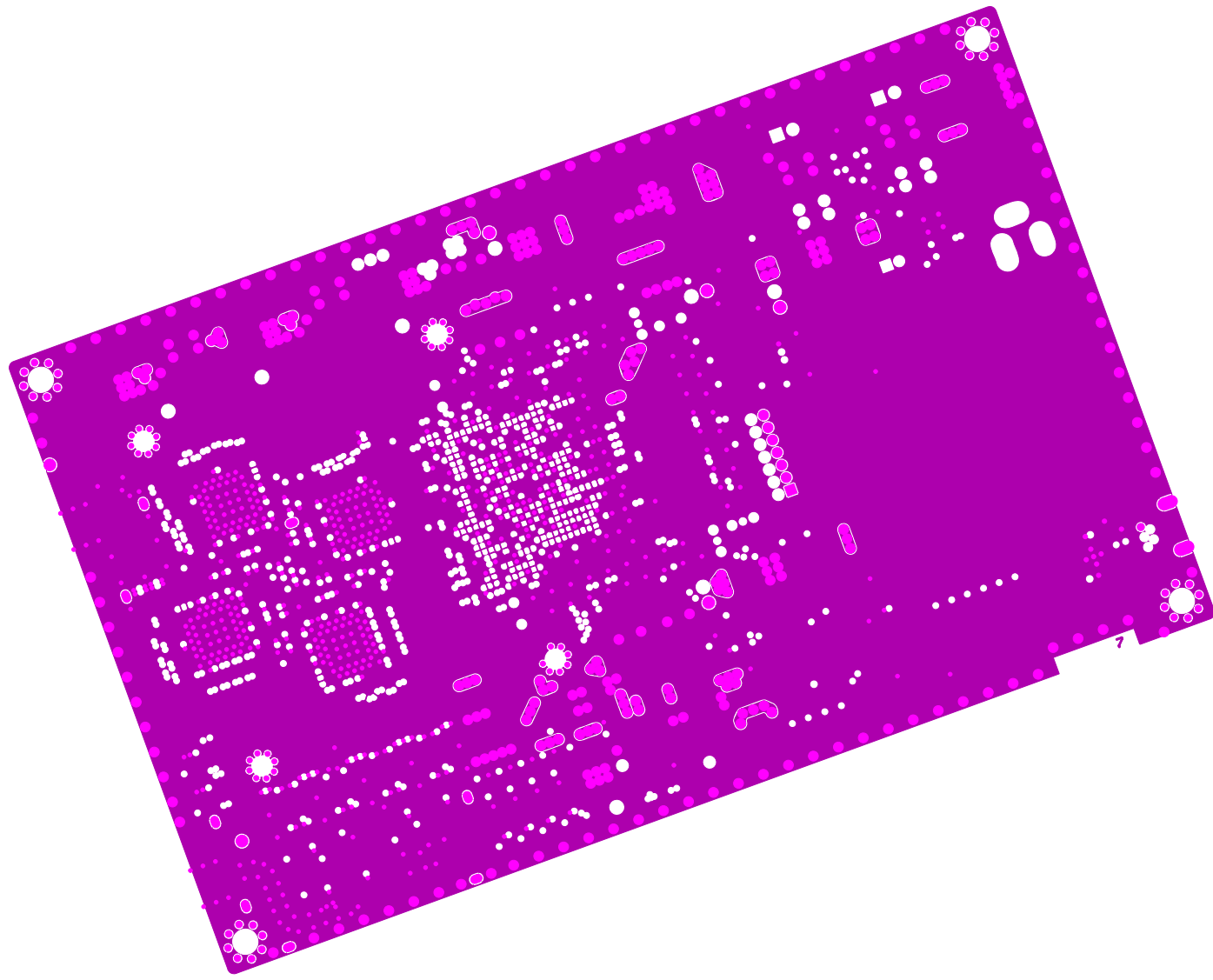
Layer 4 (GND)



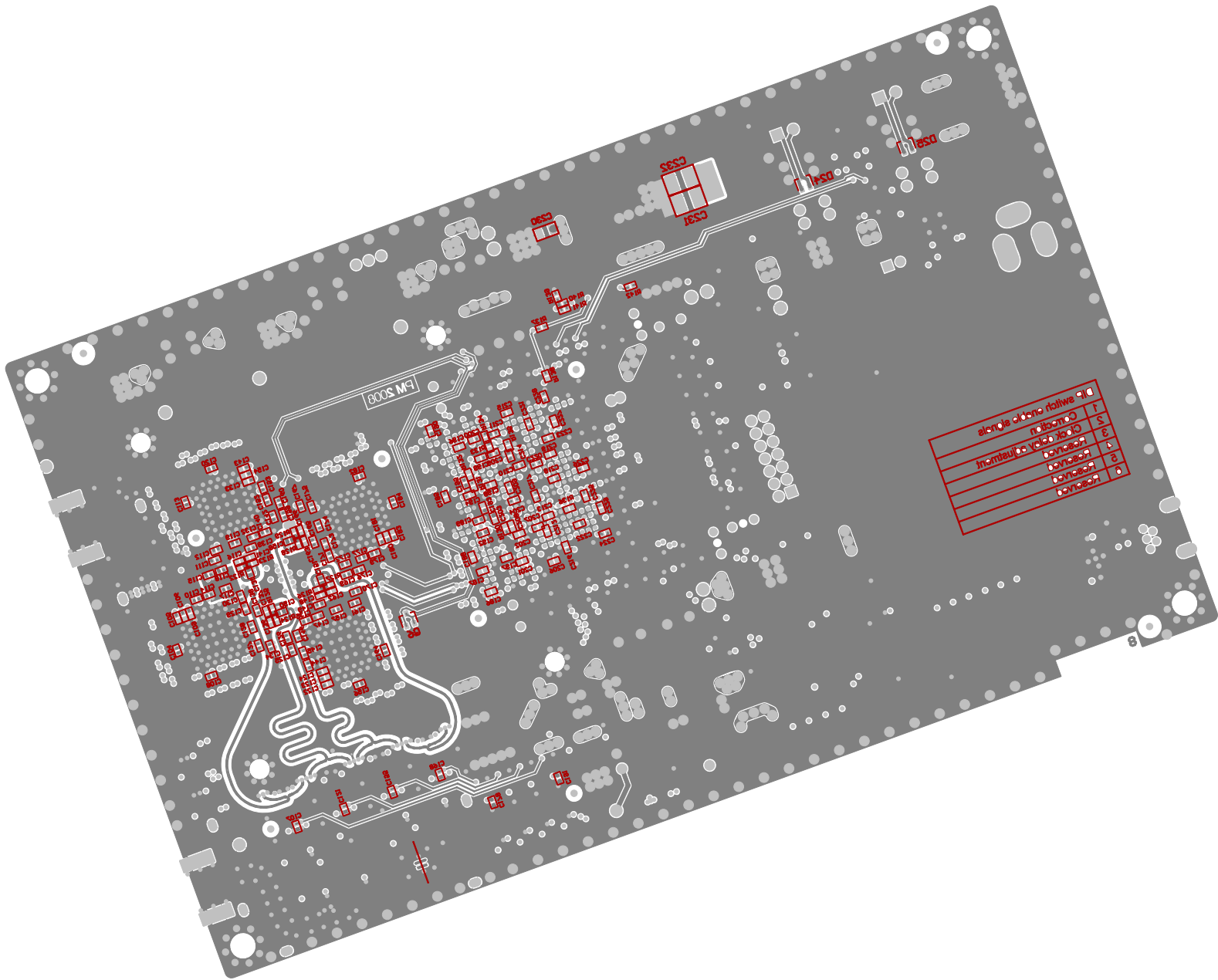
Layer5



Layer 6



Layer7 (GND)



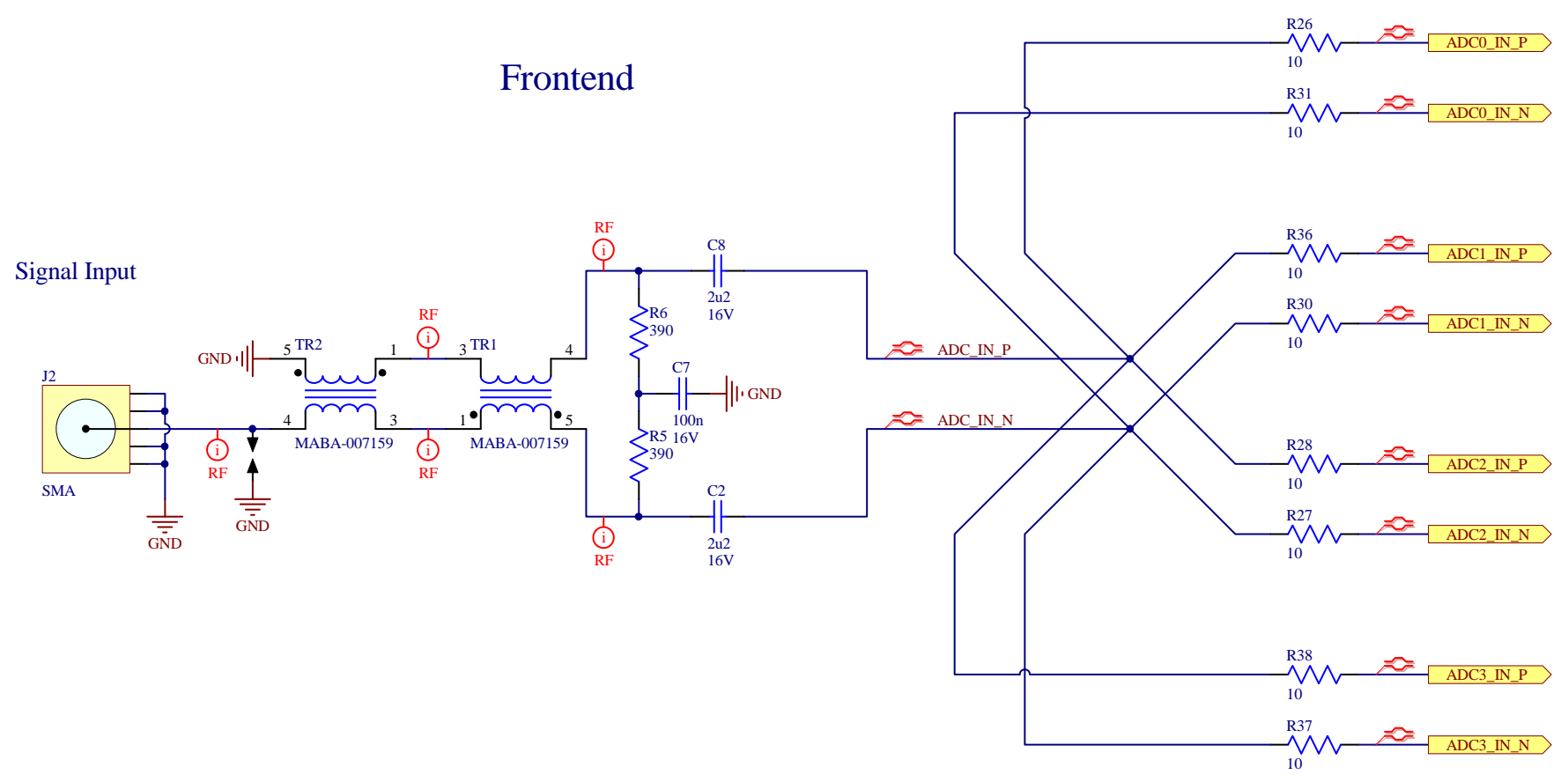
alcorde	alcorde	risoliva	010
alcorde	alcorde	risoliva	010
alcorde	alcorde	risoliva	010
alcorde	alcorde	risoliva	010
alcorde	alcorde	risoliva	010
alcorde	alcorde	risoliva	010
alcorde	alcorde	risoliva	010
alcorde	alcorde	risoliva	010
alcorde	alcorde	risoliva	010
alcorde	alcorde	risoliva	010

Layer8 bottom

ADS54RF63 ADX4 EVM

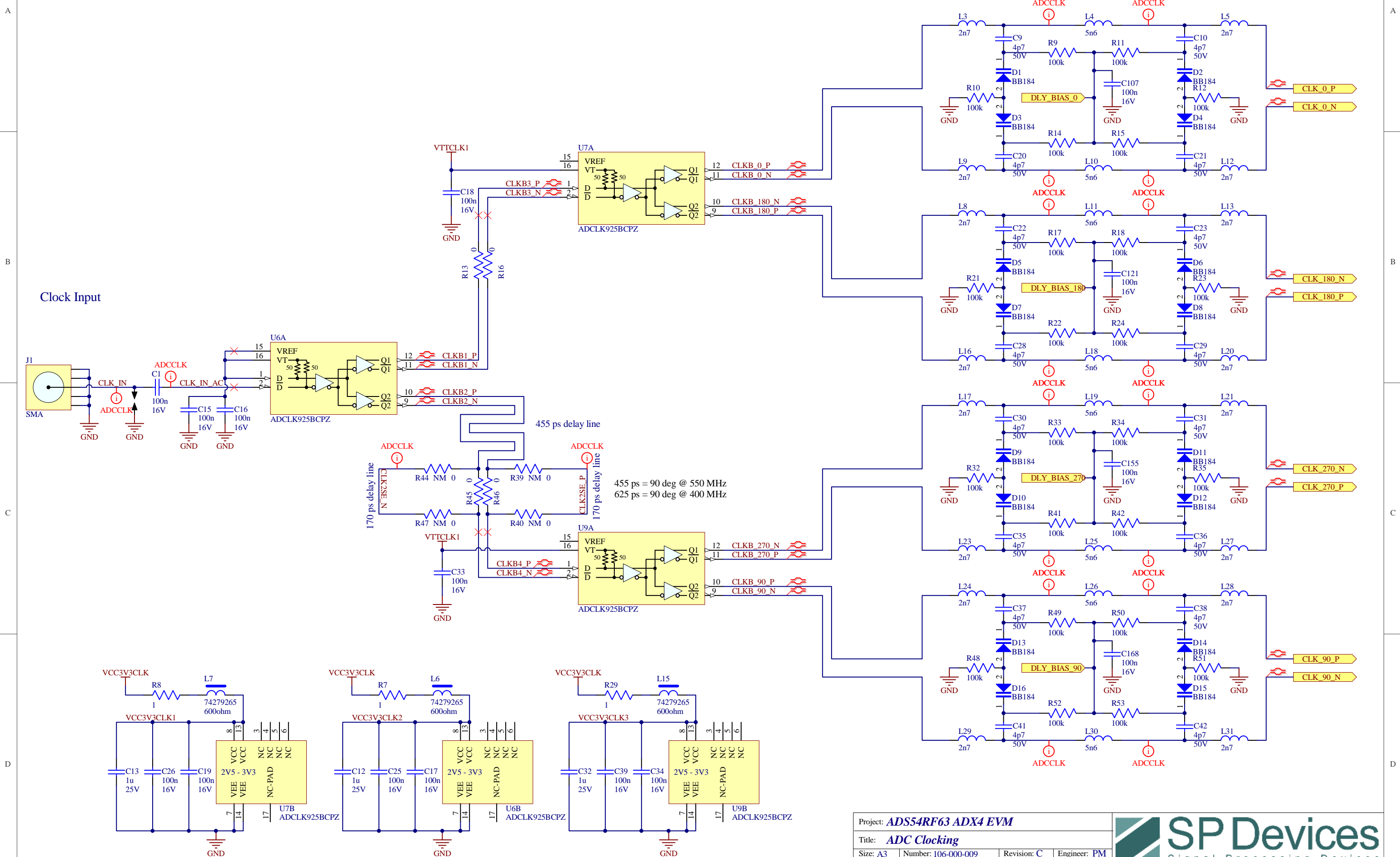
Table of Contents

1. Front Page
2. Front End
3. ADC Clocking
4. Delay Line DACs
5. ADCs
6. FPGA IO
7. Logic Analyzer Connectors
8. FPGA System
9. Power
10. Miscellaneous



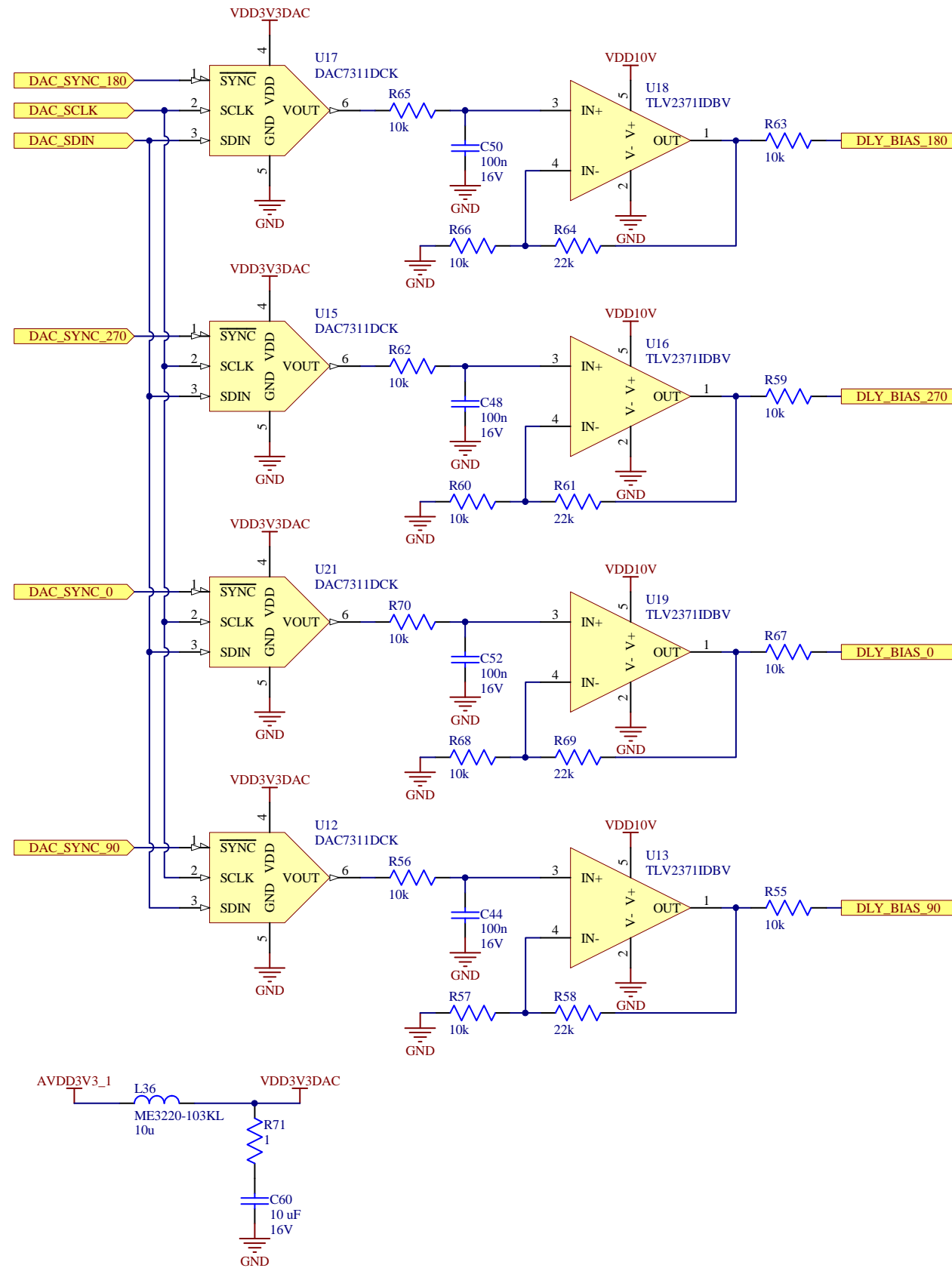
ADC clock phase adjustment

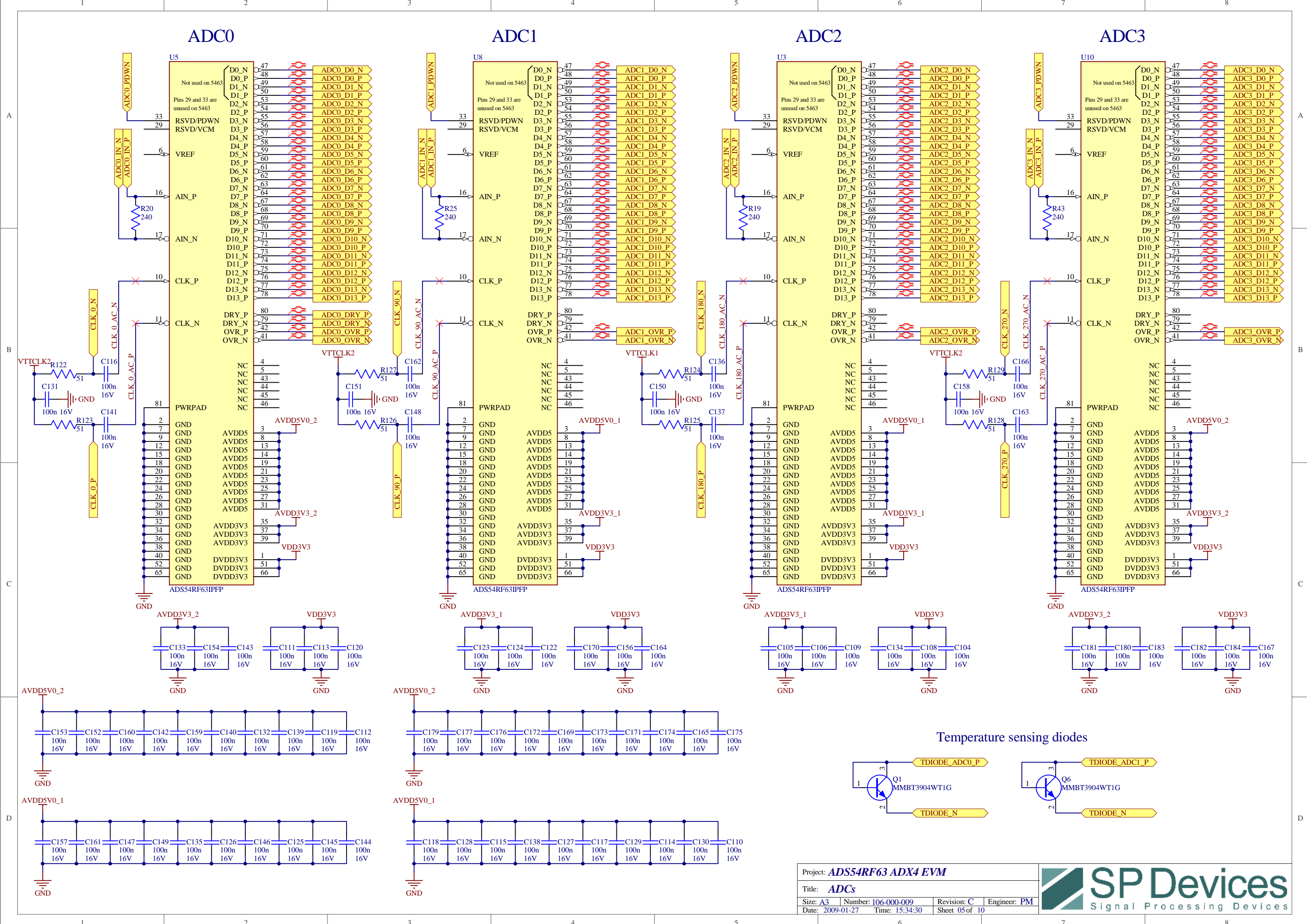
1-10V on bias gives from 290 ps to 190 ps delay



455 ps = 90 deg @ 550 MHz
625 ps = 90 deg @ 400 MHz

Delay line bias DACs

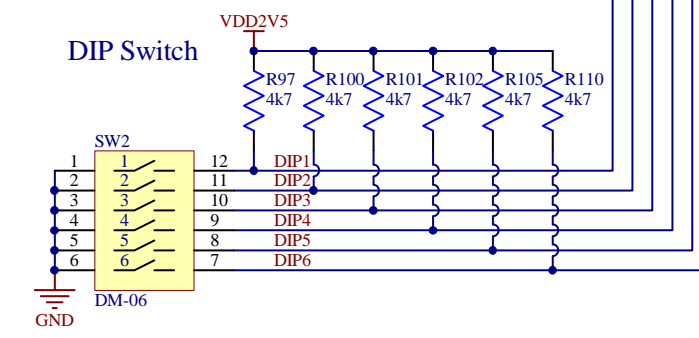
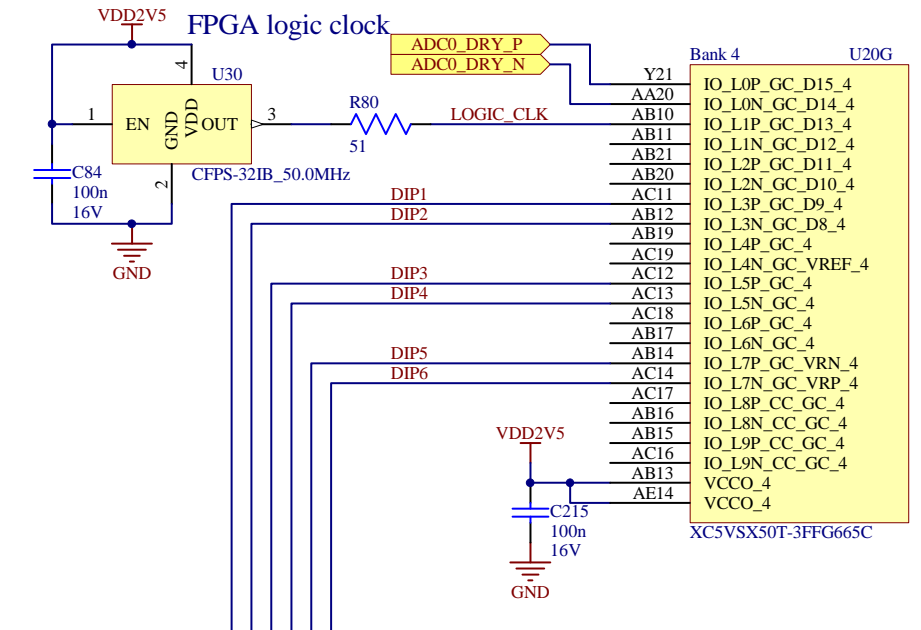
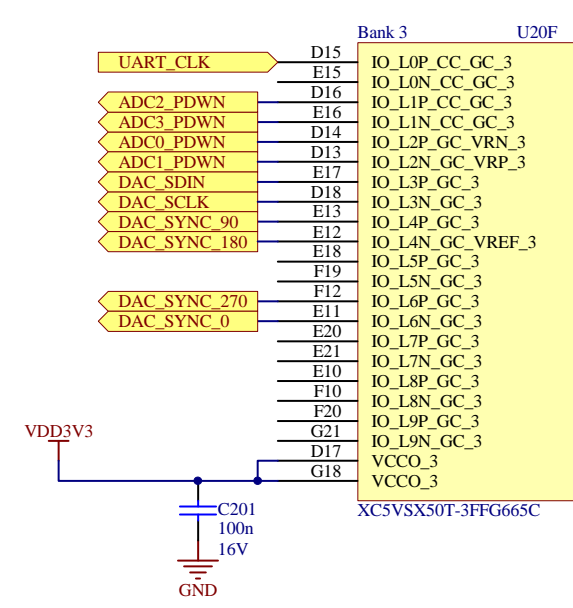
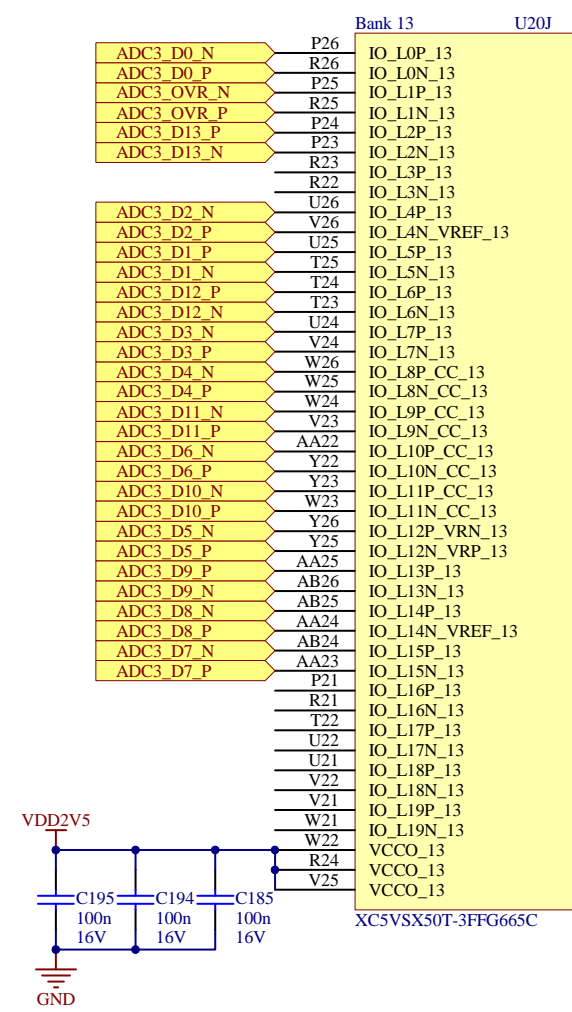
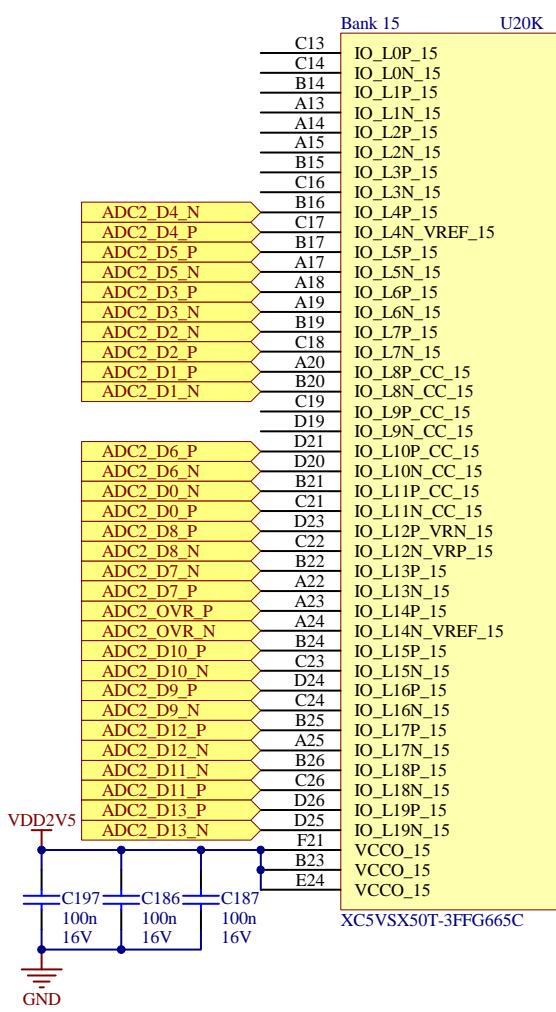
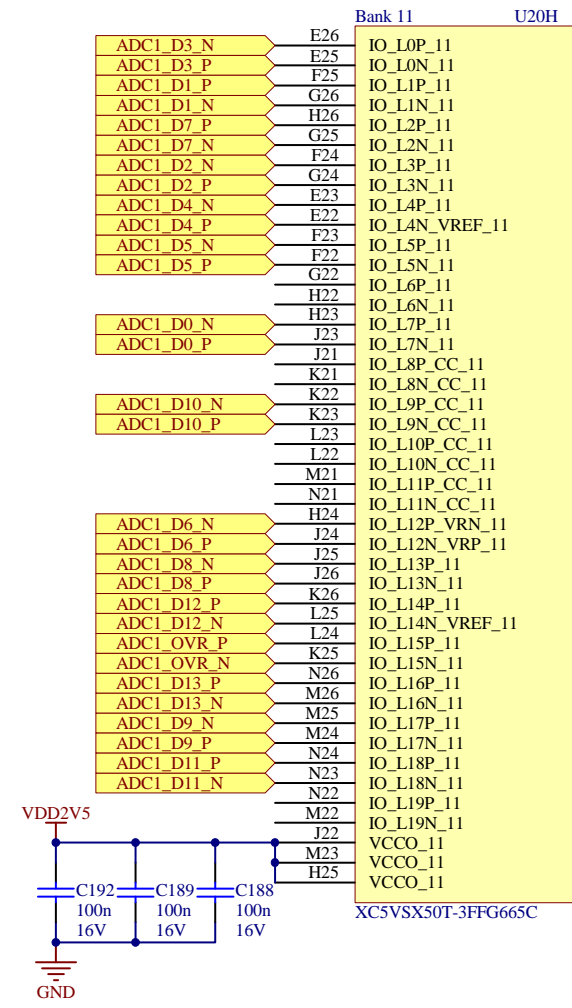
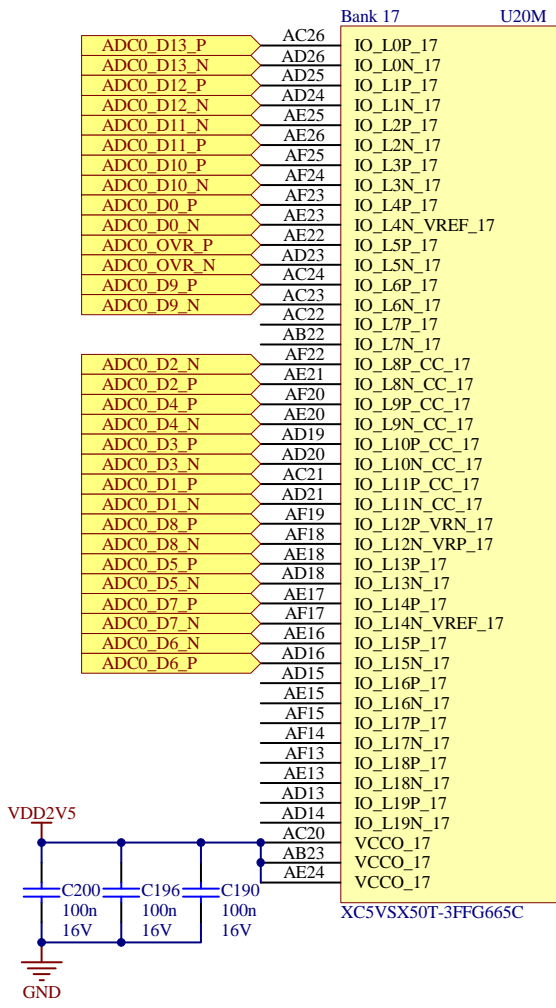




Project: ADS54RF63 ADX4 EVM			
Title: ADCs			
Size: A3	Number: 106-000-009	Revision: C	Engineer: PM
Date: 2009-01-27	Time: 15:34:30	Sheet 05 of 10	



FPGA IO



Logic Analyzer Connectors

Bank 16 U20L

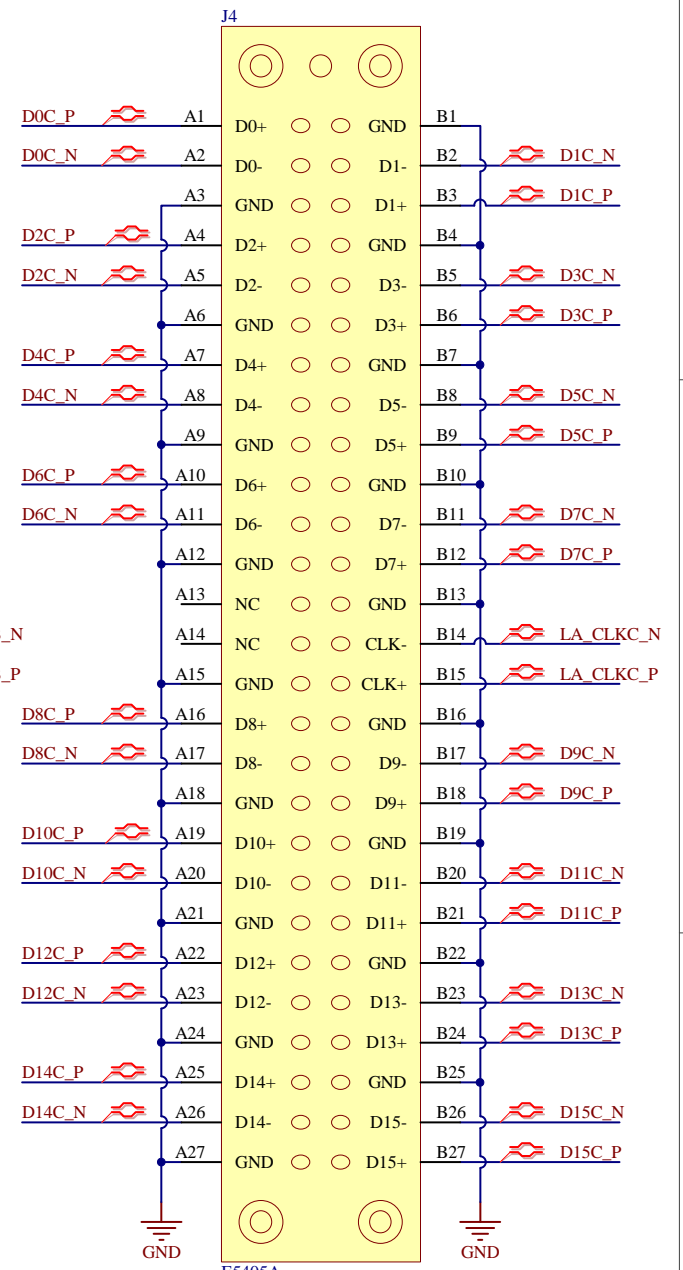
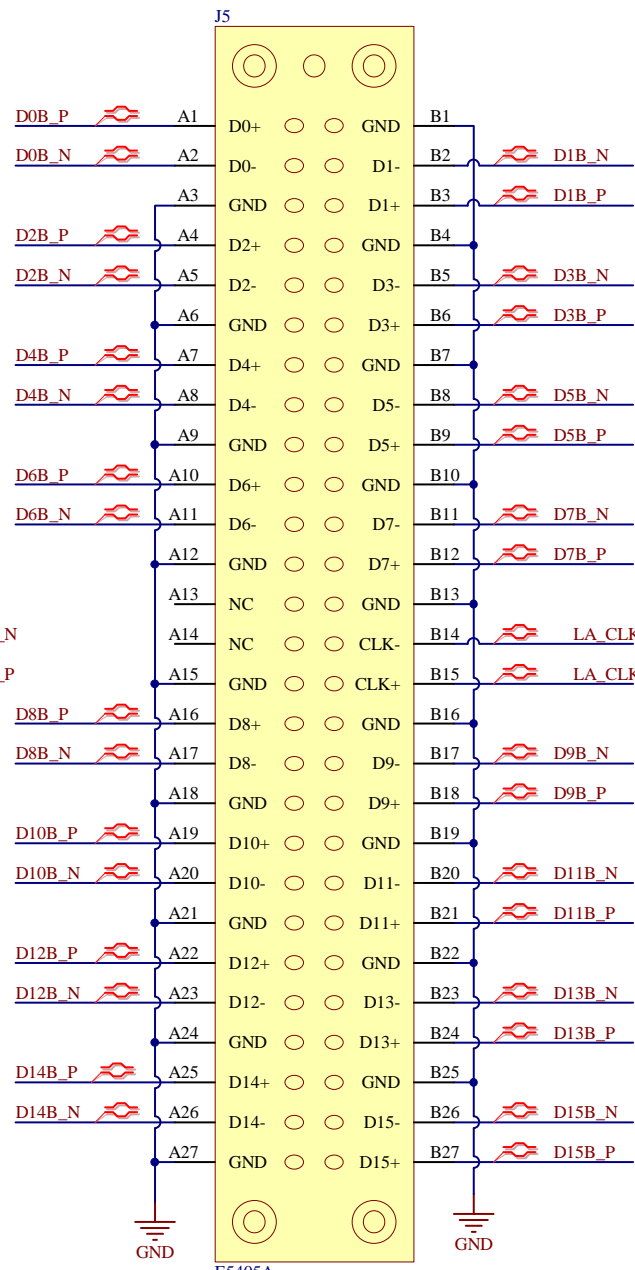
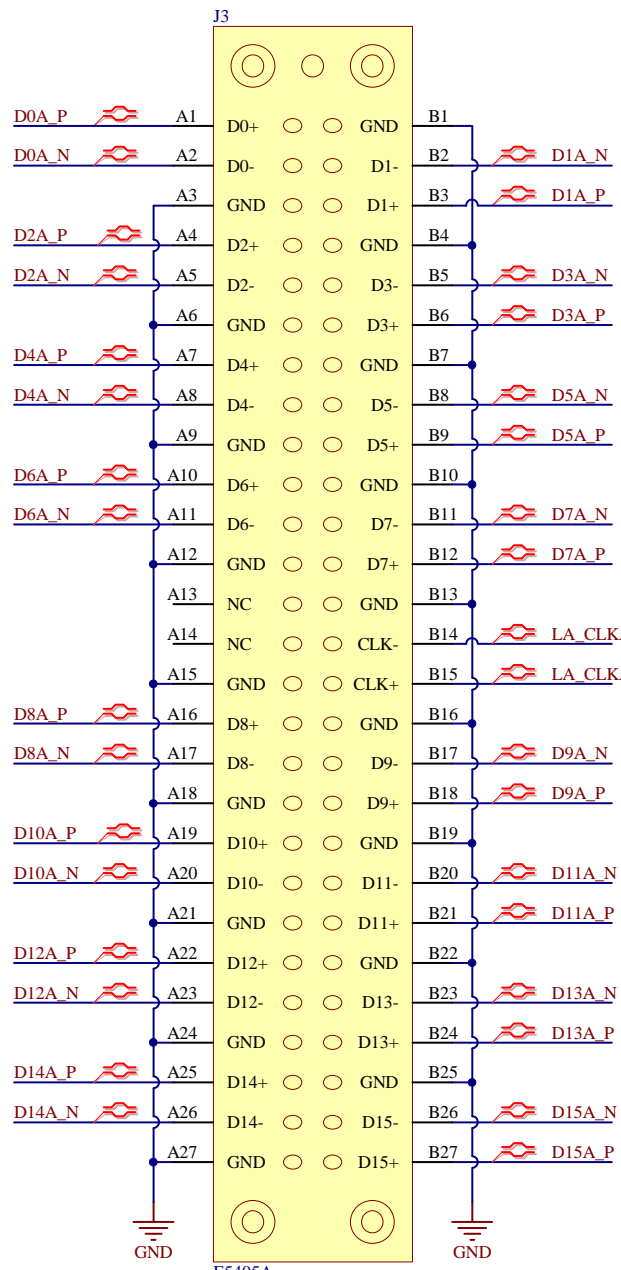
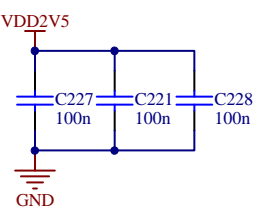
D0A_P	H7	IO_L0P_16
D0A_N	G7	IO_L0N_16
D2A_P	F7	IO_L1P_16
D2A_N	F8	IO_L1N_16
D9A_P	F9	IO_L2P_16
D9A_N	G9	IO_L2N_16
	H8	IO_L3P_16
	J8	IO_L3N_16
D11A_P	A9	IO_L4P_16
D11A_N	A8	IO_L4N_VREF_16
D3A_P	E8	IO_L5P_16
D3A_N	E7	IO_L5N_16
D12A_P	B9	IO_L6P_16
D12A_N	C8	IO_L6N_16
D4A_P	E6	IO_L7P_16
D4A_N	D6	IO_L7N_16
D15A_N	C9	IO_L8P_CC_16
D15A_P	D8	IO_L8N_CC_16
D8A_N	C7	IO_L9P_CC_16
D8A_P	C6	IO_L9N_CC_16
D10A_P	A7	IO_L10P_CC_16
D10A_N	B7	IO_L10N_CC_16
LA_CLKA_N	D9	IO_L11P_CC_16
LA_CLKA_P	D10	IO_L11N_CC_16
D7A_P	B6	IO_L12P_VRN_16
D7A_N	A5	IO_L12N_VRP_16
D13A_P	B10	IO_L13P_16
D13A_N	A10	IO_L13N_16
D5A_P	A4	IO_L14P_16
D5A_N	A3	IO_L14N_VREF_16
D14A_P	B11	IO_L15P_16
D14A_N	A12	IO_L15N_16
D6A_P	B4	IO_L16P_16
D6A_N	B5	IO_L16N_16
	B12	IO_L17P_16
	C12	IO_L17N_16
D1A_P	D5	IO_L18P_16
D1A_N	E5	IO_L18N_16
	C11	IO_L19P_16
	D11	IO_L19N_16
	D7	VCCO_16
	G8	VCCO_16
	C10	VCCO_16

Bank 12 U20I

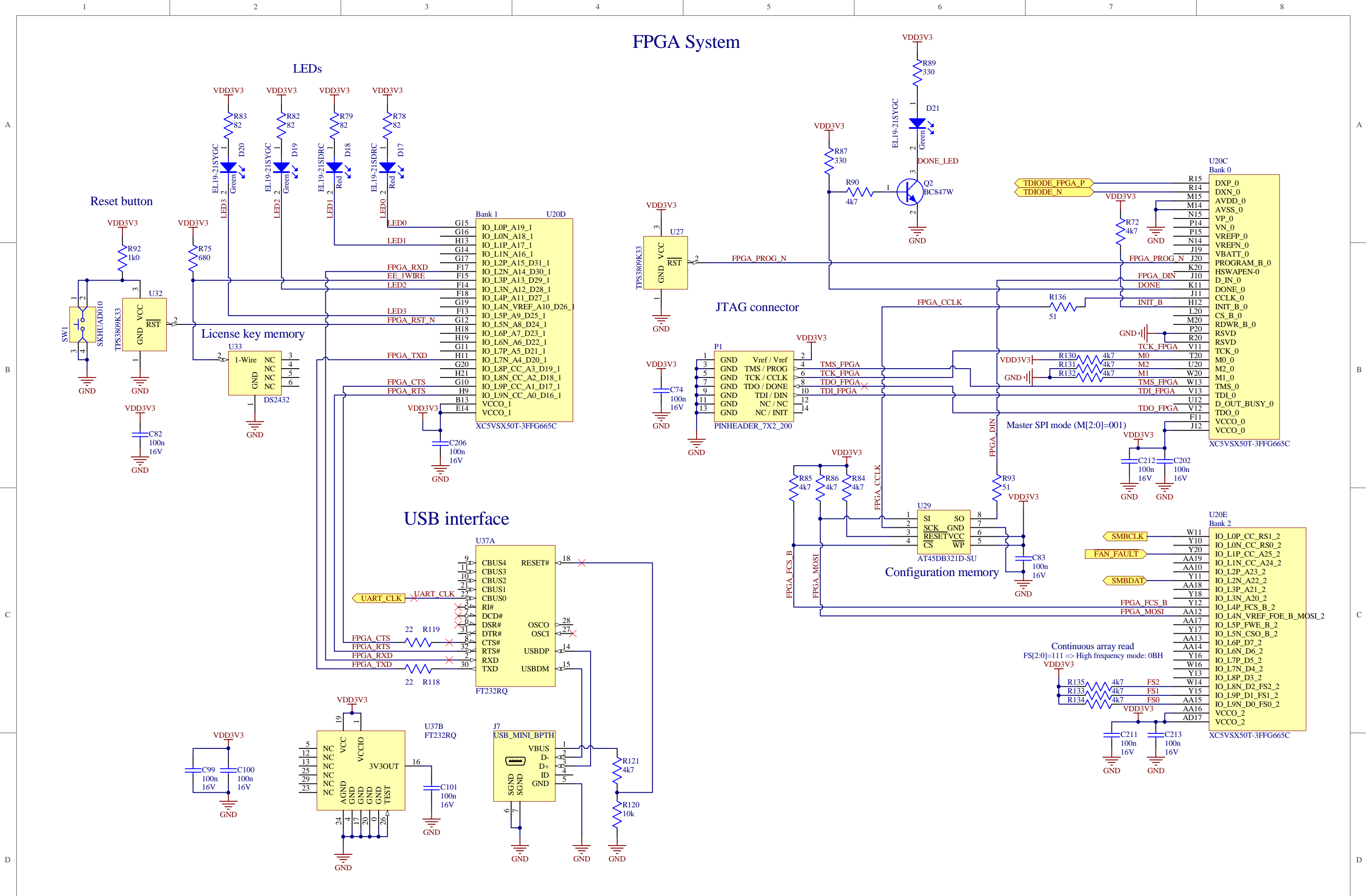
LA_CLKB_N	Y6	IO_L0P_12
LA_CLKB_P	Y5	IO_L0N_12
D2B_P	G6	IO_L1P_12
D2B_N	H6	IO_L1N_12
	Y4	IO_L2P_12
	W4	IO_L2N_12
D0B_N	G5	IO_L3P_12
D0B_P	F5	IO_L3N_12
	W5	IO_L4P_12
	W6	IO_L4N_VREF_12
D1B_N	G4	IO_L5P_12
D1B_P	H4	IO_L5N_12
	V6	IO_L6P_12
	V7	IO_L6N_12
D3B_P	J5	IO_L7P_12
D3B_N	J6	IO_L7N_12
D15B_P	U7	IO_L8P_CC_12
D15B_N	T8	IO_L8N_CC_12
D6B_P	K5	IO_L9P_CC_12
D6B_N	L5	IO_L9N_CC_12
D4B_N	K6	IO_L10P_CC_12
D4B_P	K7	IO_L10N_CC_12
D14B_P	U6	IO_L11P_CC_12
D14B_N	U5	IO_L11N_CC_12
D5B_N	K8	IO_L12P_VRN_12
D5B_P	L7	IO_L12N_VRP_12
D12B_N	T5	IO_L13P_12
D12B_P	R5	IO_L13N_12
D7B_P	M7	IO_L14P_12
D7B_N	L8	IO_L14N_VREF_12
D13B_P	R6	IO_L15P_12
D13B_N	T7	IO_L15N_12
D9B_P	P6	IO_L16P_12
D9B_N	N6	IO_L16N_12
D8B_P	M6	IO_L17P_12
D8B_N	N7	IO_L17N_12
D10B_P	N8	IO_L18P_12
D10B_N	P8	IO_L18N_12
D11B_P	R8	IO_L19P_12
D11B_N	R7	IO_L19N_12
	H5	VCCO_12
	L6	VCCO_12
	P7	VCCO_12

Bank 18 U20N

D15C_N	AF12	IO_L0P_18
D15C_P	AE12	IO_L0N_18
	V8	IO_L1P_18
	V9	IO_L1N_18
D14C_P	AE11	IO_L2P_18
D14C_N	AD11	IO_L2N_18
	W9	IO_L3P_18
	W8	IO_L3N_18
D13C_P	AD10	IO_L4P_18
D13C_N	AE10	IO_L4N_VREF_18
	Y7	IO_L5P_18
	Y8	IO_L5N_18
D12C_P	AF9	IO_L6P_18
D12C_N	AF10	IO_L6N_18
D7C_N	AA7	IO_L7P_18
D7C_P	AA8	IO_L7N_18
D8C_P	AF7	IO_L8P_CC_18
D8C_N	AF8	IO_L8N_CC_18
D0C_P	AA5	IO_L9P_CC_18
D0C_N	AB5	IO_L9N_CC_18
D1C_P	AB6	IO_L10P_CC_18
D1C_N	AB7	IO_L10N_CC_18
D9C_P	AE8	IO_L11P_CC_18
D9C_N	AE7	IO_L11N_CC_18
D4C_N	AC6	IO_L12P_VRN_18
D4C_P	AD5	IO_L12N_VRP_18
D5C_P	AE6	IO_L13P_18
D5C_N	AF5	IO_L13N_18
D3C_P	AE5	IO_L14P_18
D3C_N	AD4	IO_L14N_VREF_18
D2C_N	AF4	IO_L15P_18
D2C_P	AF3	IO_L15N_18
D6C_P	AD6	IO_L16P_18
D6C_N	AC7	IO_L16N_18
D10C_N	AC8	IO_L17P_18
D10C_P	AD8	IO_L17N_18
D11C_N	AD9	IO_L18P_18
D11C_P	AC9	IO_L18N_18
LA_CLKC_P	AB9	IO_L19P_18
LA_CLKC_N	AA9	IO_L19N_18
	AD7	VCCO_18
	AC10	VCCO_18

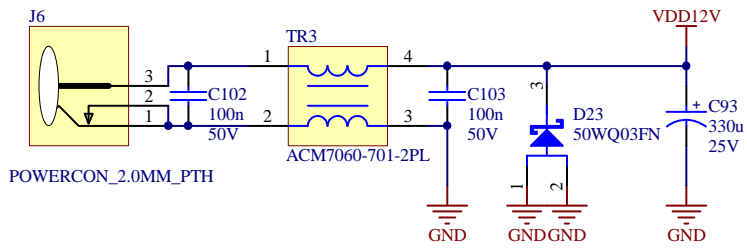


FPGA System

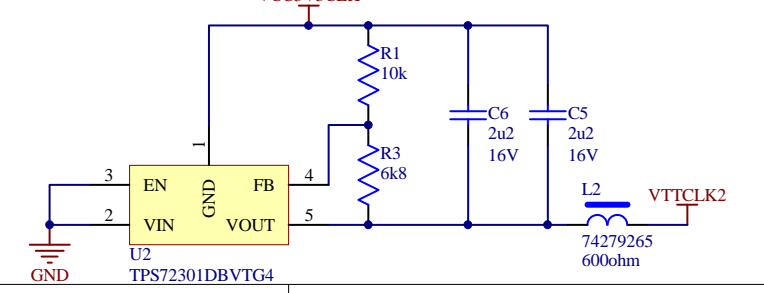
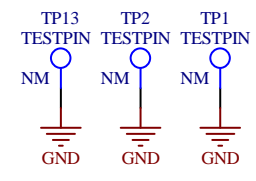
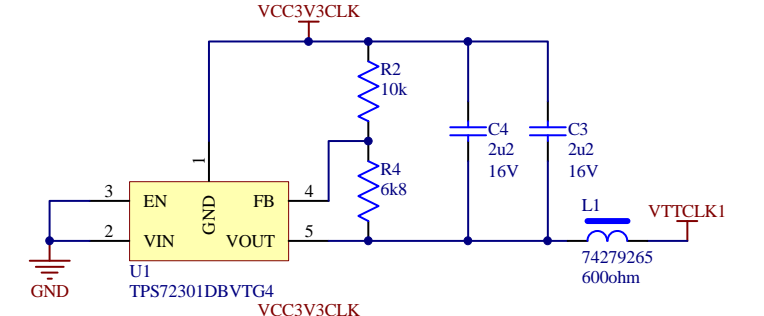
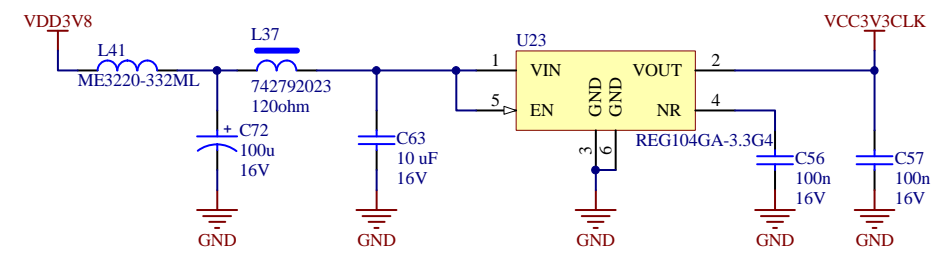
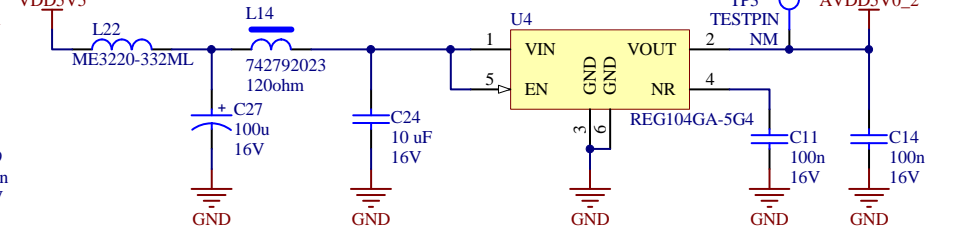
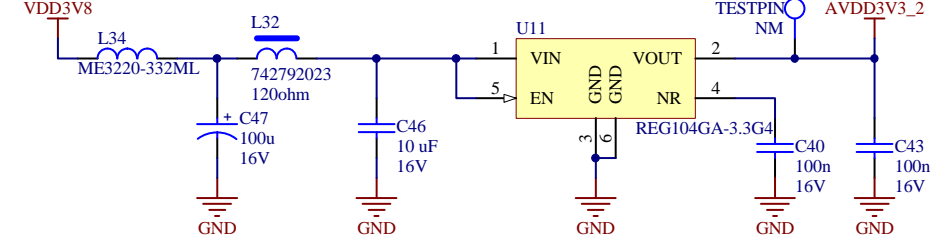
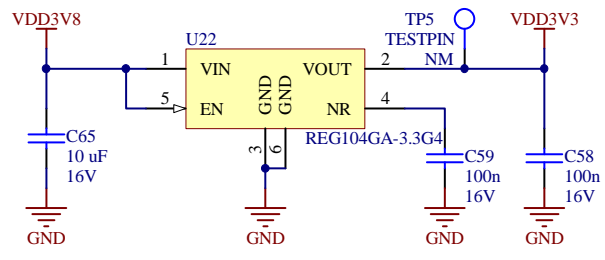
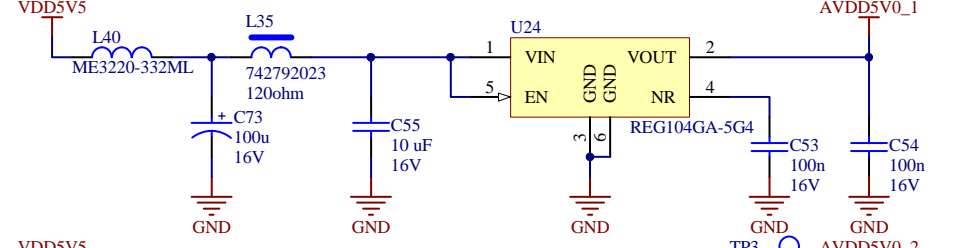
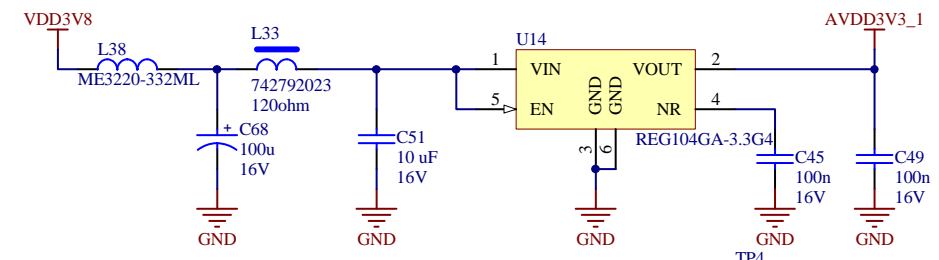
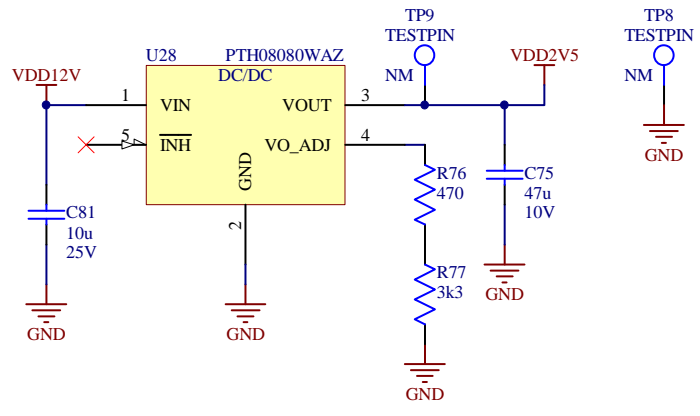
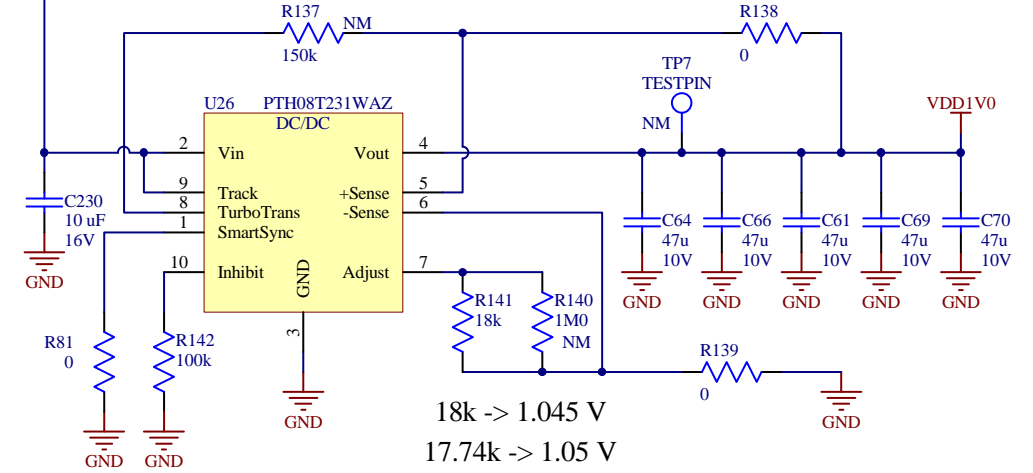
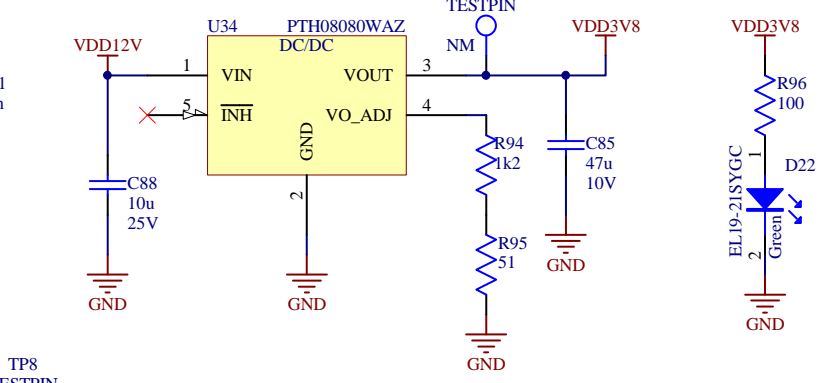
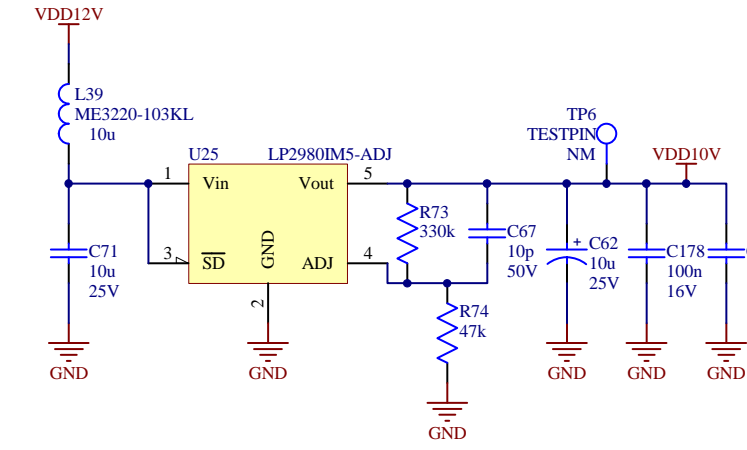
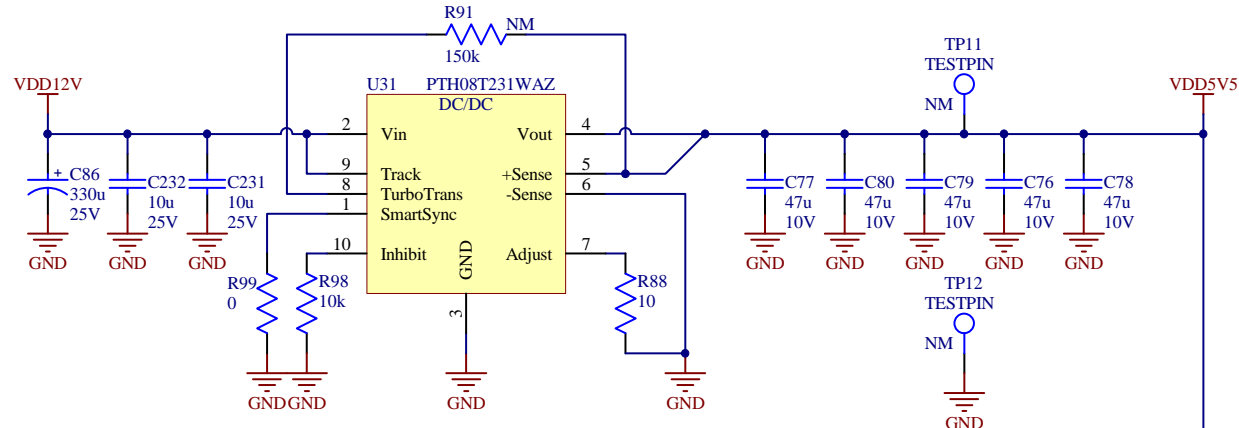


Power input connector

12V, 2A



Power supply



Project: ADS54RF63 ADX4 EVM			
Title: Power			
Size: A3	Number: 106-000-009	Revision: C	Engineer: PM
Date: 2009-01-27	Time: 15:34:32	Sheet 09 of 10	



A

B

C

D

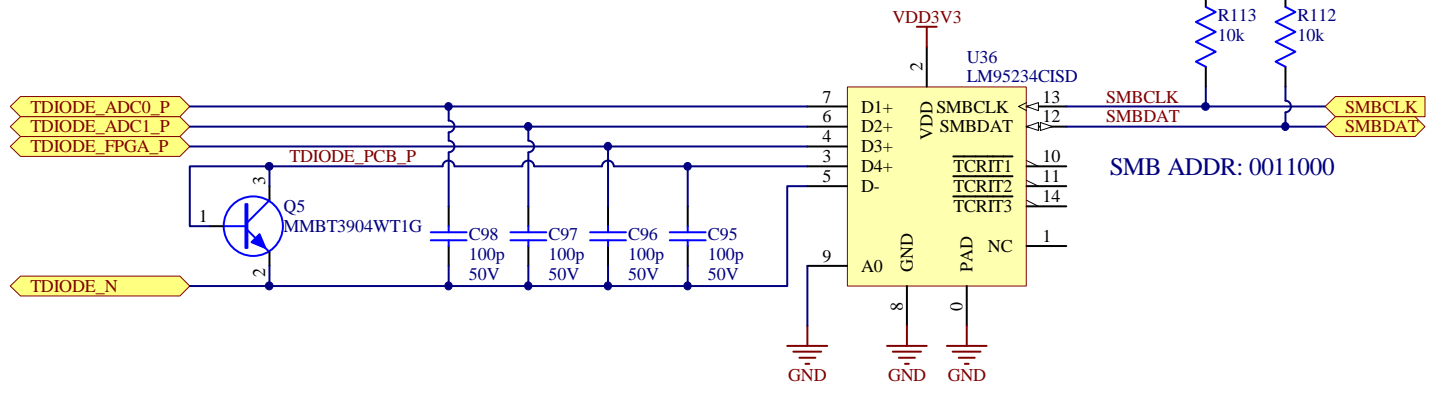
A

B

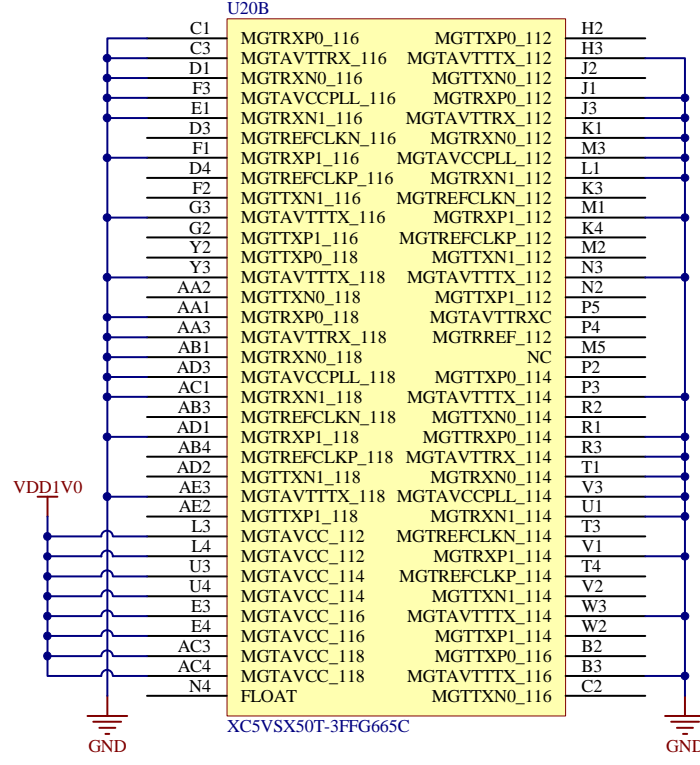
C

D

Temperature monitor/sensor

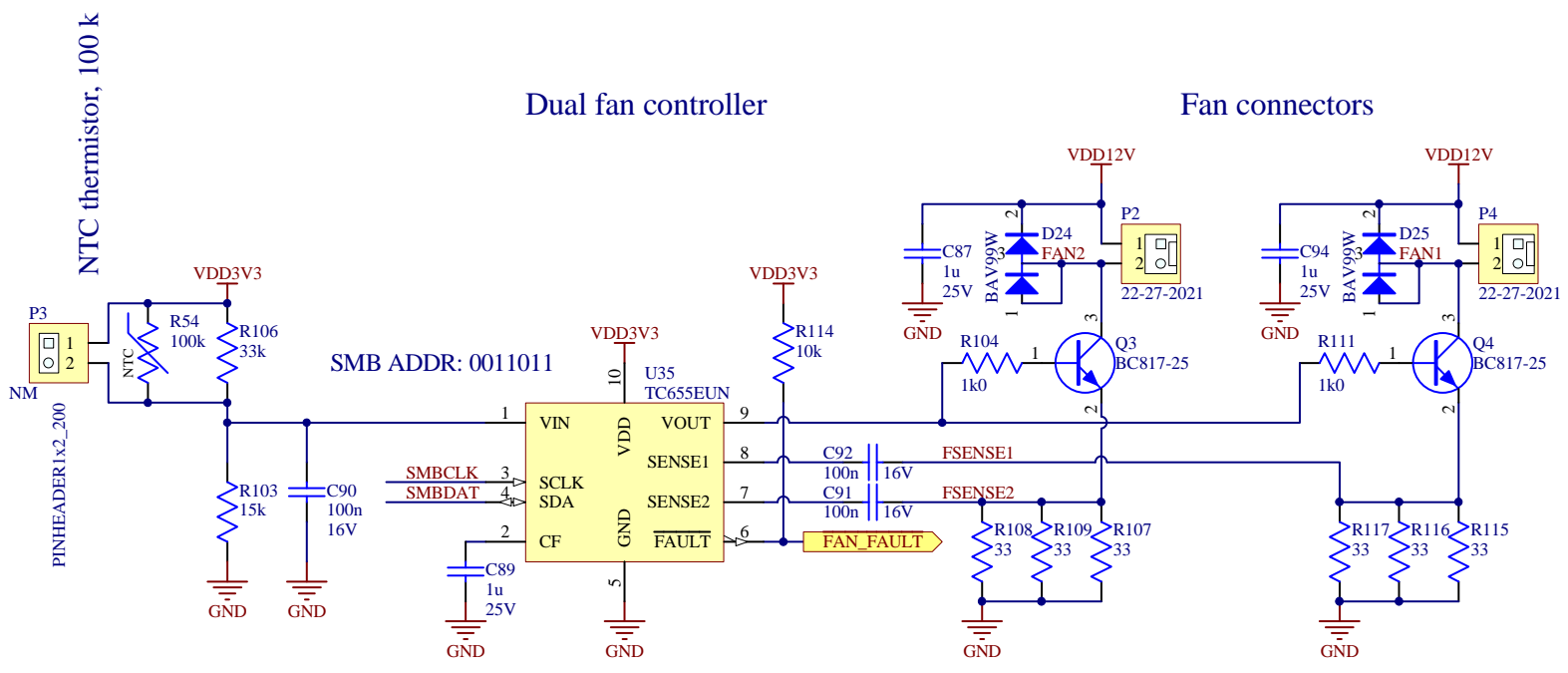


MGTs (unused)

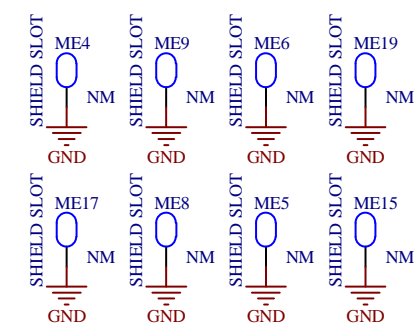


Dual fan controller

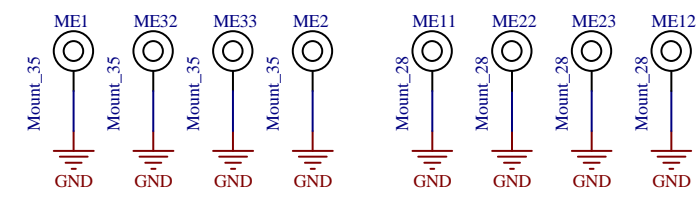
Fan connectors



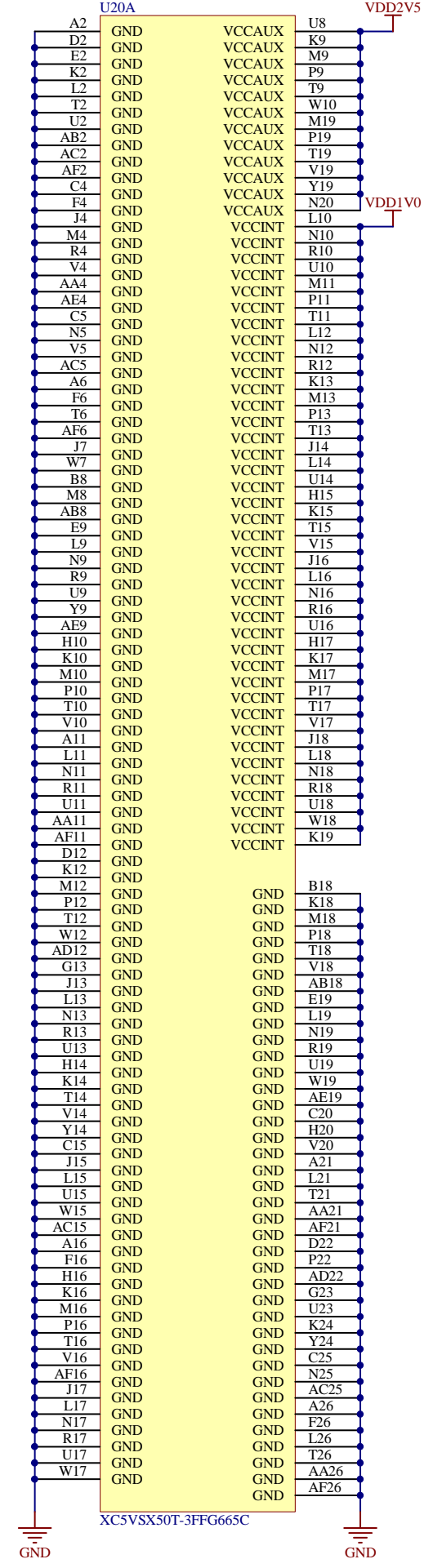
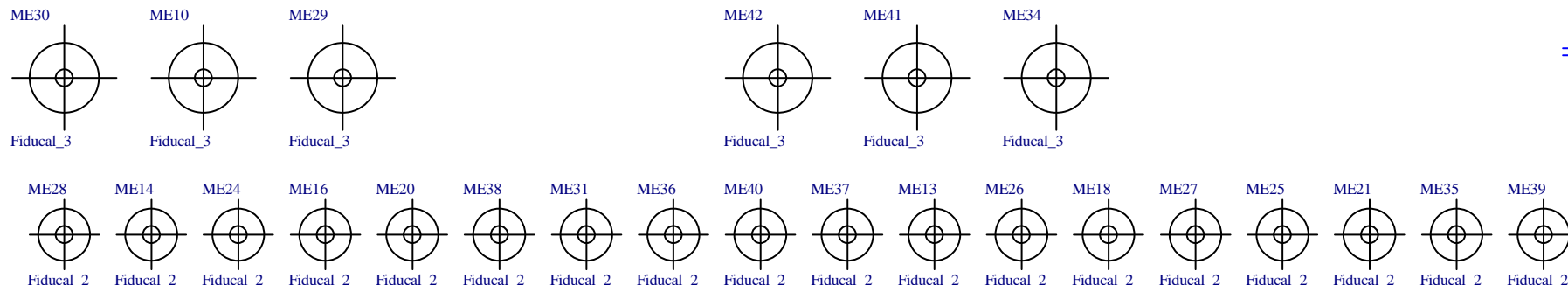
Holes for shields



Mounting holes



Fiducials



IMPORTANT NOTICE

Texas Instruments Incorporated and its subsidiaries (TI) reserve the right to make corrections, modifications, enhancements, improvements, and other changes to its products and services at any time and to discontinue any product or service without notice. Customers should obtain the latest relevant information before placing orders and should verify that such information is current and complete. All products are sold subject to TI's terms and conditions of sale supplied at the time of order acknowledgment.

TI warrants performance of its hardware products to the specifications applicable at the time of sale in accordance with TI's standard warranty. Testing and other quality control techniques are used to the extent TI deems necessary to support this warranty. Except where mandated by government requirements, testing of all parameters of each product is not necessarily performed.

TI assumes no liability for applications assistance or customer product design. Customers are responsible for their products and applications using TI components. To minimize the risks associated with customer products and applications, customers should provide adequate design and operating safeguards.

TI does not warrant or represent that any license, either express or implied, is granted under any TI patent right, copyright, mask work right, or other TI intellectual property right relating to any combination, machine, or process in which TI products or services are used. Information published by TI regarding third-party products or services does not constitute a license from TI to use such products or services or a warranty or endorsement thereof. Use of such information may require a license from a third party under the patents or other intellectual property of the third party, or a license from TI under the patents or other intellectual property of TI.

Reproduction of TI information in TI data books or data sheets is permissible only if reproduction is without alteration and is accompanied by all associated warranties, conditions, limitations, and notices. Reproduction of this information with alteration is an unfair and deceptive business practice. TI is not responsible or liable for such altered documentation. Information of third parties may be subject to additional restrictions.

Resale of TI products or services with statements different from or beyond the parameters stated by TI for that product or service voids all express and any implied warranties for the associated TI product or service and is an unfair and deceptive business practice. TI is not responsible or liable for any such statements.

TI products are not authorized for use in safety-critical applications (such as life support) where a failure of the TI product would reasonably be expected to cause severe personal injury or death, unless officers of the parties have executed an agreement specifically governing such use. Buyers represent that they have all necessary expertise in the safety and regulatory ramifications of their applications, and acknowledge and agree that they are solely responsible for all legal, regulatory and safety-related requirements concerning their products and any use of TI products in such safety-critical applications, notwithstanding any applications-related information or support that may be provided by TI. Further, Buyers must fully indemnify TI and its representatives against any damages arising out of the use of TI products in such safety-critical applications.

TI products are neither designed nor intended for use in military/aerospace applications or environments unless the TI products are specifically designated by TI as military-grade or "enhanced plastic." Only products designated by TI as military-grade meet military specifications. Buyers acknowledge and agree that any such use of TI products which TI has not designated as military-grade is solely at the Buyer's risk, and that they are solely responsible for compliance with all legal and regulatory requirements in connection with such use.

TI products are neither designed nor intended for use in automotive applications or environments unless the specific TI products are designated by TI as compliant with ISO/TS 16949 requirements. Buyers acknowledge and agree that, if they use any non-designated products in automotive applications, TI will not be responsible for any failure to meet such requirements.

Following are URLs where you can obtain information on other Texas Instruments products and application solutions:

Products

Amplifiers	amplifier.ti.com
Data Converters	dataconverter.ti.com
DLP® Products	www.dlp.com
DSP	dsp.ti.com
Clocks and Timers	www.ti.com/clocks
Interface	interface.ti.com
Logic	logic.ti.com
Power Mgmt	power.ti.com
Microcontrollers	microcontroller.ti.com
RFID	www.ti-rfid.com
RF/IF and ZigBee® Solutions	www.ti.com/lprf

Applications

Audio	www.ti.com/audio
Automotive	www.ti.com/automotive
Broadband	www.ti.com/broadband
Digital Control	www.ti.com/digitalcontrol
Medical	www.ti.com/medical
Military	www.ti.com/military
Optical Networking	www.ti.com/opticalnetwork
Security	www.ti.com/security
Telephony	www.ti.com/telephony
Video & Imaging	www.ti.com/video
Wireless	www.ti.com/wireless

Mailing Address: Texas Instruments, Post Office Box 655303, Dallas, Texas 75265
Copyright © 2009, Texas Instruments Incorporated