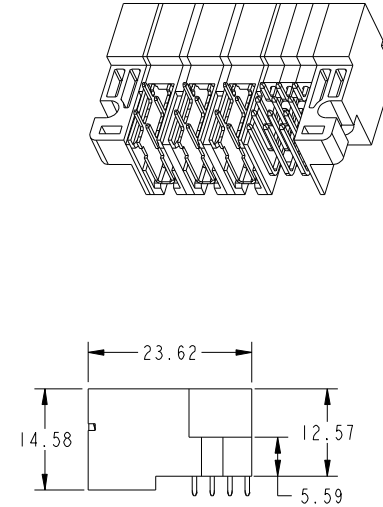
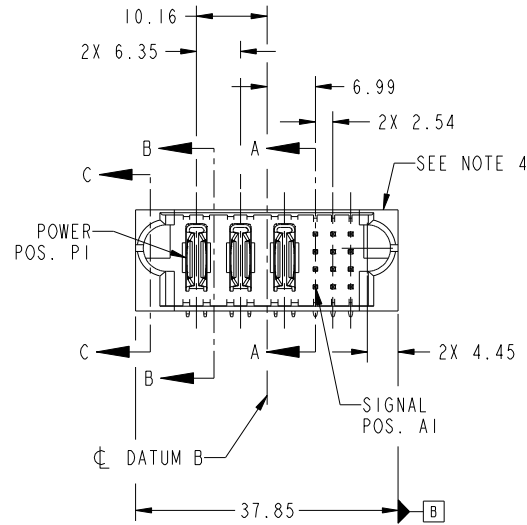
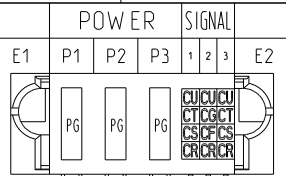


Tous droits strictement reserves. Reproduction ou communication a des tiers interdite sous quelque forme que ce soit sans autorisation écrite du propriétaire. Propriete de c FCI. Droits de reproduction FCI.

All rights strictly reserved. Reproduction or issue to third parties in any form whatever is not permitted without written authority from the proprietor. Property of FCI. Copyright FCI.



PRODUCT NO.	ROWS
51732-062... NOTE 3	D C B A



CODE	DIM "M" MATING LENGTH	CONTACT TYPE
PG	[N/A]	POWER
CR	[6.86]	SIGNAL
CS	[6.86]	SIGNAL
CT	[6.86]	SIGNAL
CU	[6.86]	SIGNAL
CG	[5.59]	SIGNAL
CF	[5.59]	SIGNAL

mat'l code				SEE NOTE		tolerances unless otherwise specified		CUSTOMER	
litr	ecn no.	dr	date	linear	0.X ±0.5	COPY		FCI	
A	DG10-0239	WD	06/25/10	angles	0.XX ±0.25	projection		www.fciconnect.com	
					0.XXX ±0.1	MIM		title	
				dr	0° ±2°	scale		3P + 12S	
				enr	Warren Du 04/26/10	1:1		RIGHT ANGLE SOLDER HEADER	
				chr	Warren Du 04/26/10			product family	
				appd	PM Zheng 04/26/10			PwrBlade	
					Joseph Hsia 04/26/10			code	
sheet index	revision sheet	A	A	A	A			213	
		1	2	3	4			size	
								dwg no	
								A	
								51732-062	
								sheet	
								1 of 4	

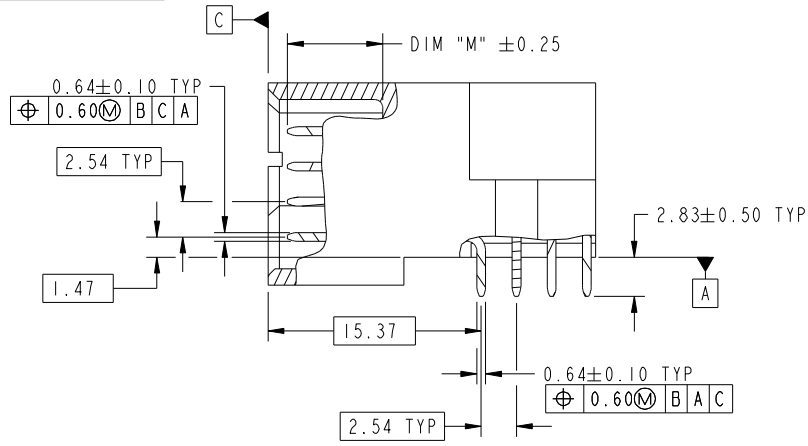
cage code 22526

Tous droits strictement reserves. Reproduction ou communication a des tiers interdite sous quelque forme que ce soit sans autorisation écrite du propriétaire. Propriete de c FCI. Droits de reproduction FCI.

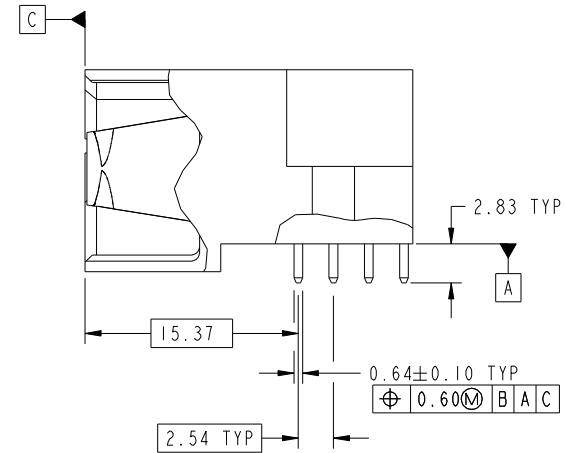
All rights strictly reserved. Reproduction or issue to third parties in any form whatever is not permitted without written authority from the proprietor. Property of FCI. Copyright FCI.



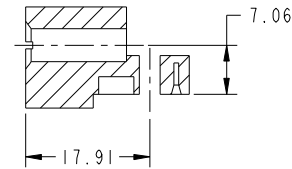
PRODUCT NUMBER  
51732-062\_\_  
NOTE: 3



BROKEN-OUT SECTION A-A  
SCALE 2:1



BROKEN-OUT SECTION B-B  
SCALE 2:1



SECTION C-C

mat'l code				SEE NOTE	tolerances unless otherwise specified		CUSTOMER		FCI	
ltr	ecn no.	dr	date	linear	0.X ± 0.5	COPY		www.fciconnect.com		
A				angles	0.XX ± 0.25	projection		title		
				dr	0.XXX ± 0.1	MIM		3P + 12S		
				enr	0° ± 2°	scale		RIGHT ANGLE SOLDER HEADER		
				chr	Warren Du 04/26/10	1:1		product family		code
				appd	Warren Du 04/26/10			PwrBlade		213
sheet index		revision sheet			PM Zheng 04/26/10			size		sheet
					Joseph Hsia 04/26/10			dwg no		2 of 4
								A		51732-062

cage code 22526

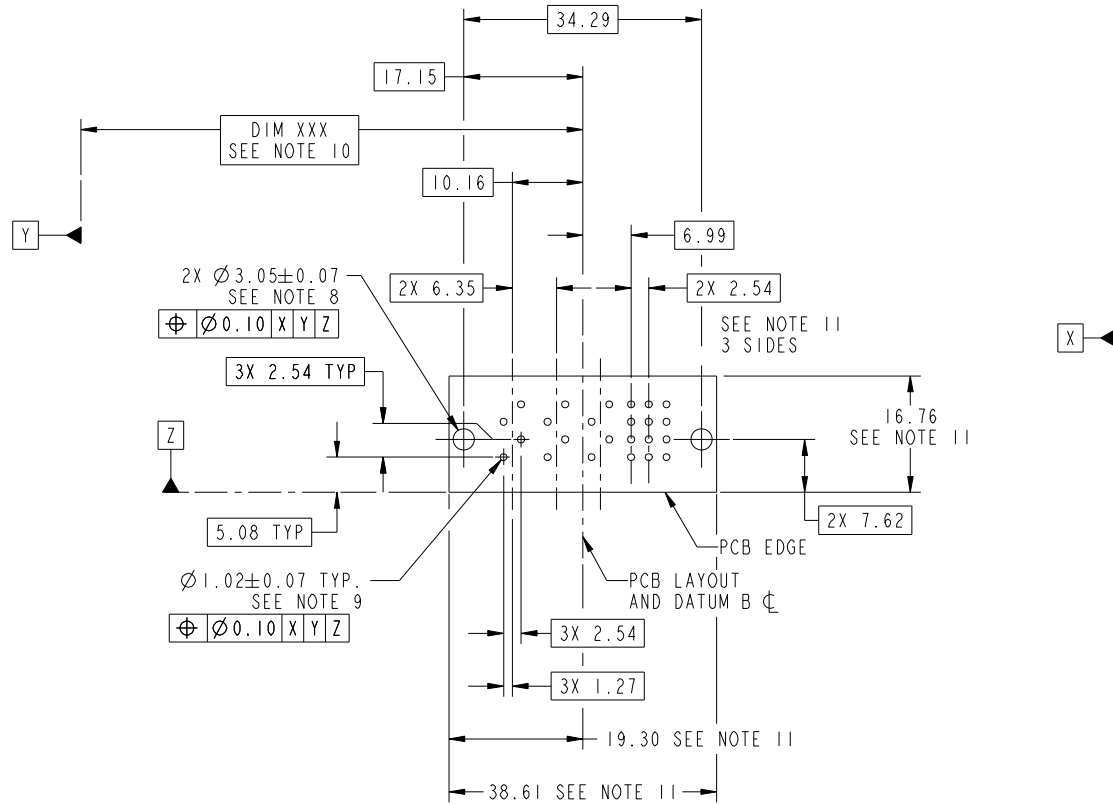
Pro/E

Tous droits strictement reserves. Reproduction ou communication a des tiers interdite sous quelque forme que ce soit sans autorisation écrite du propriétaire. Propriete de c FCI. Droits de reproduction FCI.

All rights strictly reserved. Reproduction or issue to third parties in any form whatever is not permitted without written authority from the proprietor. Property of FCI. Copyright FCI.



PRODUCT NUMBER  
51732-062\_\_  
NOTE: 3



RECOMMENDED PCB LAYOUT

mat'l code				SEE NOTE		tolerances unless otherwise specified		CUSTOMER		FCI	
ltr	ecn no.	dr	date	linear	0.X ± 0.5	COPY		www.fciconnect.com		title	
A				linear	0.XX ± 0.25	projection		3P + 12S		RIGHT ANGLE SOLDER HEADER	
				angles	0.XXX ± 0.1	MIM		product family		PwrBlade	
				dr	Warren Du 04/26/10	scale		size		code	
				enr	Warren Du 04/26/10	1:1		dwg no		213	
				chr	PM Zheng 04/26/10			51732-062		sheet	
				appd	Joseph Hsia 04/26/10			A		3 of 4	
sheet index	revision sheet										

cage code 22526

Pro/E

Tous droits strictement reserves. Reproduction ou communication a des tiers interdite sous quelque forme que ce soit sans autorisation écrite du propriétaire. Propriete de c FCI. Droits de reproduction FCI.



All rights strictly reserved. Reproduction or issue to third parties in any form whatever is not permitted without written authority from the proprietor. Property of FCI. Copyright FCI.

PRODUCT NUMBER  
51732-062--  
NOTE: 3

NOTES:

1. DIMENSIONS AND TOLERANCES ARE IN ACCORDANCE WITH ASME Y14.5M, 1994 UNLESS OTHERWISE SPECIFIED.

CONNECTOR NOTES:

- 2. HOUSING MATERIAL: UL 94 V-0 GLASS FILLED HIGH-TEMP THERMOPLASTIC  
POWER CONTACT MATERIAL: COPPER ALLOY  
SIGNAL PIN MATERIAL: COPPER ALLOY
- 3. SEE ITEM 1 & 2 IN PRINT 10064183 FOR PLATING SPEC OF 51732-062 AND 51732-062LF RESPECTIVELY
- 4. MANUFACTURER'S NAME, DATE CODE AND OPTIONAL P/N TO APPEAR ON THIS SURFACE. THE P/N CAN BE OMITTED IF THERE IS NOT ENOUGH SPACE ON THIS SURFACE.
- 5. PRODUCT SPECIFICATION GS-12-149.  
APPLICATION SPECIFICATION BUS-20-067.
- 6. PACKAGED IN TRAYS.

PCB NOTES:

- 7. ALL HOLE DIAMETERS ARE FINISHED HOLE SIZE.
- 8. MOUNTING HOLES, WHERE APPLICABLE, ARE UNPLATED.
- 9.  $\varnothing 1.151 \pm 0.025$  DRILLED HOLES PLATED WITH  
0.008 MIN SnPb OR Sn OVER 0.03  
TO 0.08 Cu PLATING TO ACHIEVE  
 $\varnothing 1.02 \pm 0.07$  HOLE.
- 10. "DIM XXX" TO BE DETERMINED BY THE CUSTOMER.
- 11. CONNECTOR KEEP-OUT ZONE.

mat'l code		SEE NOTE		tolerances unless otherwise specified		CUSTOMER		FCI	
ltr	ecr no.	dr	date	linear	0.X ± 0.5	COPY		www.fciconnect.com	
A				linear	0.XX ± 0.25	projection		title 3P + 12S RIGHT ANGLE SOLDER HEADER	
				angles	0.XXX ± 0.1			product family	PwrBlade
				dr	Warren Du 04/26/10	scale	size	dwg no	213
				enrg	Warren Du 04/26/10	1:1	A	51732-062	sheet
				chr	PM Zheng 04/26/10				4 of 4
				appd	Joseph Hsia 04/26/10				
sheet index	revision sheet								

cage code 22526

Pro/E