

"High Frequency Ceramic Solutions"

2.4 GHz Antenna

P/N 2450AT42D0100

Detail Specification: 5/4/2016

Page 1 of 8

General Specifications

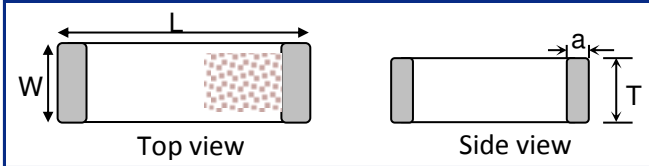
Part Number	2450AT42D0100	Input Power	2W max. (CW)
Frequency (MHz)	2400 - 2500 MHz	Operating Temperature	-40 to +85°C
Peak Gain (XZ-V)	0.5 dBi typ.	Recommended Storage Conditions	+5 to +35°C, 45~75%RH
Average Gain (XZ-V)	-2.0 dBi typ.	Reel Quantity	18 months max.
Return Loss	6 dB min.		1,000

Part Number Explanation

P/N Suffix	Packing Style	Bulk (loose)	Suffix = S	eg. 2450AT42D0100S
		T & R	Suffix = E	eg. 2450AT42D0100E
		100% Tin	Suffix = E or S	eg. 2450AT42D0100(E or S)
	Evaluation Board	2450AT42D0100-EB1SMA		

Mechanical Dimensions

	In	mm
L	0.197 ± 0.008	5.00 ± 0.20
W	0.079 ± 0.008	2.00 ± 0.20
T	0.118 ± +.004/-0.008	3.00 ± +0.1/-0.2
a	0.020 ± 0.012	0.50 ± 0.30



Terminal Configuration

No.	Function
1	Feeding Point
2	NC*



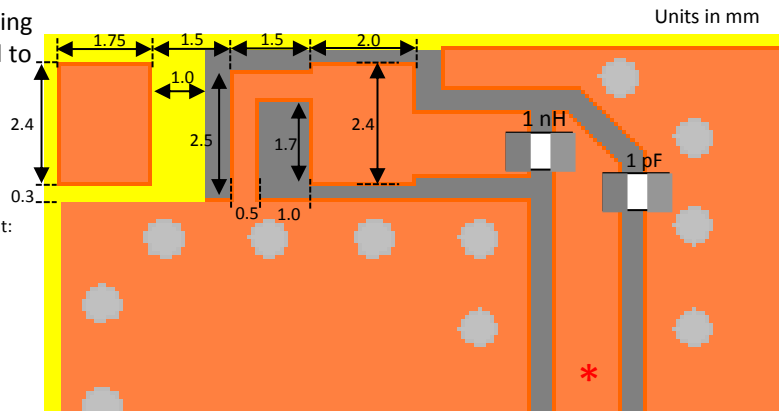
*This terminal must be soldered for anchoring and functionality purposes

Mounting Considerations I (smaller keep out area)

Mount these devices with mark facing up. *Line width should be designed to provide 50 Ω impedance matching characteristics.

Want the layout file of this? Send us a message at: <http://www.johansontechnology.com/ask-a-question>

JTI P/N for Matching Circuit:**
Inductor (1.0nH): L-07C1N0SV6T
Cap (1.0pF): 500R07S1N0BV4T



**matching circuit and component values will depend on PCB layout, thickness, material, etc.



www.johansontechnology.com

4001 Calle Tecate • Camarillo, CA 93012 • TEL 805.389.1166 FAX 805.389.1821

Ver 1.1

2016 Johanson Technology, Inc. All Rights Reserved

"High Frequency Ceramic Solutions"

2.4 GHz Antenna

P/N 2450AT42D0100

Detail Specification: 5/4/2016

Page 2 of 8

Mounting Considerations I: Evaluation Board Dimensions and Keep-out Area

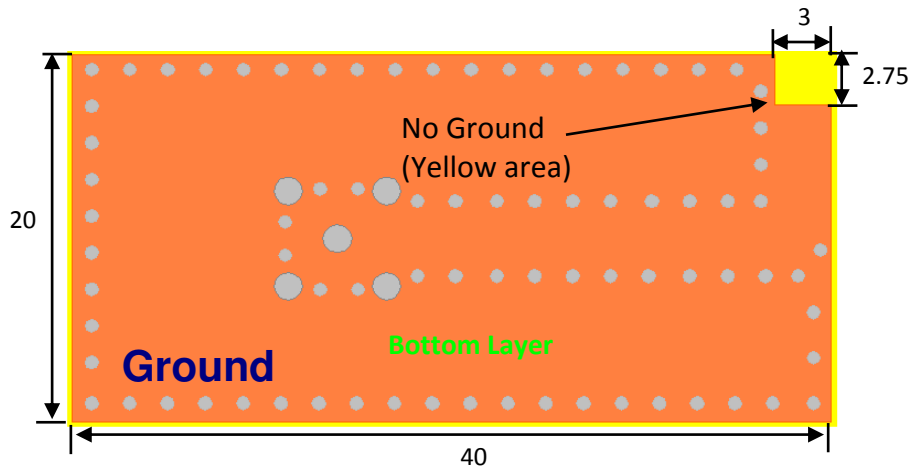
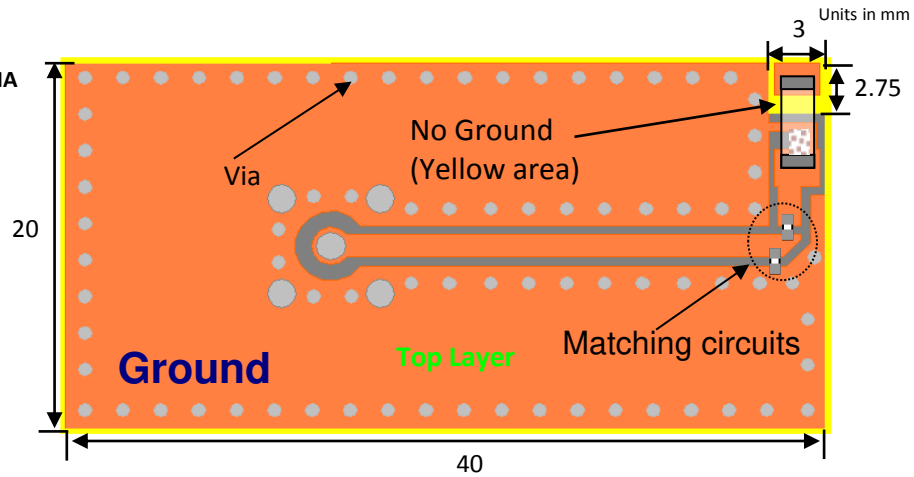
Johanson Test Board

(orderable) p/n:

2450AT42D0100-EB1SMA

50Ω Feed Line (make sure proper calculation are

Yellow area- complete GND and layer clearance free of metal below and above.



****Note 2:** It is recommended that the designer leave available slots for a "pi" (or shunt-series-shunt) network. The antenna matching network values above are used when antenna is mounted on Johanson's evaluation board. The matching values on client's PCB will be different. Go to: www.johansontechnology.com/tuning and see how to obtain the new values. If you need further help, such as needing the layout file of the above, contact our RF Applications Eng. Team at: www.johansontechnology.com/ask-a-question

Johanson Technology, Inc. reserves the right to make design changes without notice. Please confirm the specifications and delivery conditions when placing your order. All sales are subject to Johanson Technology, Inc. terms and conditions.



www.johansontechnology.com

4001 Calle Tecate • Camarillo, CA 93012 • TEL 805.389.1166 FAX 805.389.1821

Ver 1.1

2016 Johanson Technology, Inc. All Rights Reserved

"High Frequency Ceramic Solutions"

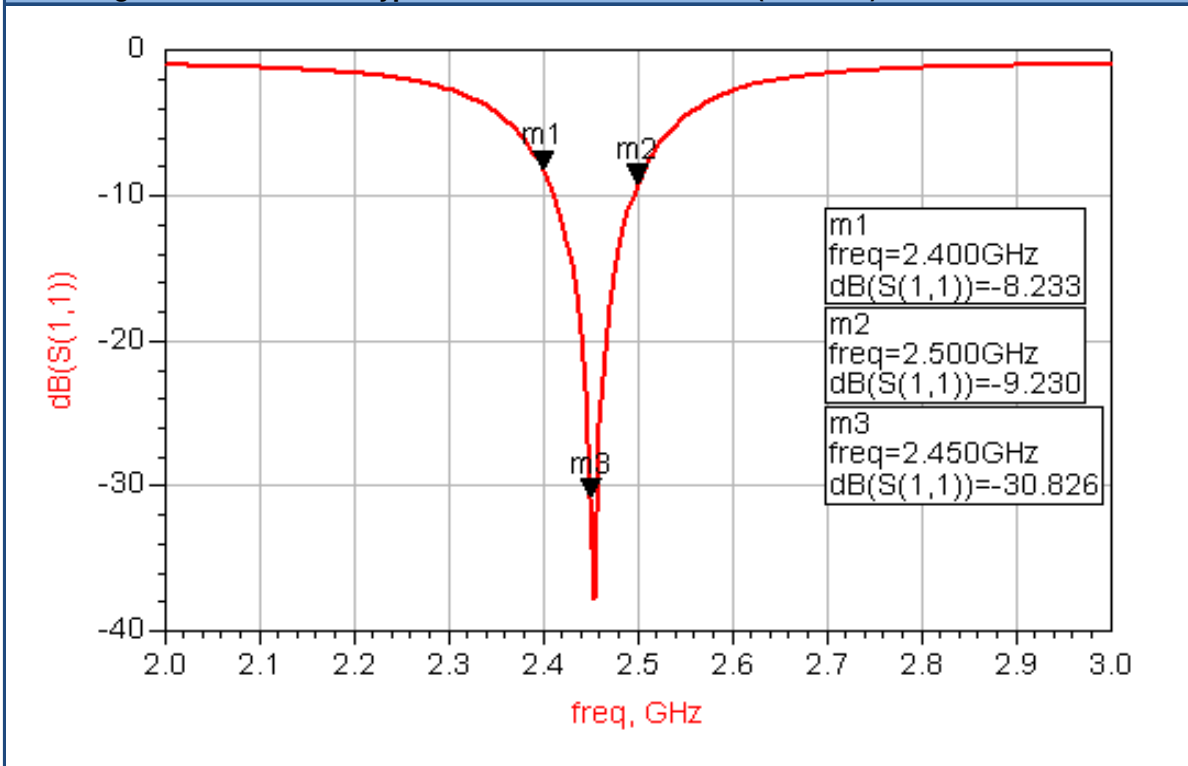
2.4 GHz Antenna

Detail Specification: 5/4/2016

P/N 2450AT42D0100

Page 3 of 8

Mounting Considerations I: Typical Electrical Performance (T = 25°C)



Feel free to contact us if you have any questions regarding the implementation of this antenna in your PCB's layout. We'll be happy to guide you in how to maximize the antenna's performance.

You can contact us here:

www.johansontechnology.com/ask-a-question

Johanson Technology, Inc. reserves the right to make design changes without notice. Please confirm the specifications and delivery conditions when placing your order. All sales are subject to Johanson Technology, Inc. terms and conditions.



www.johansontechnology.com

4001 Calle Tecate • Camarillo, CA 93012 • TEL 805.389.1166 FAX 805.389.1821

Ver 1.1

2016 Johanson Technology, Inc. All Rights Reserved

"High Frequency Ceramic Solutions"

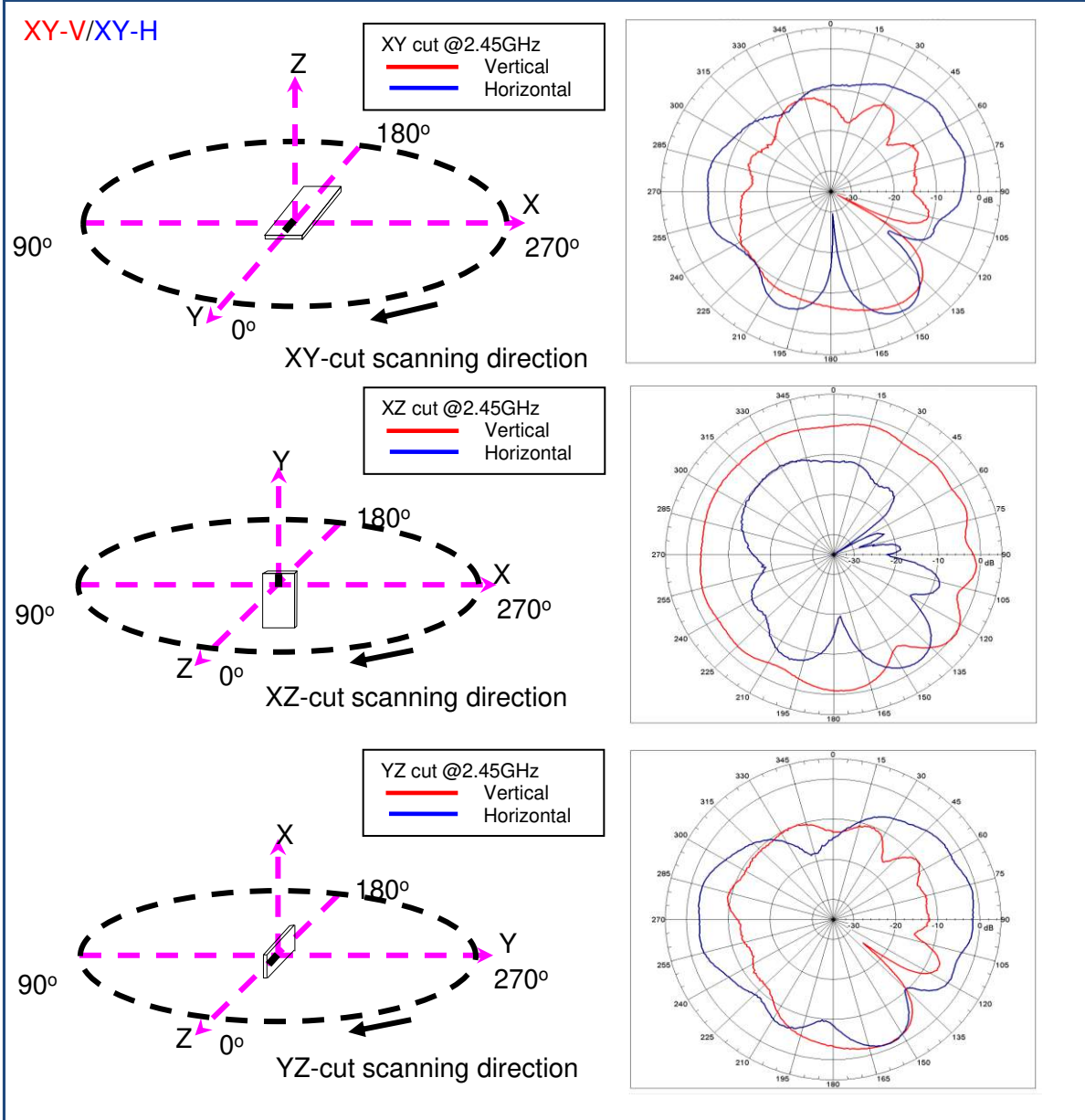
2.4 GHz Antenna

Detail Specification: 5/4/2016

P/N 2450AT42D0100

Page 4 of 8

Mounting Considerations I: Typical EM Radiation Pattern (T = 25°C)



Johanson Technology, Inc. reserves the right to make design changes without notice. Please confirm the specifications and delivery conditions when placing your order. All sales are subject to Johanson Technology, Inc. terms and conditions.



4001 Calle Tecate • Camarillo, CA 93012 • TEL 805.389.1166 FAX 805.389.1821

Ver 1.1

www.johansontechnology.com

2016 Johanson Technology, Inc. All Rights Reserved

"High Frequency Ceramic Solutions"

2.4 GHz Antenna

Detail Specification: 5/4/2016

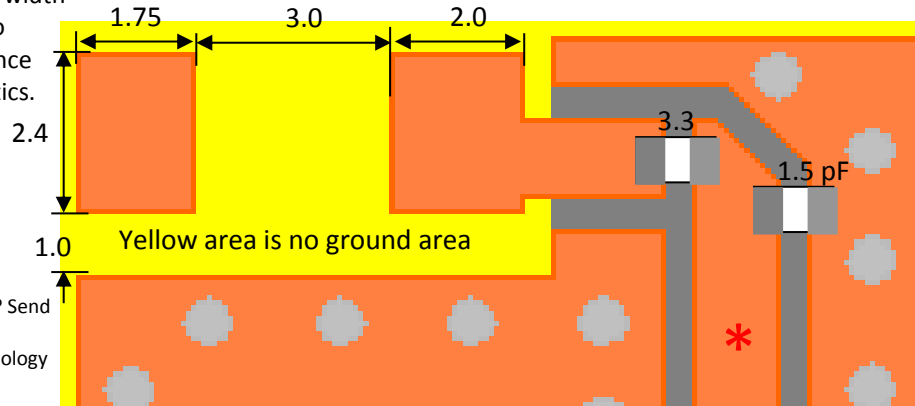
P/N 2450AT42D0100

Page 5 of 8

Mounting Considerations II

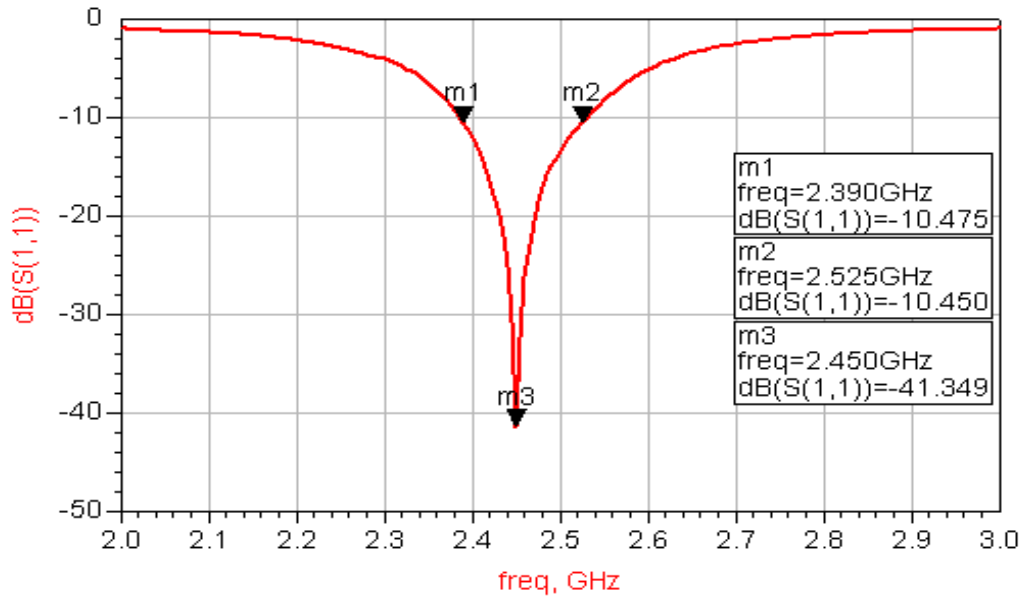
Mount these devices with mark facing up. *Line width should be designed to provide 50 Ω impedance matching characteristics.

Units in mm



Want the layout file of this? Send us a message at:
<http://www.johansontechnology.com/ask-a-question>

Mounting Considerations II: Typical Electrical Performance (T = 25°C)



Johanson Technology, Inc. reserves the right to make design changes without notice. Please confirm the specifications and delivery conditions when placing your order. All sales are subject to Johanson Technology, Inc. terms and conditions.



www.johansontechnology.com

4001 Calle Tecate • Camarillo, CA 93012 • TEL 805.389.1166 FAX 805.389.1821

Ver 1.1

2016 Johanson Technology, Inc. All Rights Reserved

"High Frequency Ceramic Solutions"

2.4 GHz Antenna

P/N 2450AT42D0100

Detail Specification: 5/4/2016

Page 6 of 8

Mounting Considerations II: Evaluation Board Dimensions and Keep-out Area

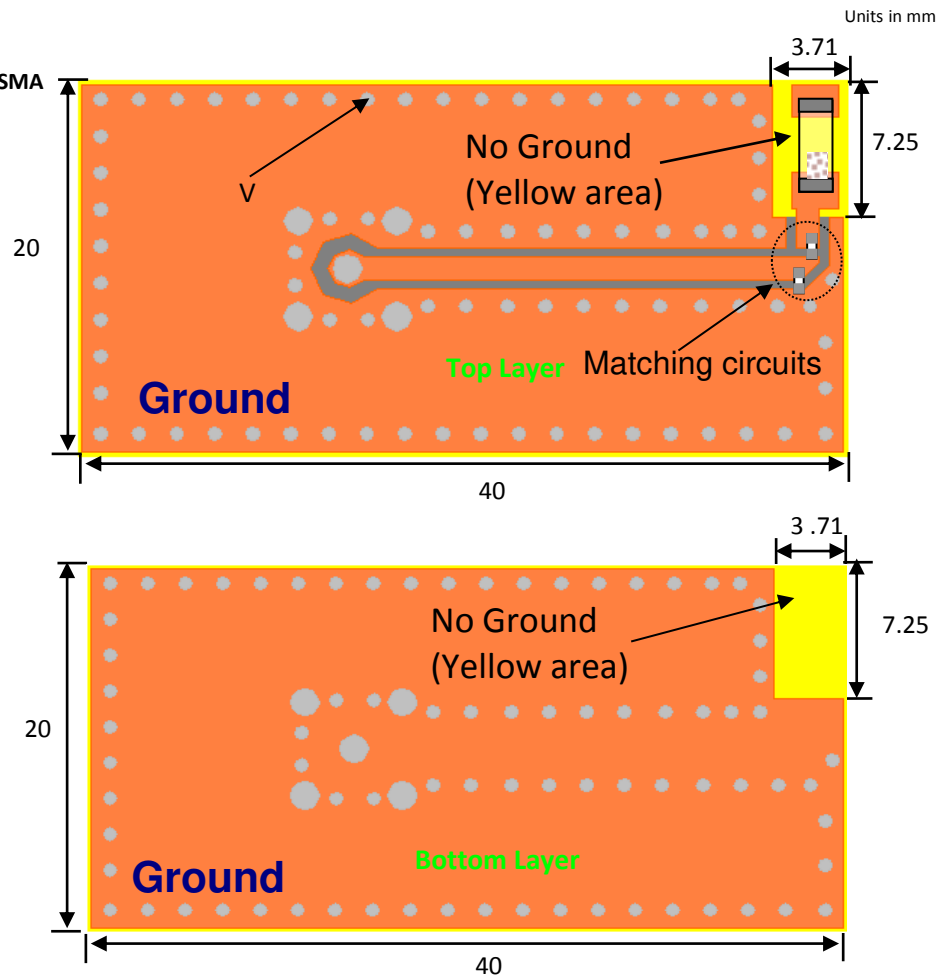
Johanson Test Board

(orderable) p/n:

2450AT42D0100-EB2SMA

50Ω Feed Line (make sure proper calculation are

Yellow area- complete GND and layer clearance free of metal below and above.



****Note 2:** It is recommended that the designer leave available slots for a "pi" (or shunt-series-shunt) network. The antenna matching network values above are used when antenna is mounted on Johanson's evaluation board. The matching values on client's PCB will be different. Go to: www.johansontechnology.com/tuning and see how to obtain the new values. If you need further help, such as needing the layout file of the above, contact our RF Applications Eng. Team at: www.johansontechnology.com/ask-a-question

Johanson Technology, Inc. reserves the right to make design changes without notice. Please confirm the specifications and delivery conditions when placing your order. All sales are subject to Johanson Technology, Inc. terms and conditions.



www.johansontechnology.com

4001 Calle Tecate • Camarillo, CA 93012 • TEL 805.389.1166 FAX 805.389.1821

Ver 1.1

2016 Johanson Technology, Inc. All Rights Reserved

"High Frequency Ceramic Solutions"

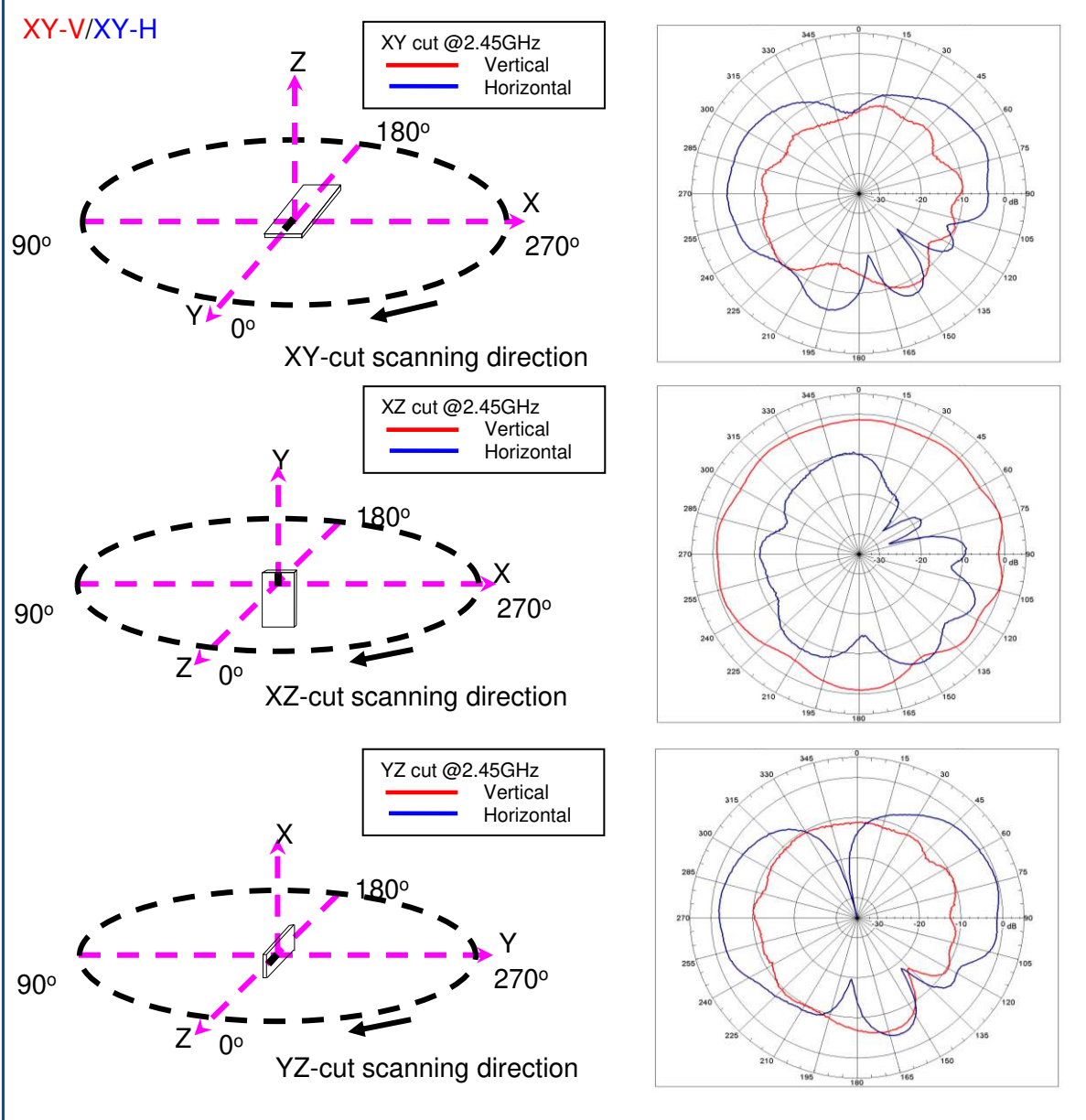
2.4 GHz Antenna

Detail Specification: 5/4/2016

P/N 2450AT42D0100

Page 7 of 8

Mounting Considerations II: Typical EM Radiation Pattern (T = 25°C)



Johanson Technology, Inc. reserves the right to make design changes without notice. Please confirm the specifications and delivery conditions when placing your order. All sales are subject to Johanson Technology, Inc. terms and conditions.



4001 Calle Tecate • Camarillo, CA 93012 • TEL 805.389.1166 FAX 805.389.1821

Ver 1.1

www.johansontechnology.com

2016 Johanson Technology, Inc. All Rights Reserved

"High Frequency Ceramic Solutions"

2.4 GHz Antenna

P/N 2450AT42D0100

Detail Specification: 5/4/2016

Page 8 of 8

More SMD Chip Antennas at:

www.johansontechnology.com/antennas

Packaging information

www.johansontechnology.com/tape-reel-packaging

Soldering Information

www.johansontechnology.com/typical-soldering-profile

Antenna layout and tuning techniques

www.johansontechnology.com/tuning

Antenna layout review, tuning, and characterization services

www.johansontechnology.com/ipc-antenna-services

RoHS Compliance

www.johansontechnology.com/rohs-compliance

MSL Info

www.johansontechnology.com/msl-rating

Johanson Technology, Inc. reserves the right to make design changes without notice. Please confirm the specifications and delivery conditions when placing your order. All sales are subject to Johanson Technology, Inc. terms and conditions.



www.johansontechnology.com

4001 Calle Tecate • Camarillo, CA 93012 • TEL 805.389.1166 FAX 805.389.1821

Ver 1.1

2016 Johanson Technology, Inc. All Rights Reserved