

Getting Started Guide: TMS-FET470A256 IAR Kickstart Development Kit

IMPORTANT NOTICE

Texas Instruments and its subsidiaries (TI) reserve the right to make changes to their products or to discontinue any product or service without notice, and advise customers to obtain the latest version of relevant information to verify, before placing orders, that information being relied on is current and complete. All products are sold subject to the terms and conditions of sale supplied at the time of order acknowledgement, including those pertaining to warranty, patent infringement, and limitation of liability. TI warrants performance of its semiconductor products to the specifications applicable at the time of sale in accordance with TI's standard warranty. Testing and other quality control techniques are utilized to the extent TI deems necessary to support this warranty. Specific testing of all parameters of each device is not necessarily performed, except those mandated by government requirements.

CERTAIN APPLICATIONS USING SEMICONDUCTOR PRODUCTS MAY INVOLVE POTENTIAL RISKS OF DEATH, PERSONAL INJURY, OR SEVERE PROPERTY OR ENVIRONMENTAL DAMAGE ("CRITICAL APPLICATIONS"). TI SEMICONDUCTOR PRODUCTS ARE NOT DESIGNED, AUTHORIZED, OR WARRANTED TO BE SUITABLE FOR USE IN LIFE-SUPPORT DEVICES OR SYSTEMS OR OTHER CRITICAL APPLICATIONS. INCLUSION OF TI PRODUCTS IN SUCH APPLICATIONS IS UNDERSTOOD TO BE FULLY AT THE CUSTOMER'S RISK.

In order to minimize risks associated with the customer's applications, adequate design and operating safeguards must be provided by the customer to minimize inherent or procedural hazards. TI assumes no liability for applications assistance or customer product design. TI does not warrant or represent that any license, either express or implied, is granted under any patent right, copyright, mask work right, or other intellectual property right of TI covering or relating to any combination, machine, or process in which such semiconductor products or services might be or are used. TI's publication of information regarding any third party's products or services does not constitute TI's approval, warranty or endorsement thereof.

Copyright ©2004, Texas Instruments Incorporated

Note: The TMS470R1A256 is functionally compatible with the TMS470R1VF346 and TMS470R1VF348.

1 Getting Started

This chapter provides installation and programming instructions for the starter kit TMS-FET470A256 TMS470 IAR Kickstart Development Kit.

1.1 Kit Contents

- One TMS-FET470R1A256 CD-ROM.
- One TMS-FET470R1A256 IAR Kickstart Development Board
- One TMS-FET470R1A256 IAR J-Link USB-JTAG Debugger

1.2 Installing the Embedded Workbench KickStart-16

Exit all MS-Windows programs prior to loading this software.

The setup program installs all necessary files for running programs on the IAR KickStart Environment. The setup program adds the appropriate program group and icons to the Windows program manager. Included on this CD is a 16 Kbytes code-sized limited Embedded Workbench KickStart C/C++ compiler debugger.

1. To install it select **Install Software** and then select **KickStart Version**. **Note:** If the program does not install automatically click the open file and this will begin the installation. This will start the installer (below).



2. Click **Install the IAR Embedded Workbench** and follow the instructions in the installation application. If the files does not automatically open click open the file. We recommend that you use the default directories, and the **Full** installation option.
3. **Exit** the installer application.
4. **Note:** Run any update after installing the workbench.

1.3 Installing IAR J-Link USB to JTAG debugger

Before you start the Embedded Workbench it is a good idea to install the J-Link USB to JTAG debugger.

Note: J-Link is not compatible with Windows 98.

1. Plug the USB cable into the J-Link.
Important: Do not connect the J-Link to the target PCB before this installation procedure is completed!
2. Connect the other end of the USB cable to the USB port on your PC. The green light on the J-Link will start to blink indicating that J-Link has not found a driver.
3. Your PC will search for a driver. This might take a few seconds. When it has located **New Hardware**, it will start the Install wizard.
4. Choose **Install from a specific location**.
5. Click the **Browse** button and browse to the J-Link directory. If you used the default directory they will be at: C:\Program Files\IAR Systems\Embedded Workbench 4.0 Kickstart\ARM\drivers\JLink

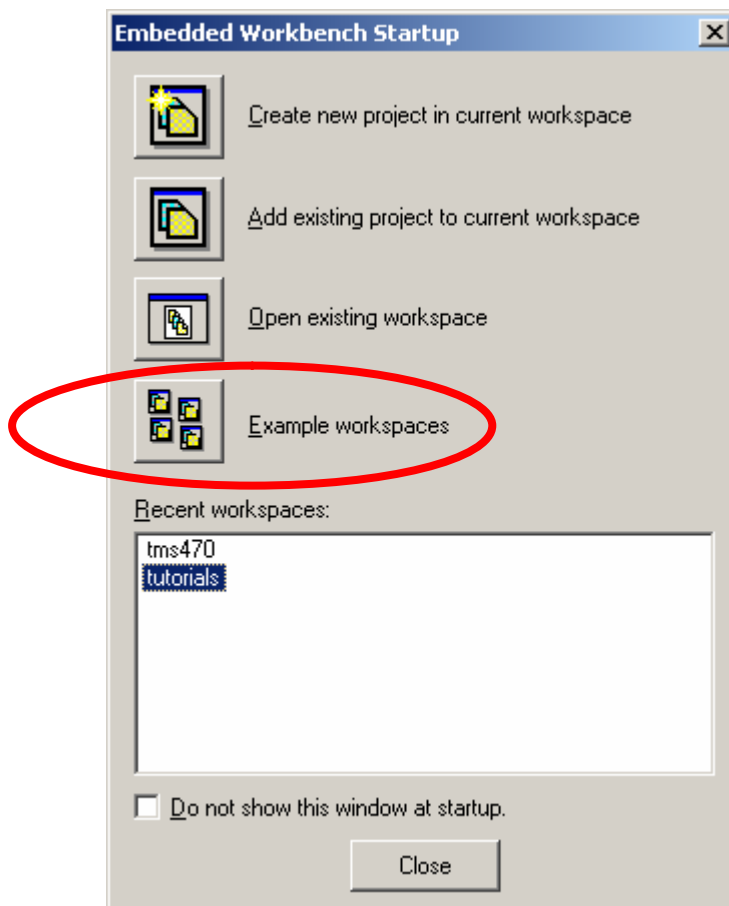
Note that WinXP shows a warning that the driver is not certified by Microsoft. Ignore this warning and click continue anyway.
6. Click **Finish**. Windows will tell you that everything is OK and the green light on J-Link will stop flashing. J-Link is now installed.

1.4 Hardware Installation

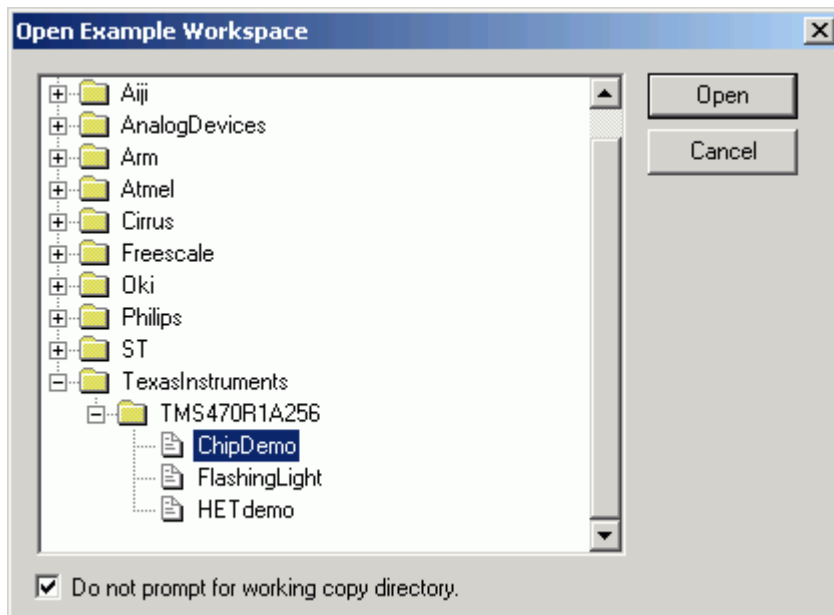
1. With the J-Link Connected to the PC. Connect the 20 conductor ribbon cable between the J-Link and the target EVM.
2. Connect a 6 – 9 VDC power supply to the EVM (not included) with a 5.5mmO.D. x 2.1mm I.D. connector.
3. Verify the jumper configuration with the “**Descriptions of the jumpers on the TMS470R1VF346 board**” document named “**TMS470JumperDescriptions.pdf**” on the supplied CD ROM, in the **Product_Info** directory.
4. Now you are ready to start the workbench and try an example program.

1.5 Starting the Embedded Workbench and running the demo application

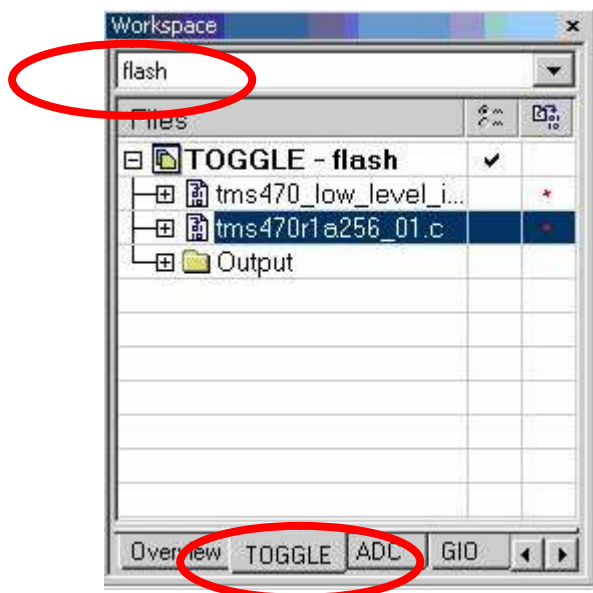
1. From the Start menu choose **Programs>IAR Systems>IAR Embedded Workbench for ARM>IAR Embedded Workbench**. The IAR Embedded Workbench for ARM will start.
2. Choose **Example workspaces**



3. Navigate to the TexasInstruments\TMS470R1A256\ChipDemo example project. Check the “Do not prompt for working copy directory” box and click **Open**.

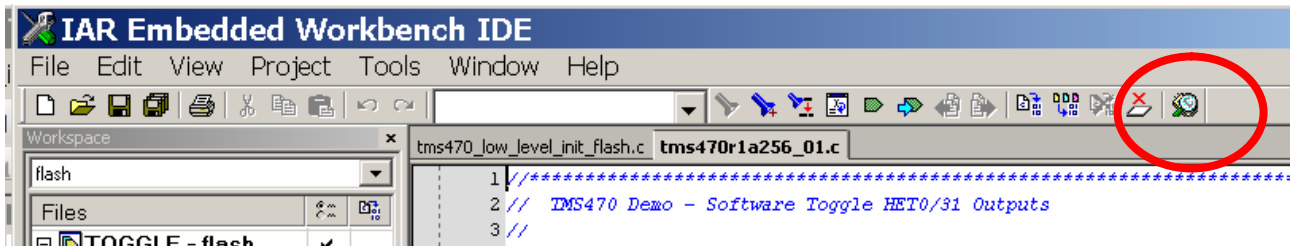


4. In the Workspace window, the select the compilation target. In this case “TOGGLE” and “flash”.

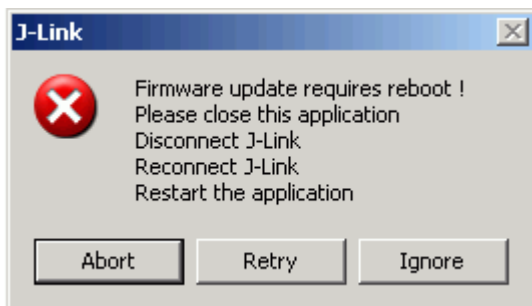


Double clicking on any of the files in the list will open the editor window.

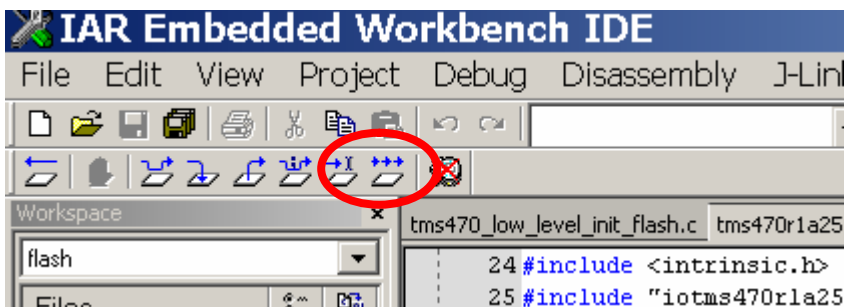
- Click the C-SPY “Debug” button. This will automatically compile the project, if necessary, start C-SPY “Debug” and then download and Flash.



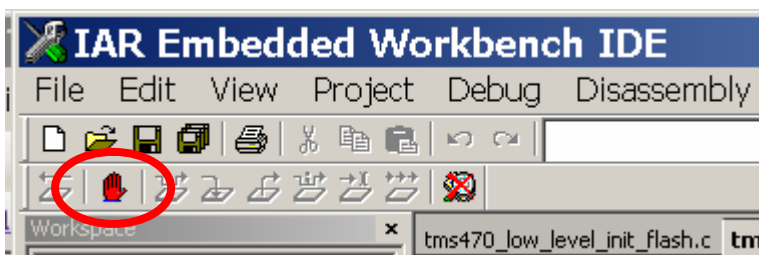
- Should you get the following dialog box after starting a debug session, a J-Link firmware update has been performed. Close this dialog box by clicking **Abort**. Then, disconnect and reconnect the J-Link interface to complete the firmware update process. Now you can start the debug session.



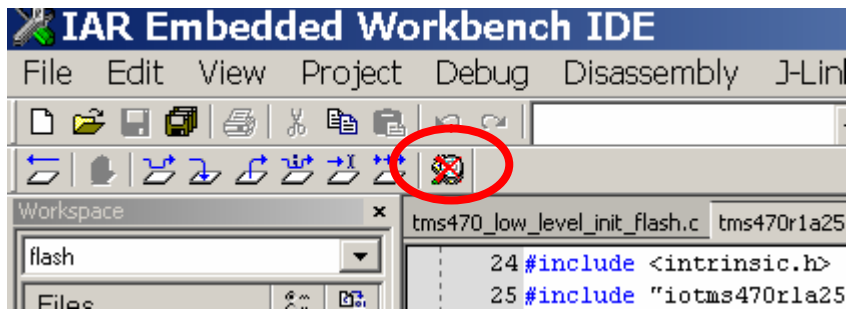
- Click on the GO button to start the program.



- The LEDs 1 and 16 or HET0 and HET31 should now be blinking on the target board.
- To stop the debugger click the BREAK button.



10. To exit the debugger click the EXIT button.



Congratulations.

You have just run your first Embedded Workbench for ARM application and debug session.

1.6 Documentation and Information

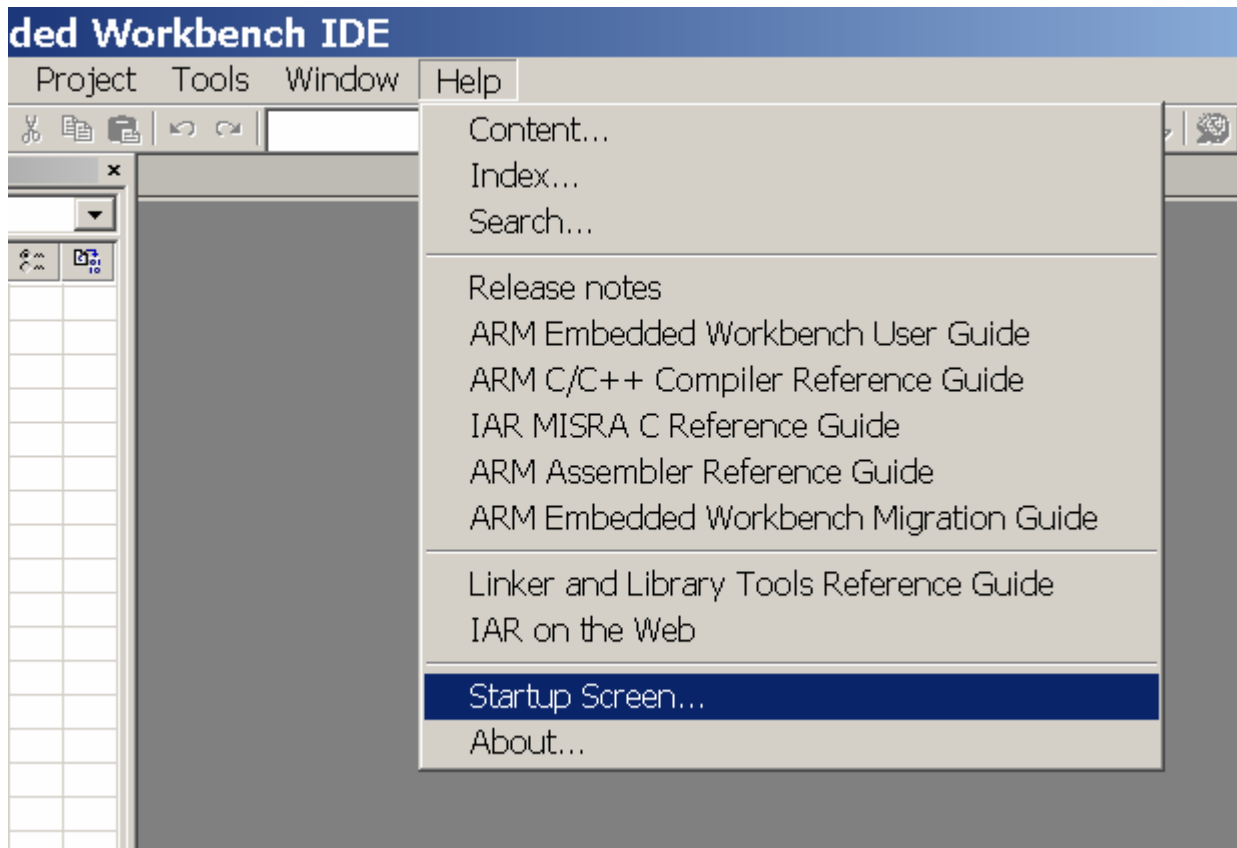
For more information, please refer to the IAR Embedded Workbench help menu.

Comprehensive and up-to-date documentation and information can be found on the Web at <http://www.ti.com/tms470>.

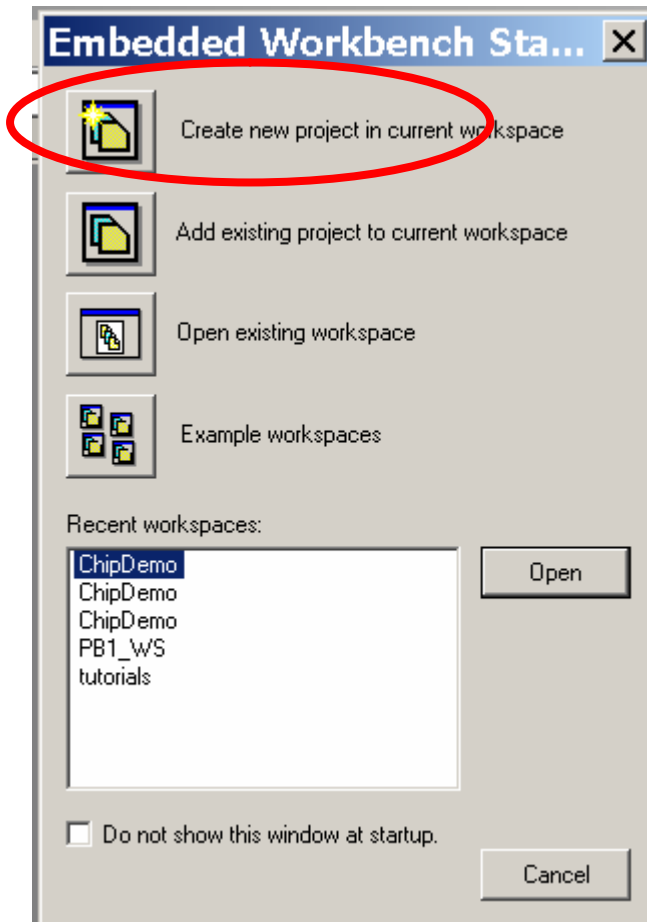
2 Helpful Hints

2.1 Setting up a new workbench with the predefined templates

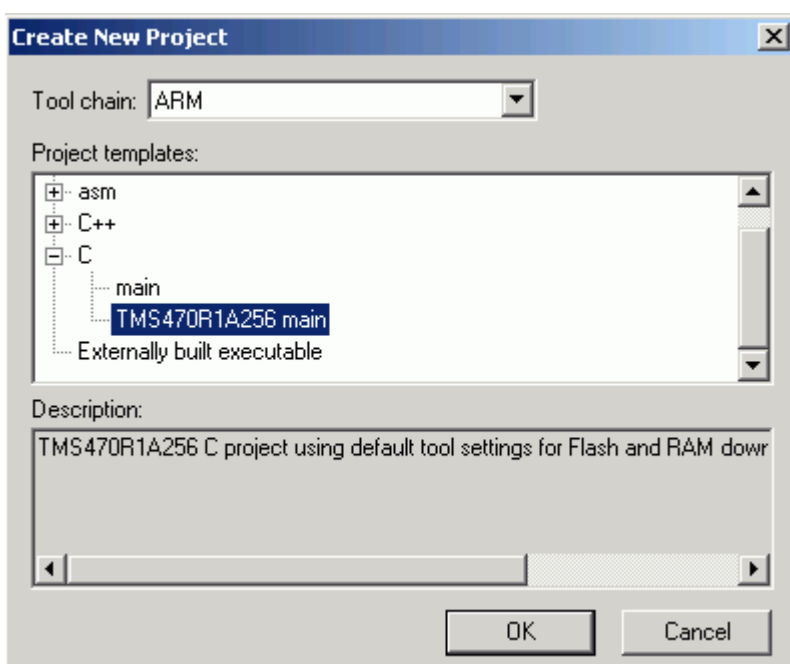
1. From the Start menu choose **Programs>IAR Systems>IAR Embedded Workbench for ARM>IAR Embedded Workbench**. The IAR Embedded Workbench for ARM will start. Then click on **Help>StartupScreen**.



- After selecting the startup screen, select “**Create new project in current workspace**”.



- In the C project template select the **TMS470R1A256 main** template. This offers a complete setup for RAM and FLASH download with all sub settings completed and an empty main.c program, for a quick start. If you get this far and do not see the TMS470R1A256main template , please install the updates.



2.2 Setting up a new workbench from scratch

1. Start a new work space
2. Add a new project. **Project>Create a New Project** Name and save it to you project directory.
3. Add the program files (or create a new program file then add it) **Project>Add a New File.**
4. Example : main.c , tms470_cstartup.s79 and tms470_low_level_init.c
5. Select the project.
6. Select options for the project. **Project>Options.**
7. Select the **General Options** Category and Confirm the **Target Window.**
 - a. Select the **chip variant** in use, **ARM Mode, Big-Endian Mode and 4 bytes.**
8. Select the **Linker Category** and Confirm the Output Window.
 - a. Select **Allow C-SPY specific extra output file**
9. Change to **Extra Output Window** and select **Generate extra output file**
10. Change to **Config Window** and select **Override default** for the **Linker Command file**
11. Select the appropriate CMD file for part, RAM or Flash.
12. Select the **Debugger Category** and Confirm the Setup Window.
 - a. Change **Driver** to **J-Link.**
 - b. Change **Setup Macros** by checking the **Use Macro file** to the appropriate macro (Ram or Flash)
 - c. Change to **Download Window** and select **Verify download** and if you are going to flash the part check the **Flash download**
 - d. Close the window and you are now ready to start.

