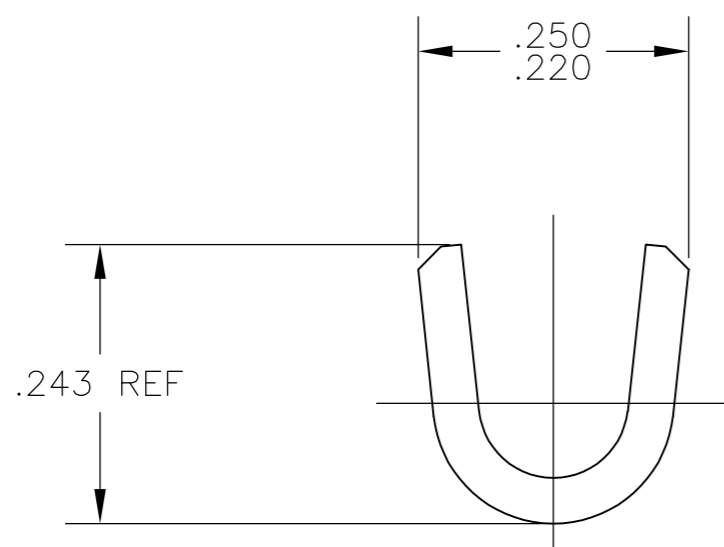
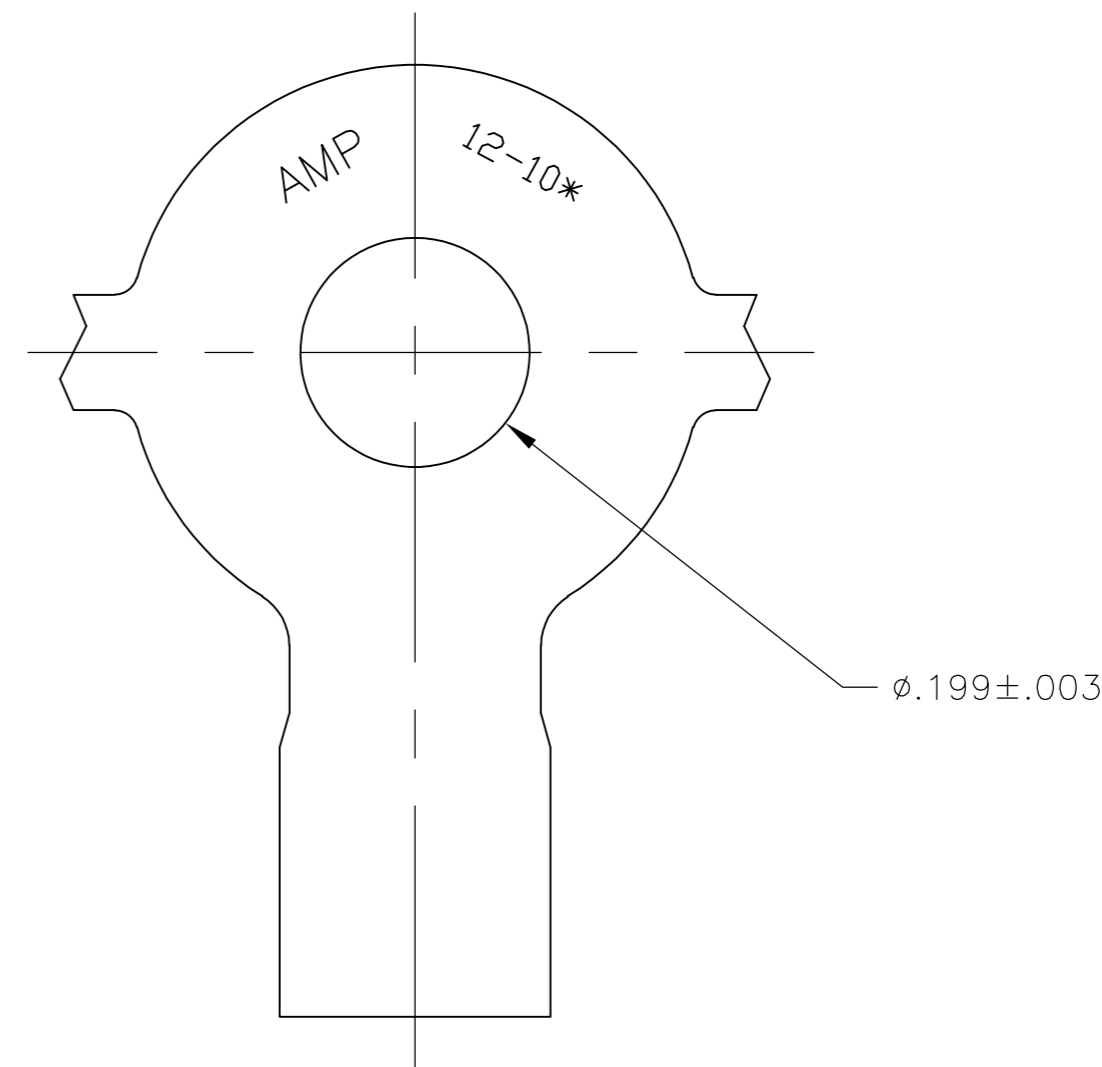
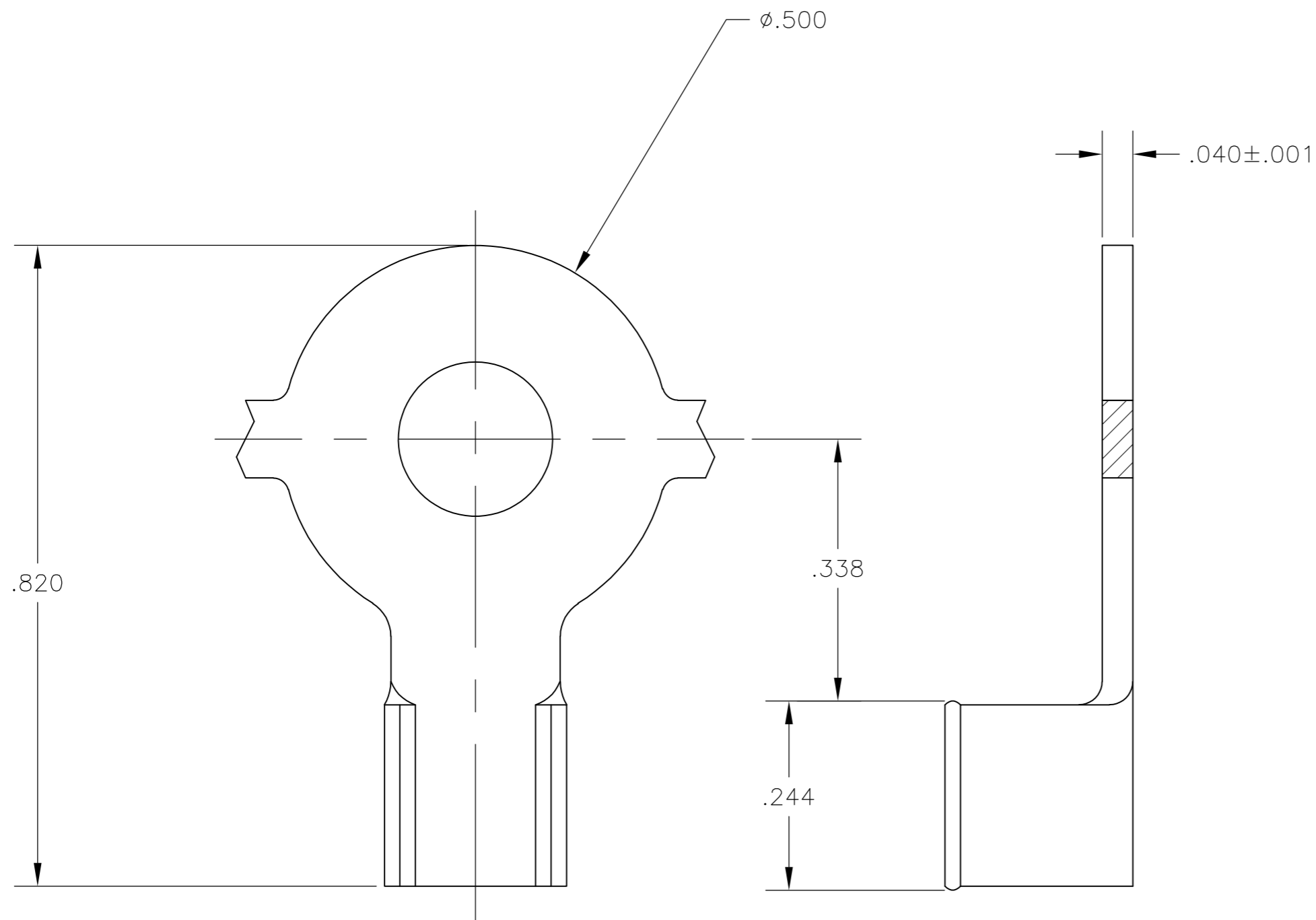


THIS DRAWING IS UNPUBLISHED. RELEASED FOR PUBLICATION  
 © COPYRIGHT BY TYCO ELECTRONICS CORPORATION. ALL RIGHTS RESERVED.

| LOC | DIST | REVISIONS                 |         |     |      |
|-----|------|---------------------------|---------|-----|------|
| P   | LTR  | DESCRIPTION               | DATE    | DWN | APVD |
| AF  | 15   |                           |         |     |      |
|     | K    | REVISED PER ECR-10-006099 | 07JUL10 | HMR | PD   |
|     | K1   | REVISED PER ECR-13-000187 | 09JAN13 | B.P | YH.M |

1. CONTINUOUS STRIP ON REELS.
2. WIRE RANGE: #12-#10 AWG.
3. 42555-3 IS THE REVERSE REEL OF 42555-1.



|          |            |             |   |
|----------|------------|-------------|---|
|          | H00 COPPER | 42555-3     | △ |
| OBSOLETE | 082 BRASS  | 42555-2     |   |
|          | H00 COPPER | 42555-1     |   |
|          | MATERIAL   | PART NUMBER |   |

|  |  |                  |        |               |   |
|--|--|------------------|--------|---------------|---|
| THIS DRAWING IS A CONTROLLED DOCUMENT.   |  | DWN              | B.P    | 08JAN2013     | <br>Tyco Electronics Corporation<br>Harrisburg, Pa 17105-3608 |
| DIMENSIONS: INCHES   |  | CHK              | F.M    | 08JAN2013     |   |
| TOLERANCES UNLESS OTHERWISE SPECIFIED:   |  | APVD             | YH.MAO | 08JAN2013     |   |
| 0 PLC ± -<br>1 PLC ± -<br>2 PLC ± -<br>3 PLC ± .010<br>4 PLC ± -<br>ANGLES ± - |  | PRODUCT SPEC     | NAME   |               |   |
| MATERIAL SEE TABLE   |  | FINISH           | TIN    | WEIGHT        | -   |
|  |  | SCALE            | 6:1    | SHEET         | 1 OF 1  |
|  |  | CUSTOMER DRAWING | SIZE   | A2            | CAGE CODE   |
|  |  |                  | 00779  | DRAWING NO    | C=42555   |
|  |  |                  |        | RESTRICTED TO | -   |
|  |  |                  |        | REV           | K1  |