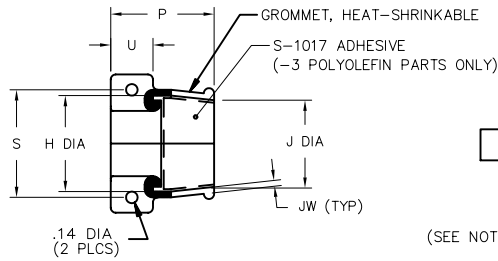
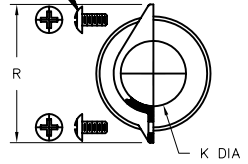


REVISIONS		
LTR	DESCRIPTION	DATE
A	ECO-08-007623	03/26/2008

SCREW 6-32 X .50 LG.
(2 PLCS) (SEE NOTE 3)



(SEE NOTE 4)

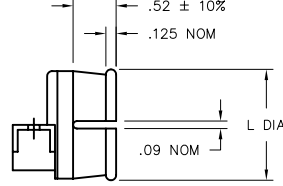
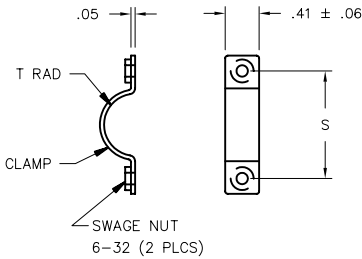
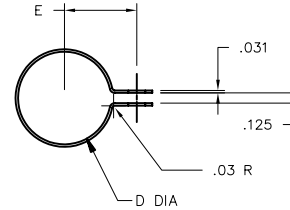


TABLE OF DIMENSIONS

PART NUMBER	FITS CONDUIT SIZE	H		J		K ±12% a & b	L ±10% b	P ±10% b	R ±10% b	S ±10% b	T ±5% b	JW ±20% b	U ±10% b	D REF b	E REF b	AN735 DASH NO.
		+5% -0% a	±5% b	MIN a	MAX b											
203A411	1/2	.51	.51	.53	.47	.33	.86	1.25	1.17	.80	.15	.07	.51	.62	19/32	-10
203A421	5/8	.64	.64	.65	.59	.45	.98	1.25	1.30	.93	.22	.07	.51	.75	21/32	-12
203A431	3/4	.76	.76	.78	.72	.58	1.09	1.25	1.42	1.05	.28	.07	.51	.88	23/32	-14
203A436	7/8	.89	.89	.90	.84	.70	1.23	1.25	1.54	1.17	.34	.07	.51	1.00	13/16	-16
203A442	1	1.01	1.01	1.02	.95	.79	1.34	1.25	1.67	1.30	.38	.07	.51	1.12	7/8	-18
203A452	1 1/4	1.30	1.26	1.30	1.20	1.02	1.59	1.25	1.97	1.60	.51	.07	.51	1.38	1	-22
203A462	1 1/2	1.51	1.51	1.55	1.48	1.29	1.87	1.25	2.17	1.80	.63	.07	.51	1.62	1 1/8	-26

NOTES

- ALL DIMENSIONS ARE IN INCHES.
- DIMENSIONS APPEARING IN TABLE ARE AS FOLLOWS:
a - AS SUPPLIED
b - AFTER UNRESTRICTED RECOVERY
- MATERIAL:
GROMMET: SEE ORDERING INFORMATION.
CLAMP: ALUMINUM ALLOY 6061-T4
SCREW: 6-32 X .50, ROUND HEAD, PHILLIPS, STD. STEEL PER NAS 601-8P, CADMIUM PLATE
- CONDUIT CLAMP:
LOCKNUT, MS21042-03 AND SCREW (10-32 X .50 LG) PER NAS 603 WILL BE SUPPLIED WITH CLAMP.
- FOR SHORTER LENGTH SCREW (10-32 X .25 LG) SEE CUSTOMER DRAWING 203A4XX-X-02.

If this document is printed it becomes uncontrolled. Check for the latest revision

CUSTOMER DRAWING

UNLESS OTHERWISE SPECIFIED DIMENSIONS ARE INCHES. METRIC DIMENSIONS ARE IN BRACKETS.

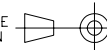
DECIMAL TOLERANCES
.XXX ± 0.005 [0.13 mm]
.XX ± 0.01 [0.25 mm]
.X ± 0.1 [0.50 mm]

ANGLE TOLERANCE
.X ± 1 DEG.

DRAWN DATE
UNGUYEN 03/26/2008

RPN

THIRD ANGLE PROJECTION



Tyco Electronics

Raychem Molded Parts
305 Constitution Dr
Menlo Park, CA 94025

TITLE
END GROMMET,
CONDUIT

SIZE CODE IDENT. NO. DVG. NO.
B 06090 203A4XX-X-03

4

3

2

1

D

D

COMPATIBILITY CHART					
MATERIAL DASH NO.	MATERIAL DESCRIPTION	RT SPEC	COATING SLASH NO.	COATING S NO.	COATING DESCRIPTION
-3	SEMI-RIGID POLYOLEFIN	RT-301	/42	S-1017	ADHESIVE
-12	*VITON, FLEXIBLE	RT-1312	N/A		

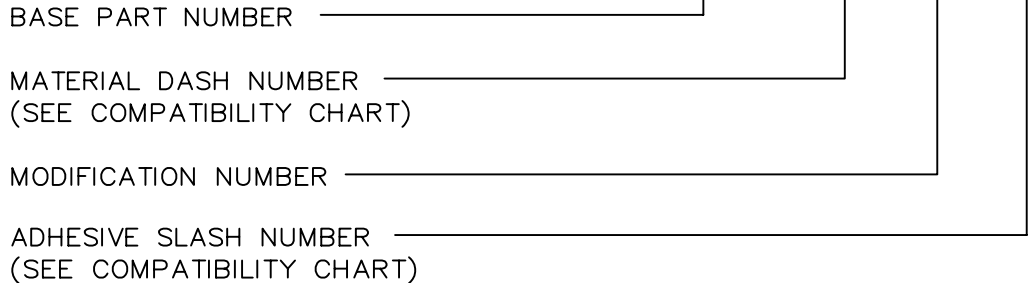
*VITON IS A REGISTERED TRADE MARK OF DUPONT

C

C

ORDERING INFORMATION

203A4XX -XX -03 /XX



B

B

If this document is printed it becomes uncontrolled. Check for the latest revision

CUSTOMER DRAWING

A

A

SIZE	DWG. NO.	REV	DWG. NO.	203A4XX-X-03
B	06090	A		
DO NOT SCALE THIS DRAWING				SHEET 2 OF 2

4

3

2

1