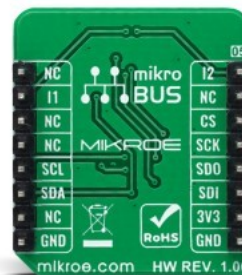
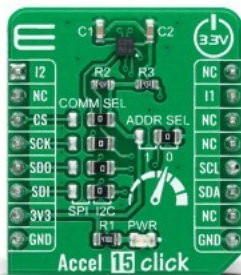


Accel 15 Click



PID: MIKROE-4501

Accel 15 Click is a compact add-on board that contains a longevity acceleration sensor. This board features the [BMA490L](#), a high-performance 16-bit digital triaxial acceleration sensor with extended availability of up to ten years from [Bosch Sensortec](#). It allows selectable full-scale acceleration measurements in ranges of $\pm 2g$, $\pm 4g$, $\pm 8g$, and $\pm 16g$ in three axes with a configurable host interface that supports both I2C and SPI serial communication and with intelligent on-chip motion-triggered interrupt features. Intelligent signal processing and evaluation in the accelerometer ASIC enables advanced gesture recognition for numerous industrial IoT applications where low power consumption is vital. This Click board™ is suitable for home appliances, power tools, and other industrial products whose lifetime is essential.

Accel 15 Click is supported by a [mikroSDK](#) compliant library, which includes functions that simplify software development. This [Click board™](#) comes as a fully tested product, ready to be used on a system equipped with the [mikroBUS™](#) socket.

Mikroe produces entire development toolchains for all major microcontroller architectures.

Committed to excellency, we are dedicated to helping engineers bring the project development up to speed and achieve outstanding results.



ISO 27001: 2013 certification of informational security management system.
 ISO 14001: 2015 certification of environmental management system.
 OHSAS 18001: 2008 certification of occupational health and safety management system.



ISO 9001: 2015 certification of quality management system (QMS).

Specifications

Type	Motion
Applications	Can be used for home appliances, power tools, and other industrial products whose lifetime is essential.
On-board modules	BMA490L - high-performance 16-bit digital triaxial longevity acceleration sensor with extended availability of up to ten years from Bosch Sensortech
Key Features	Ultra-low power consumption, high performance, programmable functionality, on-chip interrupt features, adjustable bandwidth, optimized for industrial applications, and more
Interface	I2C,SPI
ClickID	No
Compatibility	mikroBUS
Click board size	S (28.6 x 25.4 mm)
Input Voltage	3.3V

Resources

[mikroBUS™](#)

[mikroSDK](#)

[Click board™ Catalog](#)

[Click boards™](#)

Downloads

[Accel 15 click 2D and 3D files](#)

[BMA490L datasheet](#)

[Accel 15 click schematic](#)

[Accel 15 click example on Libstock](#)

Mikroe produces entire development toolchains for all major microcontroller architectures.

Committed to excellency, we are dedicated to helping engineers bring the project development up to speed and achieve outstanding results.



ISO 27001: 2013 certification of informational security management system.
 ISO 14001: 2015 certification of environmental management system.
 OHSAS 18001: 2008 certification of occupational health and safety management system.



ISO 9001: 2015 certification of quality management system (QMS).