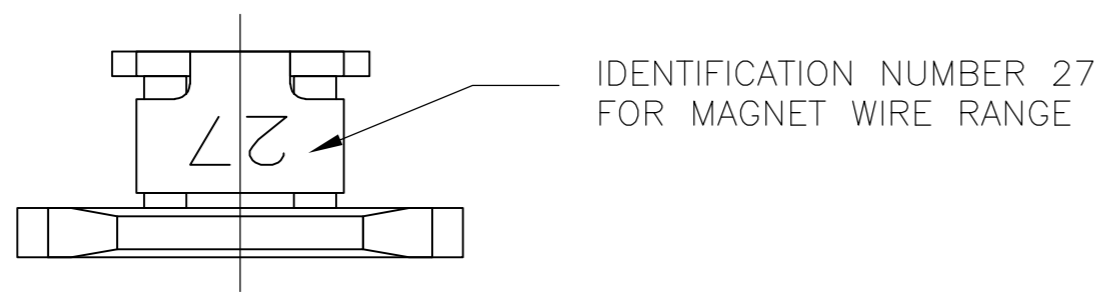
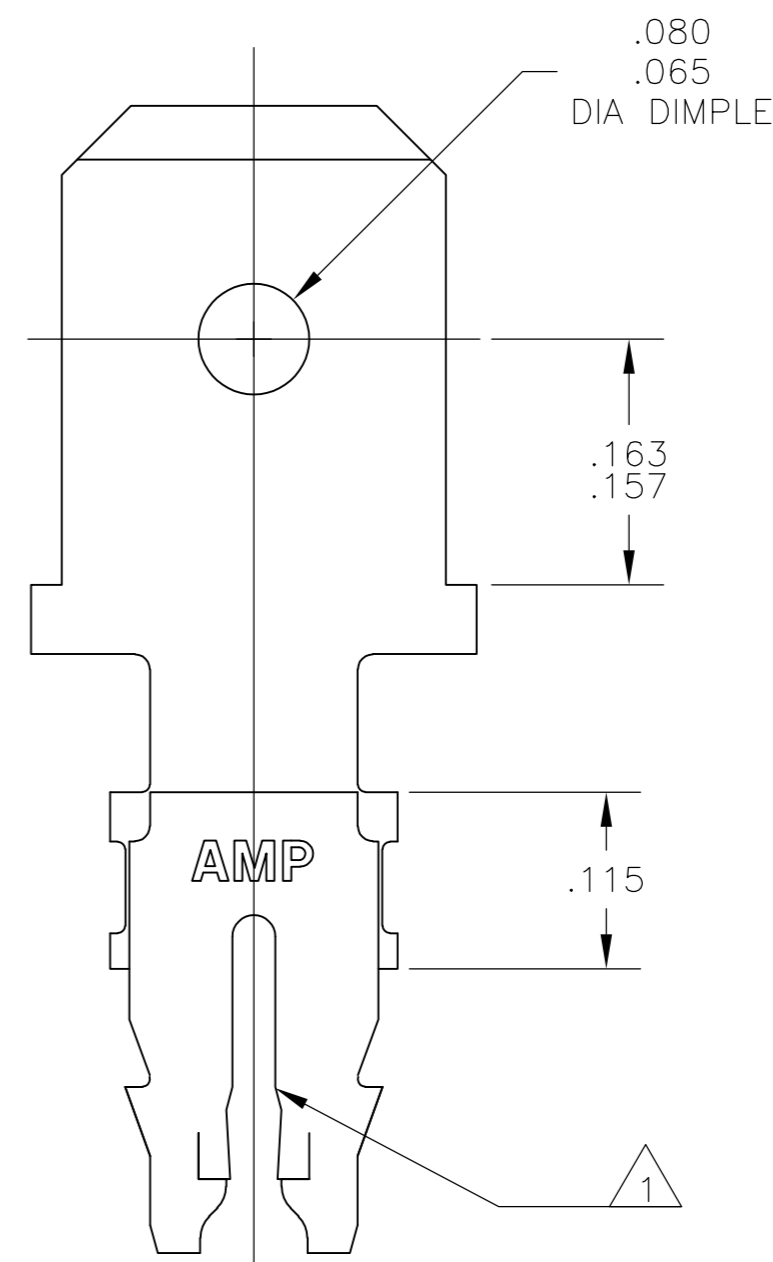
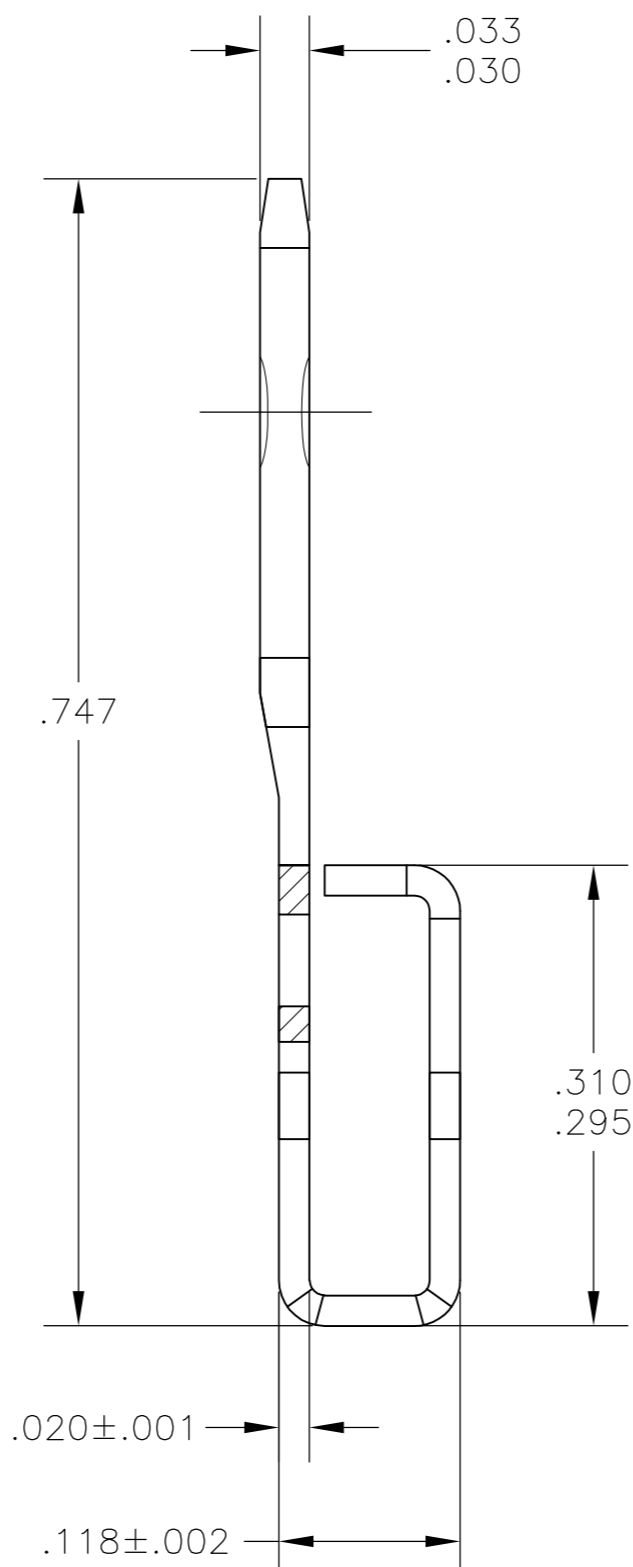
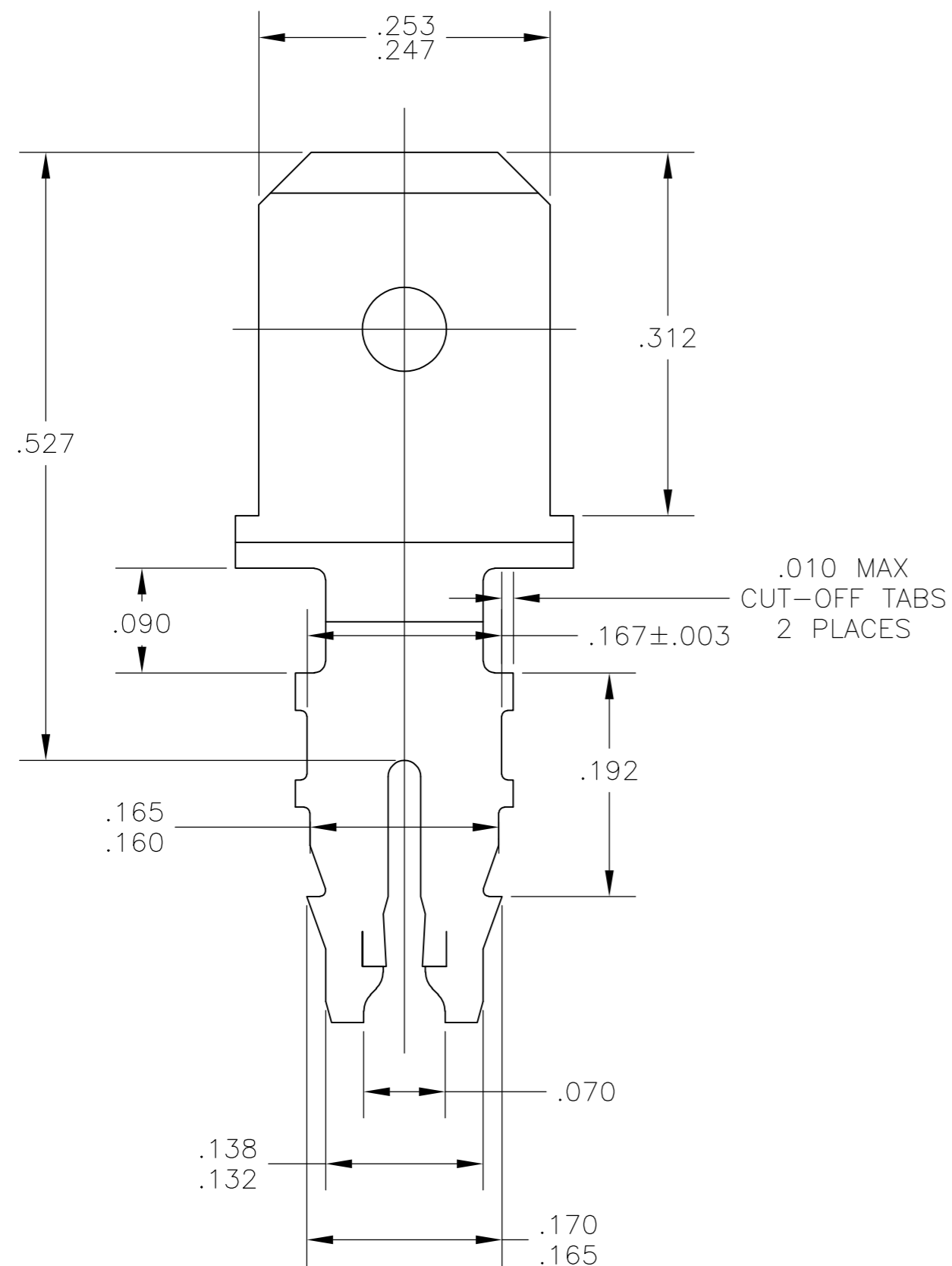


THIS DRAWING IS UNPUBLISHED. RELEASED FOR PUBLICATION
 © COPYRIGHT BY TYCO ELECTRONICS CORPORATION. ALL INTERNATIONAL RIGHTS RESERVED.

| LOC | DIST | REVISIONS | | | |
|-----|------|-------------|---------------------------|---------|--------|
| P | LTR | DESCRIPTION | DATE | DWN | APVD |
| AF | 50 | A1 | REVISED PER ECR-09-014283 | 26JUN09 | HMR KR |



- 1 SLOT TERMINATES A SINGLE OR DOUBLE MAGNET WIRE OF THE SAME SIZE AND TYPE. COPPER RANGE: #19-#17 AWG
- 2 AFTER INSERTION INTO PLASTIC HOLDER TAB PORTION MUST BE BENT OVER 45° TO 90° OR POTTED-IN TO PREVENT PULL-OUT WHEN MATING RECEPTACLE IS DISCONNECTED.
- 3 SPECIAL CAVITY ANVIL HEIGHT REQUIRED .130±.003 REF APPLICATION SPEC 114-2046, SEC. 3.2, NOTE 7
- 4 .000080 - .000250 TIN PLATE



1742490-1
PART NUMBER

| | | | | |
|--|--|------------------------------------|---|--------------------|
| THIS DRAWING IS A CONTROLLED DOCUMENT. | | DWN M.S. FEHER 23OCT2006 | Tyco Electronics Corporation Harrisburg, PA 17105-3608 | |
| DIMENSIONS: INCHES | | CHK K.A. RANDOLPH 23OCT2006 | NAME K.A. RANDOLPH | |
| TOLERANCES UNLESS OTHERWISE SPECIFIED: 0 PLC ± - 1 PLC ± - 2 PLC ± - 3 PLC ± .010 4 PLC ± - ANGLES ± - | | APVD K.A. RANDOLPH 23OCT2006 | PRODUCT SPEC 108-2012 | |
| MATERIAL 4M PRE-MILLED BRASS | | FINISH 4 | APPLICATION SPEC 114-2046 3 | RESTRICTED TO - |
| CUSTOMER DRAWING | | WEIGHT - | SIZE A2 | CAGE CODE 00779 |
| | | SCALE 10:1 | DRAWING NO 1742490 | SHEET 1 of 1 |
| | | | REV A1 | |