



## Series 34A: Miniature Toggle Switches

### SERIES 34A Miniature Toggle Switches

#### FEATURES

- Save Space and Weight
- SPDT, DPDT, 3PDT, and 4DPT Circuitry
- Choice of Actuators, Bushings and Terminations
- UL Recognized

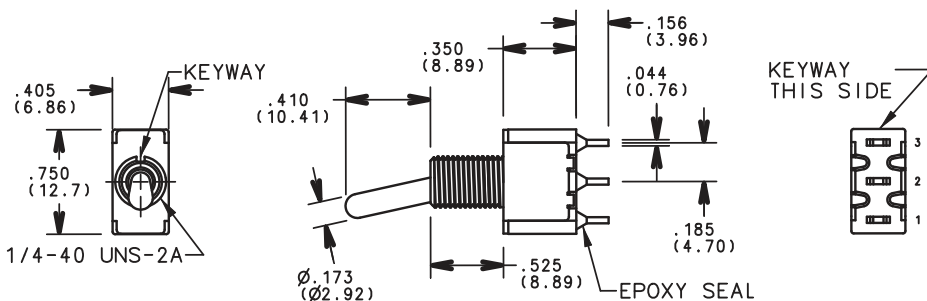


#### MODELS in inches (and millimeters)

##### SPDT

MODEL NO.	SWITCH POSITION		
SP1	ON	NONE	ON
SP2	ON	NONE	(ON)
SP3	ON	OFF	ON
SP4	(ON)	OFF	(ON)
SP5	ON	OFF	(ON)
TERM. COMM.	2-3	OPEN	2-1

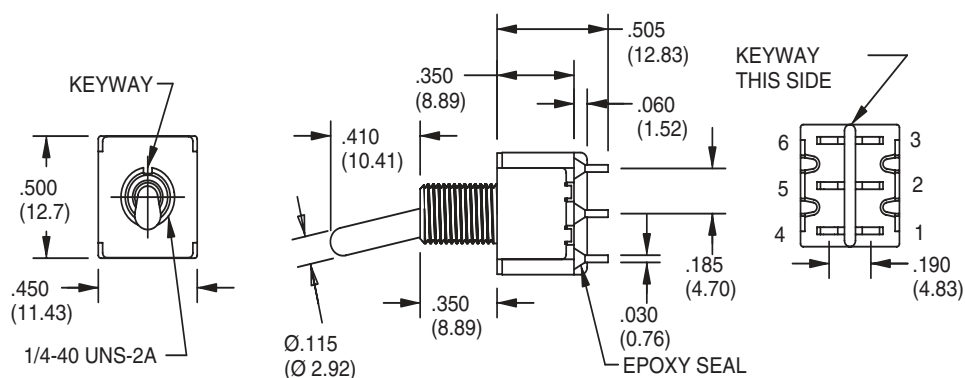
( )=MOMENTARY



##### DPDT

MODEL NO.	SWITCH POSITION		
DP1	ON	NONE	ON
DP2	ON	NONE	(ON)
DP3	ON	OFF	ON
DP4	(ON)	OFF	(ON)
DP5	ON	OFF	(ON)
TERM. COMM.	2-3, 5-6	OPEN	2-1, 5-4

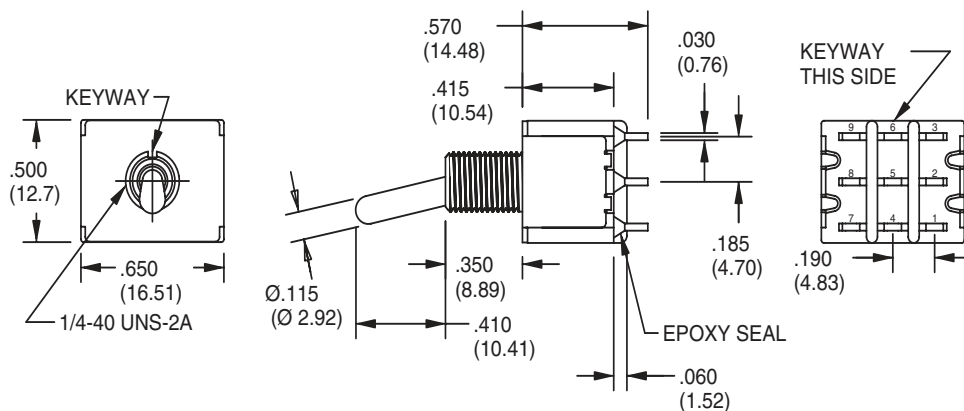
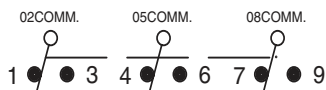
( )=MOMENTARY



##### 3PDT

MODEL NO.	SWITCH POSITION		
3P1	ON	NONE	ON
3P2	ON	NONE	(ON)
3P3	ON	OFF	ON
3P4	(ON)	OFF	(ON)
3P5	ON	OFF	(ON)
TERM. COMM.	2-3,5-6, 8-9	OPEN	2-1,5-4, 8-7

( )=MOMENTARY



**MODELS** in inches (and millimeters)

**4PDT**

MODEL NO.	SWITCH POSITION		
	ON	NONE	ON
4P1	ON	NONE	ON
4P2	ON	NONE	(ON)
4P3	ON	OFF	ON
4P4	(ON)	OFF	(ON)
4P5	ON	OFF	(ON)
TERM. COMM.	2-3,5-6 8-9,11-12	OPEN	2-1,5-4 8-7,11-10

( )=MOMENTARY

02COMM. 05COMM. 08COMM. 011COMM.

SCHEMATIC

SCALE:1.5:1

KEYWAY THIS SIDE

EPOXY SEAL

1/4-40 UNS-2A

Ø.115 (Ø 2.92)

.570 (14.48)

.415 (10.54)

.030 (0.76)

.185 (4.70)

.350 (8.89)

.410 (10.41)

.060 (1.52)

.500 (12.7)

.850 (21.59)

.190 (4.83)

**ACTUATOR OPTIONS** in inches (and millimeters)

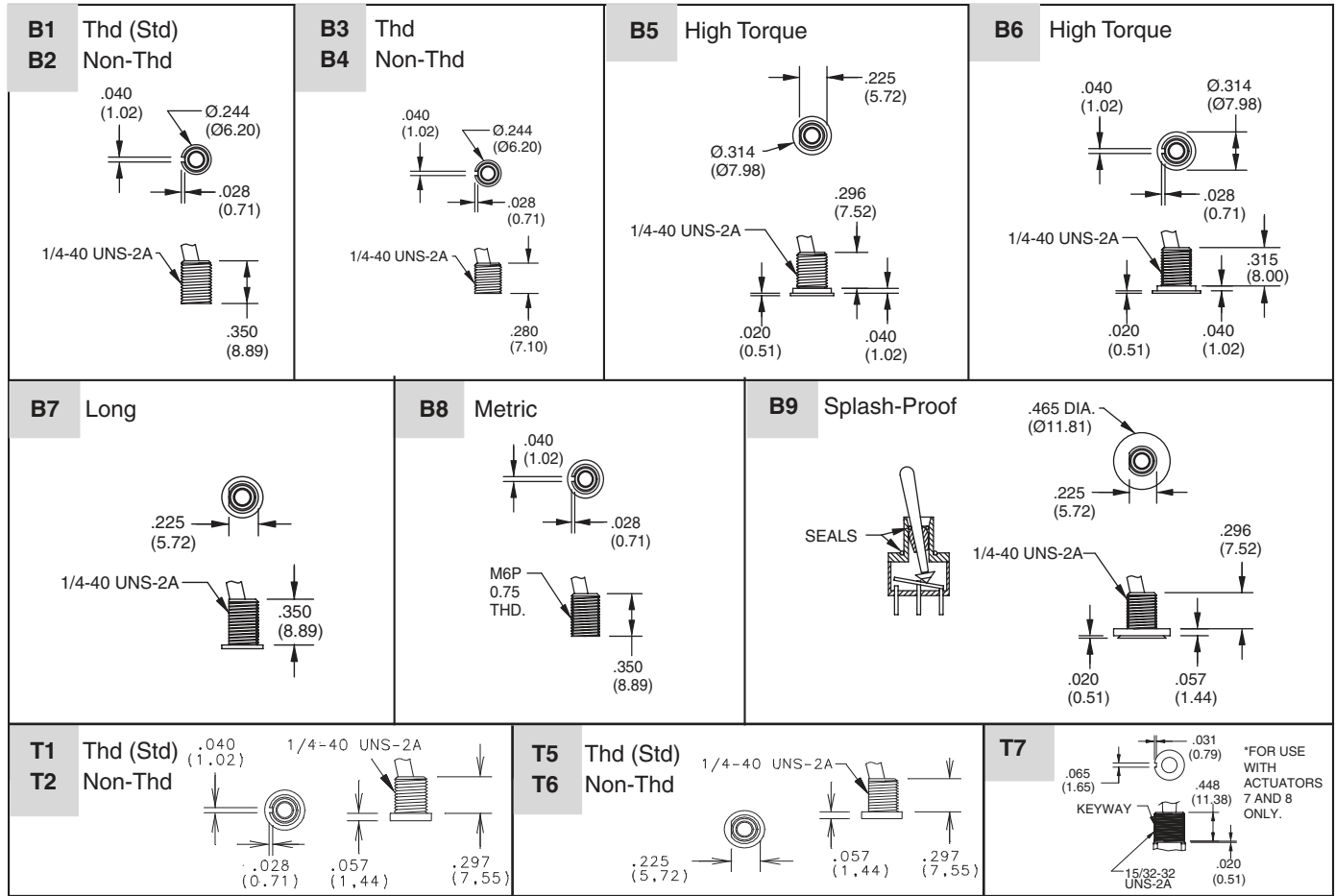
<p><b>1</b> Std</p> <p>.115 DIA. (Ø3.01)</p> <p>.410 (10.41)</p>	<p><b>2</b></p> <p>.107 DIA. (Ø2.71)</p> <p>.200 (5.08)</p>	<p><b>3</b></p> <p>.134 DIA. (Ø3.40)</p> <p>.550 (13.97)</p>	<p><b>4</b></p> <p>.131 DIA. (Ø3.32)</p> <p>.640 (16.26)</p>	<p><b>5</b></p> <p>.131 (3.32)</p> <p>.840 (21.32)</p>
<p><b>6</b></p> <p>.200 DIA. (Ø5.08)</p> <p>.450 (11.43)</p> <p>Use with Bushing Options T1, T2, T5 and T6 only.</p>	<p><b>7</b></p> <p>.240 DIA. (Ø6.09)</p> <p>.487 (12.37)</p> <p>.465 (11.80)</p> <p>15/32-32NS</p> <p>KEYWAY</p> <p>Use T7 Bushing Option only.</p>	<p><b>8</b></p> <p>.240 DIA. (Ø6.09)</p> <p>.687 (17.45)</p> <p>.465 (11.80)</p> <p>15/32-32NS</p> <p>KEYWAY</p> <p>Use T7 Bushing Option only.</p>	<p><b>9</b> Nylon Black</p> <p>Ø.129 (Ø3.28)</p> <p>.645 (16.38)</p> <p>.840 (21.34)</p>	<p><b>L</b> THD. (STD.) <b>N</b> NON-THD</p> <p>Ø.214 (Ø5.44)</p> <p>.579 (14.73) LOCKED</p> <p>.315 (8.00)</p> <p>640 (16.26) UNLOCKED</p> <p>L-Style</p> <p>Use B1 &amp; B2 bushing option only. Bushing dimension is .315</p>

Actuators 1-5 shown with standard B1 bushing. Add .070 (1.78) for B3, subtract .020 (0.51) for B6 bushing.

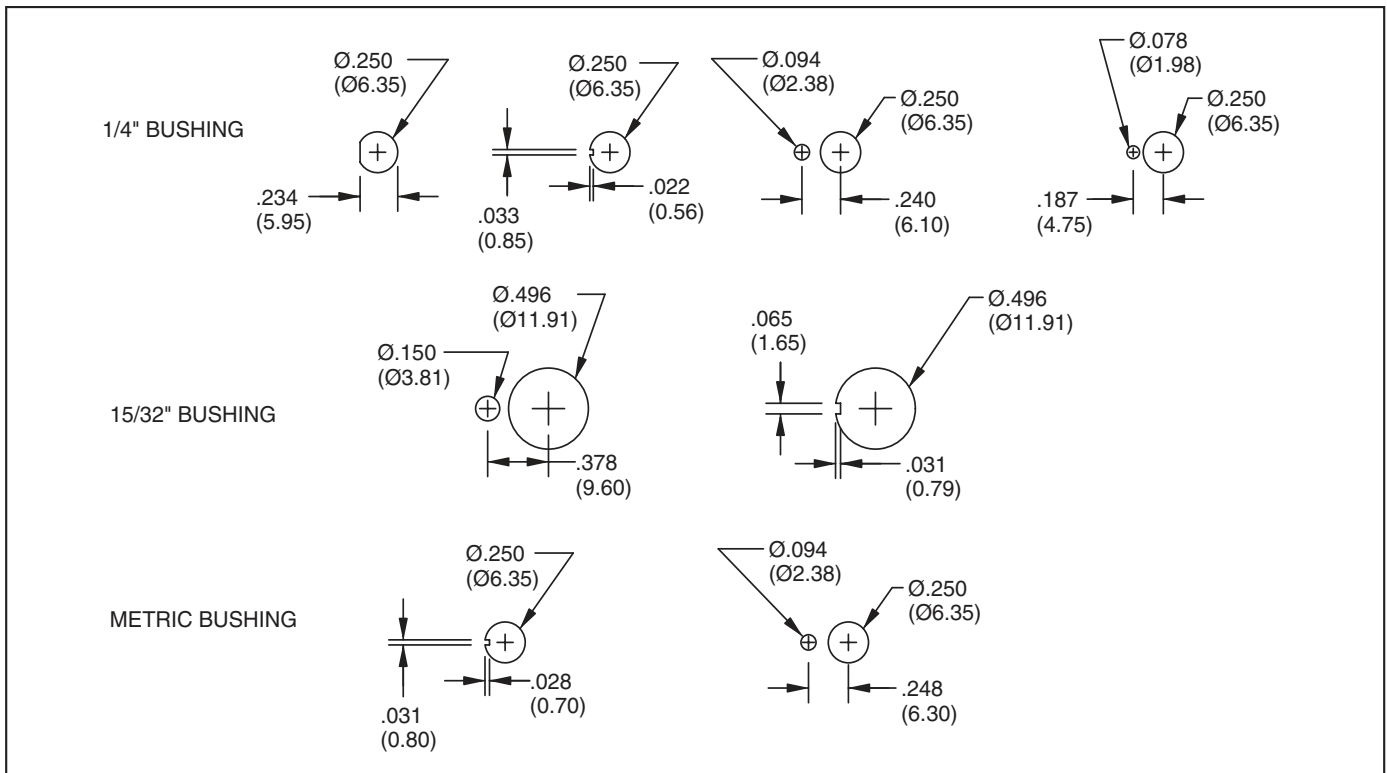


## Series 34A: Miniature Toggle Switches

### BUSHING OPTIONS in inches (and millimeters)



### PANEL MOUNTING in inches (and millimeters)



**TERMINATION OPTIONS** in inches (and millimeters)

M1	M2	M3	WX										
<p><b>Solder Lug (Std)</b></p> <p>THK. .030 (0.76)</p>	<p><b>P.C. Mount</b></p> <p>THK. .030 (0.76)</p>	<p><b>P.C. Mount, Quick Connect</b></p> <p>.030 (0.76) THK.</p>	<p><b>WIRE WRAP</b></p> <table border="1"> <thead> <tr> <th>OPTION CODE</th> <th>DIM."A"</th> </tr> </thead> <tbody> <tr> <td>W1</td> <td>.750(19.05)</td> </tr> <tr> <td>W2</td> <td>.964(24.48)</td> </tr> <tr> <td>W3</td> <td>.425(10.80)</td> </tr> <tr> <td>W4</td> <td>1.062(26.97)</td> </tr> </tbody> </table>	OPTION CODE	DIM."A"	W1	.750(19.05)	W2	.964(24.48)	W3	.425(10.80)	W4	1.062(26.97)
OPTION CODE	DIM."A"												
W1	.750(19.05)												
W2	.964(24.48)												
W3	.425(10.80)												
W4	1.062(26.97)												
<p><b>M6 Right Angle P.C. Mount, Horizontal Actuation</b></p> <p><b>SPDT</b></p> <p><b>DPDT</b></p>	<p><b>M7 Right Angle P.C. Mount, Vertical Actuation</b></p> <p><b>SPDT</b></p> <p><b>DPDT</b></p>												

Toggle Switches

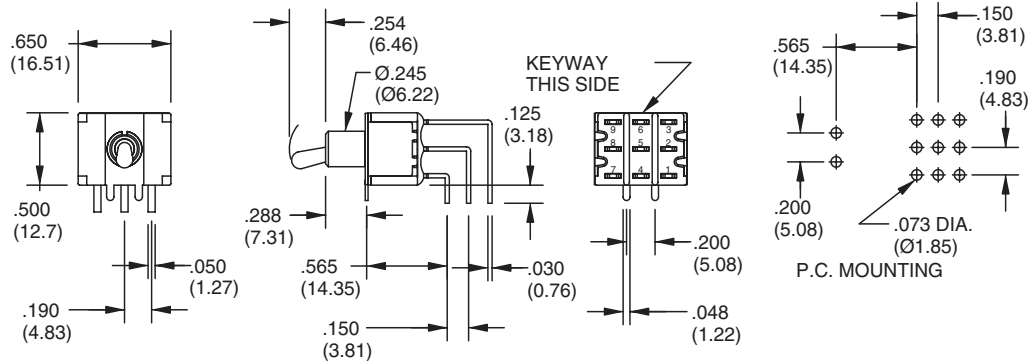


## Series 34A: Miniature Toggle Switches

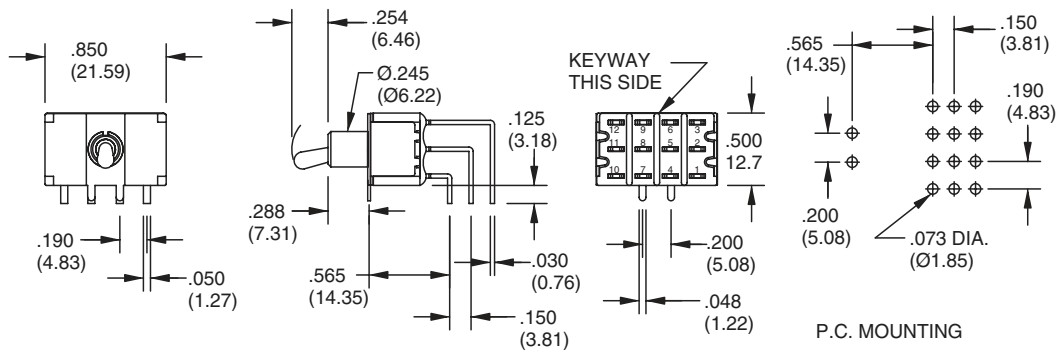
### TERMINATION OPTIONS in inches (and millimeters)

#### M7 Right Angle P.C. Mount, Vertical Actuation

3PDT

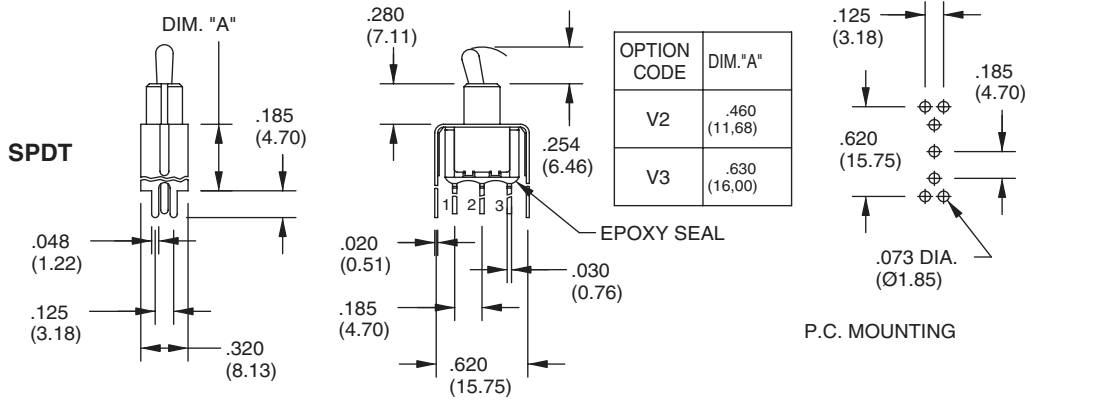


4PDT

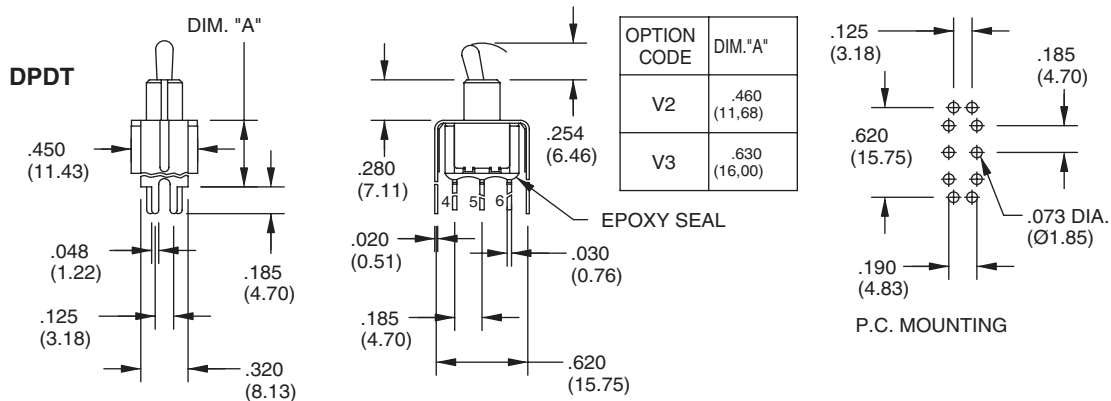


#### V2-V3 Vertical Bracket P.C. Mount

SPDT



DPDT



## SPECIFICATIONS

### RATINGS

**Contact Rating:** Q option - 5A with resistive load @ 125VAC or 28 VDC; 2A with resistive load @ 250 VAC. R option-0.4 VA max @ 20 Vmax (AC or DC)

**Electrical Life:** 40,000 make-and-break cycles at full load

**Contact Resistance:** 10 milliohms max. initial @ 2-4 VDC, 100 mA for both gold & silver contacts

**Insulation Resistance:** 1,000 megaohms minimum

**Dielectric Strength:** 1,000 V RMS @ sea level

**Operating Temperature:** -30°C to 85°C

**UL Recognition:** File number is E35289

### MATERIALS

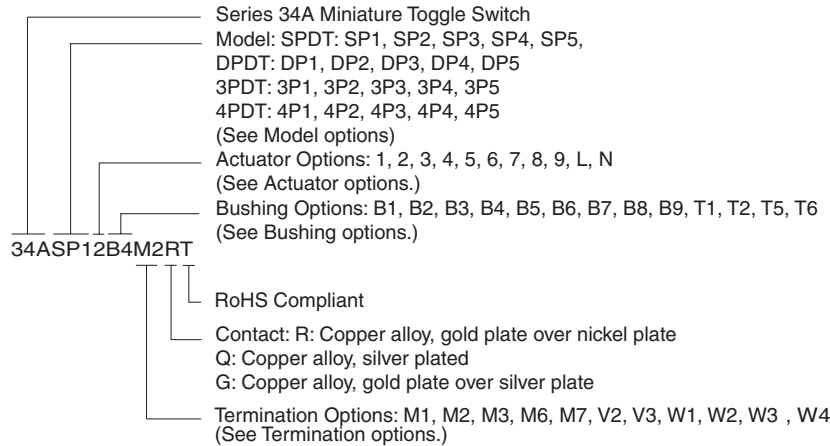
**Case:** Diallyl phthalate (DAP) (UL94V-0)

**Toggle Handle:** Brass, chrome-plated

**Bushing:** Brass, nickle-plated

**Housing:** Stainless steel

## ORDERING INFORMATION



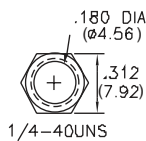
Available from your local Grayhill Component Distributor.

For prices and discounts, contact a local Sales Office, an authorized local Distributor or Grayhill.

## HARDWARE in inches (and millimeters)

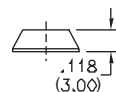
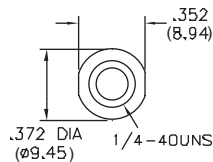
### NUTS

Series 34A (Std)



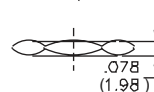
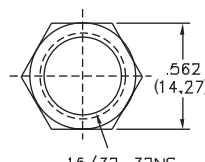
HDW2

Dress Nut



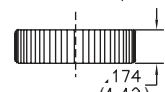
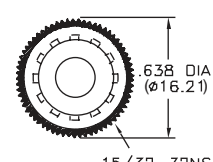
HDW3

For Actuator Options 7, 8 (Std)



HDW4

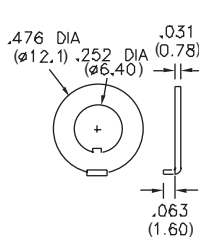
Knurled Nut (Sealed)



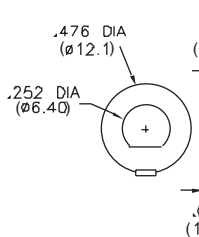
HDW5

### LOCKING RINGS

Series 34A (Std)

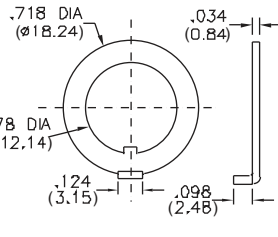


HDW15



HDW16

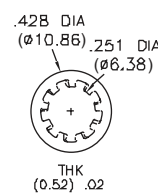
For Actuator Options 7, 8



HDW17

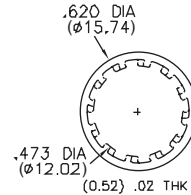
### LOCK WASHERS

Series 34A (Std)



HDW11

For Actuator Options 7, 8



HDW12