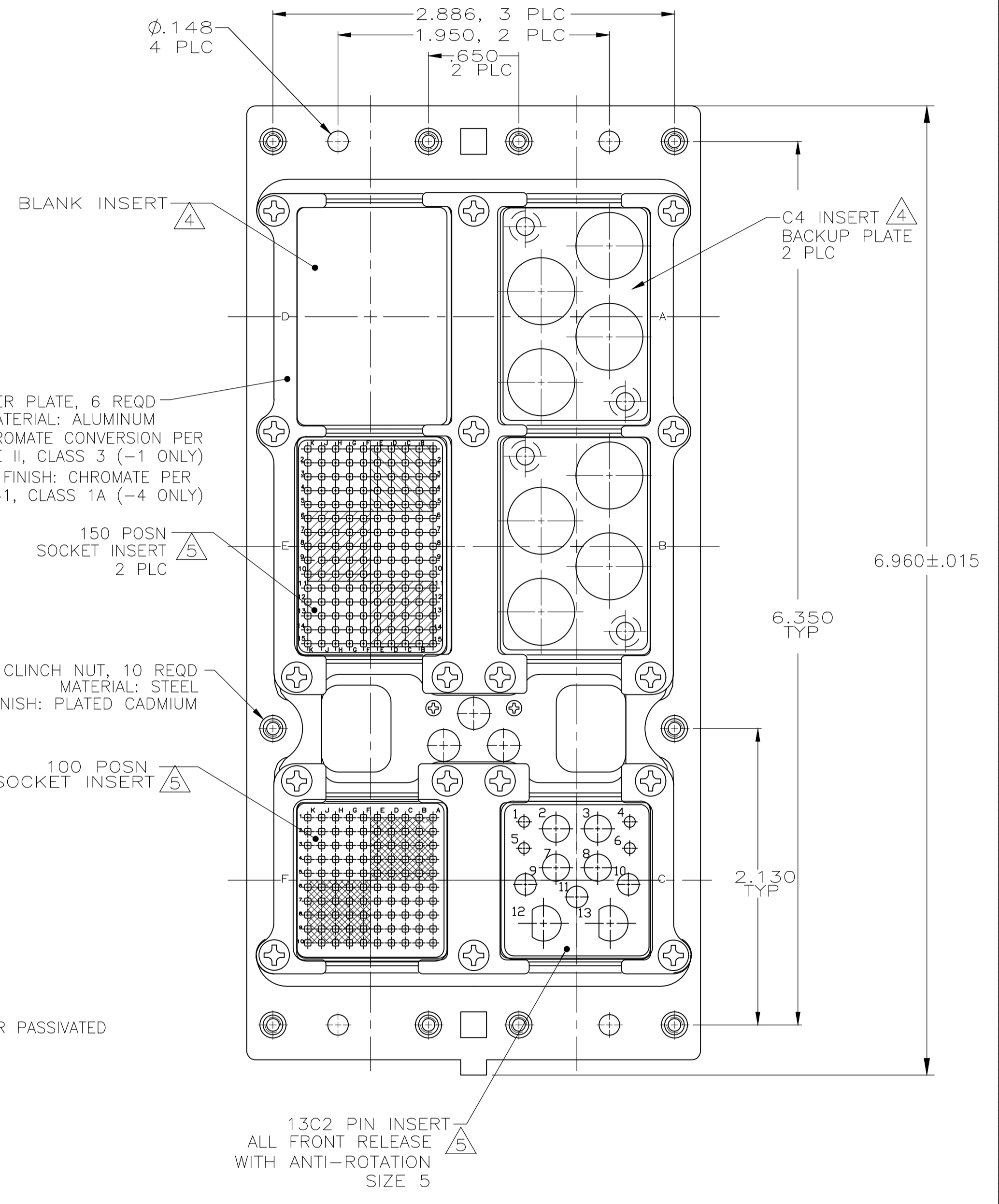
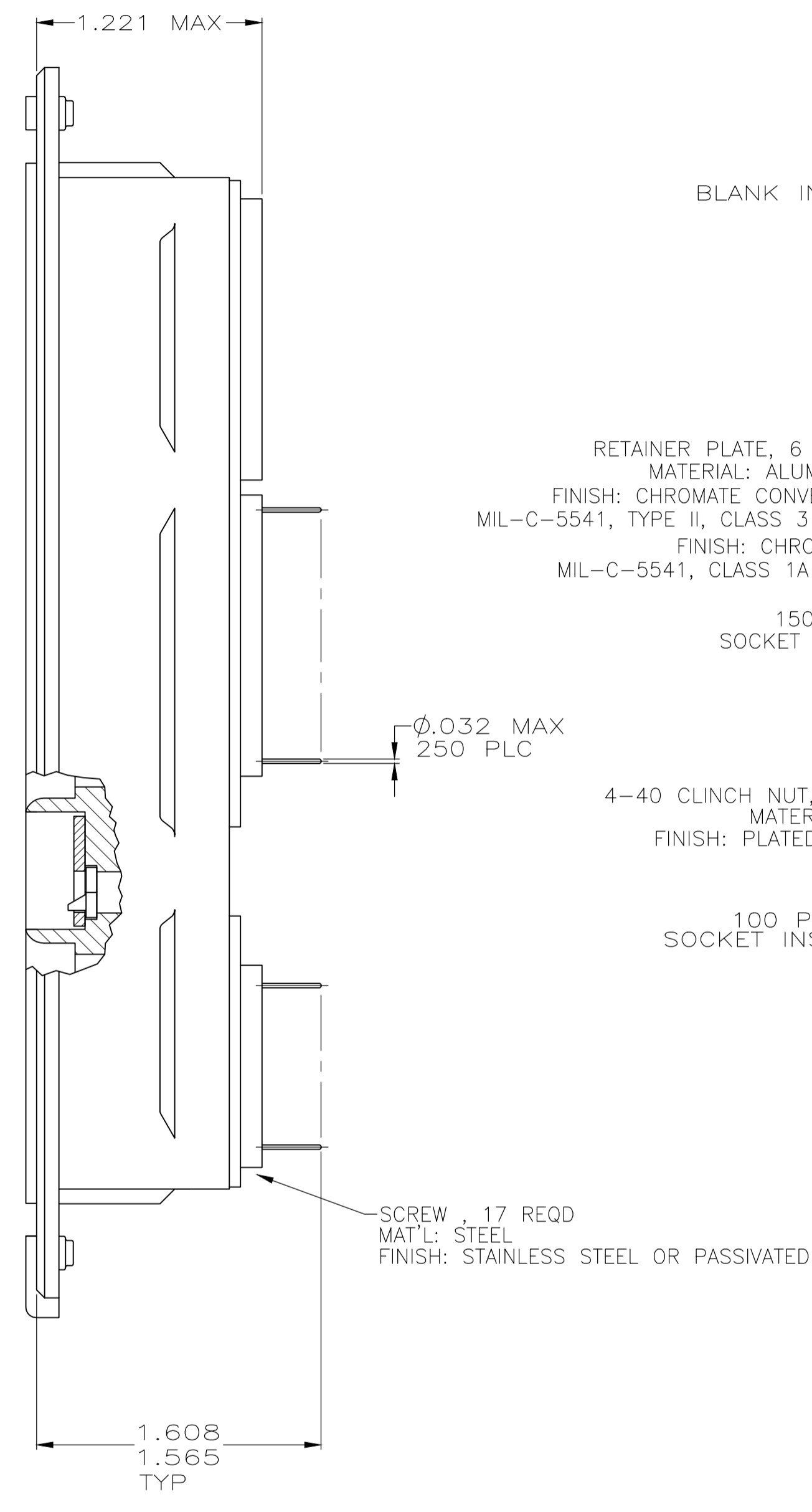
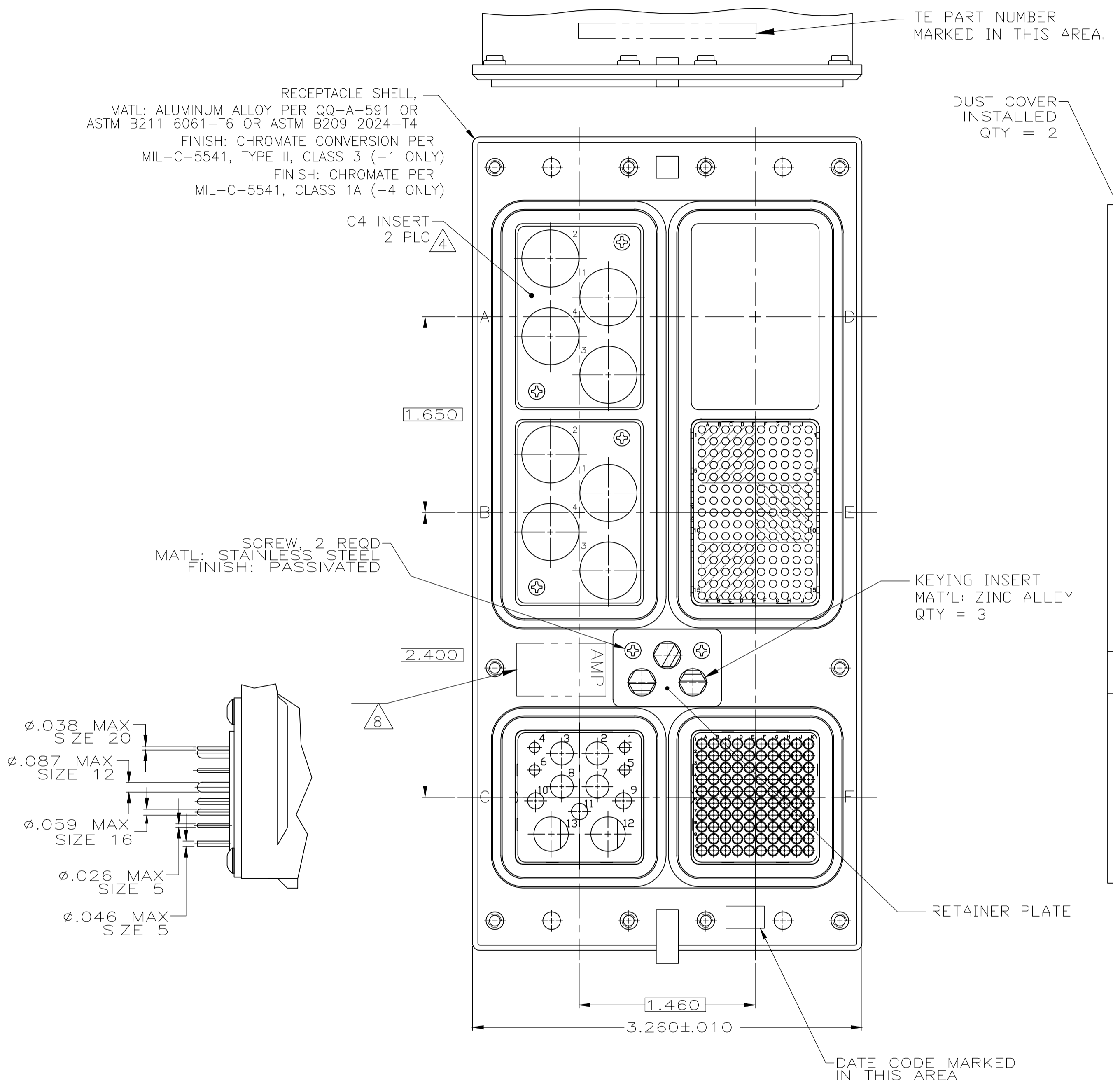


| REVISIONS |     |                           |           |     |      |
|-----------|-----|---------------------------|-----------|-----|------|
| P         | LTR | DESCRIPTION               | DATE      | DMN | APVD |
| P         |     | REVISED PER ECO-17-018523 | 19JAN2018 | PHM | CT   |

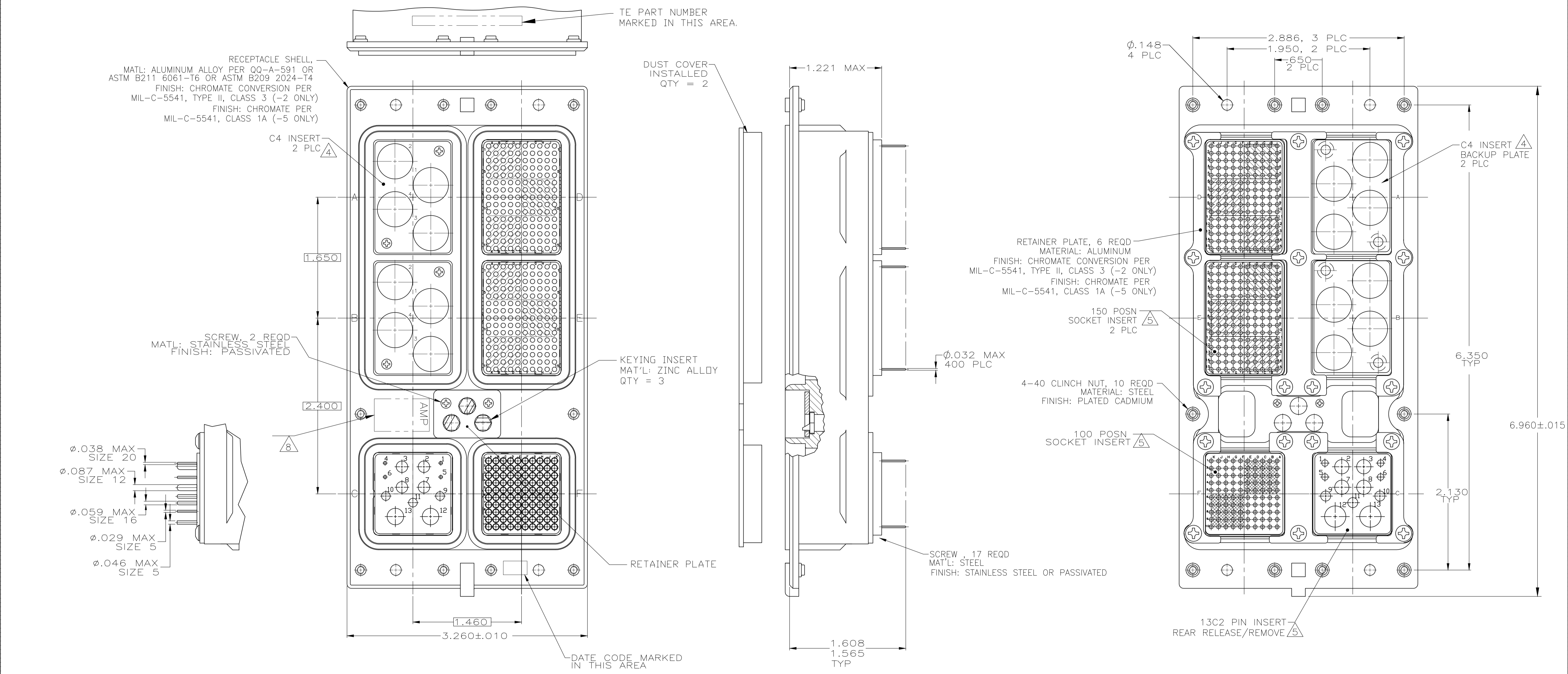


- CONNECTOR DIMENSIONS ARE PER ARINC 600 SPECIFICATION
- FOLLOWING CONTACTS ARE INCLUDED AND LOADED:  
 SIZE 22 SOCKET: TE P/N 1-211431-4; QTY=250 (-1 ONLY)  
 SIZE 22 SOCKET: NON-REMOVABLE STAMPED & FORMED; QTY=250 (-4 ONLY)  
 SIZE 20 PIN CONTACT: TE P/N 2-448138-7; QTY=4  
 SIZE 16 PIN: TE P/N 2-448139-2; QTY: 3  
 SIZE 12 PIN: TE P/N 1-148140-9; QTY: 4  
 SIZE 5 COAX: TE P/N 1484201-4; QTY=2  
 ALL SOLDER POSTS ARE SOLDER DIPPED.
- POLARIZING KEYS ARE INSTALLED IN POSITION 40.
- INSERT MATERIAL: DIE CAST ALUMINUM PER ASTM-B-85.  
 INSERT FINISH: CHROMATE PER MIL-C05541, CLASS 1A
- INSERT MATERIAL: THERMOPLASTIC OR THERMOSET EPOXY.
- SIZE 1 COAX CONTACTS NOT INCLUDED, MUST BE ORDERED SEPARATELY
- THE C4 INSERT BACKUP PLATES AND SCREWS ARE ASSEMBLED TO CONNECTOR
- TE LOGO APPEARS IN THIS APPROXIMATE LOCATION ON MACHINED FROM BILLET SHELLS.
- ASSEMBLY SHOWN WITH DIE CAST SHELL. ASSEMBLIES WITH MACHINED SHELLS MAY VARY SLIGHTLY IN APPEARANCE.

|   |             |
|---|-------------|
| MODULE E & F: MONDBLOCK INSERTS WITH NON-REMOVABLE STAMPED & FORMED SIZE 22 SOCKET CONTACTS | 1484510-4   |
| MODULE E & F: FRONT RELEASE INSERTS WITH STANDARD SIZE 22 SOCKET CONTACTS                   | 1484510-1   |
| REMARKS   | PART NUMBER |

|  |  |                                     |                              |                  |
|--|--|-------------------------------------|------------------------------|------------------|
| THIS DRAWING IS A CONTROLLED DOCUMENT.   |  | DMN: S. HOFFMAN 10/14/02            | TE Connectivity              |                  |
| DIMENSIONS: INCHES   |  | CHK: S. GLATFELTER 10-24-02         | APVD: S. GLATFELTER 10-24-02 |                  |
| TOLERANCES UNLESS OTHERWISE SPECIFIED:   |  | NAME: RECEPTACLE ASSY, SIZE 3, TCAS |                              |                  |
| 0 PLC ± -<br>1 PLC ± -<br>2 PLC ± -<br>3 PLC ± .005<br>4 PLC ± -<br>ANGLES ± - |  | APPLICATION SPEC                    |                              |                  |
| MATERIAL: SEE CALLOUTS   |  | FINISH: SEE CALLOUTS                | WEIGHT: 0                    | RESTRICTED TO: - |
| CUSTOMER DRAWING   |  | SCALE: 3:2                          | SHEET: 1 OF 3                | REV: P           |

| REVISIONS |     |             |      |      |
|-----------|-----|-------------|------|------|
| P         | LTR | DESCRIPTION | DATE | APPD |
| -         | -   | SEE SHEET 1 | -    | -    |



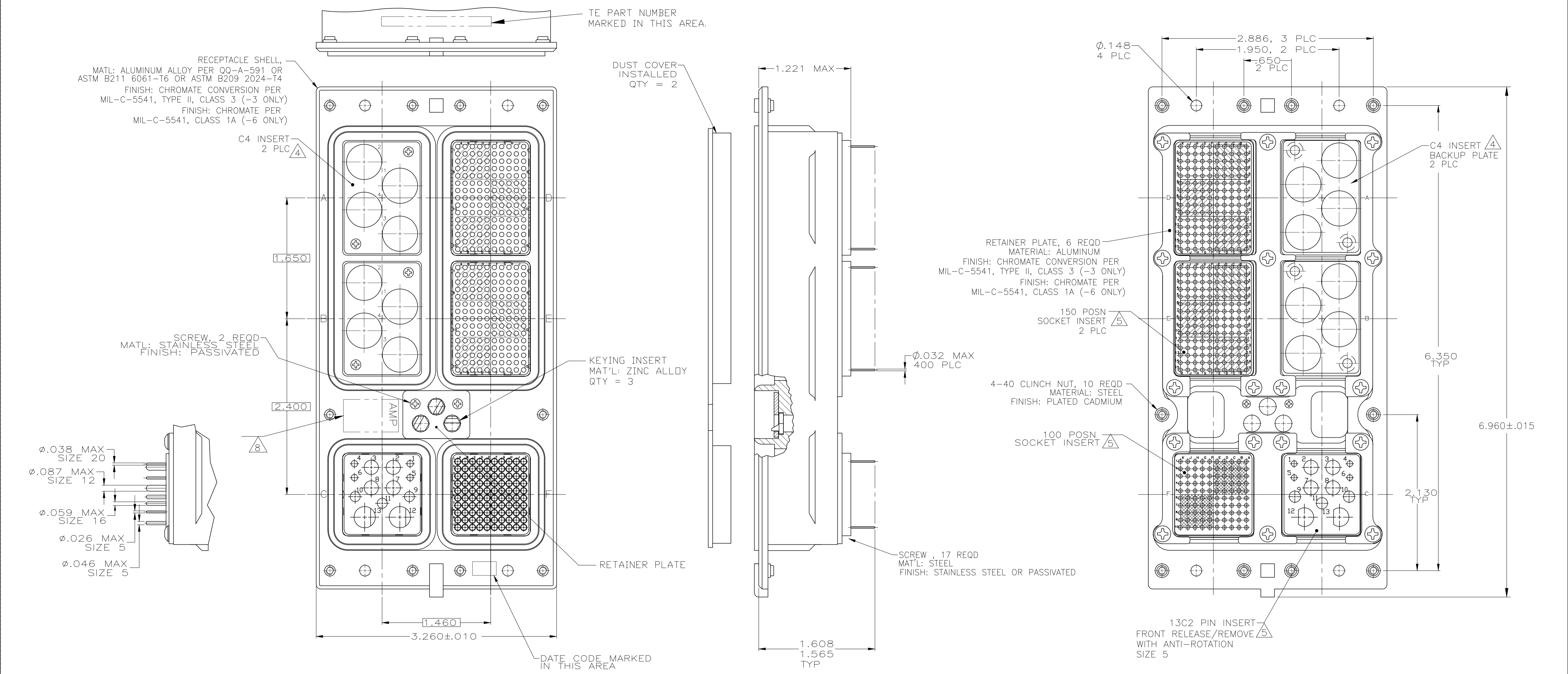
- CONNECTOR DIMENSIONS ARE PER ARINC 600 SPECIFICATION
- FOLLOWING CONTACTS ARE INCLUDED AND LOADED:  
 SIZE 22 SOCKET: TE P/N 1-211431-4; QTY=400 (-2 ONLY)  
 SIZE 22 SOCKET: NON-REMOVABLE STAMPED & FORMED; QTY=400 (-5 ONLY)  
 SIZE 20 PIN CONTACT: TE P/N 1663533-3; QTY=4  
 SIZE 16 PIN: TE P/N 1663128-6, QTY: 3  
 SIZE 12 PIN: TE P/N 1663129-6, QTY: 4  
 SIZE 5 COAX: P/N 1663535-1; QTY=1 (POSTED CONTACT) IN POSN 12  
 SIZE 5 COAX: P/N 1663389-1; QTY=1 (SIZE 5 TO SMB ADAPTER) IN POSN 13  
 ALL SOLDER POSTS ARE SOLDER DIPPED.

- POLARIZING KEYS ARE INSTALLED IN POSITION 52.
- INSERT MATERIAL: DIE CAST ALUMINUM PER ASTM-B-85. INSERT FINISH: CHROMATE PER MIL-C-5541, CLASS 1A
- INSERT MATERIAL: THERMOPLASTIC OR THERMOSET EPOXY.
- SIZE 1 COAX CONTACTS NOT INCLUDED, MUST BE ORDERED SEPARATELY
- THE C4 INSERT BACKUP PLATES AND SCREWS ARE ASSEMBLED TO CONNECTOR
- TE LOGO APPEARS IN THIS APPROXIMATE LOCATION ON MACHINED FROM BILLET SHELLS.
- ASSEMBLY SHOWN WITH DIE CAST SHELL. ASSEMBLIES WITH MACHINED SHELLS MAY VARY SLIGHTLY IN APPEARANCE.

|  |             |
|--|-------------|
| MODULE D, E & F: MONOBLOCK INSERTS WITH NON-REMOVABLE STAMPED & FORMED SIZE 22 SOCKET CONTACTS | 1484510-5   |
| MODULE D, E & F: FRONT RELEASE INSERTS WITH STANDARD SIZE 22 SOCKET CONTACTS                   | 1484510-2   |
| REMARKS  | PART NUMBER |

|   |   |  |   |                              |       |   |   |       |   |   |       |   |      |       |   |   |        |   |   |  |  |              |   |                  |   |        |   |      |  |
|---|---|--|---|------------------------------|-------|---|---|-------|---|---|-------|---|------|-------|---|---|--------|---|---|--|--|--------------|---|------------------|---|--------|---|------|--|
| THIS DRAWING IS A CONTROLLED DOCUMENT.  |   | DIN S. HOFFMAN 10/14/02                |   | TE Connectivity              |       |   |   |       |   |   |       |   |      |       |   |   |        |   |   |  |  |              |   |                  |   |        |   |      |  |
| DIMENSIONS: INCHES  |   | TOLERANCES UNLESS OTHERWISE SPECIFIED: |   | APVD S. GLATFELTER 10-24-02  |       |   |   |       |   |   |       |   |      |       |   |   |        |   |   |  |  |              |   |                  |   |        |   |      |  |
| <table border="1"> <tr><td>0 PLC</td><td>±</td><td>-</td></tr> <tr><td>1 PLC</td><td>±</td><td>-</td></tr> <tr><td>2 PLC</td><td>±</td><td>-</td></tr> <tr><td>3 PLC</td><td>±</td><td>.005</td></tr> <tr><td>4 PLC</td><td>±</td><td>-</td></tr> <tr><td>ANGLES</td><td>±</td><td>-</td></tr> </table> |   | 0 PLC                                  | ± | -                            | 1 PLC | ± | - | 2 PLC | ± | - | 3 PLC | ± | .005 | 4 PLC | ± | - | ANGLES | ± | - | <table border="1"> <tr><td>PRODUCT SPEC</td><td>-</td></tr> <tr><td>APPLICATION SPEC</td><td>-</td></tr> <tr><td>WEIGHT</td><td>-</td></tr> </table> |  | PRODUCT SPEC | - | APPLICATION SPEC | - | WEIGHT | - | NAME |  |
| 0 PLC   | ± | -                                      |   |                              |       |   |   |       |   |   |       |   |      |       |   |   |        |   |   |  |  |              |   |                  |   |        |   |      |  |
| 1 PLC   | ± | -                                      |   |                              |       |   |   |       |   |   |       |   |      |       |   |   |        |   |   |  |  |              |   |                  |   |        |   |      |  |
| 2 PLC   | ± | -                                      |   |                              |       |   |   |       |   |   |       |   |      |       |   |   |        |   |   |  |  |              |   |                  |   |        |   |      |  |
| 3 PLC   | ± | .005                                   |   |                              |       |   |   |       |   |   |       |   |      |       |   |   |        |   |   |  |  |              |   |                  |   |        |   |      |  |
| 4 PLC   | ± | -                                      |   |                              |       |   |   |       |   |   |       |   |      |       |   |   |        |   |   |  |  |              |   |                  |   |        |   |      |  |
| ANGLES  | ± | -                                      |   |                              |       |   |   |       |   |   |       |   |      |       |   |   |        |   |   |  |  |              |   |                  |   |        |   |      |  |
| PRODUCT SPEC  | - |  |   |                              |       |   |   |       |   |   |       |   |      |       |   |   |        |   |   |  |  |              |   |                  |   |        |   |      |  |
| APPLICATION SPEC  | - |  |   |                              |       |   |   |       |   |   |       |   |      |       |   |   |        |   |   |  |  |              |   |                  |   |        |   |      |  |
| WEIGHT  | - |  |   |                              |       |   |   |       |   |   |       |   |      |       |   |   |        |   |   |  |  |              |   |                  |   |        |   |      |  |
| MATERIAL SEE CALLOUTS   |   | FINISH SEE CALLOUTS                    |   | SIZE CASE CODE DRAWING NO    |       |   |   |       |   |   |       |   |      |       |   |   |        |   |   |  |  |              |   |                  |   |        |   |      |  |
|   |   |  |   | A1 00779 C=1484510           |       |   |   |       |   |   |       |   |      |       |   |   |        |   |   |  |  |              |   |                  |   |        |   |      |  |
|   |   | CUSTOMER DRAWING                       |   | SCALE 3:2 SHEET 2 OF 3 REV P |       |   |   |       |   |   |       |   |      |       |   |   |        |   |   |  |  |              |   |                  |   |        |   |      |  |

| REVISIONS |     |             |      |      |
|-----------|-----|-------------|------|------|
| P         | LTR | DESCRIPTION | DATE | APPV |
| -         | -   | SEE SHEET 1 | -    | -    |



- CONNECTOR DIMENSIONS ARE PER ARINC 600 SPECIFICATION
- FOLLOWING CONTACTS ARE INCLUDED AND LOADED:  
 SIZE 22 SOCKET: TE P/N 1-211431-4; QTY=400 (-3 ONLY)  
 SIZE 22 SOCKET: NON-REMOVABLE STAMPED & FORMED; QTY=400 (-6 ONLY)  
 SIZE 20 PIN CONTACT: TE P/N 1663533-3; QTY=4  
 SIZE 16 PIN: TE P/N 1663128-6; QTY: 3  
 SIZE 12 PIN: TE P/N 1663129-6; QTY: 4  
 SIZE 5 COAX: TE P/N 1484201-4; QTY=2  
 ALL SOLDER POSTS ARE SOLDER DIPPED.
- POLARIZING KEYS ARE INSTALLED IN POSITION 52.
- INSERT MATERIAL: DIE CAST ALUMINUM PER ASTM-B-85. INSERT FINISH: CHROMATE PER MIL-C-5541, CLASS 1A
- INSERT MATERIAL: THERMOPLASTIC OR THERMOSET EPOXY.
- SIZE 1 COAX CONTACTS NOT INCLUDED, MUST BE ORDERED SEPARATELY
- THE C4 INSERT BACKUP PLATES AND SCREWS ARE ASSEMBLED TO CONNECTOR
- TE LOGO APPEARS IN THIS APPROXIMATE LOCATION ON MACHINED FROM BILLET SHELLS.
- ASSEMBLY SHOWN WITH DIE CAST SHELL. ASSEMBLIES WITH MACHINED SHELLS MAY VARY SLIGHTLY IN APPEARANCE.

|  |             |
|--|-------------|
| MODULE D, E & F: MONOBLOCK INSERTS WITH NON-REMOVABLE STAMPED & FORMED SIZE 22 SOCKET CONTACTS | 1484510-6   |
| MODULE D, E & F: FRONT RELEASE INSERTS WITH STANDARD SIZE 22 SOCKET CONTACTS                   | 1484510-3   |
| REMARKS  | PART NUMBER |

|  |  |                             |  |                              |  |
|--|--|-----------------------------|--|------------------------------|--|
| THIS DRAWING IS A CONTROLLED DOCUMENT.   |  | DIN S. HOFFMAN 10/14/02     |  | TE Connectivity              |  |
| DIMENSIONS: INCHES   |  | CHK S. GLATFELTER 10-24-02  |  | NAME                         |  |
| TOLERANCES UNLESS OTHERWISE SPECIFIED:   |  | APPV S. GLATFELTER 10-24-02 |  | PRODUCT SPEC                 |  |
| 0 PLC ± -<br>1 PLC ± -<br>2 PLC ± -<br>3 PLC ± .005<br>4 PLC ± -<br>ANGLES ± - |  | APPLICATION SPEC            |  | SIZE CASE CODE DRAWING NO    |  |
| MATERIAL SEE CALLOUTS  |  | FINISH SEE CALLOUTS         |  | RESTRICTED TO                |  |
| WEIGHT 0   |  | A1 00779                    |  | SCALE 3:2 SHEET 3 OF 3 REV P |  |
| CUSTOMER DRAWING   |  | C=1484510                   |  | SCALE 3:2 SHEET 3 OF 3 REV P |  |