

# S CN BN - J 1 1 50 - SO RBP

SUNTSU

CONNECTOR

BNC

Connector Type  
Jack

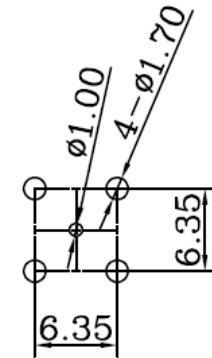
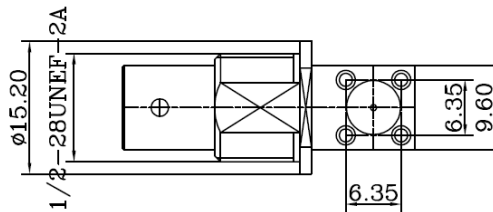
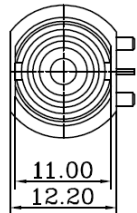
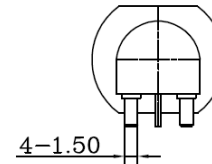
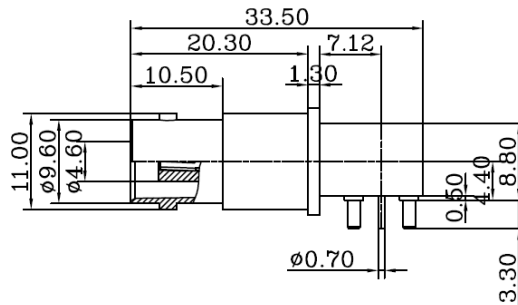
Rows

Connectors  
per Row

Impedance  
50

Contact Termination  
Solder

Mounting Style  
Right Angle  
Bulkhead PCB  
Mount



**Recommended  
Mounting  
Layout**

**1. Materials:**

- a) Body: Zinc Nickel Plated
- b) Contact: Brass Nickel Plated

- 2. Normal Impedance: 50Ω
- 3. Frequency Range: 0-4 GHz
- 4. Max Peak Voltage: 500V
- 5. Dielectric Strength: 1500V RMS
- 6. Insulation Resistance: 5000MΩ/Min



**BNC FEMALE BULKHEAD PCB  
MOUNT 90°**

Document History			
Edits Made	Date	Edited By	Approved By
Initial Release	03/23/2022	B. Gibbons	KH Mun

Part No.	SCNBN-J1150-SORBP	
Scale	Not drawn to scale	
Unit	mm	
Drawn	B. Gibbons	03/23/2022
Tolerance	0.5-15 = ±0.15 15-30 = ±0.30 30-120 = ±0.60 >120 = ±1.00	
Pages	1/1	