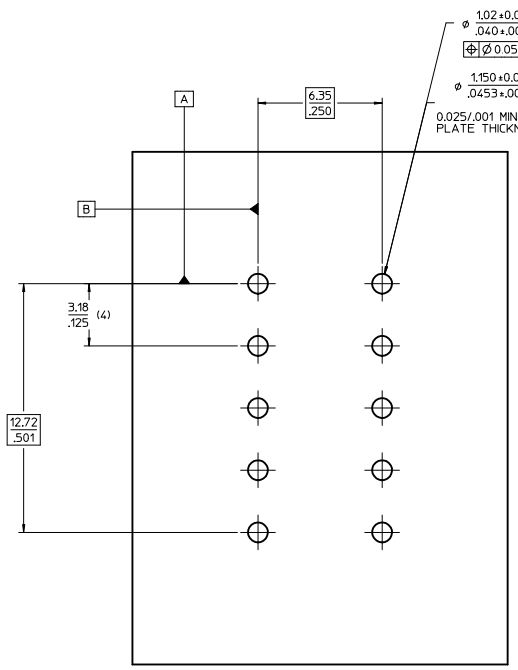
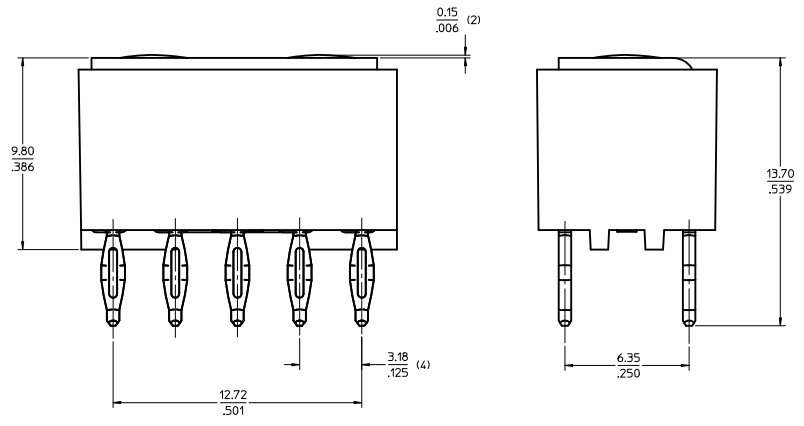
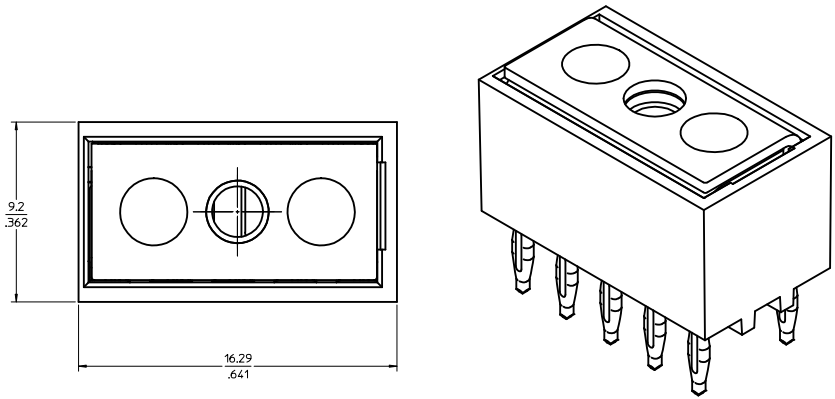


RECOMMENDED MOUNTING HARDWARE

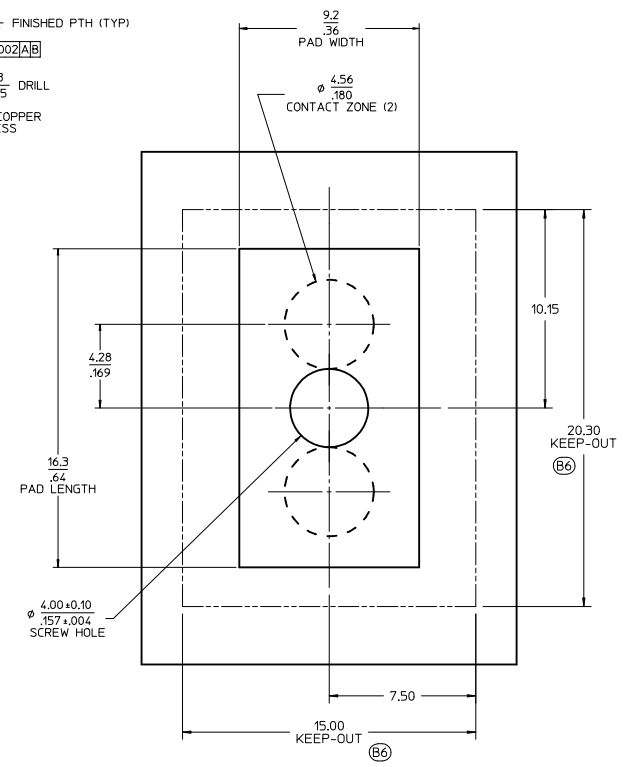
PCB THICKNESS	SCREW LENGTH	SCREW SIZE	FLAT WASHER SPEC.S (DIN 9021)	BELLEVILLE WASHER SPEC.S (DIN 6796)
0.063"	6.0mm	M3	MAT'L: STAINLESS STEEL WASHER OUTER DIA.: 9.0mm WASHER INNER DIA.: 3.2mm	MAT'L: STAINLESS STEEL WASHER OUTER DIA.: 7.0mm WASHER INNER DIA.: 3.2mm
0.093"	8.0mm	M3	WASHER THICKNESS: 0.7mm	WASHER THICKNESS: 0.6mm
0.125"	8.0mm	M3		

- NOTES:
1. MATERIAL: LCP, GLASS FILLED, BLACK, CONTACTS: COPPER ALLOY
  2. PLATING: SEE CHART
  3. PRODUCT SPECIFICATION: PS-76001-001.
  4. PACKAGING SPECIFICATION: PK-76001-901.
  5. TO REMOVE FROM PCB, SEE Z-POWER EXTRACTION TOOL INSTRUCTION SHEET ATS-621005300. USE EXTRACTION TOOL 621005300.

\* SCREW MAT'L: STAINLESS STEEL  
\* RECOMMENDED TORQUE = .75Nm/6.6In-Lbs.



RECOMMENDED PCB FOOT PRINT LAYOUT  
PCB THICKNESS 2.36/.093 MIN  
PCB COMPLIANT TAIL INSERTION FORCE = 20LBS PER TAIL



RECOMMENDED PCB PAD LAYOUT

PART NUMBER	DESCRIPTION	PLATING
76001-0010	GOLD PLATED	SELECT GOLD: 30µ IN MIN SELECT MATTE TIN: 100µ IN MIN BOTH OVER NICKEL: 50µ IN MIN
76001-0110	TIN PLATED	MATTE TIN OVERALL: 100µ IN MIN NICKEL UNDERPLATE: 50µ IN MIN

(B6)

ADD PCB KEEP-OUT DEC NO: UCP2011-1320 DRAWN: BHANDRA CHKD: APATEL APPR: APATEL DATE: 2010/11/15	QUALITY SYMBOLS	GENERAL TOLERANCES (UNLESS SPECIFIED)	DIMENSION STYLE	SCALE	DESIGN UNITS	THIRD ANGLE PROJECTION
	∇=0 ∇=0 ∇=0	mm: ±.02 INCH: ±.005 ANGULAR: ±1/2°	MM/IN	8:1	METRIC	Z-POWER 10 TAIL ASSEMBLY
	4 PLACES ±.02 3 PLACES ±.005 2 PLACES ±.010 1 PLACE ±.025	DRAWN BY: DMCGOWAN CHECKED BY: MSANDBERG APPROVED BY: APATEL DATE: 2005/11/07 DATE: 2006/02/04 DATE: 2010/11/15				
	DRAFT WHERE APPLICABLE MUST REMAIN WITHIN DIMENSIONS	MATERIAL NO. SEE CHART DOCUMENT NO. SD-76001-001				MOLEX INCORPORATED SHEET NO. 1 OF 1