



Inscription plate for illuminated pushbutton, round, milky with black font, with graphic symbol: II

|                                                                     |                             |
|---------------------------------------------------------------------|-----------------------------|
| product brand name                                                  | SIRIUS ACT                  |
| product designation                                                 | Insert label                |
| product type designation                                            | 3SU1                        |
| <b>General technical data</b>                                       |                             |
| shock resistance for railway applications according to EN 61373     | Category 1, Class B         |
| vibration resistance for railway applications according to EN 61373 | Category 1, Class B         |
| Substance Prohibitance (Date)                                       | 10/01/2014                  |
| <b>Ambient conditions</b>                                           |                             |
| ambient temperature                                                 |                             |
| • during operation                                                  | 70 ... -25 °C               |
| • during storage and transport                                      | 80 ... -40 °C               |
| <b>Accessories</b>                                                  |                             |
| material of accessory                                               | Plastic                     |
| fastening method of label                                           | insert                      |
| marking of inscription plate                                        | II                          |
| shape of inscription plate                                          | Round                       |
| color of inscription plate                                          | milky (plate); black (text) |
| printed ISO symbols                                                 | II                          |
| <b>Certificates/ approvals</b>                                      |                             |
| General Product Approval                                            | Declaration of Conformity   |



[Confirmation](#)



**Test Certificates**      **Marine / Shipping**

[Type Test Certificates/Test Report](#)



**other**

Further information

Information- and Downloadcenter (Catalogs, Brochures,...)

<https://www.siemens.com/ic10>

Industry Mall (Online ordering system)

<https://mall.industry.siemens.com/mall/en/en/Catalog/product?mlfb=3SU1900-0AB71-0QC0>

Cax online generator

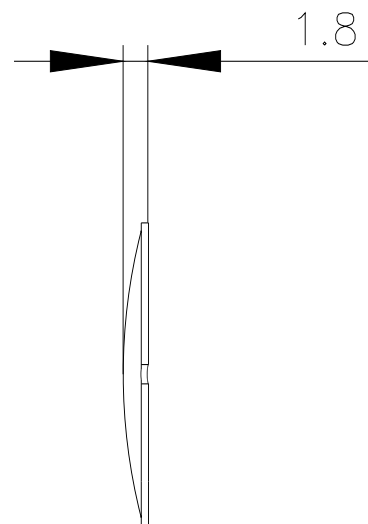
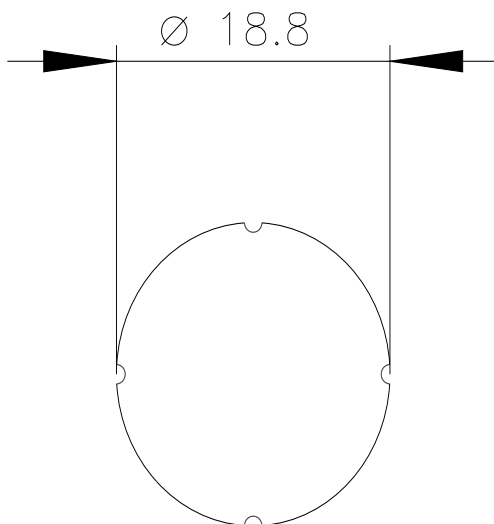
<http://support.automation.siemens.com/WW/CAXorder/default.aspx?lang=en&mlfb=3SU1900-0AB71-0QC0>

Service&Support (Manuals, Certificates, Characteristics, FAQs,...)

<https://support.industry.siemens.com/cs/ww/en/ps/3SU1900-0AB71-0QC0>

Image database (product images, 2D dimension drawings, 3D models, device circuit diagrams, EPLAN macros, ...)

[http://www.automation.siemens.com/bilddb/cax\\_de.aspx?mlfb=3SU1900-0AB71-0QC0&lang=en](http://www.automation.siemens.com/bilddb/cax_de.aspx?mlfb=3SU1900-0AB71-0QC0&lang=en)



last modified:

3/29/2022 