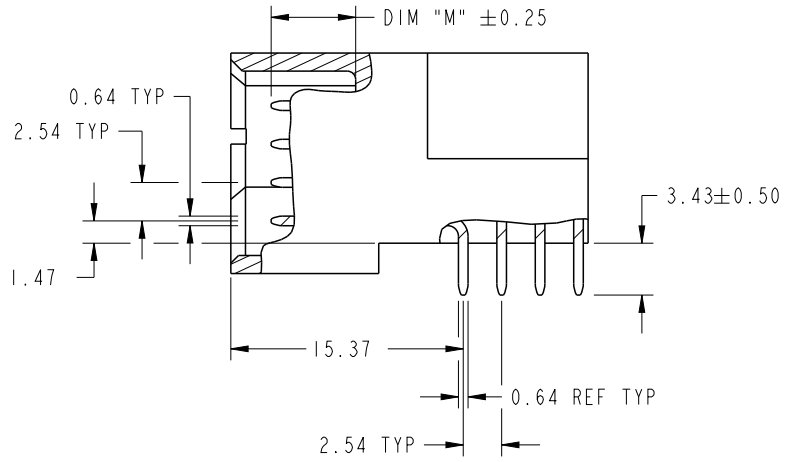


CODE	DIM "M" MATING LENGTH	CONTACT TYPE
H	[5.59]	SIGNAL
G	[5.59]	SIGNAL
F	[5.59]	SIGNAL
E	[5.59]	SIGNAL
R	[6.86]	SIGNAL
U	[6.86]	SIGNAL
HA	[N/A]	HOLD-DOWN
X	OMITTED	

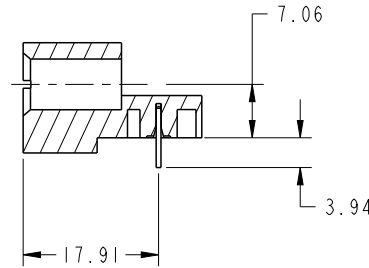
spec ref	See Notes		dr	Fang Qian	2016/03/24	projection 	MM ←→	size	A4	scale	1:1
tolerance std	TOLERANCES UNLESS OTHERWISE SPECIFIED		eng	Fang Qian	2016/03/31			ecn no	-		
See Notes			chr	Fancy Zhang	2016/03/31			rel level	Released		
surface	linear	0.X ±0.5	appr	Pei-Ming Zheng	2016/03/31	product family	PwrBlade		rev	A	
		0.XX ±0.25	Amphenol FCi			title	40S		dwg no	51939-1015	
		0.XXX ±0.1				RIGHT ANGLE STB HEADER	sheet	1 of 4			
	angular	0° ±2°	cat. no.	-	Product - Customer Drw	sheet		1 of 4			

Creo File - REV E - 2016-02-12

PRODUCT NUMBER
51939-1015LF



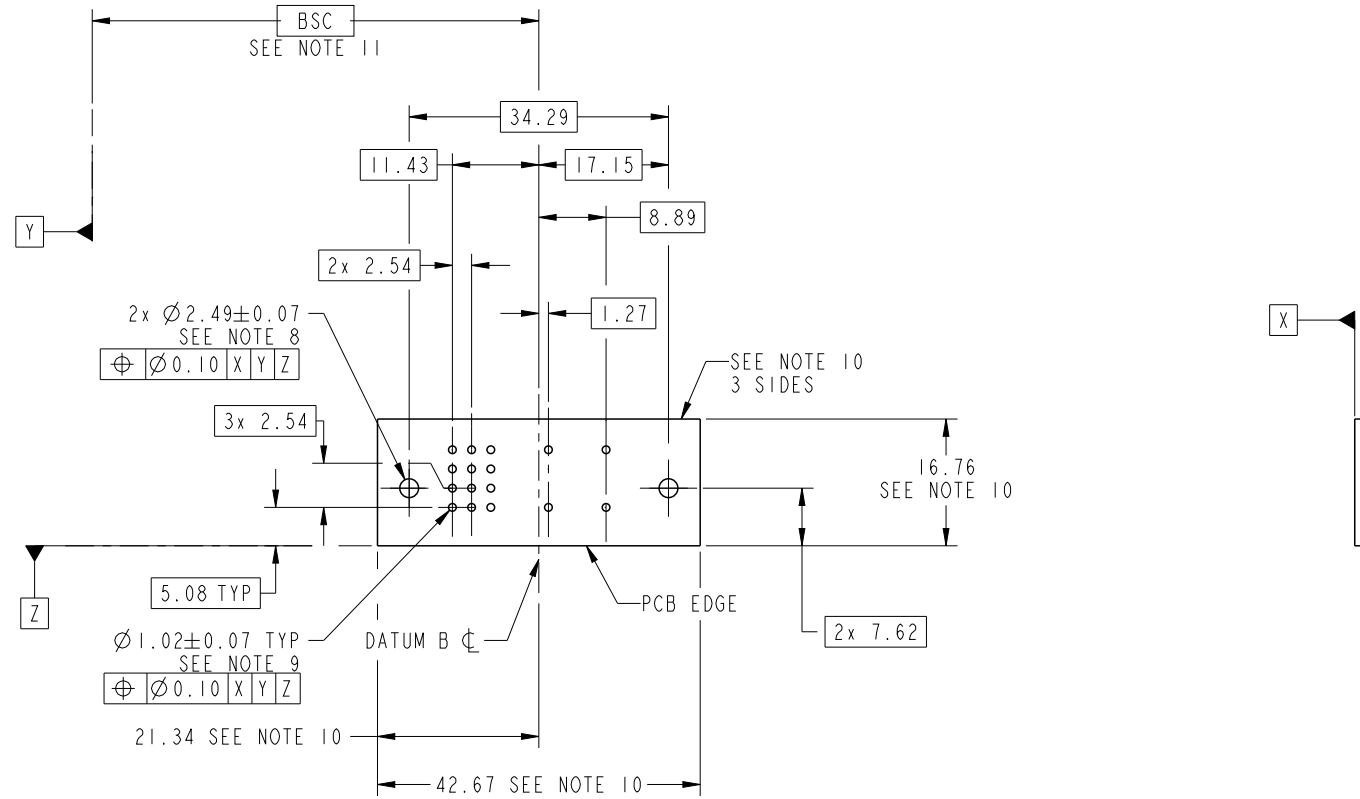
BROKEN-OUT SECTION A-A
SCALE 2:1



SECTION C-C

spec ref		See Notes		dr	Fang Qian	2016/03/24	projection 	MM ←→	size	A4	scale	1:1	
tolerance std		TOLERANCES UNLESS OTHERWISE SPECIFIED		eng	Fang Qian	2016/03/31			ecn no	-			
See Notes				chr	Fancy Zhang	2016/03/31							
surface		linear	0.X ±0.5	appr	Pei-Ming Zheng	2016/03/31	product family		PwrBlade	rel level	Released		
			0.XX ±0.25	Amphenol FCi		title	40S		dwg no	51939-1015		rev	A
			0.XXX ±0.1				RIGHT ANGLE STB HEADER		Product - Customer Drw		sheet 2 of 4		
		angular	0° ±2°			cat. no.	-						

PRODUCT NUMBER
51939-1015LF



RECOMMENDED PCB LAYOUT

spec ref	See Notes			dr	Fang Qian	2016/03/24	projection 	MM ←→	size	A4	scale	1:1	
tolerance std	TOLERANCES UNLESS OTHERWISE SPECIFIED			eng	Fang Qian	2016/03/31			ecn no	-	rel level	Released	
See Notes				chr	Fancy Zhang	2016/03/31							
surface	linear	0.X	±0.5	appr	Pei-Ming Zheng	2016/03/31	product family	PwrBlade		rev			
		0.XX	±0.25	Amphenol FCi			title	40S		dwg no	51939-1015	rev	A
		0.XXX	±0.1				RIGHT ANGLE STB HEADER						
	angular	0°	±2°	cat. no.	-	Product - Customer Drw	sheet 3 of 4						

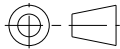
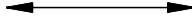
PRODUCT NUMBER
51939-1015LF

NOTES:

1. DIMENSIONS AND TOLERANCES ARE IN ACCORDANCE WITH ASME Y14.5M, 1994 UNLESS OTHERWISE SPECIFIED.

CONNECTOR NOTES:

- 2. HOUSING MATERIAL: UL 94 V-0 GLASS FILLED HIGH-TEMP THERMOPLASTIC
POWER CONTACT MATERIAL: COPPER ALLOY
SIGNAL PIN MATERIAL: COPPER ALLOY
 - 3. SEE FCI PLATING SPEC 10064183.
 - 4. MANUFACTURER'S NAME, DATE CODE AND OPTIONAL P/N TO APPEAR ON THIS SURFACE. THE MARK CAN BE OMITTED IF THERE IS NOT ENOUGH SPACE ON THIS SURFACE.
 - 5. PRODUCT SPECIFICATION GS-12-149.
APPLICATION SPECIFICATION BUS-20-067.
 - 6. PACKAGED IN TRAYS.
- PCB NOTES:
- 7. ALL HOLE DIAMETERS ARE FINISHED HOLE SIZE.
 - 8. MOUNTING HOLES, WHERE APPLICABLE, ARE UNPLATED.
 - 9. $\varnothing 1.151 \pm 0.025$ DRILLED HOLES PLATED WITH
0.008 MIN SnPb OR Sn OVER 0.03
TO 0.08 Cu PLATING TO ACHIEVE
 $\varnothing 1.02 \pm 0.07$ HOLE.
 - 10. CONNECTOR KEEP-OUT ZONE.
 - 11. DATUM AND BASIC DIMENIONS ARE ESTABLISHED BY CUSTOMER.

spec ref		See Notes		dr	Fang Qian	2016/03/24	projection 	MM 	size	A4	scale	1:1	
tolerance std		TOLERANCES UNLESS OTHERWISE SPECIFIED		eng	Fang Qian	2016/03/31			ecn no	-			
See Notes				chr	Fancy Zhang	2016/03/31			product family	PwrBlade		rel level	Released
surface	linear	0.X	± 0.5	Amphenol FCi	title	40S		dwg no	51939-1015		rev	A	
		0.XX	± 0.25			RIGHT ANGLE STB HEADER							
		0.XXX	± 0.1										
	angular	0°	$\pm 2^\circ$		cat. no.	-	Product - Customer Drw		sheet 4 of 4				