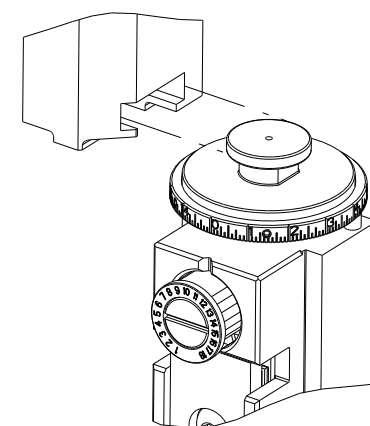


PART NUMBER	REVISION	DESCRIPTION	FEED TYPE
2151492-2	D	FINE CRIMP HEIGHT ADJUST	PNEUMATIC
7-2151492-2	D	PNEUMATIC AND CRIMP TOOLING KIT	PNEUMATIC
7-2151492-7	A	CRIMP TOOLING KIT	-

ATLANTIC VERSION TERMINATOR INTERFACE ADAPTER



APPLICATOR DATA		
CRIMP	SIZE	TYPE
WIRE	3.94 mm [.155]	F
INSUL	5.33 mm [.210]	F

APPLICATOR INSTRUCTIONS 408-35042

TERMINAL DATA: TE TERMINAL TYCO ELECTRONICS CRIMP SPECIFICATION			
TERMINAL NAME: MAXI-POWER-TIMER CONTACT			
WIRE STRIP LENGTH	INSULATION DIAMETER RANGE		
5.89-6.71 mm [.232-.264 IN]	Ø3.30-4.50 mm [.130-.177 IN]		
TERMINAL APPLICATION SPECIFICATION	114-18075 Rev A1	-	-
TERMINALS APPLIED			
TE TERMINAL	TE TERMINAL	TE TERMINAL	TE TERMINAL
962928-1	962928-3	2-962928-1	9-962928-1

WIRE SIZE	CRIMP HEIGHT mm [INCH]	CRIMP HEIGHT REFERENCE SETTING
4.00mm2	2.71+/-0.05 [.107+/- .002]	7.3
3.50mm2	2.62+/-0.05 [.103+/- .002]	8.7
3.00mm2	2.52+/-0.05 [.099+/- .002]	9.7
2.50mm2	2.42+/-0.05 [.095+/- .002]	10.7

- RECOMMENDED SPARE PARTS
 - REFER TO SUPPLIED INSTRUCTION SHEET FOR CLEANING, LUBRICATION AND STORAGE OF APPLICATOR.
 - APPLY PART NUMBER 2-23419-6 LOCTITE TO THREADS OF ITEM 242.
 - CRIMP HEIGHT REFERENCE SETTING WAS THE SETTING USED WHEN THE APPLICATOR WAS QUALIFIED AT THE FACTORY. ADJUSTMENT MAY BE NECESSARY WHEN RUNNING APPLICATOR IN THE FIELD.
 - TERMINAL PITCH NOT COMPATIBLE WITH MECHANICAL FEED.
6. UNLESS SPECIFIED OTHERWISE TORQUE VALUES SHALL BE USED PER DOCUMENT, 101-35000.

***WARNING**
 ON INSTALLATION, SET WIRE DISC TO CRIMP HEIGHT REFERENCE SETTING FOR LARGEST WIRE SIZE. CRIMP HEIGHT REFERENCE SETTINGS GREATER THAN THE VALUE SHOWN MAY CAUSE DAMAGE TO THE CRIMP TOOLING. REFER TO THE INSTRUCTION SHEET FOR PROPER SETUP AND ADJUSTMENTS.

ATLANTIC VERSION
 Shown on sheets 1 of 4 & 2 of 4
 (Pacific version shown on sheets 3 of 4 & 4 of 4)

LOC	DIST	REVISIONS					
A	66	P	LTN	DESCRIPTION	DATE	OWN	APVD
		A1		ADDED TERMINAL, ECR-15-001171	23JAN2015	JH	GB
		B		ECR-18-003358	05MAR2018	JAH	CT
		C		ECR-21-125387	30DEC2021	JWC	TE
		D		ECR-22-127600	25JAN2022	FJ	TE

-	1	1	1901085-8	FENCE	267	
-	1	1	2119641-1	FEED CAM, AIR FEED	248	
-	1	1	2119082-9	CAM, SNAIL, INSULATION ADJUSTMENT	244	
-	1	1	2079764-1	WASHER, WAVE SPRING, CREST-TO-CREST	243	
-	1	1	2119083-1	RETAINER, INSULATION DIAL	242	
-	1	1	7-18023-7	SCR, SKT HD CAP M3 X 4.0	241	
-	1	1	2844940-2	AIR FEED MODULE	238	
-	REF	REF	994970-2	COUNTER, MAGNETIC	164	
-	1	1	2844908-1	SCREW, LOCKING	99	
-	1	1	2844907-1	POST, LOCKING	98	
-	2	2	2168083-1	SCR, SKT HD CAP, RoHS, M3 X 8.0	95	
-	1	1	318563-1	GUARD, FRONT CHIP	89	
-	1	1	455888-5	SPACER, CRIMPER	82	
-	1	1	1803096-1	EXTENSION PLATE	78	
-	1	1	1-22278-0	SPRING, COMPRESSION	77	
-	1	1	854769-4	HOLDER, INS	74	
-	1	1	1803607-3	DOCUMENTATION PACKAGE	71	
-	1	1	2119791-6	DEPRESSOR, WIRE	70	
-	1	1	2119740-1	TAG IDENTIFICATION	67	
-	2	2	2168078-1	SCREW, DRIVE, RH, RoHS, 2 x .188	66	
-	1	1	2168083-2	SCR, SKT HD CAP, RoHS, M4 X 8.0	60	
-	2	2	2079383-4	SCR, BHSC, RoHS (M4 X 8)	60	
-	1	1	5-18022-5	SCR, HEX HD CAP, M4 X 6.0	59	
-	1	1	21028-2	PIN, SLOTTED SPRING .062 X .250	58	
-	1	1	1-1338683-7	FEED PAWL	56	
-	4	4	2168083-3	SCR, SKT HD CAP, RoHS, M4 X 12.0	54	
-	2	2	2168083-8	SCR, SKT HD CAP, RoHS, M4 X 16	53	
-	1	1	5018030-1	NUT, HEX, REG, RoHS, M3	52	
-	1	1	1-811242-0	BUMPER, HOLD DOWN	51	
-	1	1	690753-2	SPACER, TONKER	50	
-	1	1	18023-9	SCR, SKT HD CAP M4 X 6.0	49	
-	1	1	1803583-9	APPLICATOR BASIC ASSEMBLY, SF	46	
-	1	1	1803515-1	RAM ASSEMBLY, SF ATLANTIC	44	
-	1	1	1803602-1	SCR, BHSC, RoHS (M8 X 25)	41	
-	1	1	1-1752356-0	SUPPORT, TERMINAL	34	
-	2	2	2079383-5	SCR, BHSC, RoHS (M4 X 20)	33	
-	2	2	3-2844962-3	SPACER, CYLINDRICAL, STRIP GUIDE	30	
-	1	1	2844992-2	ASSEMBLY, STRIP GUIDE	29	
-	1	1	455888-4	SPACER, CRIMPER	28	
-	1	1	2-1320928-3	STRIP GUIDE	24	
-	1	1	2168083-2	SCR, SKT HD CAP, RoHS, M4 X 8.0	21	
-	2	2	1-18028-2	WASHER, FLAT, REG M4	20	
-	1	1	2119533-1	STRIPPER, SIDE FEED	19	
-	1	1	2119806-1	INSERT, SHEAR	13	
-	1	1	3-22280-3	SPRING, COMPRESSION	12	
-	1	1	1-356885-4	STOP, SHEAR	11	
-	1	1	2119805-1	SHEAR HOLDER, FRONT	10	
-	1	1	454276-5	FLOATING SHEAR, FRONT	9	
-	1	2	1	1633927-1	ANVIL, COMBINATION	8
-	1	1	5-240641-0	SPACER	7	
-	1	1	1-2119780-2	DEPRESSOR, SHEAR	5	
-	1	1	238011-2	BLOCK, CRIMPER SPACER	4	
-	1	2	1	1633961-1	CRIMPER, INSULATION F PREMIUM	3
-	1	1	455888-8	SPACER, CRIMPER	2	
-	1	2	1	456415-1	CRIMPER, WIRE .155 F PREMIUM	1

DIMENSIONS:		TOLERANCES UNLESS OTHERWISE SPECIFIED:		MATERIAL:		FINISH:		WEIGHT:		SCALE:	
mm	0 PLC ±	1 PLC ±	2 PLC ±	3 PLC ±	4 PLC ±	ANGLES	FINISH	Customer Accessible Production Drawing	SCALE	1:2	SHEET 1 OF 4

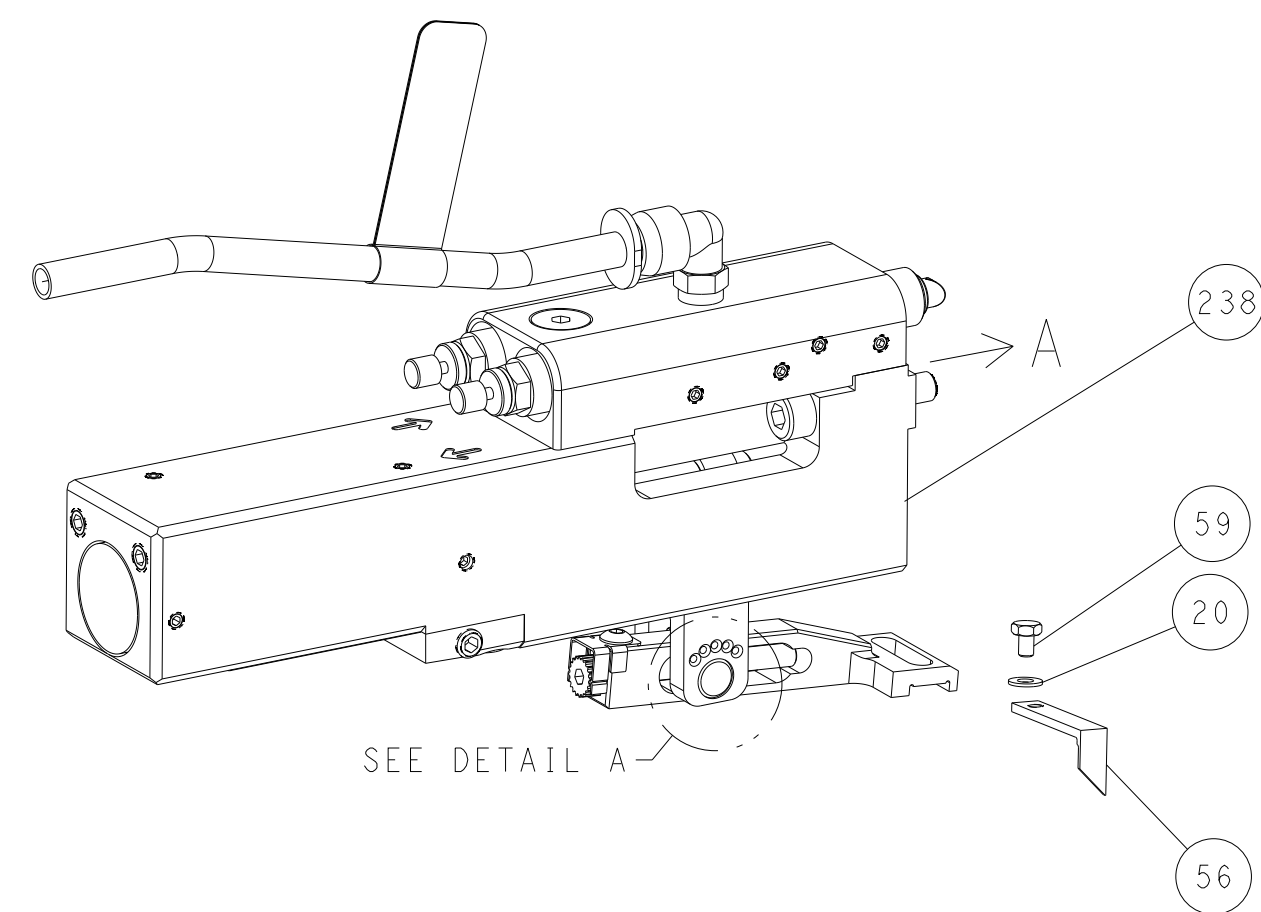
OWN	CHK	APVD	NAME	SIZE	CAGE CODE	DRAWING NO	RESTRICTED TO
HOFFNER	11OCT2011	T. ELBIN	12OCT2011	A1	00779	2151492	D

Customer Accessible Production Drawing

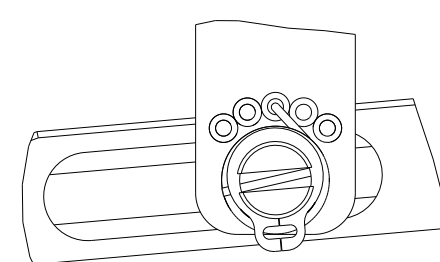
LOC	DIST	REVISIONS					
A	66	P	LTN	DESCRIPTION	DATE	OWN	APVD
		-		SEE SHEET 1			

FEED TYPE

PNEUMATIC

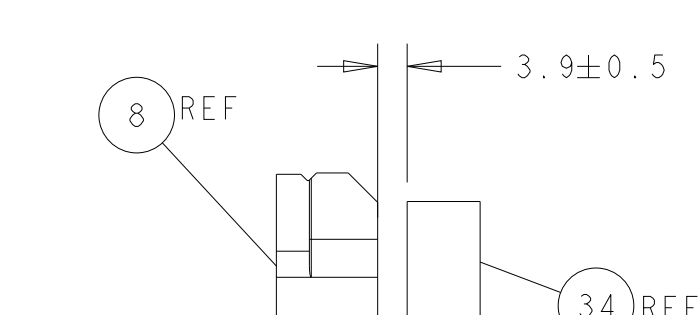
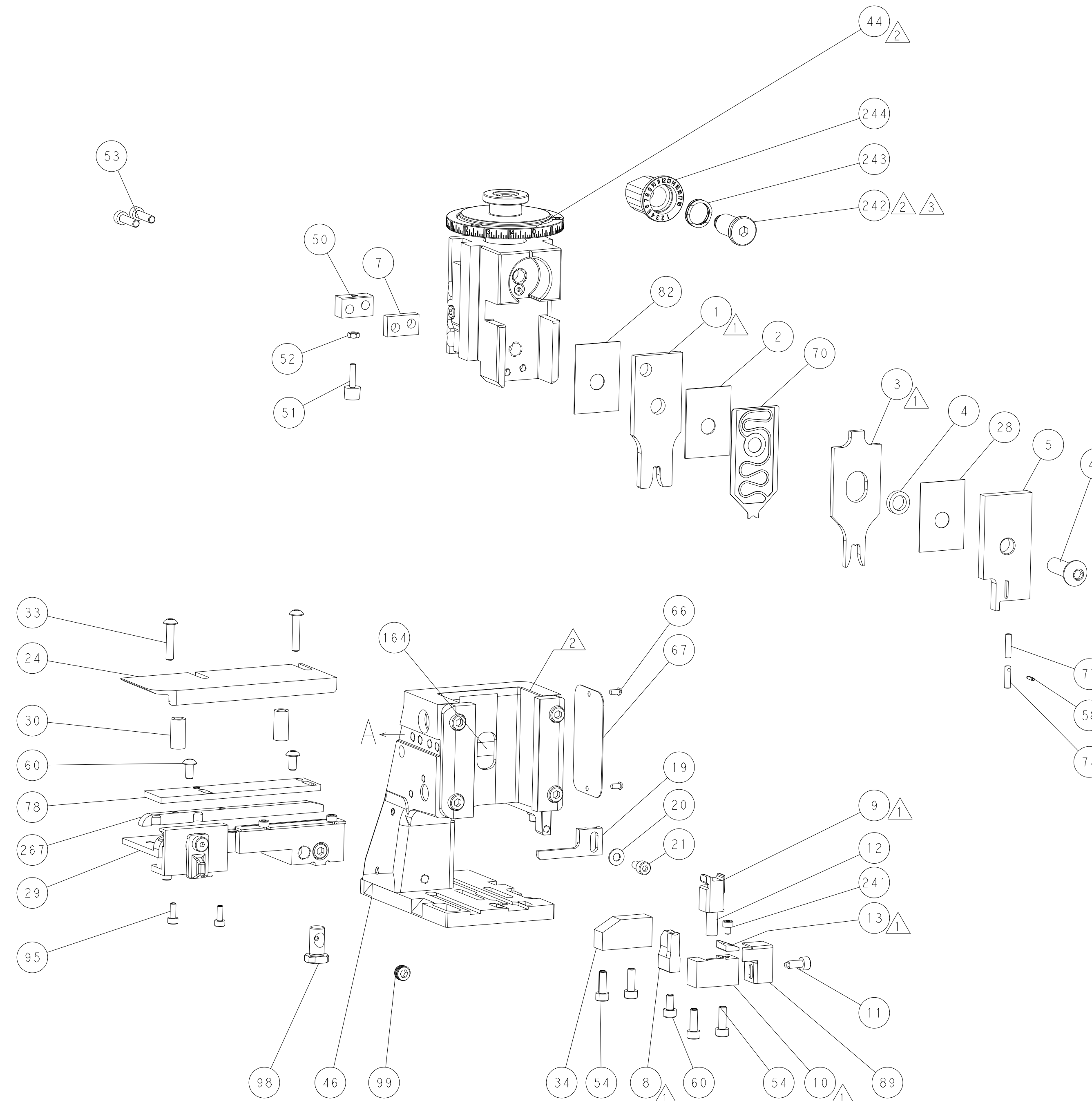
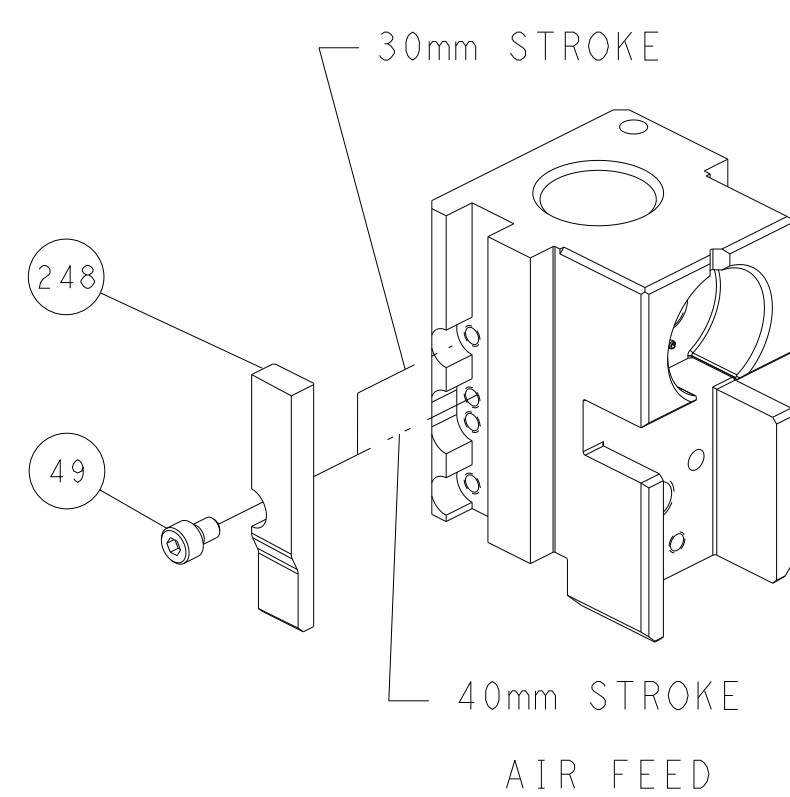


FEED SPRING SETTING POSITION (SHOWN FROM REAR SIDE)

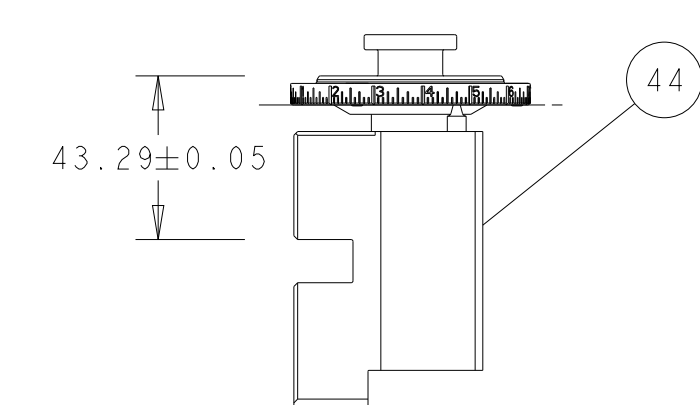


DETAIL A

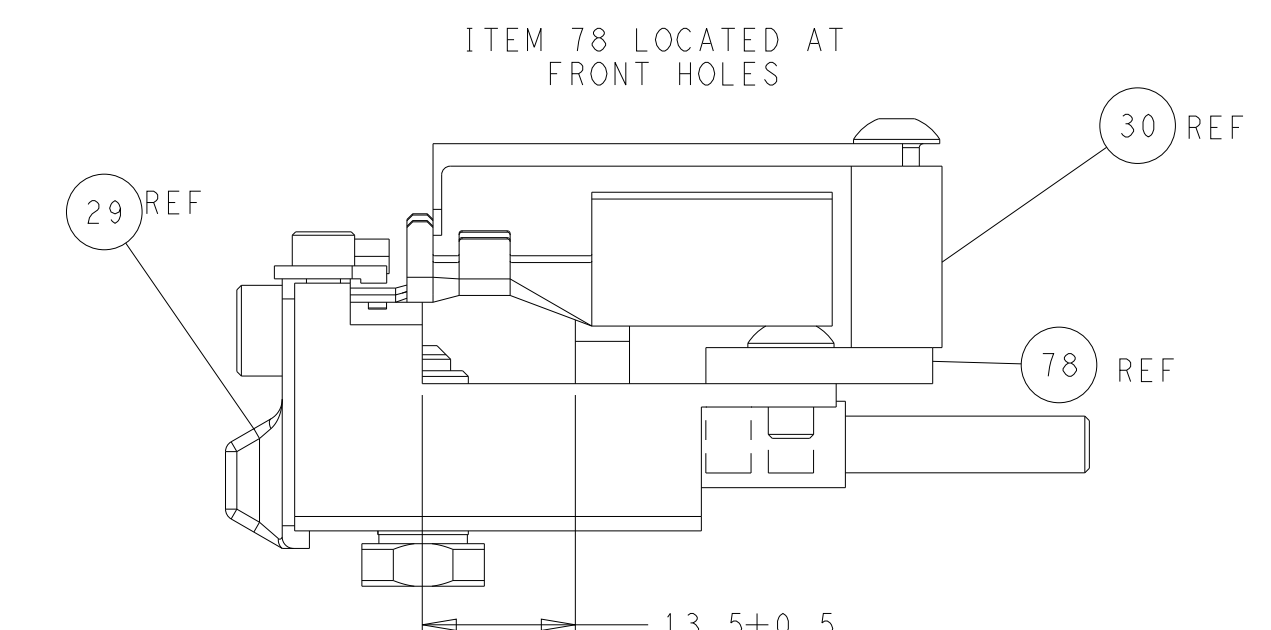
CAM POSITION



TERMINAL SUPPORT LOCATION



RAM SET-UP



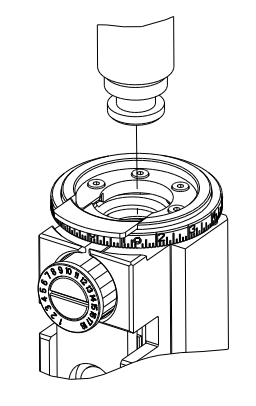
FEED TRACK POSITION GUIDE BY INSULATION BARREL

ATLANTIC VERSION
 Shown on sheets 1 of 4 & 2 of 4
 (Pacific version shown on sheets 3 of 4 & 4 of 4)

<small>THIS DRAWING IS UNPUBLISHED. RELEASED FOR PUBLICATION. ALL RIGHTS RESERVED. © 2000 BY TYCO ELECTRONICS CORPORATION.</small>		DWN: HOFFNER 11OCT2011 CHK: T. ELBIN 12OCT2011 APVD: T. ELBIN 12OCT2011	TE Connectivity Harrisburg, PA 17105-3608
DIMENSIONS: mm TOLERANCES UNLESS OTHERWISE SPECIFIED: 0 PLC ± 1 PLC ± 2 PLC ± 3 PLC ± 4 PLC ± ANGLES FINISH ±		NAME: Ocean Side Feed Applicator PRODUCT SPEC: - APPLICATION SPEC: - WEIGHT: - SCALE: 1:2	SIZE: A1 CAGE CODE: 00779 DRAWING NO: 2151492 SHEET 2 OF 4 REV D
MATERIAL: - FINISH: -		Customer Accessible Production Drawing	

PART NUMBER	REVISION	DESCRIPTION	FEED TYPE
2-2151492-2	D	FINE CRIMP HEIGHT ADJUST	PNEUMATIC
7-2151492-7	A	CRIMP TOOLING KIT	-

PACIFIC VERSION TERMINATOR
 INTERFACE ADAPTER



APPLICATOR DATA		
CRIMP	SIZE	TYPE
WIRE	3.94 mm [.155]	F
INSUL	5.33 mm [.210]	F

APPLICATOR INSTRUCTIONS
 408-35042

TERMINAL DATA: TE TERMINAL TYCO ELECTRONICS CRIMP SPECIFICATION	
TERMINAL NAME: MAXI-POWER-TIMER CONTACT	
WIRE STRIP LENGTH 5.89-6.71 mm [.232-.264 IN]	INSULATION DIAMETER RANGE Ø3.30-4.50 mm [.130-.177 IN]
TERMINAL APPLICATION SPECIFICATION 114-18075 Rev A1	
TERMINALS APPLIED	
TE TERMINAL 962928-1	TE TERMINAL 962928-3
TE TERMINAL 2-962928-1	TE TERMINAL 9-962928-1

WIRE SIZE	CRIMP HEIGHT mm [INCH]	CRIMP HEIGHT REFERENCE SETTING
4.00mm2	2.71+/-0.05 [.107+/-0.002]	7.3
3.50mm2	2.62+/-0.05 [.103+/-0.002]	8.7
3.00mm2	2.52+/-0.05 [.099+/-0.002]	9.7
2.50mm2	2.42+/-0.05 [.095+/-0.002]	10.7



- 1 RECOMMENDED SPARE PARTS
 - 2 REFER TO SUPPLIED INSTRUCTION SHEET FOR CLEANING, LUBRICATION AND STORAGE OF APPLICATOR.
 - 3 APPLY PART NUMBER 2-23419-6 LOCTITE TO THREADS OF ITEM 242.
 - 4 CRIMP HEIGHT REFERENCE SETTING WAS THE SETTING USED WHEN THE APPLICATOR WAS QUALIFIED AT THE FACTORY. ADJUSTMENT MAY BE NECESSARY WHEN RUNNING APPLICATOR IN THE FIELD.
 - 5 TERMINAL PITCH NOT COMPATIBLE WITH MECHANICAL FEED.
6. UNLESS SPECIFIED OTHERWISE TORQUE VALUES SHALL BE USED PER DOCUMENT, 101-35000.

***WARNING**
 ON INSTALLATION, SET WIRE DISC TO CRIMP HEIGHT REFERENCE SETTING FOR LARGEST WIRE SIZE. CRIMP HEIGHT REFERENCE SETTINGS GREATER THAN THE VALUE SHOWN MAY CAUSE DAMAGE TO THE CRIMP TOOLING. REFER TO THE INSTRUCTION SHEET FOR PROPER SETUP AND ADJUSTMENTS.

PACIFIC VERSION
 Shown on sheets 3 of 4 & 4 of 4
 (Atlantic version shown on sheets 1 of 4 & 2 of 4)

LOC	DIST	REV	DATE	BY	APPD
A	66				

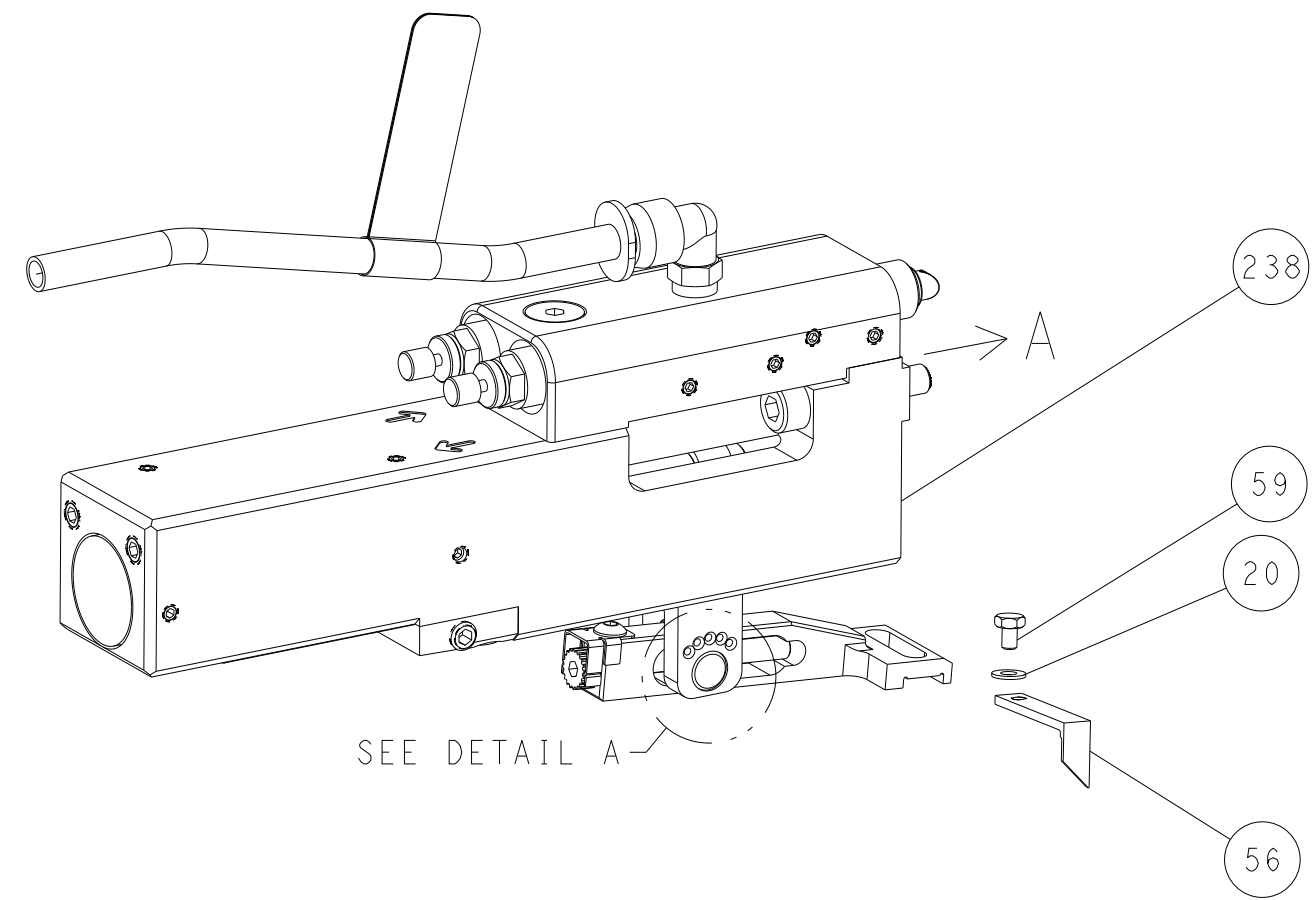
REV	DATE	DESCRIPTION	DATE	BY	APPD
-	1	1901085-8	FENCE		267
-	1	2119082-9	CAM, SNAIL, INSULATION ADJUSTMENT		244
-	1	2079764-1	WASHER, WAVE SPRING, CREST-TO-CREST		243
-	1	2119083-1	RETAINER, INSULATION DIAL		242
-	1	7-18023-7	SCR, SKT HD CAP M3 X 4.0		241
-	1	2844940-2	AIR FEED MODULE		238
-	REF	994970-2	COUNTER, MAGNETIC		164
-	1	2119641-2	FEED CAM, AIR FEED		151
-	1	2168083-8	SCR, SKT HD CAP, RoHS, M4 X 16		144
-	4	2168083-9	SCR, SKT HD CAP, RoHS, M4 X 20		143
-	1	1-1803583-0	APPLICATOR BASIC ASSEMBLY, SF		141
-	1	1803516-1	RAM ASSEMBLY, SF PACIFIC		140
-	1	2844908-1	SCREW, LOCKING		99
-	1	2844907-1	POST, LOCKING		98
-	2	2168083-1	SCR, SKT HD CAP, RoHS, M3 X 8.0		95
-	1	318563-1	GUARD, FRONT CHIP		89
-	1	455888-5	SPACER, CRIMPER		82
-	1	1803096-1	EXTENSION PLATE		78
-	1	1-22278-0	SPRING, COMPRESSION		77
-	1	854769-4	HOLDER, INS		74
-	1	1803607-3	DOCUMENTATION PACKAGE		71
-	1	2119791-6	DEPRESSOR, WIRE		70
-	1	2119740-1	TAG IDENTIFICATION		67
-	2	2168078-1	SCREW, DRIVE, RH, RoHS, 2 x .188		66
-	2	2079383-4	SCR, BHSC, RoHS (M4 X 8)		60
-	1	5-18022-5	SCR, HEX HD CAP, M4 X 6.0		59
-	1	21028-2	PIN, SLOTTED SPRING .062 X .250		58
-	1	1-1338683-7	FEED PAWL		56
-	2	2168083-8	SCR, SKT HD CAP, RoHS, M4 X 16		53
-	1	5018030-1	NUT, HEX, REG, RoHS, M3		52
-	1	1-811242-0	BUMPER, HOLD DOWN		51
-	1	690753-2	SPACER, TONKER		50
-	1	18023-9	SCR, SKT HD CAP M4 X 6.0		49
-	1	1803602-1	SCR, BHSC, RoHS (M8 X 25)		41
-	1	1-1752356-0	SUPPORT, TERMINAL		34
-	2	2079383-5	SCR, BHSC, RoHS (M4 X 20)		33
-	2	3-2844962-3	SPACER, CYLINDRICAL, STRIP GUIDE		30
-	1	2844992-2	ASSEMBLY, STRIP GUIDE		29
-	1	455888-4	SPACER, CRIMPER		28
-	1	2-1320928-3	STRIP GUIDE		24
-	1	2168083-2	SCR, SKT HD CAP, RoHS, M4 X 8.0		21
-	2	1-18028-2	WASHER, FLAT, REG M4		20
-	1	2119533-1	STRIPPER, SIDE FEED		19
-	1	2119806-1	INSERT, SHEAR		13
-	1	3-22280-3	SPRING, COMPRESSION		12
-	1	1-356885-4	STOP, SHEAR		11
-	1	2119805-1	SHEAR HOLDER, FRONT		10
-	1	454276-5	FLOATING SHEAR, FRONT		9
1	1	1633927-1	ANVIL, COMBINATION		8
-	1	5-240641-0	SPACER		7
-	1	1-2119780-2	DEPRESSOR, SHEAR		5
-	1	238011-2	BLOCK, CRIMPER SPACER		4
1	1	1633961-1	CRIMPER, INSULATION F PREMIUM		3
-	1	455888-8	SPACER, CRIMPER		2
1	1	456415-1	CRIMPER, WIRE .155 F PREMIUM		1

DIMENSIONS: mm		TOLERANCES UNLESS OTHERWISE SPECIFIED:		DWG: HOFFNER 11OCT2011		CHK: T. ELBIN 12OCT2011		APVD: T. ELBIN 12OCT2011		NAME: Ocean Side Feed Applicator	
0 PLC ±		1 PLC ±		2 PLC ±		3 PLC ±		4 PLC ±		SIZE: A1	
ANGLES		FINISH		WEIGHT		SCALE: 1:2		SHEET: 3 OF 4		REV: D	

LOC		DIST		REVISIONS			
A	66	P	LTM	DESCRIPTION	DATE	OWN	APVD
		-		SEE SHEET 1			

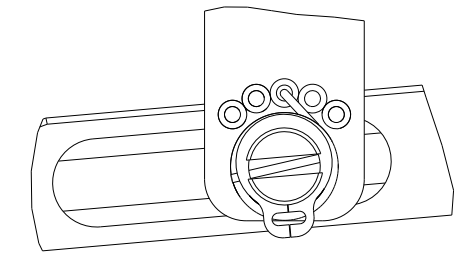
FEED TYPE

PNEUMATIC



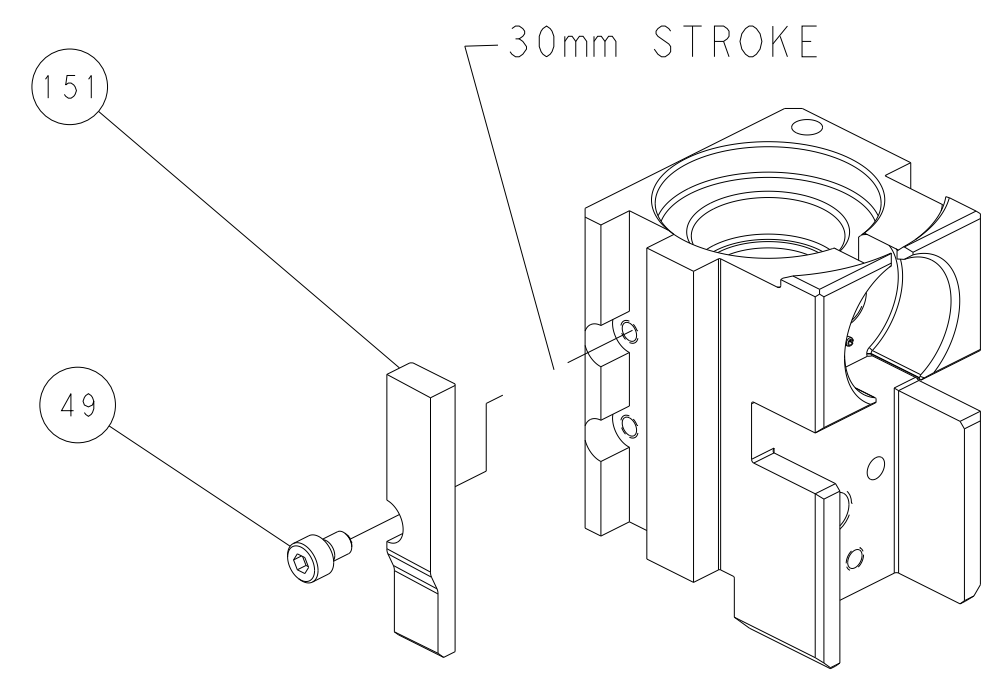
SEE DETAIL A

FEED SPRING SETTING POSITION (SHOWN FROM REAR SIDE)

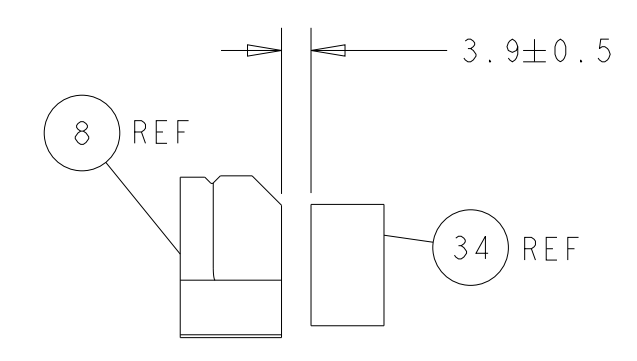
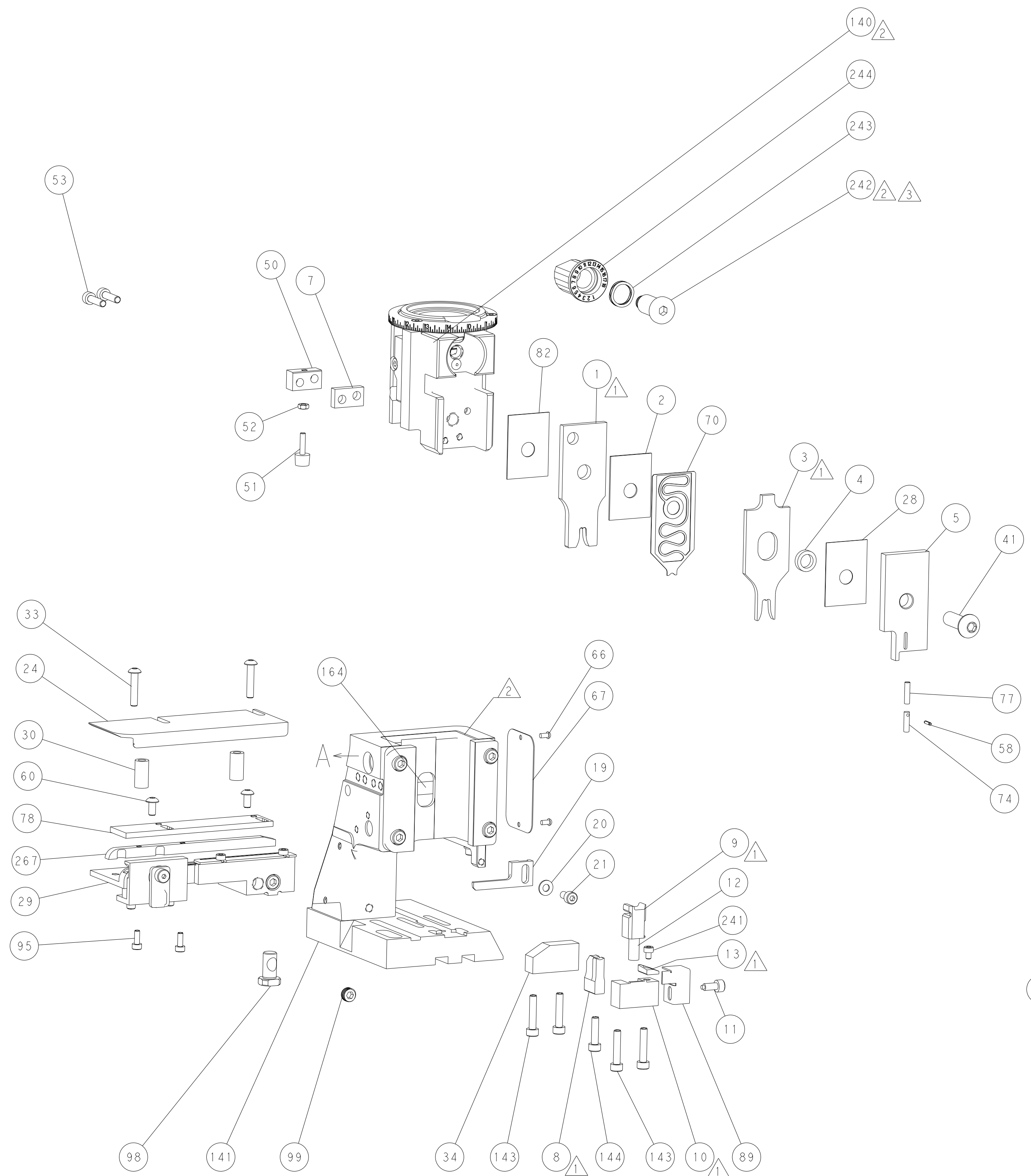


DETAIL A

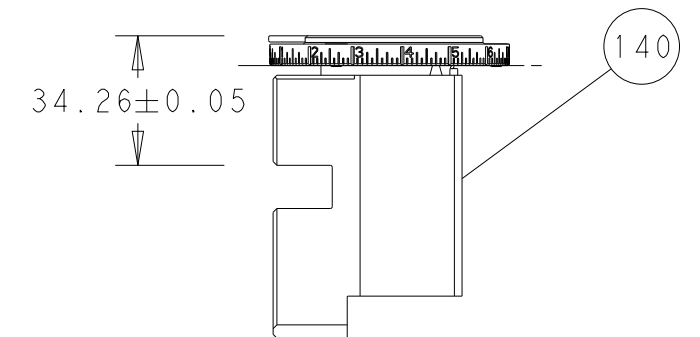
CAM POSITION



AIR FEED

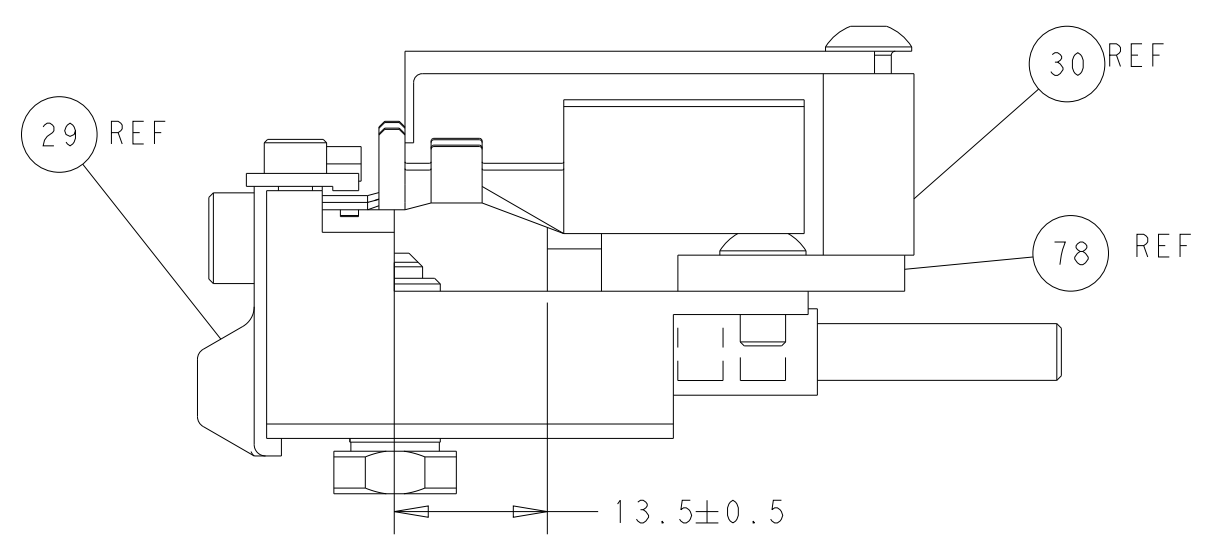


TERMINAL SUPPORT LOCATION



RAM SET-UP

ITEM 78 LOCATED AT FRONT HOLES



FEED TRACK POSITION GUIDE BY INSULATION BARREL

PACIFIC VERSION
 Shown on sheets 3 of 4 & 4 of 4
 (Atlantic version shown on sheets 1 of 4 & 2 of 4)

<small>THIS DRAWING IS UNPUBLISHED. RELEASED FOR PUBLICATION 20. COPYRIGHT 20 BY TYCO ELECTRONICS CORPORATION. ALL RIGHTS RESERVED.</small>		DWN: HOFFNER 11OCT2011 CHK: T. ELBIN 12OCT2011 APVD: T. ELBIN 12OCT2011	TE Connectivity Harrisburg, PA 17105-3608
DIMENSIONS: mm TOLERANCES UNLESS OTHERWISE SPECIFIED: 0 PLC ±. 1 PLC ±. 2 PLC ±. 3 PLC ±. 4 PLC ±. ANGLES FINISH ±. MATERIAL: .	NAME: Ocean Side Feed Applicator APPLICATION SPEC: . SIZE: A1 CAGE CODE: 00779 DRAWING NO: C=2151492 SCALE: 1:2 SHEET: 4 OF 4 REV: D	RESTRICTED TO: . WEIGHT: . Customer Accessible Production Drawing	SHEETS 1 & 2 ARE NOT REQUIRED FOR PACIFIC VERSION