

THIS DRAWING IS UNPUBLISHED. RELEASED FOR PUBLICATION
 © COPYRIGHT - By - ALL RIGHTS RESERVED.

| LOC | DIST | REVISIONS | | | | | |
|-----|------|-----------|-----|---------------------------|---------|-----|------|
| FT | 0 | P | LTR | DESCRIPTION | DATE | DWN | APVD |
| | | A | | REVISED PER ECO-11-023039 | 16FEB12 | KH | MS |

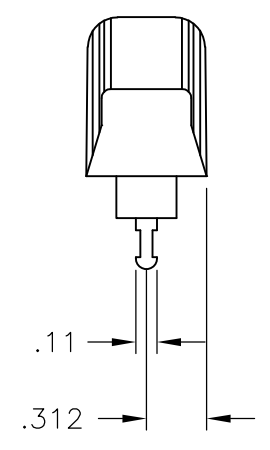
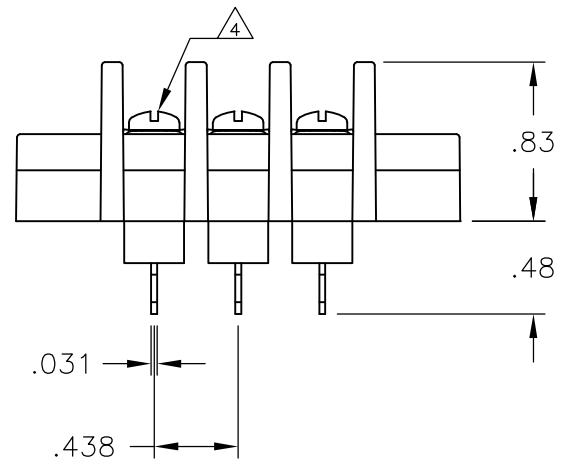
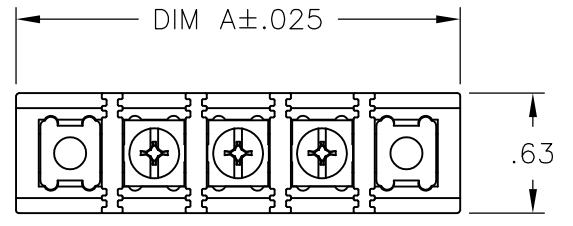
NOTES:

MECHANICAL:
 HOUSING: THERMOPLASTIC, UL94V-2, BLACK.
 TERMINALS: BRASS, BRIGHT TIN PLATE.
 SCREWS: 6-32, STEEL, PLATED .0002 MIN ZINC W/
 CLEAR CHROMATE COATING. UNLESS OTHERWISE
 SPECIFIED.
 TIGHTENING TORQUE: 8 IN-LB.

ELECTRICAL:
 MAXIMUM CURRENT: 20A.
 OPERATING VOLTAGE: 600V
 WIRE RANGE: 12-22 AWG

ENVIRONMENTAL:
 OPERATING TEMP.: -60°C TO 105°C

- 1 SCREWS ARE STAINLESS STEEL.
- 2 PRELIMINARY PART NUMBER.
- 3 SCREWS ARE PACKAGED SEPARATELY.
- 4 ALL SCREWS BOTTOMED, TORQUE 2 TO 4 IN-LBS



| DIM A | NO. OF POS. | CATALOG NUMBER | PART NUMBER |
|--------|-------------|----------------|-------------|
| 11.937 | 25 | SSB7TG250101 | 2-1546975-5 |
| 11.500 | 24 | SSB7TG240101 | 2-1546975-4 |
| 11.062 | 23 | SSB7TG230101 | 2-1546975-3 |
| 10.625 | 22 | SSB7TG220101 | 2-1546975-2 |
| 10.187 | 21 | SSB7TG210101 | 2-1546975-1 |
| 9.750 | 20 | SSB7TG200101 | 1-1546561-1 |
| 9.312 | 19 | SSB7TG190101 | 1-1546975-9 |
| 8.875 | 18 | SSB7TG180101 | 1-1546975-8 |
| 8.437 | 17 | SSB7TG170101 | 1-1546975-7 |
| 8.000 | 16 | SSB7TG160100 | 2-1437417-8 |
| 8.000 | 16 | SSB7TG160101 | 1-1546975-6 |
| 7.562 | 15 | SSB7TG150101 | 1-1546975-5 |
| 7.125 | 14 | SSB7TG140103 | 2-1546975-6 |
| 7.125 | 14 | SSB7TG140101 | 1-796602-8 |
| 6.687 | 13 | SSB7TG130101 | 1-1546975-3 |
| 6.250 | 12 | SSB7TG120101 | 1546561-9 |
| 5.812 | 11 | SSB7TG110101 | 1-1546975-1 |
| 5.375 | 10 | SSB7TG100101 | 9-1437416-9 |
| 4.937 | 9 | SSB7TG090101 | 3-796602-9 |
| 4.500 | 8 | SSB7TG080101 | 9-1437416-7 |
| 4.062 | 7 | SSB7TG070101 | 9-1437416-6 |
| 3.625 | 6 | SSB7TG060101 | 1546975-6 |
| 3.187 | 5 | SSB7TG050101 | 1546975-5 |
| 2.750 | 4 | SSB7TG040101 | 9-1437416-5 |
| 2.312 | 3 | SSB7TG030101 | 1546975-3 |
| 1.875 | 2 | SSB7TG020101 | 1546975-2 |
| 1.437 | 1 | SSB7TG010101 | 1546975-1 |

| | | | | |
|---|--|------------------------|-------------------------|-----------------|
| THIS DRAWING IS A CONTROLLED DOCUMENT. | | DWN S SCHL GEL 9/28/04 | TE Connectivity | |
| DIMENSIONS: INCHES | | CHK S YODER 9/28/04 | | |
| TOLERANCES UNLESS OTHERWISE SPECIFIED: | | APVD S YODER 9/28/04 | | |
| 0 PLC ± - 1 PLC ± - 2 PLC ± .02 3 PLC ± .010 4 PLC ± - ANGLES ± 1° | | NAME | | |
| MATERIAL - | | FINISH - | SSB7TGXX0101 | |
| | | PRODUCT SPEC - | SIZE A3 | CAGE CODE 00779 |
| | | APPLICATION SPEC - | DRAWING NO C-1-796602-8 | RESTRICTED TO - |
| | | WEIGHT - | SCALE NTS | SHEET 1 OF 1 |
| | | CUSTOMER DRAWING | REV A | |