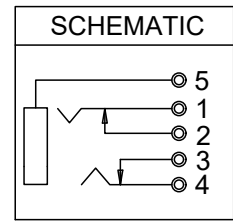
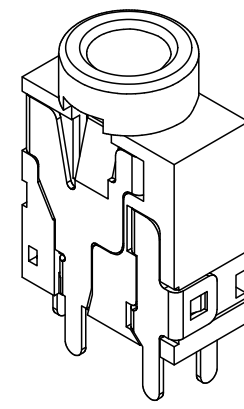
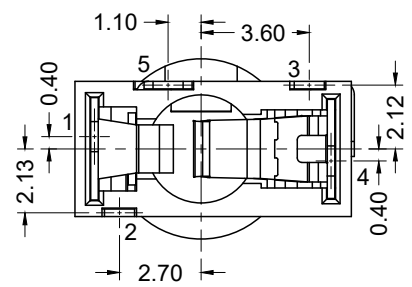


RECOMMENDED PCB LAYOUT (BOTTOM VIEW)



**Material and Finish**

Housing Material-  
Thermoplastic  
UL 94V-0 Rated

Contact Material-  
Copper Alloy  
Tin Plating

**Electrical Characteristics**

Contact Resistance:  
Before Test: 50 milliohms max.  
After Durability Test:  
100 milliohms max.

Rated Voltage: 16V DC

Rated Current: 0.3A

Insulation Resistance:  
100 Megohms min.  
at 500V DC

Dielectric Strength:  
500V AC RMS for 1 minute

Operating Temp:  
-25°C to +85°C

PART NO:	COLOR	
STX-3790-5N	BLACK	
STX-3790-5N-577C	PANTONE 577C (GREEN)	
STX-3790-5N-284C	PANTONE 284C (BLUE)	
<del>STX-3790-5N-157C</del>	<del>PANTONE 157C (ORANGE)</del>	Discontinued
<del>STX-3790-5N-701C</del>	<del>PANTONE 701C (PINK)</del>	Discontinued

Tolerances

X.X ± 0.25  
X.XX ± 0.15  
Unless Stated  
Otherwise



REV.	DATE	DESCRIPTION	REV. BY	CHK. BY	DRAWN BY	DATE
A2	1/23/08	Add Spec info.	WILL H.	H. MA	WILL H.	10/31/07
A3	11/18/08	Correct Part Number	S. Vien	H. MA		
A4	09/14/09	ECO #09-070	S. Vien	H. MA	UNITS	mm
A5	10/28/13	ECO #13-085	D. Gih	H. MA		
A6	08/14/18	Update Address	D. Shehan	N/A	mm	
A7	10/12/22	Add Clearance Hole	C. Kelleher	Carl Furumasu		

**STX-3790-5N**

3.5mm Vertical Mount, 5 pin

RoHS Compliant

