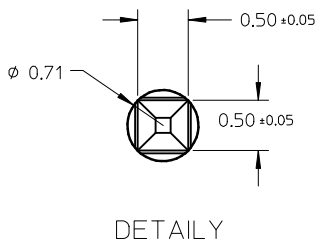
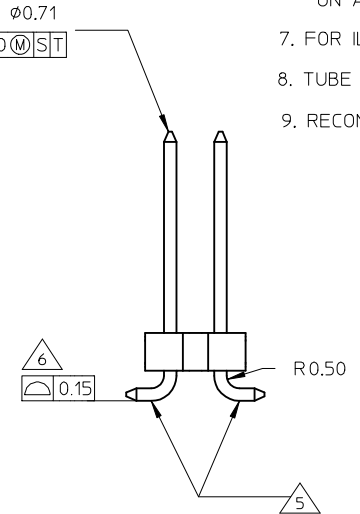
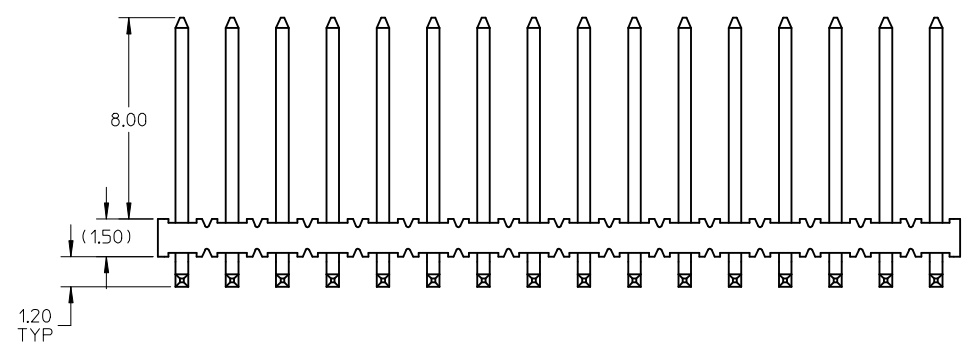
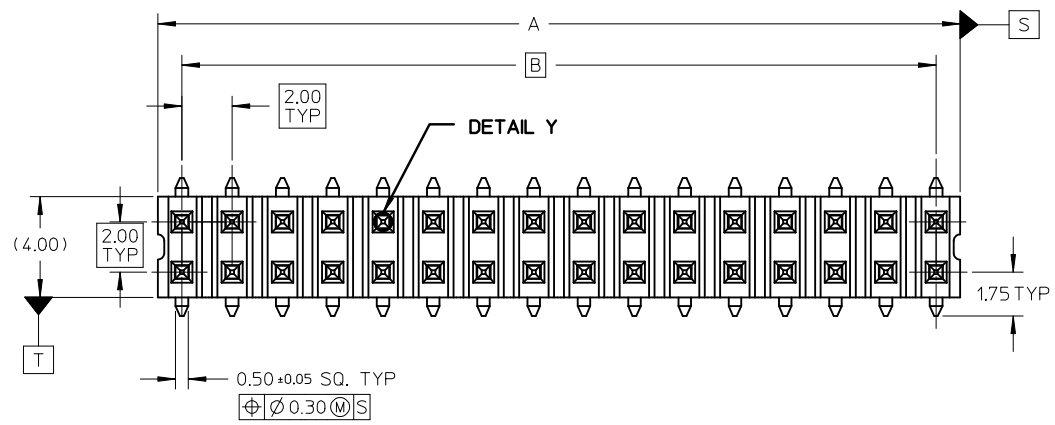


10 9 8 7 6 5 4 3 2 1



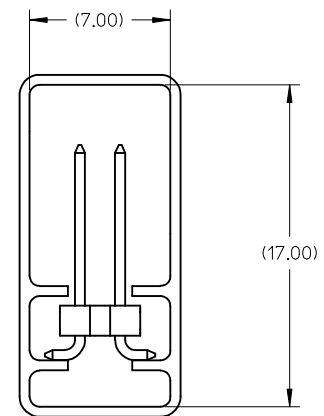
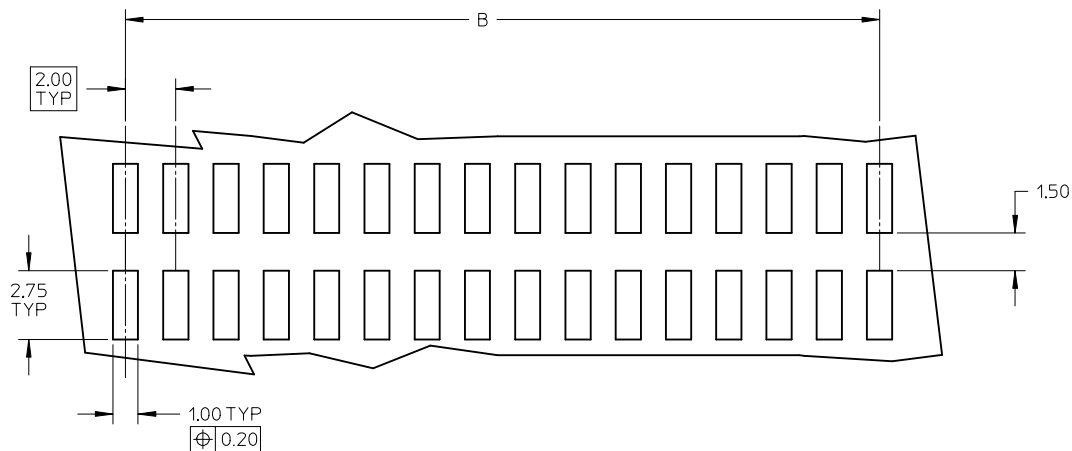
- NOTE:**
- MATERIAL:  
HSG & CAP - HIGH TEMPERATURE THERMOPLASTIC, UL 94V-0, COLOUR BLACK  
PIN - 0.50 SQ PHOSPHOR BRONZE
  - PLATING:  
0.38um MIN GOLD PLATE AT CONTACT AREA,  
TIN PLATE AT SOLDER AREA,  
BOTH OVER NICKEL UNDERPLATE
  - PIN PUSHOUT FORCE: 1KG MIN IN EITHER DIRECTION
  - PRODUCT SPEC PS-87761-100 APPLIES.
  - BEND DEPRESSION IS ACCEPTABLE SO LONG AS IT DOES NOT AFFECT THE OVERALL COPLANARITY OF TAIL.
  - COPLANARITY IS TO BE MEASURED BY RESTING THE SOLDER TAIL ON A FLAT SURFACE.
  - FOR ILLUSTRATION PURPOSES, 32CKT IS SHOWN
  - TUBE LENGTH IS 560MM REF STANDARD.
  - RECOMMENDED PCB BOARD THK IS 1.60±0.10 MM.

9 8 7 6 5 4 3 2 1

<b>REVISED TUBE SPEC</b> EC NO: S2007-0829 2007/04/10 DRWN:SKL IM01 2007/04/10 CHKD:GWLAM 2007/04/12 APPR:KNLEE 2007/04/17	<b>QUALITY SYMBOLS</b> = 0 = 0	<b>GENERAL TOLERANCES (UNLESS SPECIFIED)</b>		<b>DIMENSION STYLE</b> MM ONLY	<b>SCALE</b> NTS	<b>DESIGN UNITS</b> METRIC	THIRD ANGLE PROJECTION
		4 PLACES ± --- ± --- 3 PLACES ± --- ± --- 2 PLACES ± 0.2 ± --- 1 PLACE ± --- ± ---	mm INCH	DRAWN BY DATE KSEE 2004/04/20	TITLE CUSTOM HEADER MGRID 2MM HEADER SMT		
		ANGULAR ± 3 °	DRAFT WHERE APPLICABLE MUST REMAIN WITHIN DIMENSIONS	CHECKED BY DATE PTLIM 2004/04/22	APPROVED BY DATE SCLOW 2004/04/27		
		SEE TABLE	MATERIAL NO. DOCUMENT NO. MOLEX INCORPORATED SD-87759-157	SHEET NO. 1 OF 2			

THIS DRAWING CONTAINS INFORMATION THAT IS PROPRIETARY TO MOLEX INCORPORATED AND SHOULD NOT BE USED WITHOUT WRITTEN PERMISSION

10	9	8	7	6	5	4	3	2	1
PART NUMBER WITHOUT CAP IN TUBE	CKT SIZE	A	B						
87759-0010	32	31.90	30.00						
87759-0012	40	39.90	38.00						



**PART IN TUBE  
ORIENTATION**

<b>REVISED TUBE SPEC</b> EC NO: S2007-0829 DRWNSKL IM01 CHKD: CWLAM APPR: KWLEE	2007/04/10 2007/04/12 2007/04/17	DESCRIPTION REV	QUALITY SYMBOLS	GENERAL TOLERANCES (UNLESS SPECIFIED)	DIMENSION STYLE	SCALE	DESIGN UNITS	THIRD ANGLE PROJECTION															
			$\nabla = 0$ $\square = 0$	<table border="1"> <tr> <td></td> <td>mm</td> <td>INCH</td> </tr> <tr> <td>4 PLACES</td> <td>± ---</td> <td>± ---</td> </tr> <tr> <td>3 PLACES</td> <td>± ---</td> <td>± ---</td> </tr> <tr> <td>2 PLACES</td> <td>± 0.2</td> <td>± ---</td> </tr> <tr> <td>1 PLACE</td> <td>± ---</td> <td>± ---</td> </tr> </table>		mm	INCH	4 PLACES	± ---	± ---	3 PLACES	± ---	± ---	2 PLACES	± 0.2	± ---	1 PLACE	± ---	± ---	MM ONLY	NTS	METRIC	
				mm	INCH																		
			4 PLACES	± ---	± ---																		
3 PLACES	± ---	± ---																					
2 PLACES	± 0.2	± ---																					
1 PLACE	± ---	± ---																					
<table border="1"> <tr> <td>DRAWN BY</td> <td>DATE</td> </tr> <tr> <td>KSEE</td> <td>2004/04/20</td> </tr> <tr> <td>CHECKED BY</td> <td>DATE</td> </tr> <tr> <td>PTLIM</td> <td>2004/04/22</td> </tr> <tr> <td>APPROVED BY</td> <td>DATE</td> </tr> <tr> <td>SCLOW</td> <td>2004/04/27</td> </tr> </table>	DRAWN BY	DATE	KSEE	2004/04/20	CHECKED BY	DATE	PTLIM	2004/04/22	APPROVED BY	DATE	SCLOW	2004/04/27	TITLE		CUSTOM HEADER MGRID 2MM HEADER SMT								
DRAWN BY	DATE																						
KSEE	2004/04/20																						
CHECKED BY	DATE																						
PTLIM	2004/04/22																						
APPROVED BY	DATE																						
SCLOW	2004/04/27																						
B			DRAFT WHERE APPLICABLE MUST REMAIN WITHIN DIMENSIONS	SEE TABLE	MATERIAL NO. MOLEX INCORPORATED DOCUMENT NO. SD-87759-157	SHEET NO. 2 OF 2																	