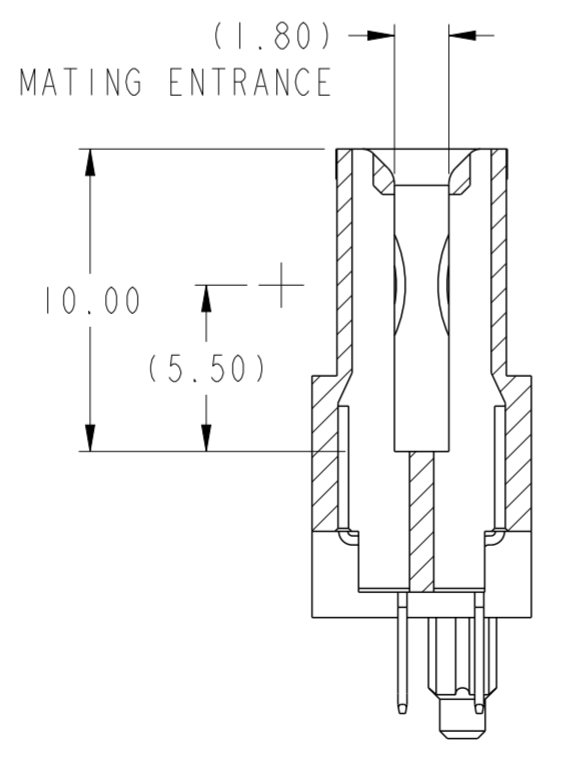


SECTION A-A
SCALE 4:1



SECTION B-B
SCALE 4:1

spec ref	-	dr	De-Ming Lu	2014/02/20	projection	mm	size	A2	scale	4:1
tolerance std	ISO 406 ISO 1101	eng	Sunny2 Liu	2016/05/06		mm	ecn no	ELX-DG-24036-1	rel level	Released
TOLERANCES UNLESS OTHERWISE SPECIFIED		chr	Terris Liu	2016/05/20						
surface	linear	0.X	±0.5		product family	VERT RECT 4P+20S OMITTED 10S	10129153	rev	B	
		0.XX	±0.25							
		0.XXX	±0.10							
	angular	0°	±2°	cat. no.	Product - Customer Drw	sheet 1 of 4				

PDS: Rev :B

STATUS:Released

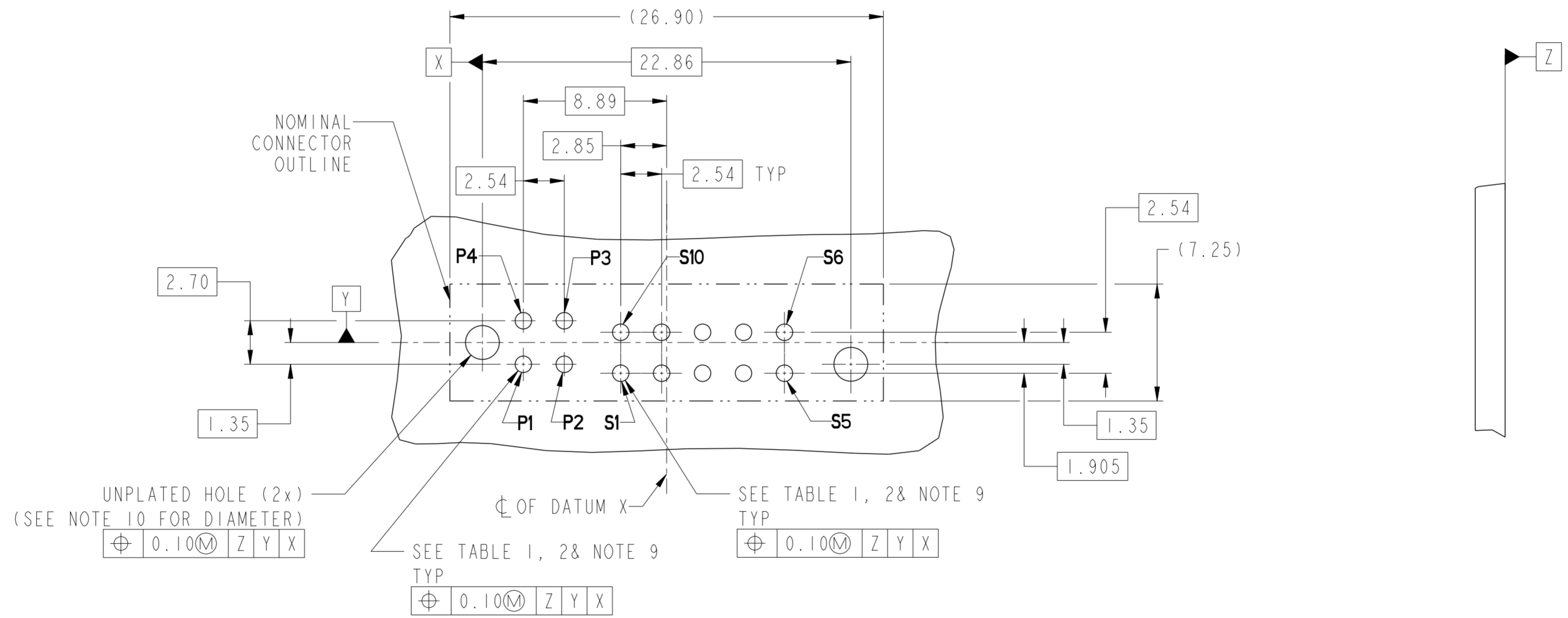
Printed: May 24, 2016

Amphenol
FCi

© 2016 AFci

CONTACT TYPE	TOP LAYER DESCRIPTION	TABLE 1 (HPCE / SOLDER TAILS) PLATED THROUGH-HOLE REQUIREMENTS				
		DRILLED HOLE DIAMETER	COPPER THICKNESS	TIN-LEAD THICKNESS	TIN THICKNESS	FINISHED HOLE DIAMETER
POWER & SIGNAL	TIN-LEAD	1.13 +/-0.03 (1.15 DRILL)	0.025 - 0.050	0.005 - 0.015	--	1.02 +/-0.08
	IMMERSION TIN	1.13 +/-0.03 (1.15 DRILL)	0.025 - 0.050	--	0.9 - 1.5um	1.02 +/-0.08
	COPPER (SEE NOTE 8)	1.13 +/-0.03 (1.15 DRILL)	0.025 - 0.050	--	--	1.02 +/-0.08

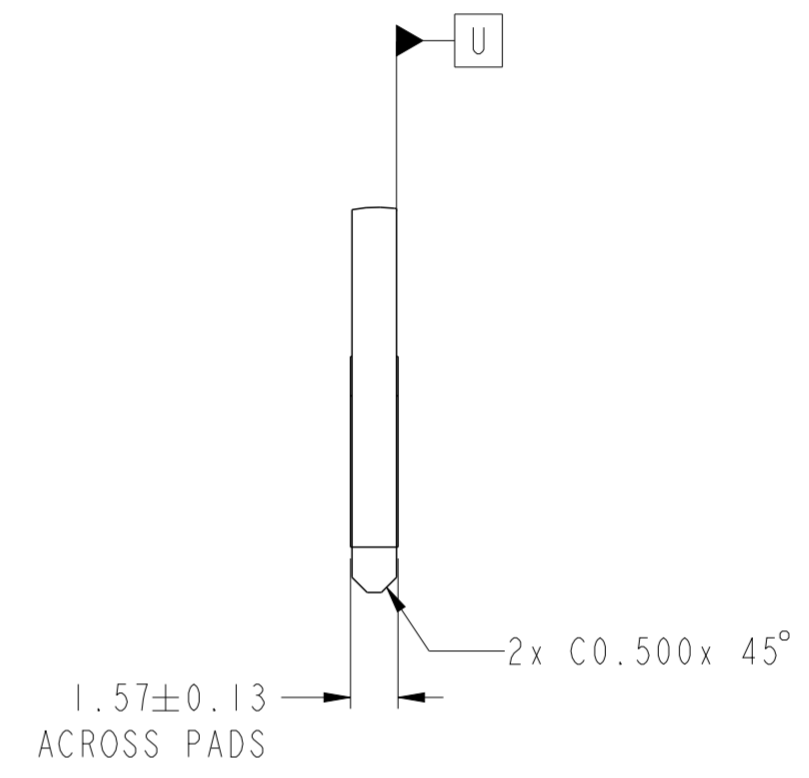
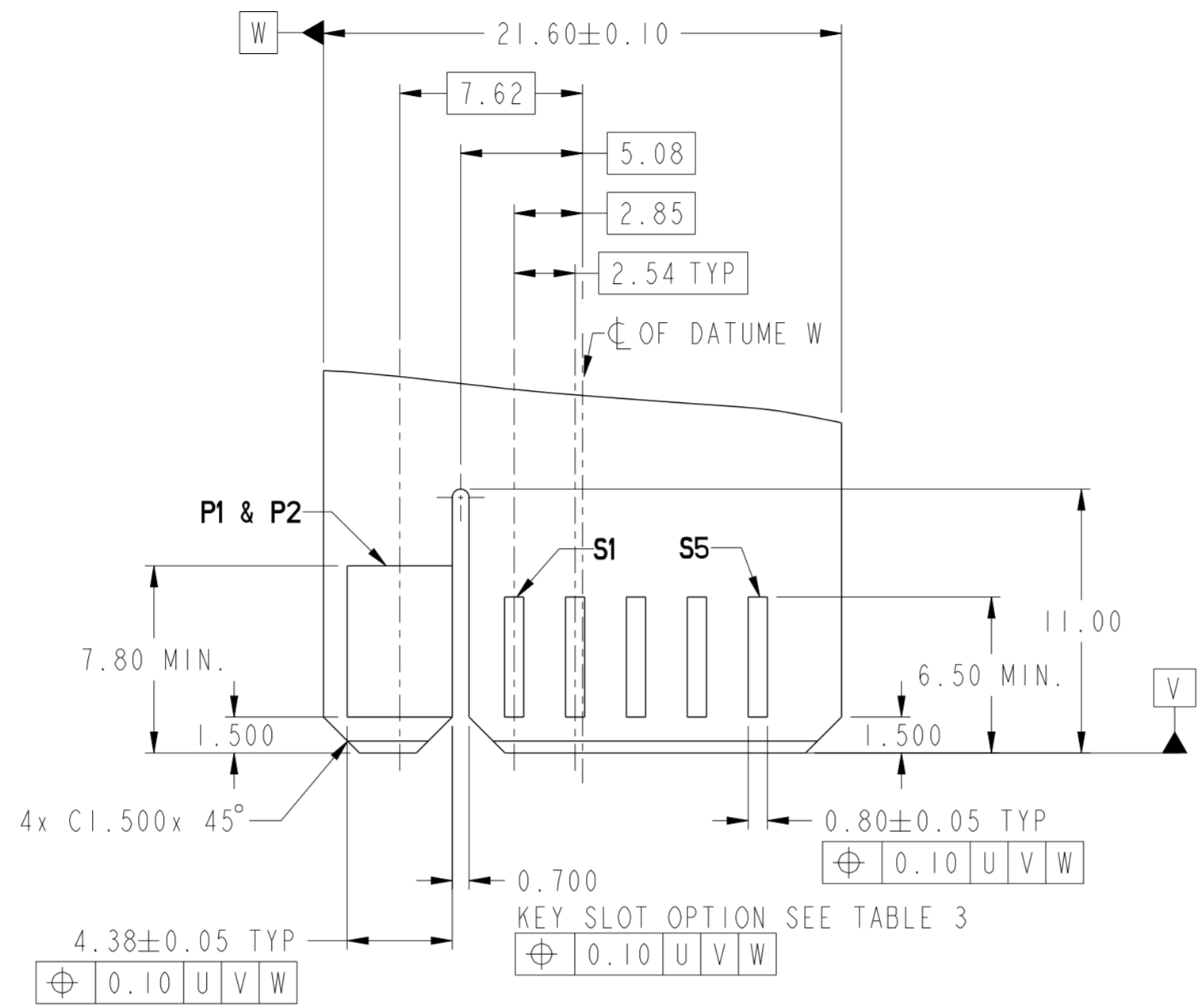
CONTACT TYPE	TOP LAYER DESCRIPTION	TABLE 2 (HPCE / PRESS-FIT TAILS) PLATED THROUGH-HOLE REQUIREMENTS				
		DRILLED HOLE DIAMETER	COPPER THICKNESS	TIN-LEAD THICKNESS	TIN THICKNESS	FINISHED HOLE DIAMETER
POWER & SIGNAL	TIN-LEAD	0.83 +/-0.03(0.85 DRILL)	0.025 - 0.050	0.005 - 0.015	--	0.72 +/-0.08
	IMMERSION TIN	0.83 +/-0.03(0.85 DRILL)	0.025 - 0.050	--	0.9 - 1.5um	0.75 +/-0.05
	COPPER (SEE NOTE 8)	0.83 +/-0.03(0.85 DRILL)	0.025 - 0.050	--	--	0.75 +/-0.05



spec ref	-	dr	De-Ming Lu	2014/02/20	projection	mm	size	A2	scale	4:1		
tolerance std	ISO 406 ISO 1101	eng	Sunny2 Liu	2016/05/06			ecn no	ELX-DG-24036-1		rel level	Released	
surface	TOLERANCES UNLESS OTHERWISE SPECIFIED linear 0.X ±0.5 0.XX ±0.25 0.XXX ±0.10 angular 0° ±2°	chr	Terris Liu	2016/05/20			product family	VERT RECT 4P+20S OMITTED 10S		10129153	rev	B
		appr	Pai-Ming Zheng	2016/05/24			cat. no.	Product - Customer Drw		sheet 2 of 4		

Amphenol FCI

© 2016 APCI



Amphenol
FCi

© 2016 AFci

spec ref	-	dr	De-Ming Lu	2014/02/20	projection	mm	size	A2	scale	4:1
tolerance std	ISO 406 ISO 1101	eng	Sunny2 Liu	2016/05/06			ecn no	ELX-DG-24036-1	rel level	Released
TOLERANCES UNLESS OTHERWISE SPECIFIED		chr	Terris Liu	2016/05/20						
		appr	Pai-Ming Zheng	2016/05/24						
surface	ISO 1302	linear	0.X	±0.5			product family	VERT RECT 4P+20S OMITTED 10S		
			0.XX	±0.25			cat. no.	10129153		
		angular	0°	±2°			Product - Customer Drw	sheet 3 of 4		

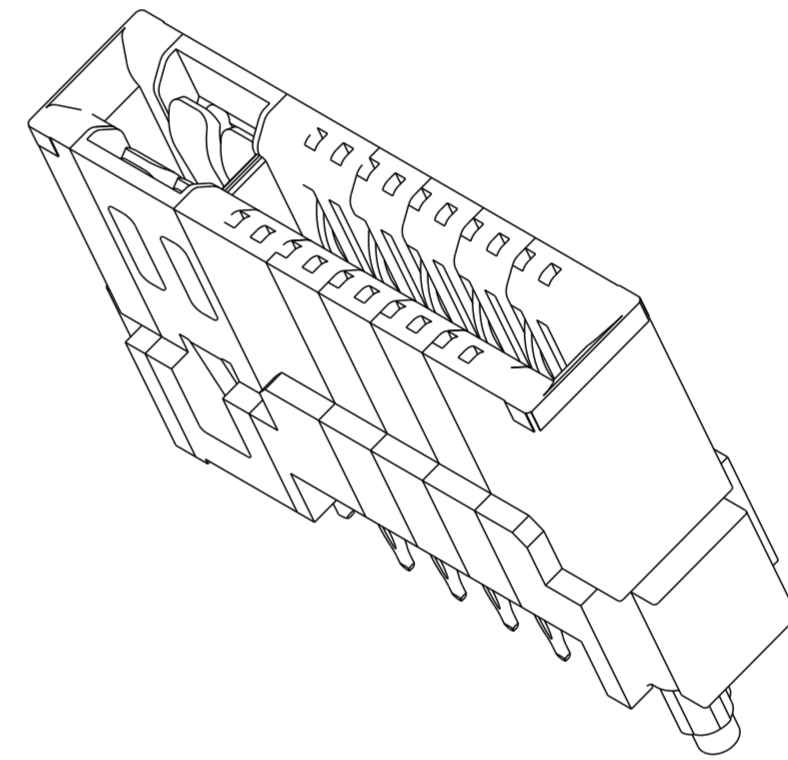
PDS: Rev :B

STATUS:Released

Printed: May 24, 2016

HPCE PART NUMBER (TABLE 3)

PART NUMBER	TAIL TYPE	ORIENTATION KEY	DIM "A" TYPICAL TAIL LENGTH	DIM "B" RECOMMENDED BOARD THICKNESS
10129153-001LF	SOLDER	YES	3.17 ±0.25	1.59 - 2.38
10129153-002LF	SOLDER	NO		
10129153-003LF	PRESS-FIT	YES	3.17±0.25	1.57 MIN
10129153-004LF	PRESS-FIT	NO		



NOTES:

1. CONNECTOR MATERIALS:
 HOUSING: HIGH TEMPERATURE THERMAL PLASTIC, BLACK
 UL 94V-0 COMPLIANT
 CONTACTS: HIGH PERFORMANCE COPPER ALLOY.
2. CONTACT FINISH REF. GS-12-604 SECTION 5.2.
3. PRODUCT SPECIFICATION: GS-12-604.
4. APPLICATION SPECIFICATION: GS-20-128.
5. PRODUCT MARKING ON HOUSING IN AREA SHOWN MEETS AFCI SPECIFICATION: GS-24-007.
6. PACKAGING MEETS FCI SPECIFICATION GS-14-937.
7. HOUSING COMPONENT WILL WITHSTAND EXPOSURE TO 260°C PEAK TEMPERATURE FOR 60 SECONDS IN A CONVECTION, INFRA-RED, OR VAPOR PHASE REFLOW OVEN.
8. COPPER PLATING THICKNESS IN CENTER OF VIA-HOLE CAN BE NO MORE THAN 0.003 LESS THAN OTHER AREAS.
9. ALL HOLE SIZES ARE FINISHED HOLE SIZES.
10. MOUNTING HOLES ARE UNPLATED
 Ø 2.40 +/- 0.1 FOR PRESS-FIT TAILS
 Ø 2.10 +/- 0.1 FOR SOLDER TAILS
11. PRESS FIT APPLICATION TOOL DRAWING : 10119453.
12. A SYMBOL $\triangle B$ WILL BE NEXT TO ANY DIMENSION, VIEW, OR NOTE WHICH HAS BEEN MODIFIED WITH THE CURRENT DRAWING REVISION.

spec ref	-	dr	De-Ming Lu	2014/02/20	projection	mm	size	A2	scale	4:1
tolerance std	ISO 406 ISO 1101	eng	Sunny2 Liu	2016/05/06			ecn no	ELX-DG-24036-1		
TOLERANCES UNLESS OTHERWISE SPECIFIED		chr	Terris Liu	2016/05/20			rel level	Released		
surface	linear	appr	Pei-Ming Zheng	2016/05/24	product family	VERT RECT 4P+20S OMITTED 10S				
	angular	Amphenol FCI		HIGH POWER CARD EDGE-SPECIAL DRAWING		10129153		rev B		
ISO 1302	0.X ±0.5 0.XX ±0.25 0.XXX ±0.10	cat. no.		Product - Customer Drw		sheet 4 of 4				