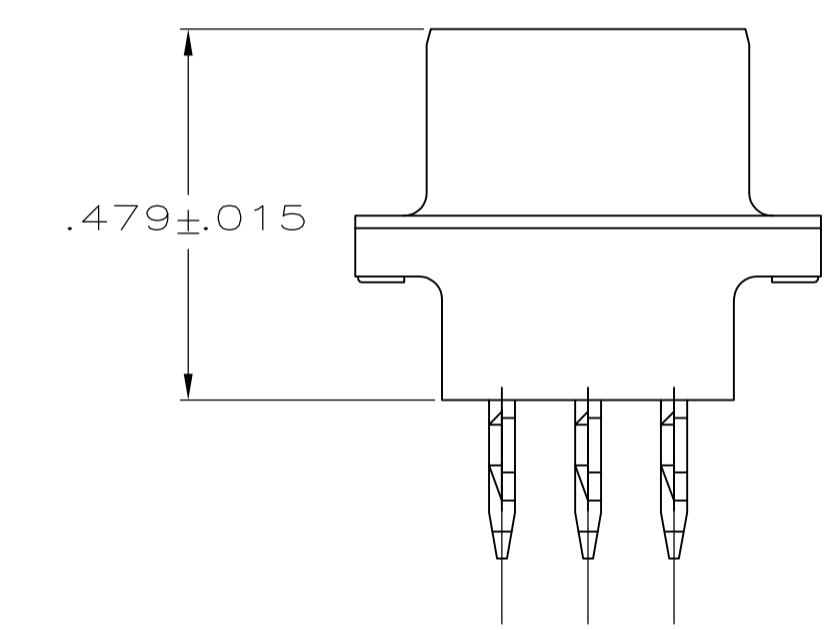
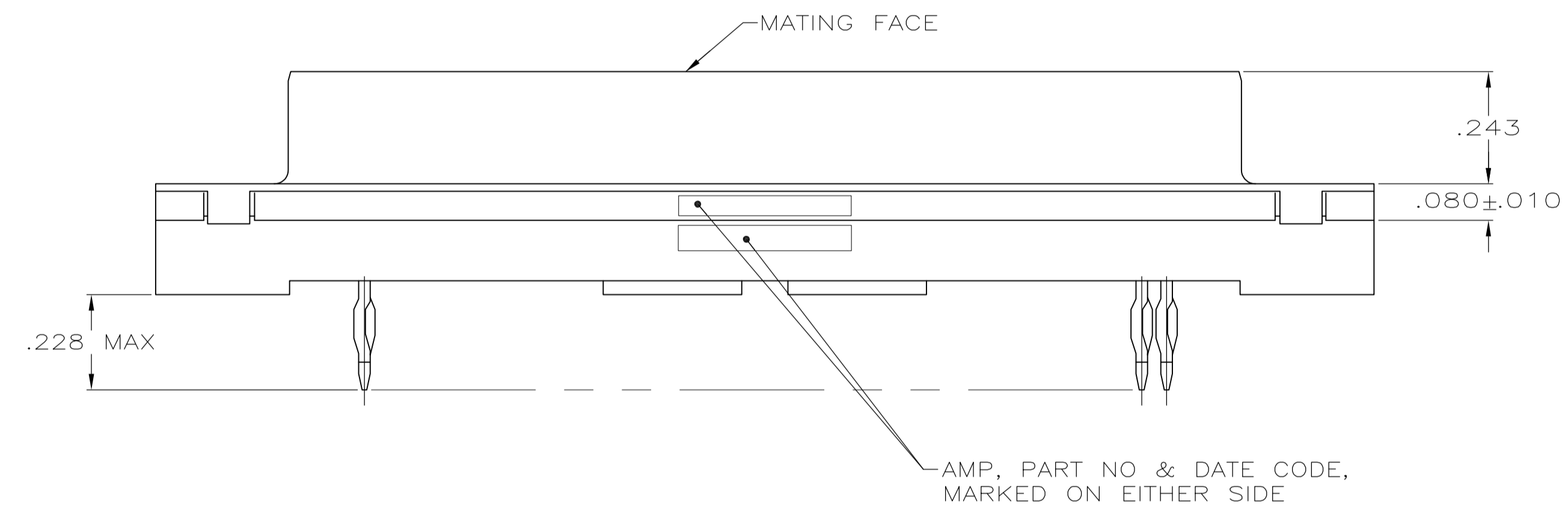


- 1 FOR USE WITH .093 MINIMUM THICK PRINTED CIRCUIT BOARD. REFER TO APPLICATION SPECIFICATION FOR PRINTED CIRCUIT BOARD LAYOUT DIMENSIONS AND FINISH RECOMMENDATIONS.
- 2 DUPLEX PLATED: GOLD FLASH ON MATING SURFACE, BRIGHT TIN OR BRIGHT TIN LEAD ON COMPLIANT PIN, ALL OVER NICKEL.
- 3 .000030 MINIMUM GOLD IN MATING AREA.  
.000100 MINIMUM TIN OR TIN-LEAD ON COMPLIANT PIN.  
ALL OVER .000050 MINIMUM NICKEL.  
OR  
GOLD FLASH OVER PALLADIUM NICKEL  
.000030 MINIMUM TOTAL IN MATING AREA.  
.000100 MINIMUM TIN OR TIN-LEAD ON COMPLIANT PIN.  
ALL OVER .000050 MINIMUM NICKEL.
- 4 PLATED .0002-.0004 BRIGHT TIN



SUPERSEDED BY 747143-2	3	747143-2
	2	747143-1
CONTACT FINISH		PART NO

THIS DRAWING IS A CONTROLLED DOCUMENT. DIMENSIONING AND TOLERANCING PER ASME Y14.5M-2009		DIN D. HARDY 04-12-94	TE Connectivity	
DIMENSIONS: INCHES		CHK R. STONE 04-26-94	RCPT ASSY, SIZE 5, 50 POSN, AMPLIMITE™ HDP, MDM PROFILE, W/ ACTION PIN CONT & METAL SHELL	
TOLERANCES UNLESS OTHERWISE SPECIFIED:		APVD	NAME	RESTRICTED TO
0 PLC ± -	1 PLC ± -	108-40014	PRODUCT SPEC	
2 PLC ± -	3 PLC ± .005	114-40026	APPLICATION SPEC	
4 PLC ± -	ANGLES ± °	A1	SIZE	
MATERIAL: HOUSING: FLAME RETARDANT 94V-0, PAIRED THERMOPLASTIC; COLOR: BLACK; CONTACTS: COPPER ALLOY; SHELL: CARBON STEEL	FINISH: CONTACTS: SEE TABLE; SHELL: 4	WEIGHT	000779	DRAWING NO
		CUSTOMER DRAWING	747143	SCALE 4:1 SHEET 1 OF 1 REV H