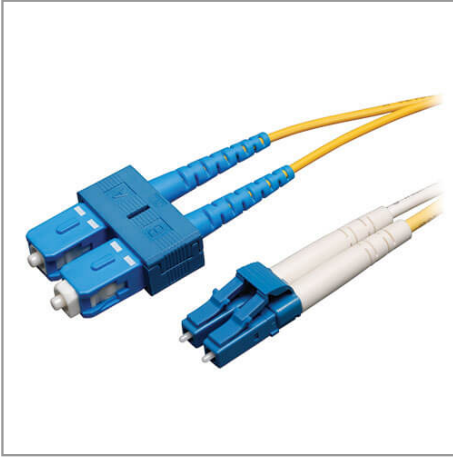


Duplex Singlemode 9/125 Fiber Patch Cable (LC/SC), 30 m (100 ft.)

MODEL NUMBER: **N366-30M**



Premium singlemode fiber optic cabling transmits fast, clear data signals through your LAN with twice the bandwidth throughput of multimode cable.

Description

The N366-30M Duplex Singlemode 9/125 Fiber Patch Cable transmits fast, clear data signals through your LAN with a higher bandwidth than multimode cable for up to twice the throughput. Designed for network equipment that requires singlemode fiber optic patch cables, this 30-meter (100-foot) cable has attenuation loss that meets or exceeds current standards.

The N366-30M has 9/125 duplex (zipcord) fiber made from glass, instead of polymer. The sturdy LC and SC male connectors meet stringent insertion loss standards and feature beveled edges on their glass ends for easy insertion into a patch panel or switch. The FDDI- and OFNR-rated PVC jacket is yellow to easily identify it as a singlemode cable.

Features

Fast, Clear Data Transmission Through Your LAN

- Twice the bandwidth throughput of multimode cable
- Ideal for network equipment that requires singlemode fiber optic patch cables
- Attenuation loss meets or exceeds latest industry standards

Superior Construction for Error-Free Signal Transfer

- 9/125 duplex (zipcord) fiber made from glass
- Sturdy LC and SC male connectors meet stringent insertion loss standards
- Beveled edge on glass ends for easy plug insertion
- Yellow-colored for identification as singlemode

Specifications

Highlights

- Attenuation loss meets or exceeds latest industry standards
- 9/125 duplex (zipcord) fiber made from glass
- LC and SC male connectors meet insertion loss standards
- FDDI- and OFNR-rated PVC jacket
- Beveled edge on glass ends for easy plug insertion

System Requirements

- Fiber optic hardware or NIC card requiring singlemode duplex cable with LC/SC connectors

Package Includes

- N366-30M Duplex Singlemode 9/125 Fiber Patch Cable, 30 m

OVERVIEW

UPC Code

037332156976

Technology	Singlemode
Optical Mode	OS2
PHYSICAL	
Cable Jacket Color	Yellow
Connector Color	Blue; Blue; White
Cable Jacket Material	LSZH
Cable Jacket Rating	OFNR
Clad Diameter (microns)	125
Core Diameter (microns)	9
Number of Fibers	2
Cable Length (ft.)	98.4
Cable Length (m)	30.00
Cable Length (in.)	1181.1
Minimum Bend Radius	20 mm (Dynamic); 10 mm (Static)
Shipping Dimensions (hwd / in.)	10.50 x 12.00 x 0.50
Shipping Dimensions (hwd / cm)	26.67 x 30.48 x 1.27
Shipping Weight (lbs.)	0.54
Shipping Weight (kg)	0.24
Fiber Cable Length	30M (98.4 ft)
ENVIRONMENTAL	
Operating Temperature Range	-4° to 140°F (-20° to 60°C)
Storage Temperature Range	-4° to 140°F (-20° to 60°C)
Operating Humidity Range	5% to 85% RH, Non-Condensing
Storage Humidity Range	35% to 65% RH, Non-Condensing
COMMUNICATIONS	
Network Compatibility	1 Gbps (Gigabit); 10 Gbps; 25 Gbps; 40 Gbps; 100 Gbps; 400 Gbps
Attenuation @ 1310NM	0.36 dB/km
Attenuation @ 1550NM	0.22 dB/km
Insertion Loss	0.30 dB
CONNECTIONS	
Side A - Connector 1	LC DUPLEX (MALE)
Side B - Connector 1	SC DUPLEX (MALE)
Endface Polish	UPC

FEATURES & SPECIFICATIONS	
Push/Pull Tabs	No
Breakout	No
Trunk	No
STANDARDS & COMPLIANCE	
Product Compliance	RoHS; REACH
WARRANTY & SUPPORT	
Product Warranty Period (Worldwide)	Lifetime limited warranty