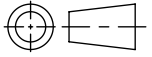
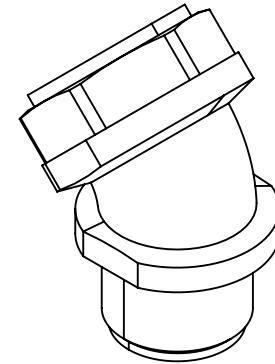
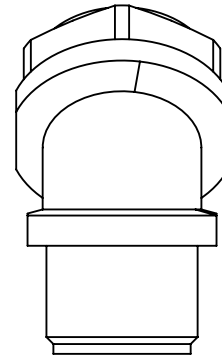
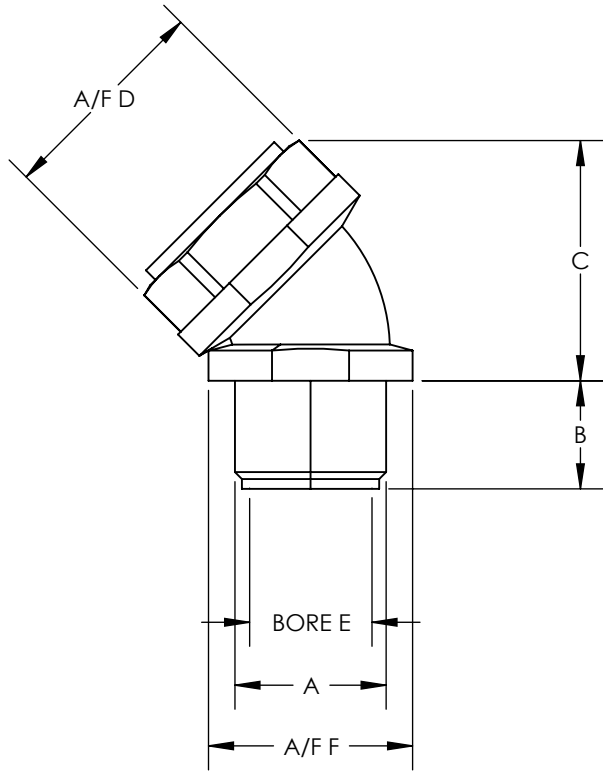


SW2014



Revision level			Revision Record	Changed	Date	Approved	Date
Drawing	State	Part					
00.0	Design Release		SEE ECN# 013639	GRW	12/1/2016	KAC	12/1/2016



- NOTES:
1. OPERATING TEMPERATURE
-58° F TO +275° F (-50° C TO +135° C)
 2. RoHS
 3. HF
 4. IP RATING IP68 + IP67 + IP68 + IP69
 5. FITS WITH UL360 SIZES
 6. FLAMMABILITY SELF-EXTINGUISHING
(EN 61386)
 7. UL LISTED TO UL514B
 8. PULL-OFF TENSILE STRENGTH 265 LBS
(120KG)

Conduit Size		HellermannTyton Part Number	Manufacturer Reference Number	Metric Thread	Dimension (mm)										
					A		B		C		D		E		F (A/F)
						in	mm	in	mm	in	mm	in	mm	in	mm
3/8	16.0	LTP16-M20-CUL45	LTP16-M20-CUL45	M20 X 1.5	0.51	13.0	1.25	31.8	1.02	26.0	0.42	10.7	0.94	24.0	
1/2	20.0	LTP20-M20-CUL45	LTP20-M20-CUL45	M20 X 1.5	0.51	13.0	1.44	36.5	1.14	29.0	0.57	14.5	0.94	24.0	
3/4	25.0	LTP25-M25-CUL45	LTP25-M25-CUL45	M25 X 1.5	0.55	14.0	1.93	49.0	1.38	35.0	0.71	18.0	1.18	30.0	
1	32.0	LTP32-M32-CUL45	LTP32-M32-CUL45	M32 X 1.5	0.59	15.0	2.43	61.6	1.65	42.0	0.97	24.6	1.42	36.0	
1-1/4	40.0	LTP40-M40-CUL45	LTP40-M40-CUL45	M40 X 1.5	0.71	18.0	2.71	68.9	2.24	57.0	1.29	32.7	1.85	47.0	
1-1/2	50.0	LTP50-M50-CUL45	LTP50-M50-CUL45	M50 X 1.5	0.71	18.0	2.97	75.4	2.45	62.0	1.48	37.7	2.40	61.0	
2	63.0	LTP63-M63-CUL45	LTP63-M63-CUL45	M63 X 1.5	0.79	20.0	3.58	91.0	2.99	76.0	1.93	49.0	2.64	67.0	

Material
NICKEL PLATED BRASS
& POLYAMIDE 6

Units: inches
Dimension without tolerances details to:
.xxxx = ±.0005
.xxx = ±.005
.xx = ±.01
.x = ±.03
None = ±.06
∠ = ±0.5°
Dimension Formatted in [mm]

The copyright of this drawing is reserved by HellermannTyton. It is issued on condition that it is not reproduced, copied, or disclosed to a third party, either wholly or in part, without the consent of HellermannTyton.

Drawn GRW 12/1/2016
Approved KAC 12/1/2016

HellermannTyton
North America
Email: corp@htamericas.com
Web: www.hellermann.tyton.com

Article/Type-No LTP-C45 SERIES
Title **HELAGUARD FIXED THREAD 45 DEGREE ELBOW COMPRESSION FITTING FOR LTP METALLIC CONDUIT WITH LIQUID-TIGHT COVER**
Drawing-No PRODUCTION : Phase
16-1969-001-CSU

Scale
Project Number PRP 16-1969
Format AH
Sheet 1/1