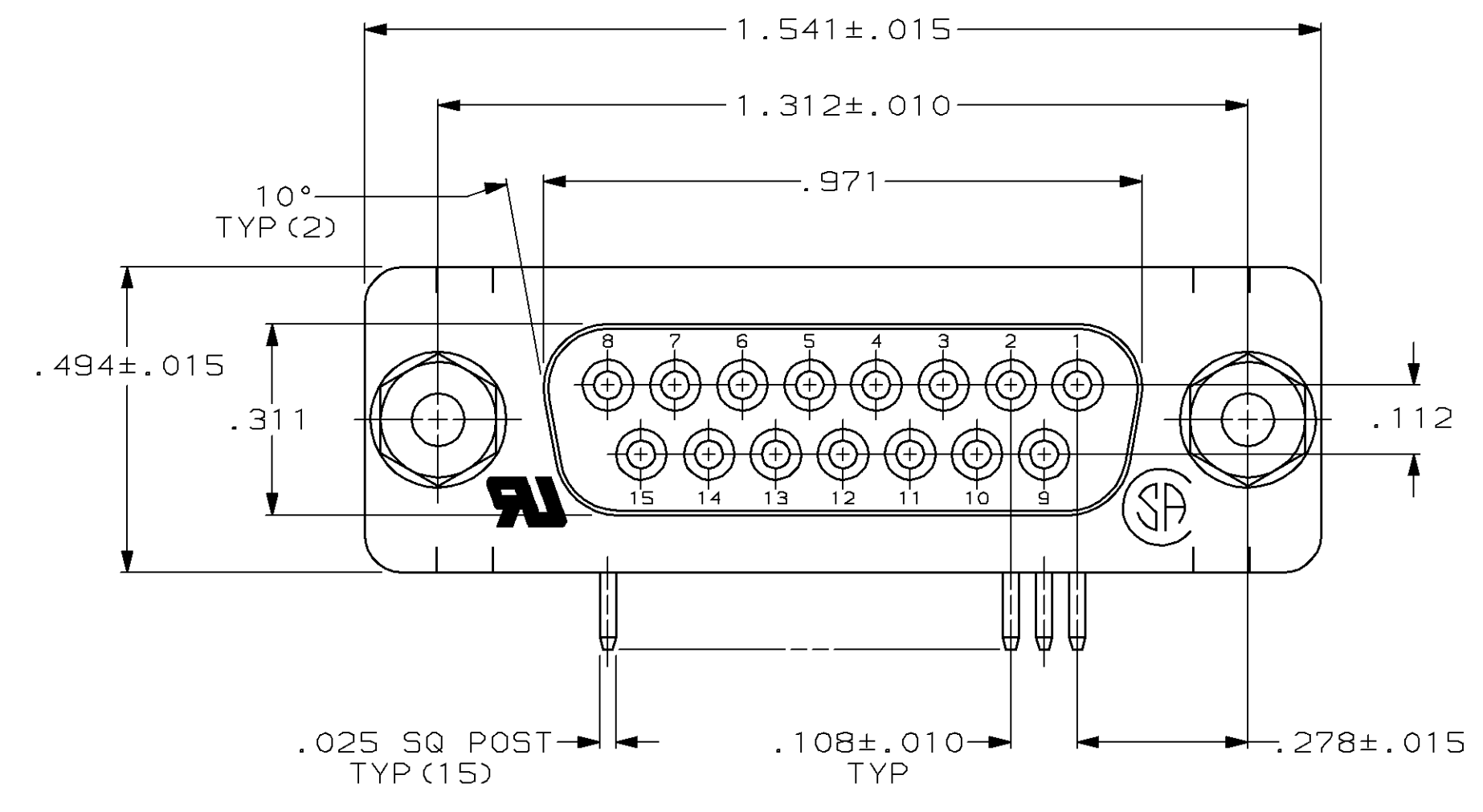
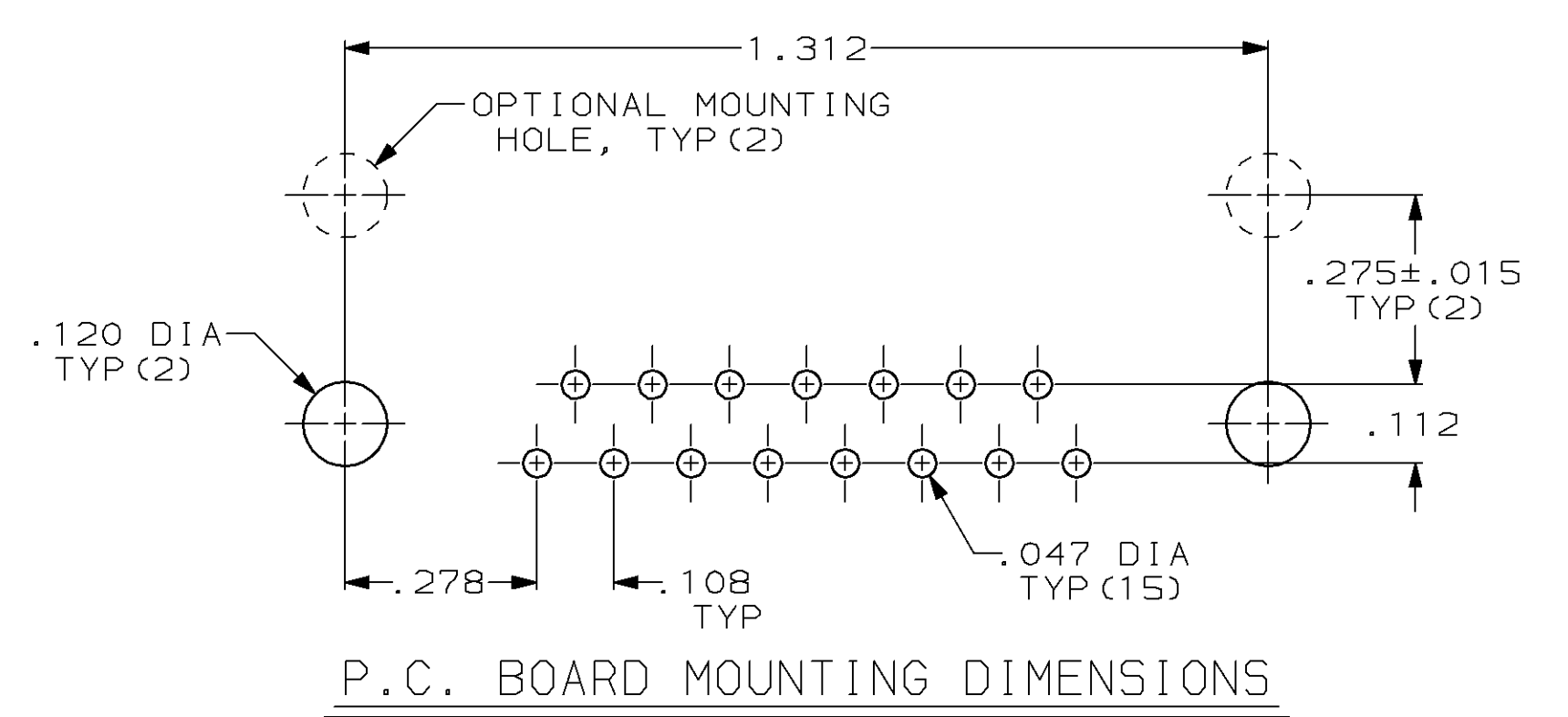
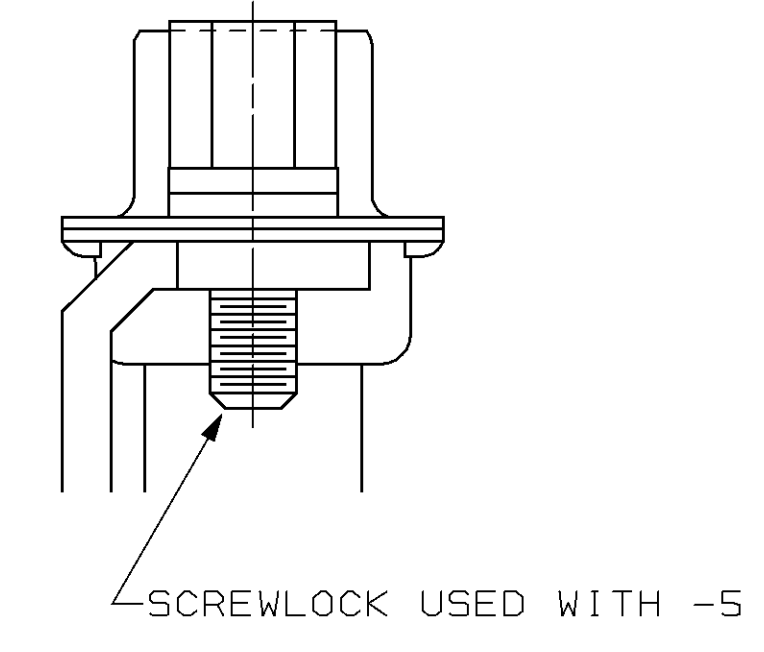
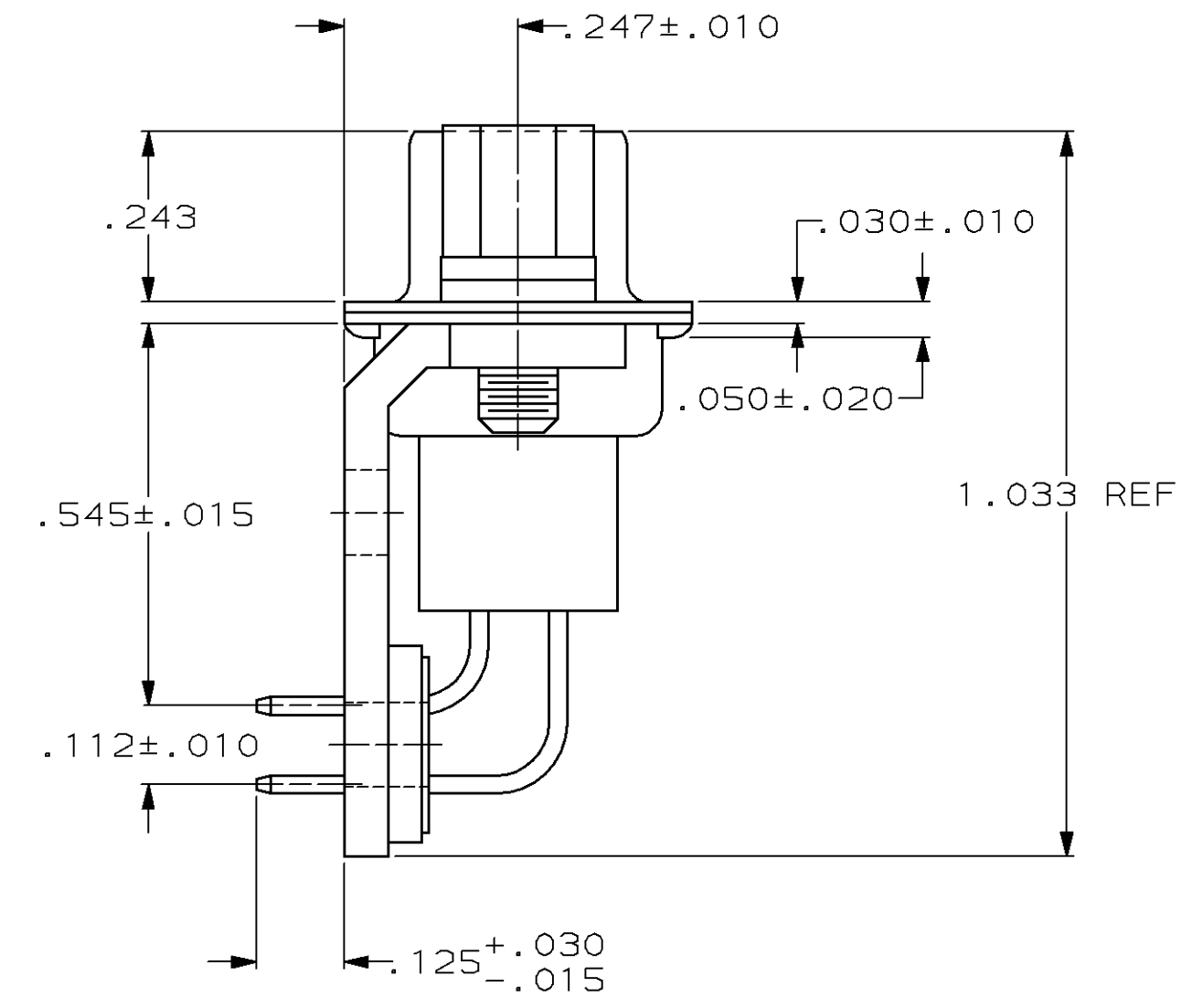
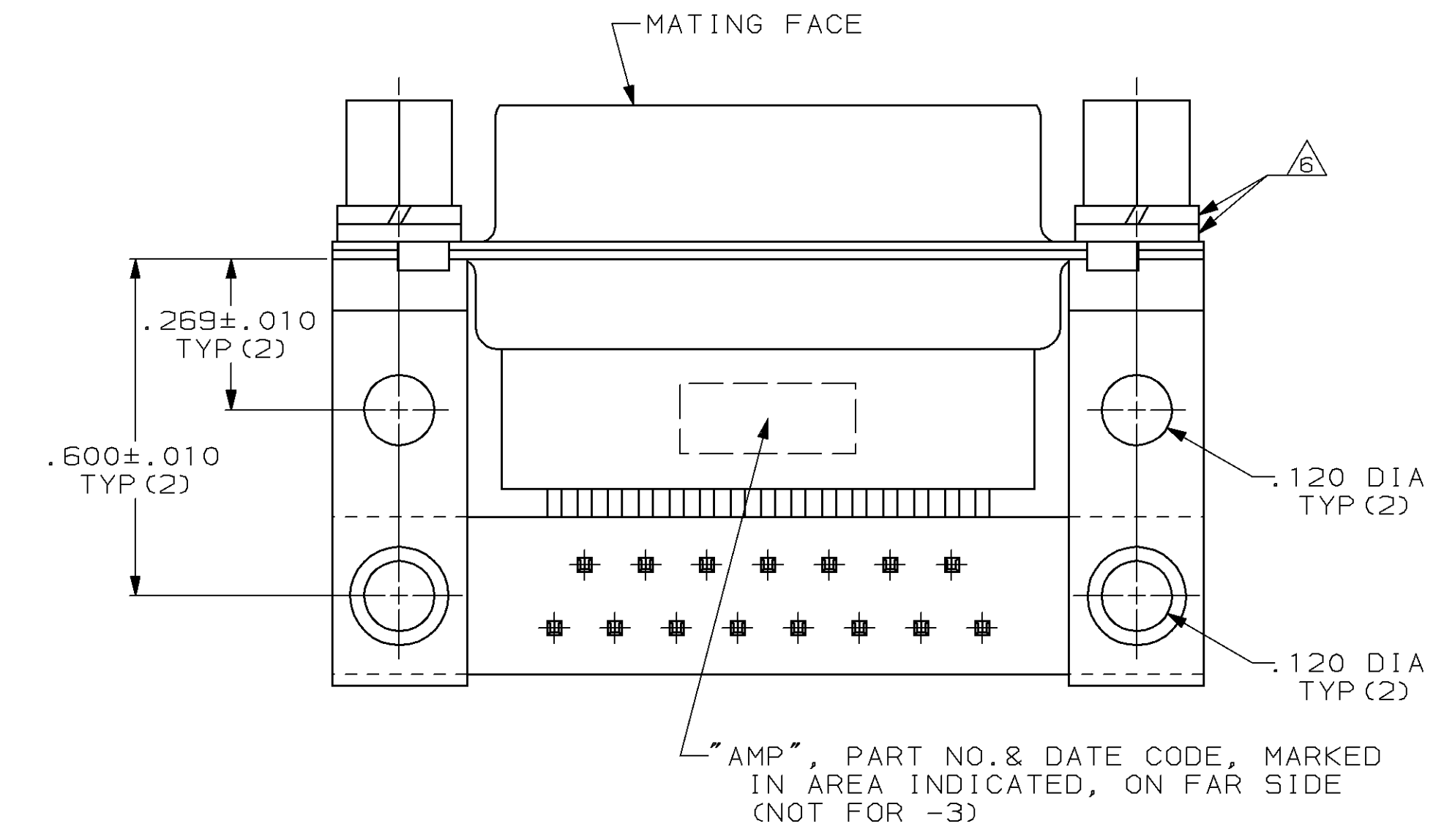


LOC		DIST		REVISIONS			
BD	77	P	LTR	DESCRIPTION	DATE	DWN	APVD
		C		REV PER ECN BD3132	9-11-89	-	-
		D		SUPSD -5 PER EC 0020-506-96	03 MAR 97	DH	RT
		E		SUPSD -1 PER EC 0020-570-96	03 MAR 97	DH	RT



- 1 MOLDED PARTS: THERMOPLASTIC, BLACK, 94V-0 RATED. SHELLS, BRACKETS & SCREWLOCKS: STEEL PER ASTM A109. CONTACTS: PHOSPHOR BRONZE PER QQ-B-750. WASHERS: STEEL PER ASTM A108.
- 2 SHELLS AND BRACKETS: TIN PLATED. SCREWLOCKS AND WASHERS: ZINC PLATED. CONTACTS: SEE TABLE.
- 3 GOLD FLASH FOR A LENGTH OF .100 MIN FROM MATING END, .000100 MIN TIN-LEAD ON OPPOSITE END, BOTH OVER .000050 MIN NICKEL.
- 4 .000030 MIN GOLD FOR A LENGTH OF .100 MIN FROM MATING END, .000100 MIN TIN-LEAD ON OPPOSITE END, BOTH OVER .000050 MIN NICKEL.
- 5 TIN PLATING PER MIL-T-10727; ZINC PLATING PER ASTM B633, TYPE III, CLASS SC1, CLEAR CHROMATE; GOLD PLATING PER MIL-G-45204; NICKEL PLATING PER QQ-N-290.
- 6 LOCKWASHERS ARE FOR -1, -2, -4 AND -5. PLAIN WASHERS ARE FOR -1, -2 AND -5.
- 7. CONNECTOR MATES WITH ANY 15 POSITION PLUG IN AMPLIMITE SERIES AND COMPLIES WITH AMP 108-40,005 WHERE APPLICABLE.



SUPSD BY 747021-2	4	747021-5
OBSOLETE	4	747021-4
OBSOLETE	4	747021-3
	4	747021-2
SUPSD BY 747021-2	3	747021-1
		CONTACT FINISH
		PART NUMBER

THIS DRAWING IS A CONTROLLED DOCUMENT.

DWN	J. GERACE	9-27-84	AMP Incorporated Harrisburg, PA 17105-3508
CHK	J. GERACE	9-27-84	
APVD	J. ASSINI	9-17-84	NAME RECEPTACLE ASSEMBLY, SIZE 2, 15 POSN, R/A, .545 SERIES, AMPLIMIT™ HDP
PRODUCT SPEC			
APPLICATION SPEC			SIZE A1
WEIGHT	-		CAGE CODE 00779
CUSTOMER DRAWING			DRAWING NO 747021
			SCALE 4:1
			SHEET 1 OF 1
			REV E