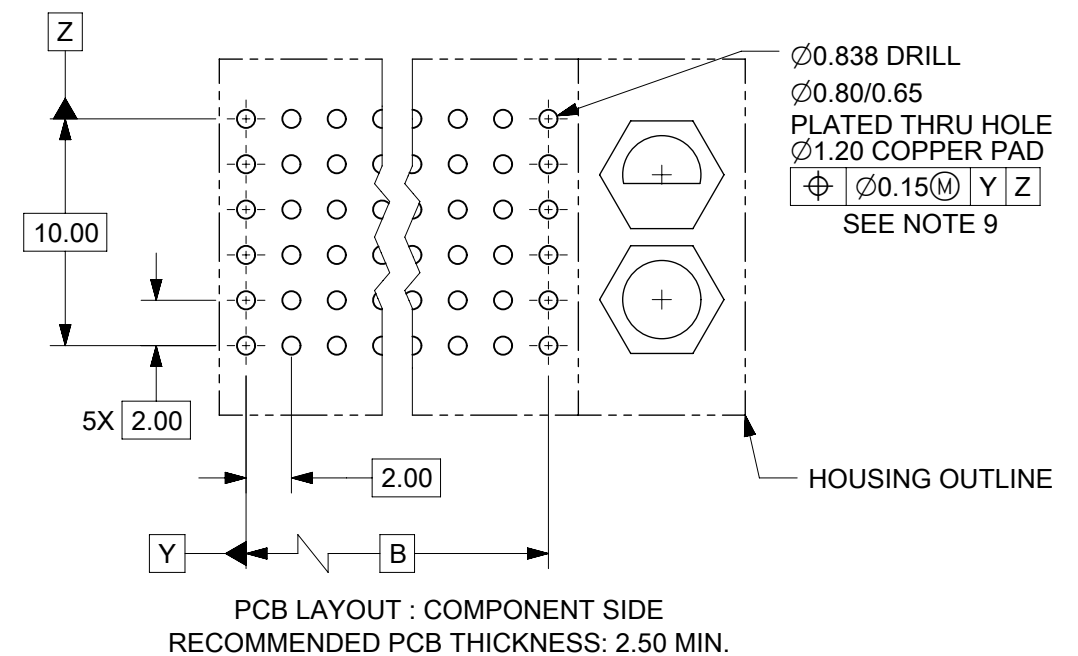
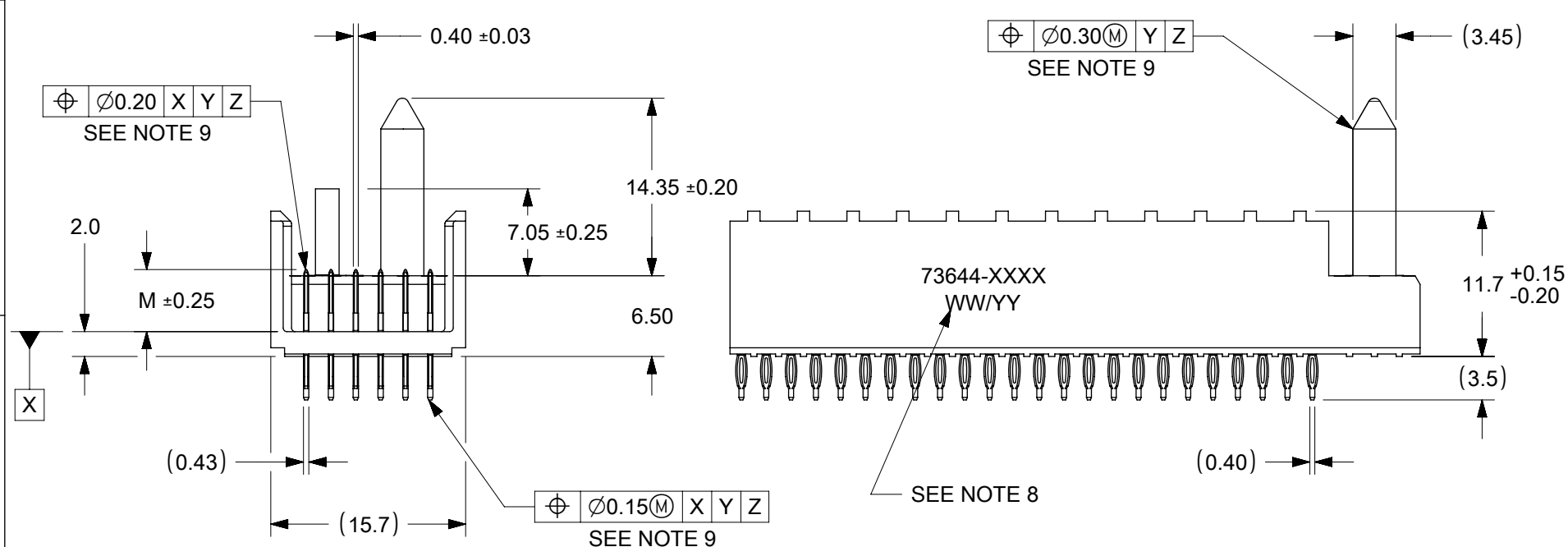


NOTES:

1. MATERIALS : HOUSING - LIQUID CRYSTAL POLYMER (LCP)
GLASS-FILLED, UL 94V-0, COLOR: BLACK
TERMINAL - PHOSPHOR BRONZE.
2. FINISH: SELECTIVE GOLD (Au) IN CONTACT AREA, 0.76 MICROMETERS MINIMUM THICKNESS, NICKEL (Ni) AND GOLD FLASH OVERALL.
SELECTIVE GOLD (Au) IN CONTACT AREA, 0.76 MICROMETERS MINIMUM THICKNESS, SELECTIVE MATTE TIN (Sn) ON IN TAIL AREA.
NICKEL (Ni) OVERALL.
3. THIS PART CONFORMS TO MOLEX PRODUCT SPECIFICATION PS-73670-9999.
4. FOR MIXED CONTACT MATING LENGTHS, CONSULT FACTORY FOR AVAILABILITY.
5. DIMENSIONS ARE IN MILLIMETERS.
6. FOR SPECIFIC MATERIAL NUMBERS, SEE SHEET 2.
7. PACKAGE PER PK-70873-0818.
8. PARTS MARKED WITH PART NUMBER AND DATE CODE ON EITHER SIDE, APPROXIMATELY WHERE SHOWN.
9. POSITION TOLERANCE ARE INSPECTED BY GAUGE 737270006 OR 737270011.



| | | | | | | |
|--|---|---------|-------------------|-----------------|----------------|--------------|
| FUNCTIONAL SYMBOLS | THIS DRAWING CONTAINS INFORMATION THAT IS PROPRIETARY TO MOLEX ELECTRONIC TECHNOLOGIES, LLC AND SHOULD NOT BE USED WITHOUT WRITTEN PERMISSION | | | | | |
| | DIMENSION UNITS | SCALE | | | | |
| | GENERAL TOLERANCES (UNLESS SPECIFIED) | | EC NO: 719835 | | 2022/05/16 | |
| | ANGULAR TOL ± 0.5° | | DRWN: KRISHH1 | | 2022/09/13 | |
| DIVISIONAL SYMBOLS | 4 PLACES ± | | CHKD: JKACHLIC | | 2022/09/13 | |
| | 3 PLACES ± | | APPR: JKACHLIC | | 2022/09/13 | |
| | 2 PLACES ± 0.05 | | INITIAL REVISION: | | | |
| | 1 PLACE ± 0.1 | | DRWN: RFC_PLMIMP | | 2018/11/28 | |
| | 0 PLACES ± | | APPR: SREED | | 2003/05/15 | |
| DRAFT WHERE APPLICABLE MUST REMAIN WITHIN DIMENSIONS | THIRD ANGLE PROJECTION | DRAWING | SERIES | MATERIAL NUMBER | CUSTOMER | SHEET NUMBER |
| | | B-SIZE | 73644 | SEE TABLE | GENERAL MARKET | 1 OF 3 |

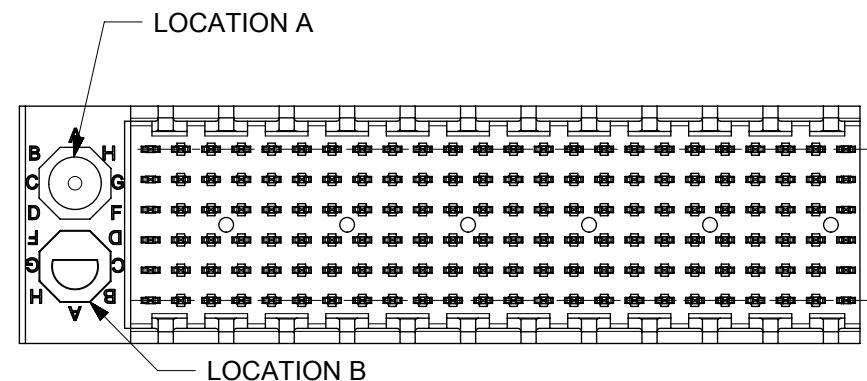
| MATERIAL NUMBER | NUMBER OF SIGNAL CONTACTS | PLATING | DIM "A" | DIM "B" | DIM "M" |
|-----------------|---------------------------|------------------------------------|---------|---------|---------|
| 73644-00** | 72 | SELECTIVE GOLD/GOLD FLASH | 31.60 | 22.00 | 5.00 |
| 73644-01** | 72 | SELECTIVE GOLD/GOLD FLASH | 31.60 | 22.00 | 5.50 |
| 73644-02** | 72 | SELECTIVE GOLD/GOLD FLASH | 31.60 | 22.00 | 6.00 |
| 73644-10** | 144 | SELECTIVE GOLD/GOLD FLASH | 55.60 | 46.00 | 5.00 |
| 73644-11** | 144 | SELECTIVE GOLD/GOLD FLASH | 55.60 | 46.00 | 5.50 |
| 73644-12** | 144 | SELECTIVE GOLD/GOLD FLASH | 55.60 | 46.00 | 6.00 |
| 73644-20** | 72 | SELECTIVE GOLD/SELECTIVE MATTE TIN | 31.60 | 22.00 | 5.00 |
| 73644-21** | 72 | SELECTIVE GOLD/SELECTIVE MATTE TIN | 31.60 | 22.00 | 5.50 |
| 73644-22** | 72 | SELECTIVE GOLD/SELECTIVE MATTE TIN | 31.60 | 22.00 | 6.00 |
| 73644-30** | 144 | SELECTIVE GOLD/SELECTIVE MATTE TIN | 55.60 | 46.00 | 5.00 |
| 73644-31** | 144 | SELECTIVE GOLD/SELECTIVE MATTE TIN | 55.60 | 46.00 | 5.50 |
| 73644-32** | 144 | SELECTIVE GOLD/SELECTIVE MATTE TIN | 55.60 | 46.00 | 6.00 |

MATERIAL NUMBER ASSIGNMENT

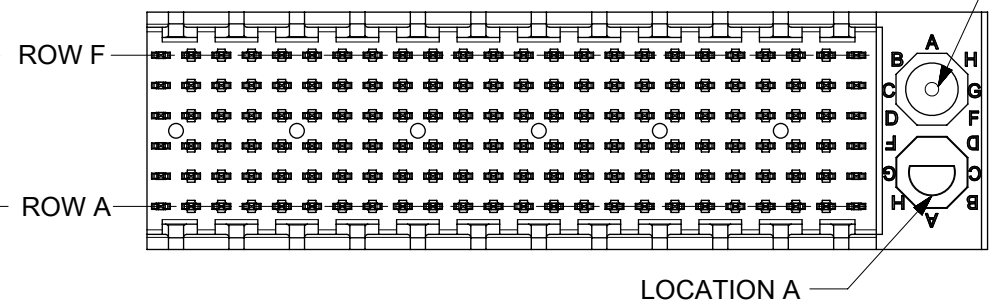
73644 - * * * *

- CIRCUIT SIZE**
- 0= 72 CIRCUIT, GOLD/GOLD FLASH
 - 1= 144 CIRCUIT, GOLD/GOLD FLASH
 - 2= 72 CIRCUIT, GOLD/MATTE TIN
 - 3= 144 CIRCUIT, GOLD/MATTE TIN
 - * FORMERLY TIN/ LEAD
- MATING LENGTH**
- 0= 5.00 MATING LENGTH
 - 1= 5.50 MATING LENGTH
 - 2= 6.00 MATING LENGTH

| NUMBER | GUIDE POST LOCATION | POLAR KEY POSITION |
|--------|---------------------|--------------------|
| 00 | B | A |
| 01 | A | A |
| 02 | B | B |
| 03 | A | B |
| 04 | B | C |
| 05 | A | C |
| 06 | B | D |
| 07 | A | D |
| 08 | B | E |
| 09 | A | E |
| 10 | B | F |
| 11 | A | F |
| 12 | B | G |
| 13 | A | G |
| 14 | B | H |
| 15 | A | H |
| 16 | B | N/A |
| 17 | A | N/A |
| 18 | N/A | N/A |



REF. MATERIAL NUMBER 73644-0009
GUIDE PIN IS IN LOCATION A
POLARIZING KEY IS IN LOCATION B, POSITION E



REF. MATERIAL NUMBER 73644-0008
GUIDE PIN IS IN LOCATION B
POLARIZING KEY IS IN LOCATION A, POSITION E

| | | | | | | | | | | | | | | | | | | | | | |
|--|--|------------------------|--|---|--|-----------|--|-----------------|--|---|--|----------|--|--|--|----------|--|--|--|--|--|
| FUNCTIONAL SYMBOLS | | | | | | | | | | THIS DRAWING CONTAINS INFORMATION THAT IS PROPRIETARY TO MOLEX ELECTRONIC TECHNOLOGIES, LLC AND SHOULD NOT BE USED WITHOUT WRITTEN PERMISSION | | | | | | | | | | | |
| DIMENSION UNITS | | SCALE | | CURRENT REV DESC: SEE REVISION TABLE ON SHEET 3 | | | | | | | | | | <p>SALES ASSEMBLY, HDM BACKPLANE MODULE POLAR/GUIDE OPTION</p> | | | | | | | |
| mm | | 2:1 | | GENERAL TOLERANCES (UNLESS SPECIFIED) | | | | | | | | | | | | | | | | | |
| ANGULAR TOL | | ± 0.5° | | EC NO: 719835 | | | | | | | | | | DOCUMENT NUMBER | | | | | | | |
| 4 PLACES | | ± | | DRWN: KRISHH1 | | | | | | | | | | 2022/05/16 | | | | | | | |
| 3 PLACES | | ± | | CHKD: JKACHLIC | | | | | | | | | | 2022/09/13 | | | | | | | |
| 2 PLACES | | ± 0.05 | | APPR: JKACHLIC | | | | | | | | | | 2022/09/13 | | | | | | | |
| 1 PLACE | | ± 0.1 | | INITIAL REVISION: | | | | | | | | | | PRODUCT CUSTOMER DRAWING | | | | | | | |
| 0 PLACES | | ± | | DRWN: RFC_PLMIMP | | | | | | | | | | 2018/11/28 | | | | | | | |
| DRAFT WHERE APPLICABLE MUST REMAIN WITHIN DIMENSIONS | | THIRD ANGLE PROJECTION | | DRAWING | | SERIES | | MATERIAL NUMBER | | CUSTOMER | | DOC TYPE | | DOC PART | | REVISION | | | | | |
| | | B-SIZE | | 73644 | | SEE TABLE | | GENERAL MARKET | | PSD | | 001 | | L | | 2 OF 3 | | | | | |

F

F

E

E

D

D

C

C

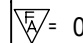

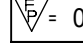

B

B

A

A

| DATE | REV | DESCRIPTION |
|------------|-----|--|
| 05/19/2022 | L | 1. DRAWING MIGRATION. 2. SHEET 1: E07: DIMENSION 0.92 REMOVED BECAUSE DIM 'A' AND DIM 'B' ARE WITH SAME CENTER LINE, SO DIM 0.92 IS NOT REQUIRED. 3. SHEET 1: C09: DIM 0.42 CHANGED TO 0.40±0.03MM, TO FOLLOW ACTUAL COMPONENT DIMENSION. 0.39 4. SHEET 1: D06: TOLERANCE OF DIM 'A' CHANGED TO ±0.15 FROM ±0.10, TO FOLLOW ACTUAL COMPONENT DIMENSION. 5. SHEET 1: C10: DIM 2.00 CHANGED TO DIM 2.0 TO INCREASE THE TOLERANCE TO FOLLOW ACTUAL COMPONENT DIMENSION. 6. SHEET 1: E04: ADDED NOTE 9 FOR POSITION TOLERANCE MEASUREMENT. 7. SHEET 1: E08, E07, C04, B03 : REMOVED BRACKET FROM THE BASIC DIMENSION 10.00 , B , 10.00 , B RESPECTIVELY FOR TP CONTROL 8. SHEET 1: B08, C10, C06, C01 : ADDED "SEE NOTE 8" FOR TP CONTROL 9. SHEET 1: C08: DIM 7.05±0.20 AND 14.35±0.15 CHANGED TO 7.05±0.25 AND 14.35±0.15 RESPECTIVELY. |
| | | |

| | | | | | | | | | |
|---|--|---------------------|---|-----------------|--------------------------|------------------------|------------------------------|----------------------------|------------------------|
| THIS DRAWING CONTAINS INFORMATION THAT IS PROPRIETARY TO MOLEX ELECTRONIC TECHNOLOGIES, LLC AND SHOULD NOT BE USED WITHOUT WRITTEN PERMISSION | | | | | | | | | |
| FUNCTIONAL SYMBOLS  = 0  = 0  = 0 | DIMENSION UNITS mm | SCALE 1:1 | CURRENT REV DESC: SEE REVISION TABLE ON SHEET 3 | | | | | | |
| | GENERAL TOLERANCES (UNLESS SPECIFIED) | | EC NO: 719835 DRWN: KRISHH1 CHKD: JKACHLIC APPR: JKACHLIC | | | | | | |
| | ANGULAR TOL ± 0.5° | | 2022/05/16 2022/09/13 2022/09/13 | | | | | | |
| | 4 PLACES ± | | INITIAL REVISION: DRWN: RFC_PLMIMP APPR: SREED | | | | | | |
| DIVISIONAL SYMBOLS 3 PLACES ± 2 PLACES ± 0.05 1 PLACE ± 0.1 0 PLACES ± | DRAFT WHERE APPLICABLE MUST REMAIN WITHIN DIMENSIONS | | THIRD ANGLE PROJECTION  | | DRAWING B-SIZE | SERIES 73644 | MATERIAL NUMBER SEE TABLE | CUSTOMER GENERAL MARKET | SHEET NUMBER 3 OF 3 |
| | DOCUMENT NUMBER SDA-73644-XXXX | | DOC TYPE PSD | DOC PART 001 | REVISION L | | | | |
| | SALES ASSEMBLY, HDM BACKPLANE MODULE POLAR/GUIDE OPTION | | PRODUCT CUSTOMER DRAWING | | | | | | |
| | molex | | | | | | | | |

| MATERIAL NUMBER | NUMBER OF SIGNAL CONTACTS | PLATING | DIM "A" | DIM "B" | DIM "M" |
|-----------------|---------------------------|-----------------------------------|---------|---------|---------|
| 73644-00** | 72 | SELECTIVE GOLD/GOLD FLASH | 31.60 | 22.00 | 5.00 |
| 73644-01** | 72 | SELECTIVE GOLD/GOLD FLASH | 31.60 | 22.00 | 5.50 |
| 73644-02** | 72 | SELECTIVE GOLD/GOLD FLASH | 31.60 | 22.00 | 6.00 |
| 73644-10** | 144 | SELECTIVE GOLD/GOLD FLASH | 55.60 | 46.00 | 5.00 |
| 73644-11** | 144 | SELECTIVE GOLD/GOLD FLASH | 55.60 | 46.00 | 5.50 |
| 73644-12** | 144 | SELECTIVE GOLD/GOLD FLASH | 55.60 | 46.00 | 6.00 |
| 73644-20** | 72 | SELECTIVE GOLD/SELECTIVE TIN-LEAD | 31.60 | 22.00 | 5.00 |
| 73644-21** | 72 | SELECTIVE GOLD/SELECTIVE TIN-LEAD | 31.60 | 22.00 | 5.50 |
| 73644-22** | 72 | SELECTIVE GOLD/SELECTIVE TIN-LEAD | 31.60 | 22.00 | 6.00 |
| 73644-30** | 144 | SELECTIVE GOLD/SELECTIVE TIN-LEAD | 55.60 | 46.00 | 5.00 |
| 73644-31** | 144 | SELECTIVE GOLD/SELECTIVE TIN-LEAD | 55.60 | 46.00 | 5.50 |
| 73644-32** | 144 | SELECTIVE GOLD/SELECTIVE TIN-LEAD | 55.60 | 46.00 | 6.00 |

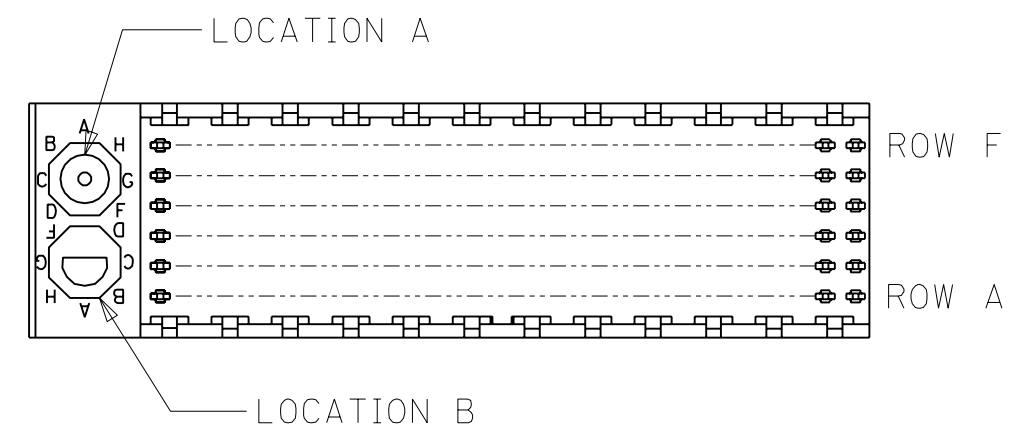
MATERIAL NUMBER ASSIGNMENT

73644- * * * *

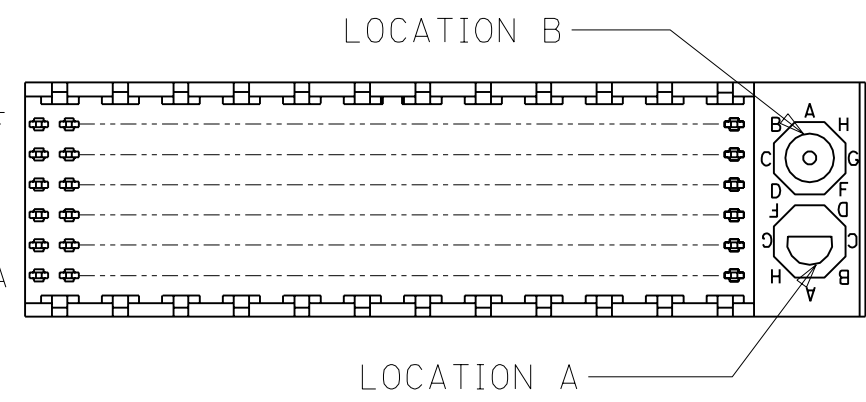
0 = 72-CIRCUIT, GOLD/GOLD FLASH
 1 = 144-CIRCUIT, GOLD/GOLD FLASH
 2 = 72-CIRCUIT, GOLD/TIN-LEAD
 3 = 144-CIRCUIT, GOLD/TIN-LEAD

0 = 5.00 MATING LENGTH
 1 = 5.50 MATING LENGTH
 2 = 6.00 MATING LENGTH

| NUMBER | GUIDE POST LOCATION | POLAR KEY POSITION |
|--------|---------------------|--------------------|
| 00 | B | A |
| 01 | A | |
| 02 | B | B |
| 03 | A | |
| 04 | B | C |
| 05 | A | |
| 06 | B | D |
| 07 | A | |
| 08 | B | E |
| 09 | A | |
| 10 | B | F |
| 11 | A | |
| 12 | B | G |
| 13 | A | |
| 14 | B | H |
| 15 | A | |
| 16 | B | |
| 17 | A | |
| 18 | N/A | N/A |



REF. MATERIAL NUMBER 73644-0009
 GUIDE PIN IS IN LOCATION A
 POLARIZING KEY IS IN LOCATION B, POSITION E



REF. MATERIAL NUMBER 73644-0008
 GUIDE PIN IS IN LOCATION B
 POLARIZING KEY IS IN LOCATION A, POSITION E

| DIMENSIONS SHOWN (METRIC) INCH | | | | ∇ = 0 \blacktriangledown = 0 REVISE ONLY ON CAD SYSTEM | | | | | | | | | | | | | |
|--|-----------|-----------|--|--|------|--------|---------|-----------|-----|---------|-----------|-----------|---------|-----|-----------|---|--|
| UNLESS OTHERWISE SPECIFIED TOLERANCES: ANGULAR \pm 1/2° | | | | TITLE | | | | | | | | | | | | | |
| <table border="1" style="margin: auto;"> <thead> <tr> <th></th> <th>INCH</th> <th>METRIC</th> </tr> </thead> <tbody> <tr> <td>3 PLACE</td> <td>\pm N/A</td> <td>---</td> </tr> <tr> <td>2 PLACE</td> <td>\pm N/A</td> <td>\pm N/A</td> </tr> <tr> <td>1 PLACE</td> <td>---</td> <td>\pm N/A</td> </tr> </tbody> </table> | | | | | INCH | METRIC | 3 PLACE | \pm N/A | --- | 2 PLACE | \pm N/A | \pm N/A | 1 PLACE | --- | \pm N/A | SALES ASSY, HDM BACKPLANE MODULE, POLAR/GUIDE OPTION | |
| | INCH | METRIC | | | | | | | | | | | | | | | |
| 3 PLACE | \pm N/A | --- | | | | | | | | | | | | | | | |
| 2 PLACE | \pm N/A | \pm N/A | | | | | | | | | | | | | | | |
| 1 PLACE | --- | \pm N/A | | | | | | | | | | | | | | | |
| DRAFT WHERE APPLICABLE MUST REMAIN WITHIN DIMENSIONS | | | | MOLEX INCORPORATED SHEET NO. DATE LISLE, ILL. 60532 U.S.A. 2 96/12/18 | | | | | | | | | | | | | |
| DRWG. BY: JRR CHK'D. BY: SMR | | | | PART NO. DRWG. NO. | | | | | | | | | | | | | |
| APP'D. BY: CAB SCALE: -- : -- | | | | SEE CHART SDA-73644-**** | | | | | | | | | | | | | |
| LTR. REVISIONS LTR. REVISIONS | | | | FILE NAME: S73644X2 DGN THIS DRAWING CONTAINS INFORMATION THAT IS PROPRIETARY TO MOLEX INC. AND SHOULD NOT BE USED WITHOUT WRITTEN PERMISSION. DIV. SIZE DA B | | | | | | | | | | | | | |