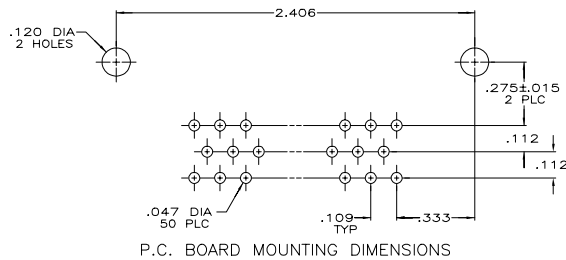
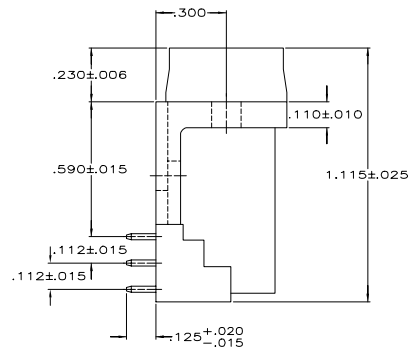
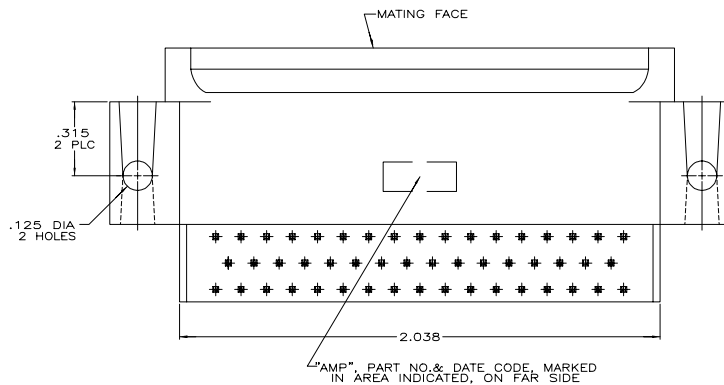
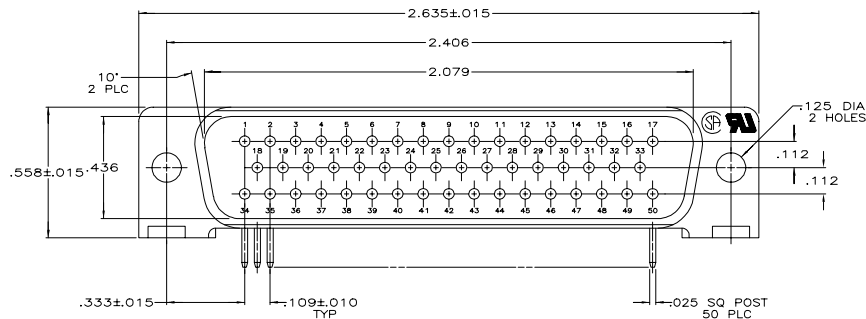


REVISIONS					
P	LTR	DESCRIPTION	DATE	DWN	APVD
D1		ECO-20-005923	23APR2020	RR	SH



- 1. CONNECTOR MATES WITH ANY 50 POS. RECEPTACLE IN AMPLIMITE SERIES & COMPLIES WITH AMP SPEC. 108-40,005 WHERE APPLICABLE.
- △ MOLDED PARTS: FLAME RETARDANT 94V-0 RATED THERMOPLASTIC, BLACK; CONTACT: BRASS;
- △ GOLD PLATED FOR LENGTH OF .150 MIN FROM MATING END, .000030 MIN GOLD IN MATED AREA, GOLD FLASH ON REMAINDER, ALL OVER .000050 NICKEL ON ENTIRE CONTACT.
- △ GOLD PLATED FOR A LENGTH OF .150 FROM MATING END, .000030 MIN GOLD IN MATED AREA, .000100-.000200 BRIGHT TIN OR BRIGHT TIN-LEAD ON SOLDER END, ALL OVER .000050 MIN NICKEL ON ENTIRE CONTACT.
- OR- GOLD FLASH OVER PALLADIUM NICKEL PLATED FOR LENGTH OF .150 FROM MATING END, .000030 MIN PALLADIUM NICKEL IN MATED AREA, .000100-.000200 BRIGHT TIN OR BRIGHT TIN-LEAD ON SOLDER END, ALL OVER .000050 MIN NICKEL ON ENTIRE CONTACT.
- △ NO CONTACT LOADED IN POSITIONS 6, 9, 22, 25, 39 & 42.

OBSOLETE	5	4	748301-2
	5	3	748301-1
	REMARKS	CONTACT FINISH	PART NO.

THIS DRAWING IS A CONTROLLED DOCUMENT.		DWN C. RICHARD 5-15-86	TE Connectivity	
DIMENSIONS: INCHES		CHK J. DIEHL 5-16-86	PLUG ASSEMBLY, SIZE 5, 50 POS. RIGHT ANGLE, .590 SERIES, .025 SQ. POSTS, HD-20	
TOLERANCES UNLESS OTHERWISE SPECIFIED:		APVD C. MACKRIDGES 5-16-86	NAME	
0 PLC ± -		PRODUCT SPEC		
1 PLC ± -		APPLICATION SPEC		
2 PLC ± .005		SIZE CAGE CODE DRAWING NO RESTRICTED TO		
3 PLC ± -		A2 00779 C=748301		
4 PLC ± -		WEIGHT		
ANGLES ± 2 DEG		CUSTOMER DRAWING		
MATERIAL		SCALE 1:1 SHEET 1 of 1 REV D1		
FINISH		CONTACTS-SEE TABLE		