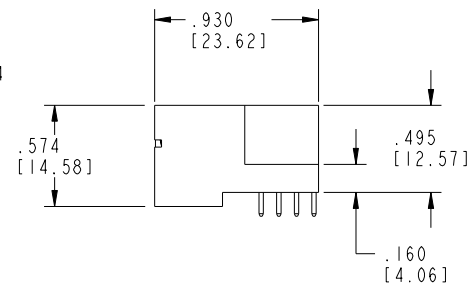
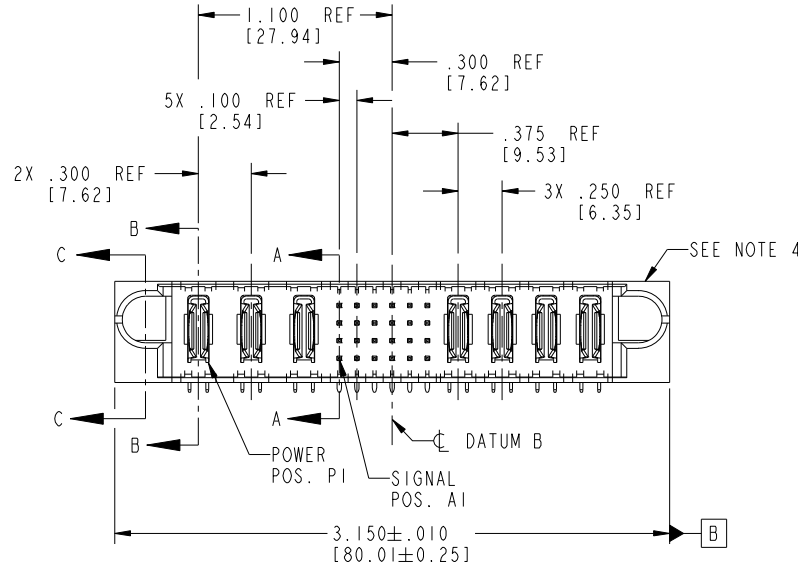


Tous droits strictement réservés. Reproduction ou communication à des tiers interdite sous quelque forme que ce soit sans autorisation écrite du propriétaire. Propriété de c.FCI. Droits de reproduction FCI.



All rights strictly reserved. Reproduction or issue to third parties in any form whatever is not permitted without written authority from the proprietor. Property of FCI. Copyright FCI.

PRODUCT NO.	ROWS	POWER			SIGNAL				POWER				E2	
		E1	P1	P2	P3	1	2	3	4	5	6	P4		P5
51939-180 NOTE ③	D C B A													



CODE	DIM "M" MATING LENGTH	CONTACT TYPE
R	.270 [6.86]	SIGNAL
S	.270 [6.86]	SIGNAL
T	.270 [6.86]	SIGNAL
U	.270 [6.86]	SIGNAL
E	.220 [5.59]	SIGNAL
PA	N/A [N/A]	POWER

mat'l code				SEE NOTE 2		tolerances unless otherwise specified		CUSTOMER	
ltr	ecn no.	dr	date	linear	.XX±.01/0.X±0.3	projection	www.fciconnect.com		
A	DG05-0098	JM	05/05/05		.XXX±.005/0.XX±0.13		title 3ACP + 24S + 4P		
B	DG06-0001	RYAN	01/04/06	angles	.XXX±.0020/0.XXX±0.051		RIGHT ANGLE SOLDER HEADER		
C	DG09-0003	WD	03/18/09		0°±2°		product family PwrBlade code 213		
				dr	JM Guo 05/05/05	INCH/MM	size dwg no		sheet
				enr	SLUO 05/05/05	scale	A 51939-180		1 of 4
				chr	VICTOR LIN 05/05/05	1:1			
				appd	JOSEPH HSIA 05/05/05				
sheet index	revision sheet	C	C	C	C				
		1	2	3	4				

CUSTOMER		COPY		product family		code	
3		A		PwrBlade		213	
cage code		22526		size		sheet	
4		A		51939-180		1 of 4	

Pro/E

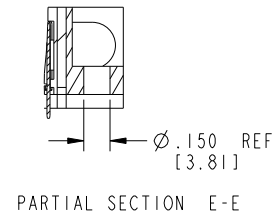
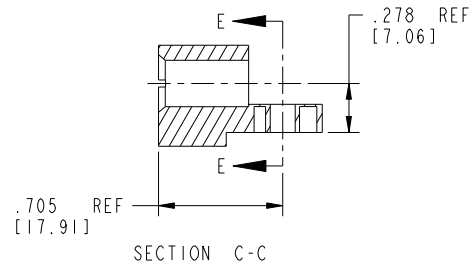
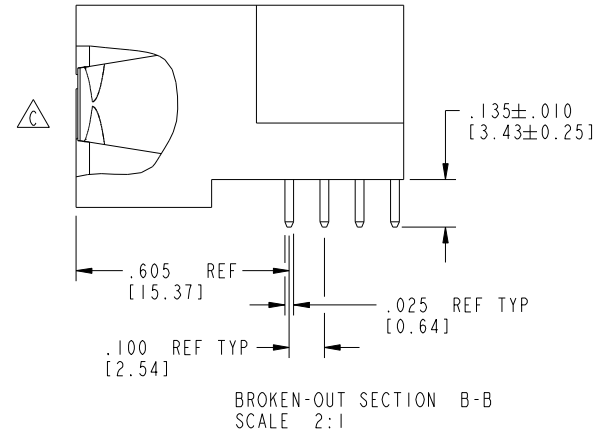
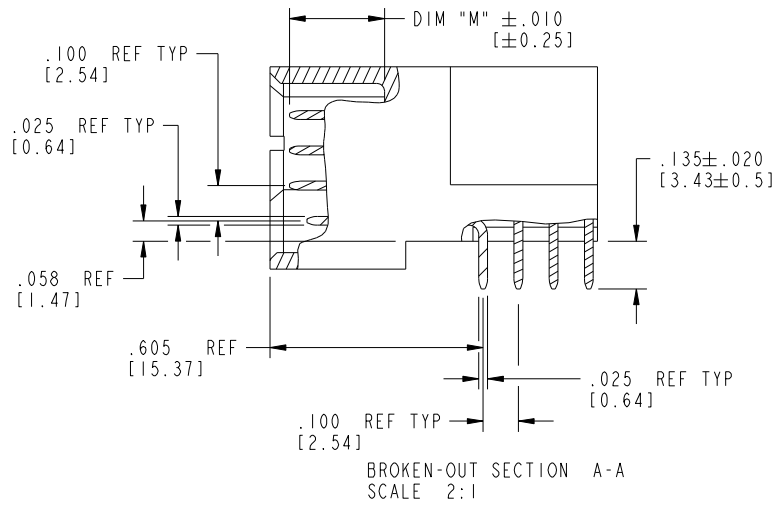
cage code 22526

Tous droits strictement réservés. Reproduction ou communication à des tiers interdite sous quelque forme que ce soit sans autorisation écrite du propriétaire. Propriété de c FCI. Droits de reproduction FCI.



All rights strictly reserved. Reproduction or issue to third parties in any form whatsoever is not permitted without written authority from the proprietor. Property of FCI. Copyright FCI.

PRODUCT NUMBER  
51939-180--  
NOTE ③



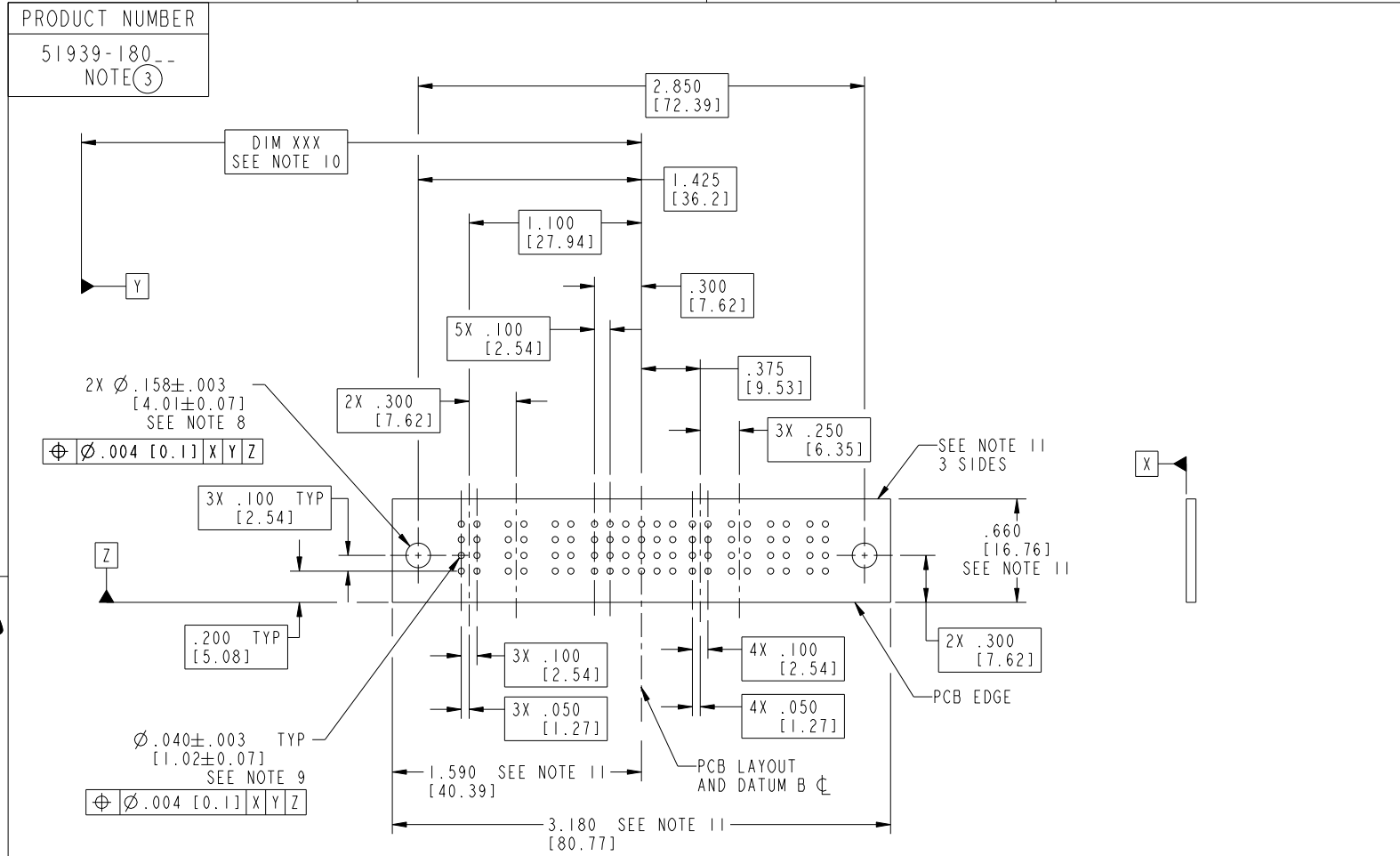
mat'l code		SEE NOTE 2		tolerances unless otherwise specified		CUSTOMER		 www.fciconnect.com	
ltr	ecn no.	dr	date	linear	.XX±.01/0.X±0.3	COPY		title	
C					.XXX±.005/0.XX±0.13	projection		3ACP + 24S + 4P	
				angles	.XXX±.0020/0.XXX±0.051	 INCH/MM		RIGHT ANGLE SOLDER HEADER	
				dr	JM Guo 05/05/05	scale		product family	
				enr	SLUO 05/05/05	1:1		PwrBlade	
				chr	VICTOR LIN 05/05/05	A		code	
				appd	JOSEPH HSIA 05/05/05			213	
sheet index		revision sheet						size	
								dwg no	
								51939-180	
								sheet	
								2 of 4	

cage code 22526

Tous droits strictement réservés. Reproduction ou communication à des tiers interdite sous quelque forme que ce soit sans autorisation écrite du propriétaire. Propriété de c FCI. Droits de reproduction FCI.



All rights strictly reserved. Reproduction or issue to third parties in any form whatever is not permitted without written authority from the proprietor. Property of FCI. Copyright FCI.



RECOMMENDED PCB LAYOUT

mat'l code		SEE NOTE 2		tolerances unless otherwise specified		CUSTOMER		 www.fciconnect.com	
ltr	ecn no.	dr	date	linear	.XX±.01/0.X±0.3	COPY		title	
C					.XXX±.005/0.XX±0.13	projection		3ACP + 24S + 4P	
				angles	.XXX±.0020/0.XXX±0.051			RIGHT ANGLE SOLDER HEADER	
				dr	0°±2°	INCH/MM		product family	
				enr	JM Guo 05/05/05	scale		PwrBlade	
				chr	SLUO 05/05/05	1:1		code	
				appd	VICTOR LIN 05/05/05	size		213	
					JOSEPH HSIA 05/05/05	dwg no		sheet	
sheet index	revision sheet					A		3 of 4	
						51939-180			

cage code 22526

Tous droits strictement reserves. Reproduction ou communication a des tiers interdite sous quelque forme que ce soit sans autorisation écrite du propriétaire. Propriete de c FCI. Droits de reproduction FCI.



All rights strictly reserved. Reproduction or issue to third parties in any form whatsoever is not permitted without written authority from the proprietor. Property of FCI. Copyright FCI.

PRODUCT NUMBER  
51939-180--  
NOTE (3)

NOTES:

1. DIMENSIONS AND TOLERANCES ARE IN ACCORDANCE WITH ASME Y14.5M, 1994 UNLESS OTHERWISE SPECIFIED.

CONNECTOR NOTES:

- 2. HOUSING MATERIAL: UL 94 V-0 GLASS FILLED HIGH-TEMP THERMOPLASTIC  
POWER CONTACT MATERIAL: COPPER ALLOY  
SIGNAL PIN MATERIAL: COPPER ALLOY

3. SEE ITEM 1 & 2 IN PRINT 10064183 FOR PLATING SPEC OF 51939-180 AND 51939-180LF RESPECTIVELY.

- 4. MANUFACTURER'S NAME, P/N, AND DATE CODE TO APPEAR ON THIS SURFACE.

5. PRODUCT SPECIFICATION GS-12-149.  
APPLICATION SPECIFICATION BUS-20-067.

6. PACKAGED IN TRAYS.

PCB NOTES:

7. ALL HOLE DIAMETERS ARE FINISHED HOLE SIZE.

- 8. MOUNTING HOLES, WHERE APPLICABLE, ARE UNPLATED.

- 9.  $\varnothing .0453 \pm .0010$  [1.151  $\pm$  0.025] DRILLED HOLES PLATED WITH  
.0003 [0.008] MIN SnPb OVER .001 [0.03]  
TO .003 [0.08] Cu PLATING TO ACHIEVE  
 $\varnothing .040 \pm .003$  [1.02  $\pm$  .07] HOLE.

- 10. "DIM XXX" TO BE DETERMINED BY THE CUSTOMER.

- 11. CONNECTOR KEEP-OUT ZONE.

12. A/C SYMBOL WILL BE NEXT TO ANY DIMENSION, VIEW, OR NOTE WHICH HAS BEEN MODIFIED WITH THE CURRENT DRAWING REVISION.

mat'l code		SEE NOTE 2		tolerances unless otherwise specified		CUSTOMER		FCI		www.fciconnect.com	
ltr	ecn no.	dr	date	linear	.XX±.01/0.X±0.3	COPY		projection		title	
C					.XXX±.005/0.XX±0.13					3ACP + 24S + 4P RIGHT ANGLE SOLDER HEADER	
				angles	.XXX±.002/0.XXX±0.051					product family	
				dr	0°±2°	INCH/MM		PwrBlade		code	
				enr	JM Guo 05/05/05	scale		size		213	
				chr	SLUO 05/05/05	1:1		dwg no		sheet	
				appd	VICTOR LIN 05/05/05			A		4 of 4	
					JOSEPH HSIA 05/05/05			51939-180			
sheet index	revision sheet										

cage code 22526

1 | 2 | 3 | 4

1 | 2 | Pro/E | 3 | cage code 22526 | 4