

MATERIALS AND FINISHES

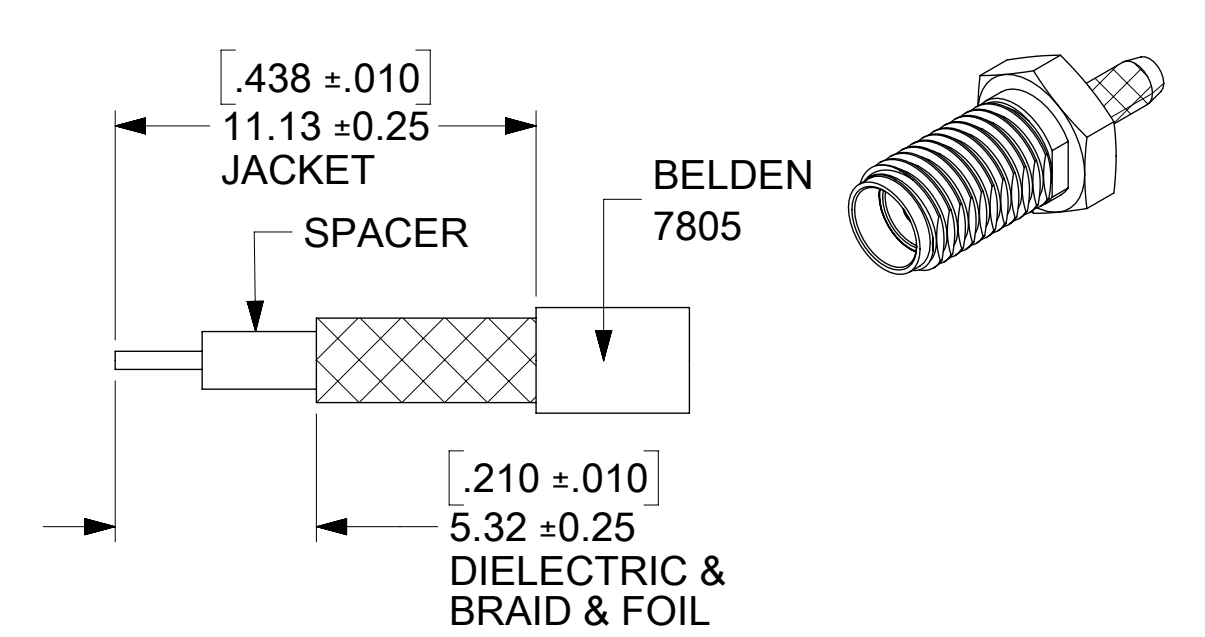
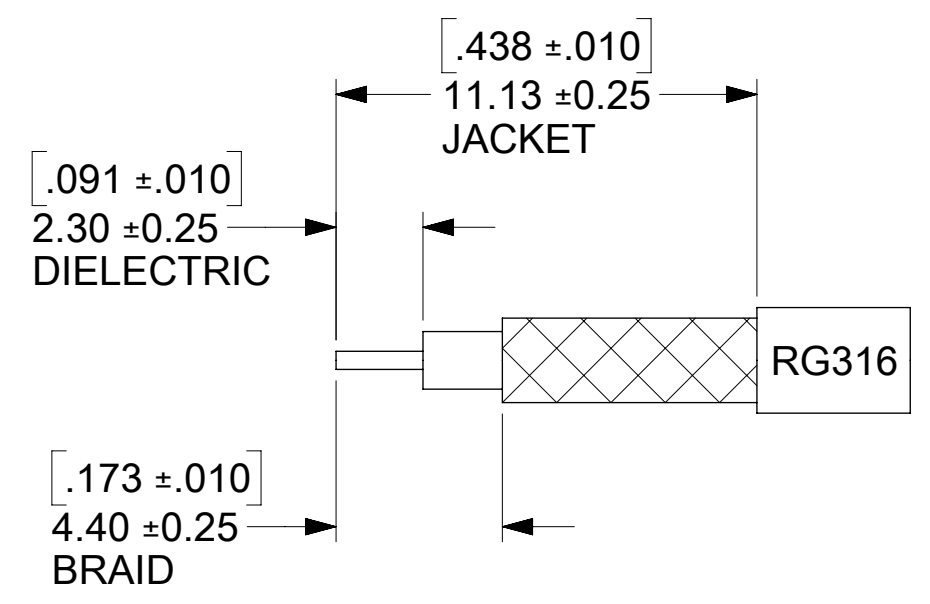
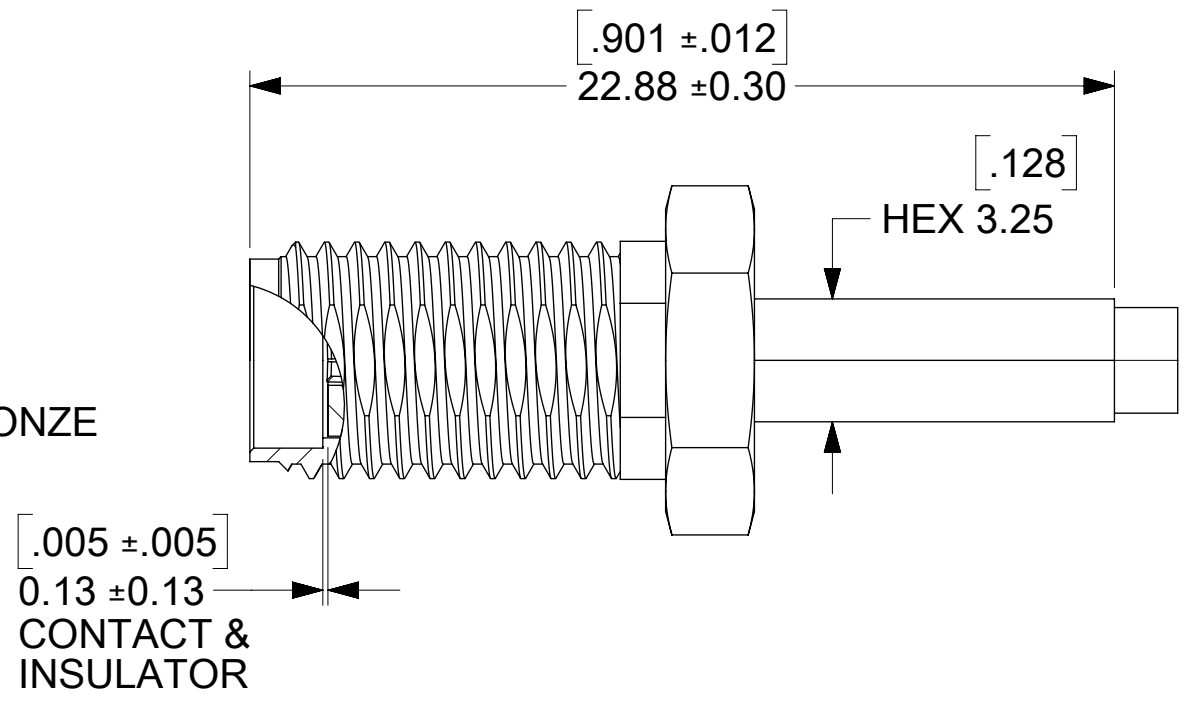
BODY, CRIMP TUBE: BRASS
PLATED SEE TABLE

CONTACT: BERYLLIUM COPPER
PLATED SEE TABLE

LOCK WASHER: PHOSPHOR BRONZE
PLATED SEE TABLE

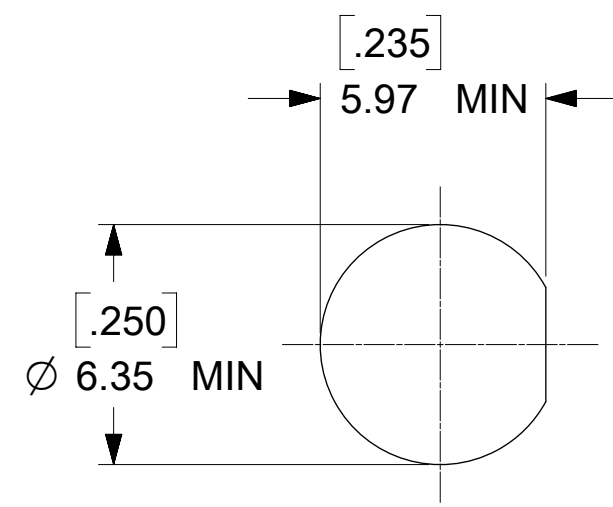
JAM NUT: BRASS
PLATED SEE TABLE

INSULATOR, SPACER: TEFLON

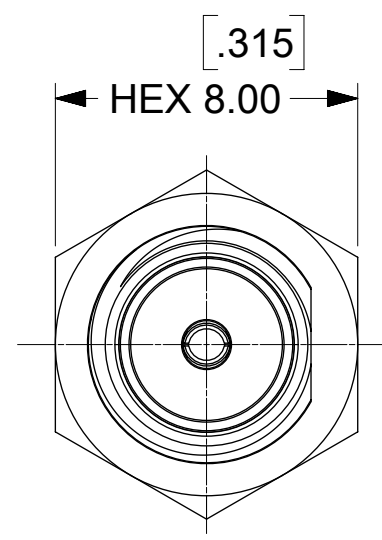


CABLE STRIPPING DIMENSIONS FOR -0260 THRU -0262 & -0264 & -0266

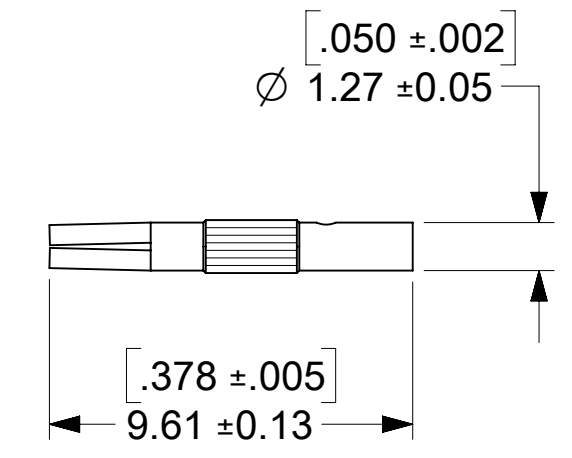
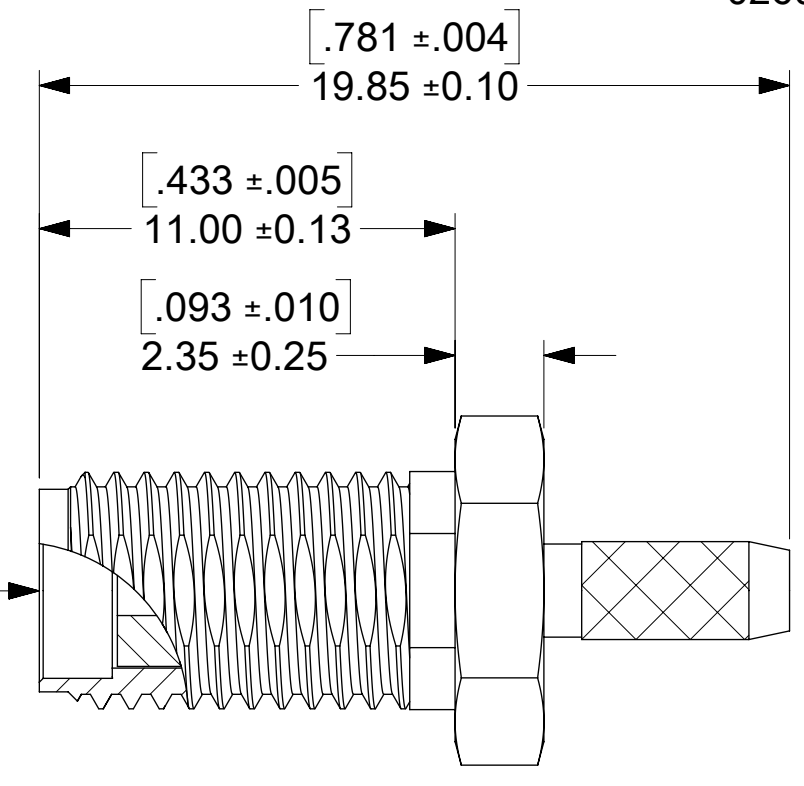
CABLE STRIPPING DIMENSIONS FOR -0263 ONLY



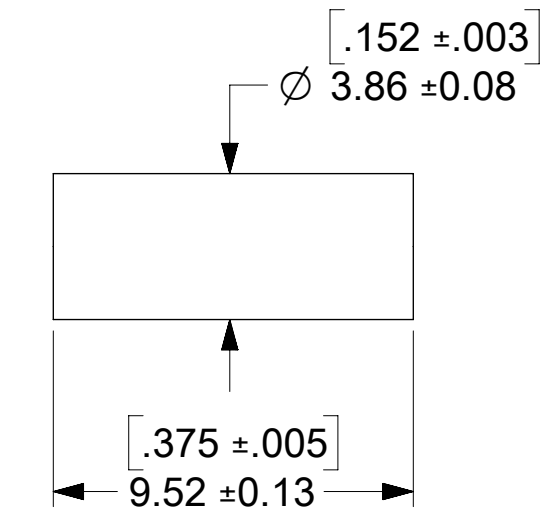
RECOMMENDED PANEL CUTOUT
MAX PANEL THICKNESS 3.18 (.125)



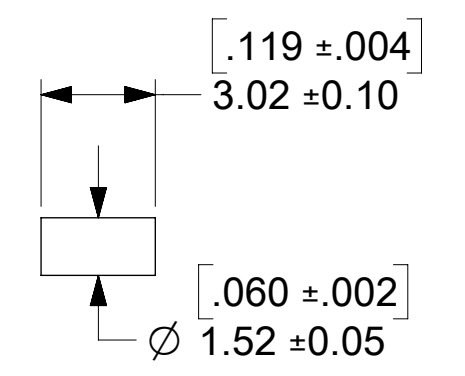
SMA JACK
INTERFACE



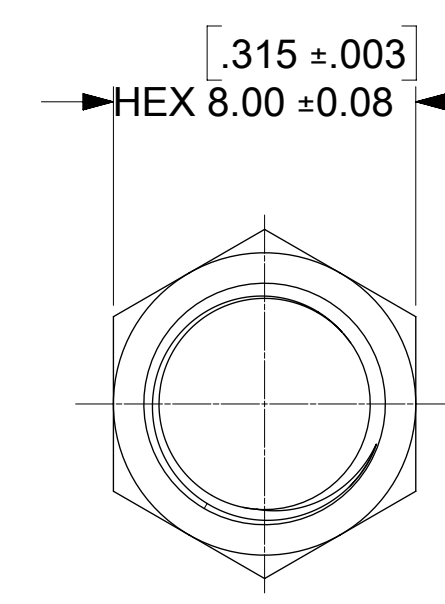
CONTACT



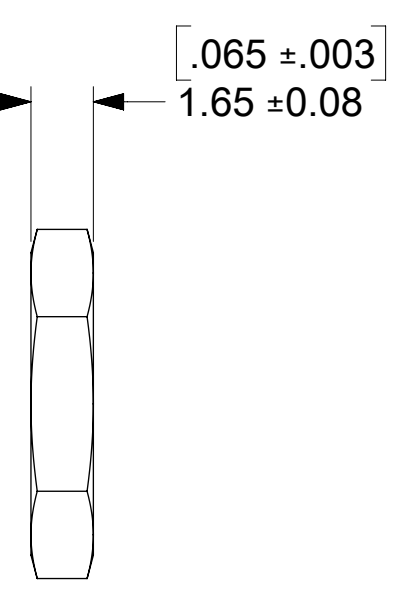
CRIMP TUBE



SPACER
FOR -0263 ONLY



JAM NUT



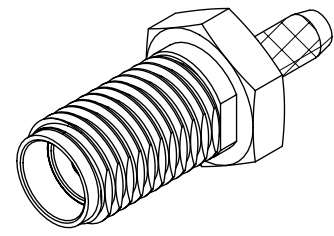
LOCK WASHER

73391-0266	GOLD (FLASH)	GOLD (10 MICRO-IN MIN)	GOLD (FLASH)	GOLD (10 MICRO-IN MIN)
73391-0265	GOLD (30 MICRO-IN MIN)	GOLD (30 MICRO-IN MIN)	GOLD (30 MICRO-IN MIN)	GOLD (30 MICRO-IN MIN)
73391-0264	GOLD (FLASH)	GOLD (FLASH)	GOLD (FLASH)	GOLD (10 MICRO-IN MIN)
73391-0263	GOLD (10 MICRO-IN MIN)	GOLD (30 MICRO-IN MIN)	NOT INCLUDING	NOT INCLUDING
73391-0262	GOLD (10 MICRO-IN MIN)	GOLD (30 MICRO-IN MIN)	NOT INCLUDING	NOT INCLUDING
73391-0261	GOLD (FLASH)	GOLD (10 MICRO-IN MIN)	NOT INCLUDING	NOT INCLUDING
73391-0260	GOLD (FLASH)	GOLD (10 MICRO-IN MIN)	GOLD (FLASH)	GOLD (10 MICRO-IN MIN)
PART NO.	BODY/CRIMP TUBE	CONTACT	JAM NUT	LOCK WASHER

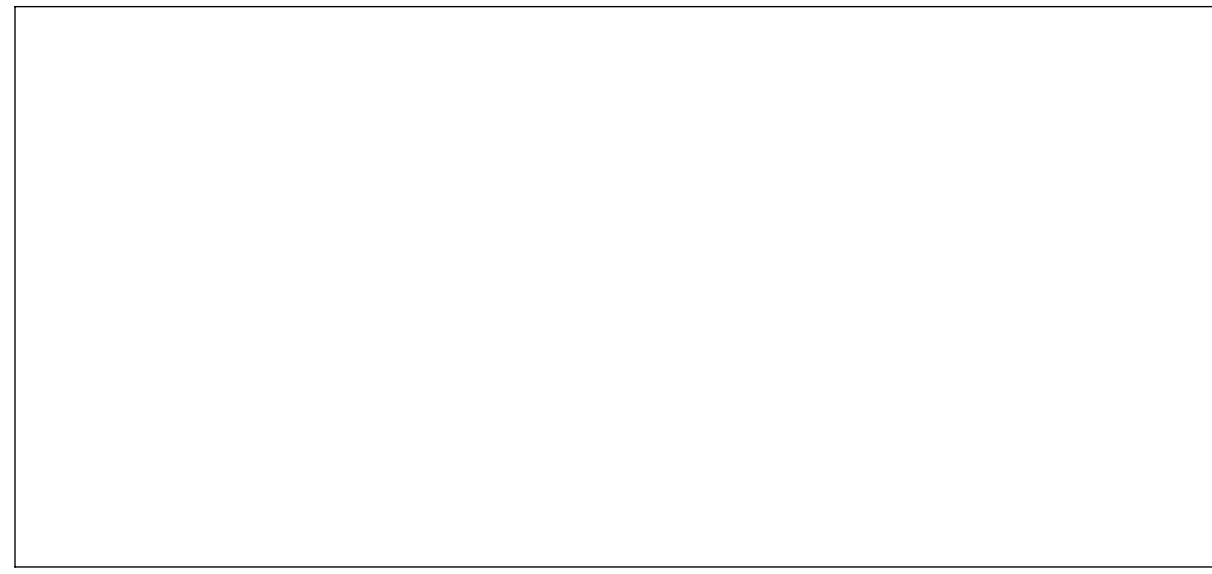
73391-0266	50PCS PER BAG	50PCS PER BAG
73391-0265	50PCS PER BAG	250PCS PER BAG
73391-0264	50PCS PER BAG	250PCS PER BAG
73391-0263	50PCS PER BAG	NOT INCLUDING
73391-0262	50PCS PER BAG	NOT INCLUDING
73391-0261	50PCS PER BAG	NOT INCLUDING
73391-0260	50PCS PER BAG	250PCS PER BAG
PART NO.	CONNECTOR PACKAGING	ACCESSORIES PACKAGING

PS-89675-346	ELEC/MECH PERFORMANCE
SPECIFICATION	DESCRIPTION

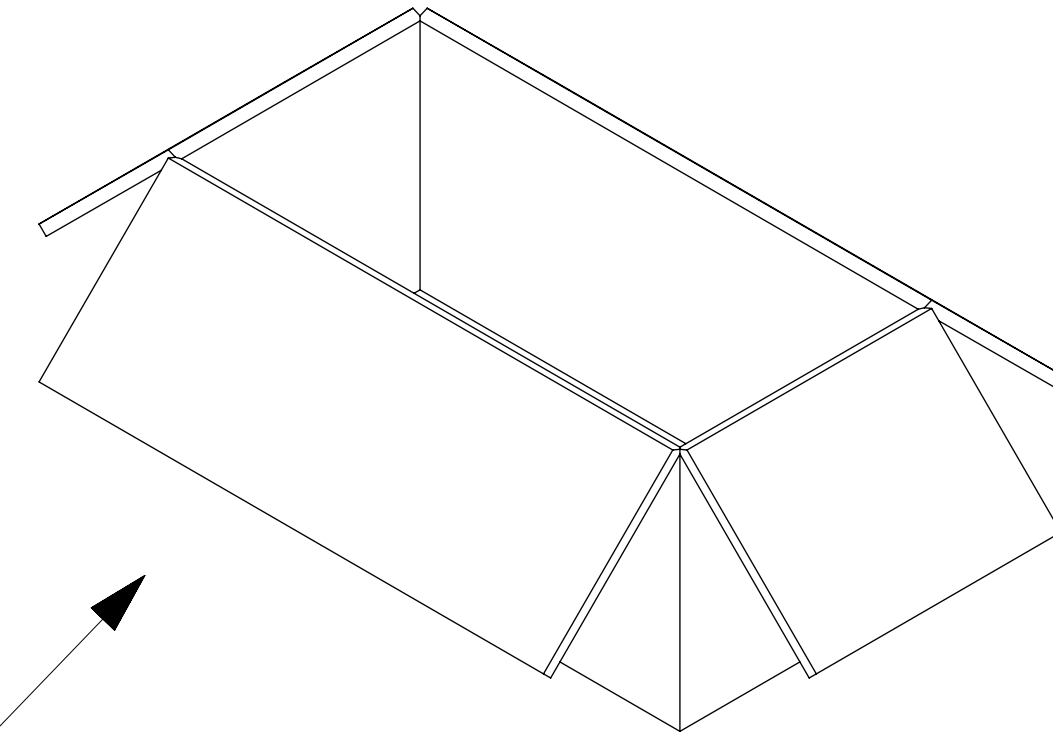
FUNCTIONAL SYMBOLS FA=0 EA=0 EP=0	THIS DRAWING CONTAINS INFORMATION THAT IS PROPRIETARY TO MOLEX ELECTRONIC TECHNOLOGIES, LLC AND SHOULD NOT BE USED WITHOUT WRITTEN PERMISSION		CURRENT REV DESC: EWR # 15667-A : ADDED -0266	
	DIMENSION UNITS	SCALE	PART NO	
	MM/INCH	NTS		
	GENERAL TOLERANCES (UNLESS SPECIFIED)			
DIVISIONAL SYMBOLS	ANGULAR TOL	±	°	
	4 PLACES	±		
	3 PLACES	±		
	2 PLACES	±		
1 PLACE	±			
0 PLACES	±			
DRAFT WHERE APPLICABLE MUST REMAIN WITHIN DIMENSIONS		THIRD ANGLE PROJECTION	DRAWING	SERIES
			C-SIZE	73391
DOCUMENT STATUS		RELEASE DATE	2023/02/21	04:15:15
P1				
DOCUMENT NUMBER		DOC TYPE	DOC PART	REVISION
SD-73391-026		PSD	000	B9
MATERIAL NUMBER		CUSTOMER	SHEET NUMBER	
SEE TABLE		GENERAL MARKET	1 OF 3	



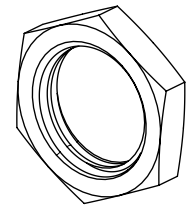
P/N: 73391-0260
 73391-0261
 73391-0262
 73391-0263
 73391-0264
 73391-0265



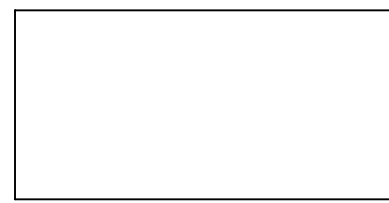
50 SET PER BAG
 P/N: 89707-0174



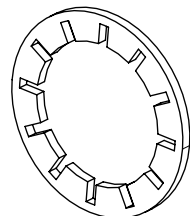
250 SET PER INNER
 CARTON BOX
 P/N: 89499-9026



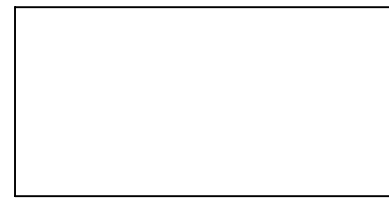
JAM NUT



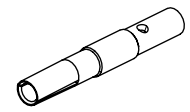
250 SET PER BAG



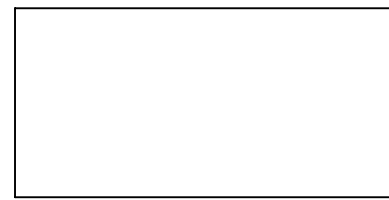
LOCK WASHER



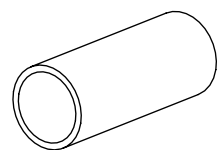
250 SET PER BAG



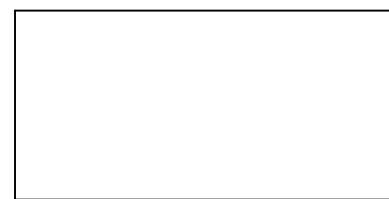
CONTACT



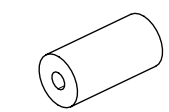
250 SET PER BAG



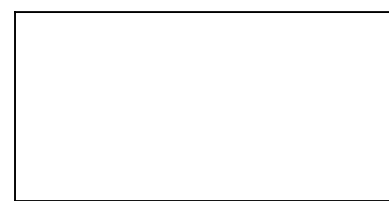
CRIMP TUBE



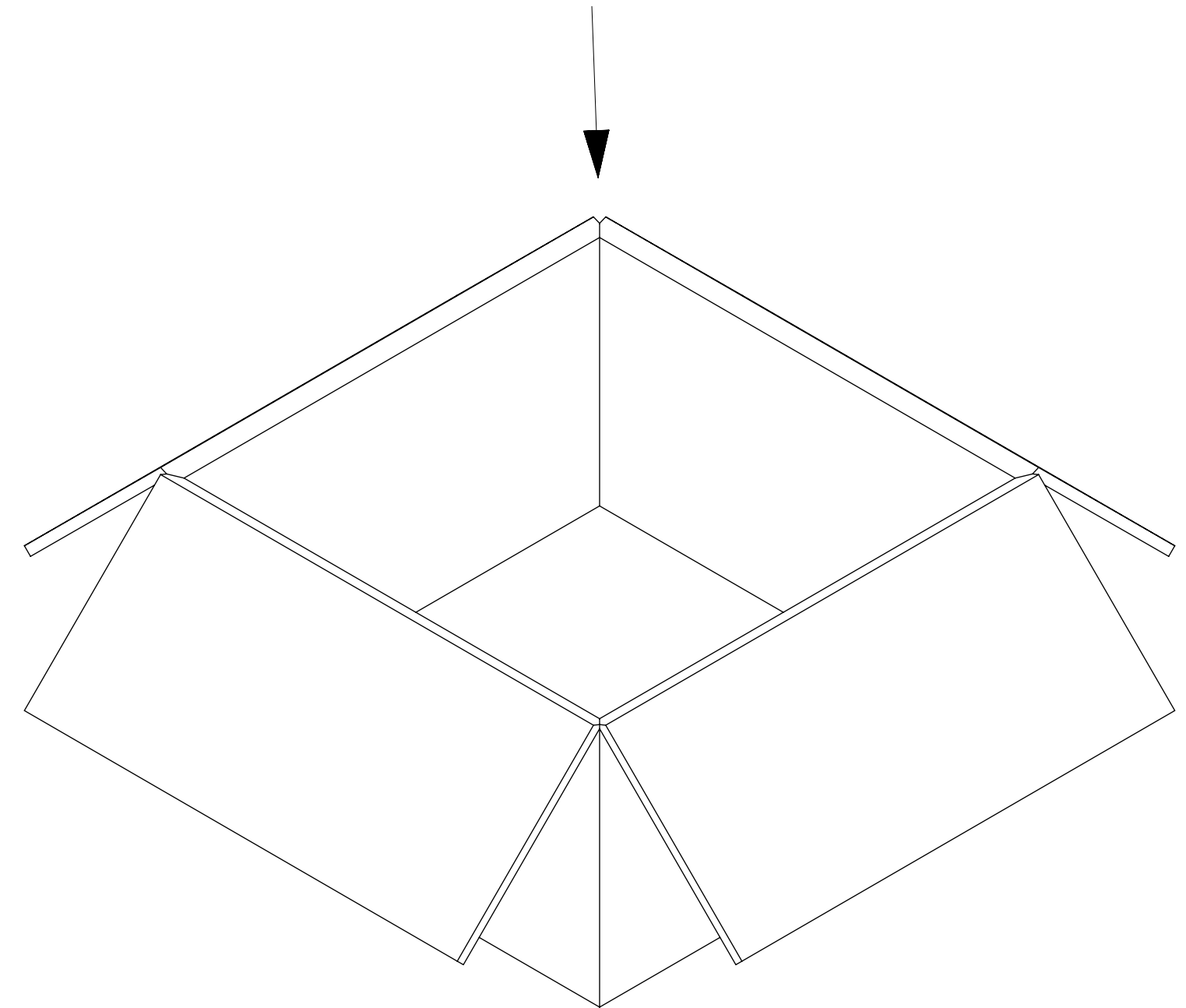
250 SET PER BAG



SPACER
 FOR -0263 ONLY

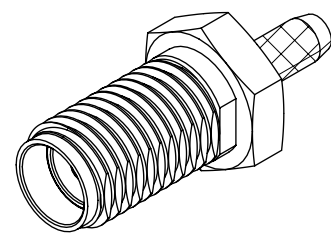


250 SET PER BAG

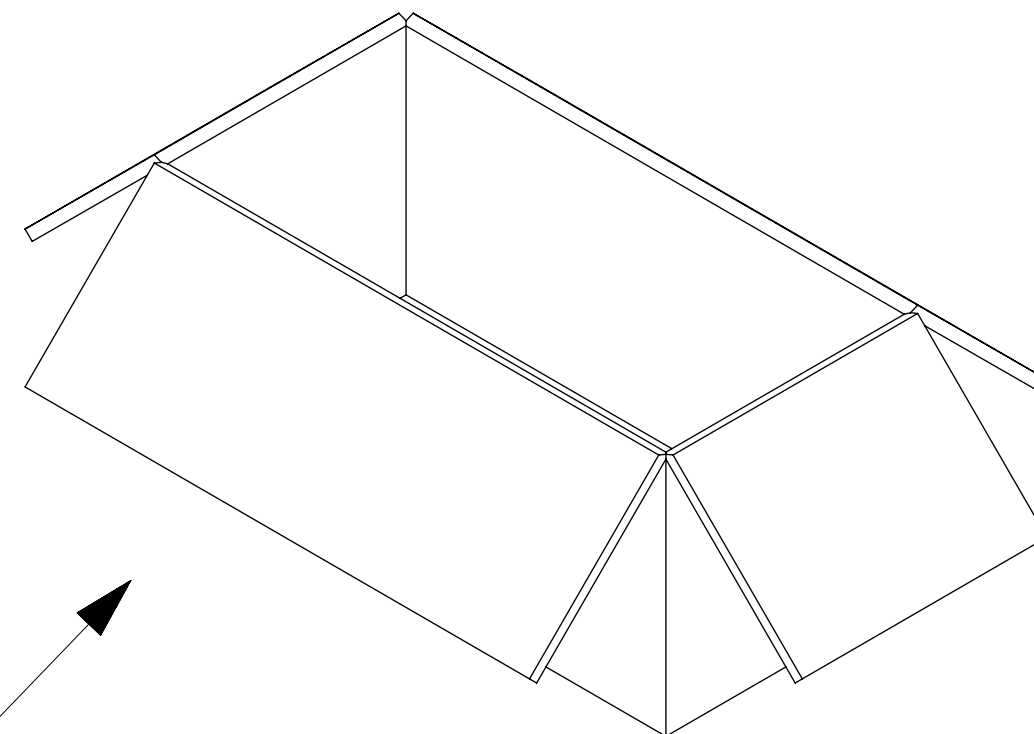
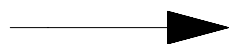
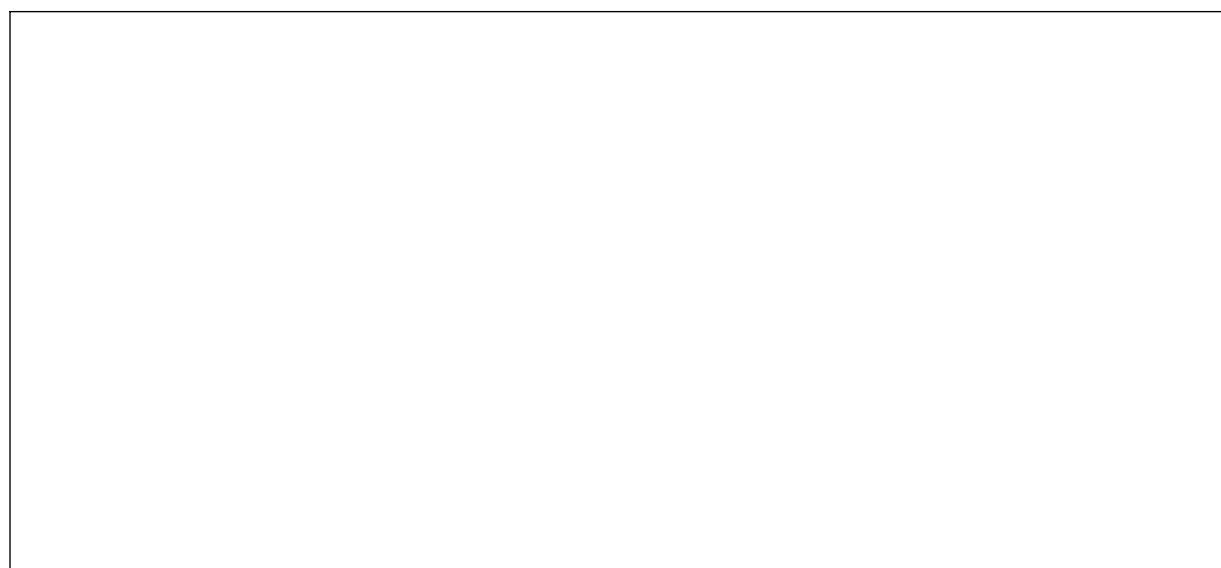


500 SET PER OUTER
 CARTON BOX
 P/N: 89499-9027

FUNCTIONAL SYMBOLS	THIS DRAWING CONTAINS INFORMATION THAT IS PROPRIETARY TO MOLEX ELECTRONIC TECHNOLOGIES, LLC AND SHOULD NOT BE USED WITHOUT WRITTEN PERMISSION										
	DIMENSION UNITS	SCALE	CURRENT REV DESC: EWR # 15667-A : ADDED -0266							PART NO	
$\frac{E}{A} = 0$	MM/INCH	NTS								molex	
$\frac{E}{C} = 0$	GENERAL TOLERANCES (UNLESS SPECIFIED)										
$\frac{E}{P} = 0$	ANGULAR TOL ± °										
DIVISIONAL SYMBOLS	4 PLACES ±		EC NO: 738061							SMA JACK STR BKHD RM FOR RG316/RG174 SMA-JC	
	3 PLACES ±		DRWN: JSU18		2023/02/08					PRODUCT CUSTOMER DRAWING	
	2 PLACES ±		CHK'D: YCHENG		2023/02/21					DOCUMENT NUMBER	
	1 PLACE ±		APPR: YCHENG		2023/02/21					SD-73391-026	
	0 PLACES ±		INITIAL REVISION:		2007/04/09					DOC TYPE DOC PART REVISION	
DRAFT WHERE APPLICABLE MUST REMAIN WITHIN DIMENSIONS		THIRD ANGLE PROJECTION		DRAWING		SERIES		MATERIAL NUMBER		CUSTOMER	
				C-SIZE		73391		GENERAL MARKET		SHEET NUMBER	
								2 OF 3			

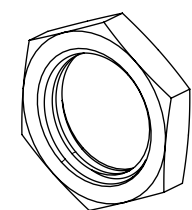


P/N: 73391-0266



50 SET PER BAG
P/N: 89707-0174

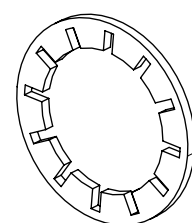
250 SET PER INNER
CARTON BOX
P/N: 89499-9026



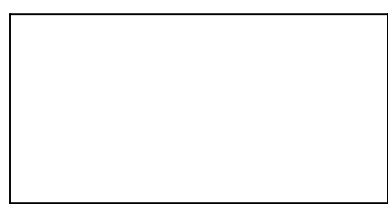
JAM NUT



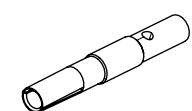
50 SET PER BAG



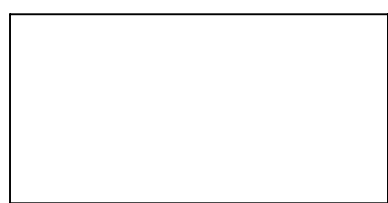
LOCK WASHER



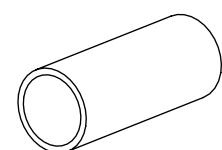
50 SET PER BAG



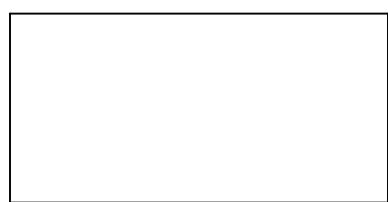
CONTACT



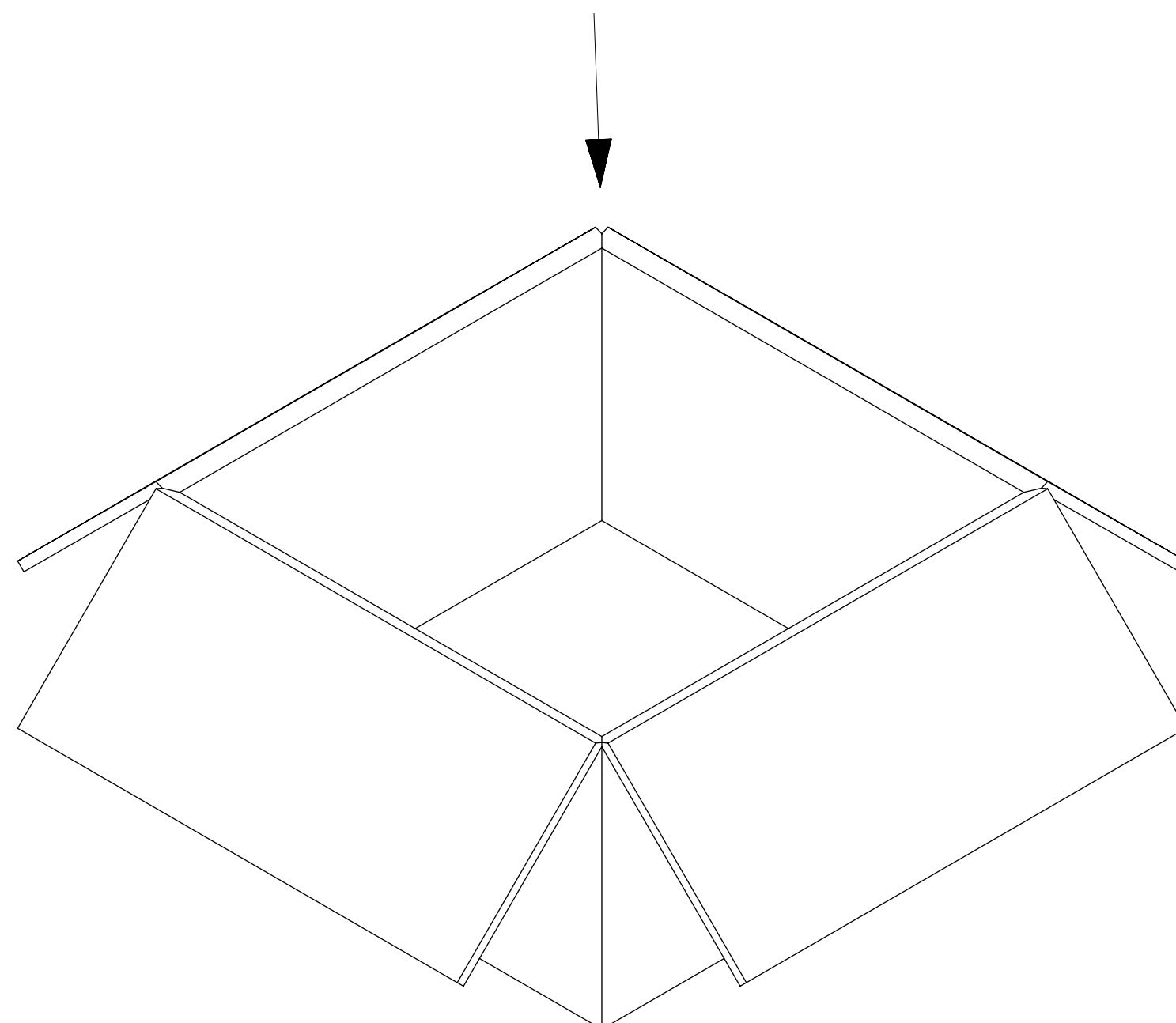
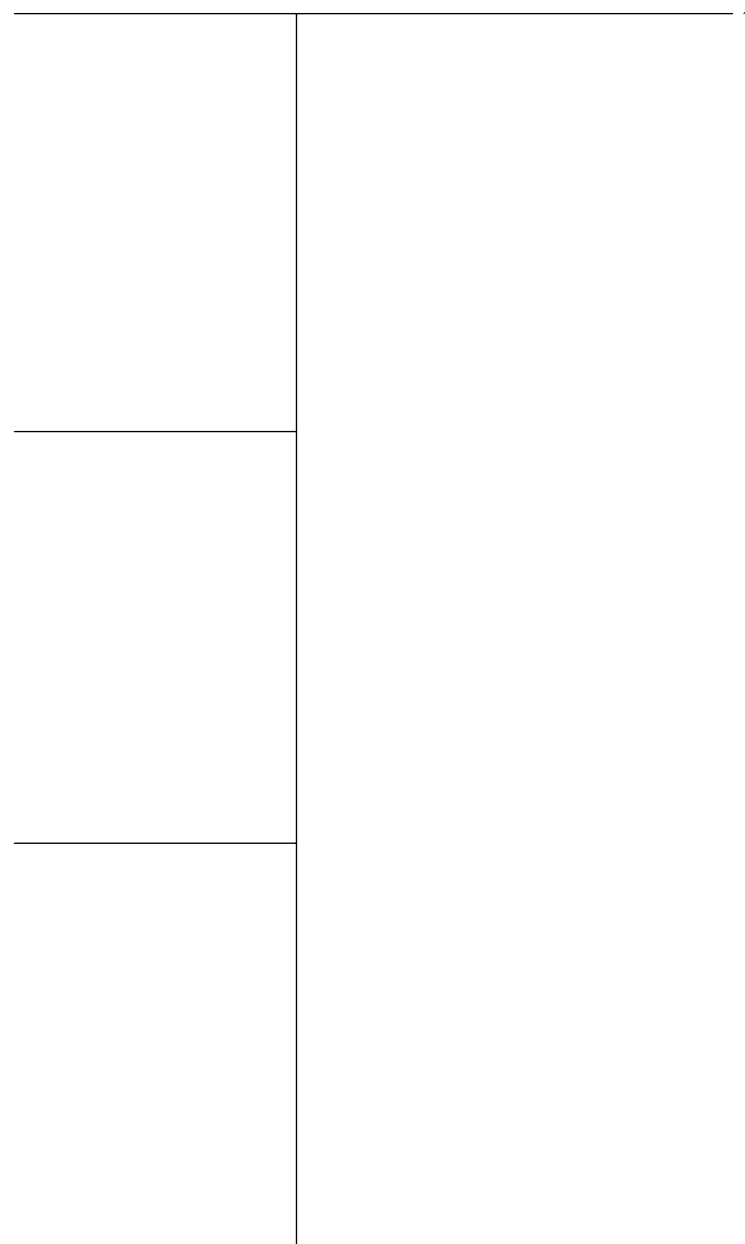
50 SET PER BAG



CRIMP TUBE



50 SET PER BAG



500 SET PER OUTER
CARTON BOX
P/N: 89499-9027

FUNCTIONAL SYMBOLS	THIS DRAWING CONTAINS INFORMATION THAT IS PROPRIETARY TO MOLEX ELECTRONIC TECHNOLOGIES, LLC AND SHOULD NOT BE USED WITHOUT WRITTEN PERMISSION										
	DIMENSION UNITS	SCALE	CURRENT REV DESC: EWR # 15667-A : ADDED -0266							PART NO	
$\nabla_A = 0$	MM/INCH	NTS								molex	
$\nabla_C = 0$	GENERAL TOLERANCES (UNLESS SPECIFIED)										
$\nabla_P = 0$	ANGULAR TOL		±	°	EC NO: 738061					SMA JACK STR BKHD RM FOR RG316/RG174 SMA-JC	
DIVISIONAL SYMBOLS	4 PLACES		±		DRWN: JSU18		2023/02/08			PRODUCT CUSTOMER DRAWING	
	3 PLACES		±		CHK'D: YCHENG		2023/02/21			DOCUMENT NUMBER	
	2 PLACES		±		APPR: YCHENG		2023/02/21			DOC TYPE	
	1 PLACE		±		INITIAL REVISION:					DOC PART	
0 PLACES		±			DRWN: AROBERTSON		2007/04/09			REVISION	
DRAFT WHERE APPLICABLE MUST REMAIN WITHIN DIMENSIONS		THIRD ANGLE PROJECTION		DRAWING		SERIES		MATERIAL NUMBER		CUSTOMER	
				C-SIZE		73391		SD-73391-026		GENERAL MARKET	
										SHEET NUMBER	
										3 OF 3	

DOCUMENT STATUS	P1	RELEASE DATE	2023/02/21	04:15:15
-----------------	----	--------------	------------	----------