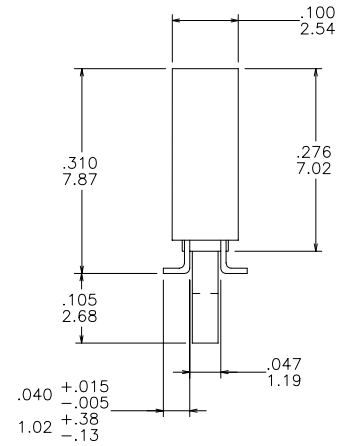
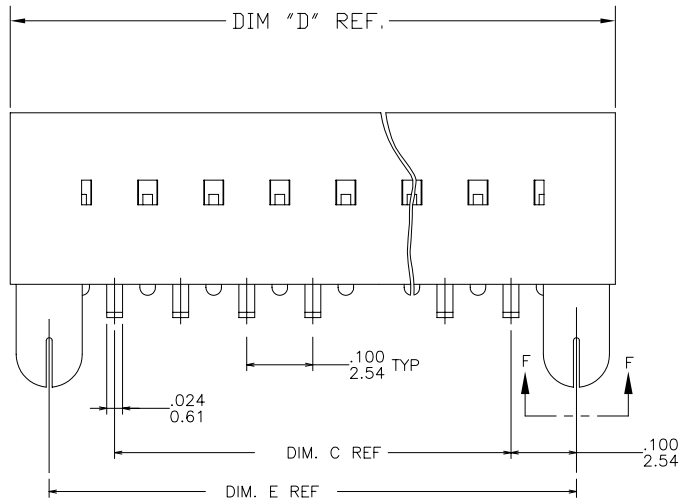
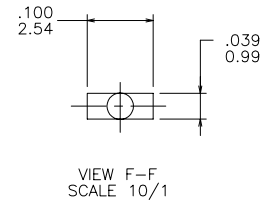
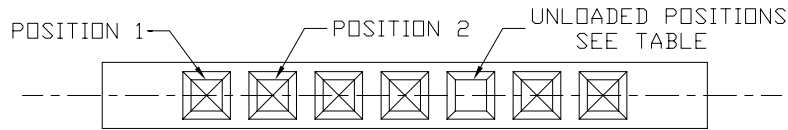


PRODUCT NUMBER
SEE SHEET 3



FCI
FCIconnect.com

Copyright FCI

mat'l. code SEE NOTES 1 & 3		surface ISO 1302 ✓	tolerance ISO 406 ISO 1101	projection ISO 1101	product family DUBOX
ltr	ecn no	dr	date	tolerances unless otherwise specified	title SMT SINGLE ROW POL. LATCHED VCC ASSEMBLY
A	V03-0371	HTB	04/01/03	linear .XX±.01/.3	
B	V03-0407	LP	4/10/03	linear .XXX±.005/.13	scale 1:1
C	V05-0463	SV	06/15/05	linear .XXXX±.0020/.051	
D	M07-0114	AGS	02/15/07	dr T. BREWBAKER 04/01/03	sheet 1 of 3 size 10026805 A3
E	M07-0198	MHT	4/23/07	enr H. SUNDY 04/01/03	
				chr H. SUNDY 04/01/03	
				appd H. SUNDY 04/01/03	type Product Customer Drawing
sheet index	revision sheet	E 1	E 2	E 3	

form: A3

PRODUCT NUMBER
SEE SHEET 3

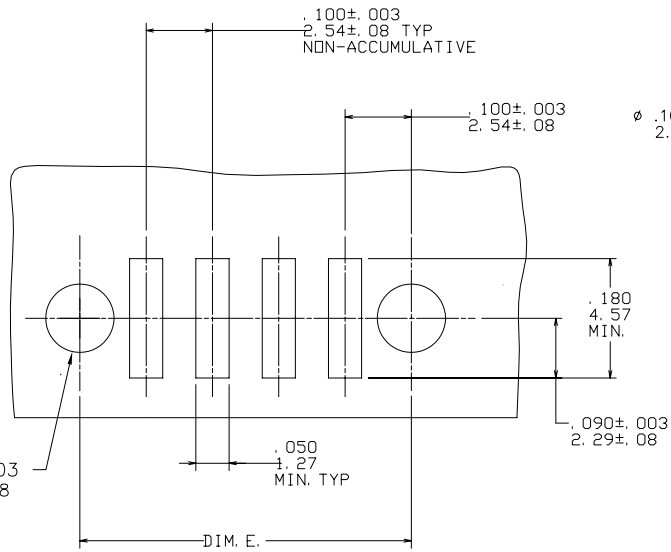


FIGURE A
TOP ENTRY
.025/.64 SQ PIN

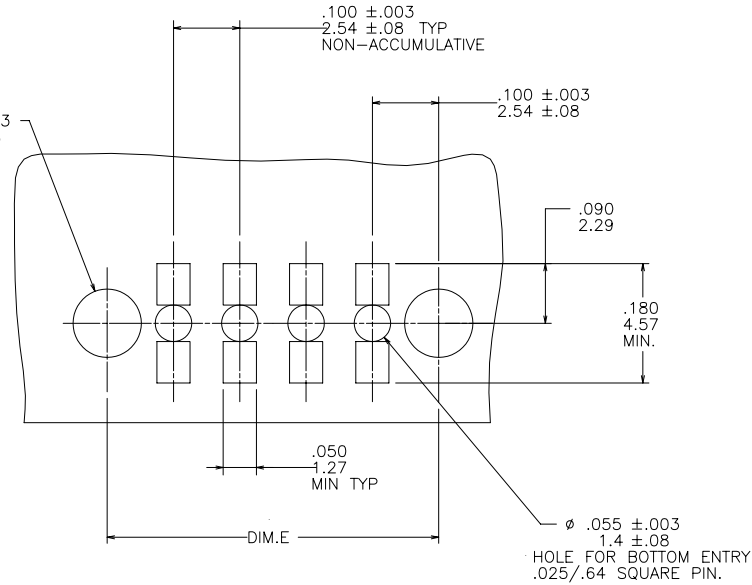


FIGURE B
BOTTOM ENTRY (THROUGH PWB)
.025/.64 SQ PIN

FCJ
FCJconnect.com
Copyright FCJ

mat'l. code SEE NOTES 1 & 3		surface ISO 1302 ✓		tolerance ISO 406 ISO 1101		projection ⊕		product family DUBOX	
ltr		ecn no		dr		date		title	
E								SMT SINGLE ROW POL. LATCHED VCC ASSEMBLY	
				tolerances unless otherwise specified		INCH/MM		sheet 2 of 3 size	
		angles		linear		.XX±.01/.3		10026805	
		0°±2°				.XXX±.005/.13		A3	
		dr		T. BREWBAKER		04/01/03		type Product Customer Drawing	
		enrg		H. SUNDY		04/01/03			
		chr		H. SUNDY		04/01/03			
		appd		H. SUNDY		04/01/03			
sheet index		revision sheet							

PRODUCT NUMBER	NO. OF POS.	DIM C	DIM D	DIM E	UNLOADED POSITIONS
10026805-001	1 X 6	.500/12.70	.817/20.75	.700/17.78	5
10026805-001LF	1 X 6	.500/12.70	.817/20.75	.700/17.78	5

NOTE 8

NOTES:

- ① TERMINAL MATERIAL: PHOSPHOR BRONZE.
- 2. RECOMMENDED APPLICATION DATA:
 - A. RECOMMENDED SOLDER PAD PATTERN IS SHOWN IN FIG. A & B.
 - B. ALL MATING PINS TO BE .025/.64 SQUARE ON TRUE CENTER OF GIVEN TERMINAL SPACING WITHIN .015/0.38 DIA.
 - C. SUGGESTED MATING PIN LENGTH $.210 \pm .020/5.33 \pm 0.51$.
- ③ HOUSING MATERIAL: FILLED P.P.S.
 FLAME RETARDANT PER UL-94V-0.
 THIS PART WILL WITHSTAND EXPOSURES TO 260°C
 PEAK TEMPERATURE FOR 20 SECONDS IN WAVE SOLDER,
 INFRA-RED OR VAPOR PHASE SOLDER PROCESS.
 COLOR: BLACK.
- ④ PRESTAMPED POST PLATED TERMINALS.
- ⑤ MARK "FCI", FCI FINAL PART NO. AND DATE CODE ON TUBE LABEL.
- 6. STANDARD PACKAGING PER BUS-14-097.
- 7. PLATING: CONTACT AREA $30\mu/1.27\mu\text{m}$ GOLD OVER $50\mu/.76\mu\text{m}$ NICKEL OR GXT (SEE NOTE 10)
 SOLDER TAIL IS $200\mu/5.08\mu\text{m}$ PURE TIN.
- ⑧ ADD LF SUFFIX AT THE END OF PART NUMBER FOR LEAD FREE OPTION.
- 9. THESE PRODUCTS MEETS EUROPEAN UNION DIRECTIVES AND OTHER COUNTRY REGULATION AS DESCRIBED IN GS-22-008.
- ⑩ PLATING OPTIONS:
 MAY BE EITHER GOLD OR GXT PLATED AT MANUFACTURER'S OPTION.



Copyright FCI

mat'l. code SEE NOTES 1 & 3		surface ISO 1302 ✓	tolerance ISO 406 ISO 1101	projection 	product family DUBOX
ltr	ecn	no	dr	date	tolerances unless otherwise specified
E					angles linear
					$.XX \pm .01/.3$ $.xxx \pm .005/.13$ $.xxxx \pm .0020/.051$
					0'±2'
					dr T. BREWBAKER 04/01/03
					enr H. SUNDY 04/01/03
					chr H. SUNDY 04/01/03
					appd H. SUNDY 04/01/03
sheet index	revision sheet				



title
SMT SINGLE ROW POL.
LATCHED VCC ASSEMBLY

dwg no 10026805 sheet 3 of 3 size A3

type Product Customer Drawing