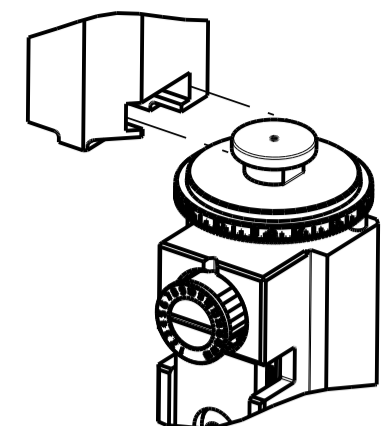


PART NUMBER	REVISION	DESCRIPTION	FEED TYPE
2151245-2	C	FINE CRIMP HEIGHT ADJUST	PNEUMATIC
7-2151245-2	C	PNEUMATIC AND CRIMP TOOLING KIT	PNEUMATIC
7-2151245-7	A	CRIMP TOOLING KIT	-

ATLANTIC VERSION TERMINATOR INTERFACE ADAPTER



APPLICATOR DATA		
CRIMP	SIZE	TYPE
WIRE	2.79 mm [.110]	F
INSUL	3.94 mm [.155]	F

APPLICATOR INSTRUCTIONS 408-35042

TERMINAL DATA: TE TERMINAL TE CRIMP SPECIFICATION

TERMINAL NAME: STANDARD TIMER CONTACT	
WIRE STRIP LENGTH 4.20-4.80 mm [.165-.189 IN]	INSULATION DIAMETER RANGE Ø2.40-3.70 mm [.094-.146 IN]
TERMINAL APPLICATION SPECIFICATION (A)1114-18079 (B)1114-18080	-

TE TERMINAL	TE TERMINAL	TE TERMINAL	TE TERMINAL
(A) 925595-1	(A) 925595-7	(B) 926006-1	(B) 964202-1
(A) 925595-2	(B) 925612-1	(B) 926006-2	(B) 964202-2
(A) 925595-3	(B) 925612-2	(B) 926006-3	(B) 964202-3
(A) 925595-4	(B) 925612-3	(B) 926973-1	(B) 964202-4
(A) 925595-5	(A) 925621-1	(B) 928805-3	
(A) 925595-6	(A) 925621-2	(B) 928805-5	

WIRE SIZE	CRIMP HEIGHT mm [INCH]	CRIMP HEIGHT REFERENCE SETTING
2.50mm2	1.70 +/- 0.05 [.067 +/- .002]	5.4
2.00mm2	1.58 +/- 0.05 [.062 +/- .002]	6.9
1.75mm2	1.52 +/- 0.05 [.060 +/- .002]	7.2
1.50mm2	1.45 +/- 0.05 [.057 +/- .002]	8.2
1.25mm2	1.39 +/- 0.05 [.055 +/- .002]	8.7
1.00mm2	1.32 +/- 0.05 [.052 +/- .002]	9.4

- 1. RECOMMENDED SPARE PARTS
- 2. REFER TO SUPPLIED INSTRUCTION SHEET FOR CLEANING, LUBRICATION AND STORAGE OF APPLICATOR.
- 3. APPLY PART NUMBER 2-23419-6 LOCTITE TO THREADS OF ITEM 242.
- 4. CRIMP HEIGHT REFERENCE SETTING WAS THE SETTING USED WHEN THE APPLICATOR WAS QUALIFIED AT THE FACTORY. ADJUSTMENT MAY BE NECESSARY WHEN RUNNING APPLICATOR IN THE FIELD.
- 5. WIRE SIZES 1.25mm2 AND 1.00mm2 NOT COMPATIBLE WITH TERMINAL P/N 964202.
- 6. TERMINAL FEED NOT COMPATIBLE WITH MECHANICAL FEED.
- 7. UNLESS SPECIFIED OTHERWISE TORQUE VALUES SHALL BE USED PER DOCUMENT, 101-35000.

**\*WARNING**  
ON INSTALLATION, SET WIRE DISC TO CRIMP HEIGHT REFERENCE SETTING FOR LARGEST WIRE SIZE. CRIMP HEIGHT REFERENCE SETTINGS GREATER THAN THE VALUE SHOWN MAY CAUSE DAMAGE TO THE CRIMP TOOLING, REFER TO THE INSTRUCTION SHEET FOR PROPER SETUP AND ADJUSTMENTS.

LOC	DIST	REV	DATE	BY	APPV
A	66	A	03JAN2014	BH	GB
		A1	20OCT2015	YY	GB
		B	23MAY2018	VLA	JDG
		C	25MAY2021	FJ	TE

QTY	UNIT	ITEM NO	DESCRIPTION	ITEM NO
-	1	1	2119641-1 FEED CAM, AIR FEED	248
-	1	1	2119082-9 CAM, SNAIL, INSULATION ADJUSTMENT	244
-	1	1	2079764-1 WASHER, WAVE SPRING, CREST-TO-CREST	243
-	1	1	2119083-1 RETAINER, INSULATION DIAL	242
-	1	1	7-18023-7 SCR, SKT HD CAP M3 X 4.0	241
-	1	1	2844940-1 AIR FEED MODULE	238
-	REF	REF	994970-2 COUNTER, MAGNETIC	164
-	1	1	1-18028-2 WASHER, FLAT, REG M4	119
-	1	1	2844908-1 SCREW, LOCKING	99
-	1	1	2844907-1 POST, LOCKING	98
-	1	1	455888-4 SPACER, CRIMPER	82
-	1	1	5-547505-2 SPRING, COMPRESSION	77
-	1	1	854769-4 HOLDER, INS	74
-	1	1	1803607-3 DOCUMENTATION PACKAGE	71
-	1	1	2119740-1 TAG, IDENTIFICATION	67
-	2	2	2168078-1 SCREW, DRIVE, RH, RoHS, 2 x .188	66
-	1	1	2168083-2 SCR, SKT HD CAP, RoHS, M4 X 8.0	60
-	1	1	5-18022-5 SCR, HEX HD CAP, M4 X 6.0	59
-	1	1	21028-2 PIN, SLOTTED SPRING .062 X .250	58
-	1	1	1338685-1 PAWL, FEED	56
-	4	4	2168083-3 SCR, SKT HD CAP, RoHS, M4 X 12.0	54
-	2	2	1-2168083-0 SCR, SKT HD CAP, RoHS, M4 X 10	53
-	1	1	5018030-1 NUT, HEX, REG, RoHS, M3	52
-	1	1	811242-5 BUMPER, HOLD DOWN	51
-	1	1	690753-2 SPACER, TONKER	50
-	1	1	18023-9 SCR, SKT HD CAP M4 X 6.0	49
-	1	1	1803583-9 APPLICATOR BASIC ASSEMBLY, SF	46
-	1	1	1803515-1 RAM ASSEMBLY, SF ATLANTIC	44
-	1	1	1803602-1 SCR, BHSC, RoHS (M8 X 25)	41
-	1	1	1752356-3 SUPPORT, TERMINAL	34
-	2	2	2079383-5 SCR, BHSC, RoHS (M4 X 20)	33
-	2	2	2-2844962-6 SPACER, CYLINDRICAL, STRIP GUIDE	30
-	1	1	2844992-1 ASSEMBLY, STRIP GUIDE	29
-	1	1	455888-3 SPACER, CRIMPER	28
-	1	1	1320928-2 STRIP GUIDE	24
-	1	1	2168083-2 SCR, SKT HD CAP, RoHS, M4 X 8.0	21
-	1	1	1-18028-2 WASHER, FLAT, REG M4	20
-	1	1	2119533-1 STRIPPER, SIDE FEED	19
-	1	1	2119806-1 INSERT, SHEAR	13
-	1	1	3-22280-3 SPRING, COMPRESSION	12
-	1	1	1-356885-4 STOP, SHEAR	11
-	1	1	2119805-1 SHEAR HOLDER, FRONT	10
-	1	1	1803095-6 FLOATING SHEAR, FRONT	9
1	2	1	1333207-8 ANVIL, COMBINATION .110	8
-	-	-	-	7
-	-	-	-	6
-	1	1	1-2119780-1 DEPRESSOR, SHEAR	5
-	1	1	1-238011-7 BLOCK, CRIMPER SPACER	4
1	2	1	2-2119582-6 CRIMPER, INSULATION F PREMIUM	3
-	1	1	455888-4 SPACER, CRIMPER	2
1	2	1	456408-2 CRIMPER, WIRE PREMIUM	1

ATLANTIC VERSION  
Shown on sheets 1 of 4 & 2 of 4  
(Pacific version shown on sheets 3 of 4 & 4 of 4)

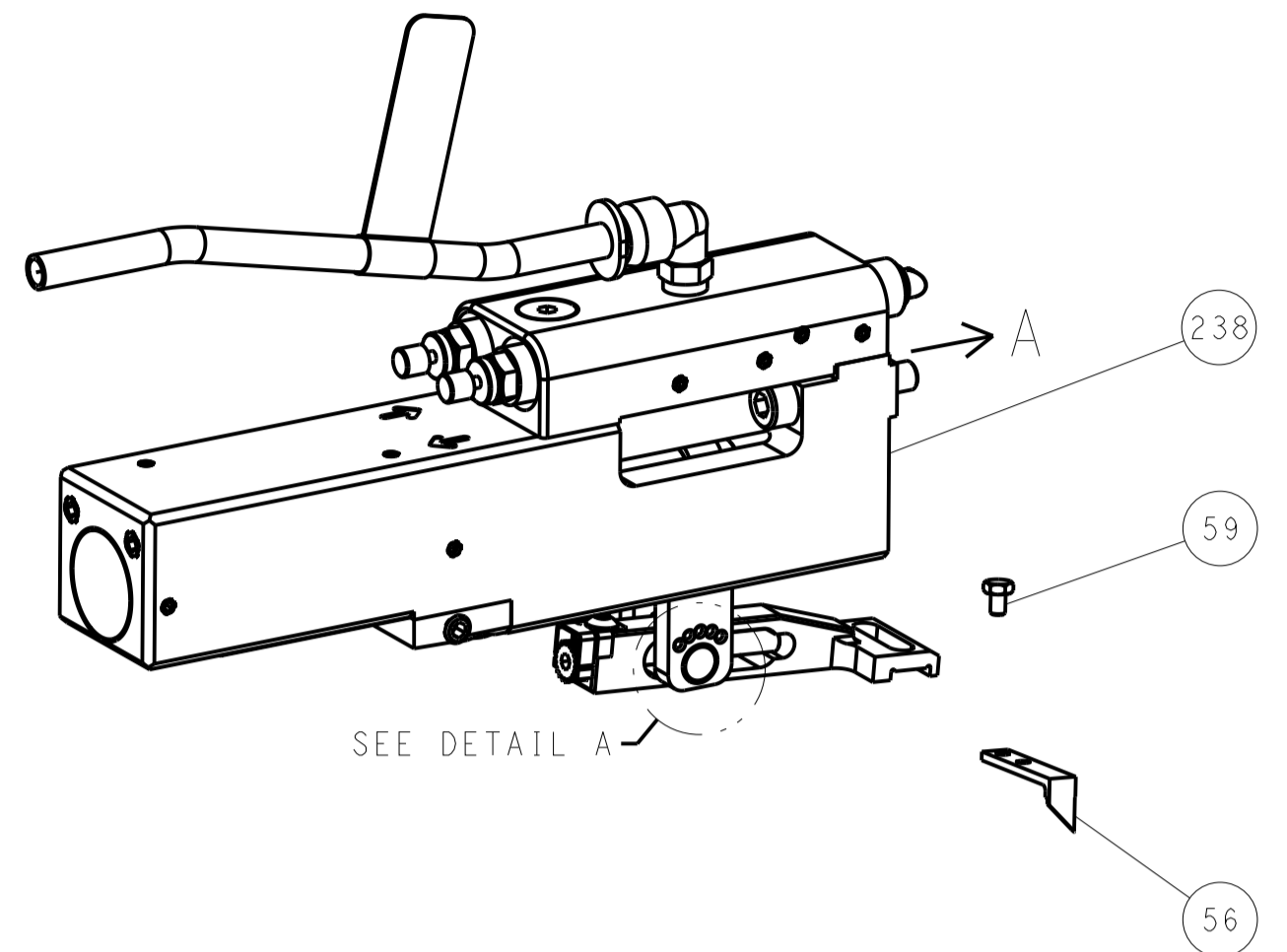
DIMENSIONS: mm		TOLERANCES UNLESS OTHERWISE SPECIFIED:		DWG: 05SEP2012		CHK: L.ZHANG		APV: S.XI		DATE: 05SEP2012	
0 PLC ±		1 PLC ±		2 PLC ±		3 PLC ±		4 PLC ±		APPLICATOR SPEC	
MATERIAL		FINISH		WEIGHT		SCALE: 1:2		SHEET 1 OF 4		REV C	

Customer Drawing: A1 00779 C=2151245

LOC		DIST		REVISIONS			
A	66	P	LTN	DESCRIPTION	DATE	DWN	APVD
		-		SEE SHEET 1	-	-	-

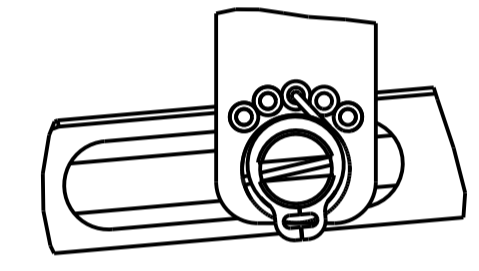
# FEED TYPE

## PNEUMATIC

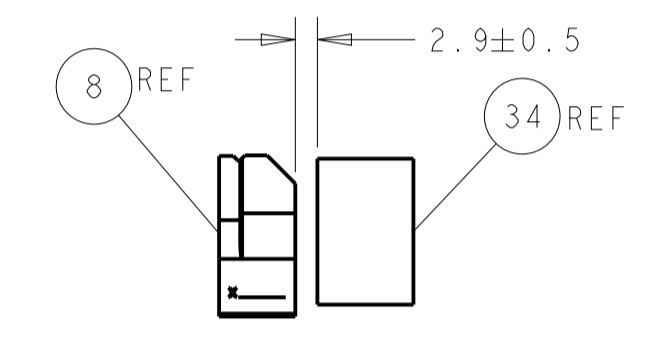
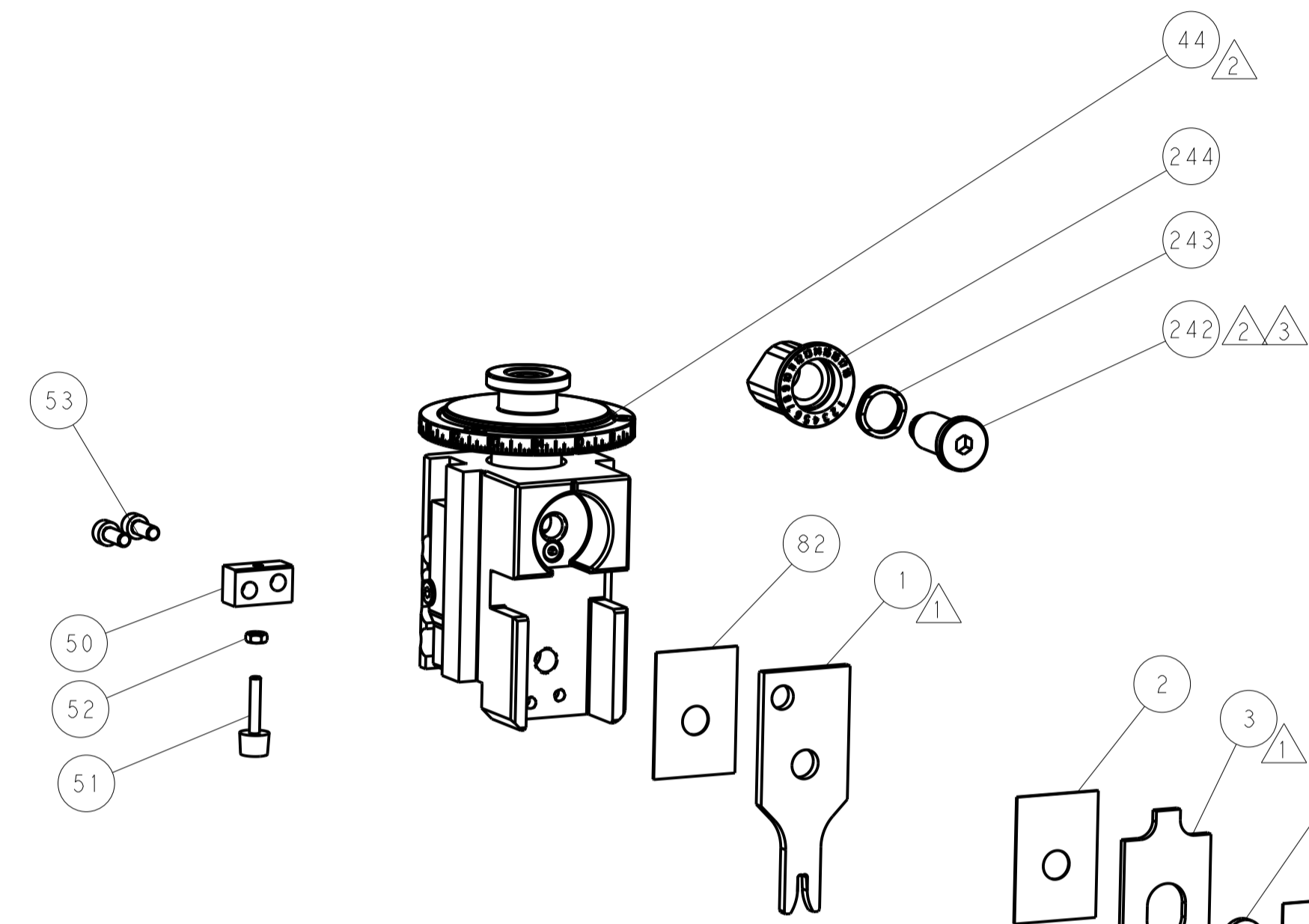


SEE DETAIL A

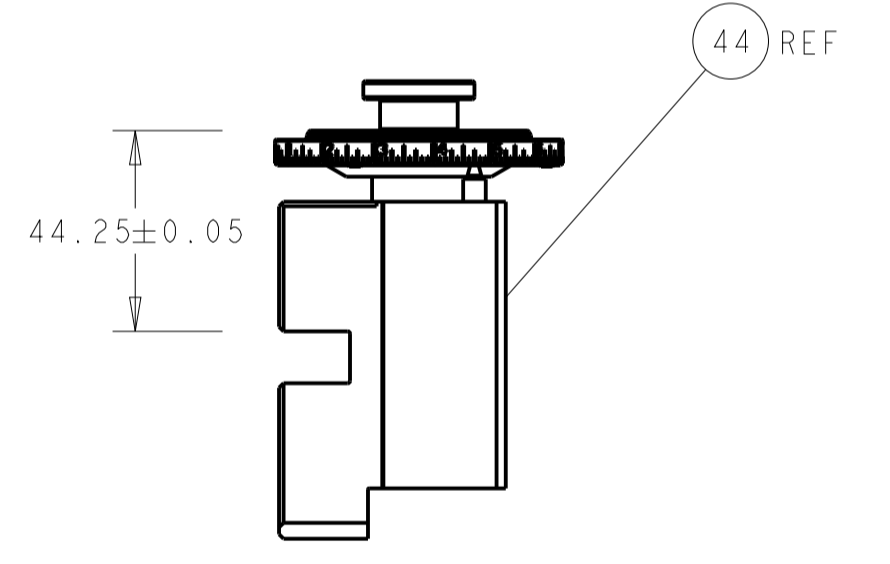
## FEED SPRING SETTING POSITION (SHOWN FROM REAR SIDE)



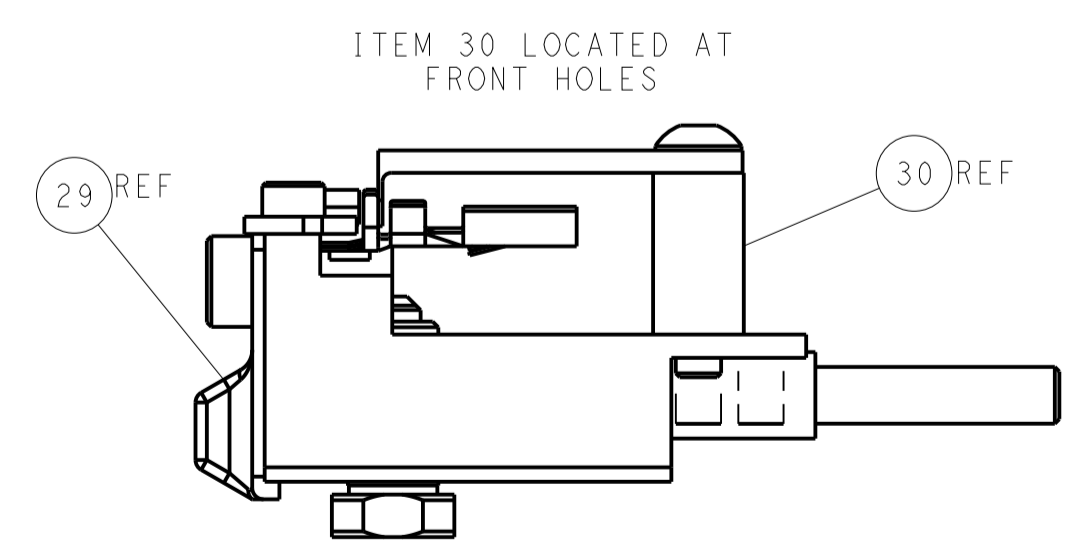
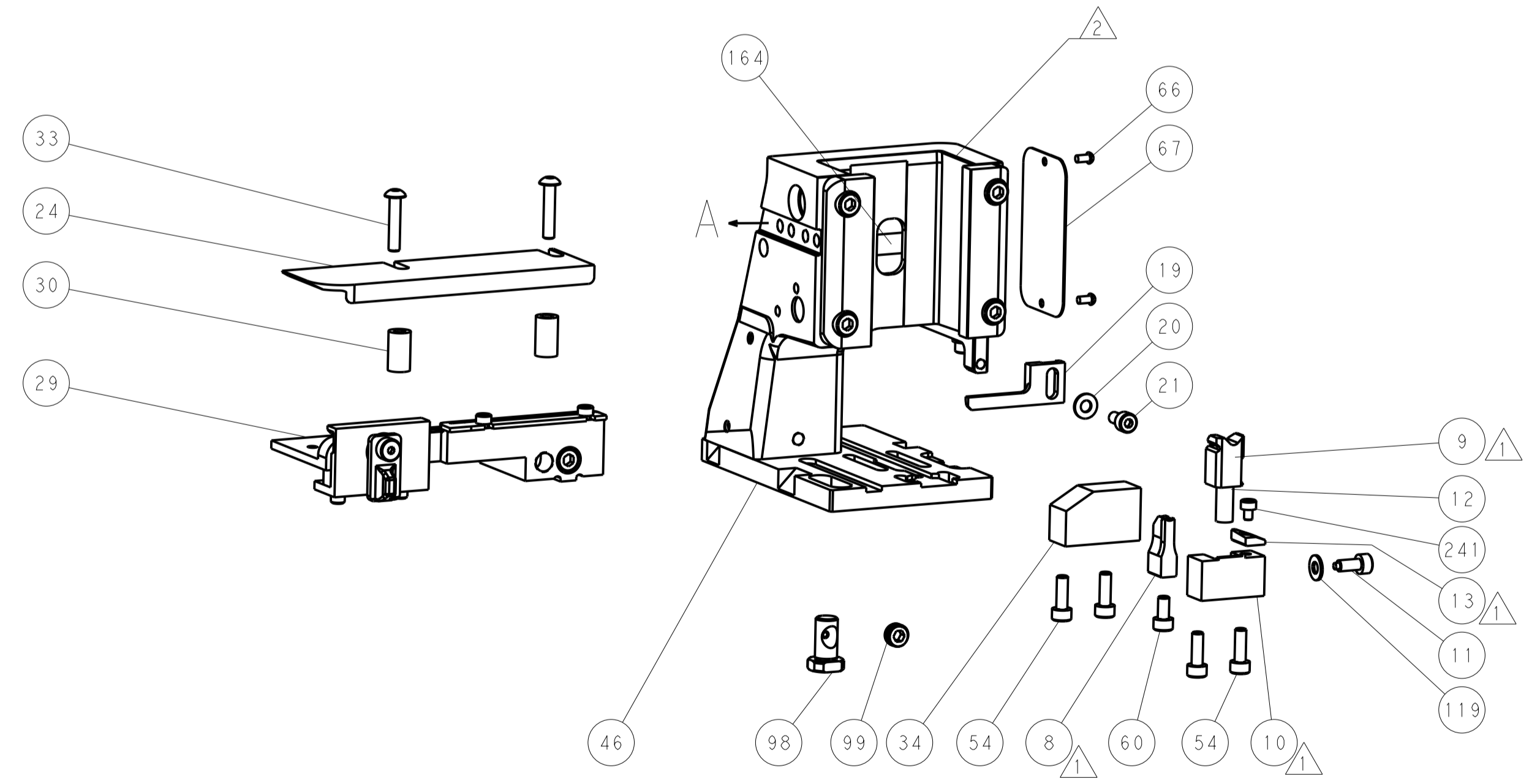
DETAIL A



TERMINAL SUPPORT LOCATION

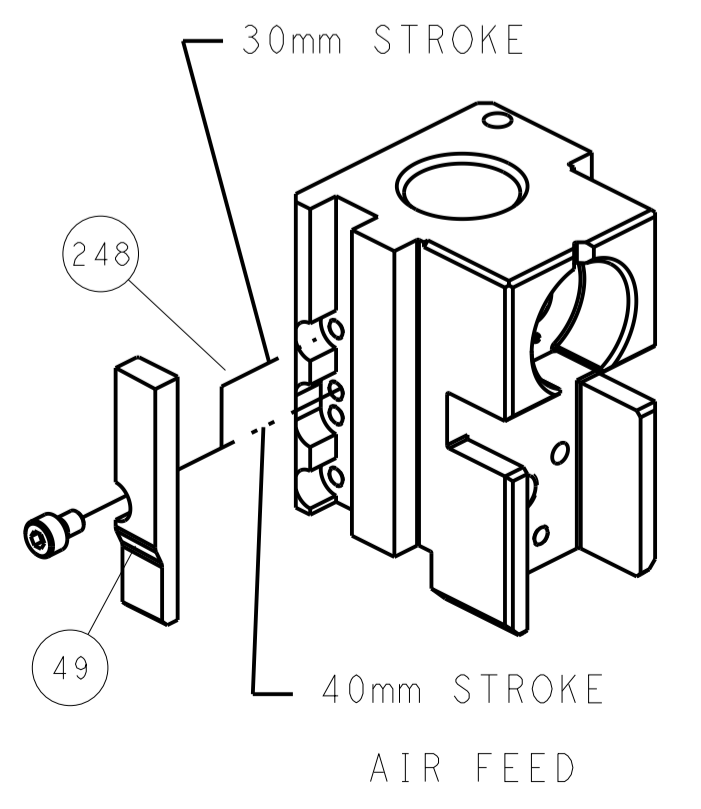


RAM SET-UP



FEED TRACK POSITION  
GUIDE BY INSULATION BARREL

## CAM POSITION

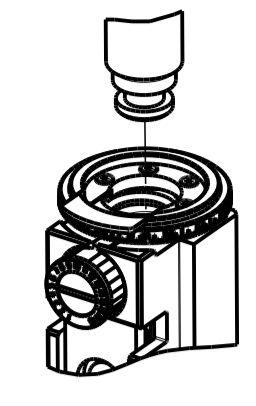


**ATLANTIC VERSION**  
 Shown on sheets 1 of 4 & 2 of 4  
 (Pacific version shown on sheets 3 of 4 & 4 of 4)

DIMENSIONS:		TOLERANCES UNLESS OTHERWISE SPECIFIED:		DWN L. ZHANG 05SEP2012		TE Connectivity Harrisburg, PA 17105-3608	
mm	0 PLC ±	1 PLC ±	2 PLC ±	3 PLC ±	4 PLC ±	NAME Ocean Side Feed Applicator	
MATERIAL:		FINISH:		APVD S. XI 05SEP2012		RESTRICTED TO	
				PRODUCT SPEC		SIZE CAGE CODE DRAWING NO	
				APPLICATION SPEC		A11 00779 ©=2151245	
				WEIGHT		SCALE 1:2 SHEET 2 OF 4 REV C	
				CUSTOMER DRAWING			

PART NUMBER	REVISION	DESCRIPTION	FEED TYPE
2-2151245-2	C	FINE CRIMP HEIGHT ADJUST	PNEUMATIC
7-2151245-7	A	CRIMP TOOLING KIT	-

PACIFIC VERSION TERMINATOR  
 INTERFACE ADAPTER



APPLICATOR DATA		
CRIMP	SIZE	TYPE
WIRE	2.79 mm [.110]	F
INSUL	3.94 mm [.155]	F

APPLICATOR INSTRUCTIONS  
 408-35042

TERMINAL DATA: TE TERMINAL		TE CRIMP SPECIFICATION	
TERMINAL NAME: STANDARD TIMER CONTACT			
WIRE STRIP LENGTH 4.20-4.80 mm [1.65-.189 IN]		INSULATION DIAMETER RANGE Ø2.40-3.70 mm [1.094-.146 IN]	
TERMINAL APPLICATION SPECIFICATION	(A)114-18079	-	-
	(B)114-18080	-	-

TERMINALS APPLIED			
TE TERMINAL	TE TERMINAL	TE TERMINAL	TE TERMINAL
(A) 925595-1	(A) 925595-7	(B) 926006-1	(B) 964202-1
(A) 925595-2	(B) 925612-1	(B) 926006-2	(B) 964202-2
(A) 925595-3	(B) 925612-2	(B) 926006-3	(B) 964202-3
(A) 925595-4	(B) 925612-3	(B) 926973-1	(B) 964202-4
(A) 925595-5	(A) 925621-1	(B) 928805-3	
(A) 925595-6	(A) 925621-2	(B) 928805-5	

WIRE SIZE	CRIMP HEIGHT mm [INCH]	CRIMP HEIGHT REFERENCE SETTING
2.50mm2	1.70 +/- 0.05 [1.067 +/- .002]	5.4
2.00mm2	1.58 +/- 0.05 [1.062 +/- .002]	6.9
1.75mm2	1.52 +/- 0.05 [1.060 +/- .002]	7.2
1.50mm2	1.45 +/- 0.05 [1.057 +/- .002]	8.2
1.25mm2	1.39 +/- 0.05 [1.055 +/- .002]	8.7
1.00mm2	1.32 +/- 0.05 [1.052 +/- .002]	9.4

- 1 RECOMMENDED SPARE PARTS
- 2 REFER TO SUPPLIED INSTRUCTION SHEET FOR CLEANING, LUBRICATION AND STORAGE OF APPLICATOR.
- 3 APPLY PART NUMBER 2-23419-6 LOCTITE TO THREADS OF ITEM 242.
- 4 CRIMP HEIGHT REFERENCE SETTING WAS THE SETTING USED WHEN THE APPLICATOR WAS QUALIFIED AT THE FACTORY. ADJUSTMENT MAY BE NECESSARY WHEN RUNNING APPLICATOR IN THE FIELD.
- 5 WIRE SIZES 1.25mm2 AND 1.00mm2 NOT COMPATIBLE WITH TERMINAL P/N 964202.
- 6 TERMINAL FEED NOT COMPATIBLE WITH MECHANICAL FEED.
- 7. UNLESS SPECIFIED OTHERWISE TORQUE VALUES SHALL BE USED PER DOCUMENT, 101-35000.

**\*WARNING**  
 ON INSTALLATION, SET WIRE DISC TO CRIMP HEIGHT REFERENCE SETTING FOR LARGEST WIRE SIZE. CRIMP HEIGHT REFERENCE SETTINGS GREATER THAN THE VALUE SHOWN MAY CAUSE DAMAGE TO THE CRIMP TOOLING, REFER TO THE INSTRUCTION SHEET FOR PROPER SETUP AND ADJUSTMENTS.

LOC	DIST	REV	DATE	BY	APPV
A	66				

REV	DATE	DESCRIPTION	DATE	BY	APPV
-	1	2119082-9			244
-	1	2079764-1			243
3	-	2119083-1			242
-	1	7-18023-7			241
-	1	2844940-1			238
-	REF	994970-2			164
-	1	2119641-2			151
-	1	2168083-8			144
-	4	2168083-9			143
-	1	1-1803583-0			141
-	1	1803516-1			140
-	1	1-18028-2			119
-	1	2844908-1			99
-	1	2844907-1			98
-	1	455888-4			82
-	1	5-547505-2			77
-	1	854769-4			74
-	1	1803607-3			71
-	1	2119740-1			67
-	2	2168078-1			66
-	1	5-18022-5			59
-	1	21028-2			58
-	1	1338685-1			56
-	2	1-2168083-0			53
-	1	5018030-1			52
-	1	811242-5			51
-	1	690753-2			50
-	1	18023-9			49
-	1	1803602-1			41
-	1	1752356-3			34
-	2	2079383-5			33
-	2	2-2844962-6			30
-	1	2844992-1			29
-	1	455888-3			28
-	1	1320928-2			24
-	1	2168083-2			21
-	1	1-18028-2			20
-	1	2119533-1			19
1	-	2119806-1			13
-	1	3-22280-3			12
-	1	1-356885-4			11
-	1	2119805-1			10
-	1	1803095-6			9
1	1	1333207-8			8
-	-	-			7
-	-	-			6
-	1	1-2119780-1			5
-	1	1-238011-7			4
1	1	2-2119582-6			3
-	1	455888-4			2
1	1	456408-2			1

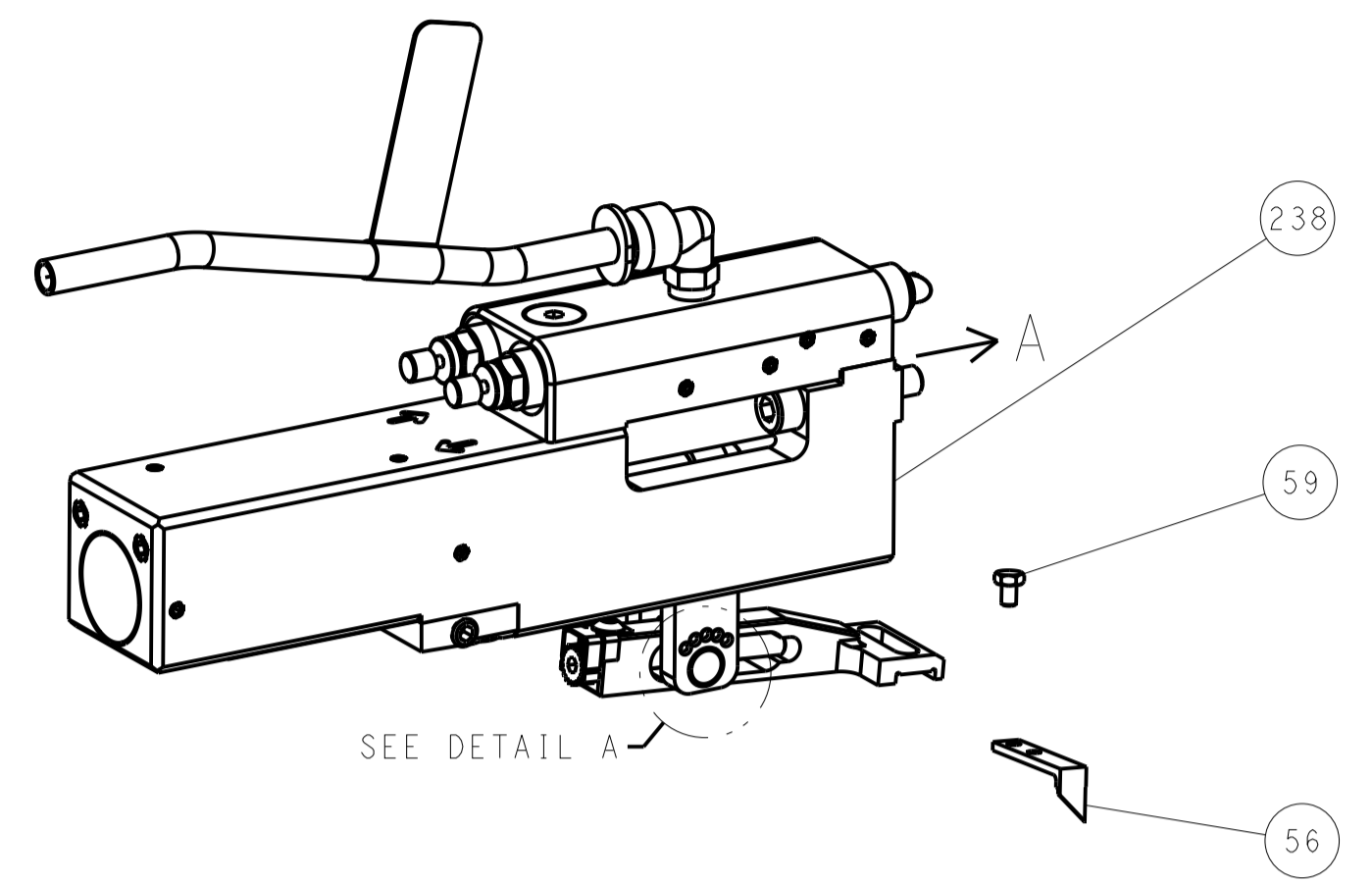
DIMENSIONS:		TOLERANCES UNLESS OTHERWISE SPECIFIED:		MATERIAL:		FINISH:		WEIGHT:		SCALE:	
mm	0 PLC ±	1 PLC ±	2 PLC ±	3 PLC ±	4 PLC ±	ANGLES					
CUSTOMER DRAWING		SCALE 1:2		SHEET 3 OF 4		REV C					

PACIFIC VERSION  
 Shown on sheets 3 of 4 & 4 of 4  
 (Atlantic version shown on sheets 1 of 4 & 2 of 4)

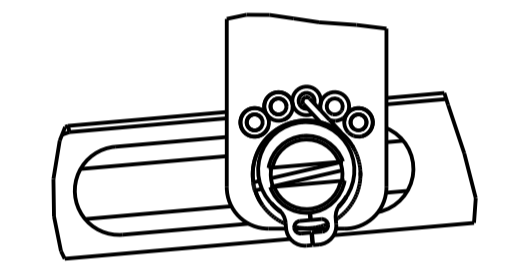
LOC		DIST		REVISIONS			
A	66	P	LTM	DESCRIPTION	DATE	DWN	APVD
		-	-	SEE SHEET 1	-	-	-

# FEED TYPE

## PNEUMATIC

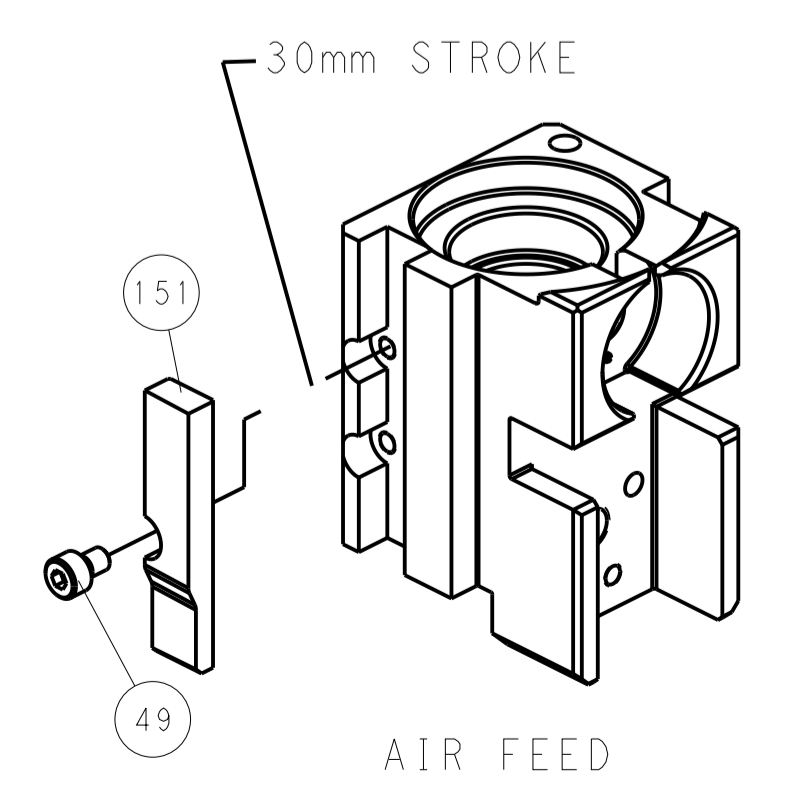


## FEED SPRING SETTING POSITION (SHOWN FROM REAR SIDE)

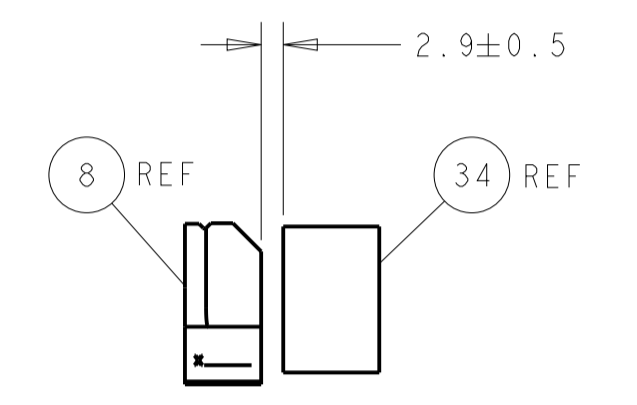
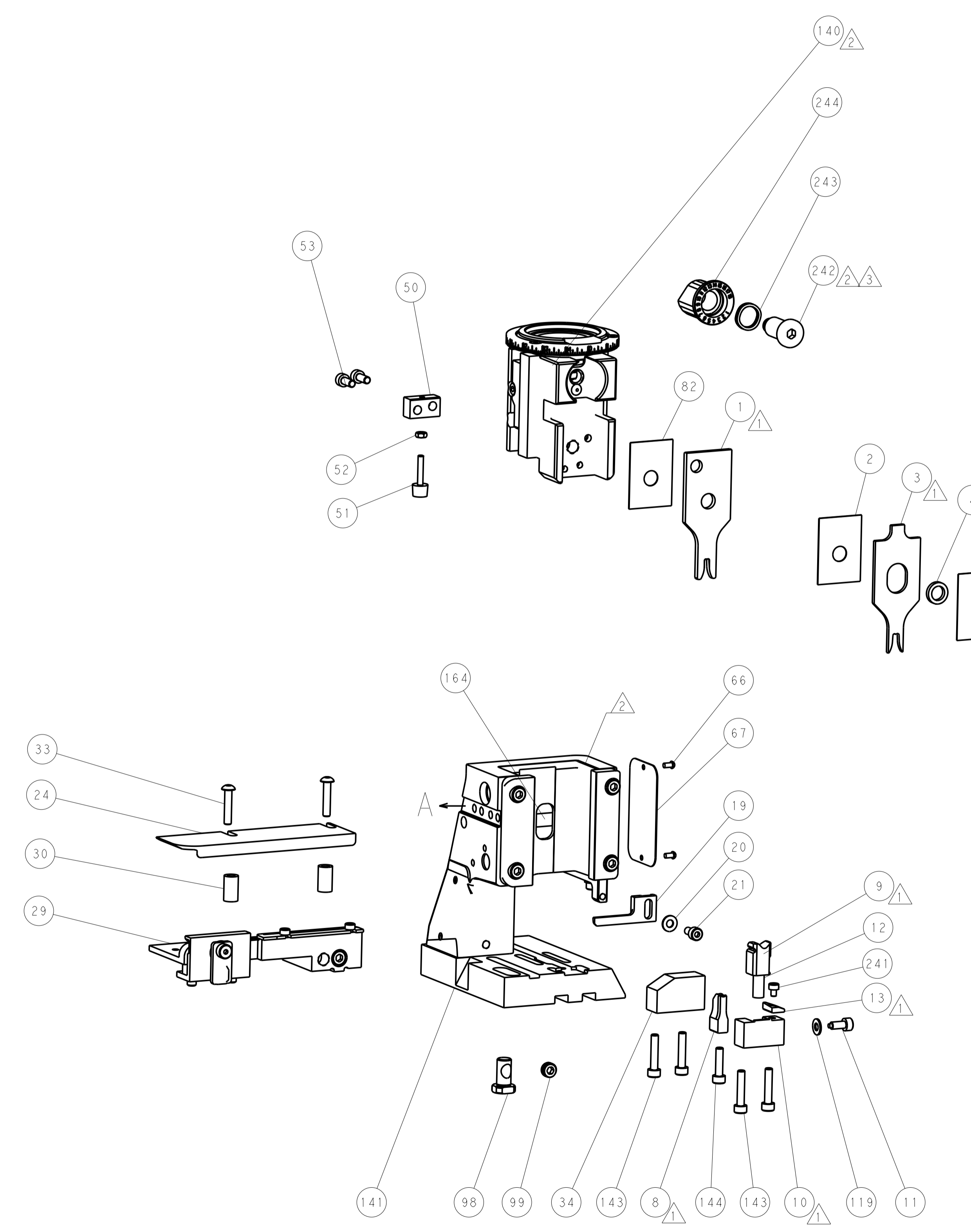


DETAIL A

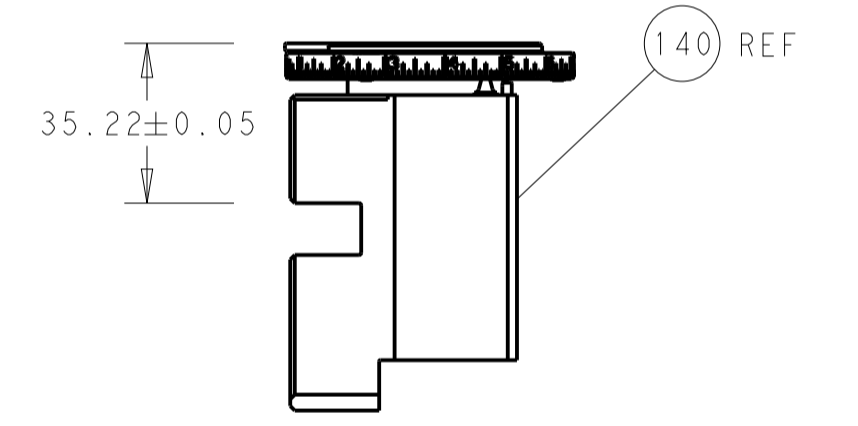
## CAM POSITION



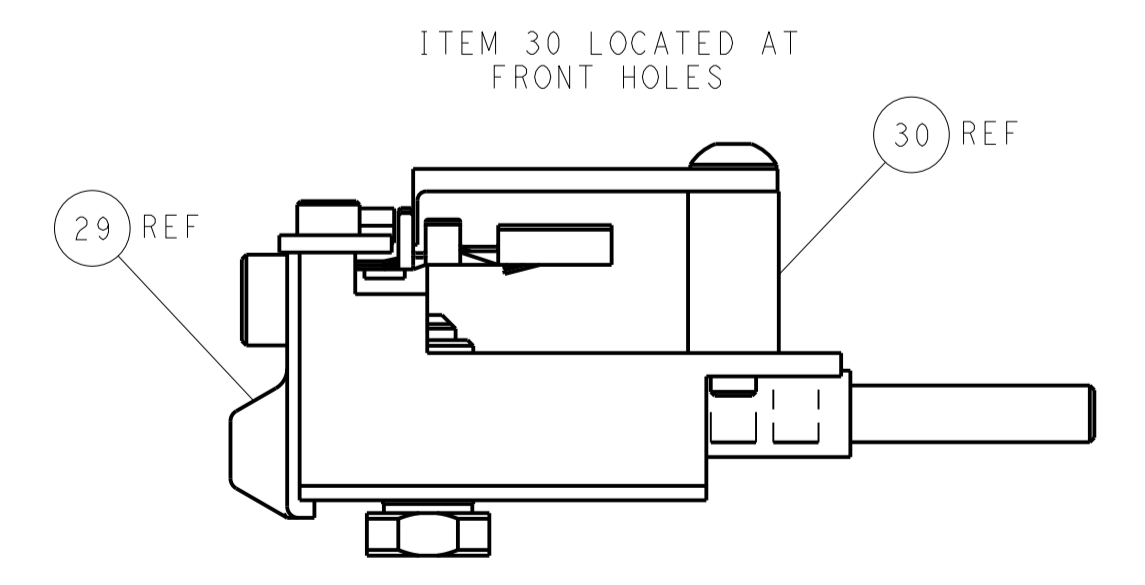
AIR FEED



TERMINAL SUPPORT LOCATION



RAM SET-UP



FEED TRACK POSITION  
GUIDE BY INSULATION BARREL

**PACIFIC VERSION**  
 Shown on sheets 3 of 4 & 4 of 4  
 (Atlantic version shown on sheets 1 of 4 & 2 of 4)

DIMENSIONS:		TOLERANCES UNLESS OTHERWISE SPECIFIED:		DWN L. ZHANG 05SEP2012		TE Connectivity Harrisburg, PA 17105-3608	
mm	0 PLC ±	1 PLC ±	2 PLC ±	3 PLC ±	4 PLC ±	NAME Ocean Side Feed Applicator	
MATERIAL:		FINISH:		APVD S. XI 05SEP2012		RESTRICTED TO	
				PRODUCT SPEC		SIZE CAGE CODE DRAWING NO	
				APPLICATION SPEC		A1 00779 C=2151245	
				WEIGHT		SCALE 1:2 SHEET 4 OF 4 REV C	
				CUSTOMER DRAWING			