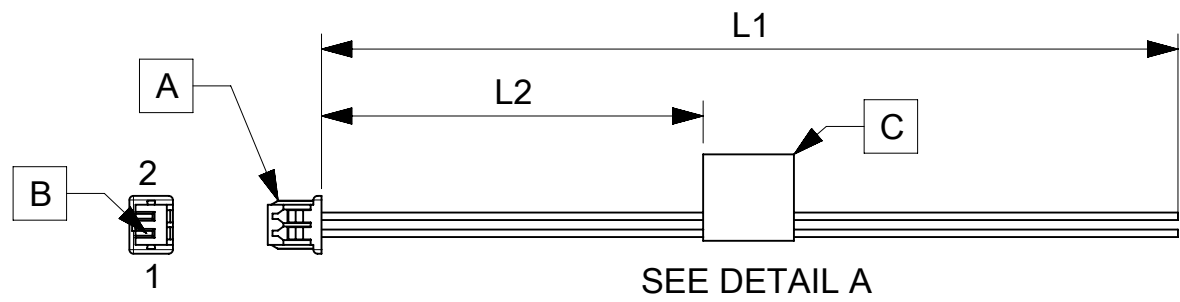


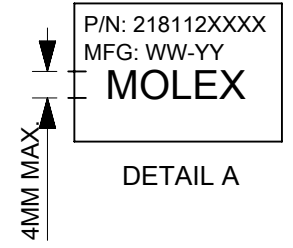
ITEM	PART#	DESCRIPTION	QTY	UOM
A	510210200	PicoBlade1.25 Rec Hsg 2P	1	PC
B	500588000	PicoBlade1.25 Crimp Rec Term Chain Tin	2	PC
C	--	Blank label 12.7x35.5mm (WHT:12.7mm) HF	1	PC

FROM	TO	DESCRIPTION	COLOR
A1	--	CABLE 28 AWG UL 1061 BLACK	BLACK
A2	--	CABLE 28 AWG UL 1061 BLACK	BLACK



SEE DETAIL A

TABLE			
PART NUMBER	L1	L2 (REF)	TITLE
2181120200	75±5	30	2 CIRCUIT PICOBLADE R:BLUNT CABLE 75MM
2181120201	150±6	70	2 CIRCUIT PICOBLADE R:BLUNT CABLE 150MM
2181120202	225±6	105	2 CIRCUIT PICOBLADE R:BLUNT CABLE 225MM
2181120203	300±8	145	2 CIRCUIT PICOBLADE R:BLUNT CABLE 300MM
2181120204	425±8	205	2 CIRCUIT PICOBLADE R:BLUNT CABLE 425MM



- NOTES
1. Connector view shown is from mating side.
 2. Free ends must be blunt cut.
 3. Label text must be 2mm max. in height with Arial font.
 4. Label must be wrapped in flag type on the cables.

REVISION			
DATE	REV	DESCRIPTION	CHANGER
04/03/2021	A	INITIAL RELEASE	ARAJU

DOCUMENT STATUS	P1	RELEASE DATE	2021/03/26	04:03:43
-----------------	----	--------------	------------	----------

FUNCTIONAL SYMBOLS $\frac{E}{A} = 0$ $\frac{E}{E} = 0$ $\frac{E}{P} = 0$ DIVISIONAL SYMBOLS	THIS DRAWING CONTAINS INFORMATION THAT IS PROPRIETARY TO MOLEX ELECTRONIC TECHNOLOGIES, LLC AND SHOULD NOT BE USED WITHOUT WRITTEN PERMISSION		molex SEE TABLE		
	DIMENSION UNITS	SCALE			
	GENERAL TOLERANCES (UNLESS SPECIFIED)				
	ANGULAR TOL	± °			
	4 PLACES	±			
3 PLACES	±	DOCUMENT NUMBER: 2181120200 DOC TYPE: PSD DOC PART: 000 REVISION: A			
2 PLACES	±	DRAFT WHERE APPLICABLE MUST REMAIN WITHIN DIMENSIONS THIRD ANGLE PROJECTION DRAWING: A4-SIZE SERIES: 218112 MATERIAL NUMBER: SEE TABLE CUSTOMER: GENERAL MARKET SHEET NUMBER: 1 OF 1			
1 PLACE	±				
0 PLACES	±				