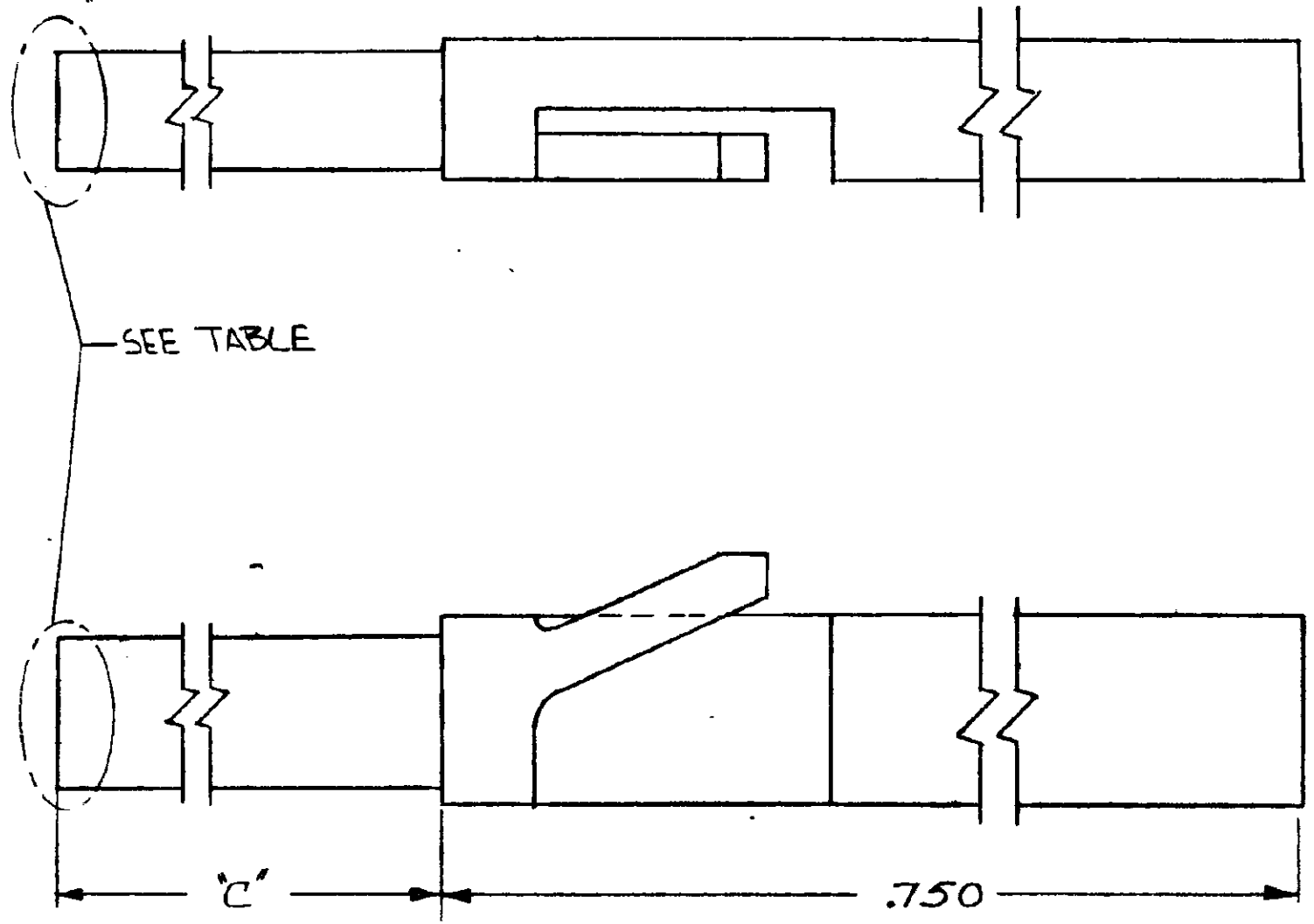


DRAWING MADE IN AMERICAN PROJECTION

© 1972 BY AMP INCORPORATED. ALL RIGHTS RESERVED. AMP PRODUCTS COVERED BY PATENTS AND/OR PATENTS PENDING.

| REVISIONS | | | | |
|-----------|-----|---------------------------------|----------|----------|
| ZONE | LTR | DESCRIPTION | DATE | APPROVED |
| | 3 | RELEASED WAC 5-2-83 | 5-2-83 | JH |
| | 01 | ADDED - 3 & NOTE #1 PER ECN #14 | 9-12-72 | JH |
| | 02 | ADDED TIP DETAIL PER ECN 422 | 1-8-74 | SLW |
| | A | REV LOC 4 DIST AD-4171 | 11-21-89 | BF |
| | B | REV PER 0010-1103-43 | 3-15-99 | EB |



④ TIP DETAIL D

⑤ 1. RECOMMENDED HOLE SIZE IN P.C. BOARD FOR PLUG "C" END $.125^{+.004}_{-.002}$

| | | | |
|----------|--------------|----------|---------|
| OBSOLETE | SEE DETAIL D | .312 | 87116-3 |
| | AS SHOWN | .050 | 87116-2 |
| OBSOLETE | SEE DETAIL D | .650 | 87116-1 |
| | REMARKS | 'C' DIM. | PART NO |

| | | | |
|---|-----------------------------|--|-------------------------|
| UNLESS OTHERWISE SPECIFIED DIMENSIONS ARE IN INCHES TOLERANCES ON: DECIMALS ± .01 ANGLES ± .5° | CONTRACT NO. | AMP INCORPORATED HARRISBURG, PENNSYLVANIA | |
| | DR. <i>4-18-72</i> | AMP | |
| MATERIAL NYLON COLOR: NATURAL | CHK. <i>S. Hende 6/9/72</i> | NAME KEYING PLUG, MODI. | |
| | APPD. <i>Mark 6/14/72</i> | SIZE B | CODE IDENT NO. 00779 |
| | REL. <i>S. Hende 6-9-72</i> | NUMBER 87116 | SHEET |
| | DSGN APPD. | SCALE 1:1 | |
| | OTHER APPD. | | |