

REFERENCE SPECIFICATIONS

-NFC 93425 (in compliance with HE 501)

PHYSICAL CHARACTERISTICS

-INSULATOR MATERIAL: THERMOPLASTIC UL94V0
 -CONTACT MATERIAL: BRASS
 GOLD OVER NICKEL

-ACCESSORIES: BRASS,cadmium plated yellow passivation
 -SHELLS: STEEL,cadmium plated yellow passivation

ELECTRICAL CHARACTERISTICS

-NOMINAL CURRENT: 7.5A
 -CONTACT RESISTANCE: <= 7.3 m ohms
 -CONTACT/CONTACT : >=1000 V
 -CONTACT/GROUND : >=1200 V
 -INSULATION RESISTANCE: >=5000 MOhms

ENVIRONMENTAL CHARACTERISTICS

- CLIMATIC CATEGORY: 55/125/56
 TEMPERATURE RANGE -55°C TO +125°C
 DAMP HEAT STEADY STATE 56 DAYS
 SALT SPRAY 48 HOURS

MECHANICAL CHARACTERISTICS

- RETENTION AGAINST TORQUE: - Threaded insert: 0.7 N.m minimum
 - Female screw : 0.5 N.m minimum

DBML25P300

Series

Shell size: **E A B C D**
 see sheet 2

Front accessory definition
 see sheet 2

- Blank** :without accessory
- F** :floating mounting
- L** :threaded insert M3
- O** :threaded insert UNC 4-40
- V** :female screw UNC 4-40
- S** :spacer

Contact number (see sheet 2)
9,15,25,37,50

Contacts

P :Pin

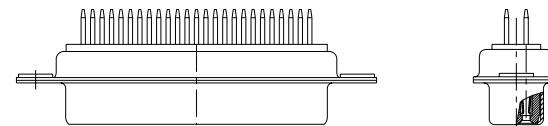
Termination type

3 :Straight version

Plating

00 : 500 matings/unmatings

43 : 500 matings/unmatings for harsh environment



25 WAY for Example

rev	ecn no	dr	date
A	LS06-0174	MPE	2006/11/14
B	LS07-0273	MPE	2007/10/30
-	-	-	-
-	-	-	-
-	-	-	-
-	-	-	-

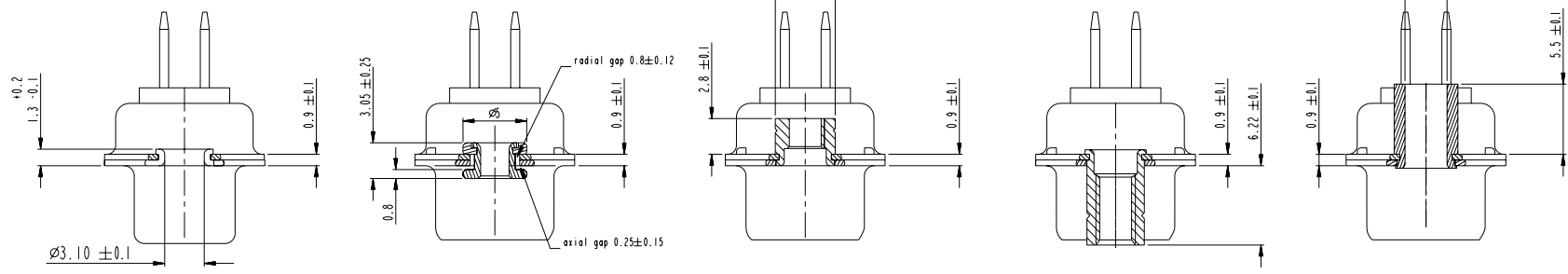
www.fciconnect.com		surface	tolerance std	projection	mm
		ISO 1302	ISO 406 ISO 1101	⊕	←→
		TOLERANCES UNLESS OTHERWISE SPECIFIED			
Dr	M PESSON	2006/11/14	ANGULAR	0.X ±0.3	size A2 Scale 2:1
Eng	P LEGARE	2006/11/14	LINEAR	0.xx ±0.1	
Chr	P LEGARE	2006/11/14	0° ±2'	0.xxx ±0.05	ECN LS07-0273
Appr	P LEGARE	2006/11/14	Product family	- Spec.ref	
SUB MALE DM HE501 series with straight solder contact		cat no	C01-8637-1738	Rev.	B
catalog no		CUSTOMER	sheet 1 of 4		

Copyright FCJ

1 2 3 4 5 6 7 8

A
B
C
D
E
F

A
B
C
D
E
F



FRONT ACCESSORY **Blank** without **F** floating mounting **L** insert M3 **O** insert UNC 4.40 **V** female screw UNC 4.40 **S** spacer

PART NUMBER	FRONT ACCESSORY
D*MxxP300	without
D*MFxxP300	floating mounting
D*MLxxP300	insert M3
D*MOxxP300	insert UNC 4.40
D*MVxxP300	female screw UNC 4.40
D*MSxxP300	spacer

shell size	Contact number
‡	XX
E	09
A	15
B	25
C	37
D	50

PART NUMBER	FRONT ACCESSORY
D*MxxP343	without
D*MFxxP343	floating mounting
D*MLxxP343	insert M3
D*MOxxP343	insert UNC 4.40
D*MVxxP343	female screw UNC 4.40
D*MSxxP343	spacer

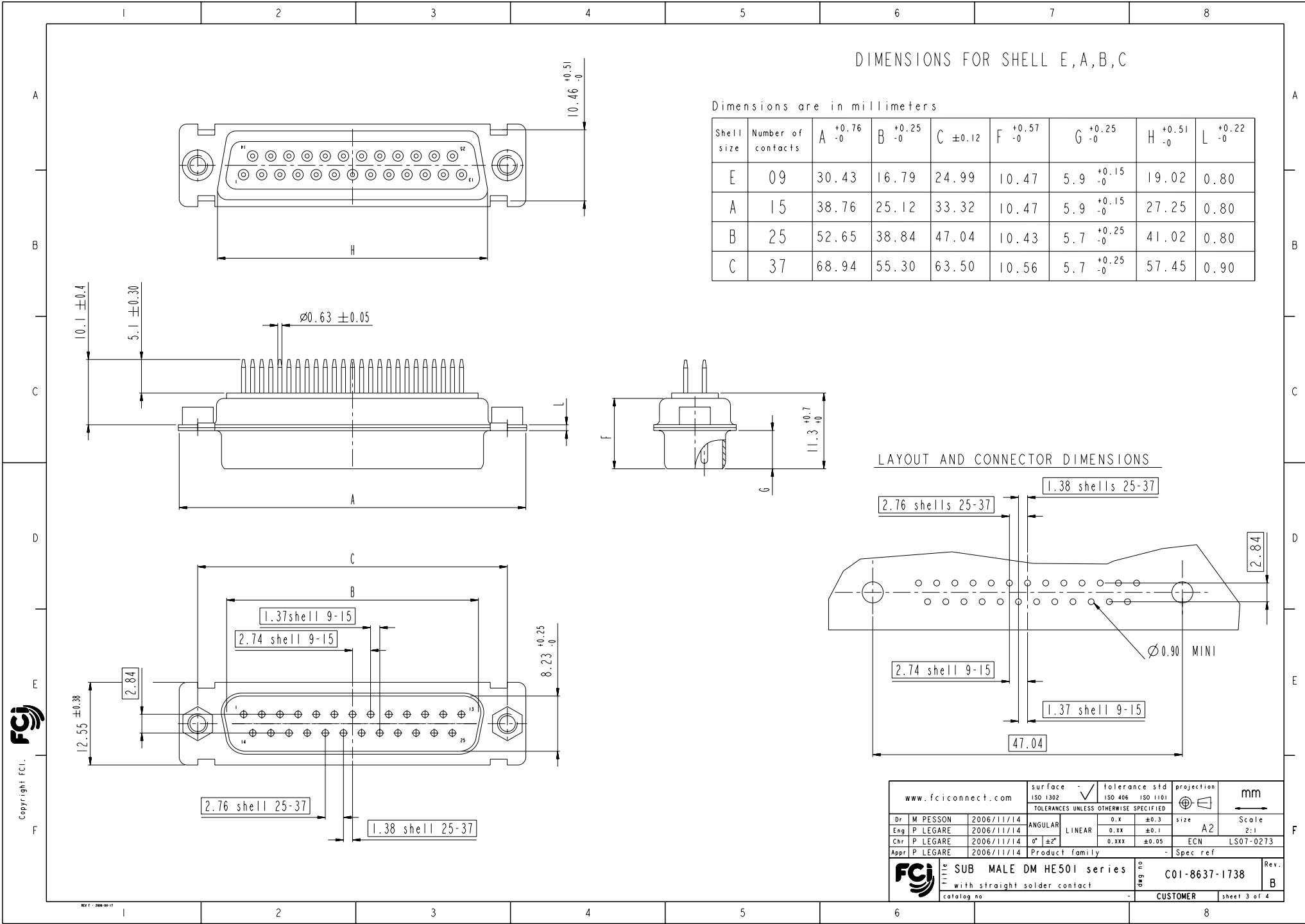
CROSS REFERENCES HE501 and FCI

HE501 P/N	FCI P/N	FRONT ACCESSORY
HE501NxxYP4	D*MxxP300	without
HE501FxxYP4	D*MFxxP300	floating mounting

Copyright FCI.

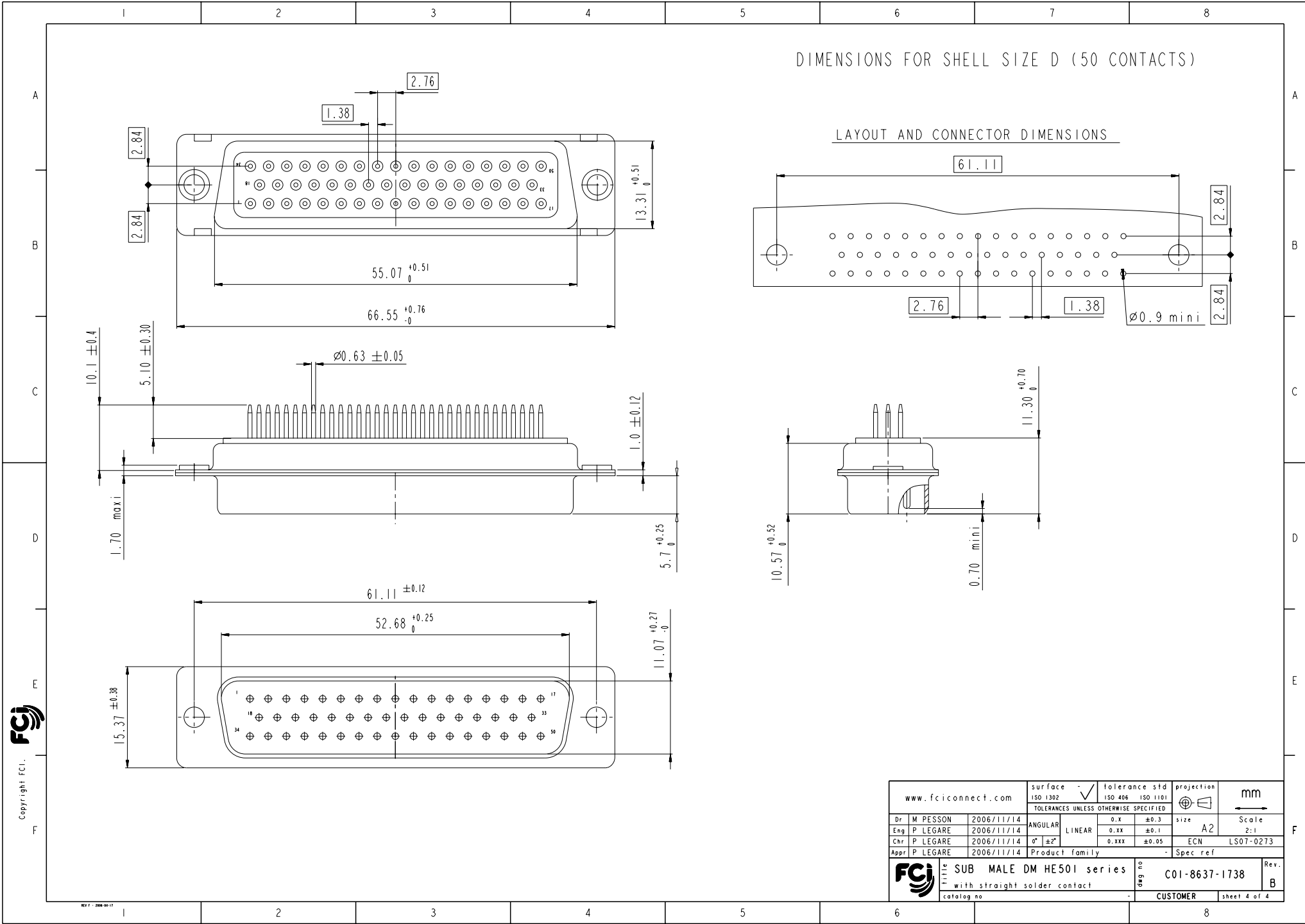
SCALE: 4

www.fciconnect.com		surface ISO 1302	tolerance std ISO 406 ISO 1101	projection mm
		TOLERANCES UNLESS OTHERWISE SPECIFIED		
Dr	M PESSON	2006/11/14	ANGULAR	0.X ±0.3
Eng	P LEGARE	2006/11/14	LINEAR	0.XX ±0.1
Chr	P LEGARE	2006/11/14	0° ±2°	0.XXX ±0.05
Appr	P LEGARE	2006/11/14	Product family	Spec ref
		SUB MALE DM HE501 series		Rev. B
		with straight solder contact		ang no C01-8637-1738
		catalog no		CUSTOMER sheet 2 of 4



Copyright FCI
FCI

www.fciconnect.com		surface ISO 1302	tolerance std ISO 406 ISO 1101	projection mm
		TOLERANCES UNLESS OTHERWISE SPECIFIED		
Dr M PESSON	2006/11/14	ANGULAR	0.X ±0.3	size A2 Scale 2:1
Eng P LEGARE	2006/11/14	LINEAR	0.XX ±0.1	ECN LS07-0273
Chr P LEGARE	2006/11/14	0° ±2°	0.XXX ±0.05	Product family - Spec ref
Appr P LEGARE	2006/11/14			
FCI SUB MALE DM HE501 series with straight solder contact		cat no	C01-8637-1738	Rev. B
catalog no		CUSTOMER		sheet 3 of 4



Copyright FCJ

www.fciconnect.com		surface	ISO 1302	tolerance std	ISO 406	ISO 1101	projection	mm
		TOLERANCES UNLESS OTHERWISE SPECIFIED						
Dr	M PESSON	2006/11/14	ANGULAR	0.X	± 0.3	size	A2	Scale
Eng	P LEGARE	2006/11/14	LINEAR	0.xx	± 0.1			2:1
Chr	P LEGARE	2006/11/14	\varnothing ± 2	0.xxx	± 0.05	ECN	LS07-0273	
Appr	P LEGARE	2006/11/14	Product family			Spec ref		
		SUB MALE DM HE501 series			ang no	C01-8637-1738		Rev.
		with straight solder contact						B
catalog no		CUSTOMER		sheet 4 of 4				