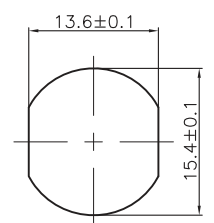
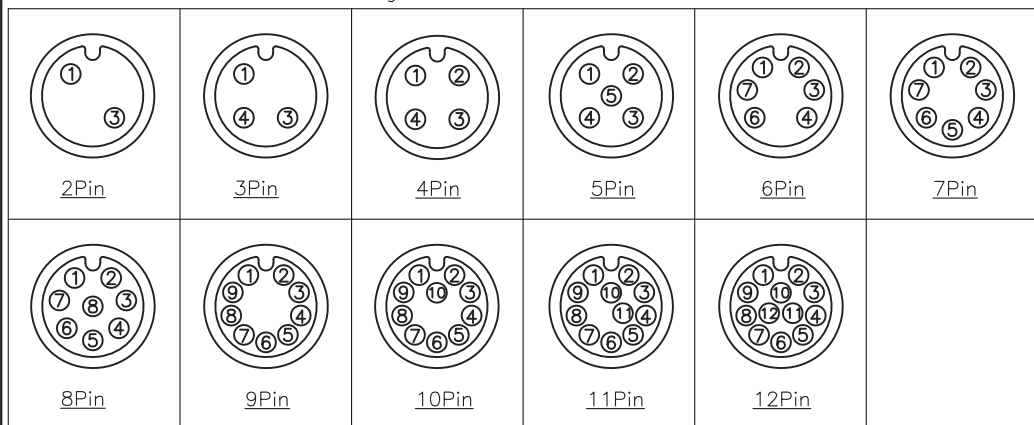


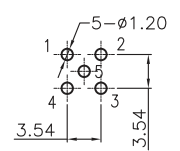
Specifications:
 Current Rating: 4A(2~5P); 2A(6~8P); 1.5A(9~12P) AC/DC
 Voltage Rating: 250V(2~4P); 60V(5P); 30V(6~12P) AC/DC
 Contact Resistance: 5m ohm. Max.
 Insulation Resistance: 100M ohm. Min.
 Withstanding Voltage: 500V AC/Minute
 Waterproof rate: IP67
 Operating Temperature Range: -40°C ~ +100°C
 Material and Finish
 See Table
 How to Order
 M12-XXS-FA-PBX



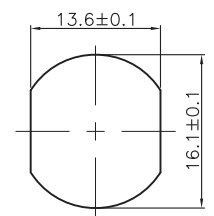
Pin Assignments Front View



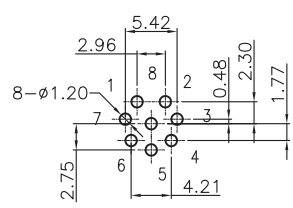
PG9 Recommended Panel CUT-Out
 Thickness: 4.0mm



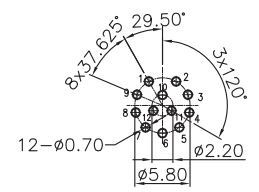
2~5P Recommended PCB Layout
 TOL: ±0.05mm



M16 Recommended Panel CUT-Out
 Thickness: 4.0mm



6~8P Recommended PCB Layout
 TOL: ±0.05mm



9~12P Recommended PCB Layout
 Tolerance: ±0.05mm

ITEM	Description	Material	Remark	Q'TY
1	Insulator	Nylon	UL94V-0 Black	1
2	Terminal	Copper Alloy	Gold Plated 1u"	2~12
3	Shell	Zinc Alloy	Nickel Plated 60u"	1
4	Seal ring	Silicone	Red	2
5	Nut	Copper Alloy	PG9 or M16 Nickel Plated 60u"	1

F				DRAWN: JOY	GENERAL TOLERANCE: .X=±0.2 .XX=±0.15 .XXX=±0.10
E					
D				CHECKED: ANDREW	UNIT: MM SCALE: 1:1
C					
B				APPROVAL: JOY	SHEET: 1/1
A	27-MAR-2021				
REV	DATE	FILE	BY	BILL	PROJECTION:



ON-SHORE TECHNOLOGY, INC.

DESCRIPTION:
 M12 A CODE SOCKET STRAIGHT DIP TYPE
 PART NO:
 M12-XXS-FA-PBX