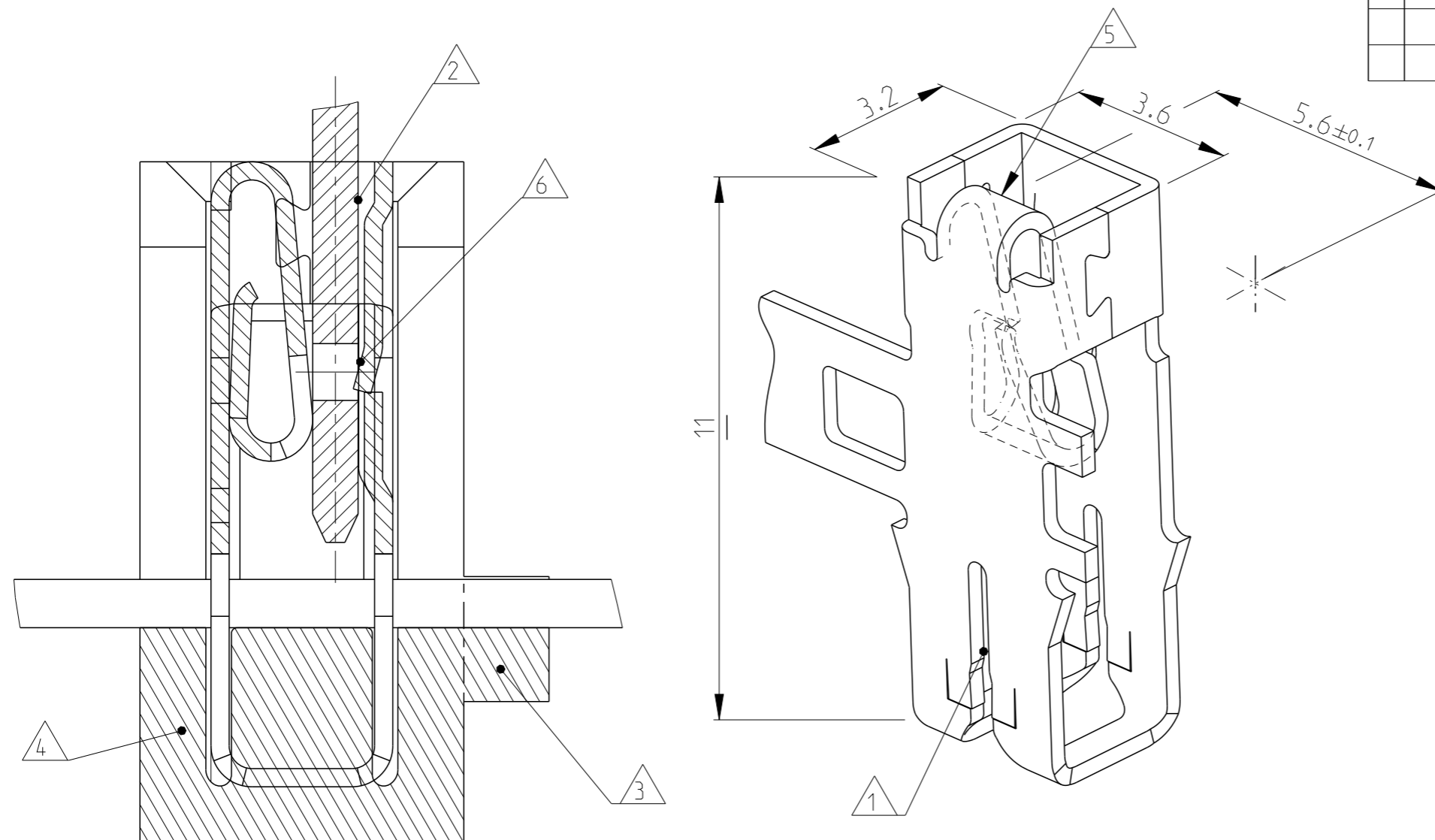


REVISIONS

P	LTR	DESCRIPTION	DATE	DWN	APVD
	A3	PN 1-964106-1 OBSOLETE	07OCT14	PKS	RRP



- △1 Kontakt geeignet fuer:
Lackdraht Ø0.6-0.80mm
(Einzeldraht oder zwei Draehte gleichen Durchmessers)
Slot accepts:
SINGLE MAGNET WIRE Ø0.6-0.80mm
DOUBLE MAGNET WIRE SAME DIAMETERS
- △2 Flachstecker A2.8-0.5mm oder A2.8-0.8mm nach DIN 46244
FLAT PIN A2.8-0.5mm OR A2.8-0.8mm ACCORDING TO DIN 46244
- △3 Bereich wird beim Kontaktieren abgetrennt
AREA WILL BE CUTTED OF BY TERMINATION
- △4 Kontakt Kammer nach Zeichnung 411-18514
CAVITY ACCORDING DWG 411-18514
- △5 Kennziffer fuer Lackdrahtbereich (12)
IDENTIFICATION NO. (12)
- △6 Unter Vorstrich-Zahl 1-... auch "ohne" Rastnase lieferbar
UNDER PRAEFIX NO: 1- ALSO "WITHOUT LOCKING NOSE AVAILABEL

1-964106-2	△6	A	-	MAG-MATE Kontakt "without"	CuNiSi	POSTTINNED
1-964106-1	△6	A	-	MAG-MATE Kontakt "without"	CuNiSi	PRETINNED
964106-2		A	-	MAG-MATE Kontakt "with"	CuNiSi	POSTTINNED
964106-1		A	-	MAG-MATE Kontakt "with"	CuNiSi	PRETINNED
COSTUMER PART NO		REV	PCS	DESCRIPTION	MATERIAL	SURFACE COLOR

THIS DRAWING IS A CONTROLLED DOCUMENT.

DIMENSIONS:	TOLERANCES UNLESS OTHERWISE SPECIFIED:
mm	±0.2mm
0 PLC	±
1 PLC	±
2 PLC	±
3 PLC	±
4 PLC	±
ANGLES	±1°
MATERIAL	FINISH
SEE TABLE	SEE TABLE

DWN	A.Holch	10-02-92
CHK	H.PL	10-02-92
APVD	-	-
PRODUCT SPEC	-	-
APPLICATION SPEC	-	-
WEIGHT	-	-
Customer Drawing		



NAME			
MAG-MATE TERMINAL WITH TAB-RECEPT. 2.8-0.5/0.8			
SIZE	CAGE CODE	DRAWING NO	RESTRICTED TO
A3	00779	964106	-
SCALE	SHEET	OF	REV
10:1	1	1	A3