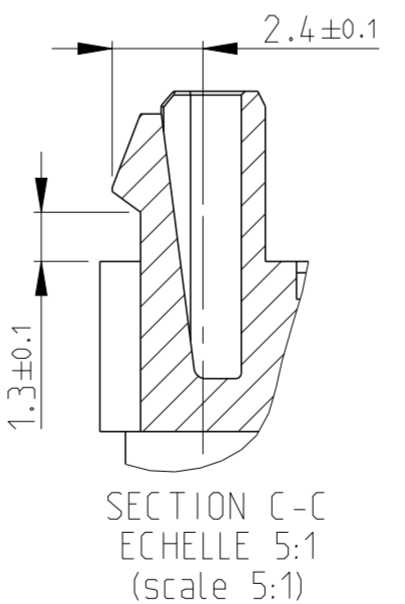
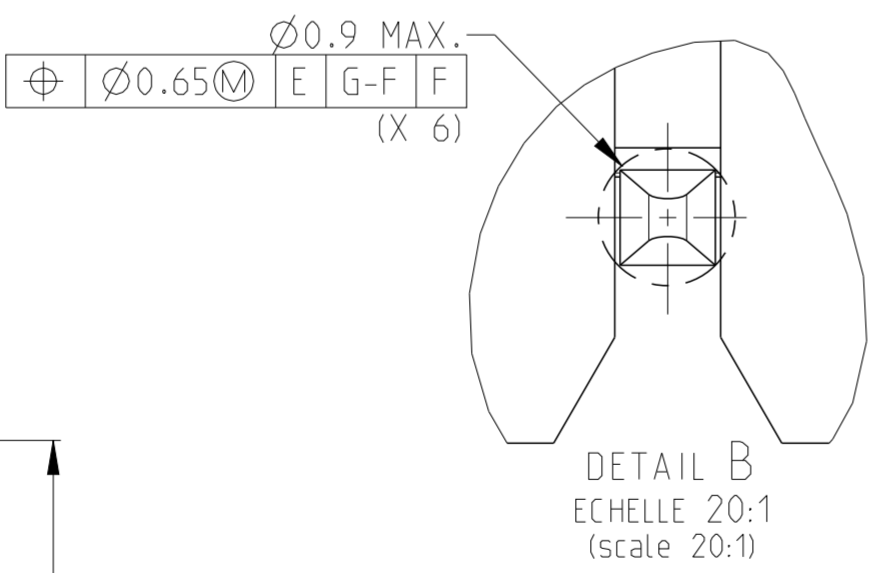
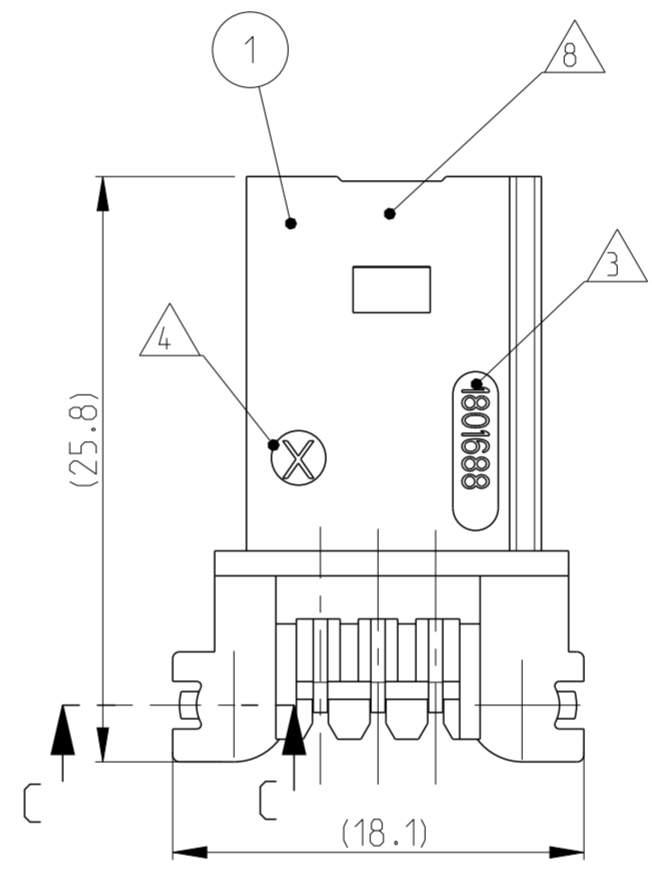
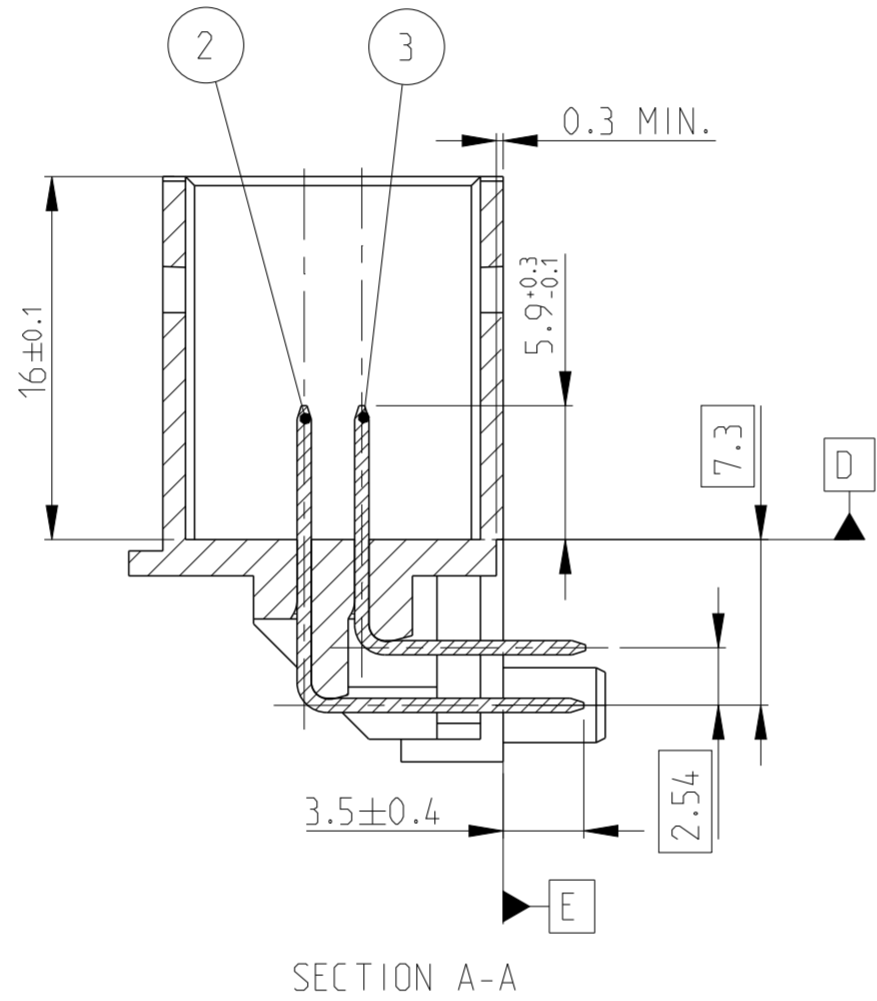
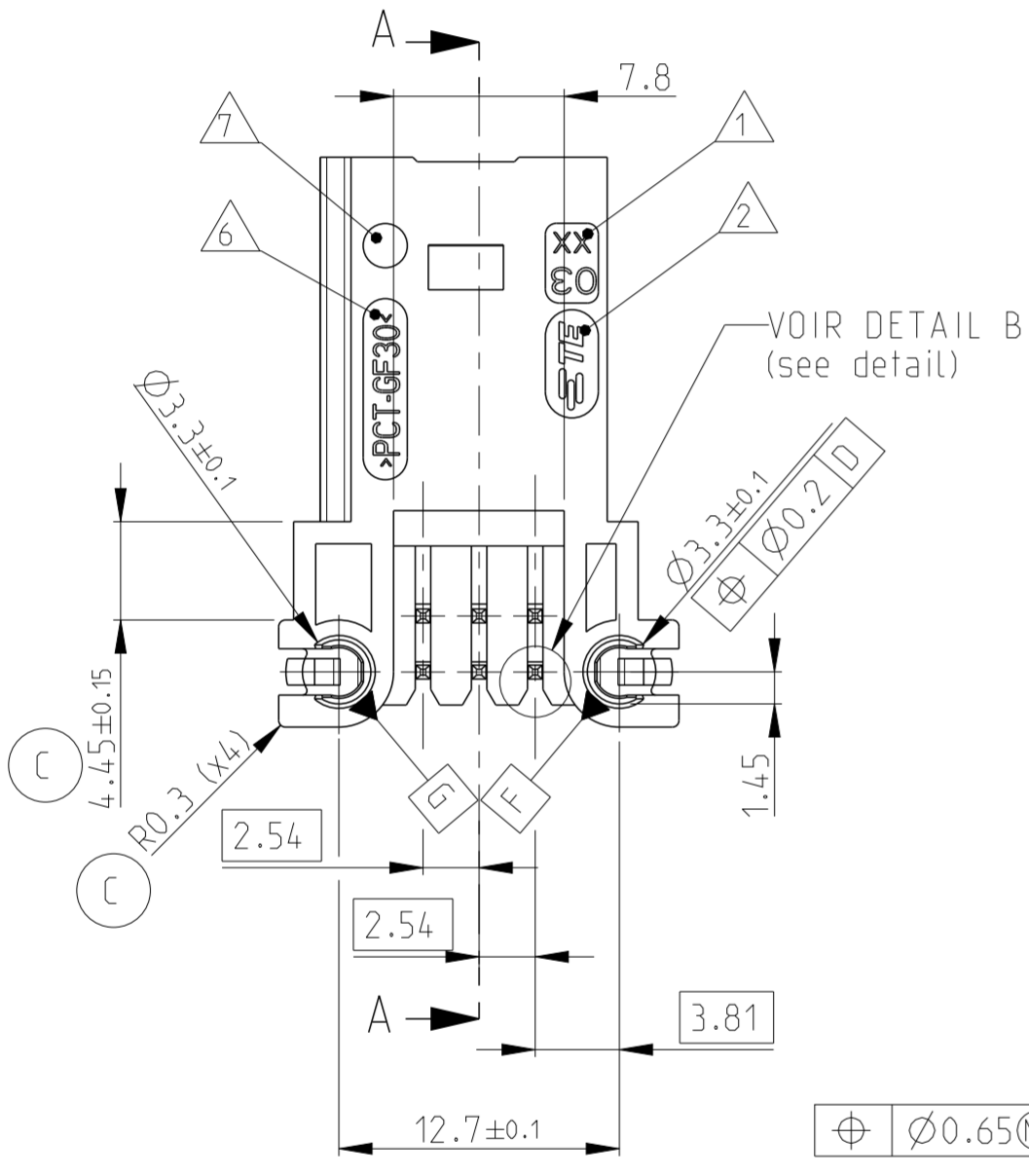
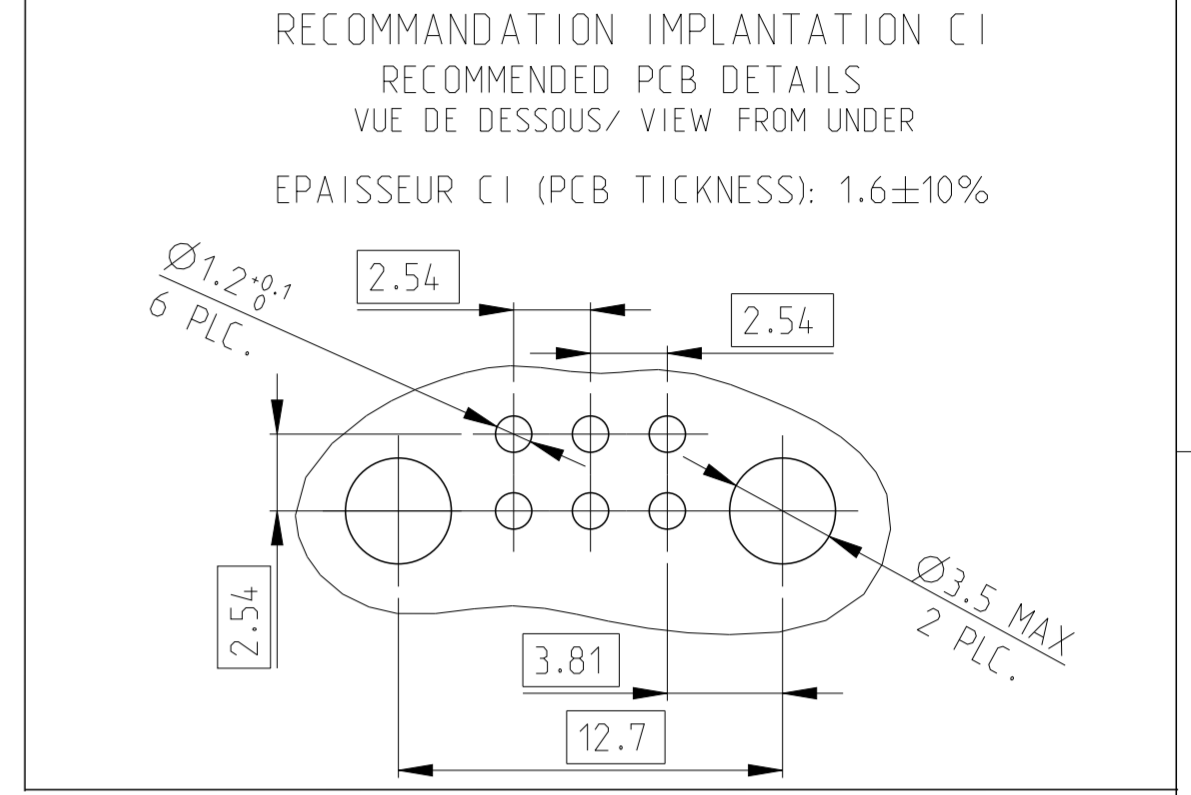
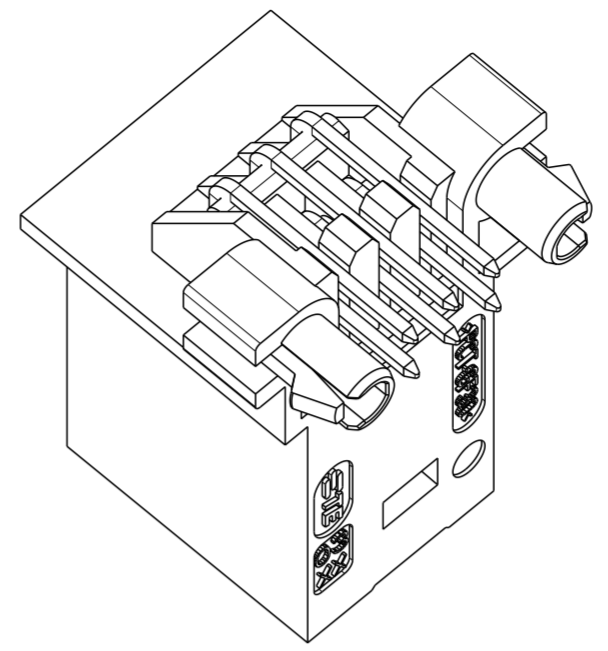
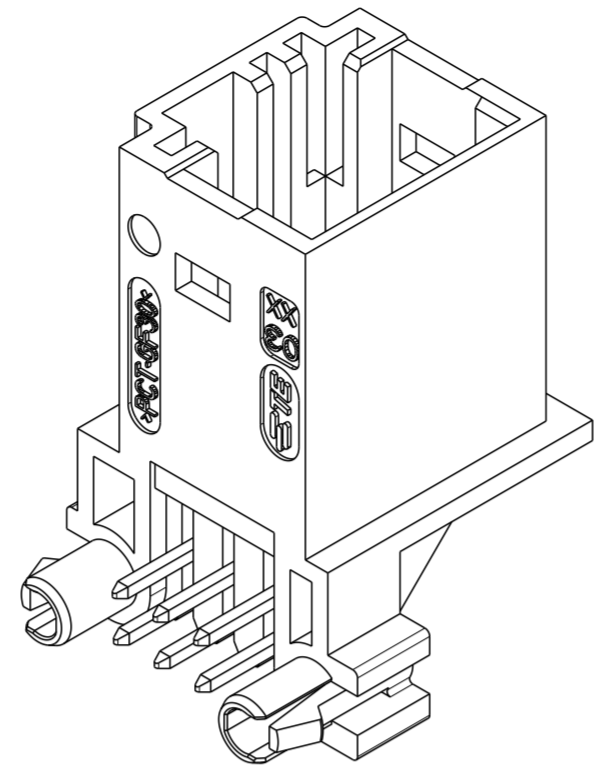
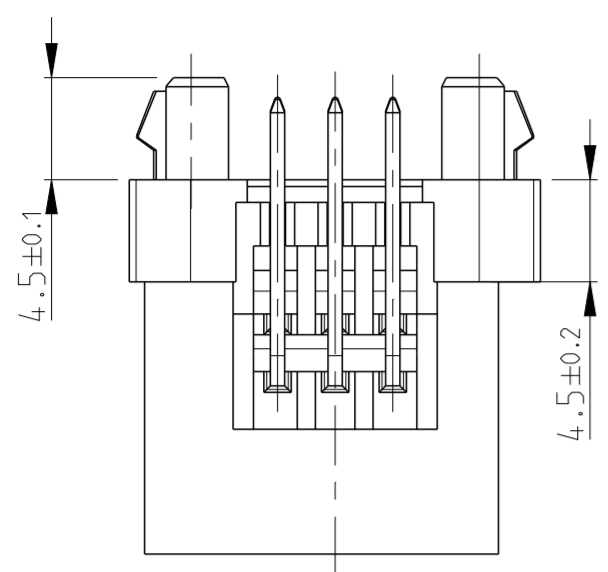


THIS DRAWING IS UNPUBLISHED. RELEASED FOR PUBLICATION 20
 © COPYRIGHT 20 ALL RIGHTS RESERVED.

LOC		DIST		REVISIONS			
P	LTR	DESCRIPTION	DATE	DWN	APVD		
	C	BOARDLOCK MODIFICATION	03FEB2015	AD	JL		



1801688-1 as shown

NOTES:

- 1: DATE PRODUCTION BOITIER PLASTIQUE. (Production date of plastic part).
- 2: LOGO "TE".
- 3: REFERENCE DU PRODUIT (part number).
- 4: NUMERO D'EMPREINTE MOULE BOITIER. (mold cavity identification number).
- 5: REPERE ALVEOLE (cavity marking).
- 6: IDENTIFICATION DE LA MATIERE. (material identification).
- 7: INDICE REVISION DE LA PIECE (part status revision).
- 8: DATE D'ASSEMBLAGE (Assembly date code).
- 9: EN ACCORD AVEC LA SPEC D'INTERFACE TE: 208-15575. (according to TE interface spec).
- 10: DIMENSIONS QUALIFIEES SUIVANT SPEC TE:109-201 TEST CONDITION B. (dimensions qualified according TE spec 109-201 condition B).

REFERENCE (assy p/n)	1801688-1				
3	CuSn6	BROCHE MQS COURTE (short pin MQS contact)	ETAME (tinned)	3	
3	CuSn6	BROCHE MQS LONGUE (long pin MQS contact)	ETAME (tinned)	2	
1	PCT 30%GF	BOITIER (housing)	MARRON (brown)	1	
	MATIERE (material)	DESIGNATION (description)	FINITION (finish)	REP (item)	

THIS DRAWING IS A CONTROLLED DOCUMENT.

DWN: A.DUPUIS 03FEV2011
 CHK: J.LALANGE 03FEV2011
 APVD: J.JREVIL 03FEV2011

TE Connectivity

EMBASE 6 VOIES COUDEE MQS AVEC BOARD LOCKS
 HEADER, RIGHT ANGLE, 6W, MQS

SIZE: A2 CAGE CODE: 00779 DRAWING NO: C-1801688 RESTRICTED TO: -

SCALE: 3:1 SHEET: 1 OF 1 REV: C

Customer Drawing