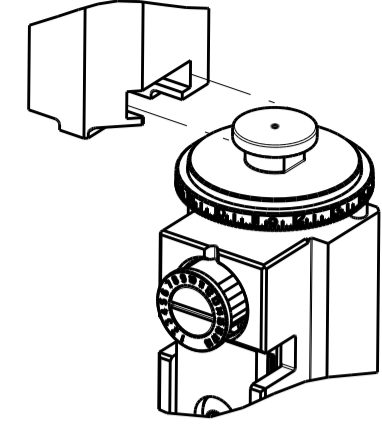


| PART NUMBER | REVISION | DESCRIPTION | FEED TYPE |
|-------------|----------|----------------------------------|------------|
| 2266731-1 | C | FINE CRIMP HEIGHT ADJUST | MECHANICAL |
| 2266731-2 | C | FINE CRIMP HEIGHT ADJUST | PNEUMATIC |
| 7-2266731-1 | C | MECHANICAL AND CRIMP TOOLING KIT | MECHANICAL |
| 7-2266731-2 | C | PNEUMATIC AND CRIMP TOOLING KIT | PNEUMATIC |
| 7-2266731-7 | A | CRIMP TOOLING KIT | - |

ATLANTIC VERSION TERMINATOR INTERFACE ADAPTER



| APPLICATOR DATA | | |
|-----------------|----------------|------|
| CRIMP | SIZE | TYPE |
| WIRE | 3.68 mm [.145] | F |
| INSUL | 3.68 mm [.145] | O |

APPLICATOR INSTRUCTIONS
408-35042

| TERMINAL DATA: TE TERMINAL | | TE CRIMP SPECIFICATION | |
|--------------------------------------|-------------|---------------------------|-------------|
| TERMINAL NAME: 2.8mm BLADE, UNSEALED | | | |
| WIRE STRIP LENGTH | | INSULATION DIAMETER RANGE | |
| 4.63-5.39 mm [.182-.212 IN] | | ∅ | 5 |
| TERMINAL APPLICATION SPECIFICATION | 114-13013 | | |
| TERMINALS APPLIED | | | |
| TE TERMINAL | TE TERMINAL | TE TERMINAL | TE TERMINAL |
| 1326029-8 | | | |

| WIRE SIZE | CRIMP HEIGHT mm [INCH] | CRIMP HEIGHT REFERENCE SETTING |
|-----------|----------------------------|--------------------------------|
| 10 AWG | 2.10+/-0.05 [.083+/- .002] | 7.7 |
| 4.00mm2 | 1.90+/-0.05 [.075+/- .002] | 9.6 |
| 12 AWG | 1.75+/-0.05 [.069+/- .002] | 11.1 |

- 1. RECOMMENDED SPARE PARTS
- 2. REFER TO SUPPLIED INSTRUCTION SHEET FOR CLEANING, LUBRICATION AND STORAGE OF APPLICATOR.
- 3. APPLY PART NUMBER 2-23419-6 LOCTITE TO THREADS OF ITEM 242.
- 4. CRIMP HEIGHT REFERENCE SETTING WAS THE SETTING USED WHEN THE APPLICATOR WAS QUALIFIED AT THE FACTORY. ADJUSTMENT MAY BE NECESSARY WHEN RUNNING APPLICATOR IN THE FIELD.
- 5. INSULATION DIAMETER RANGE:
 - 12 AWG 3.10-3.30 mm
 - 4.00 mm2 3.34-3.50 mm
 - 10 AWG 3.84-4.04 mm
- 6. UNLESS SPECIFIED OTHERWISE TORQUE VALUES SHALL BE USED PER DOCUMENT, 101-35000.

***WARNING**
ON INSTALLATION, SET WIRE DISC TO CRIMP HEIGHT REFERENCE SETTING FOR LARGEST WIRE SIZE. CRIMP HEIGHT REFERENCE SETTINGS GREATER THAN THE VALUE SHOWN MAY CAUSE DAMAGE TO THE CRIMP TOOLING, REFER TO THE INSTRUCTION SHEET FOR PROPER SETUP AND ADJUSTMENTS.

ATLANTIC VERSION
Shown on sheets 1 of 4 & 2 of 4
(Pacific version shown on sheets 3 of 4 & 4 of 4)

| LOC | DIST | REVISIONS | | | | | |
|-----|------|-----------|-----|---------------|-----------|-----|------|
| A | 66 | P | LTN | DESCRIPTION | DATE | OWN | APVD |
| | | B | | ECR-15-018507 | 21DEC2015 | MR | GB |
| | | C | | ECR-19-017244 | 06NOV2019 | FZ | TE |

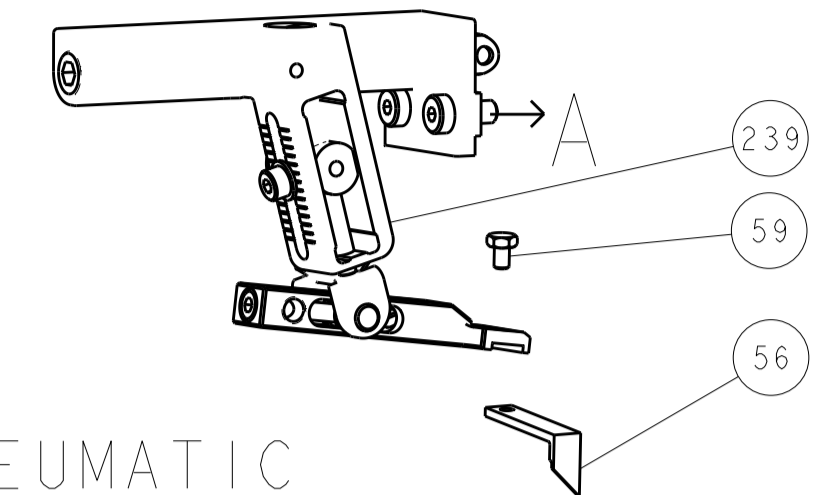
| | | | | | | | | |
|---|-----|-----|-----|-----|-------------|-------------------------------------|-----------------------|---------|
| - | 1 | - | 1 | - | 2119641-1 | FEED CAM, AIR FEED | 248 | |
| - | 1 | 1 | 1 | 1 | 2119082-4 | CAM, SNAIL, INSULATION ADJUSTMENT | 244 | |
| - | 1 | 1 | 1 | 1 | 2079764-1 | WASHER, WAVE SPRING, CREST-TO-CREST | 243 | |
| - | 1 | 1 | 1 | 1 | 2119083-1 | RETAINER, INSULATION DIAL | 242 | |
| - | 1 | 1 | 1 | 1 | 7-18023-7 | SCR, SKT HD CAP M3 X 4.0 | 241 | |
| - | - | - | - | - | 2119580-1 | MECHANICAL FEED ASSEMBLY | 239 | |
| - | 1 | - | 1 | - | 2844940-1 | AIR FEED MODULE | 238 | |
| - | REF | REF | REF | REF | 994970-2 | COUNTER, MAGNETIC | 164 | |
| - | 1 | 1 | 1 | 1 | 1-22281-8 | SPRING, COMPRESSION | 121 | |
| - | 1 | 1 | 1 | 1 | 2844908-1 | SCREW, LOCKING | 99 | |
| - | 1 | 1 | 1 | 1 | 2844907-1 | POST, LOCKING | 98 | |
| - | 1 | 1 | 1 | 1 | 1-690438-0 | FRONT STRIP GUIDE | 96 | |
| - | 2 | 2 | 2 | 2 | 2168083-1 | SCR, SKT HD CAP, RoHS, M3 X 8.0 | 95 | |
| - | 1 | 1 | 1 | 1 | 2168083-6 | SCR, SKT HD CAP, RoHS, M5 X 65 | 93 | |
| - | 1 | 1 | 1 | 1 | 455888-5 | SPACER, CRIMPER | 82 | |
| - | 1 | 1 | 1 | 1 | 22278-8 | SPRING, COMPRESSION | 77 | |
| - | 1 | 1 | 1 | 1 | 854769-4 | HOLDER, INS | 74 | |
| - | 1 | 1 | 1 | 1 | 1803607-3 | DOCUMENTATION PACKAGE | 71 | |
| - | 1 | 1 | 1 | 1 | 2119740-1 | TAG, IDENTIFICATION | 67 | |
| - | 2 | 2 | 2 | 2 | 2168078-1 | SCREW, DRIVE, RH, RoHS, 2 x .188 | 66 | |
| - | 2 | 2 | 2 | 2 | 2-18032-5 | SCR, SET, FLT PNT, M5 X 20.0 | 61 | |
| - | 1 | 1 | 1 | 1 | 2168083-2 | SCR, SKT HD CAP, RoHS, M4 X 8.0 | 60 | |
| - | 1 | 1 | 1 | 1 | 5-18022-5 | SCR, HEX HD CAP, M4 X 6.0 | 59 | |
| - | 1 | 1 | 1 | 1 | 21028-2 | PIN, SLOTTED SPRING .062 X .250 | 58 | |
| - | 1 | 1 | 1 | 1 | 1338683-8 | FEED PAWL | 56 | |
| - | 4 | 4 | 4 | 4 | 2168083-3 | SCR, SKT HD CAP, RoHS, M4 X 12.0 | 54 | |
| - | 2 | 2 | 2 | 2 | 1-2168083-0 | SCR, SKT HD CAP, RoHS, M4 X 10 | 53 | |
| - | 1 | 1 | 1 | 1 | 5018030-1 | NUT, HEX, REG, RoHS, M3 | 52 | |
| - | 1 | 1 | 1 | 1 | 811242-5 | BUMPER, HOLD DOWN | 51 | |
| - | 1 | 1 | 1 | 1 | 690753-2 | SPACER, TONKER | 50 | |
| - | 1 | 2 | 1 | 2 | 18023-9 | SCR, SKT HD CAP M4 X 6.0 | 49 | |
| - | - | 1 | - | 1 | 2119652-1 | FEED CAM, PRE FEED | 48 | |
| - | - | 1 | - | 1 | 2119653-1 | FEED CAM, POST FEED | 47 | |
| - | 1 | 1 | 1 | 1 | 1803583-9 | APPLICATOR BASIC ASSEMBLY, SF | 46 | |
| - | 1 | 1 | 1 | 1 | 1803515-1 | RAM ASSEMBLY, SF ATLANTIC | 44 | |
| - | 1 | 1 | 1 | 1 | 1803602-1 | SCR, BHSC, RoHS (M8 X 25) | 41 | |
| - | 1 | 1 | 1 | 1 | 1752356-2 | SUPPORT, TERMINAL | 34 | |
| - | 2 | 2 | 2 | 2 | 2079383-5 | SCR, BHSC, RoHS (M4 X 20) | 33 | |
| - | 2 | 2 | 2 | 2 | 3-2844962-2 | SPACER, CYLINDRICAL, STRIP GUIDE | 30 | |
| - | 1 | 1 | 1 | 1 | 2844938-5 | PLATE, STRIP GUIDE | 29 | |
| - | 1 | 1 | 1 | 1 | 455888-3 | SPACER, CRIMPER | 28 | |
| - | 2 | 2 | 2 | 2 | 22283-1 | SPRING, COMPRESSION | 27 | |
| - | 1 | 1 | 1 | 1 | 356835-1 | LEVER, DRAG RELEASE | 26 | |
| - | 1 | 1 | 1 | 1 | 240792-1 | DRAG, TERMINAL | 25 | |
| - | 1 | 1 | 1 | 1 | 1320928-6 | STRIP GUIDE | 24 | |
| - | 1 | 1 | 1 | 1 | 980371-4 | SCR, SKT HD SHLDR 5.0 DIA X 6.0 | 23 | |
| - | 1 | 1 | 1 | 1 | 2168083-2 | SCR, SKT HD CAP, RoHS, M4 X 8.0 | 21 | |
| - | 2 | 2 | 2 | 2 | 1-18028-2 | WASHER, FLAT, REG M4 | 20 | |
| - | 1 | 1 | 1 | 1 | 2119533-1 | STRIPPER, SIDE FEED | 19 | |
| - | 1 | 1 | 1 | 1 | 2119806-1 | INSERT, SHEAR | 13 | |
| - | 1 | 1 | 1 | 1 | 3-22280-3 | SPRING, COMPRESSION | 12 | |
| - | 1 | 1 | 1 | 1 | 1-356885-4 | STOP, SHEAR | 11 | |
| - | 1 | 1 | 1 | 1 | 2119805-1 | SHEAR HOLDER, FRONT | 10 | |
| - | 1 | 1 | 1 | 1 | 318707-1 | FLOATING SHEAR, FRONT | 9 | |
| - | 1 | 2 | 2 | 1 | 1 | 6-1633928-2 | ANVIL, COMBINATION | 8 |
| - | - | - | - | - | - | - | 7 | |
| - | - | - | - | - | - | - | 6 | |
| - | 1 | 1 | 1 | 1 | 2119780-8 | DEPRESSOR, SHEAR | 5 | |
| - | 1 | 1 | 1 | 1 | 3-238011-5 | BLOCK, CRIMPER SPACER | 4 | |
| - | 1 | 2 | 2 | 1 | 1 | 4-1633966-6 | CRIMPER, INSULATION O | 3 |
| - | 1 | 1 | 1 | 1 | 455888-7 | SPACER, CRIMPER | 2 | |
| - | 1 | 2 | 2 | 1 | 1 | 2-1633609-4 | CRIMPER, WIRE | 1 |
| - | 77 | 72 | 71 | 2 | -1 | PART NO | DESCRIPTION | ITEM NO |

| DIMENSIONS: | | TOLERANCES UNLESS OTHERWISE SPECIFIED: | | OTHERWISE SPECIFIED: | |
|-------------|---------|--|---------|----------------------|---------|
| mm | 0 PLC ± | 1 PLC ± | 2 PLC ± | 3 PLC ± | 4 PLC ± |
| | ANGLES | FINISH | | | |

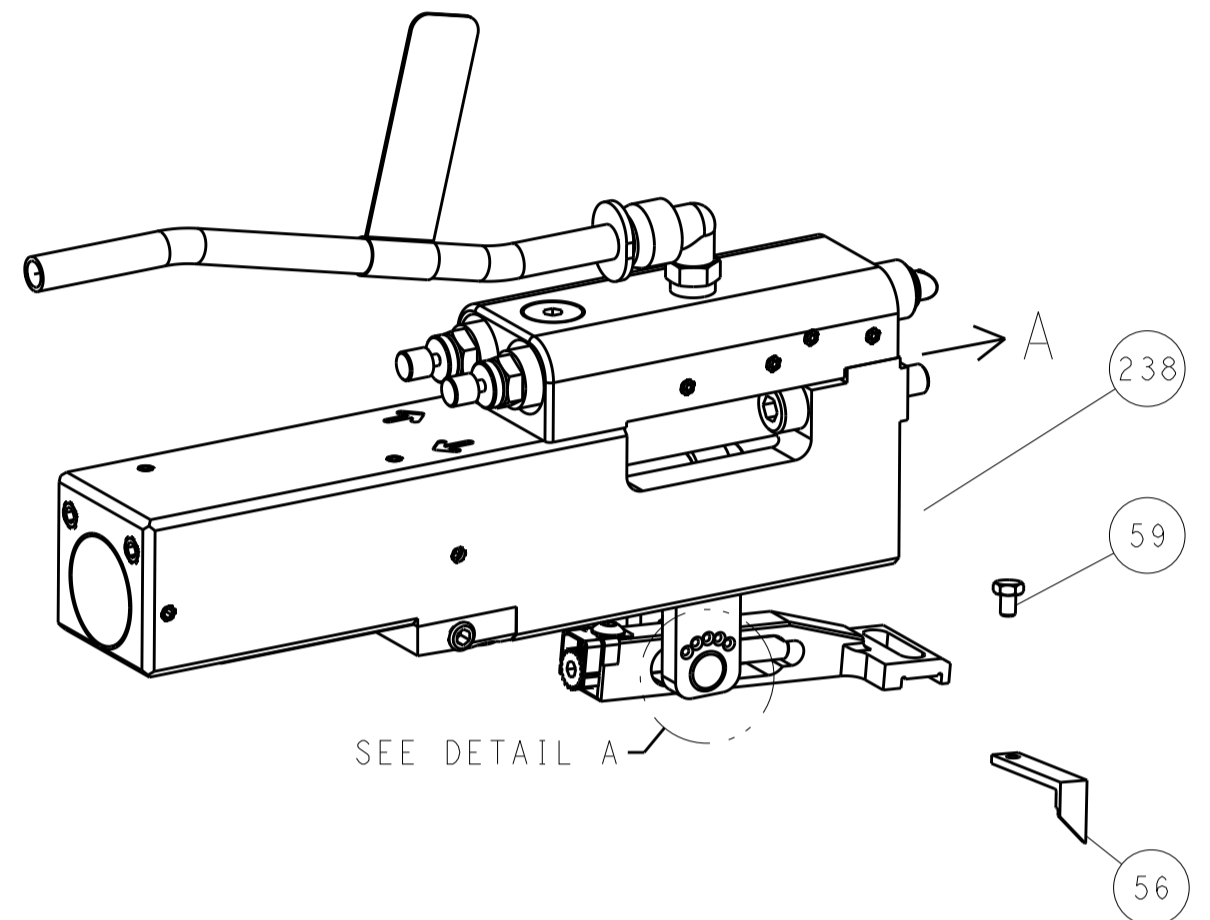
| | | | |
|--|----------|-----------|--|
| OWN | J. HOU | 24MAR2015 | TE Connectivity Harrisburg, PA 17105-3608 |
| CHK | L. ZHANG | 24MAR2015 | |
| APVD | J. GUO | 24MAR2015 | NAME |
| PRODUCT SPEC | | | Ocean Side Feed |
| APPLICATION SPEC | | | Applicator |
| MATERIAL | | WEIGHT | SIZE |
| | | | 00779 |
| Customer Accessible Production Drawing | | | SCALE |
| | | | 1:2 |
| | | | SHEET |
| | | | 1 of 4 |
| | | | REV |
| | | | C |

| LOC | | DIST | | REVISIONS | | | |
|-----|----|------|-----|-------------|------|-----|------|
| A | 66 | P | LTM | DESCRIPTION | DATE | DWN | APVD |
| | | - | - | SEE SHEET 1 | - | - | - |

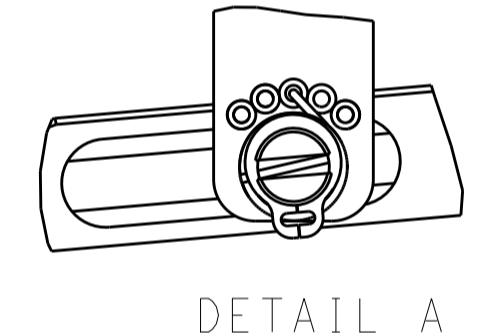
FEED TYPE MECHANICAL



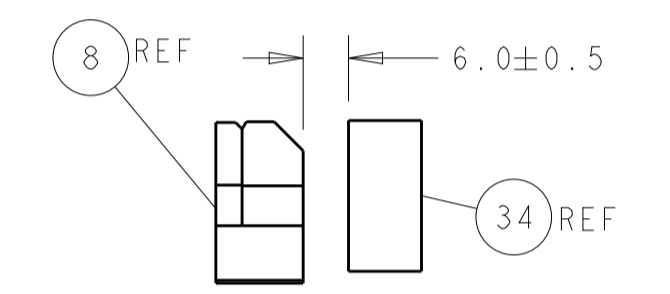
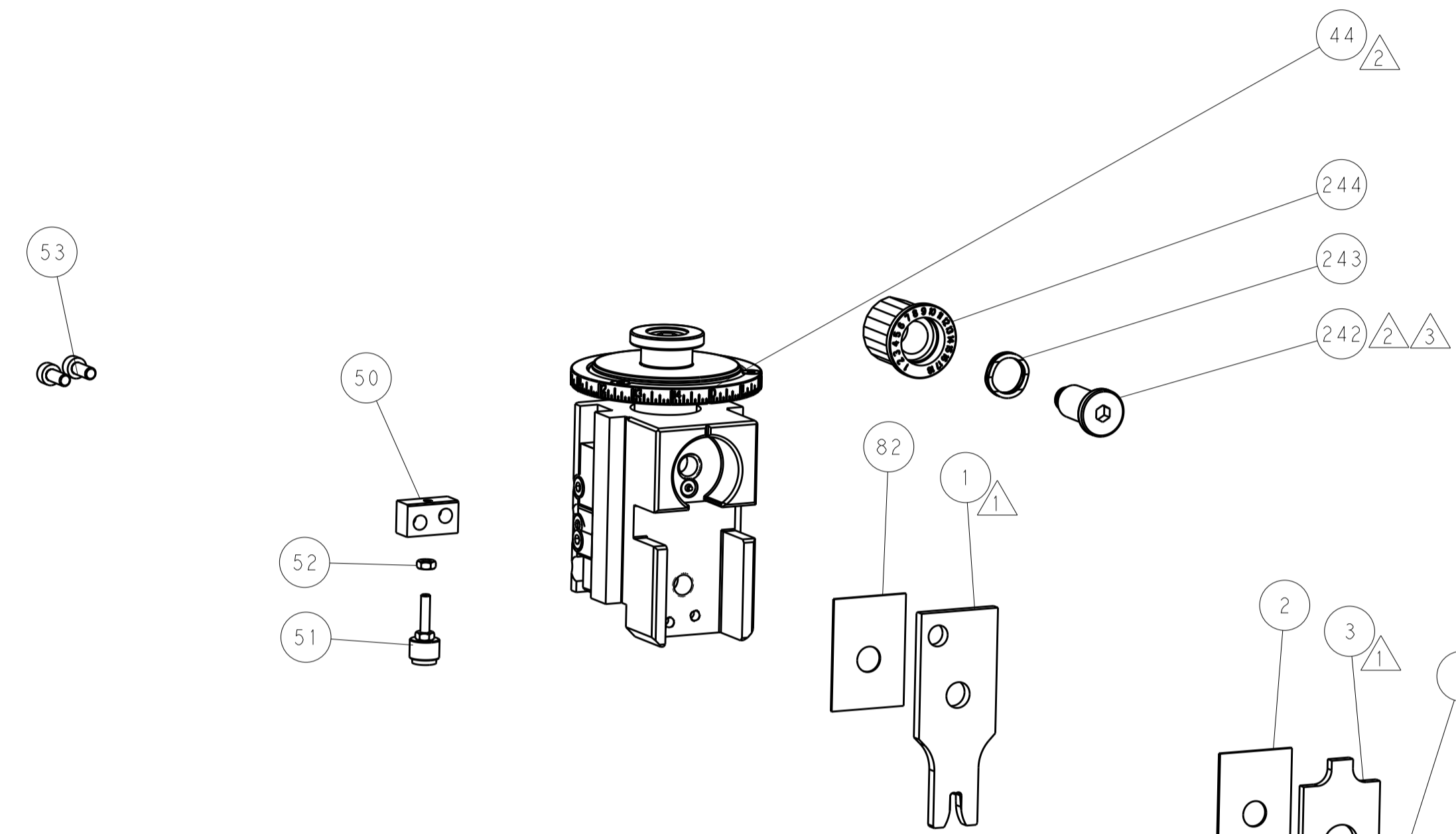
PNEUMATIC



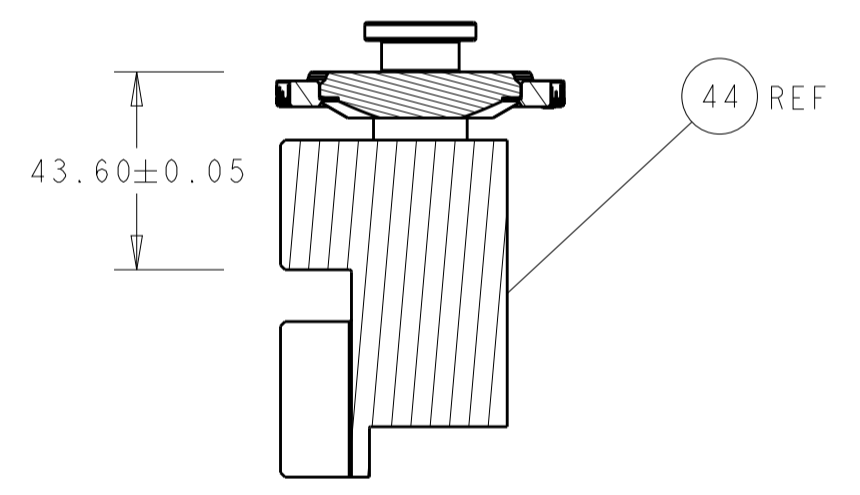
FEED SPRING SETTING POSITION (SHOWN FROM REAR SIDE)



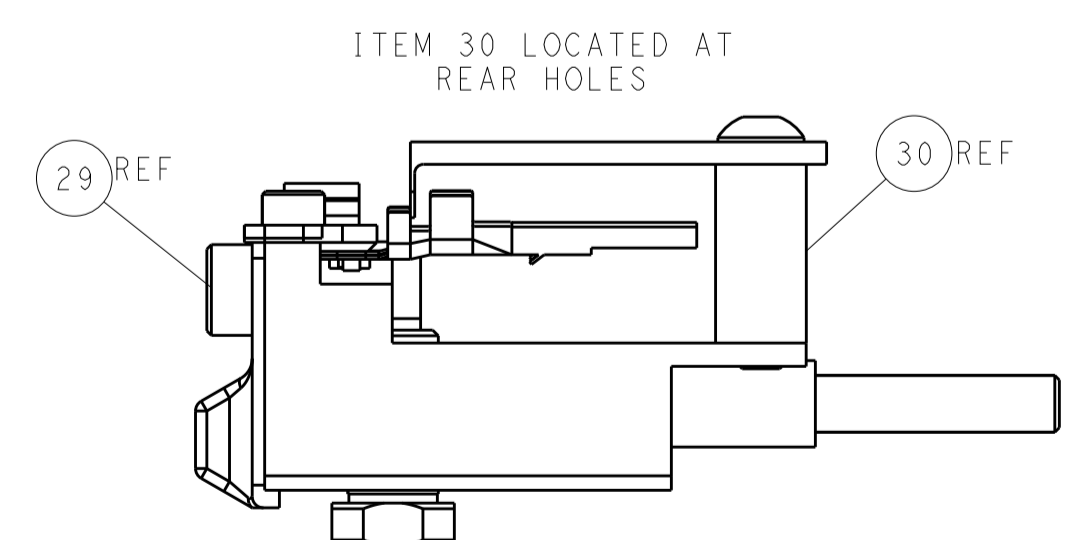
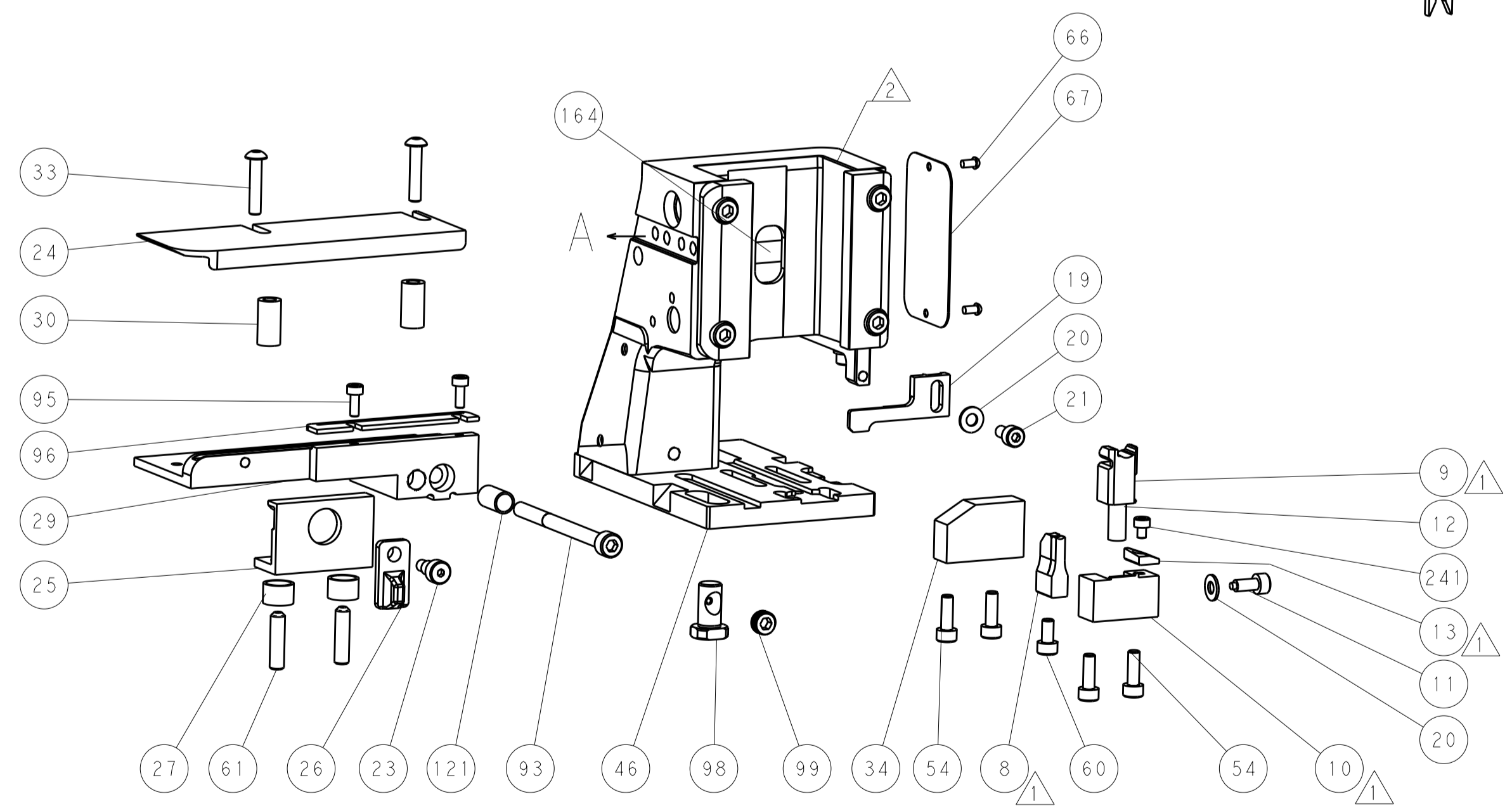
DETAIL A



TERMINAL SUPPORT LOCATION

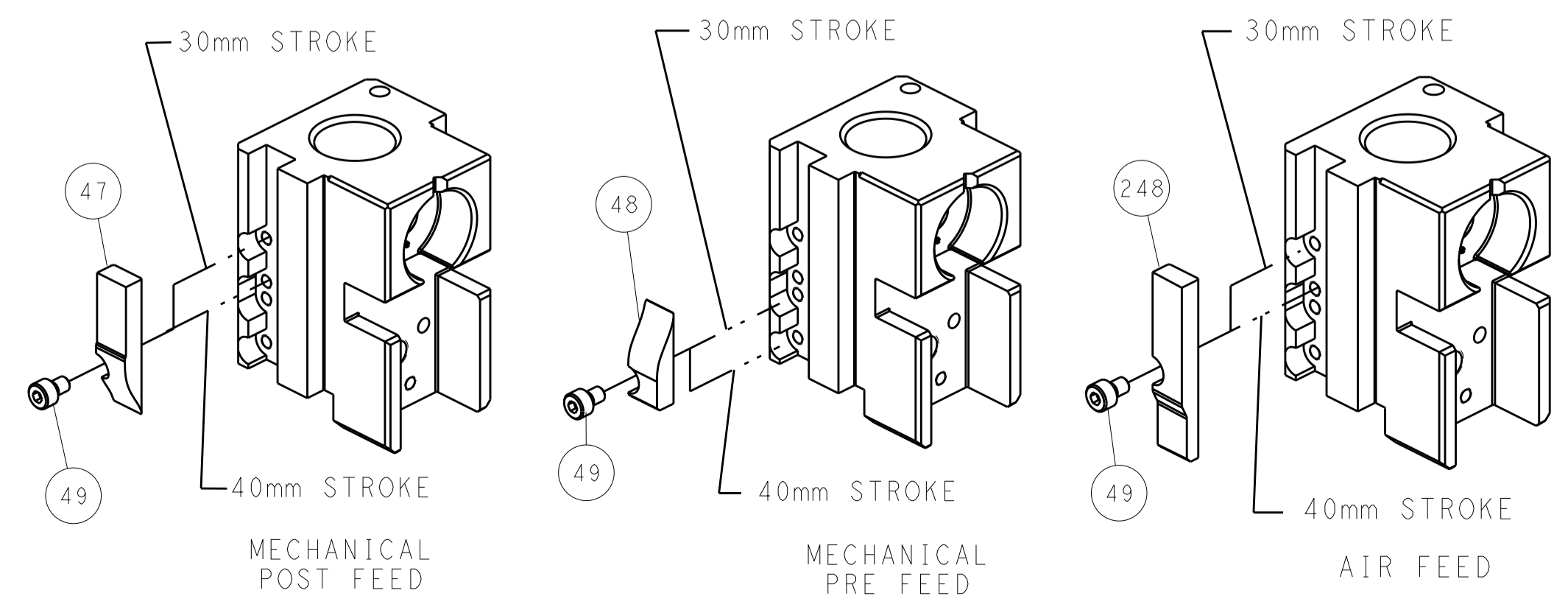


RAM SET-UP



FEED TRACK POSITION GUIDE BY INSULATION BARREL

CAM POSITIONS

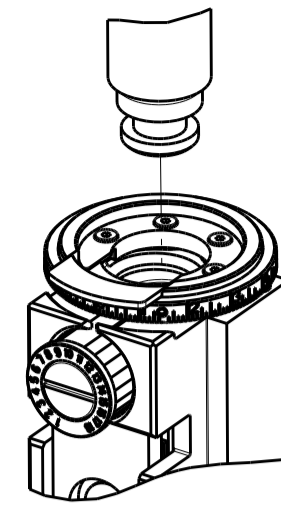


ATLANTIC VERSION
 Shown on sheets 1 of 4 & 2 of 4
 (Pacific version shown on sheets 3 of 4 & 4 of 4)

| | | | | | | | |
|-------------|---------|--|---------|-------------------------|---------|---|--|
| DIMENSIONS: | | TOLERANCES UNLESS OTHERWISE SPECIFIED: | | DWN: J. HOU 24MAR2015 | | TE Connectivity | |
| mm | 0 PLC ± | 1 PLC ± | 2 PLC ± | 3 PLC ± | 4 PLC ± | Harrisburg, PA 17105-3608 | |
| MATERIAL: | | FINISH: | | CHK: L. ZHANG 24MAR2015 | | NAME: Ocean Side Feed Applicator | |
| | | | | APVD: H. GUO 24MAR2015 | | SIZE: CAGE CODE: DRAWING NO: A1 00779 ©=2266731 | |
| | | | | PRODUCT SPEC: | | RESTRICTED TO: | |
| | | | | APPLICATION SPEC: | | Customer Accessible Production Drawing | |
| | | | | WEIGHT: | | SCALE: 1:2 SHEET 2 OF 4 REV C | |

| THIS DRAWING IS UNPUBLISHED. | RELEASED FOR PUBLICATION | | |
|---|--------------------------|--------------------------|------------|
| COPYRIGHT © BY TYCO ELECTRONICS CORPORATION. ALL RIGHTS RESERVED. | | | |
| PART NUMBER | REVISION | DESCRIPTION | FEED TYPE |
| 2-2266731-1 | C | FINE CRIMP HEIGHT ADJUST | MECHANICAL |
| 2-2266731-2 | C | FINE CRIMP HEIGHT ADJUST | PNEUMATIC |
| 7-2266731-7 | A | CRIMP TOOLING KIT | - |

PACIFIC VERSION TERMINATOR
INTERFACE ADAPTER



| APPLICATOR DATA | | |
|--------------------------------------|----------------|------|
| CRIMP | SIZE | TYPE |
| WIRE | 3.68 mm [.145] | F |
| INSUL | 3.68 mm [.145] | O |
| APPLICATOR INSTRUCTIONS 408-35042 | | |

| TERMINAL DATA: TE TERMINAL | | TE CRIMP SPECIFICATION | |
|--------------------------------------|-------------|---------------------------|-------------|
| TERMINAL NAME: 2.8mm BLADE, UNSEALED | | | |
| WIRE STRIP LENGTH | | INSULATION DIAMETER RANGE | |
| 4.63-5.39 mm [1.82-.212 IN] | | ϕ $\triangle 5$ | |
| TERMINAL APPLICATION SPECIFICATION | 114-13013 | - | - |
| TERMINALS APPLIED | | | |
| TE TERMINAL | TE TERMINAL | TE TERMINAL | TE TERMINAL |
| 1326029-8 | | | |

| WIRE SIZE | CRIMP HEIGHT mm [INCH] | CRIMP HEIGHT REFERENCE SETTING $\triangle 4$ |
|-----------|-------------------------------|--|
| 10 AWG | 2.10 +/- 0.05 [0.83 +/- .002] | 7.7 |
| 4.00mm2 | 1.90 +/- 0.05 [0.75 +/- .002] | 9.6 |
| 12 AWG | 1.75 +/- 0.05 [0.69 +/- .002] | 11.1 |



- $\triangle 1$ RECOMMENDED SPARE PARTS
 - $\triangle 2$ REFER TO SUPPLIED INSTRUCTION SHEET FOR CLEANING, LUBRICATION AND STORAGE OF APPLICATOR.
 - $\triangle 3$ APPLY PART NUMBER 2-23419-6 LOCTITE TO THREADS OF ITEM 242.
 - $\triangle 4$ CRIMP HEIGHT REFERENCE SETTING WAS THE SETTING USED WHEN THE APPLICATOR WAS QUALIFIED AT THE FACTORY. ADJUSTMENT MAY BE NECESSARY WHEN RUNNING APPLICATOR IN THE FIELD.
 - $\triangle 5$ INSULATION DIAMETER RANGE:
12 AWG 3.10-3.30 mm
4.00 mm2 3.34-3.50 mm
10 AWG 3.84-4.04 mm
6. UNLESS SPECIFIED OTHERWISE TORQUE VALUES SHALL BE USED PER DOCUMENT, 101-35000.

***WARNING**
ON INSTALLATION, SET WIRE DISC TO CRIMP HEIGHT REFERENCE SETTING FOR LARGEST WIRE SIZE. CRIMP HEIGHT REFERENCE SETTINGS GREATER THAN THE VALUE SHOWN MAY CAUSE DAMAGE TO THE CRIMP TOOLING, REFER TO THE INSTRUCTION SHEET FOR PROPER SETUP AND ADJUSTMENTS.

PACIFIC VERSION
Shown on sheets 3 of 4 & 4 of 4
(Atlantic version shown on sheets 1 of 4 & 2 of 4)

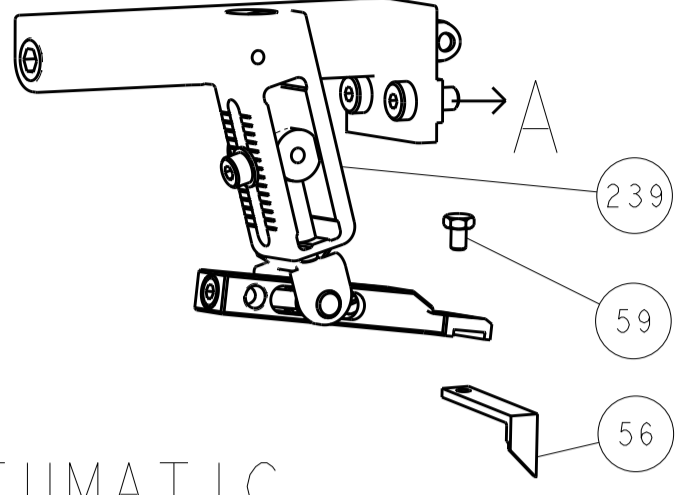
| LOC | DIST | REVISIONS | | | | | |
|-----|------|-----------|-----|-------------|------|-----|------|
| A | 66 | P | LTN | DESCRIPTION | DATE | OWN | APVD |
| | | - | - | SEE SHEET 1 | - | - | - |

| | | | | | |
|---|-----|-----|-------------|-------------------------------------|-----|
| - | 1 | 1 | 2119082-4 | CAM, SNAIL, INSULATION ADJUSTMENT | 244 |
| - | 1 | 1 | 2079764-1 | WASHER, WAVE SPRING, CREST-TO-CREST | 243 |
| - | 1 | 1 | 2119083-1 | RETAINER, INSULATION DIAL | 242 |
| - | 1 | 1 | 7-18023-7 | SCR, SKT HD CAP M3 X 4.0 | 241 |
| - | - | 1 | 2119580-1 | MECHANICAL FEED ASSEMBLY | 239 |
| - | 1 | - | 2844940-1 | AIR FEED MODULE | 238 |
| - | REF | REF | 994970-2 | COUNTER, MAGNETIC | 164 |
| - | 1 | - | 2119641-2 | FEED CAM, AIR FEED | 151 |
| - | 1 | 1 | 2168083-8 | SCR, SKT HD CAP, RoHS, M4 X 16 | 144 |
| - | 4 | 4 | 2168083-9 | SCR, SKT HD CAP, RoHS, M4 X 20 | 143 |
| - | - | 1 | 2119653-2 | FEED CAM, POST FEED | 142 |
| - | 1 | 1 | 1-1803583-0 | APPLICATOR BASIC ASSEMBLY, SF | 141 |
| - | 1 | 1 | 1803516-1 | RAM ASSEMBLY, SF PACIFIC | 140 |
| - | 1 | 1 | 1-22281-8 | SPRING, COMPRESSION | 121 |
| - | 1 | 1 | 2844908-1 | SCREW, LOCKING | 99 |
| - | 1 | 1 | 2844907-1 | POST, LOCKING | 98 |
| - | 1 | 1 | 1-690438-0 | FRONT STRIP GUIDE | 96 |
| - | 2 | 2 | 2168083-1 | SCR, SKT HD CAP, RoHS, M3 X 8.0 | 95 |
| - | 1 | 1 | 2168083-6 | SCR, SKT HD CAP, RoHS, M5 X 65 | 93 |
| - | 1 | 1 | 455888-5 | SPACER, CRIMPER | 82 |
| - | 1 | 1 | 22278-8 | SPRING, COMPRESSION | 77 |
| - | 1 | 1 | 854769-4 | HOLDER, INS | 74 |
| - | 1 | 1 | 1803607-3 | DOCUMENTATION PACKAGE | 71 |
| - | 1 | 1 | 2119740-1 | TAG, IDENTIFICATION | 67 |
| - | 2 | 2 | 2168078-1 | SCREW, DRIVE, RH, RoHS, 2 x .188 | 66 |
| - | 2 | 2 | 2-18032-5 | SCR, SET, FLT PNT, M5 X 20.0 | 61 |
| - | 1 | 1 | 5-18022-5 | SCR, HEX HD CAP, M4 X 6.0 | 59 |
| - | 1 | 1 | 21028-2 | PIN, SLOTTED SPRING .062 X .250 | 58 |
| - | 1 | 1 | 1338683-8 | FEED PAWL | 56 |
| - | 2 | 2 | 1-2168083-0 | SCR, SKT HD CAP, RoHS, M4 X 10 | 53 |
| - | 1 | 1 | 5018030-1 | NUT, HEX, REG, RoHS, M3 | 52 |
| - | 1 | 1 | 811242-5 | BUMPER, HOLD DOWN | 51 |
| - | 1 | 1 | 690753-2 | SPACER, TONKER | 50 |
| - | 1 | 2 | 18023-9 | SCR, SKT HD CAP M4 X 6.0 | 49 |
| - | - | 1 | 2119652-1 | FEED CAM, PRE FEED | 48 |
| - | 1 | 1 | 1803602-1 | SCR, BHSC, RoHS (M8 X 25) | 41 |
| - | 1 | 1 | 1752356-2 | SUPPORT, TERMINAL | 34 |
| - | 2 | 2 | 2079383-5 | SCR, BHSC, RoHS (M4 X 20) | 33 |
| - | 2 | 2 | 3-2844962-2 | SPACER, CYLINDRICAL, STRIP GUIDE | 30 |
| - | 1 | 1 | 2844938-5 | PLATE, STRIP GUIDE | 29 |
| - | 1 | 1 | 455888-3 | SPACER, CRIMPER | 28 |
| - | 2 | 2 | 22283-1 | SPRING, COMPRESSION | 27 |
| - | 1 | 1 | 356835-1 | LEVER, DRAG RELEASE | 26 |
| - | 1 | 1 | 240792-1 | DRAG, TERMINAL | 25 |
| - | 1 | 1 | 1320928-6 | STRIP GUIDE | 24 |
| - | 1 | 1 | 980371-4 | SCR, SKT HD SHLDR 5.0 DIA X 6.0 | 23 |
| - | 1 | 1 | 2168083-2 | SCR, SKT HD CAP, RoHS, M4 X 8.0 | 21 |
| - | 2 | 2 | 1-18028-2 | WASHER, FLAT, REG M4 | 20 |
| - | 1 | 1 | 2119533-1 | STRIPPER, SIDE FEED | 19 |
| - | 1 | 1 | 2119806-1 | INSERT, SHEAR | 13 |
| - | 1 | 1 | 3-22280-3 | SPRING, COMPRESSION | 12 |
| - | 1 | 1 | 1-356885-4 | STOP, SHEAR | 11 |
| - | 1 | 1 | 2119805-1 | SHEAR HOLDER, FRONT | 10 |
| - | 1 | 1 | 318707-1 | FLOATING SHEAR, FRONT | 9 |
| - | 1 | 1 | 1-1633928-2 | ANVIL, COMBINATION | 8 |
| - | - | - | - | - | 7 |
| - | - | - | - | - | 6 |
| - | 1 | 1 | 2119780-8 | DEPRESSOR, SHEAR | 5 |
| - | 1 | 1 | 3-238011-5 | BLOCK, CRIMPER SPACER | 4 |
| - | 1 | 1 | 4-1633966-6 | CRIMPER, INSULATION O | 3 |
| - | 1 | 1 | 455888-7 | SPACER, CRIMPER | 2 |
| - | 1 | 1 | 2-1633609-4 | CRIMPER, WIRE | 1 |

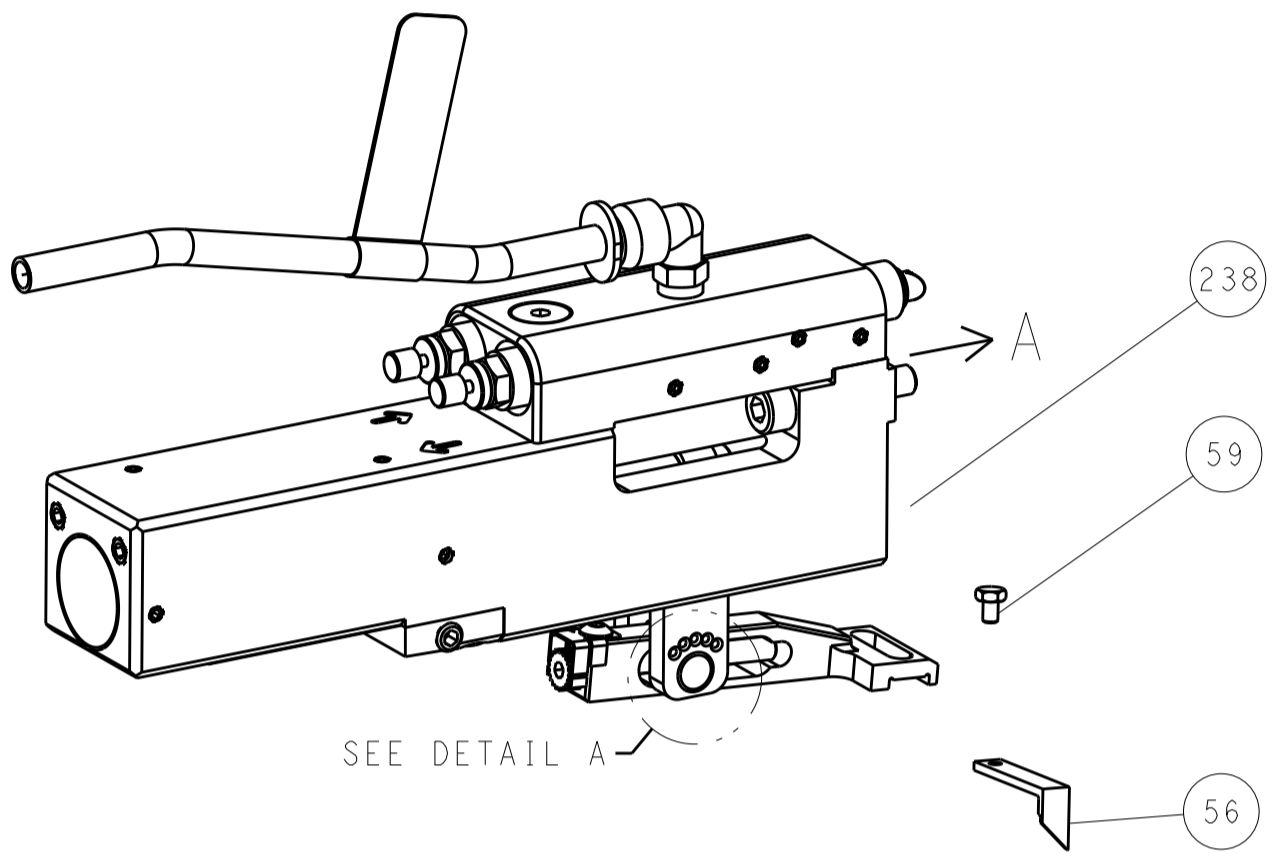
| | | | | | | | |
|-------------|--|--|--|-------------------------|--|--|--|
| DIMENSIONS: | | TOLERANCES UNLESS OTHERWISE SPECIFIED: | | DWG: J. HOU 24MAR2015 | | TE Connectivity | |
| mm | | 0 PLC ± | | CHK: L. ZHANG 24MAR2015 | | Harrisburg, PA 17105-3608 | |
| | | 1 PLC ± | | APVD: H. GUO 24MAR2015 | | NAME: Ocean Side Feed Applicator | |
| | | 2 PLC ± | | PRODUCT SPEC | | SIZE: CAGE CODE: DRAWING NO: RESTRICTED TO | |
| | | 3 PLC ± | | APPLICATION SPEC | | A1 00779 C=2266731 | |
| | | 4 PLC ± | | WEIGHT | | SCALE: 1:2 SHEET 3 OF 4 REV C | |
| | | ANGLES | | MATERIAL | | Customer Accessible Production Drawing | |
| | | FINISH | | | | | |

| LOC | | DIST | | REVISIONS | | | |
|-----|-----|-------------|------|-----------|------|--|--|
| P | LTN | DESCRIPTION | DATE | DMN | APVD | | |
| A | 66 | SEE SHEET 1 | | | | | |

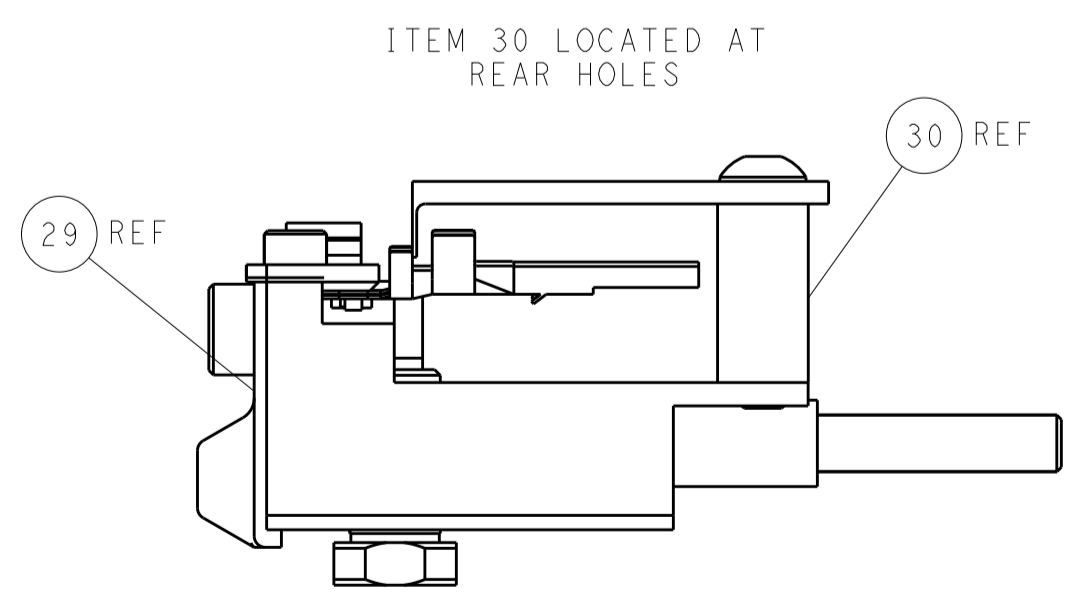
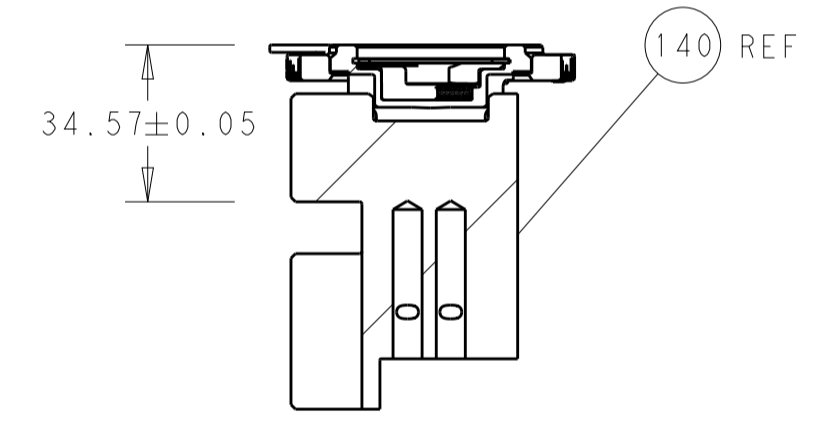
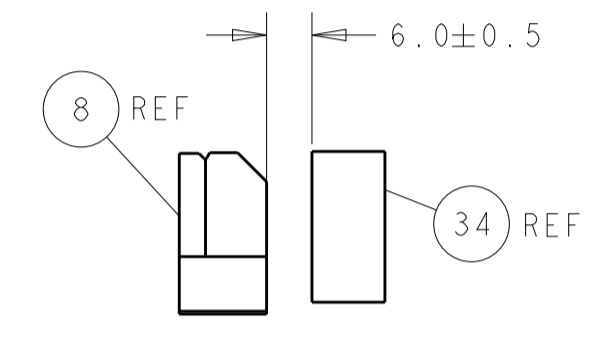
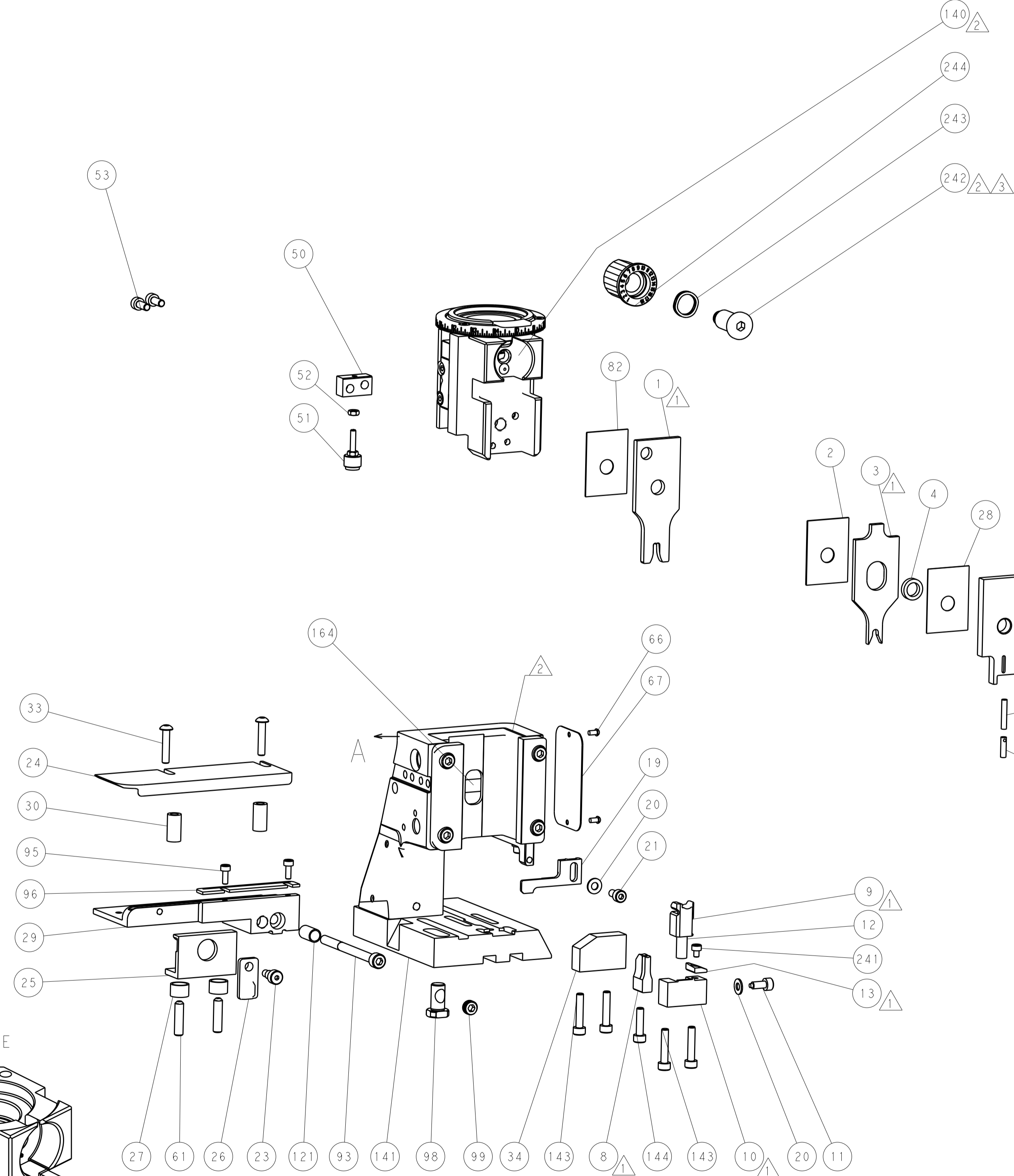
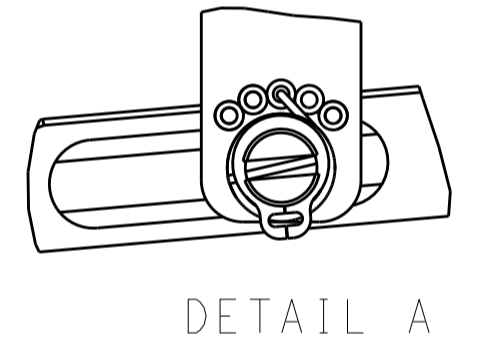
FEED TYPE MECHANICAL



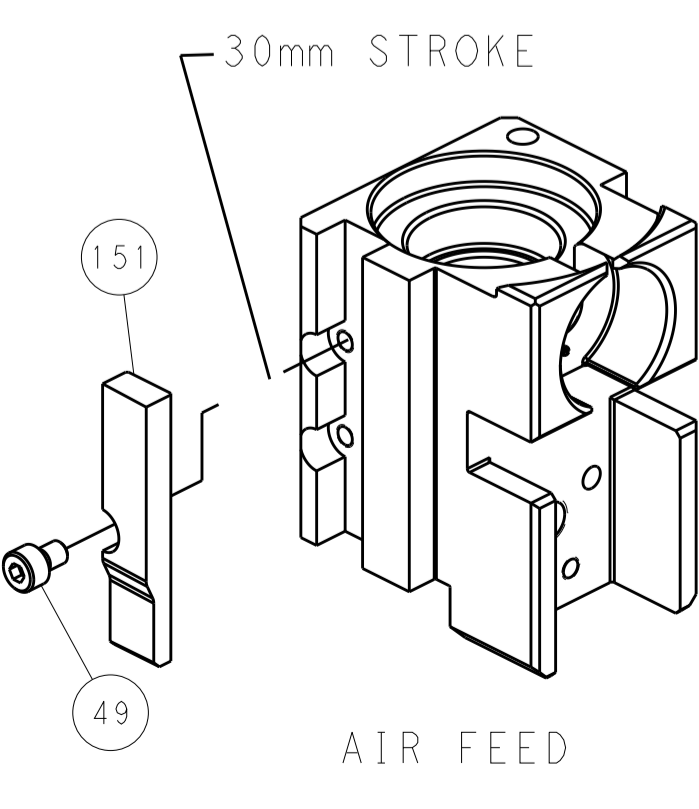
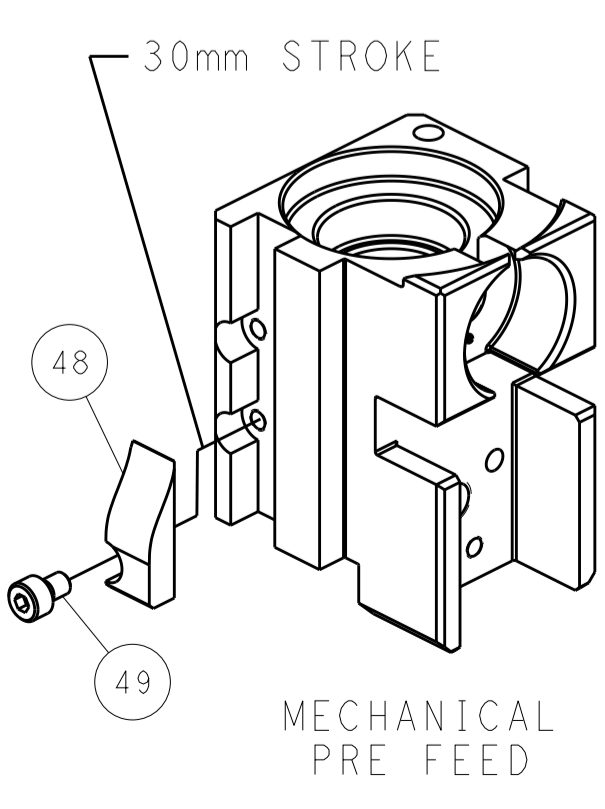
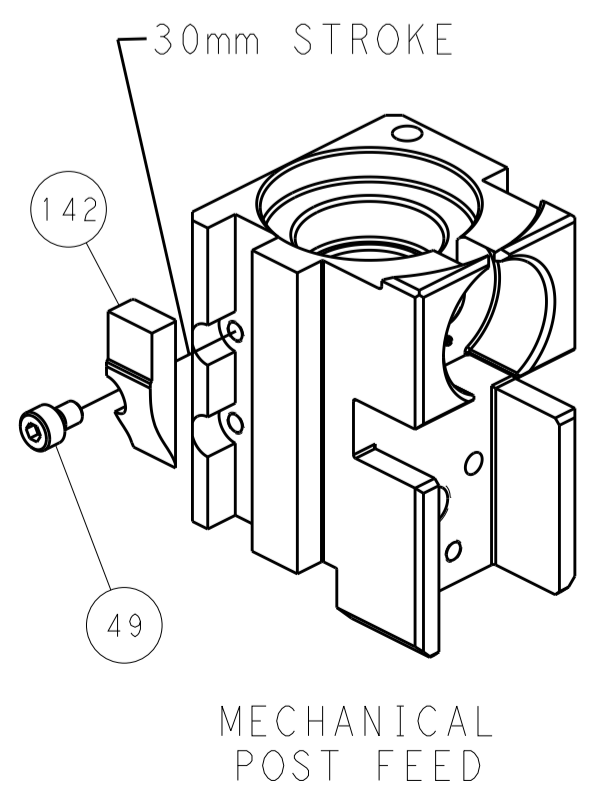
PNEUMATIC



FEED SPRING SETTING POSITION (SHOWN FROM REAR SIDE)



CAM POSITIONS



PACIFIC VERSION
 Shown on sheets 3 of 4 & 4 of 4
 (Atlantic version shown on sheets 1 of 4 & 2 of 4)

| | | | | | | | |
|-------------|---------|--|---------|-------------------------|---------|---|---------------------------|
| DIMENSIONS: | | TOLERANCES UNLESS OTHERWISE SPECIFIED: | | DWG: J. HOU 24MAR2015 | | TE Connectivity | |
| mm | 0 PLC ± | 1 PLC ± | 2 PLC ± | 3 PLC ± | 4 PLC ± | 5 PLC ± | Harrisburg, PA 17105-3608 |
| MATERIAL: | | FINISH: | | CHK: L. ZHANG 24MAR2015 | | NAME: Ocean Side Feed Applier | |
| | | | | APVD: H. GUO 24MAR2015 | | SIZE: CAGE CODE: DRAWING NO: RESTRICTED TO | |
| | | | | PRODUCT SPEC: | | A1 00779 C=2266731 | |
| | | | | APPLICATION SPEC: | | Customer Accessible Production Drawing | |
| | | | | WEIGHT: | | SCALE: 1:2 SHEET 4 OF 4 REV C | |
| | | | | ANGLES: | | SHEETS 1 & 2 ARE NOT REQUIRED FOR PACIFIC VERSION | |