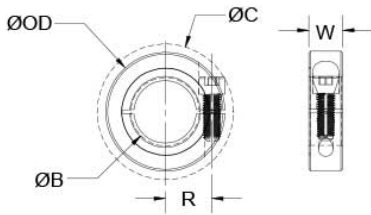




AMTCL-12-3-F

Ruland AMTCL-12-3-F, M12 x 3 Acme Threaded Shaft Collar, Black Oxide Steel, One-Piece Clamp Style, 28mm OD, 11mm Width



Description

Ruland AMTCL-12-3-F is a trapezoidal threaded one-piece shaft collar with a M12 x 3 bore, 28mm OD, and 11mm width. AMTCL-12-3-F has higher axial holding power than round bore shaft collars of similar size. Ruland double taps threads to ensure a precise and burr-free finish allowing for easy installation and removal, proper fit, and extended shaft life. The clamp style design will not mar the shaft. AMTCL-12-3-F is commonly used for guiding, spacing, stopping, mounting, and component alignment. Equipment manufacturers benefit from the tightly controlled face to bore perpendicularity (TIR of ? .05mm). Perpendicularity is critical for alignment when the shaft collar is used as a load bearing face, mechanical stop, or for mounting components such as gears or bearings. Proprietary processes have been developed by Ruland to maintain superior fit, finish, and holding power. AMTCL-12-3-F is stamped with the Ruland name and bore size for ease of identification. Forged screws test beyond DIN 912 12.9 standards to ensure maximum holding power. It is manufactured from solid bar stock sourced from select North American mills and machined to a fine burr free finish. Ruland uses 1215 lead-free steel with a proprietary black oxide finish that produces a fine glossy finish while increasing holding power and resisting corrosion. AMTCL-12-3-F is RoHS3 and REACH compliant and manufactured in our Marlborough, MA factory under strict controls using proprietary processes.

Product Specifications

Threaded Bore (B)	M12 x 3	Thread Class	7e
Outer Diameter (OD)	28 mm	Width (W)	11 mm
Clearance Diameter (C) MAX	32.0 mm	Width Tolerance	+0.076 mm / -0.254 mm
Recommended Shaft Tolerance	+0.000 mm / -0.013 mm	Forged Clamp Screw	M4 x 12
Screw Material	Alloy Steel	Hex Wrench Size	3.0 mm
Screw Finish	Black Oxide	Seating Torque	4.6 Nm
Screw Location (R)	10.00 mm	Number of Screws	1 ea
Material Specification	1215 Carbon Steel Bar	Temperature	-40°F to 350°F (-40°C to 176°C)
Finish Specification	Hot Process Black Oxide, Impregnated with Naphthenic Oil, Centrifugally Dried	Manufacturer	Ruland Manufacturing
Country of Origin	USA	Weight (lbs)	0.092000
UPC	634529219300	Tariff Code	8483.60.8000
UNSPC	31162811		
Note 1	Performance ratings are for guidance only. The user must determine suitability for a particular application.		
Prop 65	<p>⚠WARNING This product can expose you to the chemical Ethylene Thiourea, known to the State of California to cause cancer and birth defects or other reproductive harm. For more information go to www.P65Warnings.ca.gov.</p>		

Installation Instructions

1. Use the AMTCL-12-3-F acme threaded shaft collar as it is received.
2. Wipe the bore clean.
3. Apply a thin coat of light oil to the shaft.
4. Place the collar onto the desired shaft location and tighten it using a 3.0 mm hex wrench until a slight resistance is felt.
5. Wring collar into its final position and tighten the screw to the full recommended seating torque of 4.6 Nm using a 3.0 mm torque wrench.