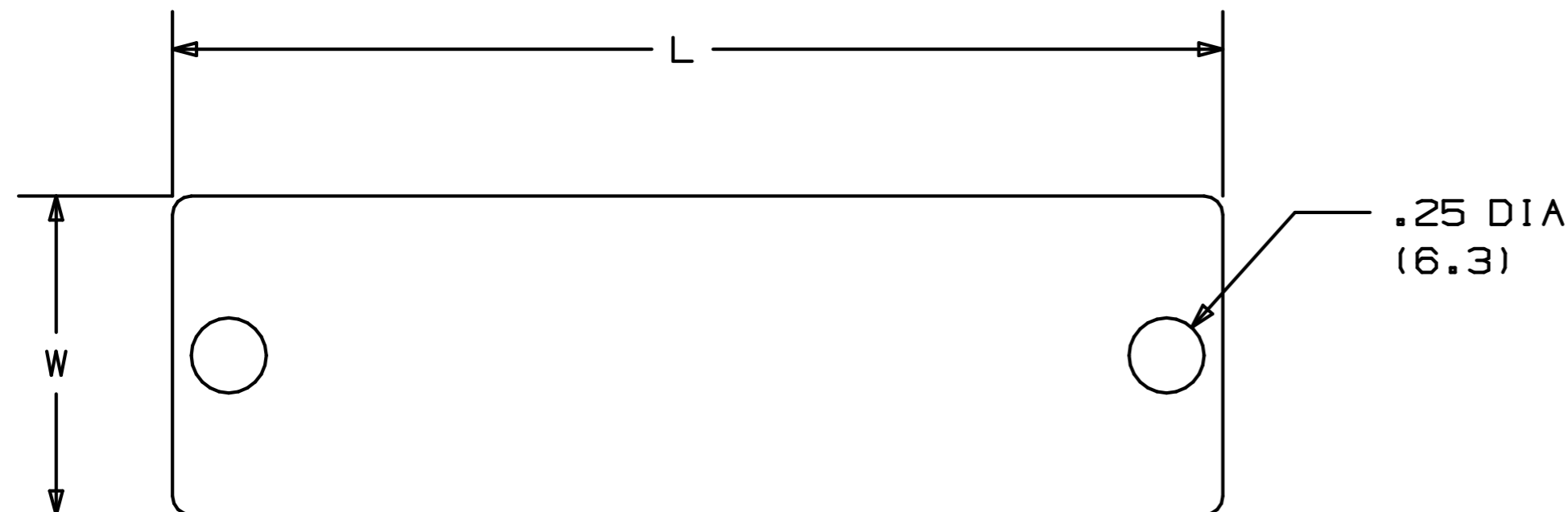


THIS COPY IS PROVIDED ON A RESTRICTED BASIS AND IS NOT TO BE USED IN ANY WAY DETRIMENTAL TO THE INTERESTS OF PANDUIT CORP.


(B) PANDUIT PART NO.	PACKAGE QTY.	COLOR	LENGTH "L" ±.02 (.5)	WIDTH "W" ±.02 (.5)
AP350W06-Q2	25	RED	3.50 (88.9)	1.06 (26.9)
AP350W06-Q5	25	GREEN	3.50 (88.9)	1.06 (26.9)
(A) AP350W06-Q0	25	BLACK	3.50 (88.9)	1.06 (26.9)
AP350W06-Q49	25	GOLD	3.50 (88.9)	1.06 (26.9)
AP350W06-Q6	25	DK BLUE	3.50 (88.9)	1.06 (26.9)



NOTES:

1. DIMENSIONS IN () ARE IN mm.
2. PACKAGING QUANTITY -Q = 25 PCS.
3. CUSTOM PERMANENT MARKING AVAILABLE, CONSULT FACTORY.
4. GALVANIC REACTION MAY OCCUR BETWEEN STAINLESS STEEL TIES AND ALUMINUM MARKER PLATES IN CERTAIN ENVIRONMENTS CAUSING THE ALUMINUM TO CORRODE.
5. UNLESS OTHERWISE SPECIFIED TOLERANCES:
 .XXX = ±.010 [.25]
 .XX = ±.02 [.5]

S41110_02

REV	DATE	BY	CHK	DESCRIPTION	ECN #	PM	CUST	DRAWN BY	CHK'D	SCALE	DRAWING NO.
02	1/06	JAMB	SKB	(B) REMOVED-PART NO'S. AP350W06-Q1, AP350W06-Q3 & AP350W06-Q7 - PARTS ARE OBSOLETE	SS00136	---	---	EJS	SKB	N/A	S41110
01	1/06	JAMB	SKB	(A) ADDED ALL PART NO'S. FOR BLACK, BROWN, ORANGE, GOLD, DK BLUE & PURPLE TAGS.	SS00130	---	---				
00	10/00	EJS	SKB	DWG. RELEASED	08768	CCH	JAC				
								 CORP.		TINLEY PARK, ILLINOIS	
								RECTANGULAR 2-HOLE ALUMINUM MARKER PLATES CUSTOMER DRAWING			