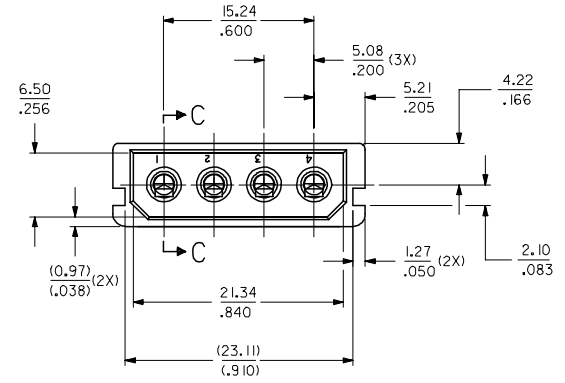
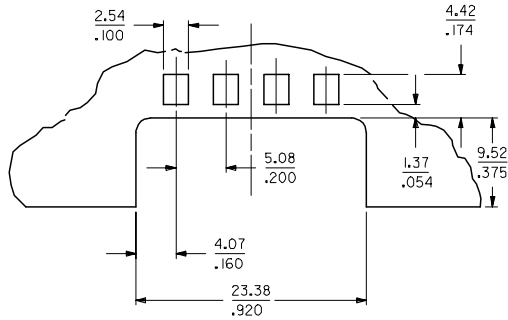
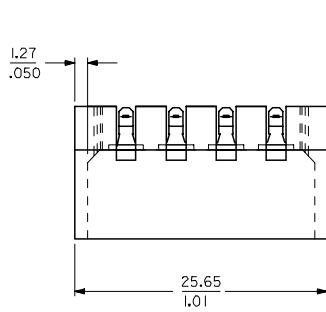


SECTION C - C



RECOMMENDED P.C. BOARD LAYOUT



NOTES:

- MOLDED RIBS TO PROVIDE AN INTERFERENCE FIT TO A 1.62± 0.10/(.064±.004) P.C. BOARD
- PLATING
POSTPLATE 0.00254/(.000100) MIN. TIN OVER 0.00127/(.000050) MIN. NICKEL OVERALL.
- PART INTENDED TO MATE WITH HOUSING 8981-4P2 AND TERMINAL 8980-3*.
- PRODUCT SPEC. PS-8981-4SM* APPLIES.
- MATERIAL:
HOUSING - PET, GLASS FILLED, UL94V-0, COLOR: BLACK
TERMINAL - PHOSPHOR BRONZE

OBS TIN/LEAD P/N EC NO: S2006-0763 DRWN:MLONG 2006/03/31 CHKD:NAGESHKN 2006/03/31 APPR:PTLIM 2006/04/03	QUALITY SYMBOLS ▽=0 △=0	GENERAL TOLERANCES (UNLESS SPECIFIED)		DIMENSION STYLE MM/IN	SCALE NTS	DESIGN UNITS METRIC	THIRD ANGLE PROJECTION			
		4 PLACES ± --- ± ---	3 PLACES ± --- ± .008	2 PLACES ± 0.20 ± ---	1 PLACE ± --- ± ---	ANGULAR ± 3 °	DRAWN BY CK	DATE 1989/09/30	TITLE POWER CONNECTOR, 4 CKTS SMT	
		DRAFT WHERE APPLICABLE MUST REMAIN WITHIN DIMENSIONS				APPROVED BY TAY	DATE 1989/09/30	MATERIAL NO. SEE TABLE	DOCUMENT NO. SDA-8981-4SM1	SHEET NO. 1 OF 1
						APPROVED BY NK	DATE 1989/09/30	MOLEX INCORPORATED		