

Xadow - Motor Driver

SKU 108040000

DISCONTINUED

This item is no longer available.

This product contains battery, might apply to shipping restriction.

Description

Xadow Motor can be used to control DC Motors. Its heart is a low-saturation two-channel bidirectional motor drive chip LB1836M, controlled by ATmega168 which handles the I2C communication with Xadow Main Board. Xadow Motor features a changeable I2C address. And it needs a separate low power to drive motors.

Xadow is a though small but perfectly formed Arduino(TM) compatible board series containing several modules. It's a kit extremely suitable for space-sensitive projects such as wearable devices & arts designs, which have higher request on size, weight and flexible cascade connection. You can find more modules [here](#).

Note: This module is not compatible with any other Xadow version 2 or RePhone modules.

SPECIFICATION

-
- Motor Driver: LB1836M
-
- Battery Voltage: 2.5V ~ 9V
-
- Output Current per channel(Max): 300mA
-
- Communication Mode: I2C
-
- I2C Address is changeable

DOCUMENTS

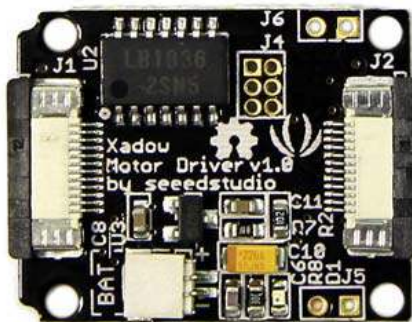
Please visit our **wiki** page for more info about this product. It will be appreciated if you can help us improve the documents, add more demo code or tutorials. For technical support, please post your questions to our **forum**.

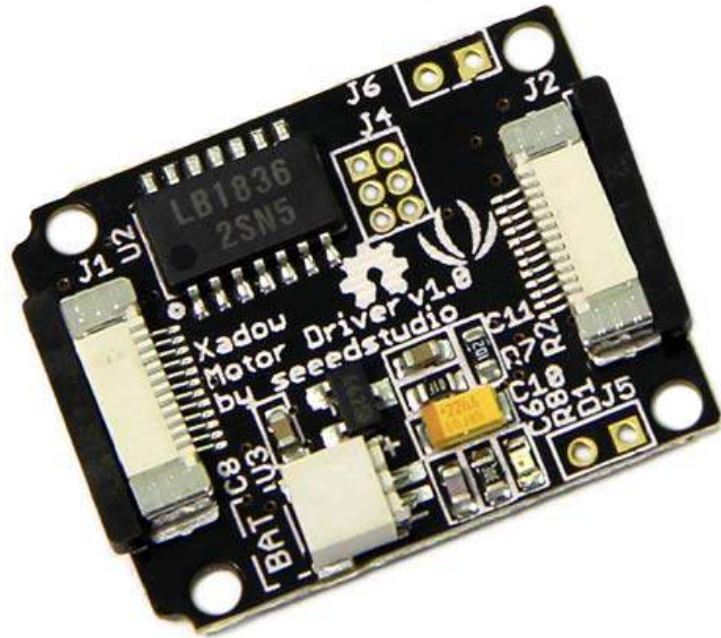
Technical Details

Dimensions	210mm x 60mm x 9mm
Weight	G.W 14g
Battery	Lithium Cells / Batteries contained in equipment UN3481 - PI967

ECCN/HTS

ECCN	Not Available
HSCODE	8503001000





<https://www.seeedstudio.com/Xadow-Motor-Driver-p-1626.html> 9-17-18