

## Quality Control Standard

### 出货品质标准

|                           |  |                             |                          |
|---------------------------|--|-----------------------------|--------------------------|
| Valued customer<br>客户名称 : | Customer Product Name/No.<br>(客户产品名称/编号):          | <b>滚刷</b>                   |                          |
| Model No<br>机种编号 :        | Swatch No.:<br>样品编号                                | Date作成日:<br>Rev. Date修订日:   | <b>2023/1/11</b><br>Rev. |
| Our Code No.<br>仕样编号 :    | (Please Use Our Code No. To Order)<br>(订货时请用此仕样编号) | 备注 <b>DV</b><br><b>ROHS</b> |                          |
|                           | <b>RP390-ST-24100</b>                              | <b>EHA231-0021</b>          |                          |
|                           | <b>RP390-ST-00034V</b>                             |                             |                          |
|                           | <b>陈礼云2023/1/12</b>                                |                             |                          |

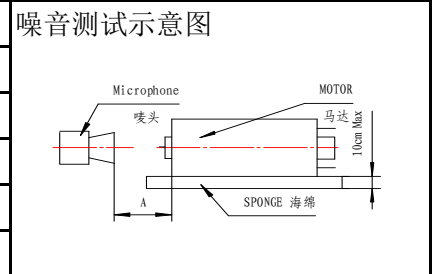
### 1. Conditions of Standard Operation / 工作条件

|                                     |   |  |
|-------------------------------------|---|--|
| 1- 1 )Driving Voltage<br>驱动电压       | : <b>12</b> V   | DC Constant between motor terminals.<br>马达端子电压 <b>12</b> V 直流恒压。 |
| 1- 2 )Direction of Rotation<br>回转方向 | : <b>CCW</b>  | viewing from metal housing.<br><b>CCW</b> 面对马达金属外壳时。             |
| 1- 3 )Position of Motor<br>马达放置状态   | : To be placed horizontally when measuring.<br>测试时水平放置。 |  |

|                                 |                                 |  |
|---------------------------------|---------------------------------|--|
| 1- 4 )Operating Temperature工作温度 | : <b>-10</b> °C to <b>60</b> °C |  |
| 1- 5 )Operating Humidity工作湿度    | : 30%RH to 95%RH                |  |

### 2. Conditions of Standard Test / 测试条件

|                               |                  |  |
|-------------------------------|------------------|--|
| 2- 1 )Testing Temperature测试温度 | : 10°C to 30°C   |  |
| 2- 2 )Testing Humidity测试湿度    | : 30%RH to 95%RH |  |



### 3. Initial Electrical Characteristics / 初期特性

|  |   |  |
|--|---|--|
| 3- 1 ) No Load Speed<br>无负荷转速  | : <b>9400</b> ± <b>1400</b>   | rpm<br>转/分   |
| 3- 2 ) No Load Current<br>无负荷电流  | : <b>180</b> mA max.<br>: 最大 <b>180</b> 毫安培                                 |  |
| 3- 3 ) Stall Torque<br>堵转扭力  | At Load <b>7.0 &amp; 18.0</b> mNm : 最小 <b>430</b> g.cm                      | g.cm min.<br>g.cm  |
| 3- 4 ) Stall Current<br>堵转电流   | 在负载点 <b>7.0 &amp; 18.0</b> mNm : 最大 <b>6.3</b> A max.<br>: 最大 <b>6.3</b> 安培 |  |
| 3- 5 ) Mechanical Noise(vertical from housing side)<br>30 cm Background noise 30dB Max)<br>机械噪音(距离铁壳侧 30 cm, 环境噪音30dB Max) | : <b>70</b>   | dB Or below(RMS)JIS-A Characteristics<br>dB 以下(RMS)JIS-A特性 |
| 3- 6 ) Reference Performance Curve<br>参考性能曲线   | : As per attached Sheet<br>: 所附图表为  | <u>RP390-ST-24100</u><br><u>RP390-ST-24100</u>             |
| 3- 7 ) Dimensions<br>外形尺寸  | : As per Drawing attached<br>: 所附图面为  | <u>WG- R390T-Y43</u><br><u>WG- R390T-Y43</u>               |
| 3- 8 ) End play of Shaft<br>虚位   | : <b>0.05</b> ~ <b>0.40</b> mm<br>: <b>0.05</b> ~ <b>0.40</b> 毫米            |  |

For &amp; on behalf of Customer

For &amp; on behalf of Standard Motor Co., Ltd.

Jack Lee 2023/01/11



As a reminder, the specification should be signed and returned within two weeks, or it will be considered as acceptable by the customer. 如果客户两周内不签字确认并返回, 将被视为已认可此规格。

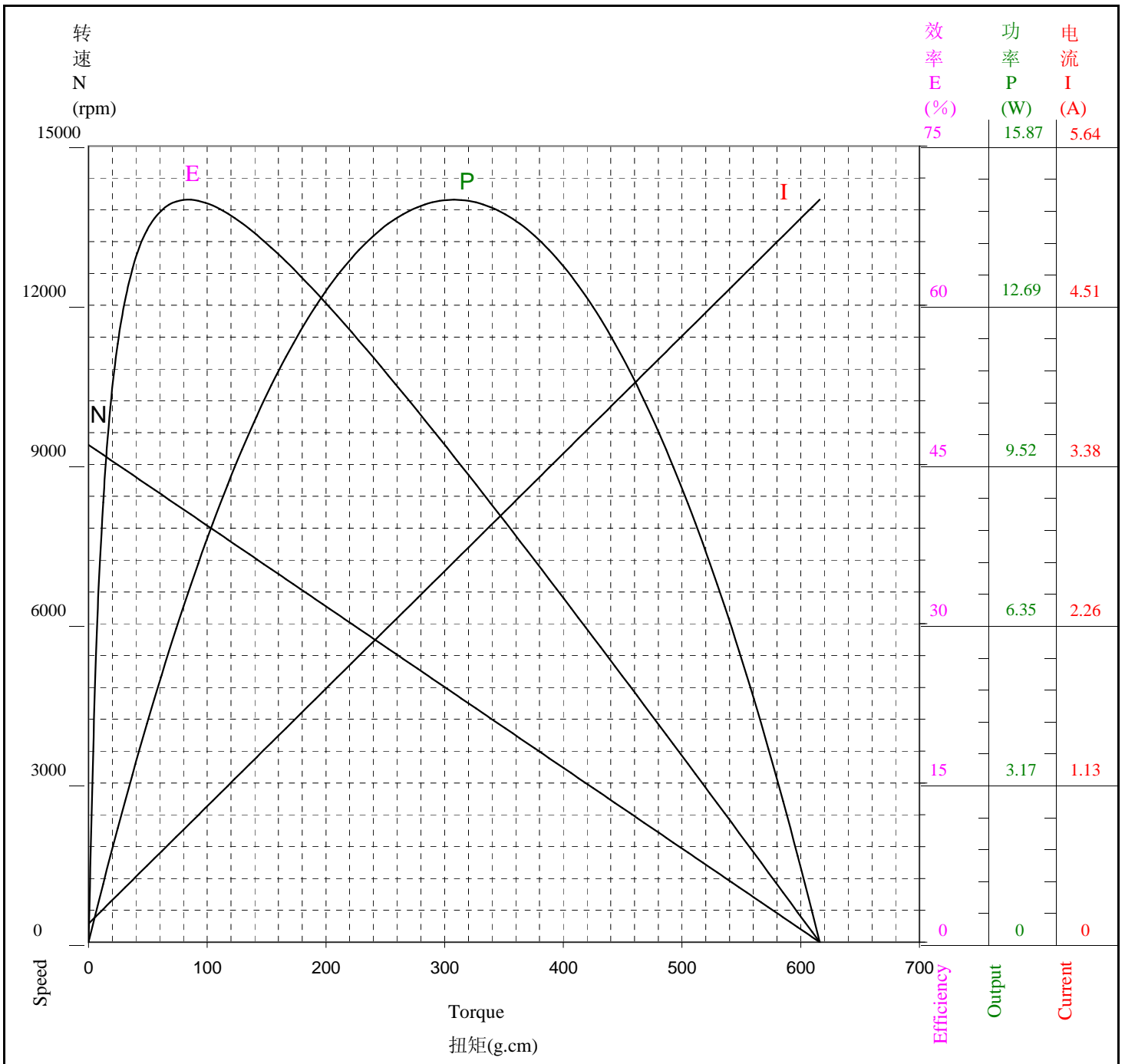
性能表只供参考  
马达实际参数请以马达出货标准为主



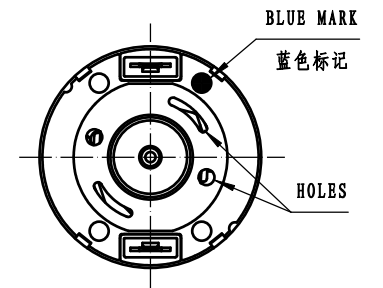
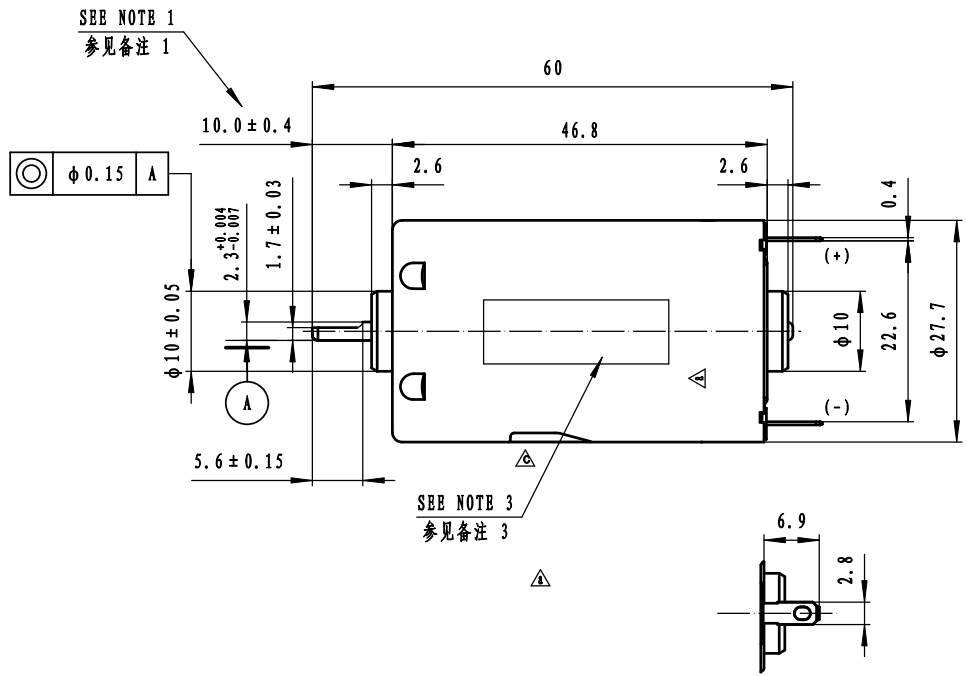
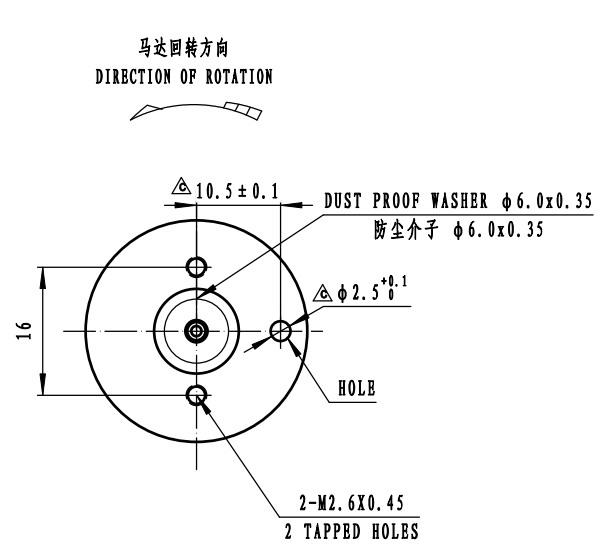
**STANDARD MOTOR 標準微型摩打有限公司**

两点法: 66.3 g.cm & 254.9 g.cm

| Model/Winding<br>型号/卷线 | Voltage<br>电压<br>V | No Load<br>无负荷     |                    | At Maximum Efficiency<br>最大效率点 |                    |                      |                       | At Maximum Output<br>最大功率点 |                    |                      |                   | Stall<br>停止        |                      |
|------------------------|--------------------|--------------------|--------------------|--------------------------------|--------------------|----------------------|-----------------------|----------------------------|--------------------|----------------------|-------------------|--------------------|----------------------|
|                        |                    | Current<br>电流<br>A | Speed<br>转速<br>rpm | Current<br>电流<br>A             | Speed<br>转速<br>rpm | Torque<br>扭矩<br>g.cm | Efficiency<br>效率<br>% | Current<br>电流<br>A         | Speed<br>转速<br>rpm | Torque<br>扭矩<br>g.cm | Output<br>功率<br>W | Current<br>电流<br>A | Torque<br>扭矩<br>g.cm |
|                        |                    |                    |                    |                                |                    |                      |                       |                            |                    |                      |                   |                    |                      |
| RP390-ST-24100         | 12.0               | 0.131              | 9370               | 0.830                          | 8094               | 83.9                 | 70.0                  | 2.696                      | 4685               | 308.0                | 14.80             | 5.262              | 615.9                |



| 日期         | 标记  | 位置     | 记事             | 担当  | 确认  |
|------------|-----|--------|----------------|-----|-----|
| 2012.11.27 | △x2 | C5, D5 | 图误修整           | 郭增成 | 王瑞修 |
| 2013.03.13 | △x1 | B6     | 客户要求:取消防尘垫薄片   | 郭增成 | 王瑞修 |
| 2015.01.14 | △x3 | B1C2C5 | 图面修正、标注定位孔相关尺寸 | 石珠彪 | 王传森 |



NOTES (备注):

1. THIS DIM APPLIES ONLY WHEN MOTOR SHAFT IS IN EXTREME LEFT POSITION  
该尺寸适用于将轴压于左侧时
2. SHAFT END PLAY 0.05 ~ 0.40  
马达虚位(轴向串动) 0.05 ~ 0.40
- △3. SPECIFIED CONTENT WILL BE TYPEGRAPHICALD IN CONFORMITY TO GETUP BOOK OF MOTOR  
按马达仕様书印刷指定内容

| Characteristic | DWN. BY                  | Zhou Jinsuang | DWN. DATE | 12.05.12 | TITLE                 | OUTLUNE DRAWING |
|----------------|--------------------------|---------------|-----------|----------|-----------------------|-----------------|
|                | CHK. BY                  |               | CHK. DATE |          | DWG. No.              | WG-R390T-Y43    |
| ☐ CpK > 1.00   | APP. BY                  |               | APP. DATE |          | Undeclared tolerances | ± 0.3           |
| ☑ CpK > 1.33   | SYV 苏州工业园区 苏州工业园区 苏州工业园区 |               | SCALE     | 1.5:1    | Rev.                  | c A3            |